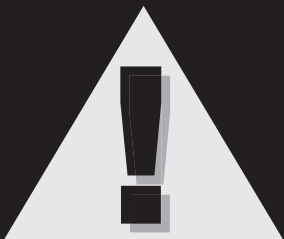


PROD. NO.: 030645

MOD. NO.: 728D



22 Ton Air/Hydraulic Truck Axle Jack Owner's Manual



WARNING:

IMPORTANT: READ THESE INSTRUCTIONS AND ALL WARNINGS PRIOR TO USING THIS EQUIPMENT. UNDERSTAND ALL OPERATING PROCEDURES, SAFETY WARNINGS AND MAINTENANCE REQUIREMENTS. FAILURE TO DO SO COULD CAUSE AN ACCIDENT RESULTING IN SERIOUS OR FATAL INJURY AND/OR PERSONAL PROPERTY DAMAGE.

A



Brand

surewerx.com

SA030645_Manual



WARNING!

The use of portable automotive lifting devices is subject to certain hazards that cannot be prevented by mechanical means, but only by exercise of intelligence, care, and common sense. It is therefore essential to have personnel involved in the use and operation of equipment who are careful, competent, trained, and qualified in the safe operation of this equipment and its proper use when servicing motor vehicles and their components. Examples of hazards are dropping, tipping, or slipping of motor vehicles or their components caused primarily by improperly securing loads, overloading, off-centered loads, use on other than hard level surfaces, and using equipment for a purpose for which it was not designed.

The owner and / or operator shall study and understand the product and safety instructions before operating this equipment. Safety information shall be emphasized and understood. If the operator is not fluent in English, the product and safety instructions shall be read to and discussed with the operator in the operator's native language by the purchaser / owner or his designee, making sure that the operator comprehends their contents. A copy of these instructions / warnings shall be retained for future reference.



INSPECTION

Visual inspection shall be made before each use of this equipment, checking for abnormal conditions, such as cracked welds, leaks, damaged, loose or missing parts. This equipment shall be removed immediately from service if it is believed to have been subjected to an abnormal or shock load, the equipment shall be inspected by a qualified repair facility. Owners and / or operators should be aware that repair of this equipment may require specialized knowledge and facilities. It is recommended that this equipment be inspected annually by a qualified repair facility. Defective parts, decals, safety labels or signs should be replaced with Strongarm specified parts.



WARNING!

- Prior to lifting a vehicle, refer to vehicle manufacturer's recommended lifting points.
- Inspect the jack prior to each use, remove from service if it is leaking, damaged, excessively worn, or has been altered in any way.
- This jack was designed for lifting purposes only. Do not attempt to work on the vehicle until appropriately rated jacks stands are supporting the load.
- Do not exceed rated capacity.
- Do not move or dolly the vehicle while on jack.
- Chock vehicle to prevent movement.
- Center load on saddle, off center loads may cause jack failure and / or loss of load.
- Use jack on a hard level surface.
- Only attachments and / or adapters supplied by the manufacturer shall be used.
- No alterations shall be made to this product.
- Failure to heed these markings may result in severe or fatal personal injury and / or property damage.



SET UP

ASSEMBLY

1. Connect two piece handle assembly, ensure that internal and external rods mate properly. Use screw provided to secure outer handle tube and cotter pin to secure external handle locator rod.
2. Loosen handle retaining bolt from yoke assembly, insert handle assembly and handle locator rod into yoke assembly. NOTE: Rotate release knob at top of handle to ensure that the internal handle rod is engaged within the yoke assembly fully. Tighten handle retaining bolt on yoke assembly.
3. Extract air hose assembly from initial storage position and attach to top of handle.
4. Add a few drops of air tool lubricant into air valve assembly.

AIR PURGE

1. Open release valve by rotating release knob at top of handle counterclockwise two turns.
2. Remove oil filler plug on side of hydraulic unit, ensure oil level is just below filler plug hole, reinstall plug.
3. Depress the air valve for 30 seconds.
4. Close release valve by rotating release knob at top of handle clockwise until firm. Do Not Overtighten.
5. Depress air valve until ram is fully extended.
6. Repeat if necessary.

LIFTING

1. Secure the vehicle by chocking wheels and apply parking brake.
2. Refer to vehicle manufacturer's recommended lifting points and position jack accordingly, ensure that load is centered on saddle.
3. Rotate release valve clockwise until tight.
4. Lock handle position using one of the three position of the handle locator.
5. Attach air valve to suitable air source (90-175 psi). Depress air valve until saddle makes contact with recommended lifting point, (ensure lifting point is aligned properly and safely). Raise load to desired height.
6. **WARNING:** During lifting ensure load and jack are stable, if either appear to be unstable, stop lifting, lower load and reposition jack.
7. **IMMEDIATELY** after reaching desired height, secure load with appropriately rated safety stands. (refer to vehicle manufacturer's recommended positioning)

LOWERING

1. Raise load high enough to remove safety stands.
2. **WARNING:** Ensure load does not shift or become unstable when lifting. If load is unstable, slowly lower load back on to the safety stands. Correct instability and try again.
3. Carefully remove safety stands.
4. Lower load slowly.

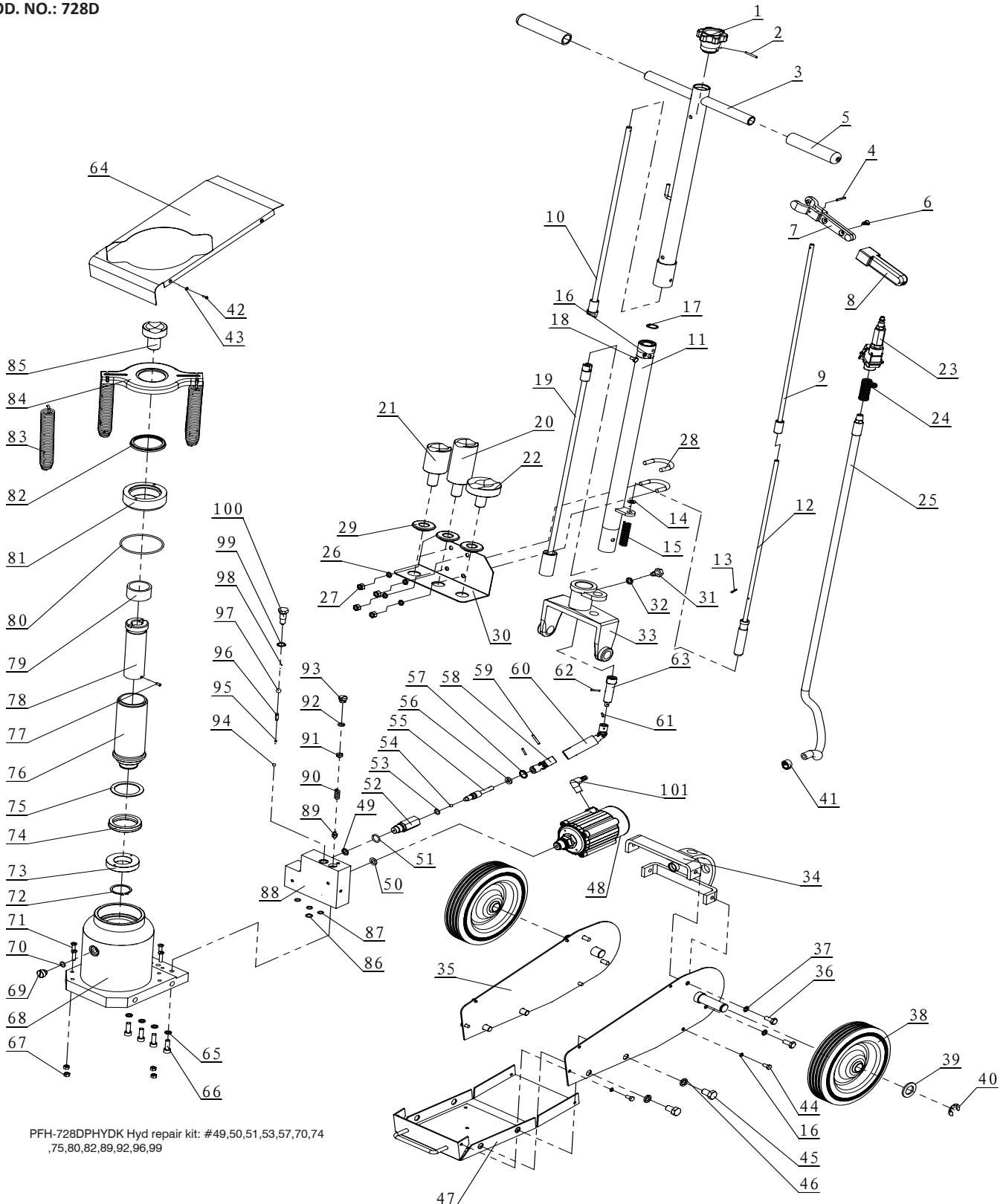


MAINTENANCE

1. Depending upon usage, periodically add a few drops of air tool oil to air inlet.
2. Store unit in fully retracted position to avoid rusting of lift piston.
3. Grease the extension screw threads with a general purpose grease
4. Keep saddle area clean and free of grease or dirt.

728D 22T AIR/HYD TRUCK AXLE JACK

PROD. NO.: 030645
MOD. NO.: 728D



728D 22T AIR/HYD TRUCK AXLE JACK

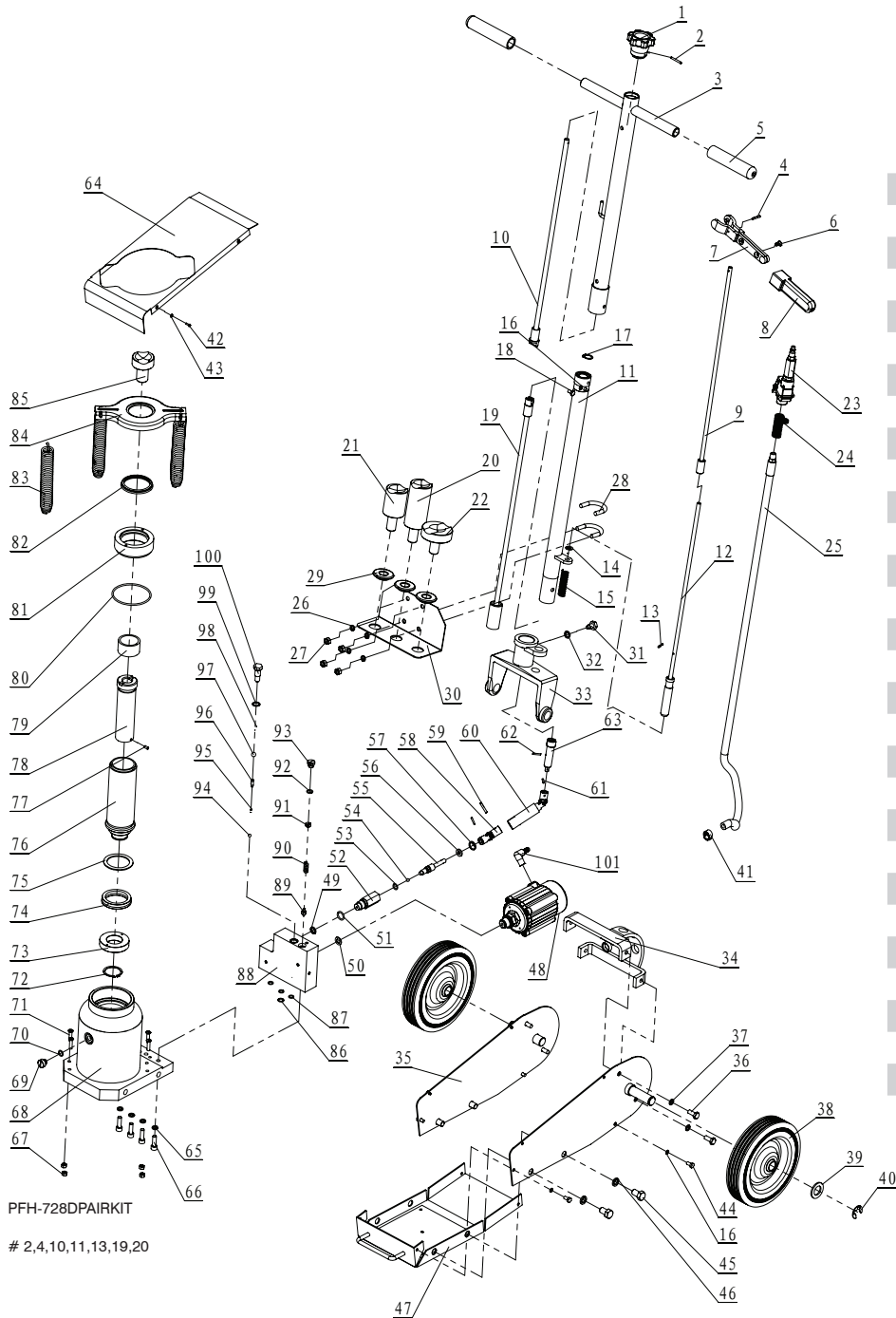
PROD. NO.: 030645

MOD. NO.: 728D

REF	PART NUMBER	DESCRIPTION	REQ	REF	PART NUMBER	DESCRIPTION	REQ	REF	PART NUMBER	DESCRIPTION	REQ
1	PFH-728D-01	KNOB	1	38	PFH-728D-38	WHEEL	2	75	PFH-728D-75	STOP RING	1
2	PFH-728D-02	SPRING PIN	1	39	PFH-728D-39	WASHER	2	76	PFH-728D-76	PISTON ROD ASSY	1
3	PFH-728D-03	HANDLE UPPER	1	40	PFH-728D-40	SNAP RING 15	2	77	PFH-728D-76	SPRING PIN	
4	PFH-728D-04	SPRING PIN	1	41	PFH-728D-41	HOSE BAND	1	78	PFH-728D-76	EXTENSION SCREW	
5	PFH-728D-05	HANDLE CAP	2	42	PFH-728D-42	SCREW	4	79	PFH-728D-76	HEAD NUT	
6	PFH-728D-06	SCREW	2	43	PFH-728D-43	SPRING WASHER 5	4	80	PFH-728D-80	O-RING	1
7	PFH-728D-07	LOCK LEVER	1	44	PFH-728D-44	BOLT M6X12	4	81	PFH-728D-81	SCREW BUSHING	1
8	PFH-728D-08	HANDLE CAP	1	45	PFH-728D-45	BOLT M12X20	4	82	PFH-728D-82	Y-SHAPE SEAL RING	1
9	PFH-728D-09	STOPPER UPPER	1	46	PFH-728D-46	SPRING WASHER 12	4	83	PFH-728D-83	SPRING	4
10	PFH-728D-10	ROD UPPER	1	47	PFH-728D-47	LOWER COVER	1	84	PFH-728D-84	SPRING SUPPORT	1
11	PFH-728D-11	HANDLE LOWER	1	48	PFH-728D-48	AIR MOTOR ASSEMBLY	1	85	PFH-728D-85	SADDLE	1
12	PFH-728D-12	STOPPER LOWER	1	49	PFH-728D-49	WASHER	1	86	PFH-728D-86	SEALING RING	1
13	PFH-728D-13	SPLIT PIN	1	50	PFH-728D-50	WASHER	1	87	PFH-728D-87	O-RING	3
14	PFH-728D-14	WASHER	1	51	PFH-728D-51	O-RING	1	88	PFH-728D-88	CYLINDER BASE	1
15	PFH-728D-15	SPRING	1	52	PFH-728D-52	GUIDE	1	89	PFH-728D-89	VALVE	1
16	PFH-728D-16	SPRING WASHER 6	5	53	PFH-728D-53	O-RING	1	90	PFH-728D-90	SPRING	1
17	PFH-728D-17	RETAINING RING 18	1	54	PFH-728D-54	STEEL BALL	1	91	PFH-728D-91	SCREW	1
18	PFH-728D-18	BOLT M6X10	1	55	PFH-728D-55	VALVE	1	92	PFH-728D-92	O-RING	1
19	PFH-728D-19	ROD LOWER	1	56	PFH-728D-56	WASHER	1	93	PFH-728D-93	SCREW	1
20	PFH-728D-20	ADAPTOR D	1	57	PFH-728D-57	STOP RING	1	94	PFH-728D-94	STEEL BALL	1
21	PFH-728D-21	ADAPTOR B	1	58	PFH-728D-58	JOINT	1	95	PFH-728D-95	SPRING	1
22	PFH-728D-22	ADAPTOR C	1	59	PFH-728D-59	SPRING PIN	1	96	PFH-728D-96	VALVE CORE	1
23	PFH-728D-23	AIR VALVE ASSEMBLY	1	60	PFH-728D-60	CONNECTING ASSEMBLY	1	97	PFH-728D-97	STEEL BALL	1
24	PFH-728D-24	SPRING	1	61	PFH-728D-61	SPRING PIN	2	98	PFH-728D-98	SPRING	1
25	PFH-728D-25	AIR HOSE	1	62	PFH-728D-62	SPLIT PIN	1	99	PFH-728D-99	WASHER	1
26	PFH-728D-26	SPRING WASHER 8	4	63	PFH-728D-63	CONNECTING ROD	1	100	PFH-728D-100	SCREW	1
27	PFH-728D-27	NUT M8	4	64	PFH-728D-64	UPPER COVER	1	93	PFH-728D-93	SCREW	1
28	PFH-728D-28	U-BOLT	2	65	PFH-728D-65	WASHER	4	94	PFH-728D-94	STEEL BALL	1
29	PFH-728D-29	RUBBER HOLDER	3	66	PFH-728D-66	SCREW M8X25	4	95	PFH-728D-95	SPRING	1
30	PFH-728D-30	HOLDER ADAPTOR	1	67	PFH-728D-67	NUT M6	4	96	PFH-728D-96	VALVE CORE	1
31	PFH-728D-31	BOLT	1	68	PFH-728D-68	CYLINDER BASE	1	97	PFH-728D-97	STEEL BALL	1
32	PFH-728D-32	SPRING WASHER 10	1	69	PFH-728D-69	SCREW	1	98	PFH-728D-98	SPRING	1
33	PFH-728D-33	HANDLE FORK	1	70	PFH-728D-70	O-RING	1	99	PFH-728D-99	WASHER	1
34	PFH-728D-34	FRAME	1	71	PFH-728D-71	SCREW M6X25	4	100	PFH-728D-100	SCREW	1
35	PFH-728D-35	HANDLE FORK BRACKET	2	72	PFH-728D-72	ELASTIC STOP RING	1	XX	PFH-728DPHY-DK	HYD KIT	1
36	PFH-728D-36	BOLT M8X20	4	73	PFH-728D-73	PISTON HEAD	1				
37	PFH-728D-37	SPRING WASHER 8	4	74	PFH-728D-74	Y-SHAPE SEAL RING	1				

728D 22T AIR/HYD TRUCK AXLE JACK

PROD. NO.: 030645
MOD. NO.: 728D



REF	PART NUMBER	DESCRIPTION	REQ
1	PFH-728D-P01	AIR PUMP BODY	1
2	PFH-728D-P02	SEAL	1
3	PFH-728D-P03	SHUTTLE VALVE	1
4	PFH-728D-P04	O-RING	1
5	PFH-728D-P05	SPONGE	1
6	PFH-728D-P06	PACKING WASHER	1
7	PFH-728D-P07	MUFFLER	1
8	PFH-728D-P08	WASHER	3
9	PFH-728D-P09	BOLT	3
10	PFH-728D-P10	SQUARE RING	2
11	PFH-728D-P11	O-RING	2
12	PFH-728D-P12	PISTON	1
13	PFH-728D-P13	WASHER	1
14	PFH-728D-P14	BLOCK	1
15	PFH-728D-P14	PLUNGER	1
16	PFH-728D-P16	SPRING	1
17	PFH-728D-P17	NUT	1
18	PFH-728D-P18	PACKING GUIDE	1
19	PFH-728D-P19	NL RETAINER	1
20	PFH-728D-P20	"Y"SEAL	1
21	PFH-728D-P21	COVER	1
22	PFH-728D-P22	WASHER	4
23	PFH-728D-P23	BOLT	4
24	PFH-728D-P24	ADJUSTING NUT	1
25	PFH-728D-P25	PLUNGER COVER	1
26	PFH-728D-P26	COVER	1
27	PFH-728D-P27	THREAD SEAL	1
XX	PFH-728DPAIRKIT	AIR REPAIR KIT	1

PFH-728DPAIRKIT
2,4,10,11,13,19,20