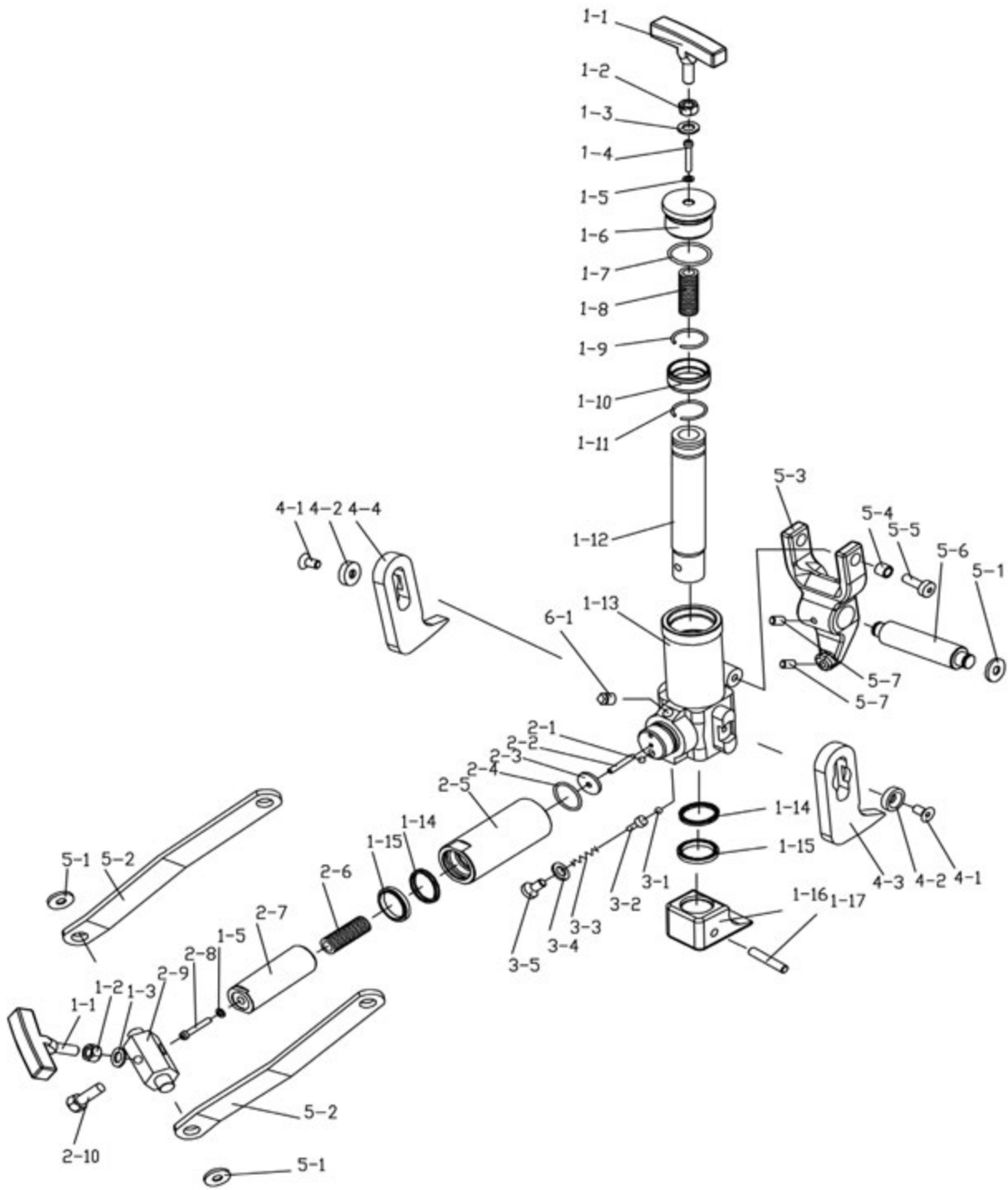


BEAD BREAKER PROD NO 030490 MODEL BBRKC



**BEAD BREAKER
PROD NO 030490 MODEL BBRKC**

REF	PART NUMBER	DESCRIPTION	REQ	REF	PART NUMBER	DESCRIPTION	REQ
1-1	PEP-030490-1-1	HANDLE	2	2-6	PEP-030490-2-6	SPRING	1
1-2	PEP-030490-1-2	M12 NUT	2	2-7	PEP-030490-2-7	PISTON ROD	1
1-3	PEP-030490-1-3	WASHER	2	2-8	PEP-030490-2-8	M5X70 SCREW	1
1-4	PEP-030490-1-4	M5X50 SCREW	1	2-9	PEP-030490-2-9	JOINT BLOCK	1
1-5	PEP-030490-1-5	COPPER WASHER	2	2-10	PEP-030490-2-10	M12X45 BOLT	1
1-6	PEP-030490-1-6	CYLINDER CAP	1	3-1	PEP-030490-3-1	O8 STEEL BALL	1
1-7	PEP-030490-1-7	O RING	1	3-2	PEP-030490-3-2	BALL SEAT	1
1-8	PEP-030490-1-8	SPRING A	1	3-3	PEP-030490-3-3	SPRING	1
1-9	PEP-030490-1-9	SNAP NNG	1	3-4	PEP-030490-3-4	COPPER WASHER	1
1-10	PEP-030490-1-10	BUSHING	1	3-5	PEP-030490-3-5	M12X20 SCREW	1
1-11	PEP-030490-1-11	SNAP RING	1	4-1	PEP-030490-4-1	M10X15 SCREW	2
1-12	PEP-030490-1-12	PISTON ROD	1	4-2	PEP-030490-4-2	BUSHING	2
1-13	PEP-030490-1-13	CYLINDER BODY	1	4-3	PEP-030490-4-3	LEFT FOOT	1
1-14	PEP-030490-1-14	Y-SEAL	2	4-4	PEP-030490-4-4	RIGHT FOOT	1
1-15	PEP-030490-1-15	BUSHING	2	5-1	PEP-030490-5-1	SNAP RING	4
1-16	PEP-030490-1-16	EXTRUSION LEG	1	5-2	PEP-030490-5-2	CONNECTION ROD	2
1-17	PEP-030490-1-17	PIN	1	5-3	PEP-030490-5-3	CLAW	1
2-1	PEP-030490-2-1	O6 STEEL BALL	1	5-4	PEP-030490-5-4	BUSHING	2
2-2	PEP-030490-2-2	M6X30 SCREW	1	5-5	PEP-030490-5-5	M10X25 SCREW	2
2-3	PEP-030490-2-3	WASHER	1	5-6	PEP-030490-5-6	SHAFT	1
2-4	PEP-030490-2-4	O RING	1	5-7	PEP-030490-5-7	SCREW	2
2-5	PEP-030490-2-5	CYLINDER	1	6-1	PEP-030490-6-1	PLUG	1