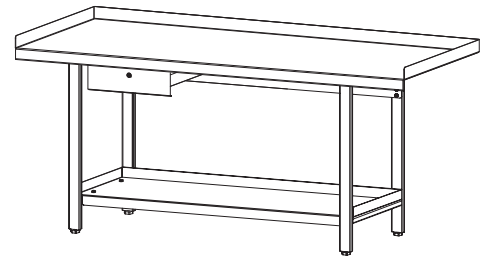
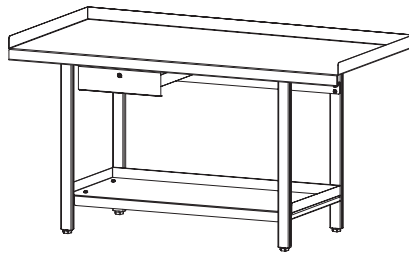
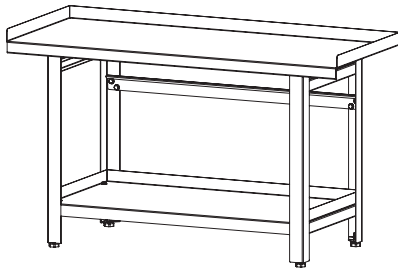


Workbenches

Prod. No. **843005**
Mod. No. **JSWB-6125**

Prod. No. **843006**
Mod. No. **JSWB-6131**

Prod. No. **843007**
Mod. No. **JSWB-7231**



Unpack your workbench and check to make sure that it was not damaged during transit and that all items are included.

WARNING

These workbenches are heavy. We strongly suggest that two people be used to unpack and assemble these workbenches.

SPECIFICATIONS

PROD. NO.	843005	843006	843007
DIMENSIONS	1,550 x 635 x 914 mm 61" x 25" x 36"	1,550 x 787 x 914 mm 61" x 31" x 36"	1,829 x 787 x 914 mm 72" x 31" x 36"
CAPACITY	1,300 lbs	1,400 lbs	1,400 lbs

PARTS BREAKDOWN

843005			843006			843007		
REF	DESCRIPTION	QTY	REF	DESCRIPTION	QTY	REF	DESCRIPTION	QTY
A	Workbench Top	1	AA	Workbench Top	1	AA	Workbench Top	1
B	Low Shelf	1	BB	Low Shelf	1	BB	Low Shelf	1
C	Left Open Leg	1	CC	Close Legs	2	CC	Close Legs	2
D	Right Open Leg	1	DD	Crossbar	1	DD	Crossbar	1
E	Crossbar	1	EE	M8 x 20 mm Bolts	16	EE	M8 x 20 mm Bolts	16
F	M10 x 20 mm Bolts	16	FF	Leveling Feet	4	FF	Leveling Feet	4
G	Leveling Feet	4	GG	Washers	16	GG	Washers	16
H	Nuts	12	HH	Drawer & Retaining Plate	1	HH	Drawer & Retaining Plate	1
I	Washers	28	II	Self-Tapping Screws	2	II	Self-Tapping Screws	2

ASSEMBLY

Left and Right Legs (see figures 1 & 2)

Attach the left and right legs to the workbench top and lower shelf:

1. Align the four holes at the top of the legs with the holes located at the mounting bracket.
2. Insert a bolt with a washer through each of the holes of the leg and then through the mounting bracket holes.
3. Place a washer and nut onto each of the bolts and hand tighten.

Note: Only open legs need the nuts for assembly.

4. Repeat the steps for the remaining leg.

Note: Do not fully tighten the nuts at this time.

Crossbar (see figures 1 & 2)

1. Attach crossbar to back of left and right legs.
2. Align crossbar end holes with the holes in the back of left and right legs.
3. Tighten bolts and washers through crossbar end holes into leg holes.

Note: Do not fully tighten the nuts at this time.

Lower Shelf (see figures 1 & 2)

1. Align the holes in the lower shelf with the holes in the legs.
 2. Insert a bolt through a washer then through each of the holes in the legs and through the holes in the lower shelf.
- Note:** Do not fully tighten the nuts at this time.
3. Set the workbench upright onto its feet. Make sure it is completely stable and resting on the legs, then fully tighten all nuts with a wrench.

Drawer (see figure 2)

1. Install the drawer by sliding it into place on the drawer runners.
2. Once drawer is in place on the drawer runners, align the holes of the retaining plate with the holes on the rear wall of the drawer.
3. Using the two self-tapping screws, fasten the drawer retaining plate to the rear of the drawer.

fig.1

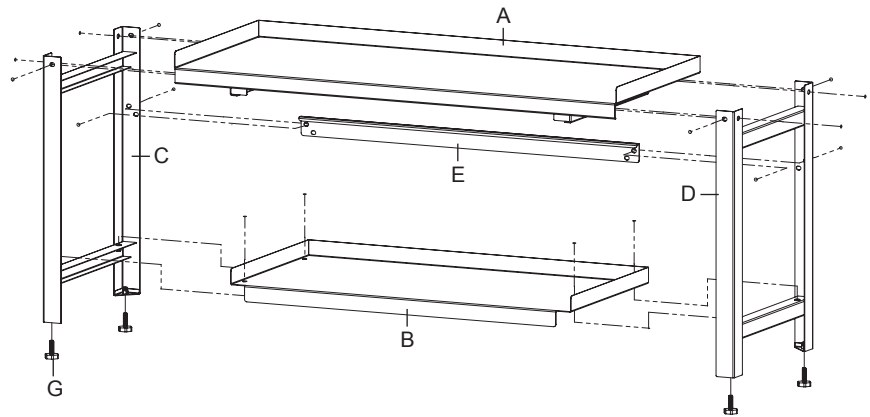
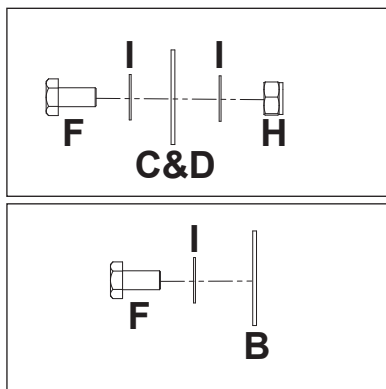


fig.2

