

NEW PRODUCT SUPPLEMENT AUTUMN 2019

FEATURING:



RATCHETING WRENCHES

JET is proud to introduce new sets, expanded sizes, and new styles of our top of the class 72 Tooth Ratcheting Combination Wrenches! JET Ratcheting Wrenches are among the World's strongest ratchet wrenches, with up to **70% more torque** than ANSI requirements, and feature our patented Torque-Drive non-slip open ends for safe, secure use on most fasteners.

- 12 point box ends for superior grip
- 72 tooth ratchet mechanism exceeds the ANSI torque ratings for a fixed wrench by more than 30%
- Superior grade 6140 Chrome Vanadium steel
- Flat style allows maximum access to confined areas – just flip wrench over to reverse
- Fully polished surface resists corrosion
- Complete with terylene pouch

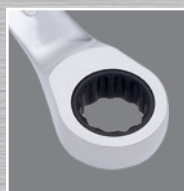
Ratcheting Stubby Wrench Set - SAE - 8 pc

700301 | SRCWS-8S



- Extra short pattern style allows access to confined areas

PROD. NO.	MOD. NO.	SIZES (INCHES)
700301	SRCWS-8S	5/16, 3/8, 7/16, 1/2, 9/16, 5/8, 11/16, 3/4



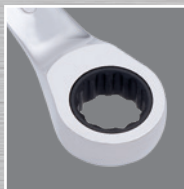
Ratcheting Stubby Wrench Set - Metric - 10 pc

700302 | SRCWS-10M



- Extra short pattern style allows access to confined areas

PROD. NO.	MOD. NO.	SIZES (mm)
700302	SRCWS-10M	10, 11, 12, 13, 14, 15, 16, 17, 18, 19

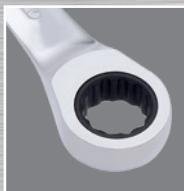


Ratcheting Double Box Wrench Set - SAE - 4 pc

700346 | RDBS-4S



PROD. NO.	MOD. NO.	SIZES (INCHES)
700346	RDBS-4S	5/16x3/8, 7/16x1/2, 9/16x5/8, 11/16x3/4



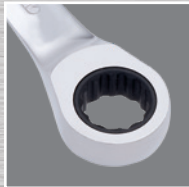
- Two sizes on every wrench for maximum versatility with minimum weight

Ratcheting Double Box Wrench Set - Metric - 6 pc

700396 | RDBS-6M

- Two sizes on every wrench for maximum versatility with minimum weight

PROD. NO.	MOD. NO.	SIZES (mm)
700396	RDBS-6M	8x9, 10x11, 12x13, 14x15, 16x18, 17x19

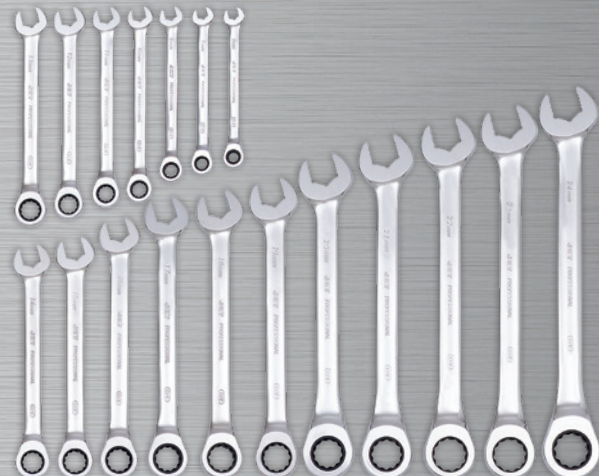
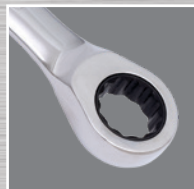


Ratcheting Wrench Set - Metric - 18 pc

700362 | RCWS-18M

- Exclusive TORQUE DRIVE® non-slip open ends

PROD. NO.	MOD. NO.	SIZES (mm)
700362	RCWS-18M	7, 8, 9, 10, 11, 12, 13, 14, 15, 16, 17, 18, 19, 20, 21, 22, 23, 24



Reversible Ratcheting Wrench Set - Metric - 18 pc

700373 | RCWS-18MR

- Same great features as flat style, but with reversing lever
- Allows 15° offset for clearance
- Exclusive TORQUE DRIVE® non-slip open ends

PROD. NO.	MOD. NO.	SIZES (mm)
700373	RCWS-18MR	7, 8, 9, 10, 11, 12, 13, 14, 15, 16, 17, 18, 19, 20, 21, 22, 23, 24



OUR FAMILY OF TOOL, EQUIPMENT & SAFETY BRANDS



surewerx.com