

Adjustable Height Under-Hood ABS Tool Tray – 100 lb Capacity

Prod. No. **843017**
Mod. No. **JUHT-100A**

SPECIFICATIONS

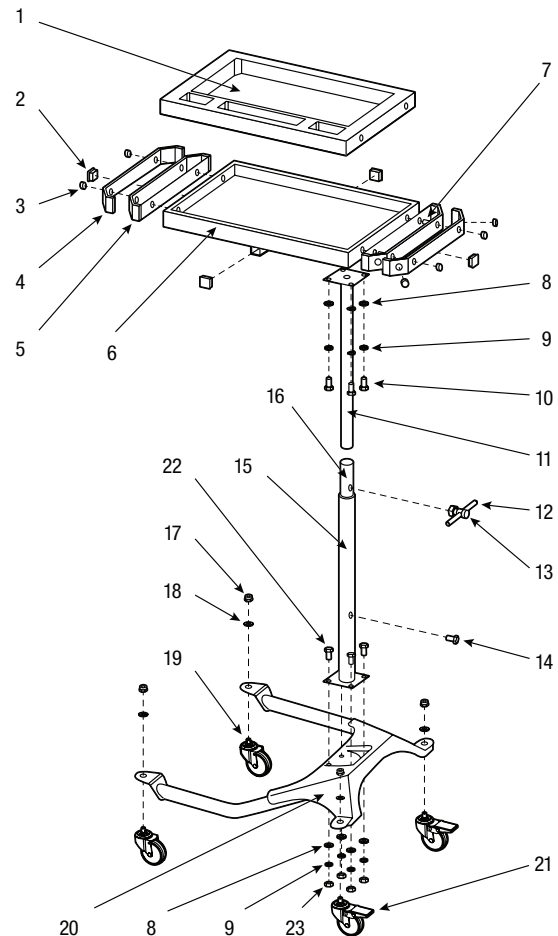
| | |
|--------------------------------|------------------------|
| Overall Tray Dimensions | 31.85" x 18" x 1.67" |
| Main Tray Area | 22.8" x 12.125" x 1.5" |
| Low Height | 35.85" |
| High Height | 48.4" |
| Overall Length | 31.875" |
| Overall Width | 28" |

PARTS BREAKDOWN

| REF | DESCRIPTION | QTY | REF | DESCRIPTION | QTY |
|-----|--------------------|-----|-----|-----------------------|-----|
| 1 | ABS Tool Tray | 1 | 13 | Rubber Cap | 1 |
| 2 | Plastic Tube Cap | 4 | 14 | Bolt M5 x 8mm | 1 |
| 3 | Plastic Insert | 8 | 15 | Protect Foam | 1 |
| 4 | Bumper | 2 | 16 | Leg | 1 |
| 5 | Tool Holder | 2 | 17 | Locking nut M10 | 4 |
| 6 | Steel Top Tray | 1 | 18 | Flat Washer M12 | 4 |
| 7 | Bolt M8 x 16mm | 4 | 19 | 3" PVC Swivel Caster | 2 |
| 8 | Flat Washer M8 | 8 | 20 | Bottom Frame | 1 |
| 9 | Spring Washer M8 | 8 | 21 | 3" PVC Locking Caster | 2 |
| 10 | Bolt M6 x 16mm | 4 | 22 | Bolt M8 x 25mm | 4 |
| 11 | Inner Support Tube | 1 | 23 | Nut M8 | 4 |
| 12 | Adjust Knob | 1 | | | |

WARNING

Read and follow all instructions in User's Manual. • Do not load work table beyond rated capacity (100 lbs.) • Apply brake on locking casters anytime cart is in place. • Work table is designed to roll easily on flat surfaces and should not be used on uneven or inclined surfaces. • Do not stand on work table. • Do not pull work table. • Work table can tip or fall causing damage or injury. • Keep children away from work table • Wear gloves when lifting by edges • Failure to heed these warnings may result in personal injury and/or property damage.



A



Brand

surewerx.com

TOOLS NEEDED TO ASSEMBLE UNIT

17 and 14 mm Wrench

ASSEMBLY & INSTALLATION

1. Fig. A. Place #1 ABS tool tray on top of the steel top tray #6
2. Fig. A. Use #7 bolt to connect the #5 tool holder to the #1 ABS tray and tighten by hand to avoid holders coming off.
3. Fig. B. Connect #6 steel top tray and the #11 inner tube by using the #8 flat washer, #9 spring washer, and the #10 bolt to fasten all parts to the tray.
4. Fig. C. Use the #17 locking nut and the #18 flat washer to assemble the #19 swivel casters and #21 locking caster to the #20 bottom frame.
5. Fig. C. Make sure that the #21 locking casters are positioned on the rear of the frame as per diagram.
6. Fig. D. Use the #22 bolt, #8 flat washer, #9 spring washer and the #10 bolt to connect the #16 leg to the #20 bottom frame.
7. Fig. D. Slide the bottom of the cart over top of the #11 inner support tube.
8. Before righting the table make sure that all assembly parts have been used.
9. You are now ready to use your new JET JUHT-100A tool cart.

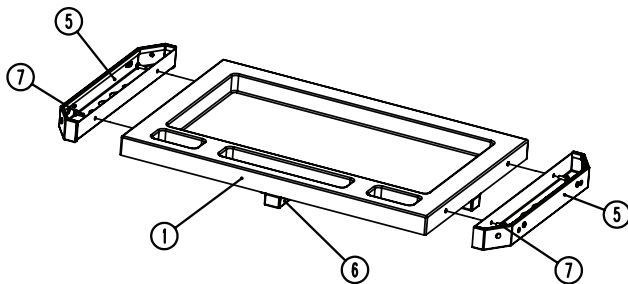


Fig. A

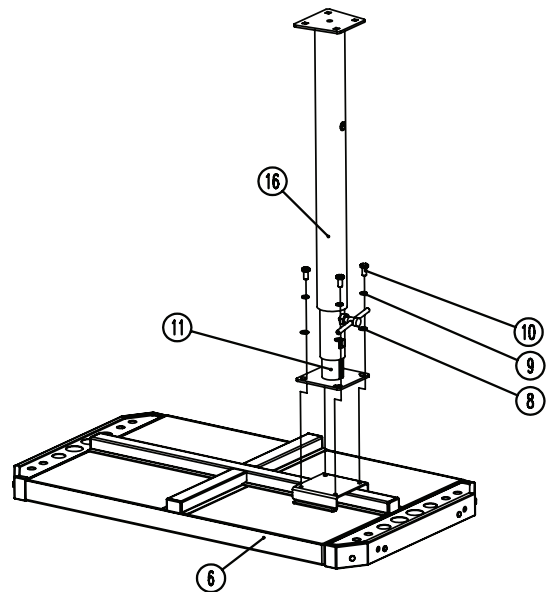


Fig. B

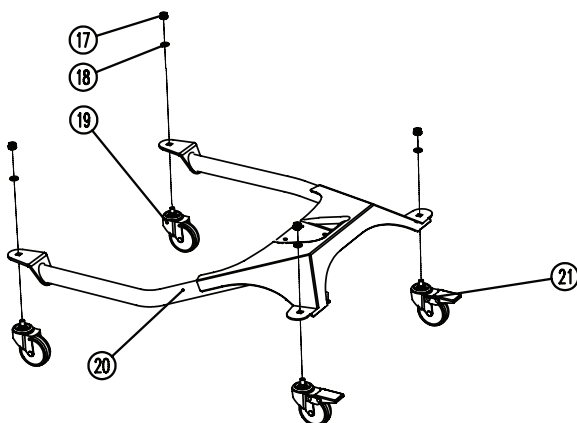


Fig. C

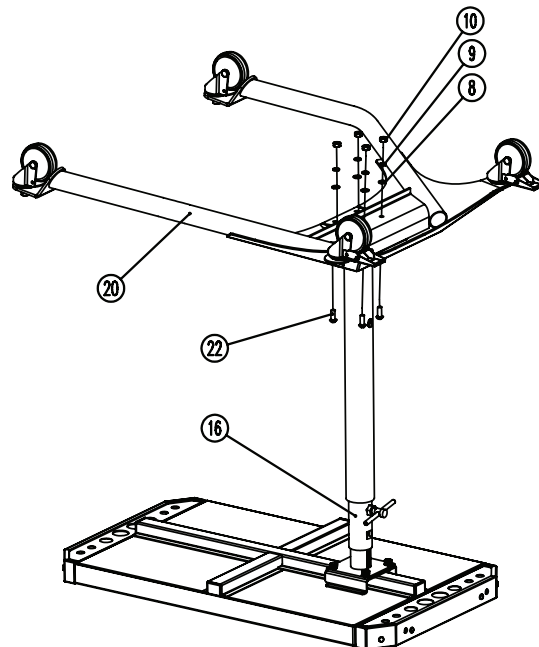


Fig. D

CAUTION

DO NOT EXCEED THE 100 LB-RATED CAP