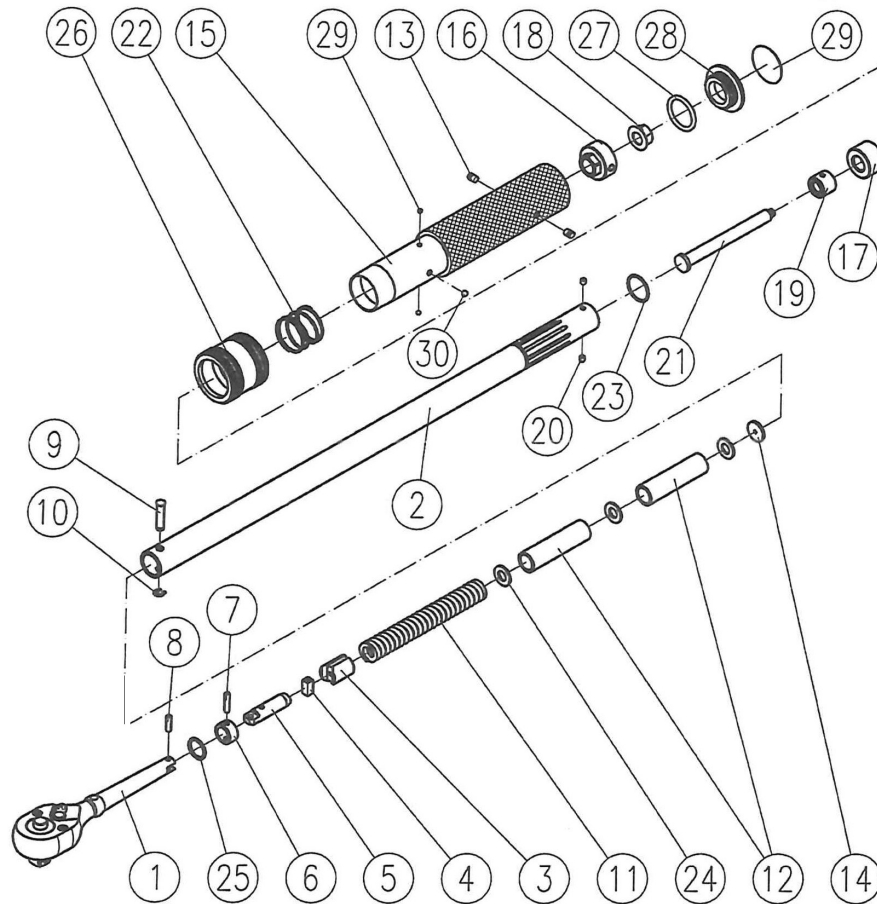


# 1/2" DR Industrial Torque Wrench

Prod. No. 718976 Mod. No. JITW-12250



## PDN-JITW12250-RK Repair Kit

Ref.	Part Number	Description	Ref.	Part Number	Description
1	PDN-JITW12250-01	Ratchet Body Assembly	17	PDN-JITW12250-17	M10 Nut
2	PDN-JITW12250-02	Steel Tube	18	PDN-JITW12250-18	Flange Nut
3	PDN-JITW12250-03	Cam	19	PDN-JITW12250-19	Tube Insert
4	PDN-JITW12250-04	Pawl	20	PDN-JITW12250-20	Insert Retaining Pin
5	PDN-JITW12250-05	Click Arm	21	PDN-JITW12250-21	Adjustment Shaft
6	PDN-JITW12250-06	Fulcrum	22	PDN-JITW12250-22	Lock Ring Spring
7	PDN-JITW12250-07	Fulcrum Pivot Pin	23	PDN-JITW12250-23	O-Ring for Tube
8	PDN-JITW12250-08	Arm Pivot Pin	24	PDN-JITW12250-24	Spring Shim
9	PDN-JITW12250-09	Head Pivot Pin	25	PDN-JITW12250-25	O-Ring for Head
10	PDN-JITW12250-10	C-Clip	26	PDN-JITW12250-26	Lock Ring
11	PDN-JITW12250-11	Scale Spring	27	PDN-JITW12250-27	O-Ring for End Cap
12	PDN-JITW12250-12	Spacer	28	PDN-JITW12250-28	End Cap
14	PDN-JITW12250-14	Thrust Shim	29	PDN-JITW12250-29	Poly
13	PDN-JITW12250-13	Handle Lock Insert Assy	30	PDN-JITW12250-30	Ball 2.7mm
15	PDN-JITW12250-13	Handle Lock Insert Assy	31	PDN-JITW12250-31	Ball 3.5mm
16	PDN-JITW12250-13	Handle Lock Insert Assy			