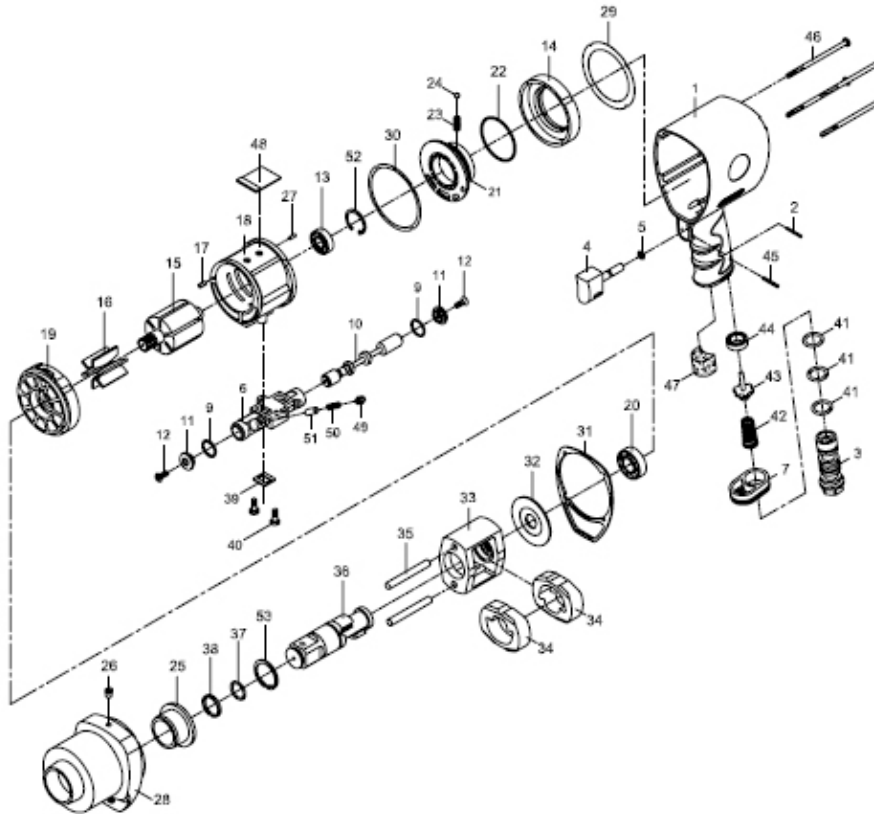


**AW25CSD 1"DR PISTOL GRP IMP WR PRODUCT # 400424**



REF	PART NUMBER	DESCRIPTION	REQ	REF	PART NUMBER	DESCRIPTION	REQ
01	PSM-AW25CSD-01	MOTOR HOUSING	1	28	PSM-AW25CSD-28	HAMMER CASE	1
02	PSM-AW25CSD-02	SPRING PIN (2X20)	1	29	PSM-AW25CSD-29	GASKET	1
03	PSM-AW25CSD-03	AIR INLET	1	30	PSM-AW25CSD-30	GASKET	1
04	PSM-AW25CSD-04	TRIGGER	1	31	PSM-AW25CSD-31	GASKET	1
05	PSM-AW25CSD-05	O-RING (4X1)	1	32	PSM-AW25CSD-32	WASHER	1
06	PSM-AW25CSD-06	REVERSE VALVE	1	33	PSM-AW25CSD-33	HAMMER CAGE	1
07	PSM-AW25CSD-07	EXHAUST DIFFUSER	1	34	PSM-AW25CSD-34	HAMMER	2
09	PSM-AW25CSD-09	O-RING (15.5X1.5)	2	35	PSM-AW25CSD-35	HAMMER PIN	2
10	PSM-AW25CSD-10	REVERSE STEM	1	36	PSM-AW25CSD-36	ANVIL (1")	1
11	PSM-AW25CSD-11	BUTTON	2	37	PSM-AW25CSD-37	O-RING (17.8X2.4)	1
12	PSM-AW25CSD-12	SCREW (M3X8)	2	38	PSM-AW25CSD-38	RETAINING RING	1
13	PB6001-2Z	BALL BEARING	1	39	PSM-AW25CSD-39	GASKET	1
14	PSM-AW25CSD-14	FIXED RING	1	40	PSM-AW25CSD-40	SCREW	2
15	PSM-AW25CSD-15	ROTOR	1	41	PSM-AW25CSD-41	O-RING (15.8X2.4)	3
16	PSM-AW25CSD-16	ROTOR BLADE	6	42	PSM-AW25CSD-42	VALVE SPRING	1
17	PSM-AW25CSD-17	SPRING PIN (2.5X5)	1	43	PSM-AW25CSD-43	VALVE STEM	1
18	PSM-AW25CSD-18	CYLINDER	1	44	PSM-AW25CSD-44	RUBBER SPACER	1
19	PSM-AW25CSD-19	FRONT END PLATE	1	45	PSM-AW25CSD-45	SPRING PIN (2.5X20)	1
20	PB6003-2Z	BALL BEARING	1	46	PSM-AW25CSD-46	SCREW (M6X110)	4
21	PSM-AW25CSD-21	AIR REGULATOR	1	47	PSM-AW25CSD-47	MUFFLER MATERIAL	1
22	PSM-AW25CSD-22	O-RING (45.5X2)	1	48	PSM-AW25CSD-48	MUFFLER MATERIAL	1
23	PSM-AW25CSD-23	SPRING	1	49	PSM-AW25CSD-49	SET SCREW	1
24	PSM-AW25CSD-24	PIN	1	50	PSM-AW25CSD-50	SPRING	1
25	PSM-AW25CSD-25	ANVIL BUSHING	1	51	PSM-AW25CSD-51	PIN	1
26	PSM-AW25CSD-26	OIL CAP (1/8")	1	52	PSM-AW25CSD-52	RET RING (RTW-28)	1
27	PSM-AW25CSD-27	SPRING PIN (2X5)	1	53	PSM-AW25CSD-53	INVERTED RET RING	1