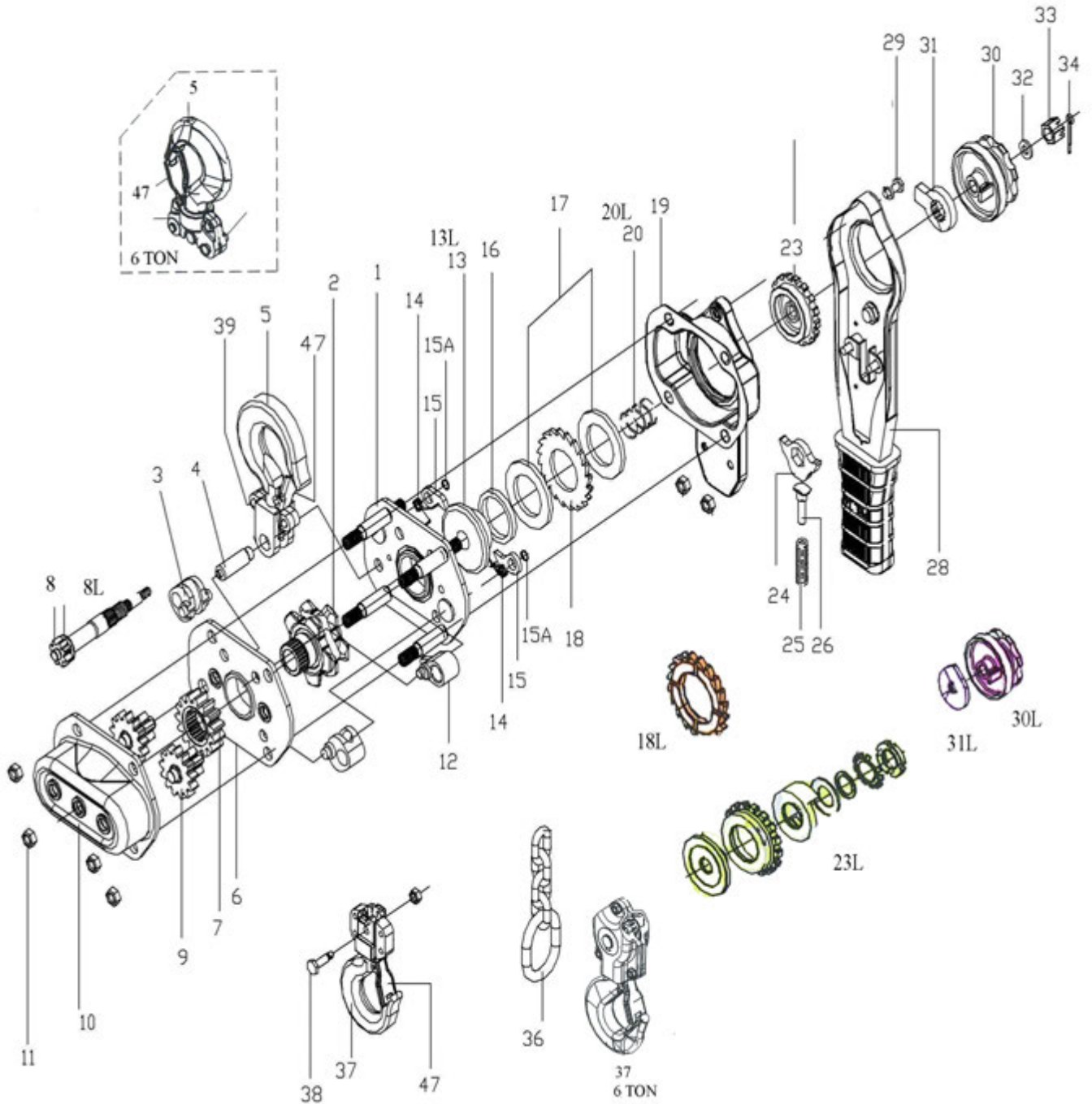


KLP LEVER HOIST PRODUCT # 110402,403,404,405,412,413,414



**ITEMS WITH L AFTER REF # FOR OVERLOAD SYSTEM ONLY**

# KLP LEVER HOIST PRODUCT # 110402,403,404,405,412,413,414

REF	PART NUMBER	PART NUMBER	PART NUMBER	PART NUMBER	PART NUMBER	DESCRIPTION	REQ
1	PVI-KLP75-1	PVI-KLP150-1	PVI-KLP300-1	PVI-KLP600-1	PVI-KLP600-1	LEFT SIDE PLATE ASSEMBLY	1
2	PVI-KLP75-2	PVI-KLP150-2	PVI-KLP300-2	PVI-KLP600-2	PVI-KLP600-2	SPROCKET	1
3	PVI-KLP75-3	PVI-KLP150-3	PVI-KLP300-3	PVI-KLP600-3	PVI-KLP600-3	CHAIN GUIDE	2
5	PVI-KLP75-5	PVI-KLP150-5	PVI-KLP300-5	PVI-KLP600-5	PVI-KLP600-5	TOP HOOK ASSEMBLY, 4,5,47,48	1
6	PVI-KLP75-6	PVI-KLP150-6	PVI-KLP300-6	PVI-KLP600-6	PVI-KLP600-6	RIGHT SIDE PLATE ASSEMBLY	1
7	PVI-KLP75-7	PVI-KLP150-7	PVI-KLP300-7	PVI-KLP600-7	PVI-KLP600-7	SPLINED GEAR	1
8	PVI-KLP75-8	PVI-KLP150-8	PVI-KLP300-8	PVI-KLP600-8	PVI-KLP600-8	DRIVING PINION	1
8L	PVI-KLP75-8L	PVI-KLP150-8L	PVI-KLP300-8L			DRIVING PINION OVERLOAD	1
9	PVI-KLP75-9	PVI-KLP150-9	PVI-KLP300-9	PVI-KLP600-9	PVI-KLP600-9	PINION DISC GEAR SET	1
10	PVI-KLP75-10	PVI-KLP150-10	PVI-KLP300-10	PVI-KLP600-10	PVI-KLP600-10	GEAR COVER ASSEMBLY	1
11	PVI-KLP75-11	PVI-KLP150-11	PVI-KLP300-11	PVI-KLP600-11	PVI-KLP600-11	LOCKING NUT	8
12	PVI-KLP75-12	PVI-KLP150-12	PVI-KLP300-12	PVI-KLP600-12	PVI-KLP600-12	CHAIN STRIPPER	1
13	PVI-KLP75-13	PVI-KLP150-13	PVI-KLP300-13	PVI-KLP600-13	PVI-KLP600-13	BRAKE SEAT	1
13L	PVI-KLP75-13L	PVI-KLP150-13L	PVI-KLP300-13L			BRAKE SEAT OVERLOAD	1
14	PVI-KLP75-14	PVI-KLP150-14	PVI-KLP300-14	PVI-KLP600-14	PVI-KLP600-14	PAWL SPRING EACH	2
15	PVI-KLP75-15	PVI-KLP150-15	PVI-KLP300-15	PVI-KLP600-15	PVI-KLP600-15	PAWL EACH	2
16	PVI-KLP75-16	PVI-KLP150-16	PVI-KLP300-16	PVI-KLP600-16	PVI-KLP600-16	BUSHING	1
17	PVI-KLP75-17	PVI-KLP150-17	PVI-KLP300-17	PVI-KLP600-17	PVI-KLP600-17	FRICITION DISC (1 SET = 2 PCS)	1
18	PVI-KLP75-18	PVI-KLP150-18	PVI-KLP300-18	PVI-KLP600-18	PVI-KLP600-18	RATCHET DISC	1
18L	PVI-KLP75-18L	PVI-KLP150-18L	PVI-KLP300-18L			FUSED BRAKE DISC	1
20	PVI-KLP75-20	PVI-KLP150-20	PVI-KLP300-20	PVI-KLP600-20	PVI-KLP600-20	SPRING	1
20L	PVI-KLP75-20L	PVI-KLP150-20L	PVI-KLP300-20L			SPRING OVERLOAD	1
23	PVI-KLP75-23	PVI-KLP150-23	PVI-KLP300-23	PVI-KLP600-23	PVI-KLP600-23	CHANGE OVER GEAR	1
19	PVI-KLP75-19	PVI-KLP150-19	PVI-KLP300-19	PVI-KLP600-19	PVI-KLP600-19	HANDLE COVER ASSEMBLY	1
24	PVI-KLP75-24	PVI-KLP150-24	PVI-KLP300-24	PVI-KLP600-24	PVI-KLP600-24	CHANGE OVER PAWL ASS 25,26	1
27	PVI-KLP75-27	PVI-KLP150-27	PVI-KLP300-27	PVI-KLP600-27	PVI-KLP600-27	HANDLE SLEEVE	1
28	PVI-KLP75-28	PVI-KLP150-28	PVI-KLP300-28			LEVER HANDLE ASSY	1
30	PVI-KLP75-30	PVI-KLP150-30	PVI-KLP300-30	PVI-KLP600-30	PVI-KLP600-30	HAND WHEEL ASSY 31,32,33,34	1
30L	PVI-KLP75-30L	PVI-KLP150-30L	PVI-KLP300-30L			HAND WHEEL OVERLOAD	1
31L	PVI-KLP75-31L	PVI-KLP150-31L	PVI-KLP300-31L			STOP KNOB	1
36	PVI-KLP75-36	PVI-KLP150-36	PVI-KLP300-36	PVI-KLP600-36	PVI-KLP600-36	END CHAIN RING	1
37	PVI-KLP75-37	PVI-KLP150-37	PVI-KLP300-37	PVI-KLP600-37	PVI-KLP600-37	BOTTOM HOOK ASSEMBLY	1
47	PVI-KLP75-47	PVI-KLP150-47	PVI-KLP300-47	PVI-KLP600-47	PVI-KLP600-47	SAFETY LATCH KIT	1