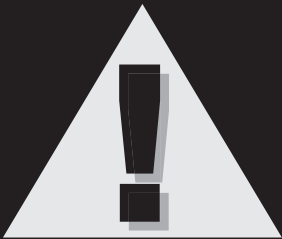




22 Ton Air/Hydraulic Truck Axle Jack Owner's Manual



WARNING:

IMPORTANT: READ THESE INSTRUCTIONS AND ALL WARNINGS PRIOR TO USING THIS EQUIPMENT. UNDERSTAND ALL OPERATING PROCEDURES, SAFETY WARNINGS AND MAINTENANCE REQUIREMENTS. FAILURE TO DO SO COULD CAUSE AN ACCIDENT RESULTING IN SERIOUS OR FATAL INJURY AND/OR PERSONAL PROPERTY DAMAGE.

A



WARNING!

The use of portable automotive lifting devices is subject to certain hazards that cannot be prevented by mechanical means, but only by exercise of intelligence, care, and common sense. It is therefore essential to have personnel involved in the use and operation of equipment who are careful, competent, trained, and qualified in the safe operation of this equipment and its proper use when servicing motor vehicles and their components. Examples of hazards are dropping, tipping, or slipping of motor vehicles or their components caused primarily by improperly securing loads, overloading, off-centered loads, use on other than hard level surfaces, and using equipment for a purpose for which it was not designed.

The owner and / or operator shall study and understand the product and safety instructions before operating this equipment. Safety information shall be emphasized and understood.

If the operator is not fluent in English, the product and safety instructions shall be read to and discussed with the operator in the operator's native language by the purchaser / owner or his designee, making sure that the operator comprehends their contents. A copy of these instructions / warnings shall be retained for future reference.



INSPECTION

Visual inspection shall be made before each use of this equipment, checking for abnormal conditions, such as cracked welds, leaks, damaged, loose or missing parts. This equipment shall be removed immediately from service if it is believed to have been subjected to an abnormal or shock load, the equipment shall be inspected by a qualified repair facility. Owners and / or operators should be aware that repair of this equipment may require specialized knowledge and facilities. It is recommended that this equipment be inspected annually by a qualified repair facility. Defective parts, decals, safety labels or signs should be replaced with Strongarm specified parts.



WARNING!

- Prior to lifting a vehicle, refer to vehicle manufacturer's recommended lifting points.
- Inspect the jack prior to each use, remove from service if it is leaking, damaged, excessively worn, or has been altered in any way.
- This jack was designed for lifting purposes only. Do not attempt to work on the vehicle until appropriately rated jacks stands are supporting the load.
- Do not exceed rated capacity.
- Do not move or dolly the vehicle while on jack.
- Chock vehicle to prevent movement.
- Center load on saddle, off center loads may cause jack failure and / or loss of load.
- Use jack on a hard level surface.
- Only attachments and / or adapters supplied by the manufacturer shall be used.
- No alterations shall be made to this product.
- Failure to heed these markings may result in severe or fatal personal injury and / or property damage.
- Keep children and unauthorized persons away from the work area.
- Remove ill-fitting clothing. Remove ties, watches, rings, and other loose jewelry, and contain long hair.
- Wear ANSI-approved safety goggles when operating the jack.
- Keep proper balance and footing, do not overreach, and wear nonslip footwear.
- Only use this jack on a surface that is stable, level, dry and not slippery, and capable of sustaining the load.
- Keep the surface clean, tidy, and free from unrelated materials, and ensure that there is adequate lighting.
- DO NOT operate the jack when you are tired or under the influence of alcohol, drugs, or any intoxicating medication.
- DO NOT allow untrained persons to operate the jack.
- DO NOT make any modifications to the jack.

- DO NOT use brake fluid or any other improper fluid, and avoid mixing different types of oil when adding hydraulic oil. Only a good-quality hydraulic-jack oil can be used.
- DO NOT expose the jack to rain or any other kind of bad weather.

WARNING: the warnings, cautions, and instructions discussed in this instruction manual cannot cover all possible conditions and situations that may occur. It must be understood by the operator that common sense and caution are factors which cannot be built into this product, but must be supplied by the operator.



SET UP

ASSEMBLY

1. Connect two piece handle assembly, ensure that internal and external rods mate properly. Use screw provided to secure outer handle tube and cotter pin to secure external handle locator rod.
2. Loosen handle retaining bolt from yoke assembly, insert handle assembly and handle locator rod into yoke assembly. NOTE: Rotate release knob at top of handle to ensure that the internal handle rod is engaged within the yoke assembly fully. Tighten handle retaining bolt on yoke assembly.
3. Extract air hose assembly from initial storage position and attach to top of handle.
4. Add a few drops of air tool lubricant into air valve assembly.

AIR PURGE

1. Open release valve by rotating release knob at top of handle counterclockwise two turns.
2. Remove oil filler plug on side of hydraulic unit, ensure oil level is just below filler plug hole.
3. Depress the air valve for 30 seconds.
4. Close release valve by rotating release knob at top of handle clockwise until firm. Do Not Overtighten. Reinstall plug.
5. Depress air valve until ram is fully extended.
6. Repeat if necessary.

LIFTING

1. Secure the vehicle by chocking wheels and apply parking brake.
2. Refer to vehicle manufacturer's recommended lifting points and position jack accordingly, ensure that load is centered on saddle.
3. Rotate release valve clockwise until tight.
4. Lock handle position using one of the three position of the handle locator.
5. Attach air valve to suitable air source (100-120 psi). Depress air valve until saddle makes contact with recommended lifting point, (ensure lifting point is aligned properly and safely). Raise load to desired height.
6. **WARNING:** During lifting ensure load and jack are stable, if either appear to be unstable, stop lifting, lower load and reposition jack.
7. **IMMEDIATELY** after reaching desired height, secure load with appropriately rated safety stands. (refer to vehicle manufacturer's recommended positioning)

LOWERING

1. Raise load high enough to remove safety stands.
2. **WARNING:** Ensure load does not shift or become unstable when lifting. If load is unstable, slowly lower load back on to the safety stands. Correct instability and try again.
3. Carefully remove safety stands.
4. Lower load slowly.

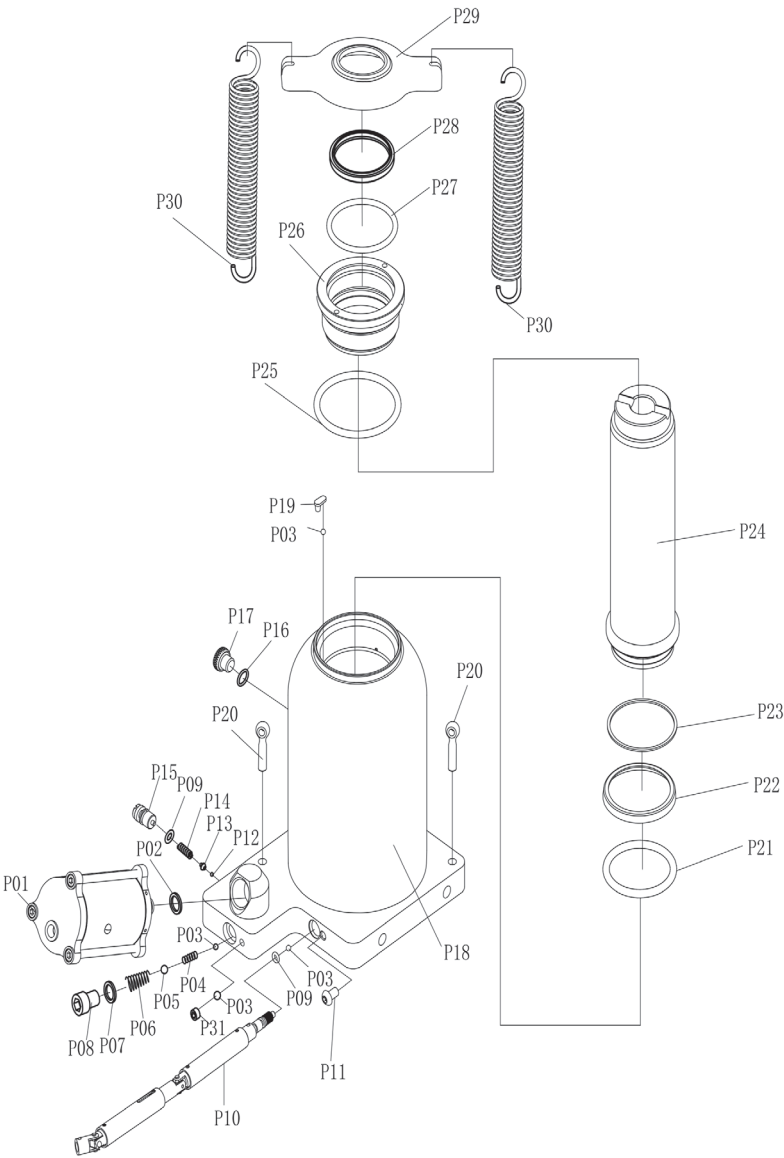


MAINTENANCE

1. Depending upon usage, periodically add a few drops of air tool oil to air inlet.
2. Store unit in fully retracted position to avoid rusting of lift piston.
3. Grease the extension screw threads with a general purpose grease
4. Keep saddle area clean and free of grease or dirt.

22-TON A/H TRUCK AXLE JACK

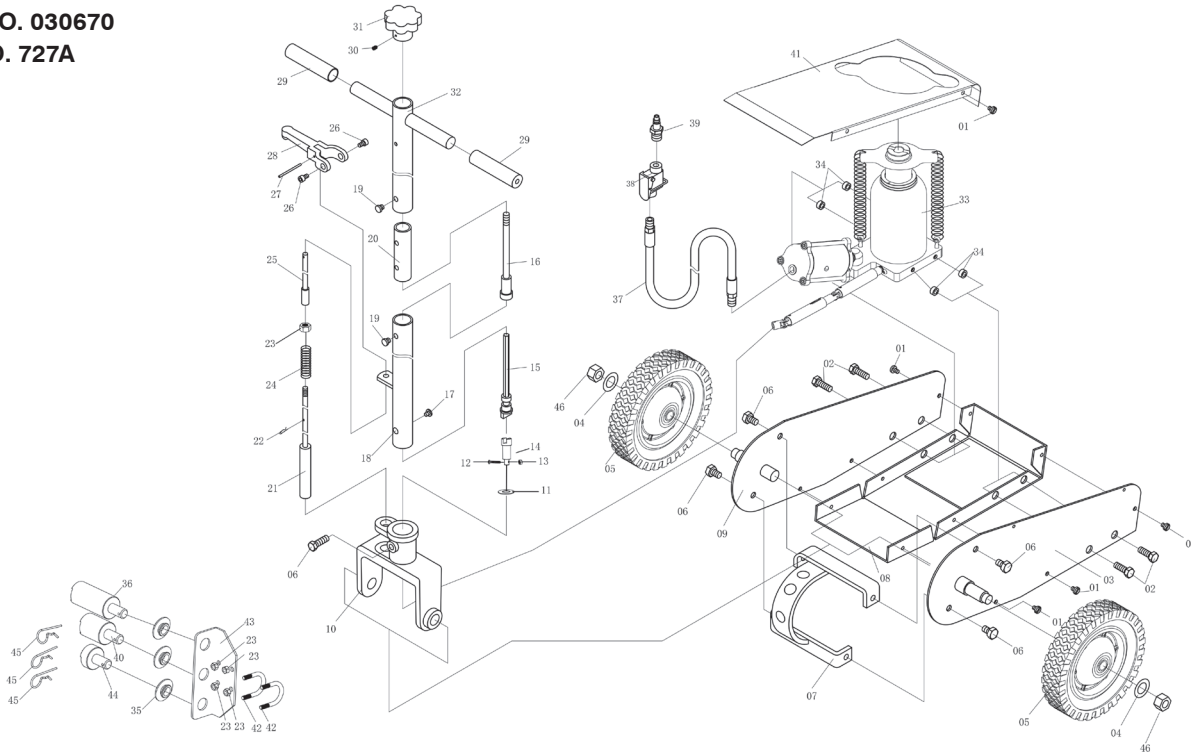
PROD. NO. 030670
MOD. NO. 727A



REF	PART NUMBER	DESCRIPTION	REQ
P01	PCN-727A-P01	Air Motor	1
P02	PCN-727A-P02	Copper Washer	1
P03	PCN-727A-P03	Steel Ball	4
P04	PCN-727A-P04	Spring	1
P05	PCN-727A-P05	Steel Ball	1
P06	PCN-727A-P06	Spring	1
P07	PCN-727A-P07	Copper Washer	1
P08	PCN-727A-P08	Screw	1
P09	PCN-727A-P09	O-Ring	1
P10	PCN-727A-P10	Release Valve	1
P11	PCN-727A-P11	Screw	1
P12	PCN-727A-P12	Steel Ball	1
P13	PCN-727A-P13	Steel Ball Seat	1
P14	PCN-727A-P14	Spring	1
P15	PCN-727A-P15	Screw	1
P16	PCN-727A-P16	O-Ring	1
P17	PCN-727A-P17	Screw	1
P18	PCN-727A-P18	Pump Base	1
P19	PCN-727A-P19	Stop Plate	1
P20	PCN-727A-P20	Bolt	2
P21	PCN-727A-P21	O-Ring	1
P22	PCN-727A-P22	Seal Ring	1
P23	PCN-727A-P23	Nylon Washer	1
P24	PCN-727A-P24	Piston	1
P25	PCN-727A-P25	O-Ring	1
P26	PCN-727A-P26	Limited Ring	1
P27	PCN-727A-P27	O-Ring	1
P28	PCN-727A-P28	Dust Ring	1
P29	PCN-727A-P29	Hook	1
P30	PCN-727A-P30	Spring	2
P31	PCN-727A-P31	Screw	1

22-TON A/H TRUCK AXLE JACK

PROD. NO. 030670
MOD. NO. 727A



REF	PART NUMBER	DESCRIPTION	REQ	REF	PART NUMBER	DESCRIPTION	REQ
1	PCN-727A-01	Screw	10	24	PCN-727A-24	Spring	1
2	PCN-727A-02	Bolt	4	25	PCN-727A-25	Extension Rod	1
3	PCN-727A-03	Right Frame	1	26	PCN-727A-26	Screw	2
4	PCN-727A-04	Washer	2	27	PCN-727A-27	Pin	1
5	PCN-727A-05	Wheel	2	28	PCN-727A-28	Handle	1
6	PCN-727A-06	Bolt	5	29	PCN-727A-29	Cover	2
7	PCN-727A-07	Handle Location	1	30	PCN-727A-30	Screw	1
8	PCN-727A-08	Base	1	31	PCN-727A-31	Knob	1
9	PCN-727A-09	Left Frame	1	32	PCN-727A-32	Upper Handle	1
10	PCN-727A-10	Handle Seat	1	33	PCN-727A-33	Pump	1
11	PCN-727A-11	Washer	1	34	PCN-727A-34	Washer	4
12	PCN-727A-12	Screw	1	35	PCN-727A-35	Protection	3
13	PCN-727A-13	Nut	1	36	PCN-727A-36	Saddle3	1
14	PCN-727A-14	Connector	1	37	PCN-727A-37	Air Inlet Hose	1
15	PCN-727A-15	Link Rod	1	38	PCN-727A-38	Air Valve	1
16	PCN-727A-16	Link Rod	1	39	PCN-727A-39	Air Connector	1
17	PCN-727A-17	Screw	1	40	PCN-727A-40	Saddle2	1
18	PCN-727A-18	Lower Handle Tube	1	41	PCN-727A-41	Plate	1
19	PCN-727A-19	Screw	2	42	PCN-727A-42	U-Bolt	2
20	PCN-727A-20	Pin	1	43	PCN-727A-43	Saddle Sheft	1
21	PCN-727A-21	Location Pin	1	44	PCN-727A-44	Saddle1	1
22	PCN-727A-22	R-Pin	1	45	PCN-727A-45	R-Pin	3
23	PCN-727A-23	Nut	5	46	PCN-727A-46	Nut	2