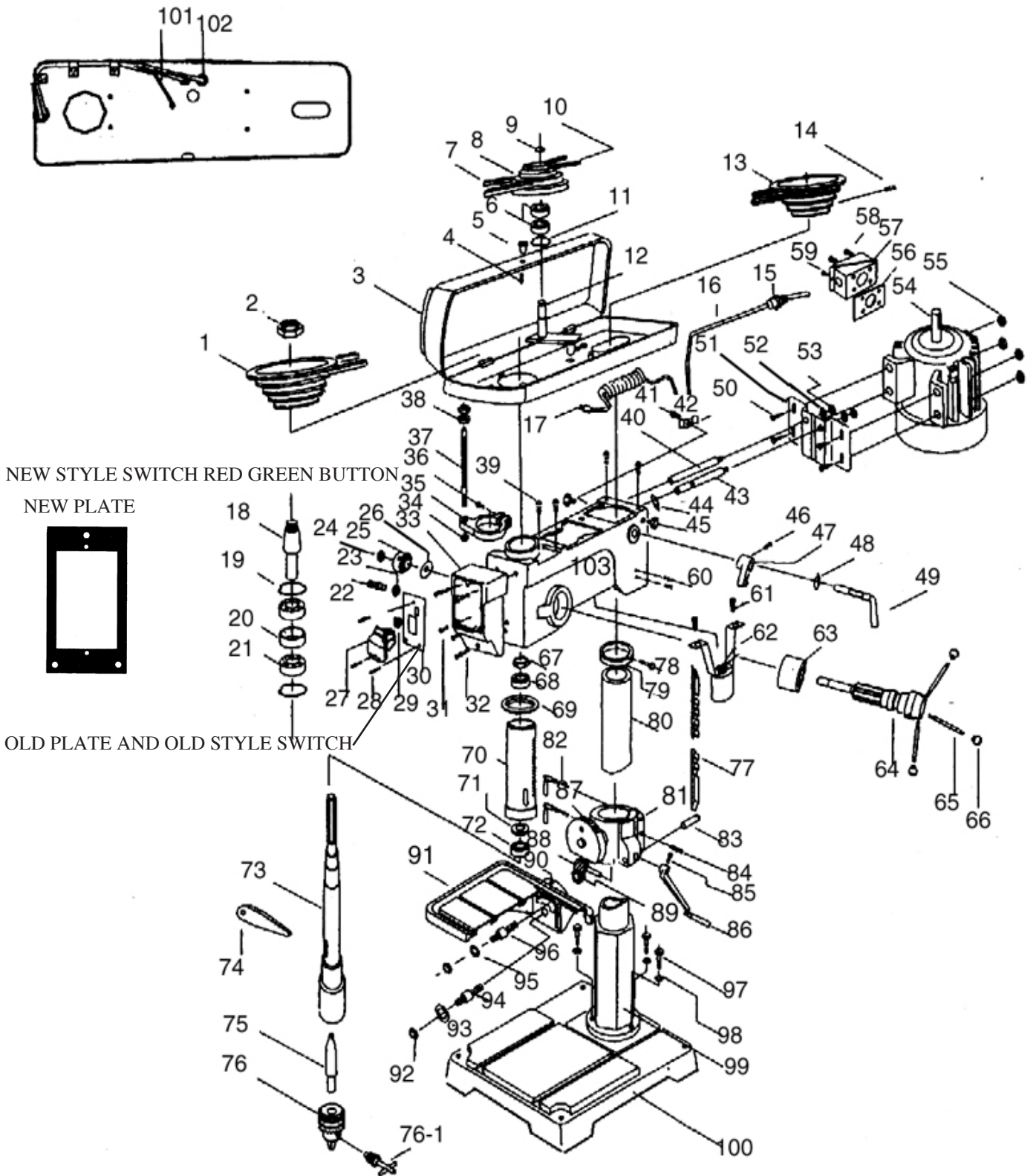


JDP-22F 22" FLOOR DRILL PRESS PRODUCT # 200357



JDP-22F 22" FLOOR DRILL PRESS PRODUCT # 200357

REF	PART NUMBER	DESCRIPTION	REQ	REF	PART NUMBER	DESCRIPTION	REQ
01	PDN-JDP-2201	SPINDLE PULLEY	1	52	PDN-JDP-2252	SPRING WASHER	2
02	PDN-JDP-2202	NUT	1	53	PDN-JDP-2253	HEX. NUT	2
03	PDN-JDP-2203	PULLEY COVER	1	54	PDN-JDP-2254	MOTOR	1
04	PDN-JDP-2204	SCREW	1	55	PDN-JDP-2255	HEX. NUT	4
05	PDN-JDP-2205	KNOB	1	56	PDN-JDP-2256	RUBBER	1
06	PDN-JDP-2206	BEARING	2	57	PDN-JDP-2257	JUNCTION BOX	1
07	PDN-JDP-2207	V-BELT	1	58	PDN-JDP-2258	SCREW	4
08	PDN-JDP-2208	MIDDLE PULLEY	1	59	PDN-JDP-2259	SCREW	1
09	PDN-JDP-2209	RETAINING RING	1	60	PDN-JDP-2260	SET SCREW	2
10	PDN-JDP-2210	V-BELT	1	61	PDN-JDP-2261	PAN SCREW	2
11	PDN-JDP-2211	RETAINING RING	1	62	PDN-JDP-2262	LAMP BRACKET	1
12	PDN-JDP-2212	SHAFT ASSEMBLY	1	63	PDN-JDP-2263	SPACER	1
13	PDN-JDP-2213	MOTOR PULLEY	1	64	PDN-JDP-2264	PINION SHAFT	1
14	PDN-JDP-2214	SCREW	1	65	PDN-JDP-2265	FEEDING HANDLE	3
15	PDN-JDP-2215	STRAIN RELIEF	1	65A	PDN-JDP-2265A	FEEDING HANDLE (235MM)	3
16	PDN-JDP-2216	MOTOR CORD	1	66	PDN-JDP-2266	KNOB	3
17	PDN-JDP-2217	CORD WITH PLUG	1	66A	PDN-JDP-2266A	KNOB	3
18	PDN-JDP-2218	PULLEY INSERT	1	67	PDN-JDP-2267	SPINDLE NUT	1
19	PDN-JDP-2219	RETAINING RING	2	68	PDN-JDP-2268	BEARING	1
20	PDN-JDP-2220	BEARING SPACER	1	69	PDN-JDP-2269	QUILL BASKET	1
21	PDN-JDP-2221	BEARING	2	70	PDN-JDP-2270	QUILL	1
22	PDN-JDP-2222	BOLT	1	71	PDN-JDP-2271	THRUST BEARING	1
23	PDN-JDP-2223	HEX NUT	1	72	PDN-JDP-2272	BEARING	1
24	PDN-JDP-2224	HEX NUT	1	73	PDN-JDP-2273	SPINDLE	1
25	PDN-JDP-2225	SPRING & CAP	1	74	PDN-JDP-2274	DRIFT KEY	1
26	PDN-JDP-2226	WASHER	1	75	PDN-JDP-2275	ARBOR	1
27	PDN-JDP-1338	START/STOP SWITCH	1	76	PDN-JDP-2276	CHUCK	1
27A	PDN-JDP-2227A	START/STOP SWITCH NEW STYLE	1	76-1	PDN-JDP-2276-1	KEY	1
28	PDN-JDP-2228	SCREW	3	77	PDN-JDP-2277	RACK	1
28A	PDN-JDP-2228A	SCREW	3	78	PDN-JDP-2278	SCREW	1
29	PDN-JDP-1337	LIGHT SWITCH ON FRONT PLATE	1	79	PDN-JDP-2279	RACK COLLAR	1
29A	PDN-JDP-2229A	LIGHT SWITCH ON SIDE COVER	1	80	PDN-JDP-2280	QUILL	1
30	PDN-JDP-1725	SWITCH PLATE OLD	1	81	PDN-JDP-2281	TABLE BRACKET	1
30A	PDN-JDP-1725A	SWITCH PLATE NEW	1	82	PDN-JDP-2282	TABLE HANDLE	1
31	PDN-JDP-2231	SCREW	2	83	PDN-JDP-2283	GEAR SHAFT	1
32	PDN-JDP-2232	SCREW	3	84	PDN-JDP-2284	SET SCREW	3
33	PDN-JDP-2233	SWITCH BOX	1	85	PDN-JDP-2285	HEX. HEAD SCREW	1
34	PDN-JDP-2234	NUT	1	86	PDN-JDP-2286	CRANK SLEEVE HANDLE	1
35	PDN-JDP-2235	CLAMPING SEAT DEPTH STOP	1	87	PDN-JDP-2287	TILT SCALE	1
36	PDN-JDP-2236	SCREW	1	88	PDN-JDP-2288	ELEVATING WORM	1
37	PDN-JDP-2237	POST DEPTH SOTP	1	89	PDN-JDP-2289	HELICAL GEAR	1
38	PDN-JDP-2238	LOCK NUT	2	90	PDN-JDP-2290	ZERO SCALE	1
39	PDN-JDP-2239	SCREW	2	91	PDN-JDP-2291	TABLE	1
40	PDN-JDP-2240	MOTOR BRACKET SUPPORT	1	92	PDN-JDP-2292	HEX NUT	2
41	PDN-JDP-2241	SCREW	1	93	PDN-JDP-2293	WASHER	1
42	PDN-JDP-2242	CORD CLAMP	1	94	PDN-JDP-2294	ARM STUD	1
43	PDN-JDP-2243	MOTOR BRACKET SUPPORT	1	95	PDN-JDP-2295	WASHER	1
44	PDN-JDP-2244	RETAINING RING	1	96	PDN-JDP-2296	ARM STUD	1
45	PDN-JDP-2245	WING SCREW	2	97	PDN-JDP-2297	BOLT HEX. HEAD	3
46	PDN-JDP-2246	SCREW	1	98	PDN-JDP-2298	WAHER SPRING	3
47	PDN-JDP-2247	ADJUSTING LEVER	1	99	PDN-JDP-2299	FLANGE	1
48	PDN-JDP-2248	RETAINING RING	1	100	PDN-JDP-22100	BASE	1
49	PDN-JDP-2249	LEVER SHAFT	1	101	PDN-JDP-22101	CORD FOR CLAMP	1
50	PDN-JDP-2250	HEX. HEAD SCREW	4	102	PDN-JDP-22102	CORD PROTECT	1
51	PDN-JDP-2251	MOTOR PLATE	1	103	PDN-JDP-22103	HEAD	1