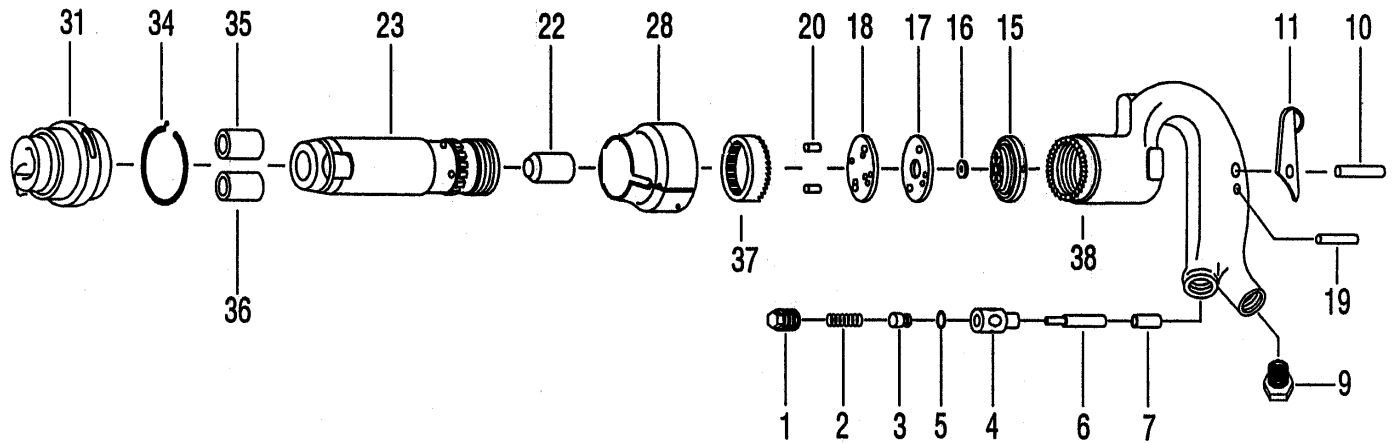


# CH3,CH4 CHIPPING HAMMERS PRODUCT # 404323,4,8,9



REF	PART NUMBER	DESCRIPTION	REQ	REF	PART NUMBER	DESCRIPTION	REQ
1	PUT-CH3-1	Plug-Throttle Valve(1/2" PT)	1	18	PUT-CH3-18	Lid-Lower Valve Case	1
2	PUT-CH3-2	Spring-Throttle Valve	1	19	PUT-CH3-19	Pin Stop(5*28)	1
3	PUT-CH3-3	Valve-Throttle	1	20	PUT-CH3-20	Pin-Bowel(7.8*22)	2
4	PUT-CH3-4	Bushing-Throttle Valve	1	22	PUT-CH3-22	Piston (3")	1
5	PUT-CH3-5	O-ring ( 6*2)	1	22	PUT-CH4-22	Piston (4")	1
6	PUT-CH3-6	Pin-Push	1	23	PUT-CH3-23	Cylinder (3")	1
7	PUT-CH3-7	bushing-Pin Push	1	23	PUT-CH4-23	Cylidner (4")	1
9	PUT-CH3-9	Bushing-Peremanent	1	28	PUT-CH3-28	Shield-lock	1
10	PUT-CH3-10	Pin-Throttle Lever ( 6*20)	1	31	PUT-CH3-31	Sleeve-Retianer	1
11	PUT-CH3-11	Lever-Throttle	1	34	PUT-CH3-34	Spring-Lockcoil	1
15	PUT-CH3-15	Lid-Upper Valve Case	1	35	PUT-CH3-35	Bushing-Cylinder (R)	1
16	PUT-CH3-16	Valve-Throttle	1	36	PUT-CH3-36	Bushing-Cylinder (H)	1
17	PUT-CH3-17	Case-Valve	1	37	PUT-CH3-37	Lock	1
18	PUT-CH3-18	Lid-Lower Valve Case	1	38	PUT-CH3-38	Handle	1