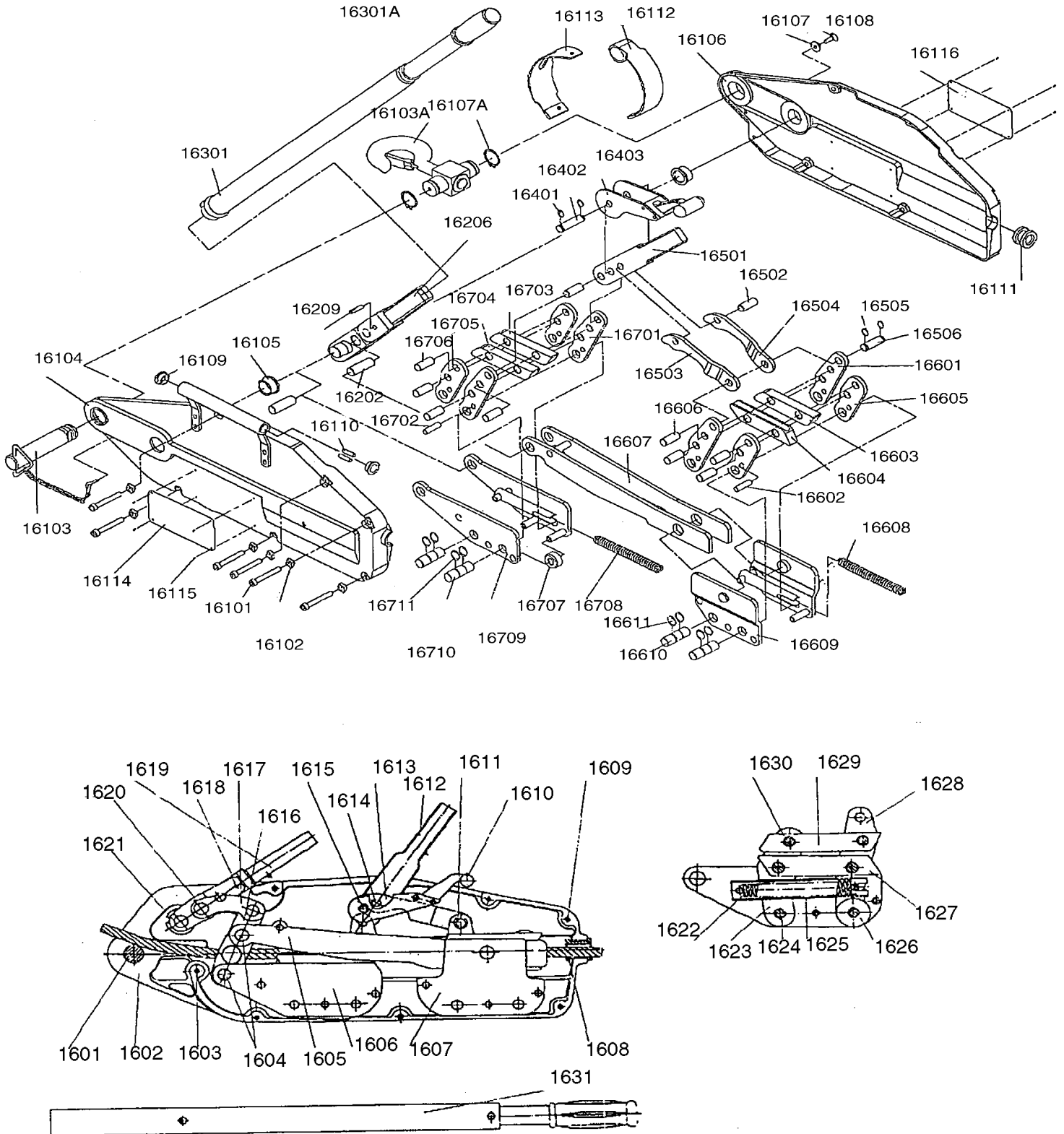


JGP150A | 1-1/2 T GRIP PULLER PARTS BREAKDOWN | PROD. NO. 111137



JGP150A | 1-1/2 T GRIP PULLER PARTS LIST | PROD. NO. 111137

| REF. | PART NUMBER | DESCRIPTION | REQ. | REF. | PART NUMBER | DESCRIPTION | REQ. |
|-------|-----------------|------------------------------------|------|--------|------------------|---------------------------------------|------|
| 1601 | PWC-SGP150-1601 | SGP150 ANCHOR PIN | 1 | 16116 | PWC-SGP15-16116 | SGP150A INSTRUCTION PLATE | 1 |
| 1602 | PWC-SGP150-1602 | SGP150 CASE LEFT/RIGHT ALUMINUM | 2 | 16202 | PWC-SGP150-1604 | SGP150 CRANK AXLE | 1 |
| 1604 | PWC-SGP150-1604 | SGP150 CRANK AXLE | 1 | 16206 | PWC-SGP150-1616 | SGP150 SHAKE ROD USE 1619 | 1 |
| 1605 | PWC-SGP150-1605 | SGP150 CONNECTING ROD | 2 | 16209 | PWC-SGP150-18 | SGP150A SHEAR PIN | 1 |
| 1606 | PWC-SGP150-1606 | SGP150 FRONT JAW BLOCK | 1 | 16301 | PWC-SGP150-1631 | SGP150 TELESCOPIC HANDLE | 1 |
| 1607 | PWC-SGP150-1607 | SGP150 REAR JAW BLOCK | 1 | 16401 | PWC-SGP15-16401 | SGP150A SNAP RING | 2 |
| 1608 | PWC-SGP150-1608 | SGP150 ROPE GUIDE | 1 | 16402 | PWC-SGP150-1615 | SGP150 RELEASE HANDLE PIN | 1 |
| 1609 | PWC-SGP150-1609 | SGP150 CASE BOLT | 6 | 16403 | PWC-SGP150-1610 | SGP150 RELEASE HANDLE | 1 |
| 1610 | PWC-SGP150-1610 | SGP150 RELEASE HANDLE | 1 | 16501 | PWC-SGP150-1612 | SGP150 REVERSE LEVER | 1 |
| 1611 | PWC-SGP150-1611 | SGP150 RELEASE CONNECTING ROD AXLE | 1 | 16502 | PWC-SGP150-1614 | SGP150 CONNECTING AXLE | 1 |
| 1612 | PWC-SGP150-1612 | SGP150 REVERSE LEVER | 1 | 16503 | PWC-SGP150-1613 | SGP150 CONNECTING ROD | 1 |
| 1613 | PWC-SGP150-1613 | SGP150 CONNECTING ROD | 2 | 16504 | PWC-SGP150-1613 | SGP150 CONNECTING ROD | 1 |
| 1614 | PWC-SGP150-1614 | SGP150 CONNECTING AXLE | 1 | 16505 | PWC-SPC15-16505 | SGP150A SNAP RING | 2 |
| 1615 | PWC-SGP150-1615 | SGP150 RELEASE HANDLE PIN | 1 | 16506 | PWC-SGP150-1611 | SGP150 RELEASE CONNECTING ROD AXLE | 1 |
| 1616 | PWC-SGP150-1616 | SGP150 SHAKE ROD USE 1619 | 1 | 16601 | PWC-SGP15-16601 | SGP150A LONG CLAMP PLATE | 2 |
| 1618 | PWC-SGP150-18 | SGP150 SHEAR PIN | 1 | 16602 | PWC-SGP15-16602 | SGP150A CLAMP PLATE PIN | 1 |
| 1619 | PWC-SGP150-1619 | SGP150 OPERATING LEVER C/W 1616 | 1 | 16603 | PWC-SGP15-16603 | SGP150A UPPER JAW | 1 |
| 1622 | PWC-SGP150-1622 | SGP150 SPRING | 2 | 16604 | PWC-SGP15-16604 | SGP150A LOWER JAW | 1 |
| 1623 | PWC-SGP150-1623 | SGP150 CLAMP PLATE | 1 | 16605 | PWC-SGP15-16605 | SGP150A CLAMP PLATE | 2 |
| 1624 | PWC-SGP150-1624 | SGP150 CLAMP PLATE AXLE | 1 | 16606 | PWC-SGP15-16606 | SGP150A JAW AXLE | 4 |
| 1625 | PWC-SPC150-1625 | SGP150 SPRING HOUSING | 2 | 16607 | PWC-SGP150-1605 | SGP150 CONNECTING ROD | 2 |
| 1626 | PWC-SGP150-1626 | SGP150 SUPPORT WHEEL | 1 | 16608 | PWC-SGP15-16608 | SGP150A SPRING | 1 |
| 1627 | PWC-SGP150-1627 | SGP150 LOWER JAW | 2 | 16609 | PWC-SGP150-1607 | SGP150 REAR JAW BLOCK | 1 |
| 1628 | PWC-SGP150-1628 | SGP150 LONG CLAMP PLATE | 2 | 16610 | PWC-SGP15-16610 | SGP150A CLAMP PLATE AXLE | 2 |
| 1629 | PWC-SGP150-1629 | SGP150 UPPER JAW | 2 | 16611 | PWC-SGP15-16611 | SGP150A SNAP RING | 4 |
| 1630 | PWC-SGP150-1630 | SGP150 JAW AXLE | 4 | 16701 | PWC-SGP150-1628 | SGP150 LONG CLAMP PLATE | 2 |
| 1631 | PWC-SGP150-1631 | SGP150 TELESCOPIC HANDLE | 1 | 16702 | PWC-SGP15-16702 | SGP150A CLAMP PLATE PIN | 1 |
| 16101 | PWC-SGP150-1609 | SGP150 CASE BOLT | 6 | 16703 | PWC-SGP150-1629 | SGP150 UPPER JAW | 2 |
| 16102 | PWC-SGP15-16102 | SGP150A CASE NUT | 6 | 16704 | PWC-SGP150-1627 | SGP150 LOWER JAW | 2 |
| 16103 | PWC-SGP150-1601 | SGP150 ANCHOR PIN | 1 | 16705 | PWC-SGP150-1623 | SGP150 CLAMP PLATE | 1 |
| 16104 | PWC-SGP15-16104 | SGP150A CASE LEFT METAL | 1 | 16706 | PWC-SGP150-1630 | SGP150 JAW AXLE | 4 |
| 16105 | PWC-SGP15-16105 | SGP150A BUSH FOR SHAKE ROD | 2 | 16707 | PWC-SPC150-1625 | SGP150 SPRING HOUSING | 2 |
| 16106 | PWC-SGP15-16106 | SGP150A CASE RIGHT METAL | 1 | 16708 | PWC-SGP150-1622 | SGP150 SPRING | 2 |
| 16107 | PWC-SGP15-16107 | SGP150A WASHER | 1 | 16709 | PWC-SGP150-1606 | SGP150 FRONT JAW BLOCK | 1 |
| 16109 | PWC-SGP15-16109 | SGP150A PLASTIC PLUG | 1 | 16710 | PWC-SGP15-16710 | SGP150A CLAMP PLATE AXLE | 2 |
| 16111 | PWC-SGP150-1608 | SGP150 ROPE GUIDE | 1 | 16711 | PWC-SGP15-16711 | SGP150A SNAP RING | 4 |
| 16112 | PWC-SGP15-16112 | SPG150A UPPER DUST SHIELD | 1 | 16103A | PWC-SGP15-16103 | SGP150 TOP HOOK | 1 |
| 16113 | PWC-SGP15-16113 | SPG150A LOWER DUST SHIELD | 1 | 16103B | PWC-SGP150A-SAF | SGP150A SWIVEL HOOK SAFETY LATCH KIT | 1 |
| 16114 | PWC-SGP15-16114 | SGP150A NAME PLATE | 1 | 16107A | PWC-SGP15-16107A | SGP150A SNAP RING | 2 |
| 16115 | PWC-SGP15-16115 | SGP150A RIVET | 8 | 16301A | PWC-SGP15-16301A | SGP150A TELESCOPIC HANDLE RUBBER GRIP | 1 |
| | | | | 1634 | PWC-SGP150-1634 | TOP HOOK | 1 |