

## Installation / Operating / Maintenance Instructions Filter Regulator Combination - Lubricator, Modular

### Prod. No. 408801, 408802, 408804 Specifications

This modular FRCLM unit consists of a filter regulator combination unit and lubricator, assembled using a piping adaptor (1), wall mounting bracket (7) etc.

For details of (a) specifications, (b) installation, (c) operating and (d) maintenance, refer to the instruction sheets of the individual items.

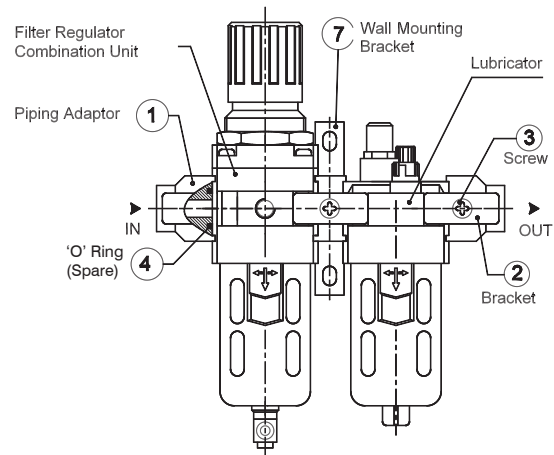


fig. 1

| Model No | Filter Regulator Combination Model No | Lubricator Model No | Piping Adaptor assembly ( 1 ) | Wall Mounting Bracket assembly ( 7 ) |
|----------|---------------------------------------|---------------------|-------------------------------|--------------------------------------|
| AFRLCM14 | AFRM14                                | ALM14               | A2P0...                       | A2W01                                |
| AFRLCI38 | AFRI38                                | ALI38               | A2P0...                       | A2W02                                |
| AFRLCS12 | AFRS12                                | ALS12               | A2P0...                       | A2W03                                |

### Important

Since this equipment is used in compressed air line, proper precautions are to be taken for safety.

### Installation of Modular Unit

1. Dismantle the Piping Adaptor ( 1 ) from the assembly.
2. Assemble the Piping Adaptor on to the rigid pipeline OR to the threaded fitting ( as the case may be ) using correct wrench.
3. Reassemble the Modular units by stacking and tightening the screws.

#### Caution :

When the pipes or fittings are assembled on the modular unit, without removing the piping adaptor from the assembly, ensure the following:

- (a). Hold the Piping adaptor ( 1 ) using correct size wrench and tighten the pipes or fittings at both ends.
- (b). Ensure that the tightening load is NOT transmitted to the FRL assembly otherwise the guide ribs provided in the Spacer and Piping Adaptors may be damaged.

### Removal of the individual unit from the line

1. Remove the Screws ( 3 ) and Brackets ( 2 ) adjacent to the unit to be removed.
2. Pull out the unit by sliding away from the line.

### Reassembly of the unit

1. Apply NLGI Grade 2 grease on the surface of the 'O' ring (4) and on the sliding faces.
2. Reassemble the unit by sliding between the guide ribs.
3. Tighten the Brackets ( 2 ) using the Screws ( 3 ).

### How to order spare parts:

Mention the spare parts and model numbers as given in the tables.

Example: 'O' ring 650011 for AFRLCM14

Subject to change

## Assembly / Spare Parts List

### Filter Regulator Combination - Lubricator, Modular

---

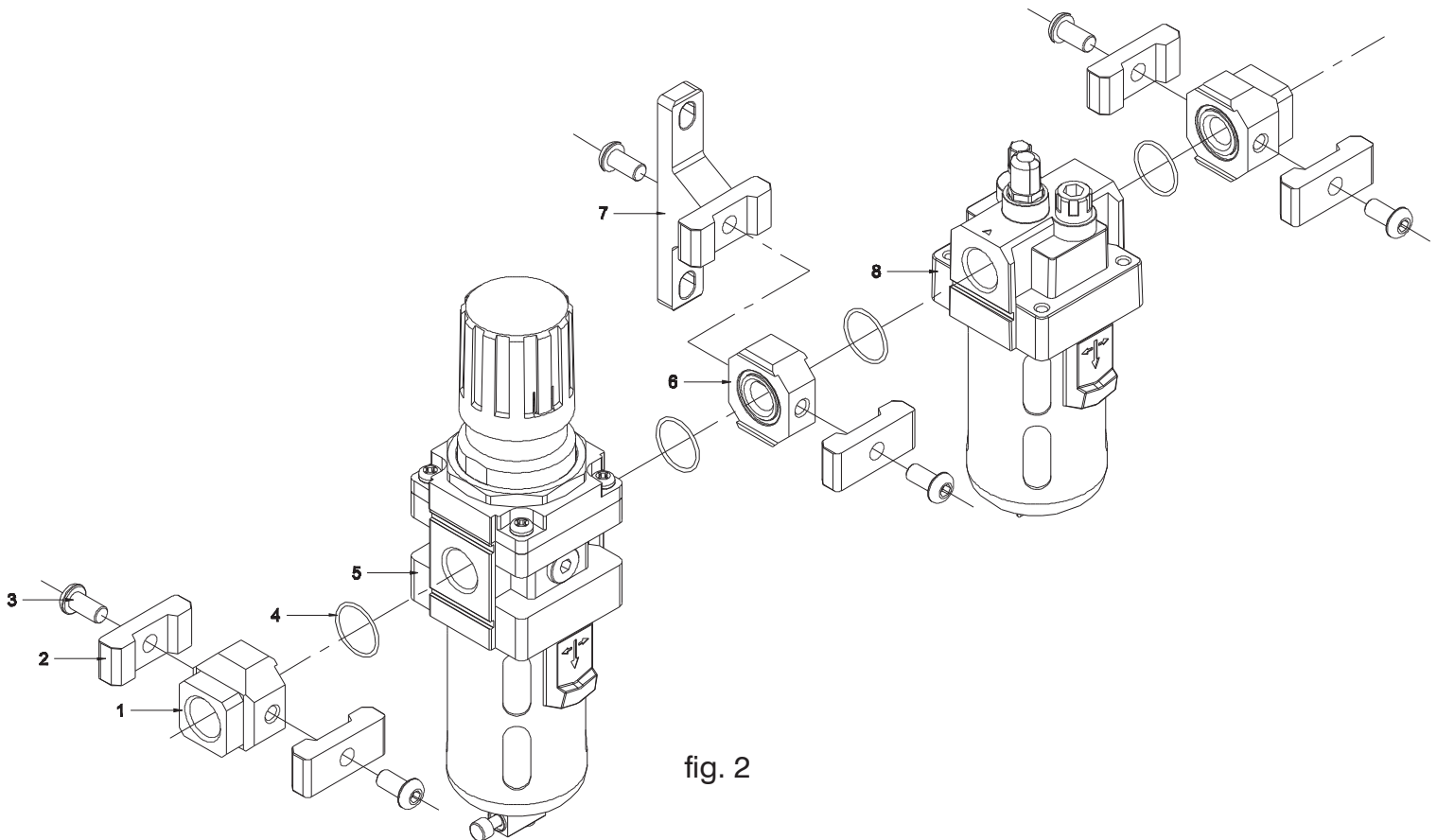


fig. 2

| Ref. No. | No. off. | Part Name                 | Ordering No. for |          |          |
|----------|----------|---------------------------|------------------|----------|----------|
|          |          |                           | AFRLCM14         | AFRLCI38 | AFRLCS12 |
| 1        | 2        | Piping Adaptor            | -                | -        | -        |
| 2        | 5        | Bracket                   | -                | -        | -        |
| 3        | 6        | Philip Head Screw         | -                | -        | -        |
| 4        | 4        | 'O' Ring                  | 650011           | 650013   | 650014   |
| 5        | 1        | Filter Regulator Assembly | -                | -        | -        |
| 6        | 1        | Spacer                    | -                | -        | -        |
| 7        | 1        | Wall Mounting Bracket     | -                | -        | -        |
| 8        | 1        | Lubricator Assembly       | -                | -        | -        |

Pour l'information en français, visitez notre site Web : [www.jetequipment.com/fr/](http://www.jetequipment.com/fr/)