

FLARE NUT CROWFOOT SETS - 6 PT



- 6 point style distributes force over a greater area, protecting softer brass and aluminum fittings and providing greater user protection against slippage
- Open slot allows wrench to slip over hoses and lines to reach fasteners
- Chrome vanadium steel for professional use
- Excellent for use on hydraulic, brake, air conditioning, and fuel lines
- Drive with any 3/8" ratchet, extension, or other drive tool
- Includes socket rail for organization

Flare Nut Crowfoot Wrench Set - SAE - 7 pc



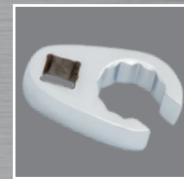
PROD. NO.	MOD. NO.	SIZES (INCHES)
719112	CFW3807-6	3/8, 7/16, 1/2, 9/16, 5/8, 11/16, 3/4

Flare Nut Crowfoot Wrench Set - Metric - 10 pc



PROD. NO.	MOD. NO.	SIZES (mm)
719122	CFW3810-6M	10, 11, 12, 13, 14, 15, 16, 17, 18, 19

FLARE NUT CROWFOOT SETS - 12 PT



- 12 point style provides double the index points, providing easier turning of fasteners in restricted spaces
- Can be used on 4 point, 6 point, and 12 point fasteners
- Open slot allows wrench to slip over hoses and lines to reach fasteners
- Chrome vanadium steel for professional use
- Excellent for use on hydraulic, brake, air conditioning, and fuel lines
- Drive with any 1/2" ratchet, extension, or other drive tool
- Includes socket rail for organization

Flare Nut Crowfoot Wrench Set - SAE - 7 pc



PROD. NO.	MOD. NO.	SIZES (INCHES)
719113	CFW1207-12	13/16, 7/8, 15/16, 1, 1-1/16, 1-1/8, 1-1/4

Flare Nut Crowfoot Wrench Set - Metric - 10 pc



PROD. NO.	MOD. NO.	SIZES (mm)
719123	CFW1210-12M	20, 21, 22, 23, 24, 25, 26, 27, 30, 32

*** New Open Stock Wrenches available. See next page...**