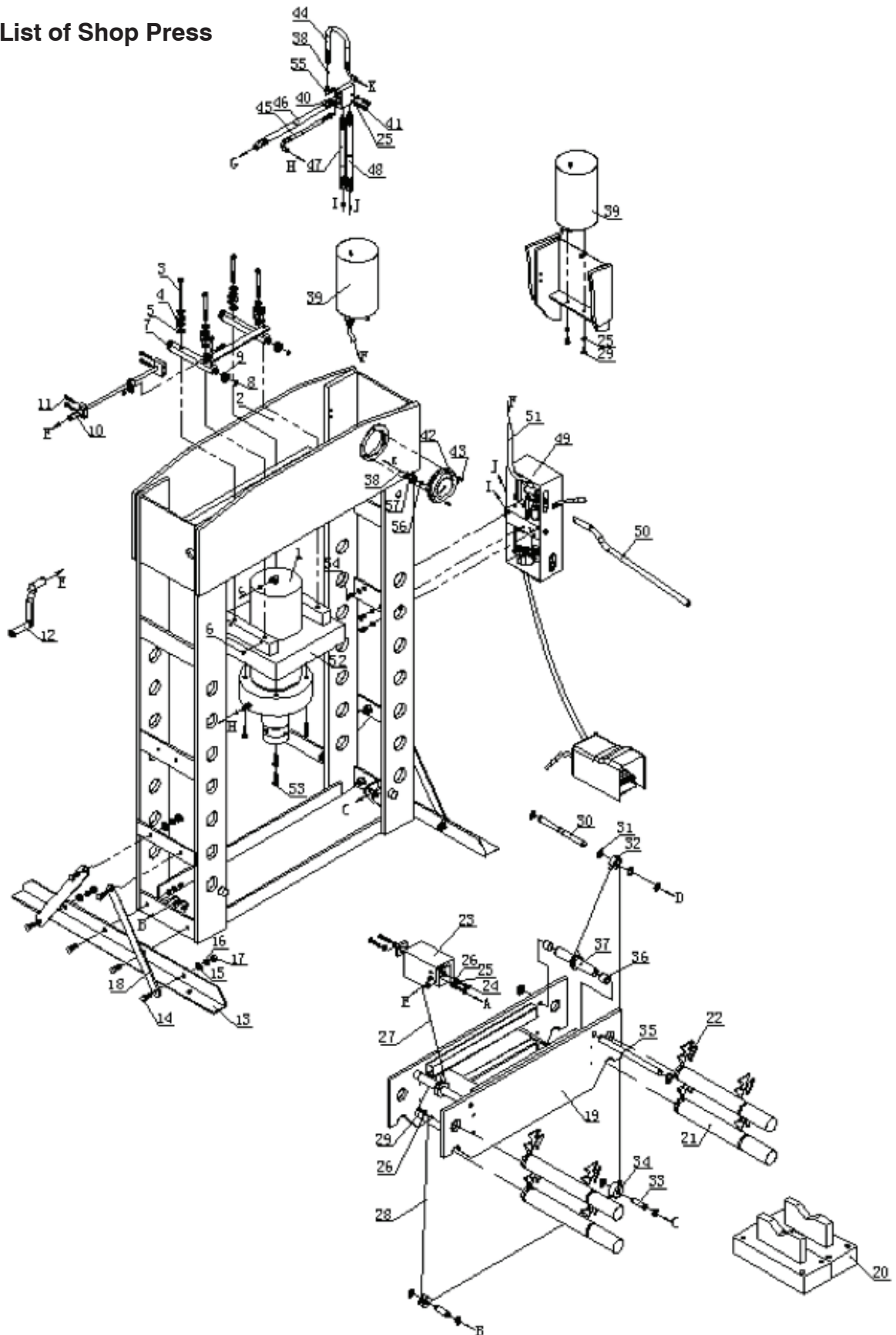


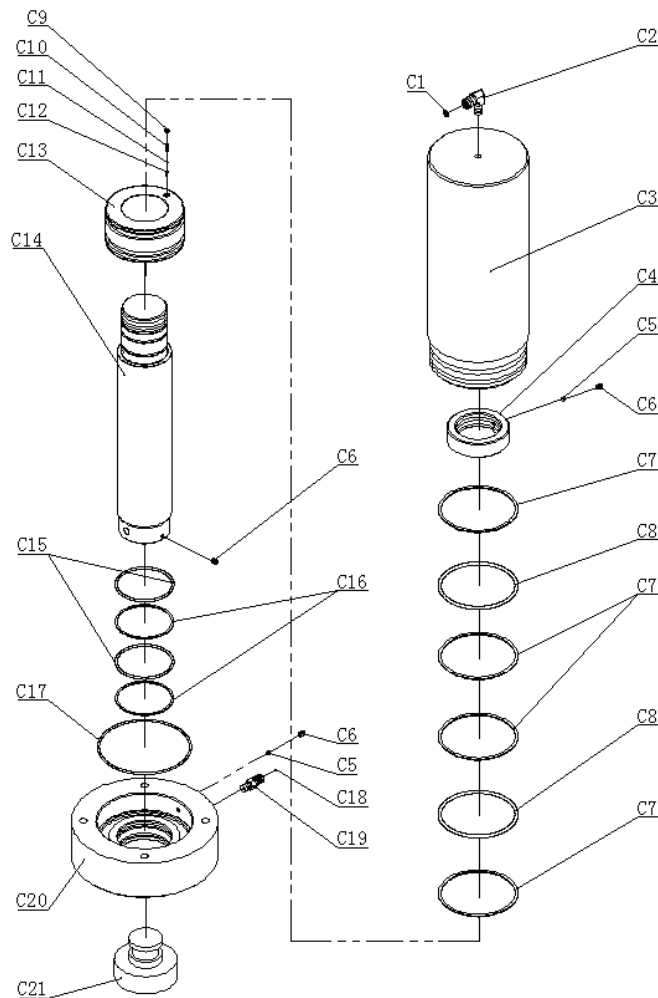
### 3. Parts List of Shop Press

No.	Description	Qty.	No.	Description	Qty.
1	Ram Assembly	1	30	Roller Pin	1
2	Body Frame	1	31	Circlip $\phi 20$	8
3	Hex Bolt M12*130	4	32	Roller With Cover III	1
4	Spring Cove	8	33	Roller Pin 2	2
5	Spring	4	34	Roller With Cover	2
6	Hexagon socket set screw M8*10	4	35	Lifting Bar	2
7	Steel Tube II	2	36	Tube 2	4
8	Circlip $\phi 17$	4	37	Bushing	1
9	Ball Bearing GB/T276-6203	4	38	O-ring 9*1.9	2
10	Ram Moving Equipment	1	39	Oil Tank	1
11	Hexagon Screw M8*45	4	40	Adapter	1
12	Handle Part	1	41	Hex Screw M10*40	2
13	Base	2	42	Pressure Gauge	1
14	Hex Bolt M12*30	12	43	Screw M5*8	3
15	Washer GB/T95- $\phi 12$	12	44	Oil Hose 1	1
16	Spring Washer GB/T93- $\phi 12$	15	45	Oil Hose (Down)	1
17	Hex Nut M12	12	46	Oil Hose 3	1
18	Support	4	47	Oil Hose 1	1
19	Working Bed	1	48	Oil Hose 2	1
20	Heel Block	2	49	Pump Assembly	1
21	Pin	4	50	Handle Tube	1
22	Circlip	8	51	Oil Hose	1
23	Working Bed Moving Equipment	1	52	Under Plate	1
24	Hex Screw M10*30	4	53	Hexagon Screw M12*45	4
25	Spring Washer $\phi 10$	8	54	Hex Bolt M12*25	3
26	Washer $\phi 10$	5	55	Fitting	1
27	Cable 1.6M	1	56	Nylon Ring	1
28	Cable 4.3M	1	57	Connecting Nut	1
29	Hex Screw M10*20	3			

### 3. Parts List of Shop Press

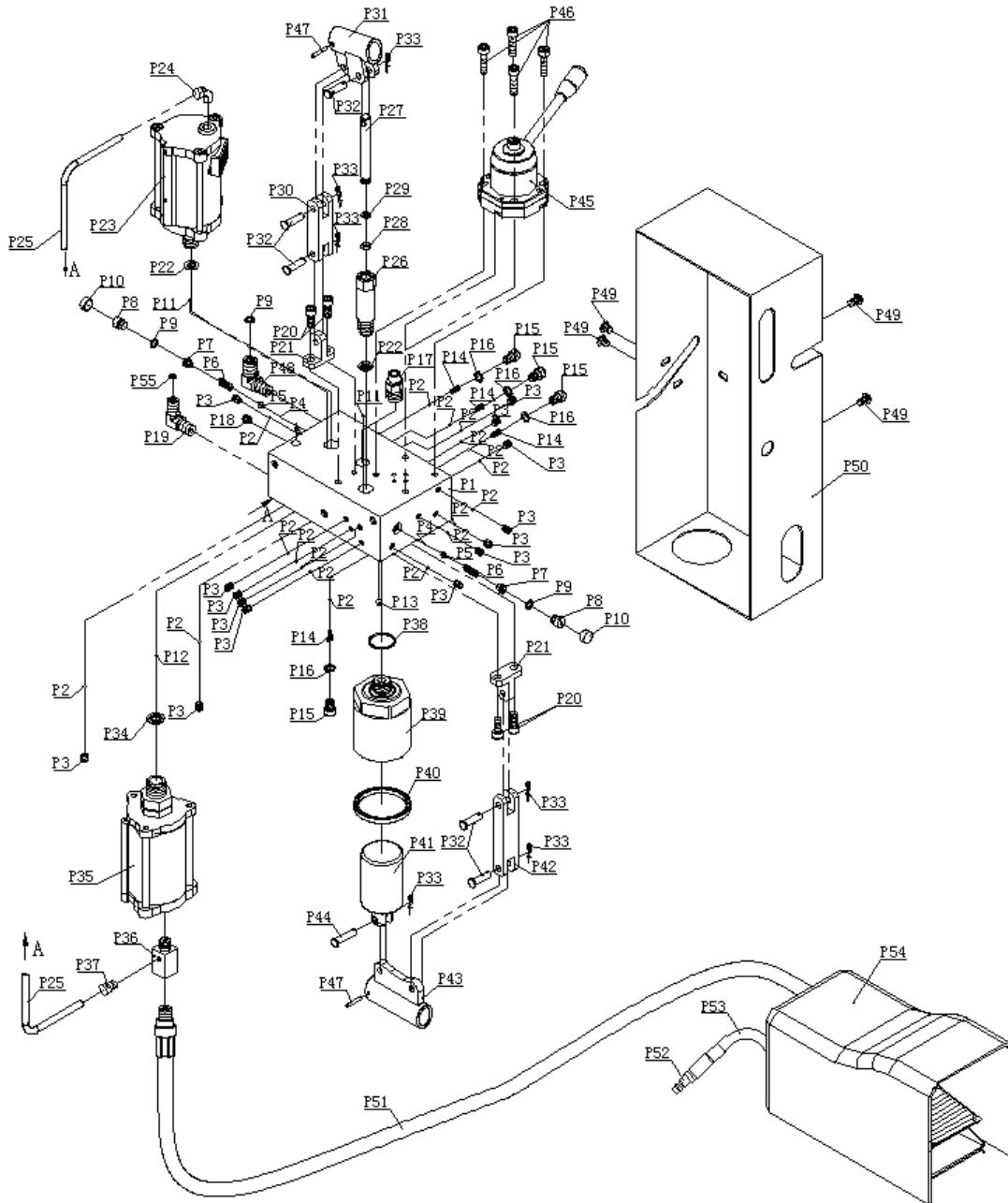


## 4. Parts List of Ram



No.	Description	Qty.	No.	Description	Qty.
C1	O-ring 8*2	1	C12	Valve Rod	1
C2	Fitting	1	C13	Piston	1
C3	Cylinder	1	C14	Piston Rod	1
C4	Nut	1	C15	O-ring GB3452.1-96*4	2
C5	Nylon Block	2	C16	PTFE Washer	2
C6	Hexagon Socket Set Screw M8*10	3	C17	O-ring GB3452.1-158.34*3.53	1
C7	PTFE Washer	4	C18	O-ring GB1235-9*1.9	1
C8	O-ring GB3452.1-129.6*5.7	2	C19	Connector I	1
C9	Screw	1	C20	Ring for Ram	1
C10	Spring	1	C21	Serrated Saddle	1
C11	Steel Ballφ4.7630				

## 5. Parts List of Pump



### Pump Features:

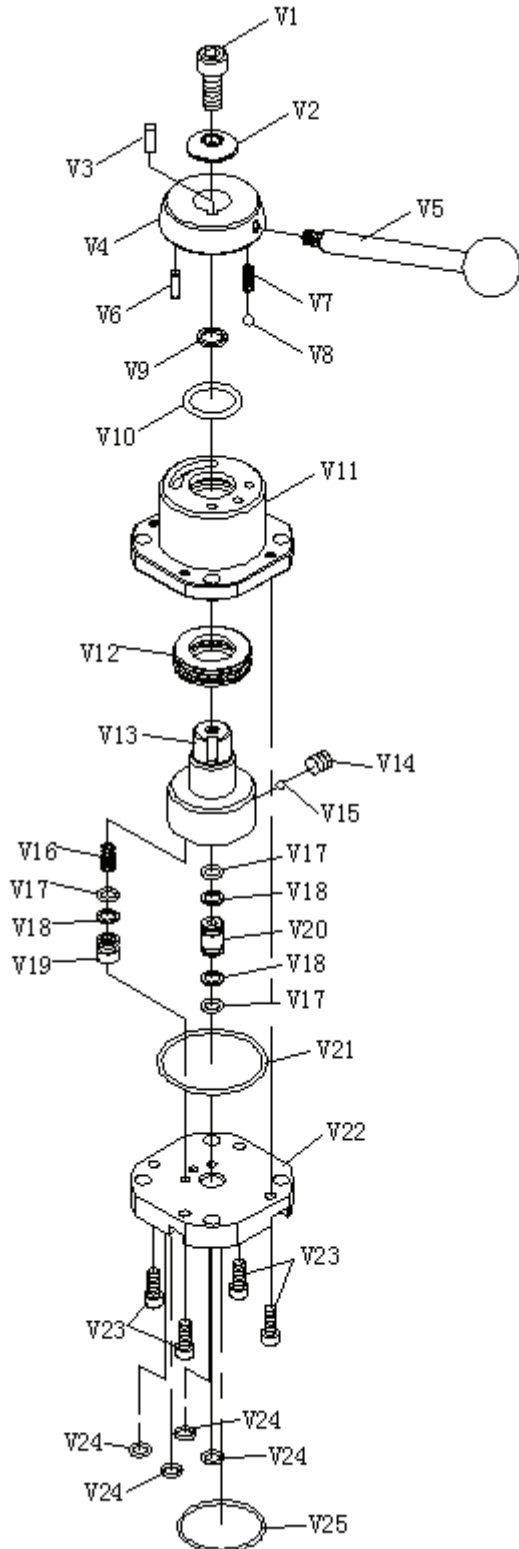
The pump assembly is composed of four pumps, two for high pressure (one is manual and the other is air) which are located on the top of the pump assembly; the other two for low pressure (one is manual and the other is air) which are located in the lower position; and there is one selector valve on the top of the pump assembly.

The two pumps for low pressure are used for quick extension of the piston rod without pressure; and the two pumps for high pressure are working when under pressure. The selector valve is used to control the piston rod's returning or extension.

## 5. Parts List of Pump

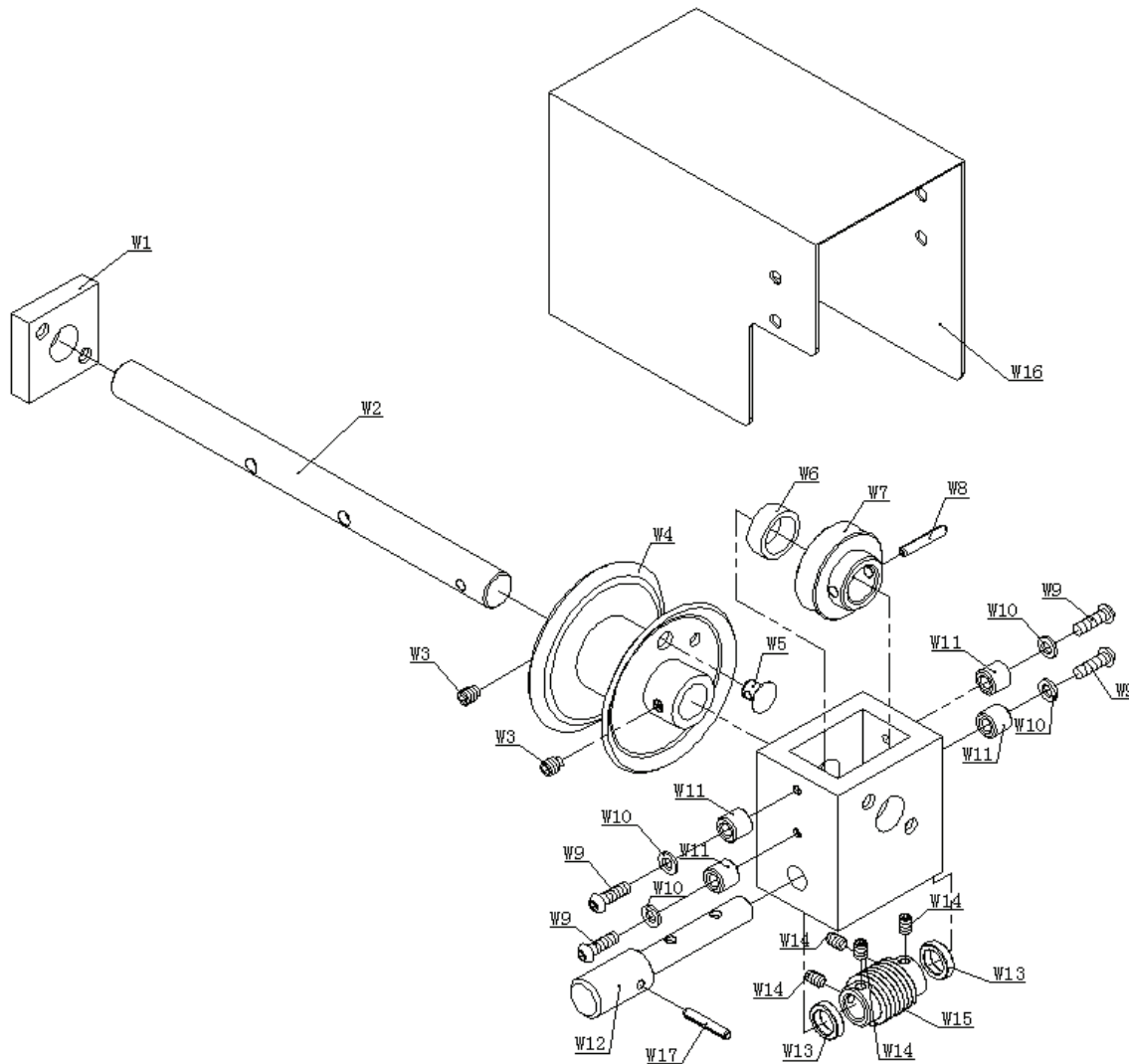
No.	Description	Qty.	No.	Description	Qty.
P1	Pump	1	P29	Circlip	1
P2	Steel Ballφ6.0000	18	P30	Connecting Bar	1
P3	Hexagon Socket Set Screw M8*10	14	P31	Handle Socket	1
P4	Steel Ball φ3.0000	2	P32	Pin8*30	5
P5	Steel Ball Base	2	P33	R-Pin	6
P6	Spring	2	P34	Copper Washer	1
P7	Screw	2	P35	Air Pump	1
P8	Plug Screw	2	P36	Branch Joint	1
P9	O-ring	2	P37	Connector	1
P10	Cover	2	P38	O-Ring 30*2	1
P11	Steel Ballφ5.0000	2	P39	Big Pump Core Base	1
P12	Steel Ballφ7.1438	1	P40	U-Ring NOK53*63*6	1
P13	Steel Ballφ8.0000	1	P41	Big Pump Core	1
P14	Spring	4	P42	Big Connecting Bar	1
P15	Plug Screw	4	P43	Handle Socket For Low Pressure	1
P16	Copper Washer TT-245	4	P44	Pin 8*35	1
P17	NPT1/2" Connector	1	P45	Manual selector valve	1
P18	NPT1/4" Plug	1	P46	Hexagon Screw M8*35	4
P19	Fitting	1	P47	Spring Pinφ4*26	2
P20	Hexagon Bolt M8*20	4	P48	Fitting	1
P21	Connecting Rod Base	2	P49	Flat-head Screw GB70.2-M8*10	4
P22	Copper Washer TT-244	2	P50	Pump Cover	1
P23	Air Pump	1	P51	Air Hose 1	1
P24	NPT1/4"-8 Connector	1	P52	Air Hose Joint	1
P25	PU Tube 8*6	1	P53	Air Hose 2	1
P26	Pump Core Base	1	P54	Air Valve	1
P27	Pump Core	1	P55	O-Ring 9*1.9	1
P28	O-ring 6.5*3	1			

## 6. Parts List of Selector Valve



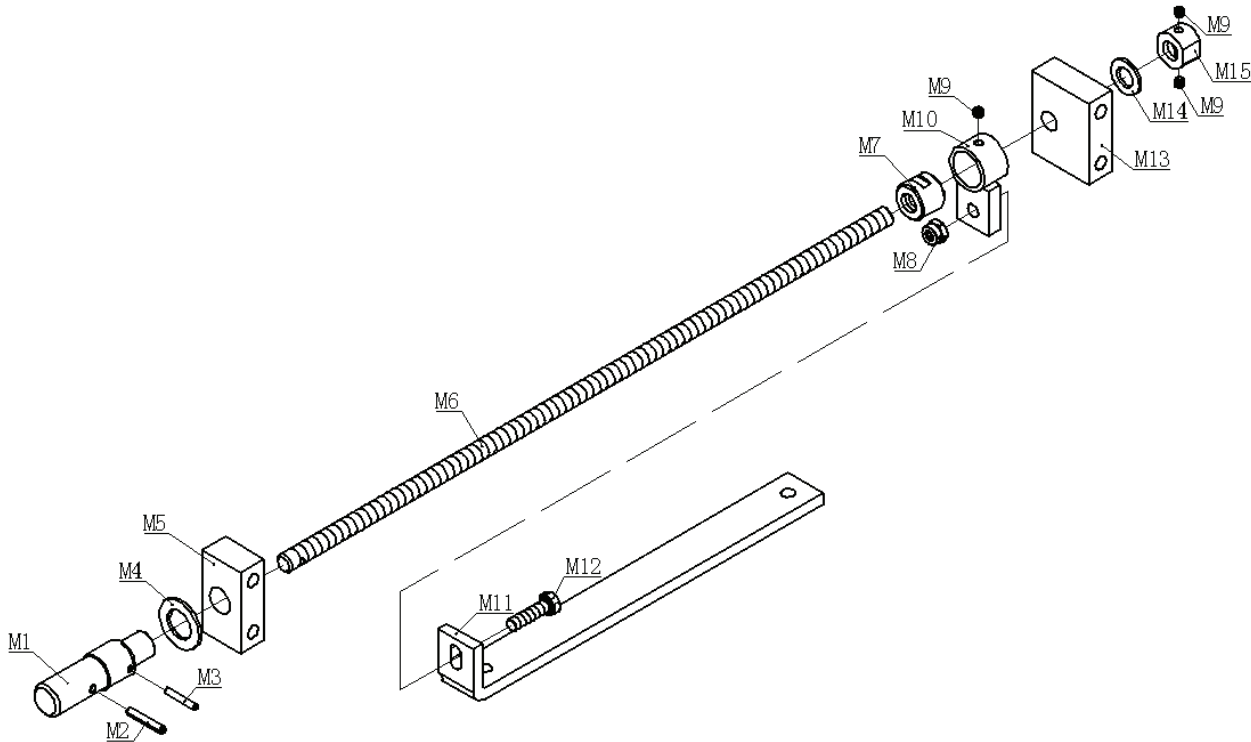
No.	Description	Qty.
V1	Hexagon Screw	1
V2	T Washer	1
V3	Key	1
V4	Moving Cover	1
V5	Handle	1
V6	Pin	1
V7	Spring	1
V8	Steel Ball	1
V9	Copper Washer	1
V10	O-Ring	1
V11	Valve Jacket	1
V12	Ball Bearing	1
V13	Valve Plug	1
V14	Hexagon Socket Set Screw	1
V15	Steel Ball	1
V16	Spring	1
V17	O-Ring	3
V18	PTFE Washer	3
V19	Slide Valve	1
V20	Connector	1
V21	O-Ring	1
V22	Valve Plate	1
V23	Hexagon Screw	4
V24	O-Ring	4
V25	O-Ring	1

## 7. Parts List of Bed Winch Mechanism



No.	Description	Qty.	No.	Description	Qty.
W1	Support Plate	1	W10	Washer $\phi 10$	4
W2	Worm Shaft	1	W11	Washer	4
W3	Hexagon Screw M8*10	2	W12	Worm Shaft	1
W4	Winch	1	W13	Worm Washer	2
W5	Rivet	1	W14	Hexagon Socket Set Screw M6*10	4
W6	Worm Pad	1	W15	Worm	1
W7	Worm	1	W16	Winch Cover	1
W8	Spring Pin $\phi 6*30$	1	W17	Spring Pin $\phi 5*30$	1
W9	Hexagon Screw 6*20	4			

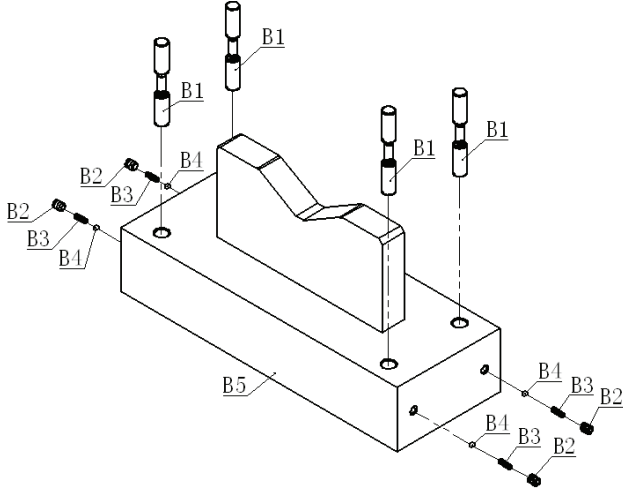
## 8. Parts List of Ram Adjuster



No.	Description	Qty.	No.	Description	Qty.
M1	Worm Connecting Shaft	1	M9	Hexagon Socket Set Screw M6*5	3
M2	Spring Pin $\phi$ 5*30	1	M10	Nut Cover	1
M3	Spring Pin $\phi$ 4*25	1	M11	Connecting Bar	1
M4	Washer $\phi$ 18	1	M12	Hex Bolt M8*30	1
M5	Support Base 2	1	M13	Screw Base 1	1
M6	Screw	1	M14	Washer $\phi$ 12	1
M7	Nut	1	M15	Locking Nut	1
M8	Damping Nut M8	1			



## 9. Parts List of Heel Blocks



No.	Description	Qty.
B1	Limit Screw	4
B2	Hexagon Screw M8*10	4
B3	Spring	4
B4	Steel Ball $\phi$ 4.763	4
B5	Heel Block	1

## 10. Unpacking the Plywood Case

### 10.1

To avoid any damage to the machine or personal injury, remove the small parts packed in case first.

### 10.2

Remove the polybag covering the press.

### 10.3

Use a fork lift to take the press out of case.

### 10.4

Double check parts to ensure they are all there. The parts should include press body frame, pump, base, support, hardware kits, etc.  
(For details refer to the following sheet)

