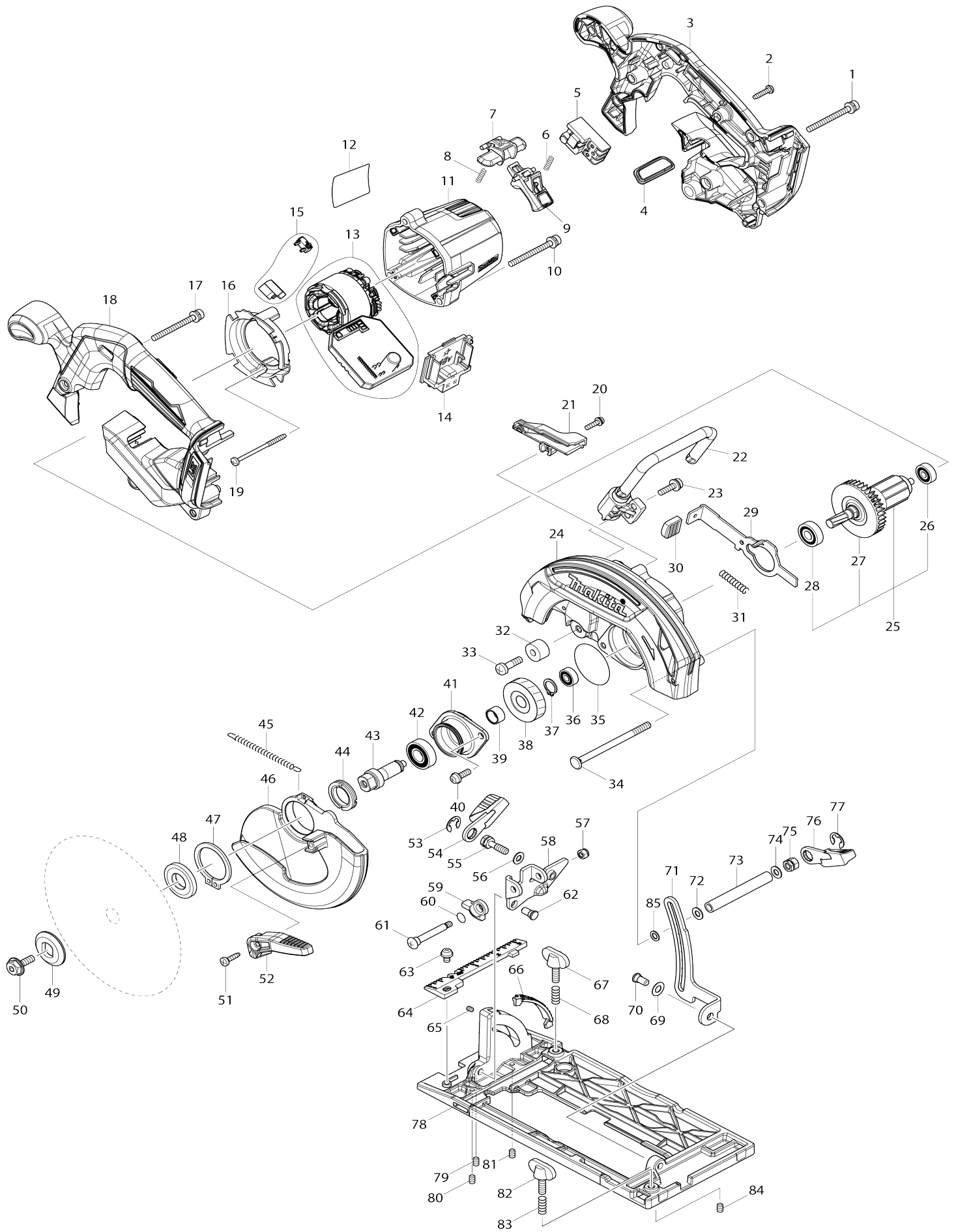


# Model No.DHS680 165MM CORDLESS CIRCULAR SAW



Model No.DHS680 165MM CORDLESS CIRCULAR SAW

Item No.	Parts No.	Description	Interchangeability	Q'ty	New/Old	Note1	Note2
001	911263-2	Pan head screw M5X40 WR		1			
002	265995-6	Binding head tapping screw 4X18		7			
003	183A15-9	Handle set		1			
C10	263005-3	Rubber pin 6		2			
003		INC. 18					
004	142948-1	Indication plate complete		1			
005	650734-1	Switch TG73BDS-2		1			
006	231469-9	Compression spring 4		1			
007	419664-3	Lock off lever		1			
008	231469-9	Compression spring 4		1			
009	455480-9	Switch lever		1			
010	911263-2	Pan head screw M5X40 WR		3			
011	455437-0	Motor housing		1			
012	850H69-0	Name plate DHS680		1			
013	632D90-5	Stator unit		1	*		
013-1	629348-7	Stator unit	<	1	*		
013-1	629348-7	Stator unit		1	*		
013-2	629B61-9	Stator	S	1			
014	644808-8	Terminal		1			
015	632D81-6	Switch unit		1			
016	455440-1	Baffle plate		1			
017	911263-2	Pan head screw M5X40 WR		1			
018	183A15-9	Handle set		1			
C10	263005-3	Rubber pin 6		2			
018		INC. 3					
019	266091-3	Binding head tapping screw 4X50		2	*		
019-1	266467-4	Binding head tapping screw 4X50	O	2			
020	911128-8	Pan head screw M4X16 WR		1			
021	455483-3	Duct		1			
022	123269-0	Hook assembly		1			
023	911233-1	Pan head screw M5X20 WR		2			
024	142942-3	Blade case complete		1	*		
C10	213953-6	O-ring 24		1	*		
024-1	143256-3	Blade case complete	<	1	*		
C10	213953-6	O-ring 24		1	*		
024-1	143256-3	Blade case complete		1	*		
C10	213953-6	O-ring 24		1	*		
024-2	141P24-4	Blade case complete	O	1			
C10	213953-6	O-ring 24		1			
025	519359-9	Rotor assembly		1	*		
025		INC. 26-28			*		
025-1	519359-9	Rotor assembly	O	1			
025-1		INC. 26-28					
026	210022-4	Ball bearing 626DDW		1			
027	240045-8	Fan 55		1			

028	210051-7	Ball bearing 609LLB		1		
029	346837-4	Shaft lock		1		
030	286275-7	Cap		1		
031	233117-6	Compression spring 6		1		
032	262552-1	Rubber sleeve 6		1		
033	251247-1	Pan head screw M6X20		1	*	
033	251247-1	Pan head screw M6X20		1		
033-1	265117-8	Pan head screw M6X20	O	1		
034	266194-3	Flat head square neck bolt M6X9 0		1		
035	213565-5	O-ring 42		1	*	
035-1	213A83-9	O-ring 39	<	1		
036	210028-2	Ball bearing 606ZZ		1	*	
036-1	210137-7	Ball bearing 606ZZ	O	1		
036-1	210137-7	Ball bearing 606ZZ		1		
037	961052-5	Retaining ring (EXT) S-12		1		
038	227794-4	Helical gear 50		1		
039	257349-1	Sleeve 12		1		
040	911223-4	Pan head screw M5X16 WR		2		
041	319212-7	Bearing box		1		
042	211131-2	Ball bearing 6001DDW		1	*	
042	211131-2	Ball bearing 6001DDW		1		
042-1	210216-1	Ball bearing 6001DDW	>	1		
043	326459-6	Spindle		1		
044	285845-9	Bearing retainer 19-29		1		
045	231878-2	Tension spring 4		1		
046	319211-9	Safety cover		1		
047	961152-1	Retaining ring (EXT) S-34		1		
048	224473-5	Inner flange 35		1	*	
048-1	224593-5	Inner flange 35	<	1		
048-1	224593-5	Inner flange 35		1		
049	224409-4	Outer flange 35		1		
050	266924-2	Hex. socket hex. head flange bolt M6X18		1		
051	266034-5	Binding head tapping screw 4X1 6		1		
052	272281-8	Lever 39		1		
053	257982-9	Bow stop ring (EXT) E-8		1		
054	272272-9	Lever 45		1		
055	266735-5	Hex. head bolt M6X20		1	*	
055-1	265B21-3	Hex. head bolt M6X20	S	1		
056	941151-9	Flat washer 6		1	*	
057	252103-8	Hex. lock nut M5-8		1		
058	346836-6	Angular guide		1		
059	317986-4	Stopper		1		
060	213062-1	O-ring 9		1		
061	265084-7	Truss head shoulder screw M5X4 5,6		1		
062	256480-0	Shoulder pin 6-7		1		
063	911203-0	Pan head screw M5X8 WR		1	*	
063-1	911208-0	Pan head screw M5X10 WR	O	1		
063-1	911208-0	Pan head screw M5X10 WR		1		
064	455516-4	Top guide		1		

065	266318-1	Hex. socket set screw (flat point) M4X6		2			
066	455517-2	Bevel guide		1			
067	251896-4	Thumb screw M5X20		1			
068	231007-7	Compression spring 6		1			
069	253058-0	Flat washer 7		1	*		
070	256511-5	Shoulder pin 6-7		1			
071	346838-2	Depth guide		1			
072	941151-9	Flat washer 6		1			
073	332126-3	Pipe 6		1			
074	941151-9	Flat washer 6		1			
075	264103-6	Hex. nut M6		1			
076	272272-9	Lever 45		1			
077	257982-9	Bow stop ring (EXT) E-8		1			
078	319210-1	Base		1	*		
078-1	312B04-5	Base	S	1			
079	266436-5	Hex. socket set screw (flat point) M5X8		1			
080	266436-5	Hex. socket set screw (flat point) M5X8		1			
081	266436-5	Hex. socket set screw (flat point) M5X8		1			
082	251896-4	Thumb screw M5X20		1			
083	231007-7	Compression spring 6		1			
084	266436-5	Hex. socket set screw (flat point) M5X8		1			
085	253077-6	Flat washer 6		1	*		
086	620K93-3	Controller	S	1			
087	652119-7	Pan head screw M2X6	S	6			
A01	783203-8	Hex. wrench 5		1	*		
A01-1	783217-7	Hex. wrench 5	O	1			
A02	A-85101	T.C.T.SAW BLADE 165X24TX20		1	*		
A02	B-57336	TCT BLADE165X20X56TWOOD/M DF DB		1			
A02-1	B-62985	TCT BLADE165X25T WOOD EFFIC UT	X	1			
A03	164095-8	Guide rule		1			
A04	196961-1	Dust nozzle set		1			
C10	911128-8	Pan head screw M4X16 WR		1			
A05B	196953-0	Guide rail adapter D set		1	*		
A05	821551-8	Connector plastic case (type 3)		1			
C10	453974-8	Latch		4			
A05D	196399-0	Battery BL1840 set		2	*		
A05E	196671-0	Battery BL1850 set		2	*		
A05-1 D	196399-0	Battery BL1840 set	O	2	*		
A05-1 E	196671-0	Battery BL1850 set	O	2	*		
A05-2 D	197265-4	Battery BL1840B set	<	2	*		
A05-2 E	197280-8	Battery BL1850B set	<	2	*		
A05-2 I	197280-8	Battery BL1850B set		2	*		
A05-3	197265-4	Battery BL1840B set	O	2			

D							
A05-3	197280-8	Battery BL1850B set	O	2			
A06	838182-6	Inner tray		1			
A06	450128-8	Battery cover		1			
A07C	805F45-7	Indication label DHS680ZJ		1	*		
A07	821551-8	Connector plastic case (type 3)		1			
C10	453974-8	Latch		4			
A07F	806S33-5	Indication label DHS680Y1J		1	*		
A07-1 C	805F43-1	Indication label DHS680ZJ	O	1	*		
A07-1 F	809H37-0	Indication label DHS680Y1J	O	1	*		
A07-2 C	816A47-8	Indication label DHS680ZJ	O	1			
A07-2 F	816A57-5	Indication label DHS680Y1J	O	1			
A07-2 H	817K34-0	Indication label DHS680ZJ1		1			
A07-2J	817K40-5	Indication label DHS680Y1J1		1			
A08C	805F46-5	Plastic case label DHS680ZJ		2	*		
A08	838182-6	Inner tray		1			
A08F	806S34-3	Plastic case label DHS680Y1J		2	*		
A08-1 C	809H36-2	Plastic case label DHS680ZJ	O	2	*		
A08-1 F	809H38-8	Plastic case label DHS680Y1J	O	2	*		
A08-2 C	816A48-6	Plastic case label DHS680ZJ	X	2			
A08-2 F	816A58-3	Plastic case label DHS680Y1J	X	2			
A08-2 H	817K35-8	Plastic case label DHS680ZJ1		2			
A08-2J	817K41-3	Plastic case label DHS680Y1J1		2			
A09	196953-0	Guide rail adapter D set		1	*		
A09D	805F49-9	Indication label DHS680RMJ		1	*		
A09E	805F51-2	Indication label DHS680RTJ		1	*		
A09-1	196953-0	Guide rail adapter D set	O	1	*		
C10	346843-9	Rule bar D		2	*		
A09-1 D	805V45-3	Indication label DHS680RMJ	O	1	*		
A09-1 E	806H07-0	Indication label DHS680RTJ	O	1	*		
A09-1	196953-0	Guide rail adapter D set		1	*		
C10	346843-9	Rule bar D		2	*		
A09-2	196953-0	Guide rail adapter D set	O	1			
C10	346843-9	Rule bar D		2			
A09-2 D	816A52-5	Indication label DHS680RMJ	O	1			
A09-2 E	816A54-1	Indication label DHS680RTJ	O	1			
A09-2 I	817K38-2	Indication label DHS680RTJ1		1			
A10D	805F50-4	Plastic case label DHS680RMJ		2	*		
A10E	805F52-0	Plastic case label DHS680RTJ		2	*		
A10	196235-0	Battery BL1815N set		1			
A10-1 D	805V77-0	Plastic case label DHS680RMJ	O	2	*		

A10-1 E	806H08-8	Plastic case label DHS680RTJ	O	2	*		
A10-2 D	816A53-3	Plastic case label DHS680RMJ	X	2			
A10-2 E	816A55-9	Plastic case label DHS680RTJ	X	2			
A10-2 I	817K39-0	Plastic case label DHS680RTJ1		2			
A11	***DC18RC	DC18RC FAST CHARGER		1			
A12	196953-0	Guide rail adapter D set		1	*		
A12-1	196953-0	Guide rail adapter D set	O	1	*		
C10	346843-9	Rule bar D		2	*		
A12-1 I	196953-0	Guide rail adapter D set		1	*		
C10	346843-9	Rule bar D		2	*		
A12-2	196953-0	Guide rail adapter D set	O	1			
C10	346843-9	Rule bar D		2			
F08-3	197606-4	Battery BL1830B set (2 pcs)	O	1	*		
F09-3	197600-6	Battery BL1830B set	O	1			
F10-4	197599-5	Battery BL1830B set	O	1			
F11-3	197267-0	Battery BL1840B set	O	1			
F12-3	197265-4	Battery BL1840B set	O	1			
F13	194368-5	Guide rail 1400 set		1			
F14	194925-9	Guide rail 1900 set		1			
F16	194367-7	Guide rail 3000 set		1			
F18	196664-7	Bevel guide set		1	*		
F21	194416-0	Sheet 10000 set		1			
F22	194417-8	Rubber sheet 10000 set		1			
F23	194418-6	Position sheet 1400 set		1			
F25	194910-2	Position sheet 1900 set		1			
F27	196952-2	Dust nozzle set		1			
F28	196961-1	Dust nozzle set		1			
F37	199140-0	Guide rail 1000 set		1			
F38	199141-8	Guide rail 1500 set		1			
F41	191B17-7	Guide rail adapter D set		1			
F41	191B17-7	Guide rail adapter D set		1	*		
F41-1	191B17-7	Guide rail adapter D set	O	1			
F42	197252-3	Guide rail adapter set		1	*		
F42-1	197252-3	Guide rail adapter set	O	1			

Please state Parts No. when your order.

Print Date 08/11/2025