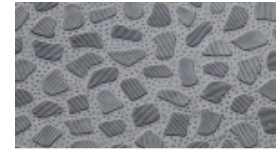
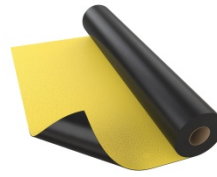


## PROTAN GG 2,0



### Product Description:

Protan GG 2,0 is a high quality fiberglass reinforced thermoplastic waterproofing membrane. Protan GG 2,0 contains stabilizers, which makes the product resistant to high and low temperatures.

### Application Areas:

Protan GG 2,0 is a waterproofing membrane used on parking decks applications, intensive green roofs, culverts and in ground constructions.

### Characteristics / Benefits:

- The membrane has a textured surface which provides increased friction.
- The membrane is welded together using hot air which provides a homogenous joint.
- Installation is safe without the use of an open flame.
- Weather independent installation.
- Protan membrane can be recycled and has a low carbon footprint.

**Table 1: Product properties**

PROPERTY	VALUE	UNIT	EN 13956 - TEST METHOD
Thickness	2,0 (-5/+10%)	mm	EN1849-2
Tensile strength L/T	≥ 600	N/50mm	EN12311-2(A)
Elongation L/T	≥ 200	%	EN12311-2(A)
Tear strength trapezoidal	≥ 130	N/50mm	EN12310-2
Dimensional stability	± 0.1	%	1107-2:2001
Foldability at low temperature	≤ 30	°C	EN495-5
Resistance to static load	≥ 20	Kg	EN12730(C)
Resistance to impact	≥ 900	mm	EN12691(A)
Joint shear resistance	≥ 600	N/50mm	EN12317-2
Water vapour resistance	28	M	ISO 12572:2001
Water tightness (10 kPa)	Pass		1928:2000 (A)
Water tightness (150 kPa)	Pass		
Hail resistance			
Hard substrate	≥ 22		EN13583
Soft substrate	≥ 47		EN13583
Dangerous substances	None		
Reaction to fire	Class E		EN13501-1

### Colours and Protan colour codes:

UPPER SURFACE: <i>Protan colour code</i> <sup>1)</sup>	Yellow,	
UNDER SIDE:	Dark grey	

## PRODUCT DATA SHEET

### Dimensions / packaging: Protan GG 2,0

Width:	2m
Length:	10m
Roll:	20m <sup>2</sup> /44kg + core
Pallet:	340m <sup>2</sup> /748kg + core and pallet

Other widths and lengths can be delivered to order.

### Health, Environment & Safety:

There is no requirement for a material safety data sheet according to EC-regulation 1907/2006, article 31. The product does not harm the environment when used as specified.

### Environment:

Protan GG contains no substances which are listed on REACH/ ECHA's (European Chemicals Agency) candidate list.

The membrane contains no priority environmental pollutants or other relevant substances in quantities considered to be hazardous to health and the environment.

Leaching from the product is assessed to not adversely affect soil, ground water or drinking water.

### Installation details:

Installation must be carried out by a Protan Authorised Roofing Contractor. The membrane is welded using hot air and shall be installed according to the Protan Technical Installation Manual and associated Protan Technical Information Sheets.

### Storage:

Protan membrane should be kept dry with the rolls placed on pallets and protected at the building site with tarpaulins or similar.

### Approvals:



[Protan AS SINTEF Certification](#)

### Protan Legal Notice

The details provided in this document, especially the recommended application and utilisation for the products and their system accessories, are based on Protan's current knowledge and experience of the products when properly stored, handled and installed under normal conditions according to Protan's recommendations. A warranty in respect of merchantability or of fitness for a particular utilisation, nor any liability arising out of any legal relationship whatsoever, cannot be inferred either from this information, or from any written or verbal recommendations, due to the differences in materials, substrates and actual site conditions in practice. The user of the product is responsible for the product's suitability for the intended application. Protan reserves the right to change product specifications without notice. Additionally, Protan's current sales and delivery terms are valid and applicable for all orders. It is necessary for the user to always refer to the latest version of the relevant Product Data Sheet, which can be requested directly from Protan. All information provided, as well as technical and drawing data, complies with current technical standards and is based on Protan's knowledge and experience. In addition, national standards and regulations must be observed where appropriate.