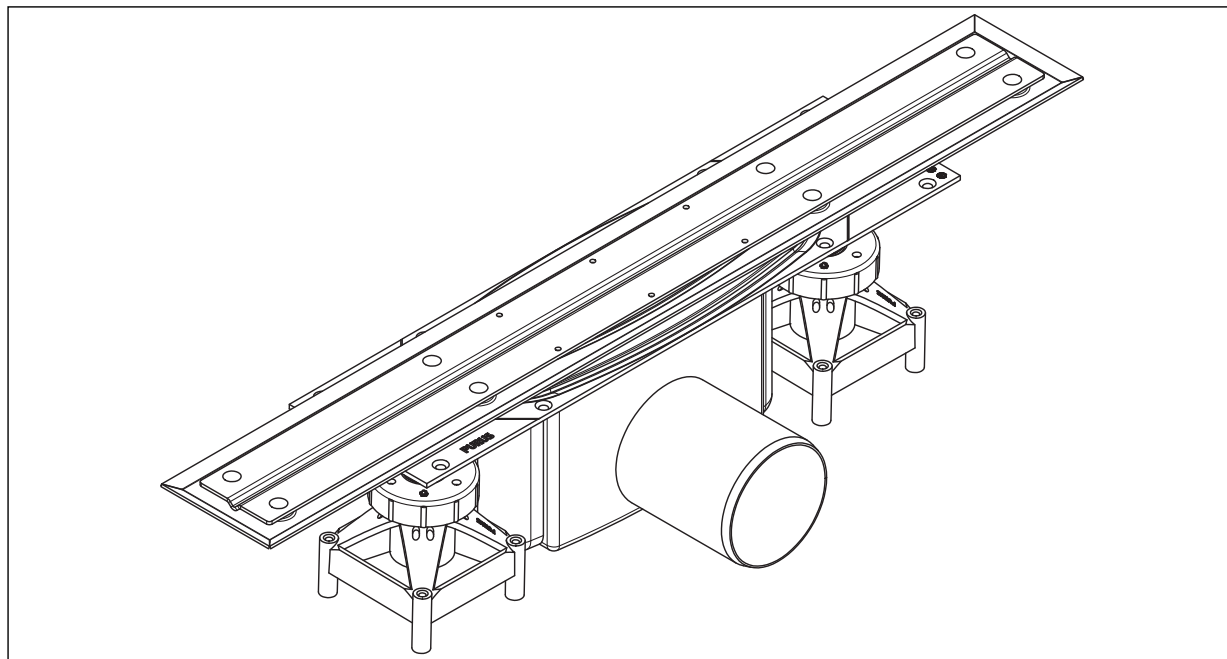
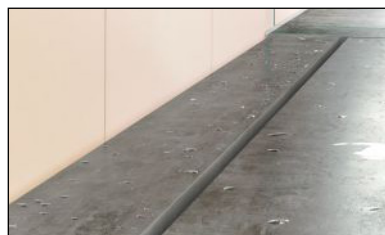


## Purus Line Premium - Concrete Installation Instructions

**for tiled concrete floors**



**Purus Line Premium**



Please contact us for further information:

**Tel: 0113 2893172**  
**Fax: 0113 2893778**  
**info@purusgroup.com**  
**www.purusgroup.com**

Purus Ltd.  
Suite 6, Arena Park  
Tarn Lane, Scarcroft  
Leeds  
LS17 9BF

Our ongoing product development may lead to changes in execution, design and construction, for which we accept no liability.

# PURUS LINE PREMIUM - CONCRETE INSTALLATION INSTRUCTIONS

## Important

Read all the pages of these instructions fully and thoroughly before you commence installing and keep in a safe location for future reference. For further information please call the Purus Technical Helpline on 0113 289 6102.

Please ensure these instructions are passed on to the end user as they include Maintenance Instructions for the NOOD trap.

## Plumbing

All plumbing work should be carried out by a fully qualified professional plumber. 1½ inch ABS pipe adapter/connector provided. If using the 1½" adapter, fix to the gully with MS Polymer.

## Check List/Safety Notes

### • We recommend using the Puragum Tanking Kit.

- Ensure you have all the contents supplied before installation. If you do not have all the contents do not install. Contact your supplier straight away.
- Check all the contents for damage. If any parts are damaged do not install. Contact your supplier straight away.
- The grate when installed must be horizontal and flat. It also must be level with the ceramic tile surface and not at an angle or on a slope.
- Check where all pipes, electrical cables and all other services are prior to drilling, cutting and screwing into walls, ceilings and floors.
- Ensure your tools for installation are fit for purpose and follow manufacturer's instructions provided with the tools.
- Do not use power tools on the screws of the Purus Line Premium drainage channel.
- Remove any skirting boards in the room.
- Any gaps or holes/damage in the walls and floors must be made good.
- Always ensure the installation and working areas are kept safe, especially from children and pets. Ensure that no tools are lying around and that the working and installation areas are clean and tidy at all times.
- The maximum height for the tile insert grate is 12mm. Combined tile and adhesive should not exceed 12mm. It is recommended that a maximum of 10mm ceramic tile is used.
- Ensure that all sharp devices such as knives and saws have covers on them at all times. Do not carry knives in pockets.
- Safety goggles, masks and gloves should be worn at all times.
- When installing into concrete build falls to the gully with screed so water can run into it. The minimum for this should be 1:150 to ensure the flow of water to the floor trap and no more than 1:50 to reduce the risk of slipping. A nominal 2% falls is usually used.
- Concrete floors should be primed with Puragum Primer.
- The tanking kit covers 7-8m².
- Always ensure the weep holes are kept intact when using the Puragum.
- Check the litres per minute output of your shower/showers before installing the channel especially if you are going to use a pump. The flow rate for the Low 50mm gully is 30 litres per minute. Do not exceed this limit unless using multiple gullies.
- Check with your tile supplier that your tiles are suitable for a wetroom.

## Underfloor Heating

If your underfloor heating is an electrical system, ask the manufacturer if the electric underfloor heating mat is suitable for a wetroom and if the temperature can be controlled by a thermostat, if not, do not use. Always follow the Underfloor Heating Manufacturer's Instructions of how to install the system.

The underfloor heating system must be fully buried into concrete/screed/tile adhesive/levelling compound before the tanking is applied. Please refer to the Underfloor Heating and Tile Adhesive/Grout manufacturers' instructions for guidance or contact the supplier's technical help line before installing.

From the bottom upwards you should fix in this order: the floor surface; underfloor heating mat fully embedded into screed/concrete/suitable levelling compound; wetroom tanking, tile adhesive, tiles, tile grout.

When the Tanking System, The Tile Adhesive and Tile Grout is fully cured for a wetroom (always check the Tile Adhesive and Tile Grout manufacturers' drying out times for a wetroom), then turn on the Thermostat according to the manufacturer's instructions only by 3°C a day to a maximum of 30°C. This will take 10 days in the first instance. After that you can select your ambient temperature. Never go over 30°C.

## Packaging

Once packaging has been unpacked and used it should always be taken to the nearest local authority waste collection site for recycling. The packaging must not be thrown away with normal household waste.

## Liability

The Manufacturer will not accept any liability for failure if the Purus Line Premium Drainage Channel and/or Puragum Tanking Kit has been installed incorrectly and with disregard to the instructions.

**It is extremely important when installing a wet room that you fully seal/tank the room. *Take your time.* The tanking of the room is the most important part. Check all tapes and gaskets are secure and bonded before tiling.**

**It is also extremely important to follow the manufacturers' instructions for the drying time for the tile adhesive and grout when being used for a wetroom. It will be significantly longer than for tiles in a shower tray situation.**

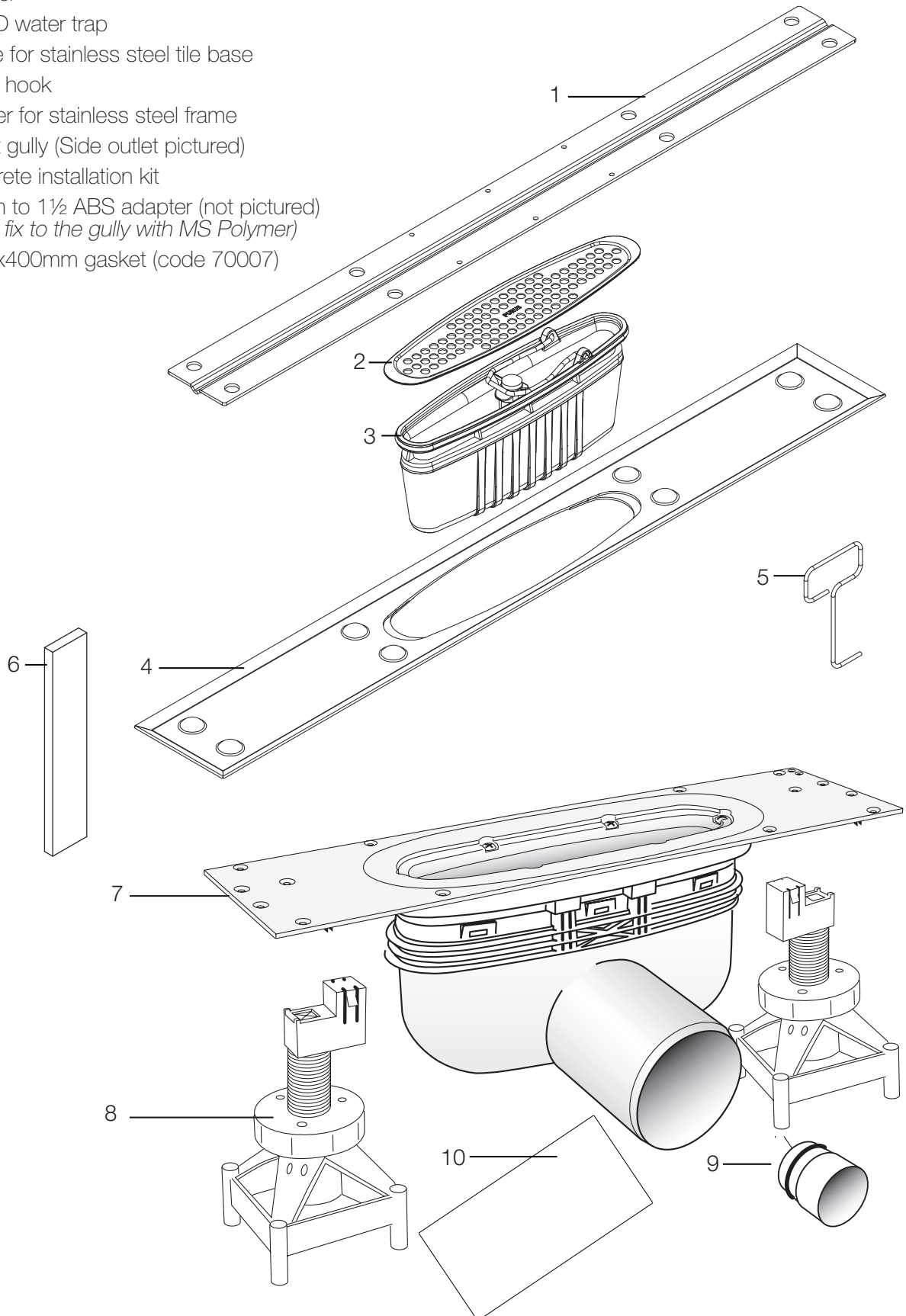
**After the drying period, ensure that you test your room after tiling to ensure the room is fully watertight. Do not use the wet room/shower room until tests are thoroughly completed. The completed wetroom must be left to dry to the minimum stated in the manufacturer's instructions for the adhesive and grout for a wetroom. It may be beneficial to use an epoxy resin grout as it will cure quicker and offer better water resistance.**

**As an alternative, you can use a modified polymer tile adhesive and epoxy grout for quicker drying times.**

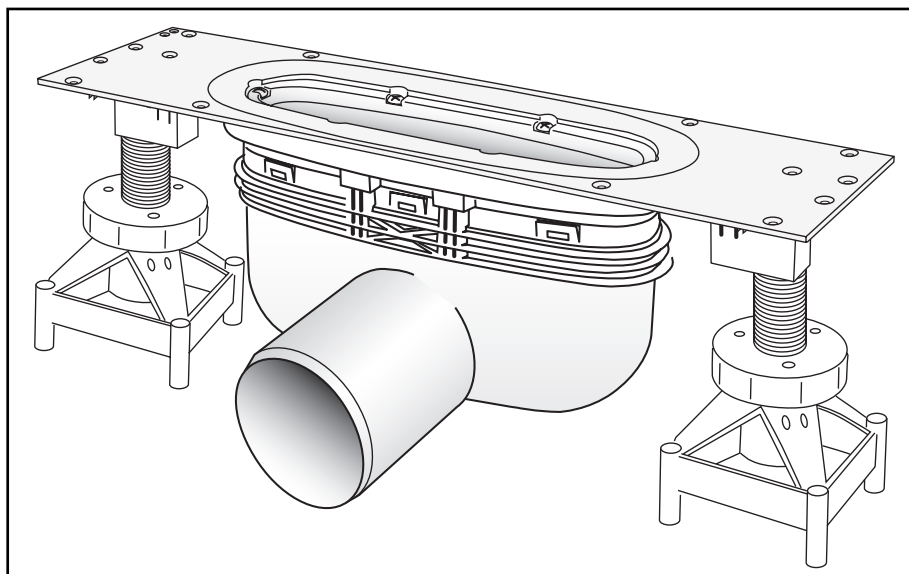
**Always verify drying times for adhesive and grouts before using the wetroom and shower.**

## Purus Line Premium with Low 50mm Outlet - Contents

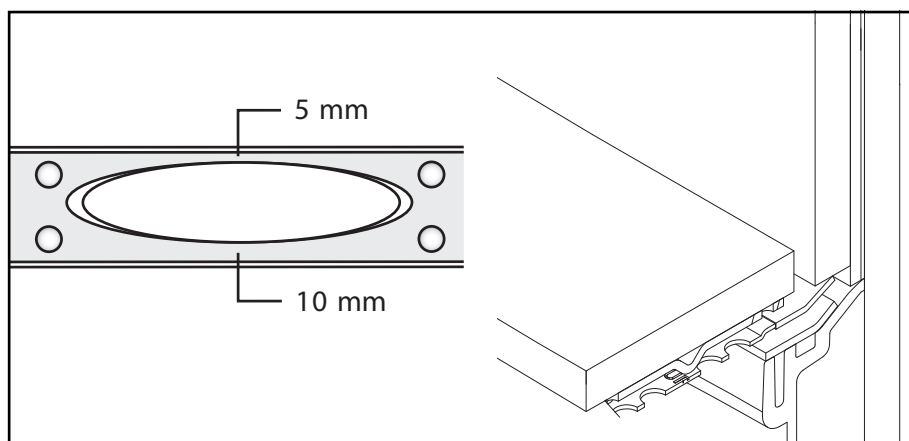
1. Stainless steel base for tile
2. Strainer
3. NOOD water trap
4. Frame for stainless steel tile base
5. Lifting hook
6. Spacer for stainless steel frame
7. Outlet gully (Side outlet pictured)
8. Concrete installation kit
9. 50mm to 1½ ABS adapter (not pictured)  
(if using, fix to the gully with MS Polymer)
10. 600x400mm gasket (code 70007)



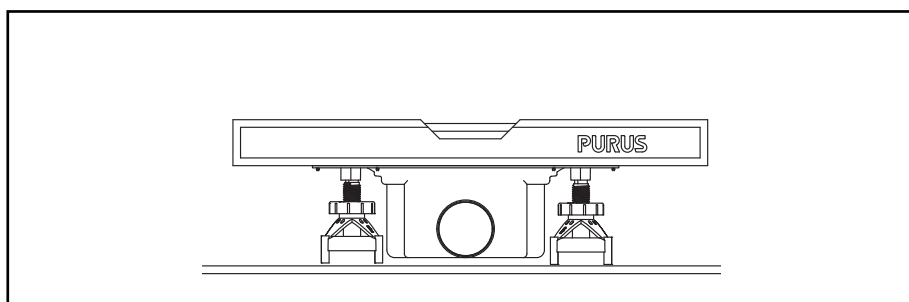
# PURUS LINE PREMIUM - CONCRETE INSTALLATION INSTRUCTIONS



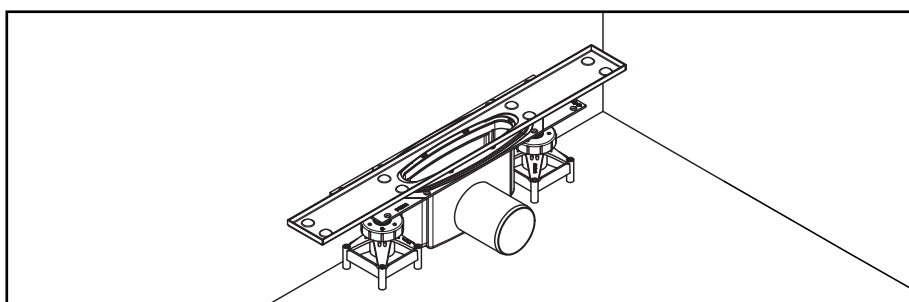
Install the Purus Line Premium drainage channel into concrete with the help of the Concrete Installation Kit. Press the support legs into the snap-in attachments on the bottom of the drainage channel.



The gully hole has a flange of just 5mm on one side so that the channel can be placed against the wall if desired. If you are installing the Purus Line Premium drainage channel against the wall, you must leave a distance between the frame and the finished and tiled wall of at least 6mm. Please use the 6mm spacers provided.

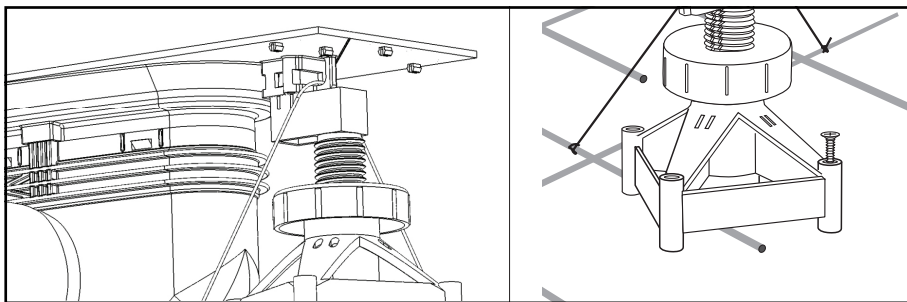


Ensure the gully is positioned horizontally.

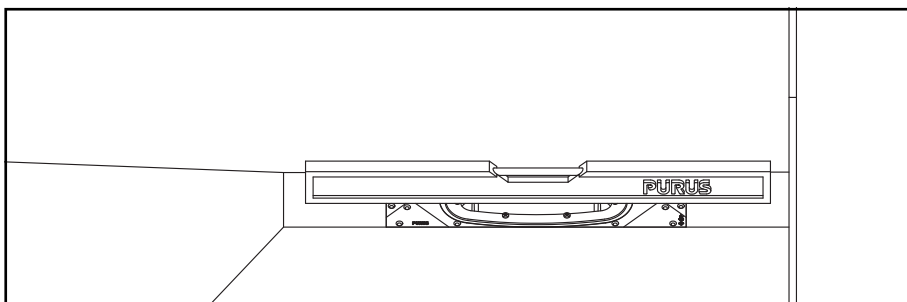


When placing the Tile Insert frame over the outlet gully, ensure that the gully is central and that the NOOD water trap can be removed.

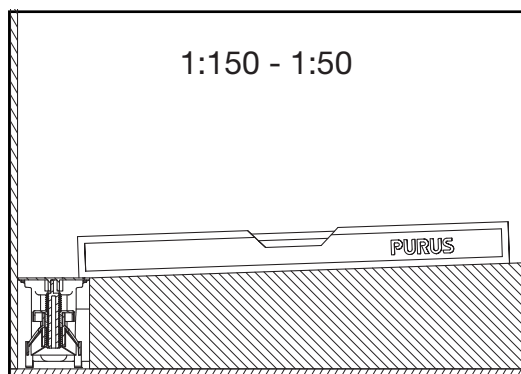
# PURUS LINE PREMIUM - CONCRETE INSTALLATION INSTRUCTIONS



Now fasten the support legs (already attached to the drainage channel) to the reinforced cement by using tying wiring. Secure the tying wiring through the loop on the drainage channel where the support legs are attached. Ensure your DPM is not broken.



The surface that will be covered by the Tile Insert frame must be flat.

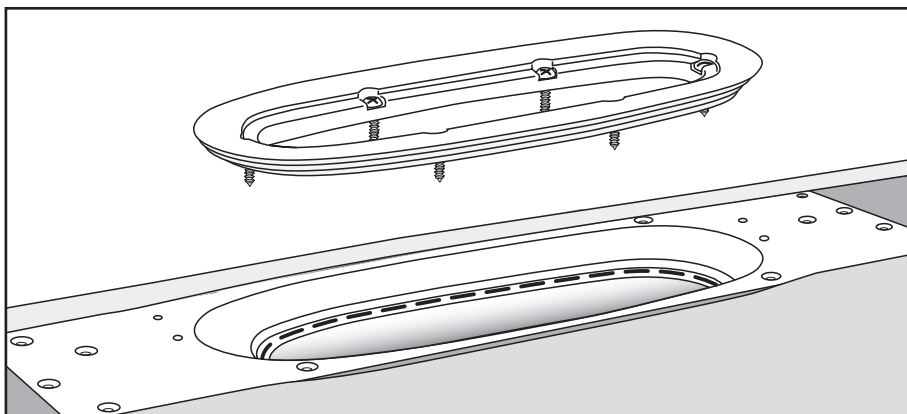


Now connect the gully to the waste pipe system. The channel is supplied with a 42.9mm (1½ inch) ABS pipe adapter for solvent welding and connecting to the 42.9mm (1½ inch) waste pipe. If your waste pipe is an ABS plastic 1½ inch or 42.9mm pipe then you can use the adapter. If using the adapter, fix to the gully with MS Polymer.

The push fit end must be fully inserted into the gully and fixed with MS Polymer prior to connecting to the waste pipe. The gully adapter can then be solvent welded to the waste pipe by a fully qualified professional plumber.

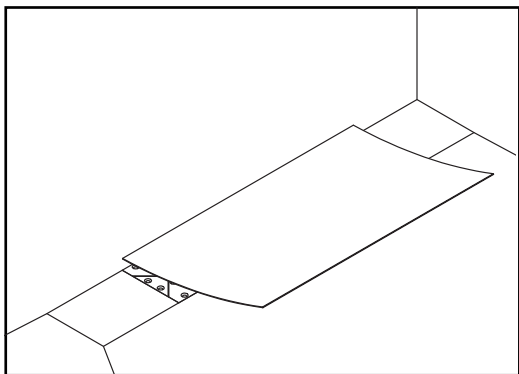
If the waste pipe is not an ABS plastic 1½ inch or 42.9mm pipe then a mechanical fixing connector must be used to connect the gully outlet to the waste pipe by a fully qualified professional plumber. Once the gully has been connected to the waste pipe and tested for leaks by your fully qualified plumber, the hole cut for connecting the pipe should be made good.

Now cast the floor with your concrete screed. The showering area should have falls built into the subfloor so that the water runs towards the drain. The minimum for this should be 1:150 to ensure the flow of water to the floor trap and no more than 1:50 to reduce the risk of slipping.

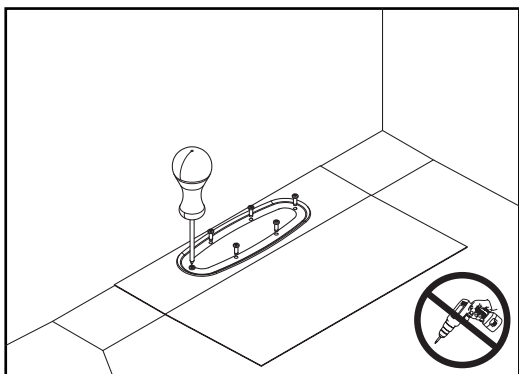


Unscrew the six screws from the gully and lift up the oval clamping ring.

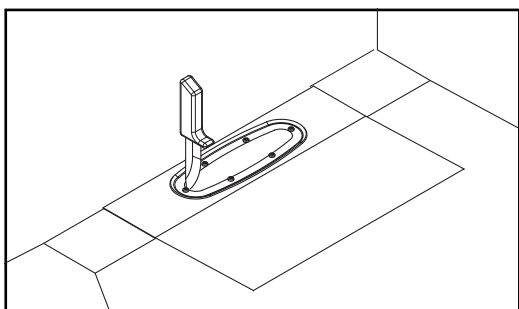
# PURUS LINE PREMIUM - CONCRETE INSTALLATION INSTRUCTIONS



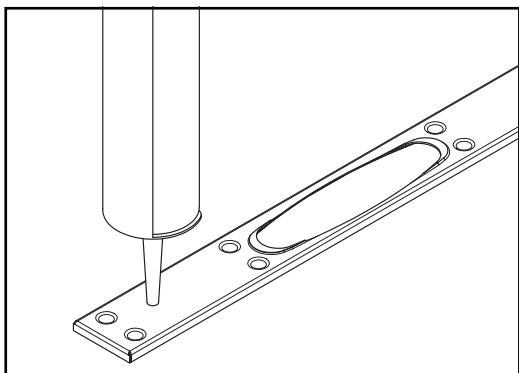
Install the Puragum tanking kit/waterproof membrane according to the manufacturer's installation instructions. Details can be found at [www.purusgroup.com](http://www.purusgroup.com).



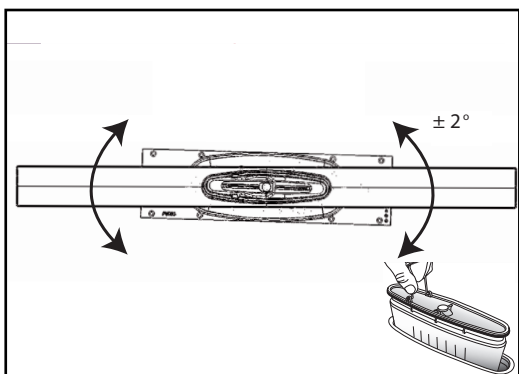
Press down the oval clamping ring back into position and, using an awl, make holes in the drain sleeve for the screws. Tighten the six screws into position. **Never use power tools.**



Use a knife to cut the waterproof membrane inside the clamping ring. Now apply the tapes and Puragum waterproof membrane from the Puragum Tanking Kit and allow to dry as per the installation instructions.

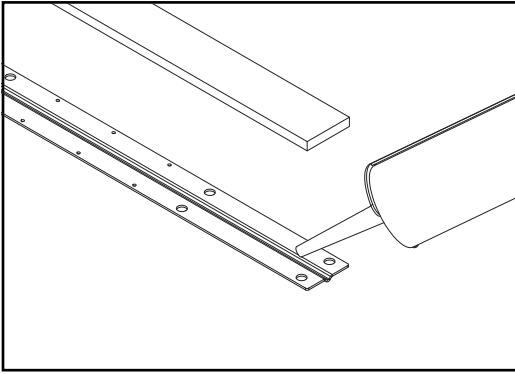


Using MS Polymer from the Puragum Tanking Kit, glue the Tile Insert frame in a dotted pattern and securely fasten to the waterproof membrane.

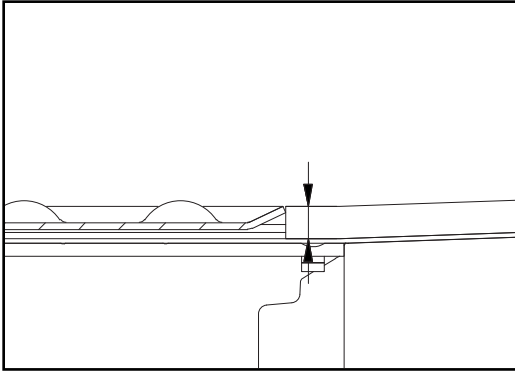


Place the Tile Insert frame in the desired position, ensuring that the NOOD water trap is still accessible. Please note that the hole for access to the NOOD water trap is asymmetric.

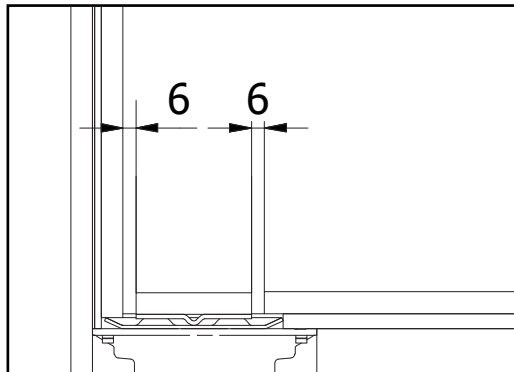
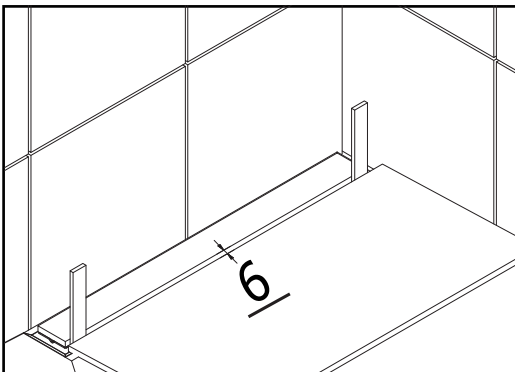
# PURUS LINE PREMIUM - CONCRETE INSTALLATION INSTRUCTIONS



Use MS Polymer from the Puragum Tanking Kit to fix the tile to the Tile Insert Frame. The tile should extend out so much so that the distance to the tiles is 6mm.



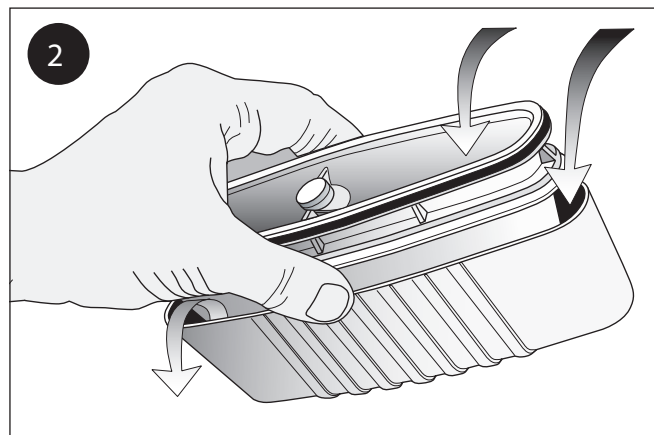
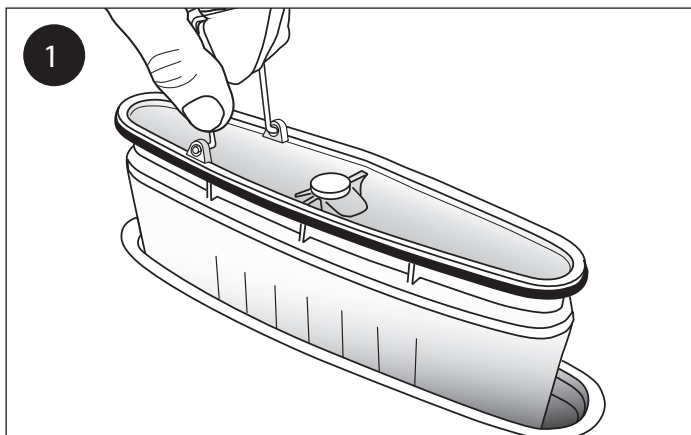
Ensure that the tiles on the floor are at the same level as the tiles in the Tile Insert frame. You can use additional tile adhesive to raise the tiles if needed.



Use the 6mm spacer to mark the correct distance between the Tile Insert grate and the tiles.

## Cleaning and Maintenance

These Cleaning and Maintenance instructions must be handed to the client upon completion.



1. Lift out the NOOD water trap as above.
2. If necessary, rinse the NOOD water trap using water as shown.
3. Only use water and do not use any bleach-based or caustic cleaning products or hair dye products whilst the NOOD is in position. Remove the NOOD first.
4. Replace the NOOD water trap with two thumbs at each short end.
5. If you have a blockage in the waste pipe system, remove the NOOD before rectifying/cleaning.

Hold the NOOD water trap with the spring loaded body fully open whilst rinsed clean. Use only water and, if required, a small brush to clean the NOOD. It is important that you do not use bleach, bleach-based or caustic cleaning products on or in the NOOD water trap.

If bleach is to be used in the pipework, then the NOOD water trap must first be removed and bleach poured directly into the pipework.

Make sure the gaskets are completely clean so the NOOD is watertight. Ensure when placed back that the gully is fully inserted so the gasket is watertight using two thumbs at each short end.