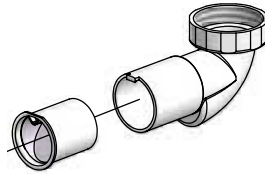


21759
2017:1

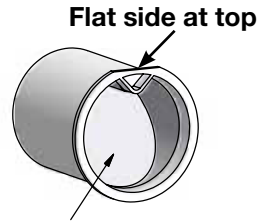
PURUS

PUM

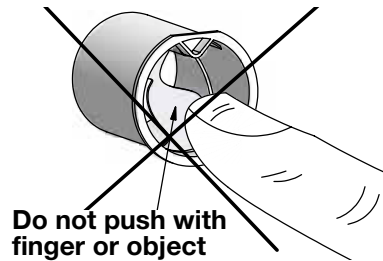
Installation Instructions



- 1.** Make sure the PUM cartridge is in its correct position before you start, with the flat side at the top. If not, remove and return to correct position - see maintenance instructions point 3.



Cartridge in correct position

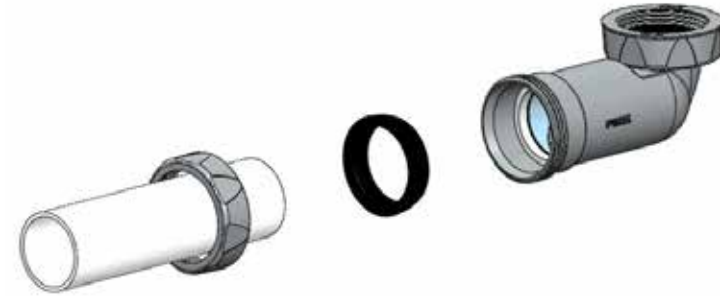


- 2.** Do not push the silicone part with an object or finger as this could damage the membrane cartridge.

- 3.** It is advisable to check it is working correctly and in the correct position before you install it.
- 4.** Do this by holding it under a tap and allowing water to flow through in the same direction as if it was installed.
- 5.** Identify the size of the waste outlet under the Basin/Bidet.
- 6.** If it is 1½" then unscrew and remove the 1½" to 1¼" adapter (Item A).
- 7.** Ensure the washer is positioned centrally, then hand-tighten the screw thread adapter to the outlet.

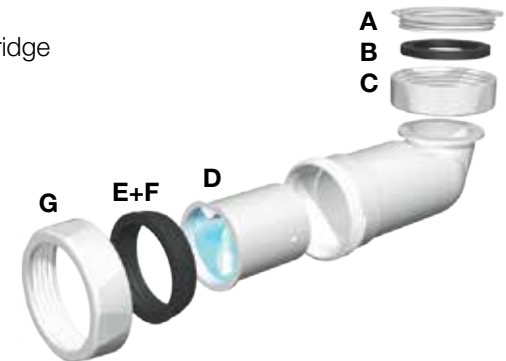


- 8.** Connect pipework using the mechanical fitting to the other end.



- 9.** If you are using an ABS pipe then use the gasket (item E) that is already assembled with the PUM.
- 10.** If you are using a Polypropylene pipe then you will need to use the alternative gasket included in the pack (item F).
- 11.** You can identify this (item F), as it has a flange around the inner side so you can't push the pipe completely through.

- A) 1¼" - Adapter to Basin/Bidet outlet
B) Gasket ø44x32x4mm
C) 1½" Connector
D) Purus Universal Membrane cartridge
E) Gasket ø36mm (1¼" ABS pipe)
F) Gasket ø34mm (1¼" PP pipe)
G) 1¼" Connector



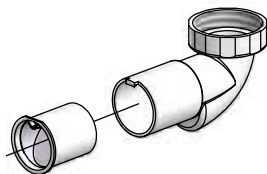
Our ongoing product development may lead to changes in execution, design and construction, for which we accept no liability.


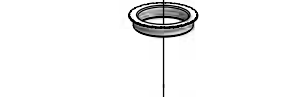
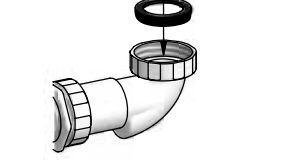

21759
2017:1

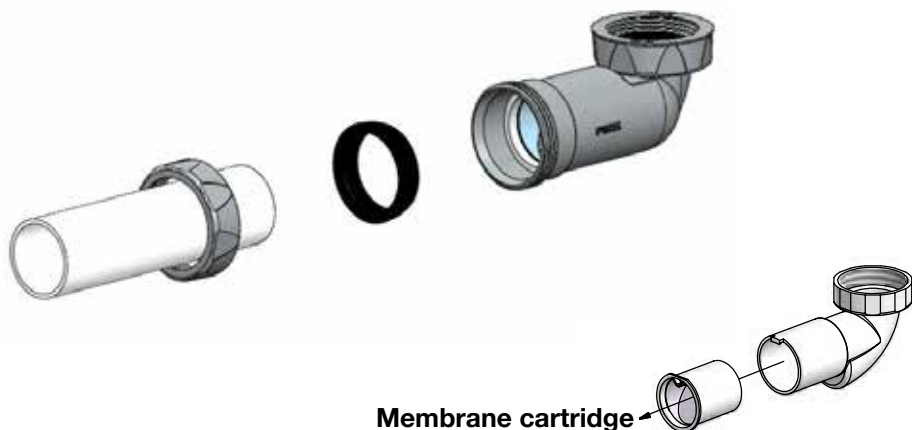
PURUS

PUM

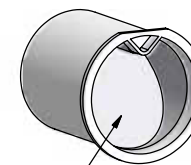
Maintenance Instructions



1. Remove the PUM by unscrewing from the Basin/Bidet waste. 
2. Unscrew the pipework from the other side. 
3. Carefully remove the PUM cartridge from the outer shell by pushing with your finger. Take care to push the top of the cartridge and not to damage the membrane. 
4. Take care to remove any hair and particles that may have become trapped, then carefully rinse under warm running water. 

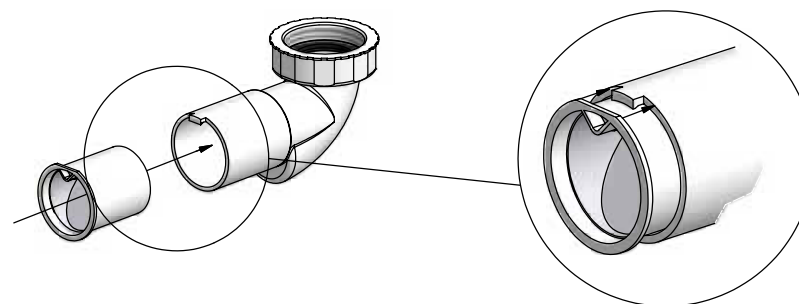


You can order a replacement white cartridge: code 8075411.

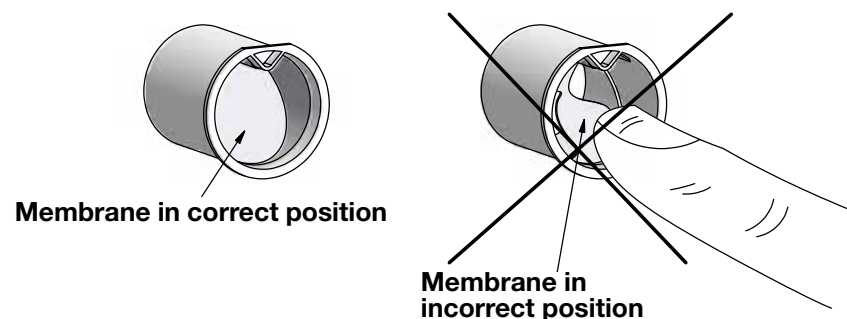


8075411

5. Insert the cartridge back inside the outer shell making sure it is in the correct position with the triangle at the top. See picture.



NOTE: For the odour lock to work correctly, it is essential that the membrane rests in its proper position in the holder. When inserted check that the membrane is not jammed inside the cartridge in an open position as it will then not be odour tight. You can check it is working correctly by allowing water to run through it by holding it under a running tap.



6. Reinstall following the installation instructions.