

RX 60 Technical Data

Electric Forklift Truck

[RX 60-35 \(Plus\)/600|Li-Ion](#)

[RX 60-40 \(Plus\)|Li-Ion](#)

[RX 60-40 \(Plus\)/600|Li-Ion](#)

[RX 60-45 \(Plus\)|Li-Ion](#)

[RX 60-45 \(Plus\)/600|Li-Ion](#)

[RX 60-50 \(Plus\)|Li-Ion](#)

[RX 60-50 \(Plus\)/600|Li-Ion](#)



RX 60-35/50 Electric Forklift Truck
Everything. Except emissions.

This specification sheet, which conforms to VDI guideline 2198, provides the technical values for the standard equipment only.
Different tyres, other masts, the use of accessories, etc. may result in other values.



				STILL	STILL	STILL	STILL	STILL	STILL	STILL	
Features	1.1	Manufacturer									
	1.2	Manufacturer's type designation		RX 60-35 (Plus)/600 Li-Ion	RX 60-40 (Plus) Li-Ion	RX 60-40 (Plus)/600 Li-Ion	RX 60-45 (Plus) Li-Ion	RX 60-45 (Plus)/600 Li-Ion	RX 60-50 (Plus) Li-Ion	RX 60-50 (Plus)/600 Li-Ion	
	1.2.1	Manufacturer model number		6331	6332	6333	6334	6335	6336	6337	
	1.3	Drive		Electric	Electric	Electric	Electric	Electric	Electric	Electric	
	1.4	Operation		Seated	Seated	Seated	Seated	Seated	Seated	Seated	
	1.5	Load capacity/load	Q	kg	3500	4000	4000	4500	4500	4990	
	1.6	Load centre	c	mm	600	500	600	500	600	600	
	1.8	Load spacing	x	mm	515	515	515	515	525	525	
	1.9	Wheel base	y	mm	2046	2046	2046	2046	2046	2120	
Weights	2.1	Service weight incl. battery		kg	6310	6310	6582	6582	7164	7768	
	2.2	Axle load, laden	front/rear	kg	8747/1063	9326/984	9512/1070	10067/1015	10453/1211	10971/1183	
	2.3	Axle load, unladen	front/rear	kg	3322/2988	3322/2988	3312/3270	3312/3270	3457/3707	3457/3707	
Tyres/chassis	3.1	Tyres			Superelastic	Superelastic	Superelastic	Superelastic	Superelastic	Superelastic	
	3.2	Tyre size	front	mm	250/70-15	250/70-15	355/50-15	355/50-15	355/50-15	355/50-15	
	3.2	Tyre size	rear	mm	200/75-9 (21x8-9)	200/75-9 (21x8-9)	200/75-9 (21x8-9)	200/75-9 (21x8-9)	200/75-9 (21x8-9)	200/75-9 (21x8-9)	
	3.5	Number of wheels (x = driven)	front/rear		2x/2	2x/2	2x/2	2x/2	2x/2	2x/2	
	3.6	Track width	front/rear	b ₁₀ /b ₁₁	mm	1095/920	1095/920	1104/920	1104/920	1104/920	1104/932
	4.1	Tilt of mast	forward/backward	α/β	°	7/7	7/7	7/7	7/7	7/7	7/5
Basic dimensions	4.2	Height of mast	retracted/extended	h ₁ /h ₄	mm	2300/3762	2300/3762	2300/3987	2300/3987	2300/3987	2300/3887
	4.3	Free lift		h ₂	mm	160	160	160	160	160	160
	4.4	Lift ¹		h ₃	mm	2980	2980	2980	2980	2980	2780
	4.7	Height above protective roof (low variant)		h ₆	mm	2336 (2241)	2336 (2241)	2333 (2243)	2333 (2243)	2333 (2243)	2348 (2253)
	4.8	Seat height in relation to SIP (low variant)		h ₇	mm	1345	1345	1343	1343	1342	1351
	4.12	Coupling height		h ₁₀	mm	540/415	540/415	540/415	540/415	540/415	560/435
	4.19	Total length		l ₁	mm	4101	4101	4101	4111	4111	4220
	4.20	Length including fork backs		l ₂	mm	2901	2901	2901	2911	2911	3020
	4.21	Total width		b ₁	mm	1320	1320	1399	1399	1399	1399
	4.22	Fork dimensions		s/e/l	mm	50/120/1200	50/120/1200	50/120/1200	50/120/1200	60/130/1200	60/130/1200
	4.23	Fork carriage ISO 2328, class/form A, B				ISO III A	ISO III A	ISO III A	ISO III A	ISO III A	ISO III A
	4.24	Fork carriage width		b ₃	mm	1200	1200	1200	1310	1310	1310
	4.31	Ground clearance under mast, with load		m ₁	mm	131	129	127	126	126	125
	4.32	Ground clearance centre wheel base		m ₂	mm	145	145	144	144	144	153
	4.34.1	Working aisle width with pallet 1000 x 1200 crossways ^{3,4}		A _{st}	mm	4265	4265	4265	4275	4275	4370
	4.34.2	Working aisle width with pallet 800 x 1200 lengthways ^{3,4}		A _{st}	mm	4465	4465	4465	4475	4475	4570
	4.35	Turning radius		W _a	mm	2550	2550	2550	2550	2550	2645
	4.36	Smallest pivoting distance		b ₁₃	mm	725	725	725	725	725	729
	Performance data	5.1	Driving speed	with load	km/h	20	20	20	20	20	20
		5.1	Driving speed	without load	km/h	20	20	20	20	20	20
5.2		Lifting speed (plus*/standard performance)	with load	m	0.47//0.42	0.44//0.40	0.41//0.37	0.41//0.37	0.39//0.33	0.39//0.31	
5.2		Lifting speed	without load	m/s	0.53	0.53	0.53	0.45	0.45	0.45	
5.3		Lowering speed	with load	m/s	0.5	0.5	0.5	0.5	0.5	0.5	
5.3		Lowering speed	without load	m/s	0.5	0.5	0.5	0.5	0.5	0.5	
5.5		Drawbar pull	with load	N	7280	7210	7170	7030	6960	6800	
5.5		Drawbar pull	without load	N	7750	7720	7620	7650	7520	7490	
5.6		Max. drawbar pull (plus*/standard performance) ⁵	with load	N	22720 // 19170	22700 // 19150	22730 // 19170	22720 // 19150	22630 // 19050	22620 // 19030	
5.6		Max. drawbar pull (plus*/standard performance) ⁵	without load	N	22460 // 19040	22460 // 19040	22690 // 19230	22690 // 19230	22660 // 19190	22660 // 19190	
5.7		Gradeability	with load	%	12.4	11.6	11	10.5	9.6	9.2	
5.7	Gradeability	without load	%	20.3	19.7	18.8	18.8	16.3	16.3		
5.8	Max. gradeability (plus*/standard performance) ⁵	with load	%	22.1 // 15.9	21.8 // 15.5	21.6 // 15.3	21.3 // 15	21 // 14.6	20.7 // 14.2		
5.8	Max. gradeability (plus*/standard performance) ⁵	without load	%	28.5 // 28.5	28.5 // 28.5	28.4 // 28.4	28.4 // 28.4	28 // 28	28 // 28		
5.9	Acceleration time 15 m (plus*/standard performance)	with load	s	5.7 // 6.8	5.8 // 6.9	5.8 // 6.9	5.9 // 7	6.1 // 7.2	6.2 // 7.3		
5.9	Acceleration time 15 m (plus*/standard performance)	without load	s	5.2 // 5.9	5.2 // 5.9	5.3 // 6	5.3 // 6	5.5 // 6.1	5.5 // 6.1		
5.10	Service brake				Hydraulically actuated disc brake	Hydraulically actuated disc brake	Hydraulically actuated disc brake	Hydraulically actuated disc brake	Hydraulically actuated disc brake	Hydraulically actuated disc brake	
Electric engine	6.1	Drive motor, output with S2 60 min		kW	2x11	2x11	2x11	2x11	2x11	2x11	
	6.2	Lifting motor, output with S3 15%		kW	25	25	25	25	25	25	
	6.3	Battery according to DIN 43531/35/36 A, B, C, no			DIN 43536 A	DIN 43536 A	DIN 43536 A	DIN 43536 A	DIN 43536 A	DIN 43536 A	
	6.4	Battery voltage	U	V	80	80	80	80	80	80	
	6.4.1	Battery capacity	K _s	Ah	840 (-930)	840 (-930)	840 (-930)	840 (-930)	840 (-930)	840 (-930)	
	6.5	Battery weight		kg	2178	2178	2178	2178	2178	2178	
	6.6	Energy consumption EN 16796 (plus*/standard performance)		kWh/h	9.2 // 9.2	9.8 // 9.8	10.1 // 9.9	10.9 // 10.3	11.4 // 10.7	12.0 // 11.2	
	6.7	Handling rate (plus*/standard performance)		t/h	258 // 236	272 // 248	272 // 248	298 // 282	298 // 282	324 // 315	
6.8	Energy consumption at handling rate (plus*/standard performance)		kWh/h	9.7 // 8.7	10.2 // 9.1	10.3 // 9.2	10.5 // 9.6	10.9 // 10.3	11.3 // 10.8		
Misc.	10.1	Working pressure for accessory equipment		bar	250	250	250	250	250	250	
	10.2	Oil volume for accessory equipment		l	50	50	50	50	50	50	
	10.7	Sound pressure level L _{pAZ} (operator's position) ²		dB(A)	66	66	66	66	66	66	
	10.7.1	Human vibrations: acceleration in accordance with EN 13059		m/s ²	0.42	0.42	0.42	0.42	0.42	0.42	
10.8	Trailer coupling, item/DIN type			Bolt	Bolt	Bolt	Bolt	Bolt	Bolt		

¹ The specified nominal lift takes into consideration the tyre deflection and tolerances of the tyre diameter

² Without cab; different values with cab

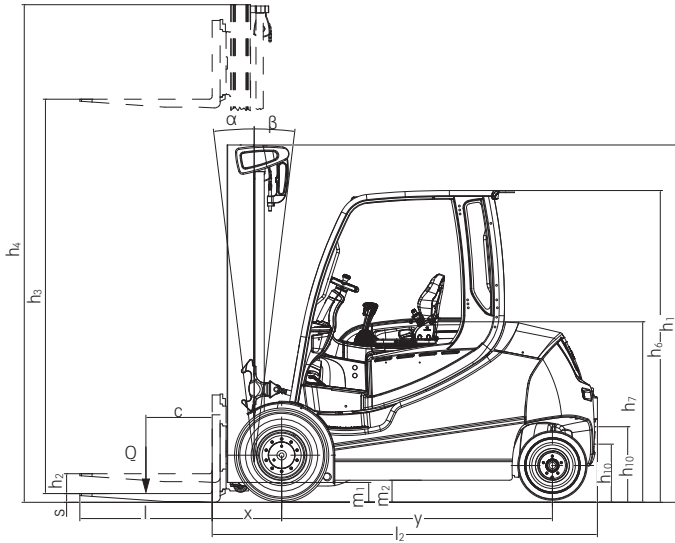
³ Fork overhang not included

⁴ For telescopic and triplex mast

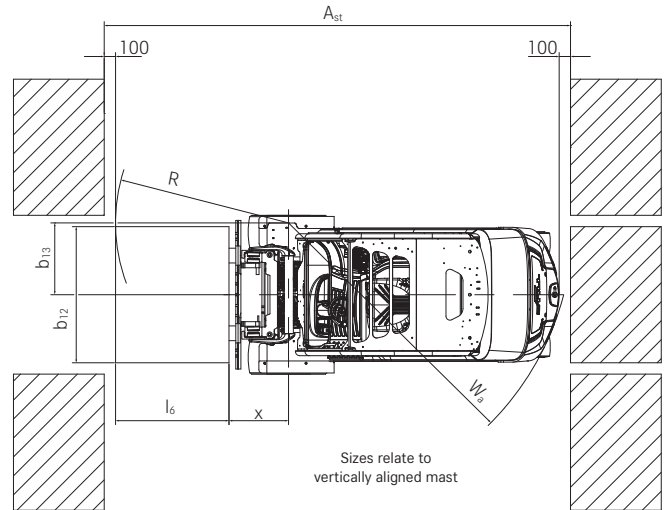
⁵ For the complete forklift truck system

*Plus performance = high performance variant

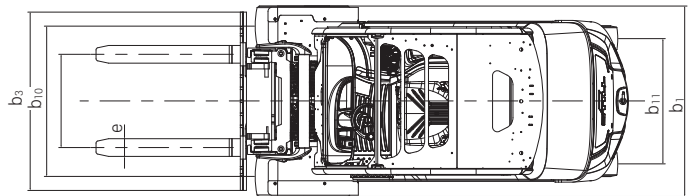
RX 60-35/50 Electric Forklift Truck
 Technical Drawings



Side view



Top view



Top view

Gradients

Maximum distance that can be driven in 60 minutes.

Example: with a load of 4,000 kg and a gradient of 7%, an RX 60-40 (standard performance) can drive a distance of 460 m up to ten times per hour.

Standard performance		Gradient	Maximum distance in m						
			RX 60-35/600	RX 60-40	RX 60-40/600	RX 60-45	RX 60-45/600	RX 60-50	RX 60-50/600
With load		13%	1193	802	620	294	280	269	255
		9%	3396	2754	2520	2234	1850	1680	1545
		7%	5520	4600	4320	3563	2910	2410	2150
		5%	7535	6300	6189	5850	5795	5736	5449
Without load		23%	328	328	311	311	276	276	259
		20%	1250	1250	1155	1155	487	487	411
		15%	2779	2779	2560	2560	2107	2107	1795
		10%	7402	7402	6664	6664	5374	5374	4953
		5%	14384	14384	14000	14000	13773	13773	12913
*Plus performance		Gradient	Maximum distance in m						
			RX 60-35/600	RX 60-40	RX 60-40/600	RX 60-45	RX 60-45/600	RX 60-50	RX 60-50/600
With load		13%	1330	869	429	409	405	380	282
		9%	4390	3214	2987	2850	2320	2158	1789
		7%	7420	6120	5136	4900	4212	3922	3483
		5%	10901	10780	10639	10150	8130	7890	7875
Without load		23%	407	407	415	415	380	380	340
		20%	1982	1982	980	980	515	515	442
		15%	4363	4363	3800	3800	2574	2574	1896
		10%	9812	9812	9333	9333	7400	7400	6800
		5%	14384	14384	14000	14000	13773	13773	12913

Dry rough concrete = coefficient of friction 0.80

Battery: standard as per specification sheet

Speed is variable

*Plus performance = high performance variant

RX 60-35/50 Electric Forklift Truck
Detailed Photos



Full cab for outdoor use in all weathers



Optimum availability due to fast and safe battery change



Slim mast ensures excellent view of the forks and extremely high safety standards



Optional air conditioning ensures a pleasant atmosphere in the workplace



Fatigue-free work thanks to the spacious driver's workplace



Telescopic mast for outstanding visibility ahead



High level of safety thanks to large, non-slip steps for easy entry

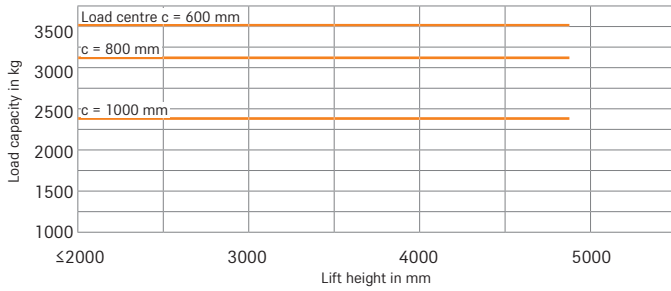


Safe, intuitive operation with the STILL Easy Control display and control module

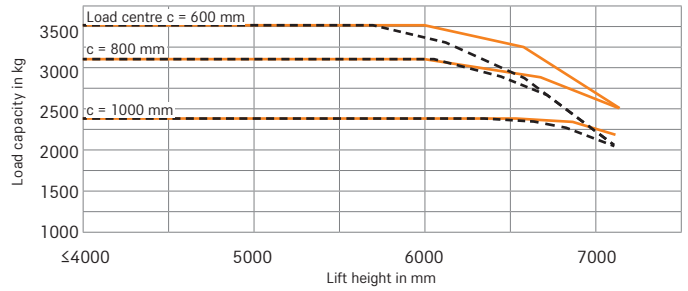
RX 60-35/50 Electric Forklift Truck

Basic Load Capacities

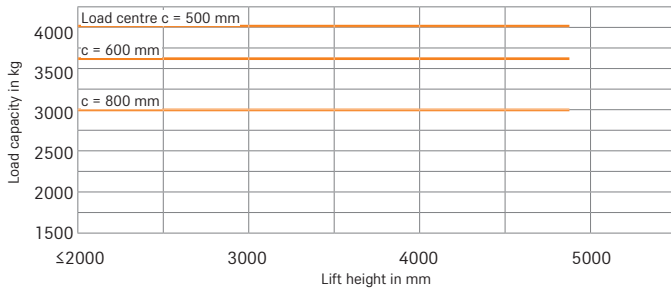
RX 60-35/600 Telescopic mast/single SE tyres



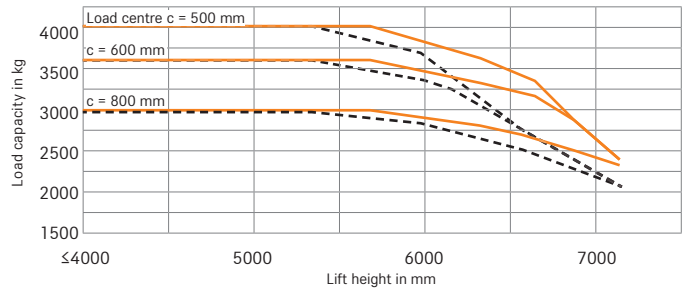
RX 60-35/600 Triplex mast/single SE tyres



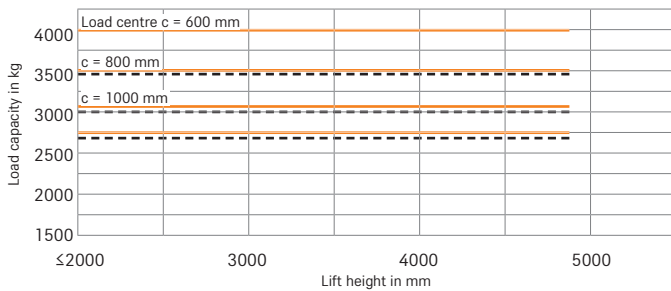
RX 60-40 Telescopic mast/single SE tyres



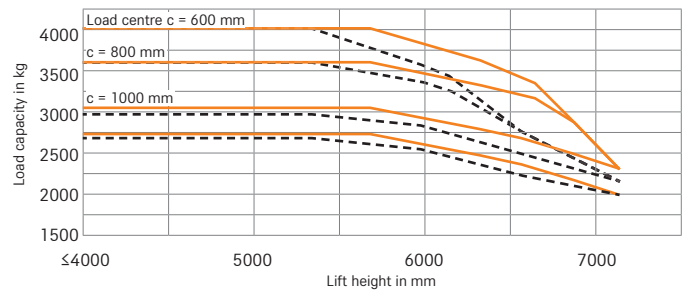
RX 60-40 Triplex mast/single SE tyres



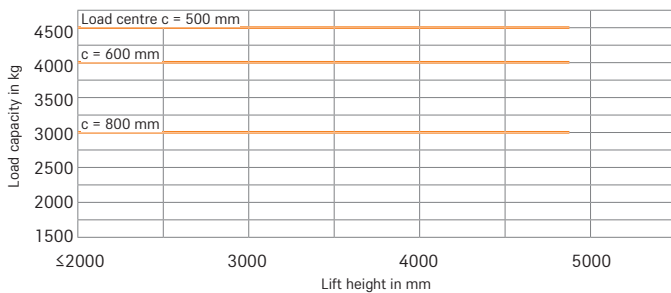
RX 60-40/600 Telescopic mast/single SE tyres



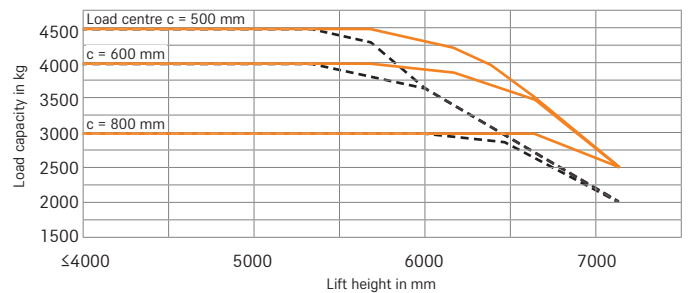
RX 60-40/600 Triplex mast/single SE tyres



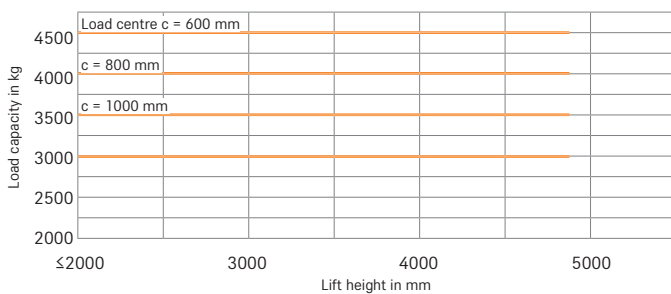
RX 60-45 Telescopic mast/single SE tyres



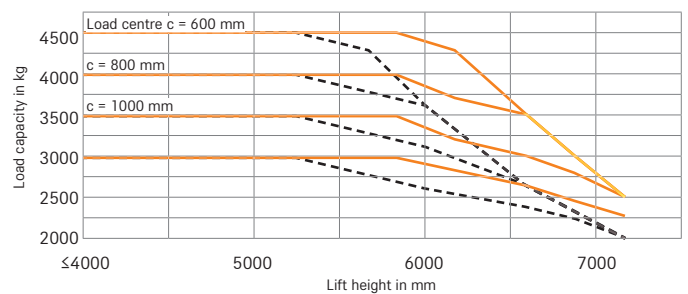
RX 60-45 Triplex mast/single SE tyres



RX 60-45/600 Telescopic mast/single SE tyres



RX 60-45/600 Triplex mast/single SE tyres

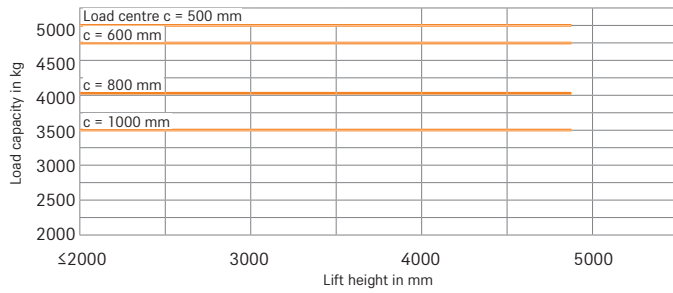


— with standard forks - - - with integrated side shifter and standard forks
 The listed values may vary depending on the truck's features.

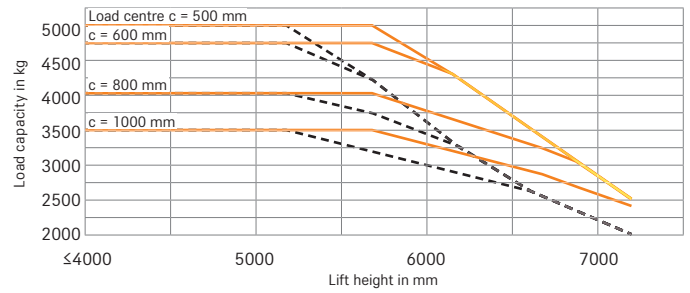
RX 60-35/50 Electric Forklift Truck

Basic Load Capacities

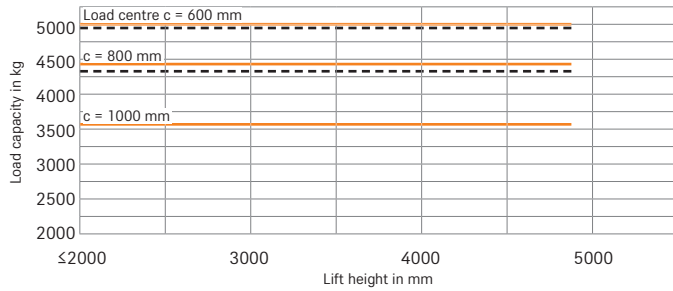
RX 60-50 Telescopic mast/single SE tyres



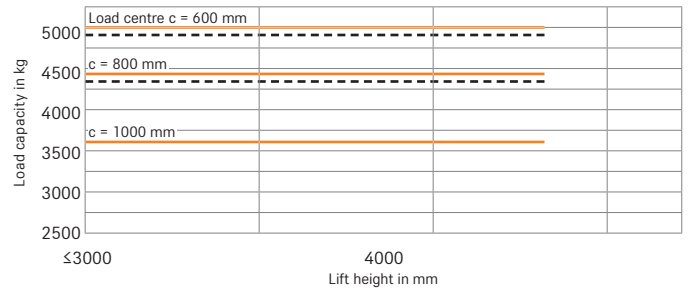
RX 60-50 Triplex mast/single SE tyres



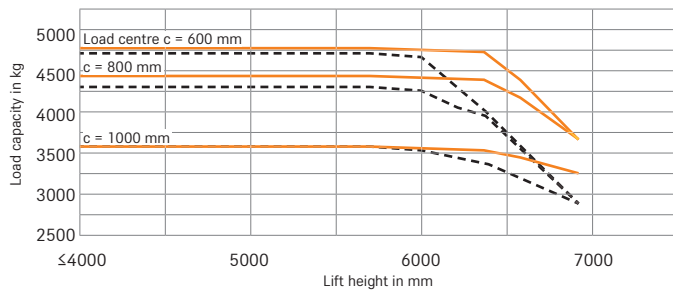
RX 60-50/600 Telescopic mast/single SE tyres



RX 60-50/600 Triplex mast/single SE tyres up to height of 2350 mm



RX 60-50/600 Triplex mast/single SE tyres up to height of 2400 mm



— with standard forks - - - with integrated side shifter and standard forks
 The listed values may vary depending on the truck's features.

RX 60-35/50 Electric Forklift Truck
Mast Tables



			Telescopic mast								Triplex mast									
			h ₃	h ₁	h ₂	h ₄	h ₄	h ₄	α/β	mm	mm	mm	mm	mm	mm	mm	mm	mm	mm	mm
RX 60-35/600	Nominal lift	h ₃	mm	2980	3180	3480	3680	4080	4480	4880	4030	4330	4630	5080	5380	5980	6580	7180		
	Height	h ₁	mm	2300	2400	2550	2650	2850	3050	3250	2150	2250	2350	2500	2600	2800	3000	3200		
	Free lift 4 roller fork carriage	h ₂	mm				160				1390	1490	1590	1740	1840	2040	2240	2440		
	Height, mast raised, 4 roller fork carriage	h ₄	mm	3762	3962	4262	4462	4862	5262	5662	4835	5135	5435	5885	6185	6785	7385	7985		
	Free lift 6 roller fork carriage		mm				160				1238	1338	1438	1588	1688	1888	2088	2288		
	Height, mast raised, 6 roller fork carriage	h ₄	mm	3987	4187	4487	4687	5087	5487	5887	4987	5287	5587	6037	6337	6937	7537	8137		
	Tilt angle	forward/backward	α/β	°	7/7								7/7							
	Fork lock-in position centre-centre (fork carriage 1200 mm)		mm	191/368/572/673/876/978								191/368/572/673/876/978								
	Fork lock-in position centre-centre (fork carriage 1310 mm)		mm	191/368/572/673/978/1080								191/368/470/572/673/978/1080								
	Fork lock-in position centre-centre (fork carriage 1410 mm)		mm	191/368/572/673/876/1080/1181								191/368/470/572/673/876/1080/1181								
	Tyres	rear		200/75-9 (21x8-9)								200/75-9 (21x8-9)								
	Track	front/rear	b ₁₀ /b ₁₁	mm	1095/920				1104/920				1095/920				1104/920			
Tyres	front		250/70-15								250/70-15									
Maximum width	b ₁	mm	1320								1320									
RX 60-40	Nominal lift	h ₃	mm	2980	3180	3480	3680	4080	4480	4880	4030	4330	4630	5080	5380	5980	6580	7180		
	Height	h ₁	mm	2300	2400	2550	2650	2850	3050	3250	2150	2250	2350	2500	2600	2800	3000	3200		
	Free lift 4 roller fork carriage	h ₂	mm				160				1390	1490	1590	1740	1840	2040	2240	2440		
	Height, mast raised, 4 roller fork carriage	h ₄	mm	3762	3962	4262	4462	4862	5262	5662	4835	5135	5435	5885	6185	6785	7385	7985		
	Free lift 6 roller fork carriage		mm				160				1238	1338	1438	1588	1688	1888	2088	2288		
	Height, mast raised, 6 roller fork carriage	h ₄	mm	3987	4187	4487	4687	5087	5487	5887	4987	5287	5587	6037	6337	6937	7537	8137		
	Tilt angle	forward/backward	α/β	°	7/7								7/7							
	Fork lock-in position centre-centre (fork carriage 1200 mm)		mm	191/368/572/673/876/978								191/368/470/572/673/876/978								
	Fork lock-in position centre-centre (fork carriage 1310 mm)		mm	191/368/572/673/978/1080								191/368/470/572/673/978/1080								
	Fork lock-in position centre-centre (fork carriage 1410 mm)		mm	191/368/572/673/876/1080/1181								191/368/470/572/673/876/1080/1181								
	Tyres	rear		200/75-9 (21x8-9)								200/75-9 (21x8-9)								
	Track	front/rear	b ₁₀ /b ₁₁	mm	1095/920				1104/920				1104/920							
Tyres	front		200/75-9 (21x8-9)								355/50-15									
Maximum width	b ₁	mm	1320								1399									
RX 60-45	Nominal lift	h ₃	mm	2980	3180	3480	3680	4080	4480	4880	4030	4330	4630	5080	5380	5980	6580	7180		
	Height	h ₁	mm	2300	2400	2550	2650	2850	3050	3250	2150	2250	2350	2500	2600	2800	3000	3200		
	Free lift 4 roller fork carriage	h ₂	mm				160				1390	1490	1590	1740	1840	2040	2240	2440		
	Height, mast raised, 4 roller fork carriage	h ₄	mm	3762	3962	4262	4462	4862	5262	5662	4835	5135	5435	5885	6185	6785	7385	7985		
	Free lift 6 roller fork carriage		mm				160				1238	1338	1438	1588	1688	1888	2088	2288		
	Height, mast raised, 6 roller fork carriage	h ₄	mm	3987	4187	4487	4687	5087	5487	5887	4987	5287	5587	6037	6337	6937	7537	8137		
	Tilt angle	forward/backward	α/β	°	7/7								7/7							
	Fork lock-in position centre-centre (fork carriage 1200 mm)		mm	191/368/572/673/876/978								191/368/470/572/673/876/978								
	Fork lock-in position centre-centre (fork carriage 1310 mm)		mm	191/368/572/673/978/1080								191/368/470/572/673/978/1080								
	Fork lock-in position centre-centre (fork carriage 1410 mm)		mm	191/368/572/673/876/1080/1181								191/368/470/572/673/876/1080/1181								
	Tyres	rear		200/75-9 (21x8-9)								200/75-9 (21x8-9)								
	Track	front/rear	b ₁₀ /b ₁₁	mm	1104/920				1104/920				1104/920							
Tyres	front		355/50-15								355/50-15									
Maximum width	b ₁	mm	1399								1399									
RX 60-50/600	Nominal lift	h ₃	mm	2780	2980	3280	3480	3880	4280	4680	3730	4030	4330	4780	5080	5680	6280	6880		
	Height	h ₁	mm	2300	2400	2550	2650	2850	3050	3250	2150	2250	2350	2500	2600	2800	3000	3200		
	Free lift 6 roller fork carriage	h ₂	mm				160				1138	1238	1338	1488	1588	1788	1988	2188		
	Height, mast raised, 6 roller fork carriage	h ₄	mm	3887	4087	4387	4587	4987	5387	5787	4787	5087	5387	5837	6137	6737	7337	7937		
	Tilt angle	forward/backward	α/β	°	7/5								7/5							
	Fork lock-in position centre-centre (fork carriage 1310 mm)		mm	191/368/572/673/978/1080								191/368/470/572/673/978/1080								
	Fork lock-in position centre-centre (fork carriage 1410 mm)		mm	191/368/572/673/876/1080/1181								191/368/470/572/673/876/1080/1181								
	Tyres	rear		225/75-10 (23x9-10)								225/75-10 (23x9-10)								
	Track	front/rear	b ₁₀ /b ₁₁	mm	1104/932				1104/932				1104/932							
	Tyres	front		355/50-15								355/50-15								
	Maximum width	b ₁	mm	1399								1399								

RX 60-35/50 Electric Forklift Truck

Everything. Except emissions.

Exceptional performance with handling performance at the highest level in its class

Optimal availability: highest range with one battery charge

Ideal workstation: spacious cabin with STILL Easy Control on-board computer



Make the most of the smart performance of an exceptional accelerator. Right from the start the RX 60-35/600 to RX 60-50/600 will win over any operator with its perfect balance of power, ergonomics, manoeuvrability and energy consumption. The 20 km/h intralogistics powerhouse is a true wonder in this segment in terms of the range per battery charge. At the same time, the RX 60-35/600 to RX 60-50/600 impresses with a handling performance at the highest level in the weight class of up to 5.0 tonnes. Moreover, choose our STILL lithium-ion technology and you can even handle three-shift operations without the need for a replacement battery.

Whatever your needs, the RX 60 can be operated intuitively and precisely in any situation. And thanks to the quick-start mode, this nimble truck is ready to start work as soon as you sit down in the spacious driver's cab. Here, you will also find yet another outstanding feature – the STILL Easy Control on-board computer. This tool gives you direct access to key performance functions and provides a constant overview of all the relevant vehicle information. Go electric with a forklift truck that delivers the very best performance every second and in every application.

The 'Simply Efficient' factors: Performance attributes as a measure of economic efficiency



Simply easy

- Intuitive handling: standard, easy-to-use operating concept across the whole RX product line
- Efficiency-enhancing: easy, entry into a highly ergonomic driver's cab
- STILL Easy Control on-board computer: all relevant information at a glance and performance functions just a click away
- Ultra-fast: easy-to-operate lateral battery change



Simply powerful

- Intralogistics powerhouse: handling performance at the highest level in its class
- Performance boost: sprint mode for peak performance at the touch of a button
- Optimum energy efficiency: exceptionally long range with each battery charge
- Lift and accelerate faster than ever: available as a high performance variant with extra-powerful drive and lift motors
- Intelligent support: traction control and other assistance functions
- Ready at all times: optional STILL lithium-ion technology for maximum availability



Simply safe

- Safe and precise handling: high-precision hydraulics and agile driving dynamics
- Safe entry: large handle, anti-slip rubber mat and wide step
- Optimal panoramic view: slim mast and extra-large windows
- Systematic safety: optional pre-shift check on the display to help with the daily safety inspection
- Safety for every application: wide range of additional equipment options – from a direction indicator on the display to the Safety Light 4Plus safety lighting, as well as Curve Speed Control for automatic speed reduction when cornering



Simply flexible

- Flexible control options: multi-lever, mini-lever, Fingertip or Joystick 4Plus
- Adjustable performance dynamics: parameters such as driving and lifting speed can be adjusted to personal preferences at the touch of a button
- Operating power tailored to your specifications: wide variety of equipment options for every application



Simply connected

- Optimum networking: optional interface for integration into fleet management software such as STILL neXXt fleet
- Controlled use: optional access control protects against incorrect operation

RX 60-35/50 Electric Forklift Truck

Equipment Variants



	RX 60-35/600 RX60-40	RX60-40/600 RX60-45 RX60-45/600 RX60-50	RX 60-50/600	
Operator's cab	Weather-protected, canvas or full cab with interior lighting	○	○	○
	Operator's cab with 180° door	○	○	○
	Lowered cab	○	○	○
	Raised operator's position for a better view of the load	○	○	○
	Tinted front and rear windscreen, roof window made of laminated safety glass or Makrolon, plus windscreen wiper/washer system	○	○	○
	Non-splintering cabin glazing and lighting	○	○	○
	Panorama roof or adjustable roof window for instant cabin ventilation	○	○	○
	Front and upper sun blind	○	○	○
	Storage box above the counterweight	○	○	○
	Built-in storage and cup holder	●	●	●
	Dual-pedal control	○	○	○
	Splash-proof operating unit featuring display, function buttons and menu navigation	●	●	●
	Pad with clipboard (removable)	○	○	○
	MSG 65 Grammer seat with leatherette cover	●	●	●
	Seat with textile cover, air suspension, with lumbar support, adjustable back extension, heated seat, document pocket on the backrest	○	○	○
	Swivel seat which can be rotated to the right or horizontal spring plate for operator's seat to minimise human vibrations	○	○	○
	Grab handle on front and back of protective roof	●	●	●
	Grab handle on back of protective roof with horn	○	○	○
	Radio/MP3 player with USB connection and Bluetooth	○	○	○
	Clamp mount for mobile phone, mounted adjustably on the overhead guard bar	○	○	○
High-performance 2000 W electric heating incl. defrosting blaster	○	○	○	
Air conditioning	○	○	○	
Mast	Telescopic or triplex free view mast	○	○	○
	Load backrest	○	○	○
	Hydraulic accumulator in the lifting cylinder to attenuate pressure peaks in the hydraulic system	○	○	●
	Bellows protect the tilt cylinder from dust and moisture	○	○	○
	Vertical positioning of the mast at the push of a button, tilt angle display and cushioned lowering in the tilt end positions	○	○	○
	Fork wear protection	○	○	○
Lift height sensor and display, lift height pre-selection, lift stop, electrical reach damping and end cushioning	○	○	○	
Tyres	Single tyres, superelastic, SIT system	●	●	●
	Single tyres, superelastic, natural coloured, SIT system	○	○	○
	Twin tyres, superelastic, SIT system, black or natural colours	○	○	○
Hydraulics	Multi-lever operation	●	●	●
	Armrest with mini-levers, Fingertip or Joystick 4Plus	○	○	○
	Cold store variant, hydraulic oil suitable for low temperature ranges	○	○	○
	Shake function for easy tipping of containers	○	○	○
Drives	3 fixed and 2 freely configurable driving programs, Blue-Q energy saving mode, sprint mode for optimal handling performance at the push of a button	●	●	●
	High-performance design 'Plus'	○	○	○
	Display showing energy consumption and remaining driving time based on current charge	●	●	●
	Lithium-ion battery exchangeable 1:1	●	●	●
On-board charger or quick charging access	○	○	○	
Brake	Automatic parking brake	●	●	●
Safety	Protective grille roof	○	○	○
	EasyBelt restraint system for quick and safe fastening and unfastening	○	○	○
	Sauermann restraint system model Duo HRS-E or IWS restraint system with strap opening on the left	○	○	○
	Headlights and LED lighting performance	○	○	○
	LED floodlights on the mast	○	○	○
	STILL Safety Light 4Plus warning device	○	○	○
	Safety Zone Light: Warning light bars to the left and right of the truck	○	○	○
	Adjustable speed limiter	○	○	○
	Front, rear and all-round view camera systems	○	○	○
	Curve Speed Control	●	●	●
	Load measuring	○	○	○
	Panoramic mirror	○	○	○
	Ceiling sensor: Speed regulation for indoor and outdoor areas	○	○	○
	Speed reduction when fork carriage is raised	○	○	○
	Dynamic Load Control 1, Dynamic Load Control 2	○	○	○
	FleetManager: Access authorisation, shock detection, reports	○	○	○
	Overload detection	○	○	○
	Pre-shift check in the display: Guided safety check before the truck can be operated	○	○	○
	Intelligent seat belt control with logic check	●	●	●
	Rockinger trailer coupling	○	○	○
Road traffic version	○	○	○	
Explosion-proof variant	○	○	○	

● Standard ○ Option — Not available



STILL GmbH
Berzeliusstr. 10
22113 Hamburg
Germany
Tel.: +49 40 73 39 20 00
Fax: +49 40 73 39 20 01
info@still.de

**For further information please visit
www.still.eu**

STILL is certified in the following areas: Quality management, occupational safety, environmental protection and energy management.



first in intralogistics