

# SP-Series, Lightweight Hydraulic Punch

▼ Shown: SP-35S



- 12,7 mm thick capacity through mild steel
- Round, oblong and square punches and dies are available to solve your punching applications
- Long life Enerpac single-acting, spring return design
- Durable steel case keeps tools and dies together and provides for easy carrying and storage
- CR-400 coupler included.

## Much Faster than Drilling



### Tool Kit SPK-10

Included with all 35 Ton punches, this tool kit is used to remove and install the punch into the head. Can be ordered as a replacement under model number **SPK-10**.



### Ordering Information

The 35 ton hydraulic Punch may be ordered by itself or as a set, including a pump. A punch or die may also be ordered separately or as a matched set. Please refer to the Quick Selection Chart information on top of the next page.

### ▼ STANDARD PUNCHES AND DIES SELECTION CHART

Hole Shape	Imperial <sup>1)</sup> (inch)		Metric <sup>1)</sup> (mm)	
	Hole Size	Bolt Size	Hole Size	Bolt Size
●	0,31	1/4	7,9	–
●	0,38	5/16	9,5	M8
●	0,44	3/8	11,1	M10
●	0,53	7/16	13,5	M12
●	0,56	1/2	14,3	–
●	0,69	5/8	17,5	M16
●	0,78	–	19,8	M18
●	0,81	3/4	20,6	–
■	0,31	1/4	7,9	–
■	0,38	5/16	9,5	M8
■	0,44	3/8	11,1	M10
■	0,50	7/16	12,7	M12
■	.31 x .75	1/4	7,9 x 19	–
■	.38 x .75	5/16	9,5 x 19	M8
■	.44 x .75	3/8	11,1 x 19	M10
■	.50 x .75	7/16	12,7 x 19	M12


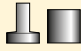

<sup>1)</sup> Material thickness should not exceed hole diameter

▼ SP-Series, Lightweight Hydraulic Punch – Much Faster than Drilling.



# Single-Acting, Spring Return Hydraulic Punch

## ▼ QUICK SELECTION CHART

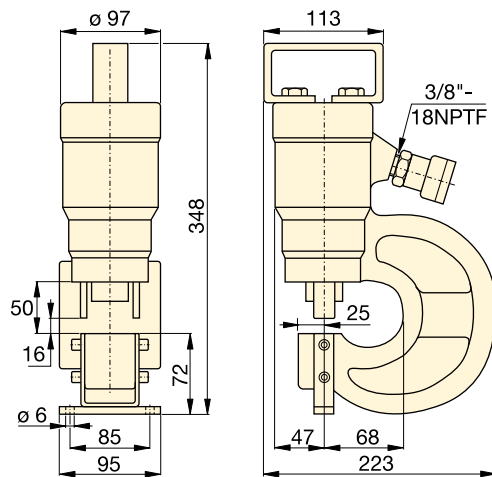
* 	Punch & Die Set 	Included				Model Number	 (kg)
		Pump	Hose	Gauge	Gauge Adaptor		
SP-35	Standard**	P-392	HC-7206	GP-10S	GA-2	<b>STP-35H</b>	25
SP-35	Standard**	PATG-1102N	HC-7206	GP-10S	GA-2	<b>STP-35A</b>	29
SP-35	-	-	-	-	-	<b>SP-35</b>	16
SP-35	Standard**	-	-	-	-	<b>SP-35S</b>	18
SP-35	Standard**	PUD-1100E	HC-7206	-	-	<b>SP-35SPE</b>	29
SP-35	Metric***	-	-	-	-	<b>MSP-351</b>	21
SP-35	Metric***	PUD-1100E	HC-7206	-	-	<b>MSP-351PE</b>	32

\* Punch oil capacity: 76 cm<sup>3</sup>

Includes the following punch and die sets:

\*\* SPD-438, SPD-688, SPD-563 and SPD-813

\*\*\* SPD-375, SPD-531, SPD-438 and SPD-688



## MSP SP STP Series



Capacity:

**35 ton**

Hole Sizes:

**7,9 - 20,6 mm**

Maximum Operating Pressure:

**700 bar**



### CAUTION!

The chart below is for reference only! Maximum allowable material thickness to be punched varies with set wear.




### CAUTION!

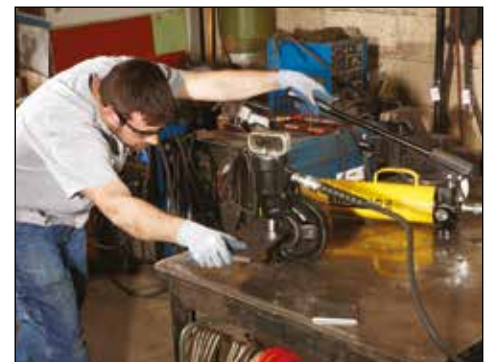
Material thickness should not exceed hole diameter.

### Steel Qualities (see table):

- 1) Mild A-7
- 2) Boiler Plate
- 3) Structural A-36
- 4) Struct Corten (ASTM A242)
- 5) Cold Rolled C-1018
- 6) Hot Rolled C-1050
- 7) Hot Rolled C-1095
- 8) Hot Rolled C-1095 Annealed
- 9) Stainless Annealed
- 10) Stainless 304 Hot Rolled
- 11) Stainless 316 Cold Rolled

Model Nr. Standard Punch & Die Set  	Maximum allowable material thickness to be punched (mm) Material thickness should not exceed hole diameter										
	1)	2)	3)	4)	5)	6)	7)	8)	9)	10)	11)
<b>SPD-313</b>	7,9	7,9	6,4	6,4	6,4	6,4	3,3	4,8	6,4	6,4	6,4
<b>SPD-375</b>	9,7	9,7	7,9	7,9	7,9	7,9	4,8	6,4	7,9	7,9	7,9
<b>SPD-438</b>	11,2	11,2	9,7	9,7	9,7	7,9	4,8	7,9	7,9	7,9	7,9
<b>SPD-531</b>	12,7	12,7	11,2	11,2	11,2	9,7	6,4	7,9	9,7	9,7	9,7
<b>SPD-563</b>	12,7	12,7	12,7	11,2	12,7	11,2	6,4	9,7	11,2	11,2	11,2
<b>SPD-688</b>	12,7	12,7	12,7	11,2	12,7	10,2	6,4	7,9	10,2	10,2	10,2
<b>SPD-781</b>	12,7	12,7	12,7	11,2	12,7	9,7	6,4	7,9	9,7	9,9	9,7
<b>SPD-813</b>	12,7	12,7	12,7	11,2	12,7	7,9	4,8	7,9	7,9	7,9	7,9
<b>SPD-458</b>	7,9	7,9	6,4	6,4	6,4	6,4	3,3	4,8	6,4	6,4	6,4
<b>SPD-549</b>	9,7	9,7	7,9	7,9	7,9	7,9	4,8	6,4	7,9	7,9	7,9
<b>SPD-639</b>	11,2	11,2	9,7	9,7	9,7	7,9	4,8	7,9	7,9	7,9	7,9
<b>SPD-728</b>	12,7	12,7	11,2	11,2	11,2	9,7	6,4	7,9	9,7	9,7	8,6
<b>SPD-106</b>	7,9	7,9	6,4	6,4	6,4	6,4	3,3	4,8	6,4	6,4	6,4
<b>SPD-125</b>	9,7	9,7	7,9	7,9	7,9	7,9	4,8	6,4	7,9	7,9	7,9
<b>SPD-188</b>	11,2	11,2	9,7	9,7	9,7	7,9	4,8	7,9	7,9	7,9	7,9
<b>SPD-250</b>	12,7	12,7	11,2	11,2	11,2	9,7	6,4	7,9	9,7	9,7	9,7

▼ The hydraulic punch cuts the time spent forming holes.



# SP-Series, 50 Ton Hydraulic Punch

▼ Shown: SP-50100



- Available as a complete set including electric pump and hoses
- Double-acting cylinder design for fast cycle times
- Punch and die changeover tools included
- Lifting bracket included
- Adjustable power stripper prevents movement of the metal during stripping
- CR-400 female couplers included.

## Cuts the Time Spent Forming Holes



### Depth Stop

For simplified repetitive punching applications an adjustable Depth Stop is available. Order model number: **SP-110**.



### Foot Mounting Kit

A foot mounting kit for easy mounting of the 50 ton punch to workbench or fixture is available. Order model number: **SP-120**.



### Ordering Information

The 50-ton Hydraulic Punch may be ordered by itself or as a set with an electric pump. A punch and die may be ordered as a matched set.

Please refer to the selection chart information.




◀ Save time using the 50-ton Enerpac Punch.

▼ Shown below is the 50 ton punch with SP-120 and SP-110 assembled.



# 50 Ton Double-Acting Hydraulic Punch

## ▼ QUICK SELECTION CHART PUNCH SETS

Included				Set Model Number	 (kg)
Model Number Punch*	Punch & Die Sets	Electric Pump	Hydraulic Hose (2x)		
SP-50	All **	-	-	SP-50100	116
SP-50	All **	ZE4410SE	HC-7206	SP-5000E	174

\* Punch Oil Capacity:

Advance: 278 cm<sup>3</sup>

Retract: 229 cm<sup>3</sup>

\*\* All standard sets from chart below.

## SP Series



Capacity:

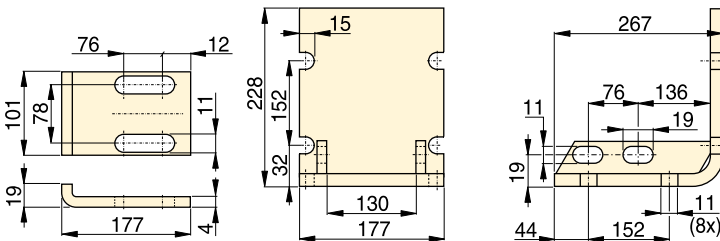
**50 ton (490 kN)**

Hole Sizes:

**13,5 - 26,2 mm**

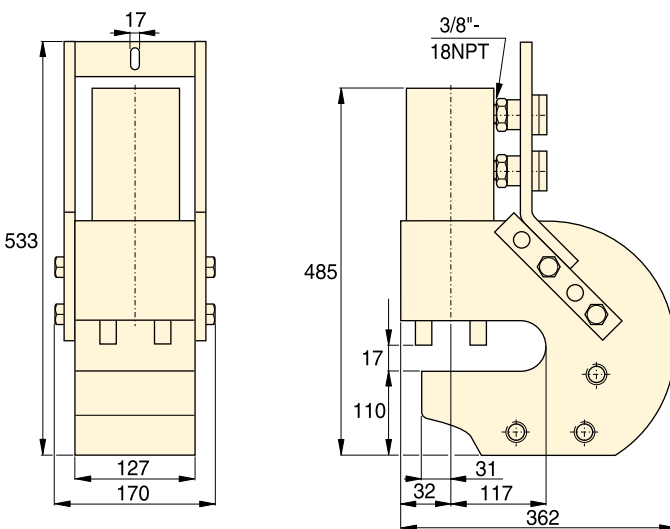
Maximum Operating Pressure:

**700 bar**



SP-110

SP-120



SP-50



### CAUTION!

Material thickness should not exceed hole diameter.




### CAUTION!

Chart below is for reference only! Maximum allowable material thickness to be punched varies with set wear.

### Steel Qualities (see table below):

- 1) Mild A-7
- 2) Boiler Plate
- 3) Structural A-36
- 4) Struct Corten (ASTM A242)
- 5) Cold Rolled C-1018
- 6) Hot Rolled C-1050
- 7) Hot Rolled C-1095
- 8) Hot Rolled C-1095 Annealed
- 9) Stainless Annealed
- 10) Stainless 304 Hot Rolled
- 11) Stainless 316 Cold Rolled

## ▼ STANDARD PUNCH AND DIE SELECTION CHART

Hole Shape	Hole Size (mm)	Bolt Size (mm)	Model Numbers Standard Punch and Die Set 	Maximum Allowable Material Thickness To Be Punched (mm)										
				1)	2)	3)	4)	5)	6)	7)	8)	9)	10)	11)
●	13,5	M12	SP-150	13,5	13,5	13,5	13,5	13,5	12,4	8,1	10,2	12,4	12,4	12,4
●	16,7	M16	SP-170	-	-	-	-	-	13,0	8,1	10,2	13,0	13,0	13,0
●	19,8	M18	SP-190	-	-	-	-	-	12,4	8,1	10,2	12,4	12,7	12,4
●	23,1	M20	SP-121	14,2	14,2	14,2	12,7	14,2	8,9	5,6	8,9	8,9	8,9	8,9
●	26,2	M24	SP-123	14,2	14,2	14,2	11,2	14,2	7,9	4,8	7,9	7,9	7,9	7,9