

Technical sheet

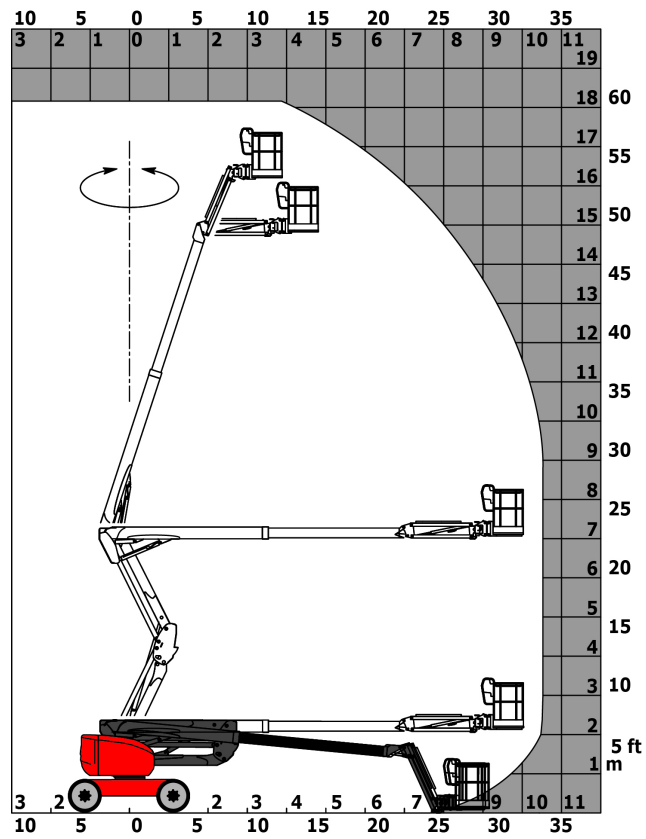
180 ATJ

Aerial Work Platforms Diesel Articulated Jib

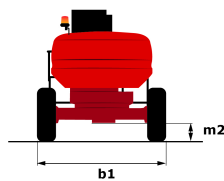
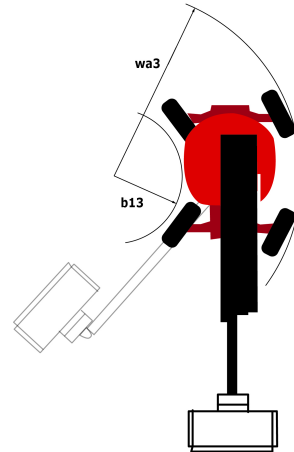
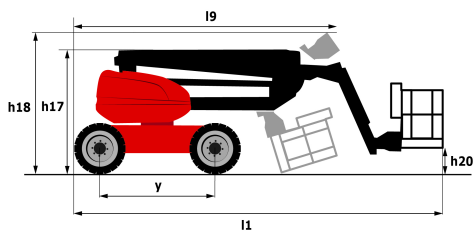


Capacities	Metric
Working height	18.19 m
Platform height	16.19 m
Horizontal outreach	10.51 m
Overhang	7.55 m
Pendular arm rotation (top/bottom)	65 ° / -59.50 °
Platform capacity	230 kg
Turret rotation	350 °
Platform rotation (right/left)	90 ° / 90 °
Number of people (inside/outside)	2 / 2
Weight and dimensions	
2.1 - Platform weight*	7430 kg
2.2 - Platform dimension (L x l)	1.8 x 0.8 m
b1 - Overall width	2.32 m
l1 - Overall length	7.79 m
l9 - Overall length (folded)	5.56 m
h17 - Overall height	2.47 m
h18 - Overall height (folded)	2.56 m
h20 - Floor height (access)	0.40 m
a7 - Counterweight offset (turret at 90°)	0.22 m
b13 - Inner turning radius	1.38 m
wa3 - Outer turning radius	3.75 m
m2 - Ground clearance at center of frame	0.40 m
Performances	
Travel speed	5 km/h
Working speed	1 km/h
Gradeability	45 %
Permissible leveling	5 °
Tires	
Type of tires	Foam-filled
Drive wheels (front/rear)	2 / 2
Steering wheels (front/rear)	2 / 2
Braking wheels (front/rear)	0 / 2
Engine	
I.C. engine	Kubota D1105-E4B Stage 5
I.C. Engine power rating	24.80 hp / 18.50 kW
Miscellaneous	
Ground pressure	10 daN/cm ²
Maximum available hydraulic pressure	340 bar
Capacity of hydraulic tank	54 l
Capacity of fuel tank	52 l

* varies according to options and standards of the country to which the machine is delivered



Dimensional drawing



Equipment

Standard

Stop & Go

Galvanized basket 1,800 mm

220V predisposition in the platform

4 simultaneous movements

4 wheel steer with crab mode

4 wheel drive

Active oscillating front axle

Audible alarm and illuminated indicator lamp (leveling, overload, lowering)

Backup electrical pump

CAN bus technology

Operator presence pedal

Differential locking on rear axle

Emergency stop button in platform and on frame

Rear axle with limited slip differential

Fuel gauge with low level indicator

Fully galvanized basket with demountable floor

Hour meter

Integrated diagnostic assistance

Leveling unlocking

Easy Manager

Optional

Air predisposition

Beep on every movement

Beep upon travel

Biodegradable oil

Continuous turret rotation

Highly efficient battery

Galvanized basket 2,100 mm

Key lock on fuel tank

Extreme cold oil

Onboard generator (3,5 or 5 kW)

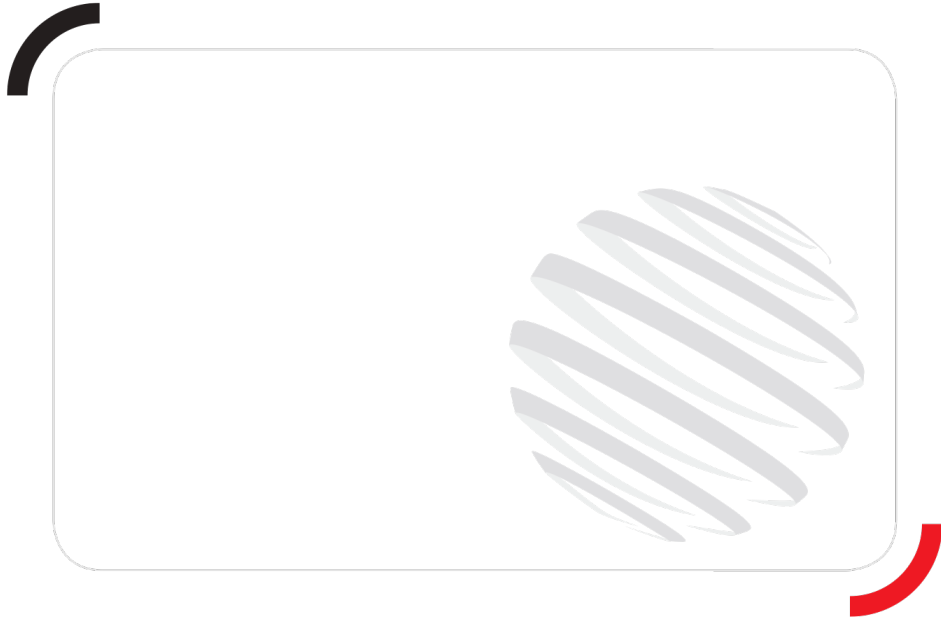
Personalized paintwork

Refinery kit

SMS : Safe Man System

Water predisposition

Working light



Siège Social
430 rue de l'Aubinière - 44150 Ancenis Cedex - France
Tel: +33(0)2 40 09 10 11 - Fax: +33 (0)2 40 09 10 97
www.manitou.com



This brochure describes versions and configuration options for Manitou products which may be fitted with different equipment. The equipment described in this brochure may be standard, optional or not available depending on version. Manitou reserves the right to change the specifications shown and described at any time and without prior warning. The manufacturer is not liable for the specifications given. For more information, contact your Manitou dealer. Non-contractual document. Product descriptions may differ from actual products. List of specifications is not comprehensive. The logos and visual identity of the company are the property of Manitou and may not be used without authorisation. All rights reserved. The photos and diagrams contained in this brochure are provided for information only.

MANITOU BF SA - Limited company with board of directors - Share capital: 39,547,824 euros - 857 802 508 RCS Nantes