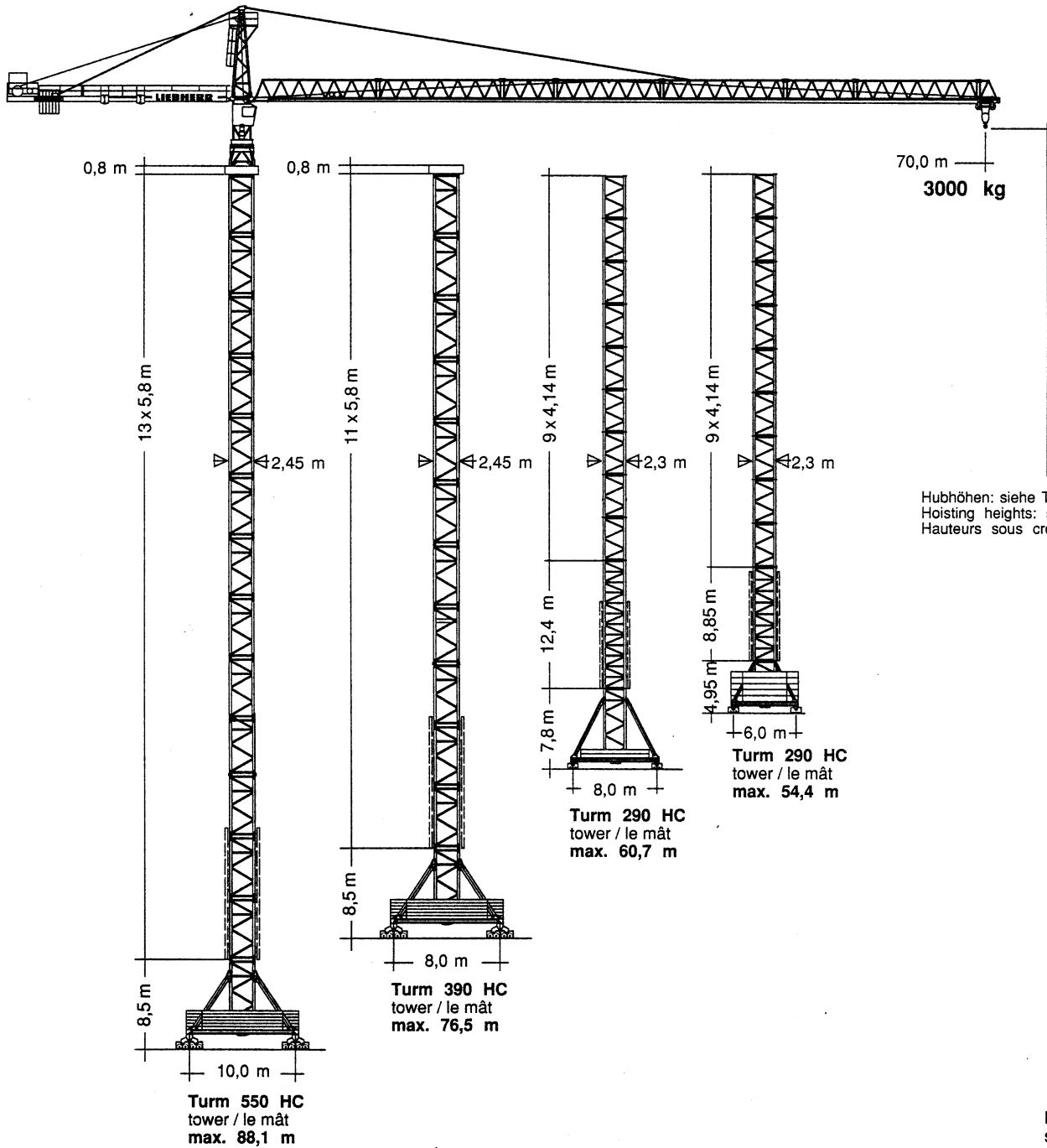
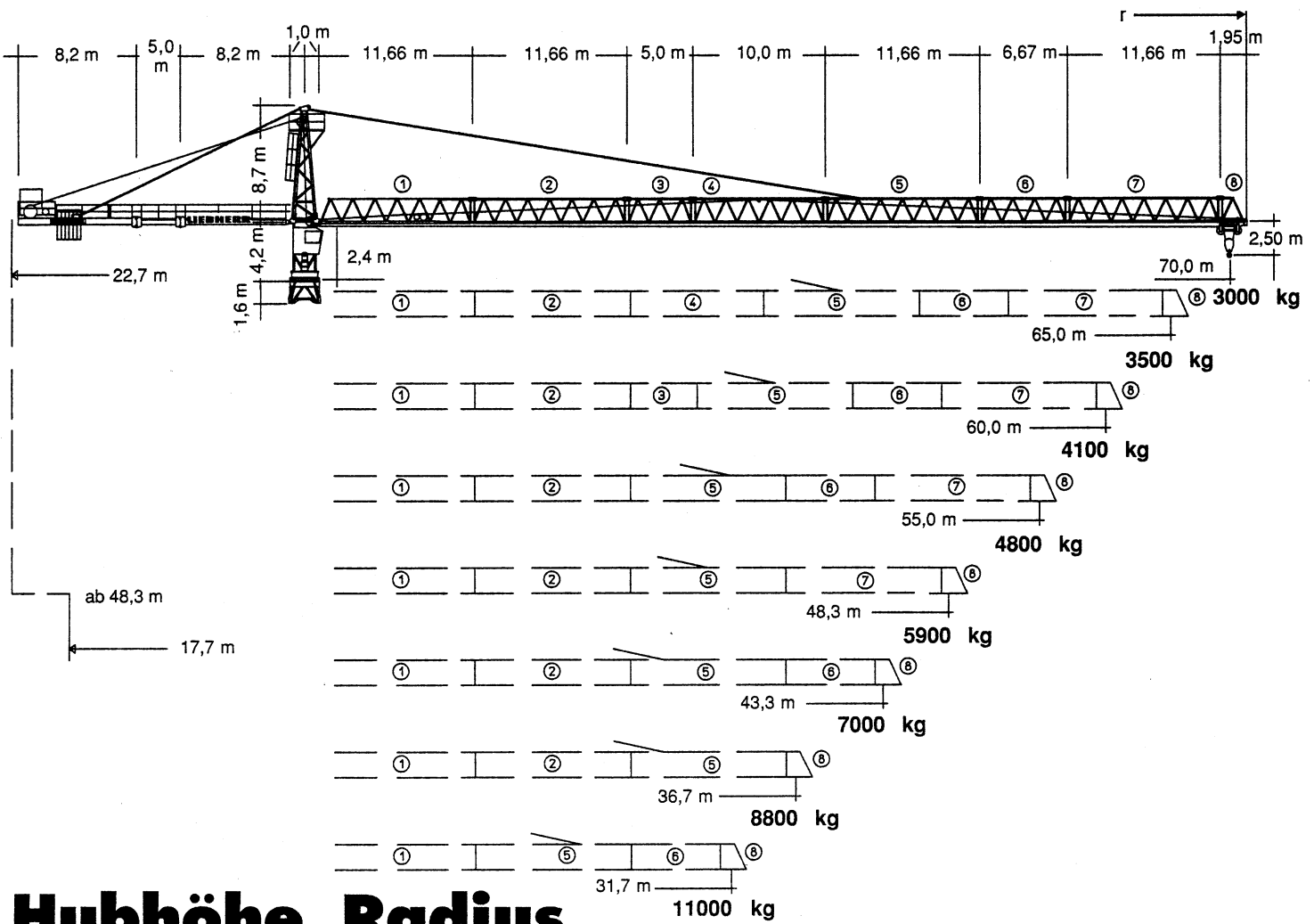


**Tower Crane  
Grue à tour**

# Turmdrehkran 290 HC



# LIEBHERR



# Hubhöhe, Radius

## Hoisting height, Radius

### Hauteur sous crochet, Rayon

| mit Turm<br>with tower<br>avec mât   | 550 HC |       | 390 HC |       | 290 HC |       |        |
|--|--------|-------|--------|-------|--------|-------|--------|
| zuzüglich<br>Turmstücke /<br>plus tower<br>sections /<br>plus éléments<br>de mât |        |       |        |       |        |       |        |
| 0  | m 4,5  | 12,7  | m 4,5  | 12,7  | m 16,0 | 23,5  |        |
| 1  | 10,3   | 18,5  | 10,3   | 18,5  | 20,1   | 27,7  |        |
| 2  | 16,1   | 24,3  | 16,1   | 24,3  | 24,3   | 31,8  |        |
| 3  | 21,9   | 30,1  | 21,9   | 30,1  | 28,4   | 35,9  |        |
| 4  | 27,7   | 35,9  | 27,7   | 35,9  | 32,5   | 40,0  |        |
| 5  | 33,5   | 41,7  | 33,5   | 41,7  | 36,7   | 44,1  |        |
| 6  | 39,3   | 47,5  | 39,3   | 47,5  | 40,8   | 48,2  |        |
| 7  | 45,1   | 53,3  | 45,1   | 53,3  | 45,0   | 52,4  |        |
| 8  | 50,9   | 59,1  | 50,9   | 59,1  | 49,1   | 56,5  |        |
| 9  | 56,7   | 64,9  | 56,7   | 64,9  | 53,2*  | 60,7* |        |
| 10   | 62,5   | 70,7  | 62,5   | 70,7  | 57,3*  | -     |        |
| 11   | 68,3   | 76,5  | 68,3*  | 76,5* | -      | -     |        |
| 12   | 74,1   | 82,3  | -      | -     | -      | -     |        |
| 13   | 79,9*  | 88,1* | -      | -     | -      | -     |        |
| Innenkurvenradius<br>Interior curve radius<br>Rayon de courbe intérieur          | 26,0 m |       | 18,0 m |       | 18,0 m |       | 12,5 m |

\* Führungsstück nach Montage ablassen. / Lower guide section after erection. / Baissez la cage télescopique après le montage.  
 Weitere Hubhöhen sowie Klettern im Gebäude auf Anfrage. / Further hoist heights and climbing in the building on request. /  
 Hauteurs sous crochet plus élevées et hissage dans le bâtiment sur demande.

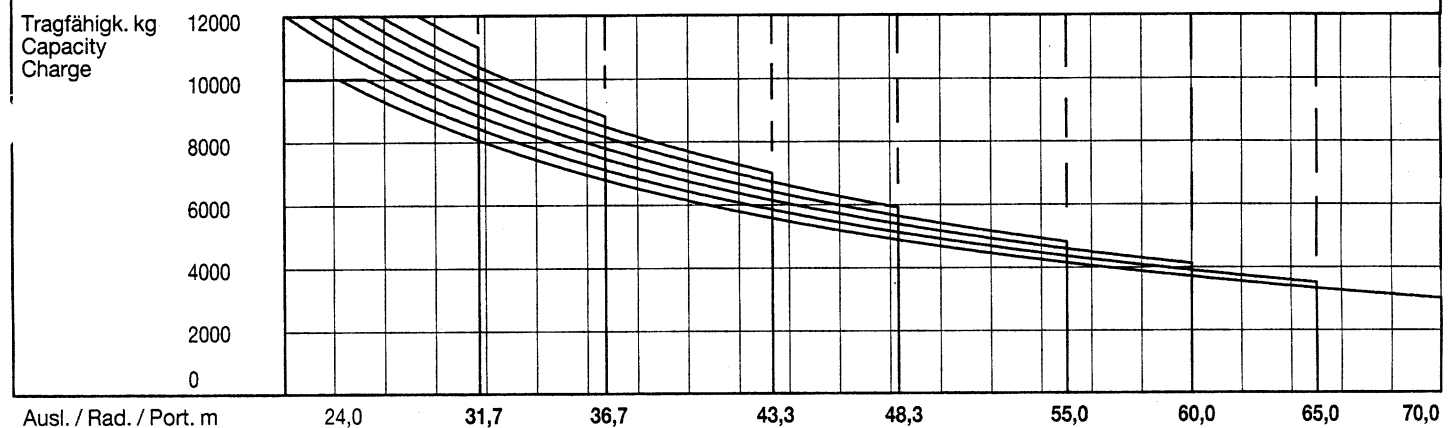
# 290 HC

# Ausladung und Tragfähigkeit

## Radius and capacity

## Portée et charge

| Auslegerlänge<br>Length of jib<br>Longueur de flèche | max. kg             | m/kg  |       |       |       |      |      |      |      |      |      |      |      |      |      |      |      |      |      |
|--|---------------------|-------|-------|-------|-------|------|------|------|------|------|------|------|------|------|------|------|------|------|------|
|  |                     | 24,0  | 26,0  | 28,0  | 31,7  | 34,0 | 36,7 | 40,0 | 43,3 | 46,0 | 48,3 | 52,0 | 55,0 | 58,0 | 60,0 | 62,0 | 65,0 | 68,0 | 70,0 |
| m r  | m/kg                |       |       |       |       |      |      |      |      |      |      |      |      |      |      |      |      |      |      |
| 70,0 (r = 71,36)                                     | 2,4 - 26,2<br>12000 | 10000 | 10000 | 9280  | 8050  | 7420 | 6780 | 6130 | 5570 | 5170 | 4870 | 4440 | 4130 | 3860 | 3690 | 3540 | 3320 | 3120 | 3000 |
| 65,0 (r = 66,36)                                     | 2,4 - 27,3<br>10000 | 10000 | 10000 | 9700  | 8420  | 7770 | 7110 | 6420 | 5840 | 5430 | 5110 | 4670 | 4350 | 4060 | 3890 | 3720 | 3500 |      |      |
| 60,0 (r = 61,36)                                     | 2,4 - 24,1<br>12000 | 12000 | 11040 | 10160 | 8820  | 8140 | 7450 | 6740 | 6130 | 5700 | 5380 | 4910 | 4580 | 4280 | 4100 |      |      |      |      |
| 55,0 (r = 56,36)                                     | 2,4 - 25,0<br>12000 | 12000 | 11510 | 10590 | 9210  | 8500 | 7790 | 7050 | 6420 | 5970 | 5630 | 5140 | 4800 |      |      |      |      |      |      |
| 48,3 (r = 49,70)                                     | 2,4 - 26,0<br>12000 | 12000 | 12000 | 11070 | 9630  | 8890 | 8140 | 7370 | 6720 | 6250 | 5900 |      |      |      |      |      |      |      |      |
| 43,3 (r = 44,70)                                     | 2,4 - 26,9<br>12000 | 12000 | 12000 | 11500 | 10010 | 9250 | 8480 | 7680 | 7000 |      |      |      |      |      |      |      |      |      |      |
| 36,7 (r = 38,00)                                     | 2,4 - 27,8<br>12000 | 12000 | 12000 | 11930 | 10380 | 9600 | 8800 |      |      |      |      |      |      |      |      |      |      |      |      |
| 31,7 (r = 33,00)                                     | 2,4 - 29,3<br>12000 | 12000 | 12000 | 12000 | 11000 |      |      |      |      |      |      |      |      |      |      |      |      |      |      |



# Geschwindigkeiten

## Speeds

## Vitesses

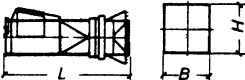
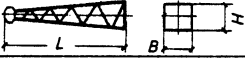
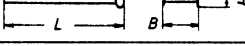
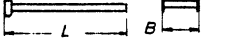
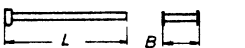
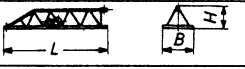

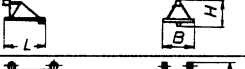
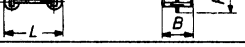
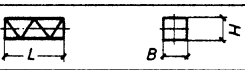
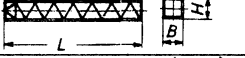
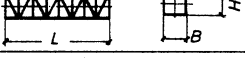
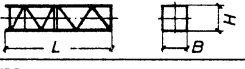
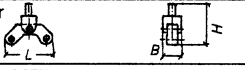
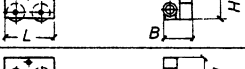

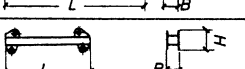
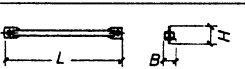
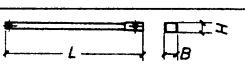
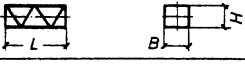

|  |                                 |   |
|--|---------------------------------|---|
|  | U/min<br>0,7 sl./min<br>tr./min | 2 x 5,0 kW  |
|  | 8,0 / 16,0 / 50,0 / 95,0 m/min  | 5,5 kW  |
|  | 25,0 m/min                      | 4 x 7,5 kW (550 HC, 390 HC)<br>2 x 7,5 kW (290 HC)    |
| <b>Anschlußwerte Kranoberteil</b><br>Power requirement, upper part<br>Puissance requise, partie supérieure |                                 | Hubwerk<br>Hoist gear<br>Mécanisme de levage<br>61 kW |
| kW   |                                 | 76,5  |
| kVA  |                                 | 78,0  |

| Hubwerk<br>Hoist gear<br>Mécanisme de levage   | Gang<br>Gear<br>Rapport | kg    | m/min        |
|--|-------------------------|-------|--------------|
| 61,0 kW<br>WIW 270 RX 085<br>Elmag, WSB<br>Hubhöhe 87,0 m<br>Hoisting height<br>Hauteur sous crochet | 1                       | 12000 | 1,4 / 14,0   |
|  | 2                       | 5000  | 5,1 / 51,0   |
|  | 3                       | 2100  | 10,1 / 101,0 |

# Technische Daten - Technical data

# Caractéristiques techniques

# Kolli-Liste Packing List Liste de colisage

| <b>Kranoberteil</b>       |               | Upper part of crane<br>Partie supérieure de grue   |  | L (m)   | B (m)      | H (m)                        | kg*                         |                             |                          |
|---------------------------|---------------|--|--|---|------------|------------------------------|-----------------------------|-----------------------------|--------------------------|
| Pos. Item Rep.            | Anz. Qty. Qté | Drehbühne<br>Slewing platform<br>Ensemble mât-cabine   |  |    | 290 HC     | 6,24                         | 2,74                        | 2,57                        | 9080                     |
| 2                         | 1             | Turmspitze<br>Tower head<br>Porte-flèche   |  |    |            | 8,88                         | 1,64                        | 1,80                        | 2560                     |
| 3                         | 1             | Gegenausleger-Kopfstück<br>Counter-jib head<br>Pointe de contre-flèche   |  |    |            | 8,41                         | 2,42                        | 0,92                        | 2720                     |
| 4                         | 1             | Gegenausleger-Anlenkstück<br>Counter-jib heel section<br>Pied de contre-flèche   |  |    |            | 8,44                         | 1,77                        | 0,92                        | 2160                     |
| 5                         | 1             | Gegenausleger-Zwischenstück<br>Intermediate counter-jib section<br>Élément interm. de contre-flèche  |  |    |            | 5,22                         | 1,76                        | 0,92                        | 1550                     |
| 6                         | 1             | Ausleger-Anlenkstück<br>Jib heel section<br>Pied de flèche   |  |    |            | 12,02                        | 1,84                        | 1,96                        | 2980                     |
| 7                         | 3             | Ausleger-Zwischenstück<br>Intermediate jib section<br>Élément interm. de flèche  |  |    |            | 12,02                        | 1,63                        | 1,87                        | 2210                     |
|                           | 1             |  |  |   |            | 5,36                         | 1,63                        | 1,87                        | 925                      |
|                           | 1             |  |  |   |            | 7,03                         | 1,63                        | 1,87                        | 1015                     |
|                           | 1             |  |  |   |            | 10,36                        | 1,63                        | 1,87                        | 1864                     |
| 8                         | 1             | Ausleger-Kopfstück<br>Jib head<br>Pointe de flèche   |  |    |            | 2,21                         | 1,84                        | 2,05                        | 330                      |
| 9                         | 1             | Laufkatze und Lasthaken<br>Trolley and hook<br>Chariot de distribution et crochet  |  |    |            | 1,89                         | 1,83                        | 1,20                        | 960                      |
| <b>Turm</b>               |               | <b>Tower</b>   |  |   |            |                              |                             |                             |                          |
| <b>Mât</b>                |               | <b>Mât</b>   |  |   |            |                              |                             |                             |                          |
| 10                        | 9             | Turmstück<br>Tower section<br>Élément de mât   |  |    | 290 HC     | 4,14                         | 2,30                        | 2,30                        | 2260                     |
|                           | 11            |  |  |   | 390 HC     | 6,28                         | 2,45                        | 2,45                        | 5315                     |
|                           | 13            |  |  |   | 550 HC     | 6,28                         | 2,45                        | 2,45                        | 6400                     |
| 11                        | 1             | Turmstück lang<br>Long tower section<br>Élément de mât long  |  |    | 290 HC     | 12,42                        | 2,30                        | 2,30                        | 5520                     |
| 12                        | 1             | Grundturmstück<br>Base tower section<br>Mât de base  |  |   | 290 HC (*) | 8,85 (12,42)                 | 2,30 (2,30)                 | 2,30 (2,30)                 | 4580 (7700)              |
| <b>Klettereinrichtung</b> |               | <b>Climbing equipment</b>  |  |   |            |                              |                             |                             |                          |
| <b>Mât</b>                |               | <b>Équipement de télescopage</b>   |  |   |            |                              |                             |                             |                          |
| 13                        | 1             | Führungsstück kpl., geteilt<br>Guide section cpl., split<br>Cage télescopique cpl., dévisée  |  |  | 290 HC     | 8,39                         | 2,80                        | 2,50                        | 5100                     |
|                           |               |  |  |   | 390 HC     | 12,39                        | 2,75                        | 1,58                        | 8300                     |
|                           |               |  |  |   | 550 HC     | 12,39                        | 2,75                        | 1,58                        | 8300                     |
| 14                        | 1             | Hydraulikanlage, Stütz- und Klettertraverse<br>Hydraulic unit, supporting and climbing cross members<br>Système hydraulique avec traverses d'appui et de télescopage |  |   | 290 HC     | 2,10                         | 1,25                        | 1,00                        | 1150                     |
|                           |               |  |  |   | 390 HC     | 2,10                         | 1,10                        | 1,00                        | 1810                     |
|                           |               |  |  |   | 550 HC     | 2,10                         | 1,10                        | 1,00                        | 1810                     |
| <b>Unterwagen</b>         |               | <b>Undercarriage</b>   |  |   |            |                              |                             |                             |                          |
| <b>Châssis</b>            |               | <b>Châssis</b>   |  |   |            |                              |                             |                             |                          |
| 15                        | 4             | Ausgleichsschwinge mit Schwingenlager<br>Pivot for wheel box<br>Chape pour bogie   |  |  | 390 HC     | 1,60                         | 0,72                        | 1,48                        | 1390                     |
|                           |               |  |  |   | 550 HC     |                              |                             |                             |                          |
| 16                        | 2             | Fahrschemel mit Antrieb<br>Driven bogie<br>Bogie moteur  |  |  | 290 HC     | 1,63 (1,46)                  | 0,92 (0,84)                 | 0,95 (0,87)                 | 1450 (960)               |
|                           | 4             |  |  |   | 390 HC     | 1,40                         | 0,75                        | 0,65                        | 780                      |
|                           | 4             |  |  |   | 550 HC     | 1,45                         | 0,82                        | 0,72                        | 1060                     |
| 17                        | 2             | Fahrschemel ohne Antrieb<br>Non-driven bogie<br>Bogie fou  |  |  | 290 HC     | 1,37 (1,15)                  | 0,62 (0,60)                 | 0,95 (0,87)                 | 1120 (520)               |
|                           | 4             |  |  |   | 390 HC     | 1,10                         | 0,60                        | 0,65                        | 340                      |
|                           | 4             |  |  |   | 550 HC     | 1,30                         | 0,40                        | 0,72                        | 730                      |
| 18                        | 1             | Tragholm lang<br>Long support arm<br>Longeron long   |  |  | 290 HC     | 9,10 (11,95)                 | 0,80 (0,82)                 | 0,80 (0,80)                 | 1650 (2200)              |
|                           | 1             |  |  |   | 390 HC     | 11,82                        | 0,92                        | 0,93                        | 3515                     |
|                           | 2             |  |  |   | 550 HC     | 7,32                         | 0,92                        | 0,93                        | 2330                     |
| 19                        | 2             | Tragholm kurz<br>Short support arm<br>Longeron court   |  |  | 290 HC     | 4,45 (5,58)                  | 0,77 (0,65)                 | 0,77 (0,77)                 | 800 (1035)               |
|                           |               |  |  |   | 390 HC     | 5,74                         | 0,80                        | 0,90                        | 1600                     |
|                           |               |  |  |   | 550 HC     | 7,14                         | 0,80                        | 0,90                        | 2135                     |
| 20                        | 2+2           | Randträger<br>Border support<br>Traverse   |  |  | 290 HC     | 5,46 - 5,40<br>(7,52 - 7,46) | 0,11 - 0,18<br>(0,1 - 0,17) | 0,16 - 0,38<br>(0,1 - 0,38) | 175 - 525<br>(366 - 912) |
|                           |               |  |  |   | 390 HC     | 7,30                         | 0,14                        | 0,14                        | 340                      |
|                           |               |  |  |   | 550 HC     | 9,30                         | 0,14                        | 0,14                        | 510                      |
| 21                        | 4             | Stützholm<br>Support strut<br>Hauban de châssis  |  |  | 290 HC     | 4,14 (6,55)                  | 0,18 (0,22)                 | 0,25 (0,25)                 | 320 (600)                |
|                           |               |  |  |   | 390 HC     | 6,06                         | 0,26                        | 0,34                        | 862                      |
|                           |               |  |  |   | 550 HC     | 6,98                         | 0,26                        | 0,34                        | 1140                     |
| 22                        | 1             | Unterwagen-Turmstück<br>Undercarriage tower section<br>Mât de châssis  |  |  | 290 HC     | 3,73 (6,70)                  | 2,62 (2,53)                 | 2,62 (2,53)                 | 2550 (3800)              |
|                           |               |  |  |   | 390 HC     | 6,61                         | 2,44                        | 2,44                        | 7475                     |
|                           |               |  |  |   | 550 HC     | 6,61                         | 2,44                        | 2,44                        | 7930                     |
| 23                        |               | Kleinteile, Seile und Abspannungen<br>Small parts, ropes and holding bars<br>Accessoires, câbles et tirants  |  |   | 290 HC     |                              |                             |                             |                          |
|                           |               |  |  |   | 390 HC     | 9,00                         | 1,60                        | 1,00                        | 5000                     |
|                           |               |  |  |   | 550 HC     |                              |                             |                             |                          |

(\*) Angaben in Klammern gelten für 8 m-Unterwagen. / The data in brackets are valid for an undercarriage of 8 m. / Les données techniques indiquées entre parenthèses sont valables pour un châssis de 8 m.

\* Einzelgewichte. Montagegewichte: siehe Betriebsanweisung. / Single weights. Erection weights: see instruction manual. / Poids individuels. Poids de montage: voir manuel de service.

Datenblatt Nr. 121 P 2784 - FEM (Section 1) Krangruppe A 3 • 05.90  
Data sheet / Feuille de caractéristiques

Konstruktionsänderungen vorbehalten!  
Subject to alterations! / Sous réserves de modifications!

Printed in Fed. Rep. of Germany

Nehmen Sie Kontakt auf mit  
Contact

Mettez-vous en rapport avec

LIEBHERR-WERK BIBERACH GMBH, Postfach 1663, D-7950 Biberach an der Riss 1,  
Telefon (073 51) 41-0, Telex 71 802, Telefax (073 51) 4 1225