

GENERATOR

EC2000K1
EC2000K2
EC2200K3

PARTS CATALOGUE

3

FOREWORD INDEX

1

ENGINE GROUP

2

FRAME GROUP

3

PART NUMBER INDEX

4

PART NAME INDEX

5

Instruction for use of parts catalogue

- **This parts catalogue was prepared based on the latest information available as of February 01, 2012.**
- See the parts catalogue news for any revision that is made after February 01, 2012.
- **Always specify the part number when ordering a part.**
 - Check the model, type, serial numbers, color, maker, and the size as needed before ordering a part.
 - Note that the illustrations (part drawings) can differ from the actual parts in shape. They are given just to help you to refer to the parts.
- **When modifications or additions to this parts catalogue are made, a revised edition will be issued at an appropriate time, with successively progressing revision numbers on the cover. We recommend obtaining such revisions in order to keep your parts catalogue up-to-date at all times. To check whether a parts catalogue revision has been issued, please contact your Honda distributor.**

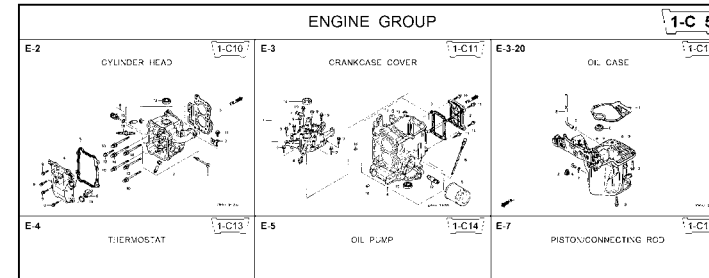
Initial version issue date **December 10, 2005**
Honda Motor Co., Ltd.

CONTENTS

	Page	Address No.
● Instruction for use of parts catalogue	1	B 1
● How to refer to the part information	2	B 2
● Part catalogue structure	3	B 3
● When the parts were revised.....	4	B 4
● Abbreviations used in the parts catalogue.....	4	B 4
● How to check the part block and serial numbers.....	5	B 5
● Models, parts catalogue codes and applicable serial numbers	6	B 6
● Features of each type.....	8	B 8
● Fuel hose, general purpose hoses and vinyl hose.....	9	B 9
● FLAT RATE SERVICE TIME	10	B10
● Illustrated index	15	B15
● ENGINE GROUP.....	18	D 1
● FRAME GROUP.....	37	F 1
● PART NO. INDEX.....	48	G 1
● PART NAME INDEX.....	50	H 1

How to refer to the part information

A Reference with "Illustrated index"



B Reference with "Part number index"

PART NO. INDEX					
Part Number	Address	Page	Ref.	Part Number	Address Page
06000				15212-ZW9-000	1-C14 3C
06316-ZW9-000	1-69	88	1	15220-ZW9-003	1-C14 3C
11000				15332-ZW9-000	1-E8 55
11300-ZW9-405	1-C11	27	1	15332-ZW9-A30	1-E11 5E
11300-ZW9-406	1-C11	27	1	15400-PFB-004	1-C11 27
11340-ZW9-000	1-C11	27	2	15422-ZW9-000	1-C14 3C
11342-ZW9-000	1-C11	27	3	15473-881-000	1-C14 3C
11381-ZW9-003	1-C12	28	1	15474-ZW9-000	1-C14 3C
				15611-921-000	1-C10 2E
				15655-ZW9-000	1-C11 27
				16000	
12000				16010-ZV4-005	1-D4 3E
12000-ZW9-405ZA	1-C11	27	4	16011-ZV4-005	1-D4 3E
12155-ZV4-A00	1-C13	29	1	16013-ZW9-003	1-D4 3E
12166-ZW9-000	1-C10	26	1	16016-ZW9-003	1-D4 3E
12209-GB4-681	1-C16	32	1	16016-ZW9-721	1-D4 3E
12210-ZW9-405ZA	1-C10	26	2	16023-ZW9-003	1-D4 3E
12216-ZE2-300	1-E8	55	1	16024-ZV4-650	1-D4 3E
	1-E11	58	1	16028-ZV4-650	1-D4 3E

Block No.

Address No.

E-2 CYLINDER HEAD 1-C10

ZW83-50200

Ref. No.	Part No.	Description	Reqd. QTY						Serial No.	Parts catalogue code
			99D1	99D1	1001	1001	1001	1001		
1	12166-ZW9-000	STOPPER, ENGINE SIDE	2	2	2	2	2			
2	12210-ZW9-000ZA	HEAD COMP., CYLINDER	1	1	1	1	1			
3	12251-ZW9-003	GASKET, CYLINDER HEAD	1	1	1	1	1			
4	12310-ZW9-000	COVER COMP., HEAD	1	1	1	1	1			
5	12312-ZW9-000	PACKING, HEAD COVER	1	1	1	1	1			
6	15611-921-000	CAP, OIL (NO GAUGE)	1	1	1	1	1			
7	16617-ZW9-000	HOLDER, CABLE	1	1	1	1	1		SC,SG	
	16617-ZW9-010		1	1	1	1	1	1001801	LHC,LHD	
			1	1	1	1	1		LHC,LHD	
8	35673-ZV5-003	SENSOR ASSY., WATER	1	1	1	1	1			
9	90003-ZW9-000	BOLT, FLANGE, 6X22	4	4	4	4	4			
10	90007-ZW9-003	BOLT, FLANGE, 8X83	6	6	6	6	6			
11	90011-ZW9-000	BOLT, FLANGE, 6X14(CT200)	1	1	1	1	1			
12	90020-ZW9-000	BOLT, FLANGE, 8X40	2	2	2	2	2			
13	91202-KJ9-003	OIL SEAL, 20X32X6	1	1	1	1	1			
14	91301-805-000	O-RING, 26X2.7	1	1	1	1	1			
15	91307-PK2-005	O-RING, 9.5X1.5(HONDA KIKAKI)	1	1	1	1	1			
16	98059-55916	PLUG, SPARK (CR5EH-9)	2	2	2	2	2			
	98059-55926	PLUG, SPARK (U16FER9)	2	2	2	2	2			

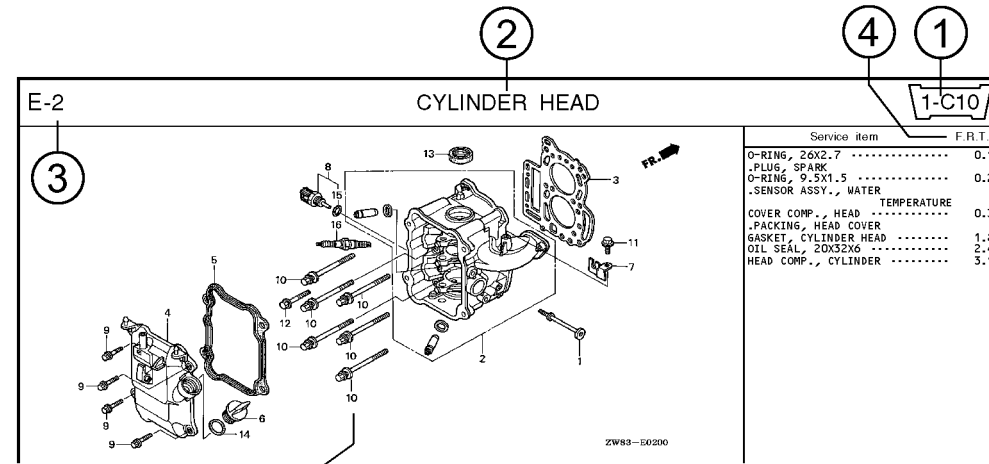
C Reference with "Part name index"

PART NAME INDEX					
Part name	Address	Page	Ref.		
[A]					
ABSORBER , FUEL	1-E15	62	5	BOLT ,	
ARMATURE COMP.	1-D11	43	7	BOLT ,	
ARM COMP. , LINK JOINT	1-G6	85	18	BOLT ,	
ARM COMP. , SHIFT LINK	1-G6	85	14	BOLT ,	
ARM COMP. , TILT	1-F15	79	20		
ARM , FUEL PUMP ROCKER	1-C16	32	4		
ARM , REVERSE LOCK	1-F15	79	18		
ARM , SHIFT LINK	1-F11	74	7		
ARM , STOPPER	1-D1	33	12	BOLT ,	
ARM , THROTTLE REMOTE	1-F11	74	6		
ARM , VALVE ROCKER	1-C16	32	3		
[B]					
BAG , TOOL , 160MM	1-G5	84	10		
BAND	1-G6	86	37		
BAND B1 , WIRE	1-F6	69	1		
BAND , CORD	1-F3	67	18	BOLT ,	
BAND , TUBE CLIP , 11MM	1-E15	63	20		
BAND , TUBE CLIP , 12.5MM	1-E15	63	19	BOLT ,	

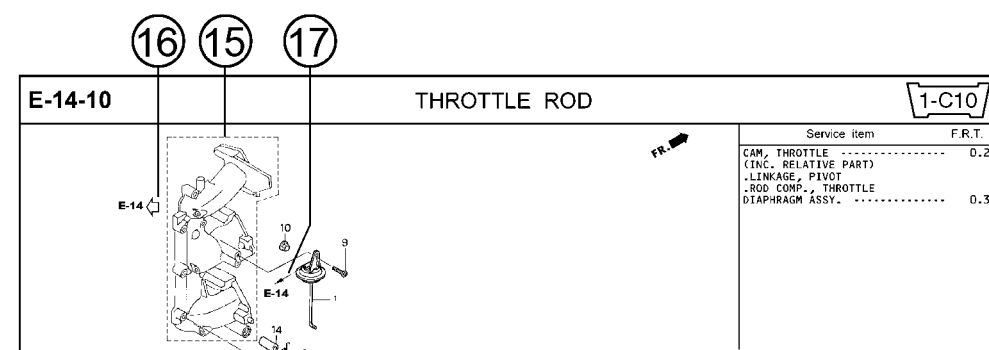
Page No.

2000.09.20 E

Part catalogue structure

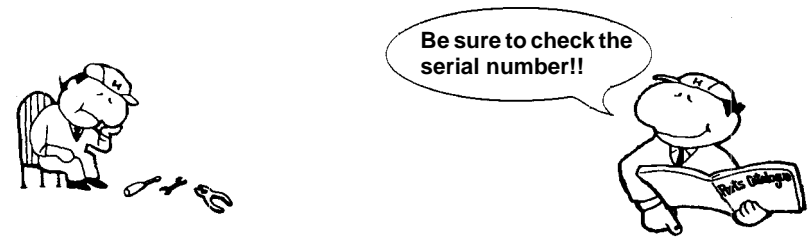


Ref. No.	Part No.	Description	Reqd. QTY						Serial No.	Parts catalogue code
			BF 9/9D1	BFP 9/9D1	BF 10D1	BFP 10D1	BF 10B1	BFP 10B1		
1	12166-ZW9-000	STOPPER, ENGINE SIDE	2	2	2	2	2	2		
2	12210-ZW9-000ZA	HEAD COMP., CYLINDER *NHS* DARK GRAY	1	1	1	1	1	1		
3	12251-ZW9-003	GASKET, CYLINDER HEAD	1	1	1	1	1	1		
4	12310-ZW9-000	COVER COMP., HEAD	1	1	1	1	1	1		
5	12312-ZW9-000	PACKING, HEAD COVER	1	1	1	1	1	1		
6	15611-921-000	CAP, OIL (NO GAUGE)	1	1	1	1	1	1		
7	16617-ZW9-000 16617-ZW9-010	HOLDER, CABLE	1	1	1	1	1	1	----- SC,SG 1001800 LHC,LHD	



- ① **Address number**
 - Address No. is provided (in place of the page No.) to help you refer to the part with the part No. or part name.
- ② **Block title** ③ **Block number**
- ④ **Service item/Flat rate time**
- ⑤ **Reference number**
 - Title number marked with the parenthesis or parentheses indicates that it continues from the previous page.
- ⑥ **Part number** ⑦ **Honda color code**
- ⑧ **Description**
- ⑨ **Assemblies**
 - Sections framed with broken lines in the exploded view drawings are available as complete assemblies. (Their individual parts can also be obtained.)
- ⑩ **Color description**
- ⑪ **Note**
 - Notes are shown with the parentheses in the part name column.
- ⑫ **Required quantity**
 - Required QTY shown in the parenthesis or parentheses indicates the optional part.
 - Required QTY marked with "N" Indicates the optional part that should be selected as needed.
 - Required QTY indicates the number of the part used in the block.
- ⑬ **Serial number**
- ⑭ **Type**
 - When the type column is blank, it indicates that the part is applicable to all types.
 - As the type of the actual unit may differ from the "parts catalogue, type" please refer to "Models, types and applicable serial numbers" for confirmation.
- ⑮ **Parts enclosed within a dotted line**
 - Parts enclosed within a dotted line are covered in a different block.
- ⑯ **Hollow arrow**
 - A hollow arrow indicates the block No. for the parts enclosed within a dotted line.
- ⑰ **Solid arrow**
 - A solid arrow indicates the block No. the part in question is connected to.

When the parts were revised



Ref. No.	Part No.	Description	Reqd. QTY						Serial No.
			BF 9.9D1	BFP 9.9D1	BF 10D1	BFP 10D1	BF 10B1	BFP 10B1	
1	12166-ZW9-000	STOPPER, ENGINE SIDE	2	2	2	2	2	2	
2	12210-ZW9-000ZA	HEAD COMP., CYLINDER							
		NH8.....DARK GRAY	1	1	1	1	1	1	
3	12251-ZW9-003	GASKET, CYLINDER HEAD	1	1	1	1	1	1	
4	12310-ZW9-000	COVER COMP., HEAD	1	1	1	1	1	1	
5	12312-ZW9-000	PACKING, HEAD COVER	1	1	1	1	1	1	
6	15611-921-000	CAP, OIL (NO GAUGE)	1	1	1	1	1	1	
7	16617-ZW9-000	HOLDER, CABLE (###)	1	1	1	1	1	1	
	16617-ZW9-010		1	1	1	1	1	1	

The number has been used from the initial model without revision.

When shown at the left side, it is applicable to the models of No.1001801 and the subsequent numbers.

When shown at the right side, it is applicable to the models up to No.1001800.

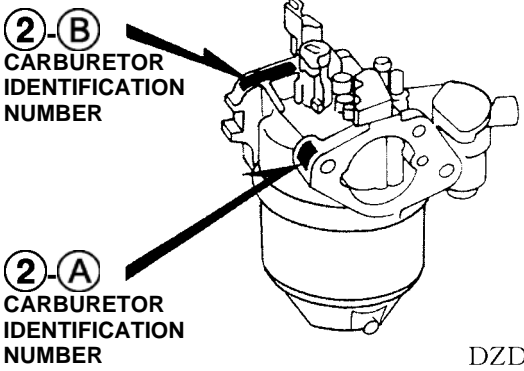
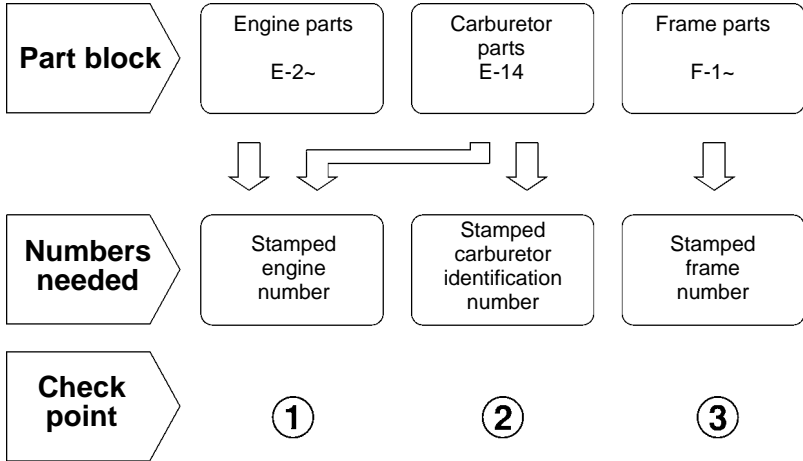
- The parts listed with "###" at the end of the parts name have limited supply period (parts not for sale).

Abbreviations used in the parts catalogue

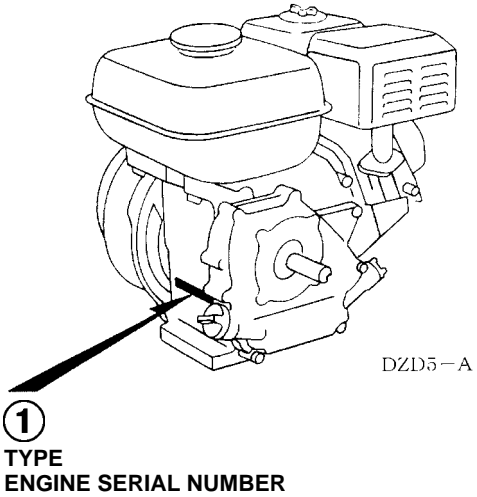
• The following abbreviations are used in the parts name column.

- | | |
|----------------------------------------------|-----------------------------|
| A Ampere | FR.Front |
| A.C. Alternating current | IN.Inlet |
| ASSY. Assembly | L (100L) .Link (100 Links) |
| AT. Automatic transmission | L.Left |
| C.D.I. Capacitive discharge ignition | MMMillimeter |
| COMP. ... Complete | MT.Manual Transmission |
| D.C. Direct current | P.T.O.Power take off |
| EX. Exhaust | R.Right |
| G.F.C.I ... Ground fault circuit interruptor | RR.Rear |
| HEX. Hexagonal | STD.Standard |
| H.S.T. Hydrostatic transmission | T (22T) ...Tooth (22 Teeth) |
| | VVolt |
| | WWatt |

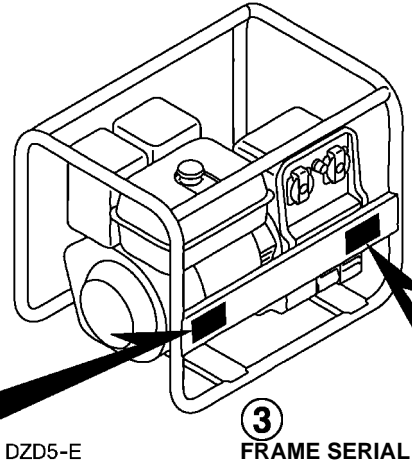
How to check the part block and serial numbers



DZD5-B



DZD5-A



Models, parts catalogue codes and applicable serial numbers

1

- Models, parts catalogue codes and applicable serial Nos. given in this parts catalogue can be identified as follows.

Model	Type	Parts catalogue type	Engine		Applicable engine serial No.	Applicable frame serial No.	Applicable carburetor identification No.
			Model	Type			
EC2000K1	B1T	B1T	GX160T1	EY1	GCABT-1000001~	EABF-1200001~	BE65Q A
	FT	FT					
	GVT	GVT					
	GVWT	GVWT					
	ITT	ITT					
	WT	WT					
EC2000K2	B1T	B1T	GX160T2	EY3	GCBRT-1000001~	EABF-1300001~	BE54C A
	FT	FT					
	GVT	GVT					
	GVWT	GVWT					
	ITT	ITT					
	WT	WT					

Model	Type	Parts catalogue type	Engine		Applicable engine serial No.	Applicable frame serial No.	Applicable carburetor identification No.
			Model	Type			
EC2200K3	B1T	B1T	GX160T1	EY1	GCABT-1000001~	EABF-1100001~	BE65Q A
	FT	FT					
	GVT	GVT					
	GVWT	GVWT					
	ITT	ITT					
	WT	WT					

* Of carburetor identification numbers, only the portions underlined in the example below are used for registration.

BE 65Q A KC †
 (A) (B)

Features of each type

1

• See the following table for the features of each type. (Items in brackets are optional)

Specifications		Model	EC2000K1					EC2000K2						
		Type	B1T	FT	GVT	GVWT	ITT	WT	B1T	FT	GVT	GVWT	ITT	WT
Voltage	115V		●						●					
	230V		●	●	●	●	●	●	●	●	●	●	●	●
Receptacle	16A-250V (Blue)		●				●		●				●	
	16A-250V (Black)			●	●	●	●			●	●	●	●	
	16A-110V (Yellow)		●						●					
	10A-250V (Black)						●							●

Specifications		Model	EC2200K3					
		Type	B1T	FT	GVT	GVWT	ITT	WT
Voltage	115V		●					
	230V		●	●	●	●	●	●
Receptacle	16A-250V (Blue)		●				●	
	16A-250V (Black)			●	●	●	●	
	16A-110V (Yellow)		●					
	10A-250V (Black)							●

Fuel hose, general purpose hoses and vinyl hose

- The standard part fuel hose, general purpose hose and vinyl hose may be substituted by the coiled bulk part.
- When ordering the standard part fuel hose, general purpose hose and vinyl hose use the bulk part number written in the parts catalog in brackets () underneath the part name.
- When exchanging the hose, cut and use at the specified length as mentioned in the part name.
(For the method of cutting the bulk part, and method of filling out orders etc., please refer to the instructions issued with the bulk part.)

Bulk part number of fuel hose, general purpose hose and vinyl hose.

Example: 9 5 0 0 1 - 7 5 0 0 1 - 5 0 M

Bulk part number:

Refers to the bulk part.

Marking code (fuel hose and general purpose hose)

Change code (Vinyl hose)

Indicates number mark or change sequence, however, the code for the bulk part must be strictly 0 (zero).

Types of code:

- | | | | | | |
|-------------|--------------------------------------------------------|----------------|----------------------------------------------------|--------------|-----------------------------------------------------------------------|
| • Fuel hose | 2: Red outside braid
(3 mm inside dia. only) | • General hose | 1: Ash gray
2: Ash gray
3: Black
5: Black | • Vinyl hose | 1: Clear
2: Black
3: Light red
6: Light red
7: Pale black |
| | 5: Black inside braid | | | | |
| | 3: Red (3 mm inside dia. only) | | | | |
| | 4: Ash gray with red stripe
(3 mm inside dia. only) | | | | |
| | 6: Black | | | | |

Lengths:

- 001: 1 m (standard)
003: 3 m
008: 8 m } Application or specification of some parts is not settled.

I.D code: (fuel hose and general purpose hose)

- | | | | | |
|------------|--------------------|--------------------|-----------------------------|-----------------------------|
| 30: 3.0 mm | 50: 5.0 mm | 70: 7.0 mm | 11: 11 mm | 12: 12 (outside dia. 17) mm |
| 35: 3.5 mm | 55: 5.3 mm, 5.5 mm | 75: 7.3 mm, 7.5 mm | 91: 12 (outside dia. 15) mm | 14: 14 mm |
| 45: 4.5 mm | 65: 6.5 mm | 80: 8.0 mm | 92: 12 (outside dia. 16) mm | 17: 17 mm |

ID./OD. code: (vinyl hose)

- | | | | | |
|-------------------------|--------------------------|---------------------------|---------------------------|---------------------------|
| 01: ID. 2.9, OD. 6.8 mm | 12: ID. 5.0, OD. 7.0 mm | 21: ID. 8.0, OD. 9.0 mm | 37: ID. 11.0, OD. 15.0 mm | 50: ID. 16.0, OD. 19.0 mm |
| 03: ID. 3.0, OD. 6.0 mm | 10: ID. 5.0, OD. 8.0 mm | 23: ID. 8.0, OD. 12.0 mm | 38: ID. 12.0, OD. 13.0 mm | 55: ID. 17.5, OD. 20.5 mm |
| 05: ID. 3.5, OD. 6.5 mm | 11: ID. 5.0, OD. 9.0 mm | 25: ID. 9.0, OD. 11.0 mm | 39: ID. 12.0, OD. 14.0 mm | 60: ID. 22.0, OD. 27.0 mm |
| 07: ID. 4.0, OD. 7.0 mm | 14: ID. 6.0, OD. 9.0 mm | 27: ID. 9.0, OD. 13.0 mm | 40: ID. 12.0, OD. 16.0 mm | |
| 08: ID. 4.5, OD. 6.5 mm | 17: ID. 7.0, OD. 9.0 mm | 33: ID. 10.0, OD. 14.0 mm | 43: ID. 13.0, OD. 15.0 mm | |
| 09: ID. 4.5, OD. 8.0 mm | 19: ID. 7.0, OD. 11.0 mm | 36: ID. 11.0, OD. 13.0 mm | 45: ID. 14.0, OD. 18.0 mm | |

Hose type:

- 1: Fuel hose
3: Vinyl hose
5: General hose

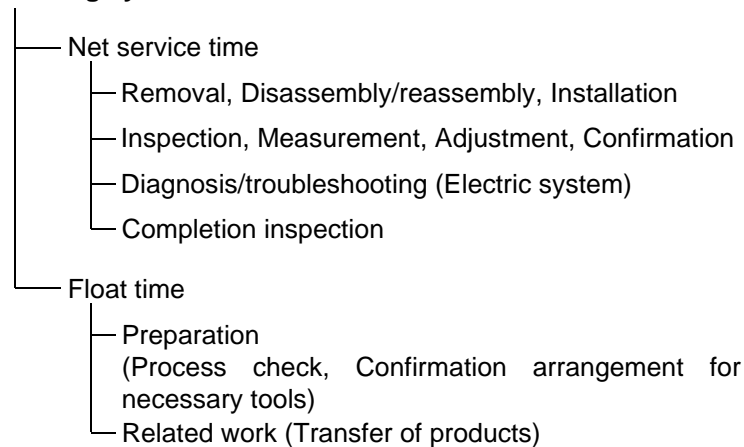
⊙ **CAUTION: It is DANGEROUS to confuse the fuel hose with the general purpose hose or vinyl hose.**

Never use a general purpose hose or vinyl hose in place of a fuel hose or vice versa. Always use the correct bulk part in the parts catalogue, according to the service manual or the instructions issued with the bulk part.

FLAT RATE SERVICE TIME

Flat rate service time (FRT) means the standard time required to service a product, which is listed in this manual to help the dealers control the actual working process and calculate the service charge by using it as a guide.

FRT setting system



* Float time is set by multiplying the net service time by a given coefficient.

Editorial style

The service items shown in the text are listed with the exchange work time for the repair sales parts as the subject. Other representative service items not using repair parts (removal/installation, adjustment, inspection/measuring, and other work) are listed collectively in the list in the preface, classified according to the work.

FRT setting standard

- Decimal system (in unit of 0.1) is adopted to set FRT as it is convenient to calculate the wage.
Example: (0.1) → 6 minutes, (0.2) → 12 minutes
[Labor cost per hour] x [FRT] = [Wage]
- FRT is set with a hand tool.
- Service items and FRT can be subject to change depending on development of tools and service equipment and improvement in service procedure.

Work procedure

- As the work procedure is set with the work time according to the method in the separate Service Manual, refer to this Manual as required.
- Work methods permitting servicing in the shortest time still permitting assurance of safe work and product warranty are used for the setting of service items not listed in the Service Manual.
- Work basically is to be performed by one person, and when two or more people are required, setting is done as the total time for the number of people.
- The set value for the technological level of the workers uses a person with three years of experience in the repair of Honda products as the standard.
- Special tools and service equipment used to set FRT are those specified or recommended in Service Manual.

Service item whose FRT is not presented

- Accessories and service parts that are not listed to use in this manual.
 - Locations with little aging deterioration or breakage during normal use.
 - Service work that can be finished by one touch.
 - Service work that is seldom done (i.e. extremely small causes of trouble and service frequency).
 - Products and parts whose location for installation differs according to its status of use and application.
- * When FRT is not presented, please calculate wages based on appropriate actual work time.

Operation not included of FRT

- Oil and coolant water draining, Waiting time for warming up operation and etc..
- Additional operation that involves removal/installation of standard exterior equipment.
- Indirect time spent for service by visiting the customer, trade-in, and delivery.
- Indirect time required for ordering and delivery of parts.
- Cost for grease, adhesive agent, etc. used for service work.

1

Explanation of FRT by using an example
(The example may differ from the actual presented items)

Ref. No.	L.O.N.	(Relative ref. Number) Description	F.R.T.
①	1111L1	④ VALVE, INTAKE4.1	②
②		⑧ • NOTE: OHV type	⑦
③	1111L1A	⑦ • Includes: Engine removal and installation	
		⑤ One head (intake all) add1.4	

- ① Reference No. of the illustration of part that shows location of the replacement work.
- ② FRT is an abbreviation of Flat Rate Time indicating the standard service time required for the replacement.
- ③ LON is an abbreviation of Labor Operation Number, and it is a classification of the service items by the work unit code.

The same operation code is used regardless of the models.

Standard operation is indicated with 6 digits code, and additional operation is indicated with 7 digits code.

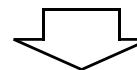
- ④ Indicating the intake valve replacement and FRT4.1.
- ⑤ Indicating FRT1.4 that will be added when additional operation (whole intake side of one cylinder head) is done in association with intake valve replacement.

- ⑥ Indicating work condition or application condition of the service item.
- ⑦ Indicating work contents that are included in the service item.
- ⑧ Indicating a reference No. whose operation and time are the same as FRT4.1 for the intake valve.

(The application range is limited to the service items without an LON setting within a same block.)

How to refer to the service item by using the sample
(intake valve replacement)

Open to the page of the block where the intake valve's spare part illustration is shown.



Look for the intake valve illustration, and refer to the service item and FRT that agree with the reference No.

Indication mark for the listing of service items that continues to the following page

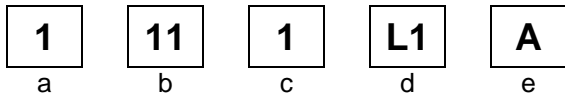
Ref. No.	L.O.N.	(Relative ref. Number) Description	F.R.T.
2	1111L1	VALVE, INTAKE	4.1
	.	.	.
	.	.	.

+
Mark indicated at the last line.

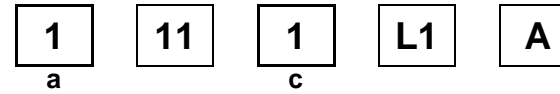
Indication of the block with no setting of FRT

Ref. No.	L.O.N.	(Relative ref. Number) Description	F.R.T.
NO INFORMATION			

• LON code system



- a) Category code..... Engine
- b) Location/function code..... Engine upper
- c) Operation code..... Replace
- d) Operation sequence number (Unit code can be shown with alphabet)
..... Intake valve
(No regular rule of code)
- e) Additional code One head (intake all)
(No regular rule of code)



a) Category codes and classification

Code	Category
1	Engine
2	Power drive
3	Fuel & Exhaust
4	Frame & Body
5	Steering
6	Electrical
7	Axle & Brake
8	Control system
9	-
0	Attachments

c) Operation codes and classification

Code	Operation category
1	Replace, Removal/Installation, Change
2	Overhaul
3	Adjust, Rotation
4	(Paint-related work: Top-coat)
5	Test, Inspect/diagnose, Measurement
6	(Overhaul-related work: Rebore)
7	(Overhaul-related work: Reseal)
8	(Resurface)
9	(Paint-related work: Refinish)
0	Repair, Cleaning, Air bleeding

Major service items without using spare parts

- (1) Removal/Installation, (2) Adjustment,
(3) Inspection/Masurement, (4) Overhaul, (5) Other work

E: Engine, T: Transmission, D: Drive system,
B: Body and related parts

(1) Removal/Installation

Set with the parts configuration in the status of being removed from the product.

	LON	DESCRIPTION	FRT
E	1001A0	ENGINE AND GENERATOR-REMOVAL/INSTALLATION	0.4
	1001A2	ENGINE-REMOVAL/INSTALLATION	1.1
	1111L3	CYLINDER HEAD ASSEMBLY-REMOVAL/INSTALLATION	1.1
B	3101H1	FUEL TANK-REMOVAL/INSTALLATION	0.3
	6221B3	CONTROL PANEL ASSEMBLY-REMOVAL/INSTALLATION	0.2

(2) Adjustment

	LON	DESCRIPTION	FRT
E	1113A1	VALVE CLEARANCE-ADJUSTMENT NOTE: For 1 product	0.4
	1163A0	CONTROL, THROTTLE/GOVERNOR-ADJUSTMENT	0.2
	3113A2	CARBURETOR IDLE-ADJUSTMENT	0.2

(3) Inspection, Measurement, Cleaning

	LON	DESCRIPTION	FRT
E	1105A0	ENGINE OIL-INSPECTION	0.1
	3115A2	CARBURETOR FLOAT LEVEL-MEASUREMENT	0.2
	3120A0	AIR CLEANER-CLEANING INCLUDES: Air cleaner-inspection	0.2

E	3130A0	SPARK ARRESTER-CLEANING INCLUDES: Spark arrester-inspection	0.2
	6140A0	SPARK PLUG-ADJUSTMENT/CLEANING INCLUDES: Spark plug check NOTE: For 1 product	0.1

(4) Overhaul

Work condition: The required Measurements, inspections, adjustments, and cleaning/washing of each part are performed, including the main body removal/installation work and the replacement of defective parts.

	LON	DESCRIPTION	FRT
E	3112A0	CARBURETOR-OVERHAUL INCLUDES: All necessary adjustment	0.6

(5) Other work

	LON	DESCRIPTION	FRT
E	1101E1	ENGINE OIL-CHANGE INCLUDES: Engine oil-inspection	0.1

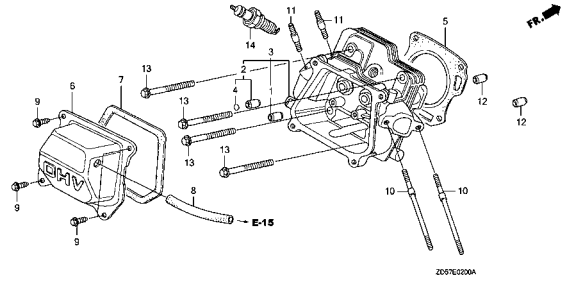
ENGINE GROUP

B15

E-2

CYLINDER HEAD

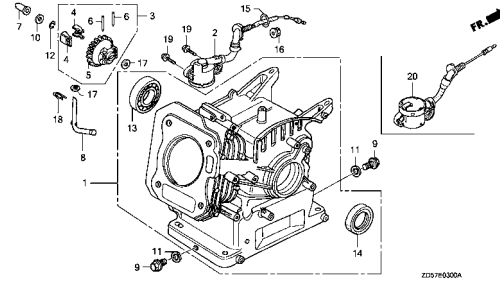
D 1



E-3

CYLINDER BARREL

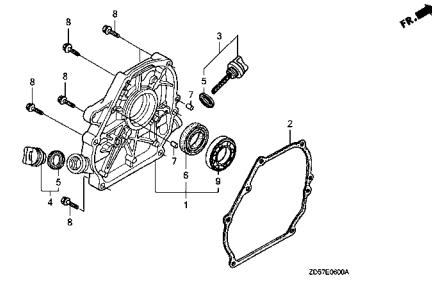
D 2



E-6

CRANKCASE COVER

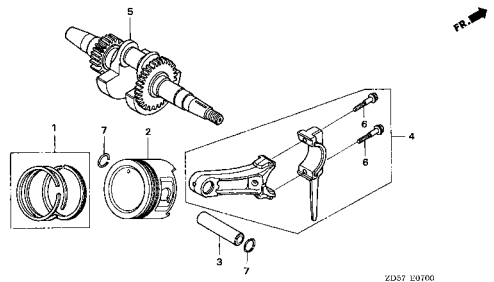
D 4



E-7

CRANKSHAFT/PISTON

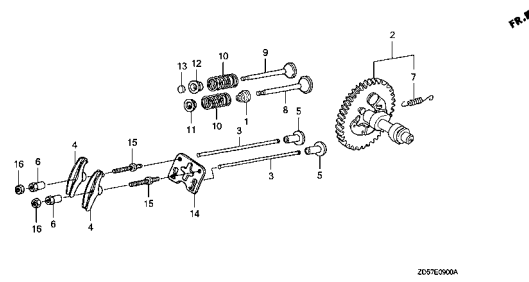
D 5



E-9

CAMSHAFT

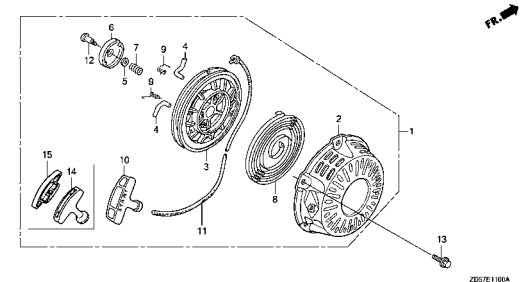
D 7



E-11

RECOIL STARTER

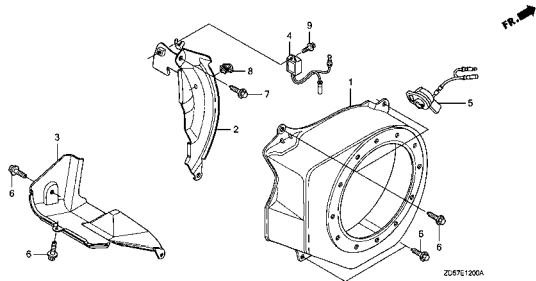
D 9



E-12

FAN COVER

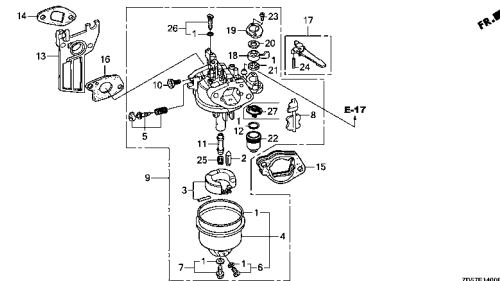
D10



E-14

CARBURETOR

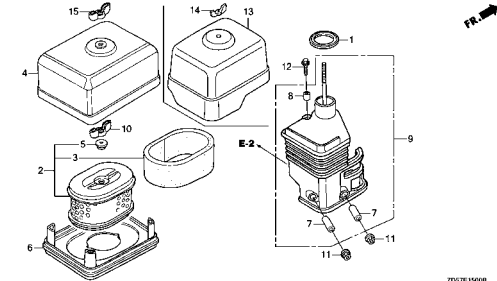
D11



E-15

AIR CLEANER

D13



2

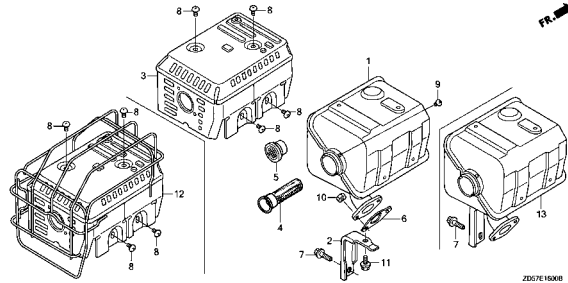
ENGINE GROUP

B16

E-16

MUFFLER

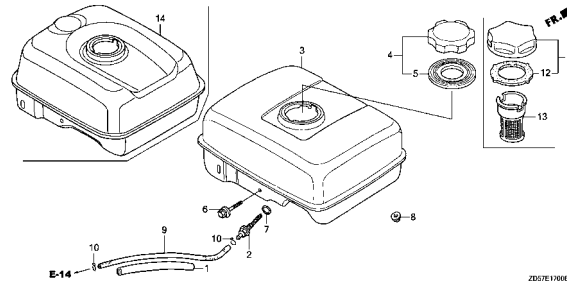
D14



E-17

FUEL TANK

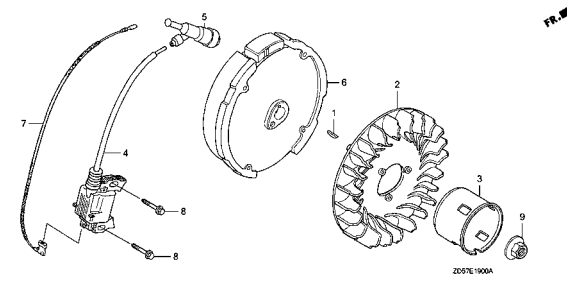
D15



E-19

FLYWHEEL/IGNITION COIL

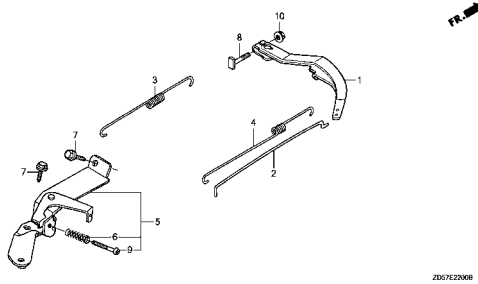
E 1



E-22

CONTROL

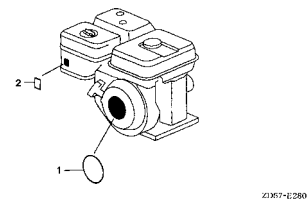
E 2



E-28

LABEL

E 3



2

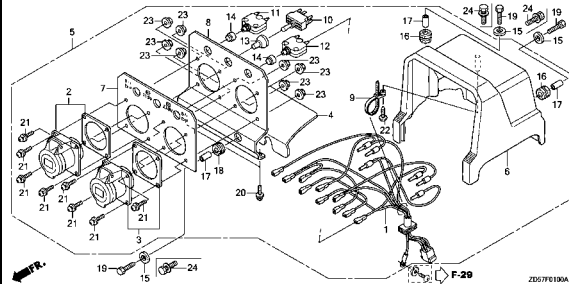
FRAME GROUP

C 1

F-1

CONTROL BOX(B1T)

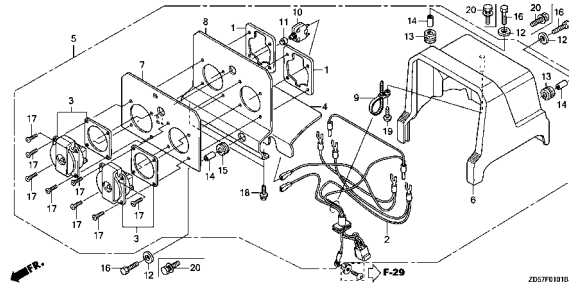
F 1



F-1-1

CONTROL BOX(FT,GVT,GVWT,WT)

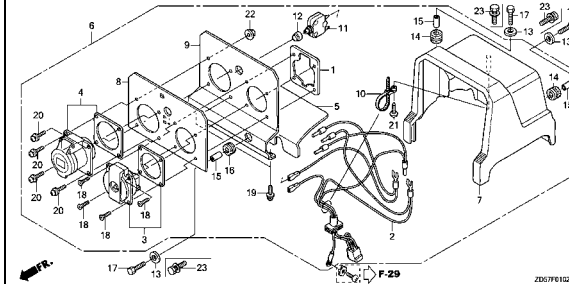
F 3



F-1-2

CONTROL BOX(ITT)

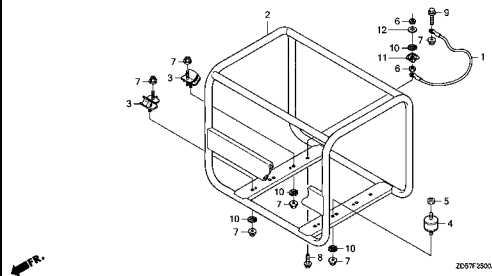
F 5



F-25

FRAME(EC2200K3)

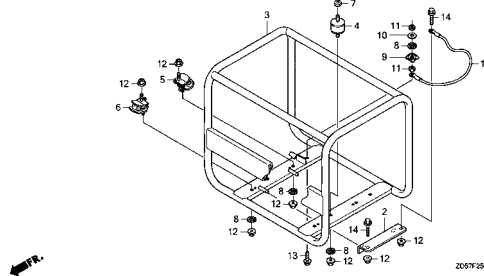
F 6



F-25-1

FRAME(EC2000K1/K2)

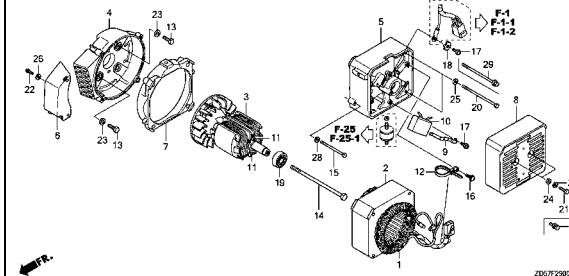
F 7



F-29

ROTOR/STATOR

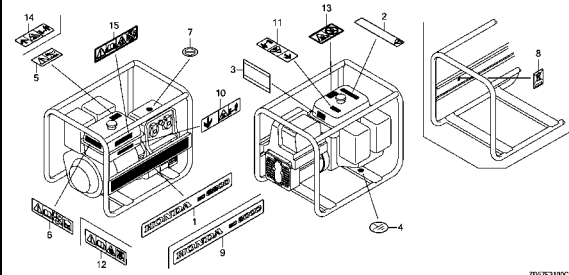
F 8



F-31

LABEL

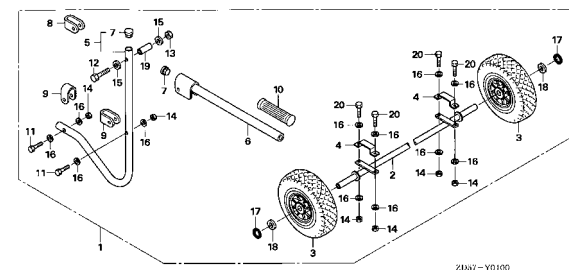
F10



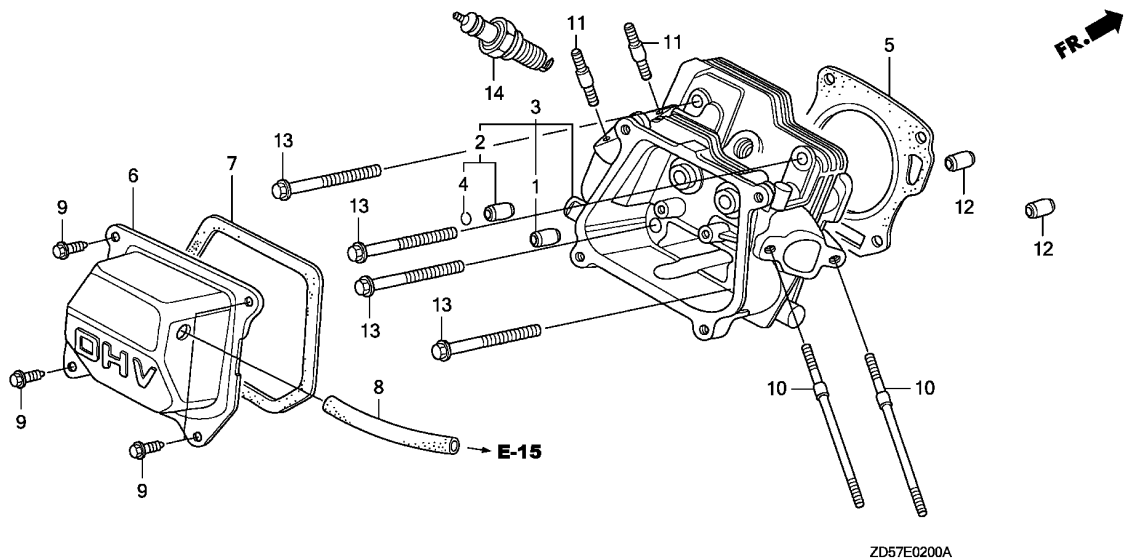
FOP-1

WHEEL KIT

F11

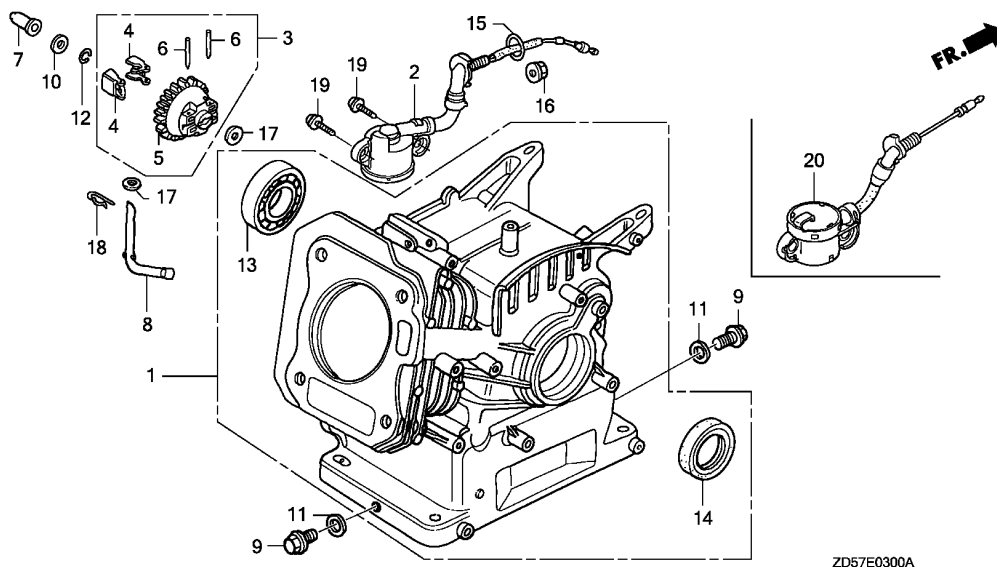


3



Ref. No.	L.O.N.	(Relative ref. Number) Description	F.R.T.
1	1111E9	GUIDE, INTAKE VALVEINCLUDES: Valve clearance adjustment	1.5
	1111E9E	.Replace intake and exhaust all add	0.2
2	1111E8	GUIDE, EXHAUST VALVEINCLUDES: Valve clearance adjustment	1.5
	1111E8E	.Replace intake and exhaust all add	0.2
3	1111N3	HEAD, CYLINDERINCLUDES: Valve clearance adjustment and reface	1.7
5	1111N4	GASKET, CYLINDER HEAD	1.2
6	1111D5	CYLINDER HEAD COVER AND/OR PACKING	0.1
8	1111K5	TUBE, BREATHER	0.1
14	6141C1	PLUG, SPARKINCLUDES: Spark plug check	0.1

Ref. No.	Part No.	Description	Reqd. QTY			Serial No.	Parts catalogue code
			EC 2000 K1	EC 2000 K2	EC 2200 K3		
1	12204-ZE1-306	GUIDE, IN. VALVE(O.S.)	1	1	1		
2	12205-ZE1-315	GUIDE, EX. VALVE(O.S.)	1	1	1		
3	12210-ZH8-415	HEAD COMP., CYLINDER	1	-	1		
	12210-Z4M-405	-	1	-		
4	12216-ZE5-300	CLIP, VALVE GUIDE	1	1	1		
5	12251-Z0T-801	GASKET, CYLINDER HEAD	1	-	-		
	12251-ZL0-003	-	1	-		
	12251-ZF1-800	-	-	1	----- 2607050	
	12251-Z0T-801	-	-	1	2607051 -----	
6	12310-ZE1-020	COVER COMP., HEAD	1	-	1		
	12310-Z4M-000	-	1	-		
7	12391-ZE1-000	PACKING, HEAD COVER	1	1	1		
8	15721-ZH8-000	TUBE, BREATHER	1	1	1		
9	90013-883-000	BOLT, FLANGE, 6X12(CT200) ...	4	4	4		
10	90043-ZE1-020	BOLT, STUD, 6X112	2	2	2		
11	90047-ZE1-000	BOLT, STUD, 8X32	2	2	2		
12	94301-10160	DOWEL PIN, 10X16	2	2	2		
13	95701-08060-00	BOLT, FLANGE, 8X60	4	4	-		
	95723-08060-00	-	-	4	----- 2931992	
	95701-08060-00	-	-	4	2931993 -----	
14	98079-55876	PLUG, SPARK (BPR5ES) (NGK) ...	(1)	(1)	(1)		
	98079-56876	PLUG, SPARK (BPR6ES) (NGK) ...	1	1	1		

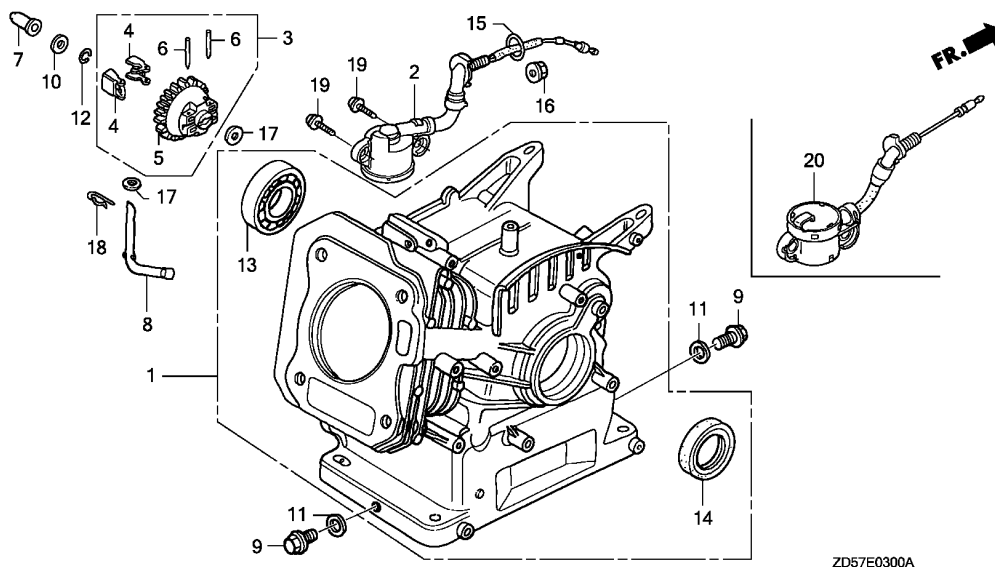


ZD57E0300A

Ref. No.	L.O.N.	(Relative ref. Number) Description	F.R.T.
1	1101A0	BARREL, CYLINDERINCLUDES: Engine removal and installation	2.9
2	6151E8	SWITCH, OIL LEVEL	1.4
3	1161C4	GOVERNOR ASSEMBLYINCLUDES: Engine removal and installation	2.2
5	1161A7	HOLDER, GOVERNOR WEIGHTINCLUDES: Engine removal and installation	2.3
7	1161B6	SLIDER, GOVERNOR	1.2
8	1161B4	SHAFT, GOVERNOR ARMINCLUDES: Engine removal and installation	2.2
13	1101A7	BEARING, CRANKSHAFT :RIGHTINCLUDES: Engine removal and installation	2.4
14	1101E3	OIL SEAL, CRANKSHAFT :RIGHT .. .INCLUDES: Engine removal and installation	2.3

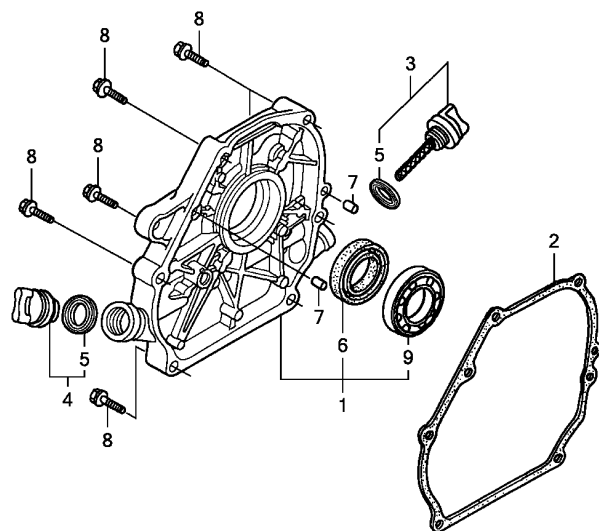
Ref. No.	Part No.	Description	Reqd. QTY			Serial No.	Parts catalogue code
			EC 2000 K1	EC 2000 K2	EC 2200 K3		
1	12000-Z0T-406	BARREL ASSY., CYLINDER (OIL ALERT)	1	-	1		
	12000-Z4M-406	-	1	-		
2	15510-ZE1-033	SWITCH ASSY., OIL LEVEL	-	-	1	----- 3114529	
3	16510-ZE1-000	GOVERNOR ASSY.	1	-	1		
	16510-Z4M-000	-	1	-		
4	16511-ZE1-000	WEIGHT, GOVERNOR	2	-	2		
	16511-Z4M-000	-	2	-		
5	16512-ZE1-000	HOLDER, GOVERNOR WEIGHT	1	-	1		
	16512-Z4M-000	-	1	-		
6	16513-ZE1-000	PIN, GOVERNOR WEIGHT	2	2	2		
7	16531-ZE1-000	SLIDER, GOVERNOR	1	-	1		
	16531-Z4M-000	-	1	-		
8	16541-ZE1-000	SHAFT, GOVERNOR ARM	1	-	1		
	16541-Z4M-000	-	1	-		
9	90131-ZE1-000	BOLT, DRAIN PLUG	2	2	2		
10	90451-ZE1-000	WASHER, THRUST, 6MM	1	-	1		
11	90601-ZE1-000	WASHER, DRAIN PLUG, 10.2MM ..	2	2	2		
12	90602-ZE1-000	CLIP, GOVERNOR HOLDER	1	1	1		
13	91001-Z4X-003	BEARING, RADIAL BALL, 6205 (NSK)	1	1	1		
	91001-ZF1-003	BEARING, RADIAL BALL(6205TMB) (NTN)	1	1	1		
	91001-ZF1-004	BEARING, RADIAL BALL(6205SH) (KOYO)	1	1	1		
14	91201-Z0T-801	OIL SEAL, 25X41X6	1	1	1		
15	91353-671-004	O-RING, 14MM(NOK)	1	1	1		





ZD57E0300A

Ref. No.	Part No.	Description	Reqd. QTY			Serial No.	Parts catalogue code
			EC 2000 K1	EC 2000 K2	EC 2200 K3		
16	94050-10000	NUT, FLANGE, 10MM	1	1	1		
17	94101-06800	WASHER, PLAIN, 6MM	2	2	2		
18	94251-08000	PIN, LOCK, 8MM	1	1	1		
19	95701-06012-00	BOLT, FLANGE, 6X12	2	2	2		
20	35480-Z0T-003	SWITCH ASSY., OIL LEVEL	1	1	-		
			-	-	1	3114530	-----

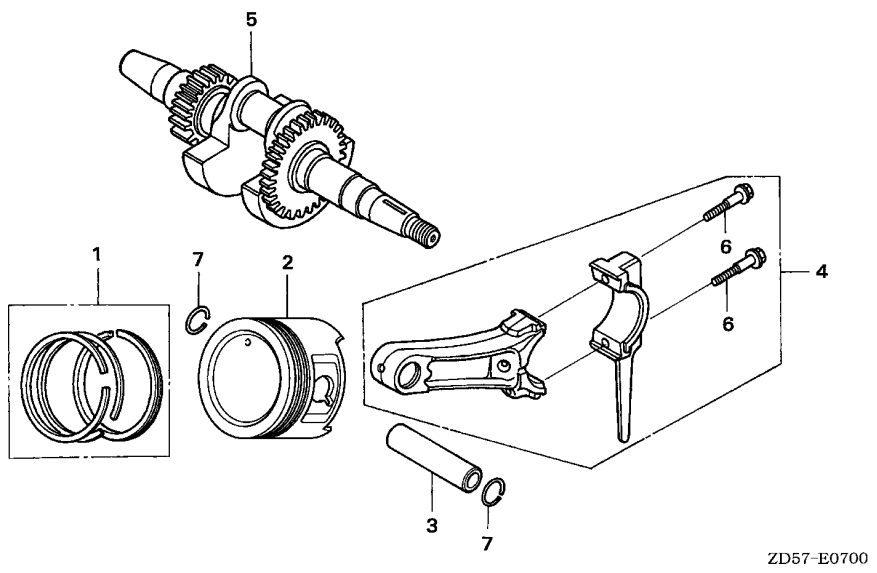


ZD57E0600A

Ref. No.	L.O.N.	(Relative ref. Number) Description	F.R.T.
1	1101F1	COVER, CRANKCASE	1.1
2	1101E9	PACKING, CRANKCASE COVER	1.1
6	1101C0	OIL SEAL, CRANKSHAFT :LEFT ...	1.2
9	1101A5	BEARING, CRANKSHAFT :LEFT	1.2

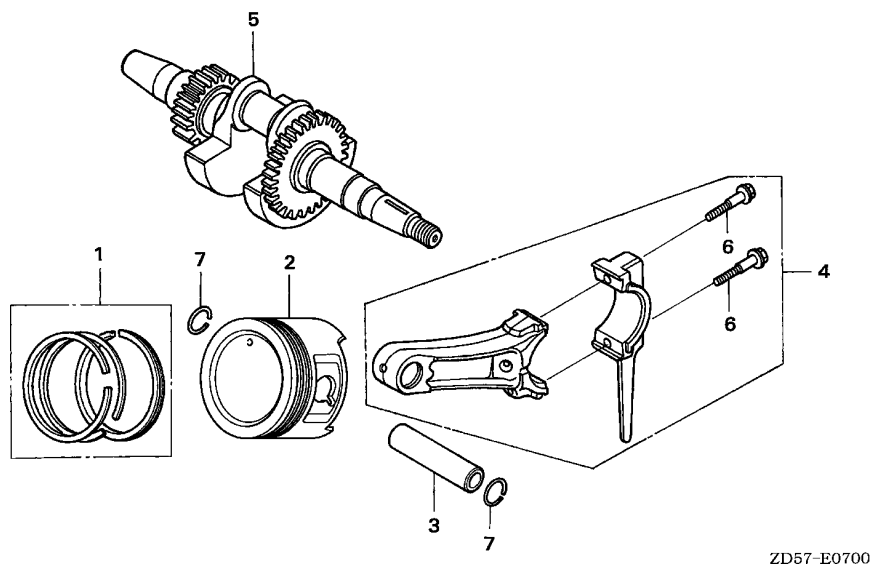
Ref. No.	Part No.	Description	Reqd. QTY			Serial No.	Parts catalogue code
			EC 2000 K1	EC 2000 K2	EC 2200 K3		
1	11300-ZE1-642	COVER ASSY., CRANKCASE	1	-	1		
	11300-Z4M-640	-	1	-		
2	11381-ZH8-801	PACKING, CASE COVER (NON ASBESTOS)	1	1	1		
3	15600-Z0T-810	CAP ASSY., OIL FILLER	1	1	1		
4	15600-Z0T-820	CAP ASSY., OIL FILLER	1	1	1		
5	15625-Z0T-800	PACKING, OIL FILLER CAP	2	2	2		
6	91201-Z0T-801	OIL SEAL, 25X41X6	1	1	1		
7	94301-08140	DOWEL PIN, 8X14	2	2	2		
8	95701-08032-00	BOLT, FLANGE, 8X32	6	6	6		
9	96100-62050-00	BEARING, RADIAL BALL, 6205 ..	1	1	1		





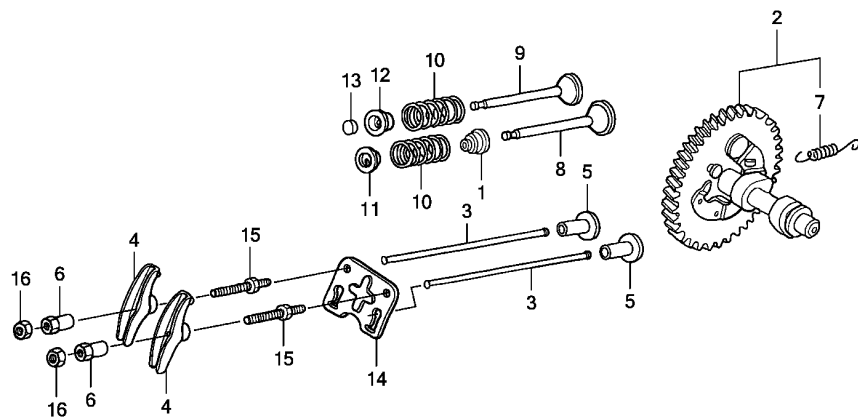
Ref. No.	L.O.N.	(Relative ref. Number) Description	F.R.T.
2	1111R1	(1,3,4) PISTON AND/OR RING SET AND/OR BEARING AND/OR RODINCLUDES: Engine removal and installation	2.4
5	1101F0	CRANKSHAFTINCLUDES: Engine removal and installation	2.2

Ref. No.	Part No.	Description	Reqd. QTY			Serial No.	Parts catalogue code
			EC 2000 K1	EC 2000 K2	EC 2200 K3		
1	13010-Z4K-004	RING SET, PISTON(STD.) (TEIKOKU)	1	-	-		
	13010-Z4M-003	RING SET, PISTON(STD.) (RIKEN)	1	-	-		
	13011-Z4K-004	RING SET, PISTON(O.25) (TEIKOKU)	(1)	-	-		
	13011-Z4M-003	RING SET, PISTON(O.25) (RIKEN)	(1)	-	-		
	13012-Z4K-004	RING SET, PISTON(O.50) (TEIKOKU)	(1)	-	-		
	13012-Z4M-003	RING SET, PISTON(O.50) (RIKEN)	(1)	-	-		
	13013-Z4K-004	RING SET, PISTON(O.75) (TEIKOKU)	(1)	-	-		
	13013-Z4M-003	RING SET, PISTON(O.75) (RIKEN)	(1)	-	-		
	13010-Z4M-801	RING SET, PISTON(STD.) (RIKEN)	-	1	-		
	13010-Z4M-802	RING SET, PISTON(STD.) (TEIKOKU)	-	1	-		
	13010-Z0T-801	RING SET, PISTON(STD.) (RIKEN)	-	-	1	2799811	-----
	13011-Z0T-801	RING SET, PISTON(O.25) (RIKEN)	-	-	(1)	2799811	-----
	13012-Z0T-801	RING SET, PISTON(O.50) (RIKEN)	-	-	(1)	2799811	-----
	13013-Z0T-801	RING SET, PISTON(O.75) (RIKEN)	-	-	(1)	2799811	-----
	13010-Z4K-004	RING SET, PISTON(STD.) (TEIKOKU)	-	-	1	2799812	-----
	13010-Z4M-003	RING SET, PISTON(STD.) (RIKEN)	-	-	1	2799812	-----
	13011-Z4K-004	RING SET, PISTON(O.25) (TEIKOKU)	-	-	(1)	2799812	-----
	13011-Z4M-003	RING SET, PISTON(O.25) (RIKEN)	-	-	(1)	2799812	-----
	13012-Z4K-004	RING SET, PISTON(O.50) (TEIKOKU)	-	-	(1)	2799812	-----
	13012-Z4M-003	RING SET, PISTON(O.50) (RIKEN)	-	-	(1)	2799812	-----



Ref. No.	Part No.	Description	Reqd. QTY			Serial No.	Parts catalogue code
			EC 2000 K1	EC 2000 K2	EC 2200 K3		
(1)	13013-Z4K-004	RING SET, PISTON(0.75) (TEIKOKU)	-	-	(1)	2799812	-----
	13013-Z4M-003	RING SET, PISTON(0.75) (RIKEN)	-	-	(1)	2799812	-----
2	13101-ZH8-020	PISTON(STD.)	1	-	-		
	13102-ZH8-020	PISTON(0.25)	(1)	-	-		
	13103-ZH8-020	PISTON(0.50)	(1)	-	-		
	13104-ZH8-020	PISTON(0.75)	(1)	-	-		
	13101-Z4M-800	PISTON(STD.)	-	1	-		
	13101-Z0T-810	PISTON(STD.)	-	-	1	2799811	-----
	13102-Z0T-810	PISTON(0.25)	-	-	(1)	2799811	-----
	13103-Z0T-810	PISTON(0.50)	-	-	(1)	2799811	-----
	13104-Z0T-810	PISTON(0.75)	-	-	(1)	2799811	-----
	13101-ZH8-020	PISTON(STD.)	-	-	1	2799812	-----
	13102-ZH8-020	PISTON(0.25)	-	-	(1)	2799812	-----
	13103-ZH8-020	PISTON(0.50)	-	-	(1)	2799812	-----
	13104-ZH8-020	PISTON(0.75)	-	-	(1)	2799812	-----
3	13111-ZE1-000	PIN, PISTON	1	-	1		
	13111-Z4M-000	PIN, PISTON	-	1	-		
4	13200-Z0T-800	ROD ASSY., CONNECTING	1	-	1		
	13200-Z4M-000	ROD ASSY., CONNECTING	-	1	-		
5	13310-Z0T-950	CRANKSHAFT COMP.	1	-	1		
	13310-Z4M-950	CRANKSHAFT COMP.	-	1	-		
6	90001-ZE1-000	BOLT, CONNECTING ROD	2	-	2		
	90001-Z4M-000	BOLT, CONNECTING ROD, 6X34.5	-	2	-		
7	90551-ZE1-000	CLIP, PISTON PIN, 18MM	2	2	2		

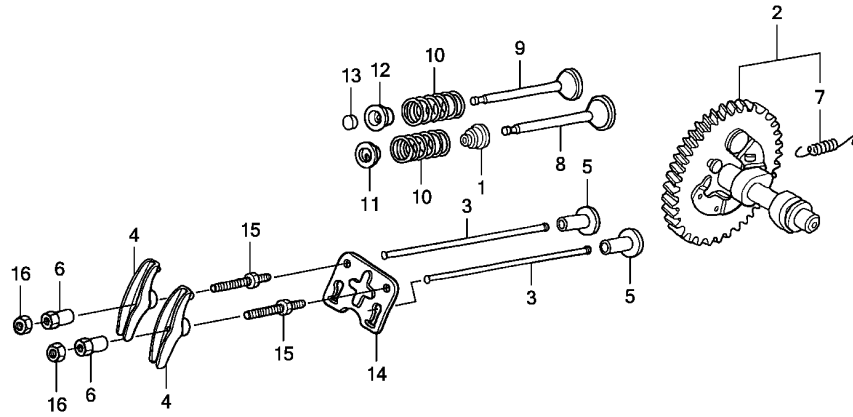




ZD57E0900A

Ref. No.	L.O.N.	(Relative ref. Number) Description	F.R.T.
1	1111K2	SEAL, INTAKE VALVE STEMINCLUDES: Valve clearance adjustment	1.2
2	1111C2	CAMSHAFT	2.1
3	1111L6	ROD, PUSH :INTAKE	0.2
	1111L7	ROD, PUSH :EXHAUST	0.2
	1111L8	ROD, PUSH :BOTH	0.3
4	1111A2	ARM, ROCKER :INTAKE	0.2
	1111A2A	.Replace exhaust rocker arm add	0.1
	1111A1	ARM, ROCKER :EXHAUST	0.2
	1111A1A	.Replace intake rocker arm add	0.1
+ 5	1111L9	LIFTER, VALVE :INTAKE	2.1

Ref. No.	Part No.	Description	Reqd. QTY			Serial No.	Parts catalogue code
			EC 2000 K1	EC 2000 K2	EC 2200 K3		
1	12209-ZH8-003	SEAL, VALVE STEM	1	-	1		
	12209-Z4M-801	-	1	-		
2	14100-Z8K-870	CAMSHAFT ASSY.	1	-	1		
	14100-Z4M-871	-	1	-		
3	14410-ZE1-010	ROD, PUSH	2	-	2		
	14410-Z4M-000	ROD COMP., PUSH	-	2	-		
4	14431-ZE1-000	ARM, VALVE ROCKER	2	2	2		
5	14441-ZE1-010	LIFTER, VALVE	2	2	2		
6	14451-ZE1-013	PIVOT, ROCKER ARM	2	2	2		
7	14568-ZE1-000	SPRING, WEIGHT RETURN	1	1	1		
8	14711-ZF1-000	VALVE, IN.	1	-	1		
	14711-Z4M-000	-	1	-		
9	14721-ZF1-000	VALVE, EX.	1	-	1		
	14721-Z4M-000	-	1	-		
10	14751-ZF1-000	SPRING, VALVE	2	2	2		
11	14771-ZE1-000	RETAINER, IN. VALVE SPRING ..	1	1	1		
12	14773-ZE1-000	RETAINER, EX. VALVE SPRING ..	1	-	1		
	14771-ZE1-000	RETAINER, IN. VALVE SPRING .. (EXHAUST SIDE)	-	1	-		
13	14781-ZE1-000	ROTATOR, VALVE	1	-	1		
14	14791-ZE1-010	PLATE, PUSH ROD GUIDE	1	-	1		
	14791-Z4M-000	-	1	-		
15	90012-ZE0-010	BOLT, PIVOT, 8MM	2	2	2		
16	90206-ZE1-000	NUT, PIVOT ADJUSTING	2	2	2		

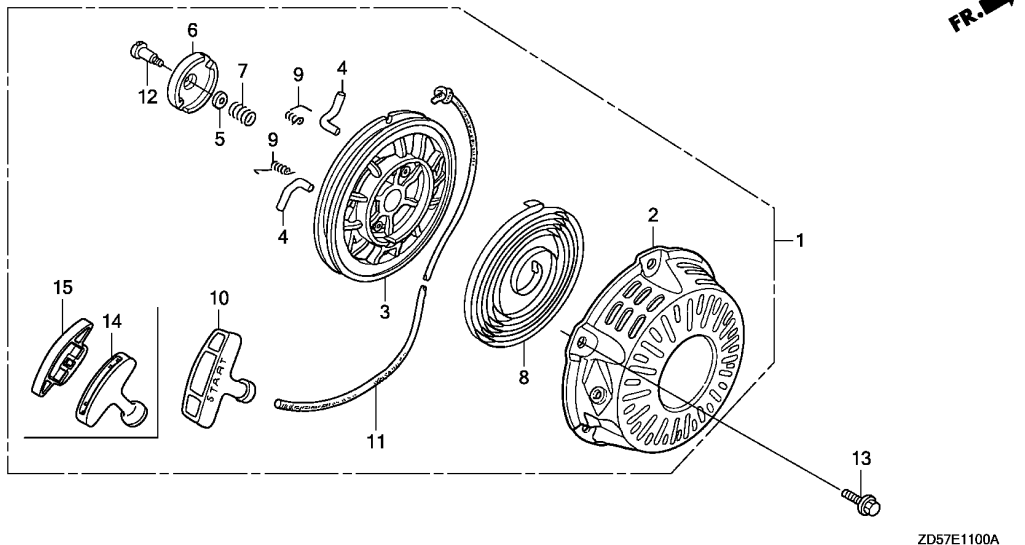


FR. →

ZD57E0900A

Ref. No.	L.O.N.	(Relative ref. Number) Description	F.R.T.
+ 5		.INCLUDES: Valve clearance adjustment	
1111M0		LIFTER, VALVE :EXHAUST	2.1
		.INCLUDES: Valve clearance adjustment	
1111M1		LIFTER, VALVE :BOTH	2.1
		.INCLUDES: Valve clearance adjustment	
8	1111L1	VALVE, INTAKE	1.3
		.INCLUDES: Valve clearance adjustment and reface	
	1111L1E	.Replace intake and exhaust all add	0.1
9	1111L0	VALVE, EXHAUST	1.3
		.INCLUDES: Valve clearance adjustment and reface	
	1111L0E	.Replace intake and exhaust all add	0.1
13	1111J7	ROTATOR, VALVE	0.2
		.INCLUDES: Valve clearance adjustment	

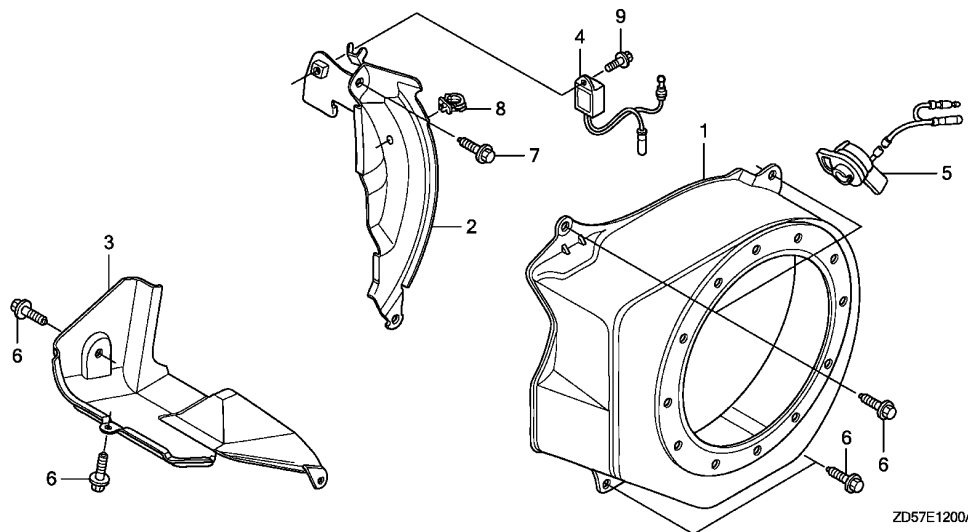
2



ZD57E1100A

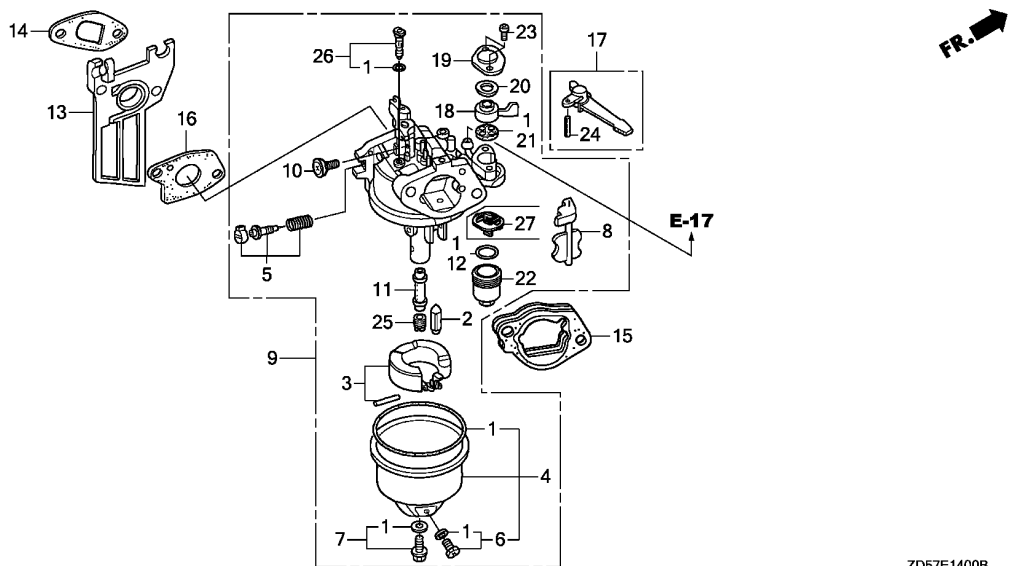
Ref. No.	L.O.N.	(Relative ref. Number) Description	F.R.T.
1	1121B9	STARTER, RECOIL	0.1
3	1121B1	REEL, RECOIL STARTER	0.3
4	1121B0	STARTER RATCHET AND/OR SPRING .NOTE: Same time for two units (7)	0.2
6	1121A4	GUIDE, RATCHET	0.2
8	1121B7	SPRING, RECOIL STARTER RETURN	0.3
11	1121B3	ROPE, RECOIL STARTER	0.3

Ref. No.	Part No.	Description	Reqd. QTY			Serial No.	Parts catalogue code
			EC 2000 K1	EC 2000 K2	EC 2200 K3		
1	28400-ZH8-023ZG	STARTER ASSY., RECOIL *NH105*...MAT BLACK (#15-#20)	1	-	1		
	28400-Z4M-003ZC	*NH1*.....BLACK	-	1	-		
2	28410-ZH8-003ZG	CASE COMP., RECOIL STARTER *NH105*...MAT BLACK (#15-#20)	1	-	1		
	28410-Z4M-003ZD	*NH1*.....BLACK	-	1	-		
3	28421-ZH8-801	REEL, RECOIL STARTER(BLACK)	1	-	1		
	28421-Z0T-003	REEL, RECOIL STARTER	-	1	-		
4	28422-ZH8-801	RATCHET, STARTER	2	2	2		
5	28431-ZH8-801	PLATE, FRICTION	1	1	1		
6	28433-ZH8-801	GUIDE, RATCHET	1	1	1		
7	28441-ZH8-801	SPRING, FRICTION	1	1	1		
8	28442-ZH8-003	SPRING, RECOIL STARTER	1	1	1		
9	28443-ZH8-801	SPRING, RETURN	2	2	2		
10	28461-ZH8-003	GRIP, STARTER	1	-	1		
11	28462-ZH8-003	ROPE, RECOIL STARTER	1	1	1		
12	90003-ZH8-801	SCREW, SETTING	1	1	1		
13	90008-ZE2-003	BOLT, FLANGE, 6X10	3	3	3		
14	28461-Z4M-003	KNOB, RECOIL STARTER	-	1	-		
15	28463-Z4M-003	KNOB, REINFORCEMENT	-	1	-		



Ref. No.	L.O.N.	(Relative ref. Number) Description	F.R.T.
1	1141G8	COVER, ENGINE COOLING FAN	0.2
2	1121A7	PLATE, SIDE	0.3
3	4141E3	SHROUD, ENGINE	0.2
4	6151A0	ALERT UNIT, ENGINE OIL	0.2
5	6151D9	SWITCH, ENGINE STOP	0.2

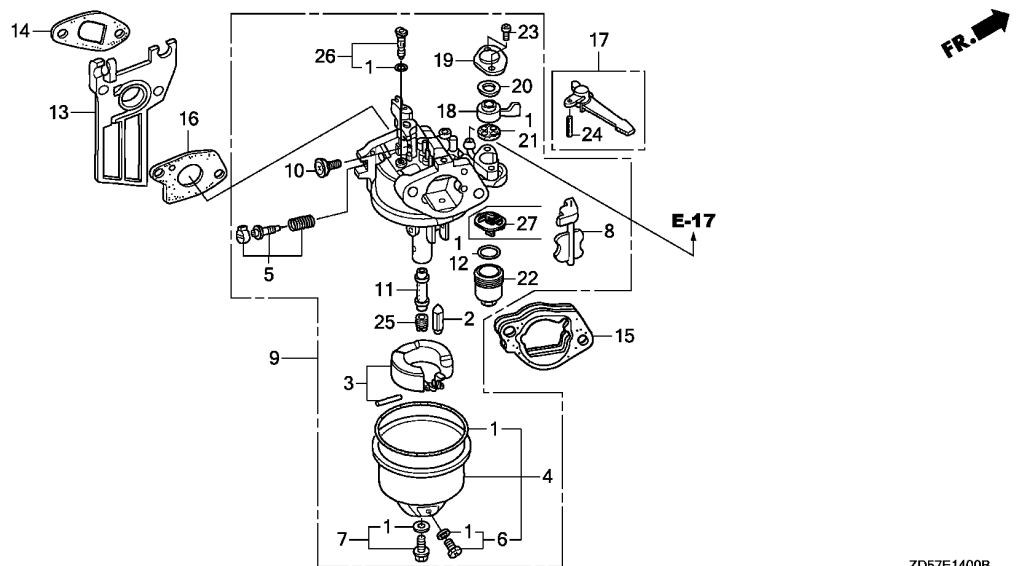
Ref. No.	Part No.	Description	Reqd. QTY			Serial No.	Parts catalogue code
			EC 2000 K1	EC 2000 K2	EC 2200 K3		
1	19610-ZE1-010ZG	COVER COMP., FAN	1	-	-		
		NH105...MAT BLACK (#15-#20)					
	19610-Z4M-000ZB	*NH1*...BLACK	-	1	-		
	19610-ZE1-000ZG	*NH105*...MAT BLACK (#15-#20)	-	-	1	----- 2783540	
	19610-ZE1-010ZG	*NH105*...MAT BLACK (#15-#20)	-	-	1	2783541 -----	
2	19611-ZH8-810	PLATE COMP., SIDE(OIL ALERT)	1	-	1		
	19611-Z4M-810	-	1	-		
3	19630-ZH8-000	SHROUD COMP.	1	-	1		
	19630-Z4M-000	-	1	-		
4	34150-ZH7-003	ALERT UNIT, OIL	1	-	1		
	34150-ZH7-013	-	1	-		
5	35120-Z0T-851	SWITCH ASSY., ENGINE STOP ...	1	1	1		
6	90013-883-000	BOLT, FLANGE, 6X12(CT200) ...	6	6	6		
7	90022-888-010	BOLT, FLANGE, 6X20(CT200) ...	1	1	1		
8	90601-ZH7-013	CLIP, HARNESS	1	1	1		
9	95701-06008-00	BOLT, FLANGE, 6X8	1	1	1		



ZD57E1400B

Ref. No.	L.O.N.	(Relative ref. Number) Description	F.R.T.
1	3111B1	GASKET SET, CARBURETOR (3)	0.3
2	3111E1	FLOAT VALVE SET AND/OR FLOAT SET	0.3
4	3111A3	FLOAT CHAMBER SET AND/OR GASKET	0.2
5	3111D7	SCREW SET, PILOT	0.2
9	3111F3	CARBURETOR (22,27)	0.2
12	3101L6	PACKING, FUEL STRAINER CUP (14)	0.2
13	3111C0	CARBURETOR INSULATOR AND/OR PACKING	0.2
15	3111D9	SPACER, CARBURETOR	0.2
16	3111C8	PACKING, CARBURETOR	0.2
17	8101F9	LEVER, CARBURETOR CHOKE (18,19,20)	0.2
21	3101C5	PACKING, FUEL COCK (11)	0.2
25	3111C3	JET, MAIN	0.3

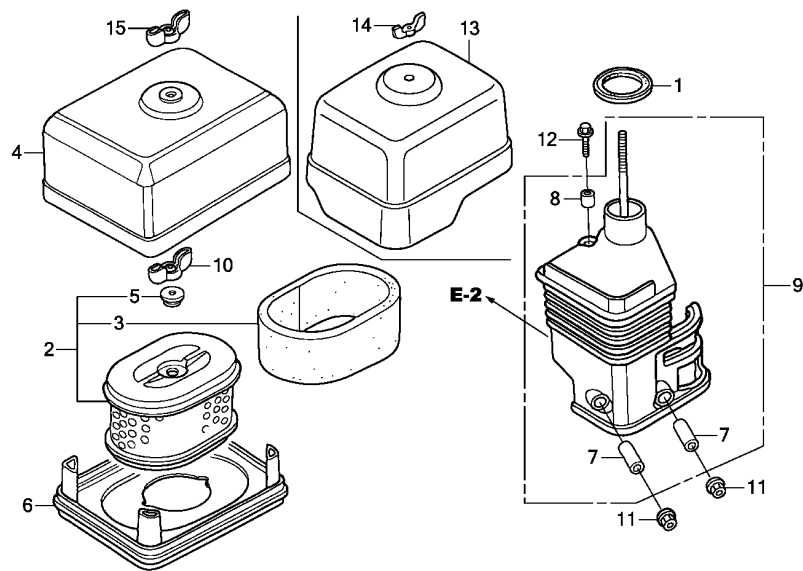
Ref. No.	Part No.	Description	Reqd. QTY			Serial No.	Parts catalogue code
			EC 2000 K1	EC 2000 K2	EC 2200 K3		
1	16010-ZE1-812	GASKET SET	1	1	1		
2	16011-ZE0-005	VALVE SET, FLOAT	1	1	1		
3	16013-Z0S-B01	FLOAT SET	1	1	1		
4	16015-ZE0-831	CHAMBER SET, FLOAT	1	-	1		
	16015-Z4M-911		-	1	-		
5	16016-ZH7-W01	SCREW SET, PILOT	1	1	1		
6	16024-ZE1-811	SCREW SET, DRAIN	1	-	1		
	16024-Z5T-901		-	1	-		
7	16028-ZE0-005	SCREW SET	1	-	1		
	16028-Z5T-901		-	1	-		
8	16044-ZE0-005	CHOKE SET	1	-	1		
	16044-Z4M-911		-	1	-		
9	16100-Z0T-911	CARBURETOR ASSY.(BE65Q A)	1	-	1		
	16100-Z4M-911	CARBURETOR ASSY.(BE54C A)	-	1	-		
10	16124-ZE0-005	SCREW, THROTTLE STOP	1	1	1		
11	16166-ZH8-W50	NOZZLE, MAIN	1	-	1		
	16166-Z4M-911		-	1	-		
12	16173-001-004	PACKING, FUEL STRAINER CUP	1	1	1		
13	16211-ZE1-000	INSULATOR, CARBURETOR	1	-	1		
	16211-Z4M-000		-	1	-		
14	16212-ZH8-800	PACKING, INSULATOR	1	1	1		
15	16220-ZE1-020	SPACER COMP., CARBURETOR	1	1	1		
16	16221-ZH8-801	PACKING, CARBURETOR	1	1	1		
17	16610-ZE1-000	LEVER COMP., CHOKE(STD.)	1	1	1		
18	16953-ZE1-812	LEVER, COCK	1	1	1		
19	16954-ZE1-812	PLATE, LEVER SETTING	1	1	1		



ZD57E1400B

Ref. No.	Part No.	Description	Reqd. QTY			Serial No.	Parts catalogue code
			EC 2000 K1	EC 2000 K2	EC 2200 K3		
20	16956-ZE1-811	SPRING, COCK LEVER	1	1	1		
21	16957-ZE1-812	PACKING, FUEL COCK	1	1	1		
22	16967-ZE0-811	CUP, FUEL STRAINER	1	1	1		
23	93500-03006-1H	SCREW, PAN, 3X6	2	2	2		
24	94305-20122	PIN, SPRING, 2X12	1	1	1		
25	99101-ZH8-0650	JET, MAIN, #65	(1)	(1)	(1)		
	99101-ZH8-0680	JET, MAIN, #68	(1)	(1)	(1)		
	99101-ZH8-0700	JET, MAIN, #70	1	1	1		
26	99204-ZE0-0350	JET SET, PILOT, #35	1	1	1		
27	16959-Z5T-901	FILTER, CUP	-	1	-		

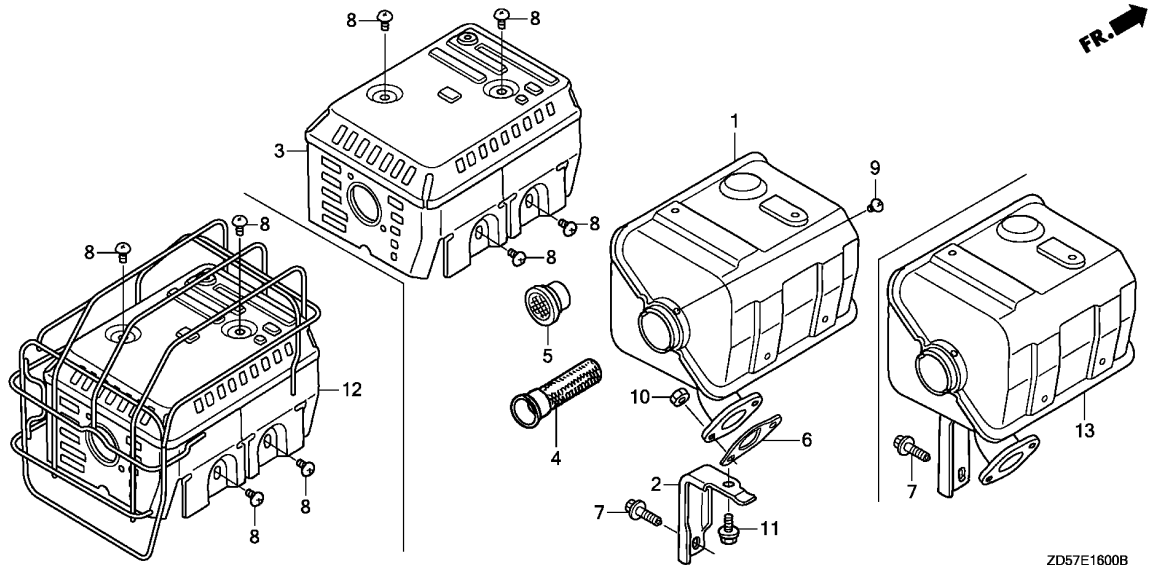




ZD57E1500B

Ref. No.	L.O.N.	(Relative ref. Number) Description	F.R.T.
1	3121E1	PACKING, ELBOW	0.1
2	3121B8	ELEMENT, AIR CLEANER	0.1
		.INCLUDES: Air cleaner element -inspection	
3	3121C1	FILTER, OUTER	0.1
		.INCLUDES: Outer filter-inspection	
6	3121D6	NOSE, SILENCER	0.1
9	3121B4	ELBOW, AIR CLEANER	0.1

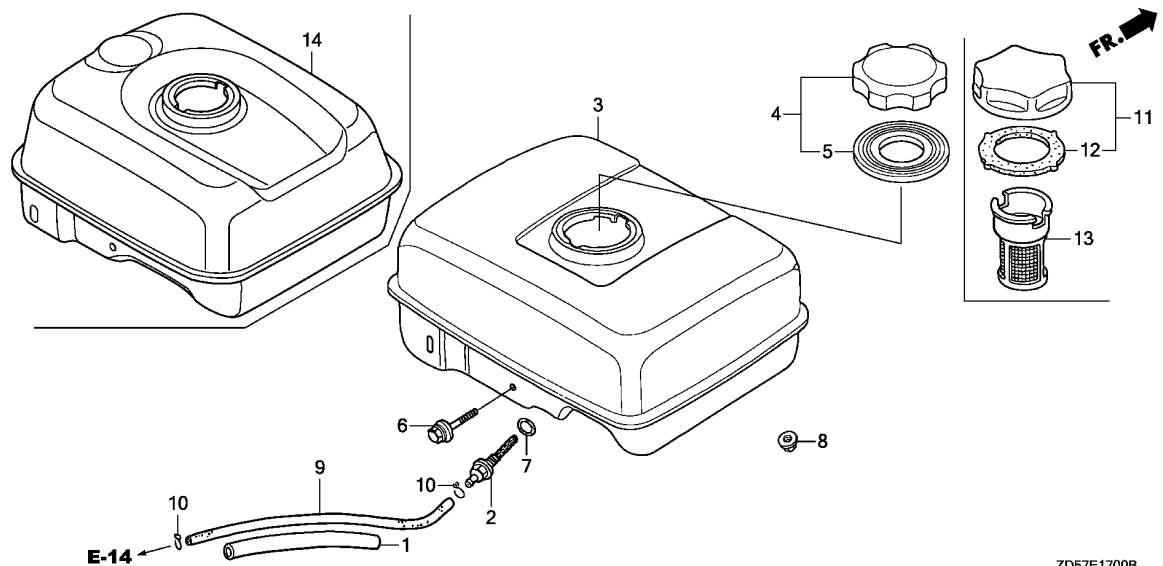
Ref. No.	Part No.	Description	Reqd. QTY			Serial No.	Parts catalogue code
			EC 2000 K1	EC 2000 K2	EC 2200 K3		
1	16271-ZE1-000	PACKING, ELBOW	1	1	1		
2	17210-ZE1-822	ELEMENT, AIR CLEANER(DUAL) ..	1	1	1		
3	17218-ZE1-821	FILTER, OUTER	1	1	1		
4	17230-ZE1-820	COVER, AIR CLEANER(DUAL)	1	-	1		
5	17232-891-000	GROMMET, AIR CLEANER	1	1	1		
6	17235-ZE1-831	NOSE, SILENCER	1	-	1		
	17235-Z4M-830	-	1	-		
7	17238-ZE7-010	COLLAR, AIR CLEANER	2	2	2		
8	17239-ZE1-000	COLLAR B, AIR CLEANER	1	1	1		
9	17410-ZE1-020	ELBOW COMP., AIR CLEANER	1	-	1		
	17410-Z4M-000	-	1	-		
10	90325-044-000	NUT, TOOL BOX SETTING	1	1	1		
11	94050-06000	NUT, FLANGE, 6MM	2	2	2		
12	95701-06020-00	BOLT, FLANGE, 6X20	1	1	1		
13	17231-Z4M-000	COVER, AIR CLEANER	-	1	-		
14	90300-Z1V-000	NUT, AIR CLEANER	-	1	-		
15	90325-044-000	NUT, TOOL BOX SETTING	1	-	1		



Ref. No.	L.O.N.	(Relative ref. Number) Description	F.R.T.
1		(13)	
3131C5		MUFFLER, EXHAUST	0.2
3		(12)	
3131D6		PROTECTOR, EXHAUST MUFFLER ...	0.2
4	3131A1	ARRESTER, SPARK	0.2
		.INCLUDES: Spark arrester check	
5	3131C6	NETTING, WIRE FLANGE	0.2
6	3131B4	GASKET, EXHAUST MUFFLER	0.2

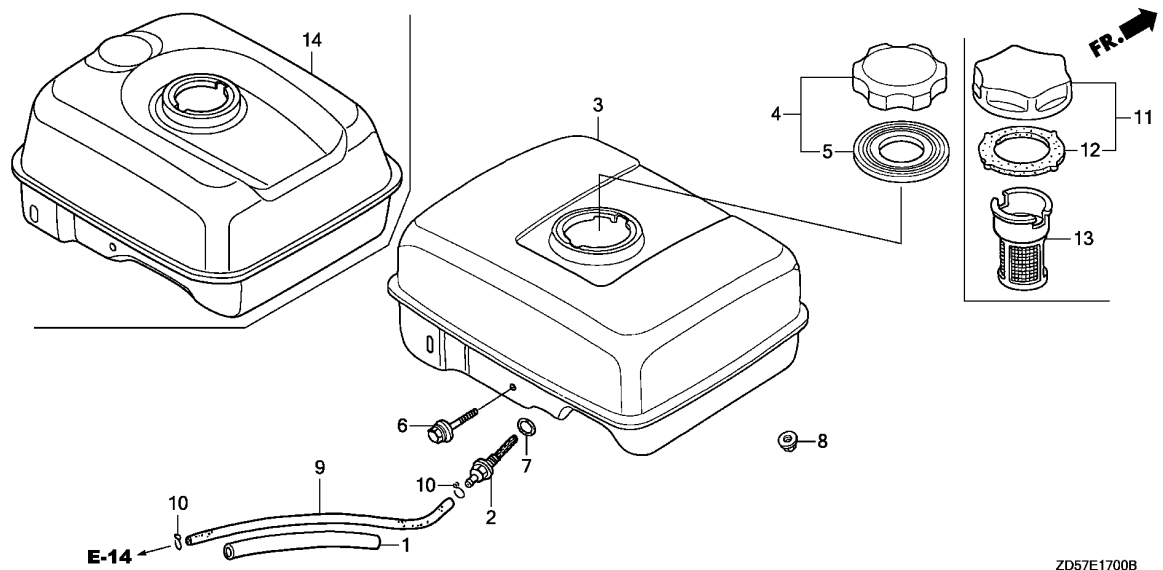
Ref. No.	Part No.	Description	Reqd. QTY			Serial No.	Parts catalogue code
			EC 2000 K1	EC 2000 K2	EC 2200 K3		
1	18310-Z8K-870	MUFFLER COMP.(SILENT)	1	-	1		
	18310-ZH8-810	MUFFLER COMP.(ARRESTER)	(1)	-	(1)		
	18310-Z4M-810	-	(1)	-		
2	18315-ZE1-000	STAY, MUFFLER	1	-	1		
3	18320-ZF1-H51	PROTECTOR, MUFFLER(SILENT) ..	-	-	1	----- 2863753	
4	18355-ZE1-000	ARRESTER, SPARK	(1)	(1)	(1)		
5	18361-ZL0-000	NETTING, WIRE FLANGE	1	1	1		
6	18381-Z0T-801	GASKET, MUFFLER	1	1	-		
	18381-ZH8-800	-	-	1	----- 2607050	
	18381-Z0T-801	-	-	1	2607051 -----	
7	90016-ZE1-000	BOLT, FLANGE, 6X13(CT200) ...	1	1	1		
8	90050-ZE1-000	SCREW, TAPPING, 5X8	4	4	4		
9	90055-ZE1-000	SCREW, TAPPING, 4X6	(1)	(1)	(1)		
	90056-ZL0-000	1	1	1		
10	94001-08000-0S	NUT, HEX., 8MM	2	2	2		
11	95701-06012-00	BOLT, FLANGE, 6X12	1	-	1		
12	18320-ZE1-G92	PROTECTOR, MUFFLER	1	-	1	3647776 -----	
	18320-ZE1-G91	1	-	-	----- 3647775	
	18320-ZE1-G92	-	1	-		
	18320-ZE1-G91	-	-	1	2863754 3647775	
13	18310-Z0T-D30	MUFFLER COMP.(SILENT)	-	1	-		





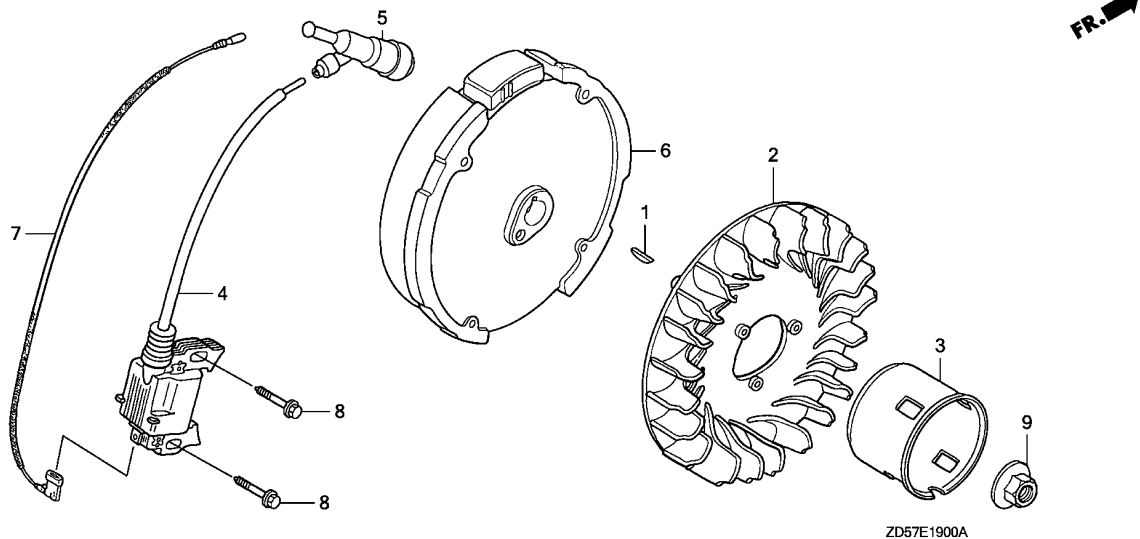
Ref. No.	L.O.N.	(Relative ref. Number) Description	F.R.T.
2	3101H6	JOINT, FUEL STRAINER	0.3
3		(14)	
3	3101H7	TANK, FUEL	0.4
4		(5,11,12)	
4	3101M7	CAP, FUEL FILLER	0.1
9	3101F6	TUBE, FUEL	0.3
13	3101A6	FILTER, FUEL	0.1

Ref. No.	Part No.	Description	Reqd. QTY			Serial No.	Parts catalogue code
			EC 2000 K1	EC 2000 K2	EC 2200 K3		
1	16854-ZH8-000	RUBBER, SUPPORTER(107MM)	1	1	1		
2	16955-ZE1-000	JOINT, FUEL TANK	1	-	1		
	16955-ZE1-010	-	1	-		
3	17510-ZOT-010ZD	TANK COMP., FUEL					
		R280.....POWER RED	1	-	-		
	17510-ZOT-000ZD	*R280*.....POWER RED	-	-	1	----- 3174517	
	17510-ZOT-010ZD	*R280*.....POWER RED	-	-	1	3174518 -----	
4	17620-ZOT-813	CAP COMP., FUEL FILLER (CHROME PLATED)(RADICON)	-	-	1	----- 2863753	
5	17631-ZOT-801	PACKING, FUEL FILLER CAP (39X62X3)(RADICON)	-	-	1	----- 2863753	
6	90004-ZH7-003	BOLT, FLANGE, 6X29	1	1	1		
7	91353-671-004	O-RING, 14MM(NOK)	1	1	1		
8	94050-06000	NUT, FLANGE, 6MM	2	2	2		
9	95001-45140-40	TUBE, FUEL, 4.5X140 (95001-45001-60M)	1	-	1		
	95001-45145-40	TUBE, FUEL, 4.5X145 (95001-45001-60M)	-	1	-		
10	95002-02080	CLIP, TUBE(B8)	2	2	2		
11	17620-ZE1-H03	CAP COMP., FUEL FILLER	1	-	1	2922358 -----	
	17620-ZE1-H02	1	-	-	----- 2922357	
	17620-ZE1-H03	-	1	-		
	17620-ZE1-H02	-	-	1	2863754 2922357	
12	17631-329-003	PACKING, FUEL FILLER CAP (39X58X3)	1	1	-		
		-	-	1	2863754 -----	



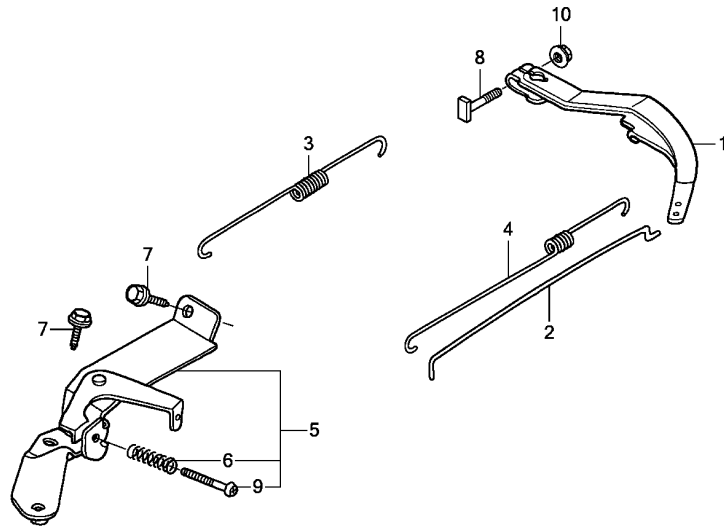
Ref. No.	Part No.	Description	Reqd. QTY			Serial No.	Parts catalogue code
			EC 2000 K1	EC 2000 K2	EC 2200 K3		
13	17670-ZD5-690	FILTER COMP., FUEL	1	1	-	2863754 -----	
14	17510-Z4M-000ZC	TANK COMP., FUEL *R280*.....POWER RED	-	1	-		





Ref. No.	L.O.N.	(Relative ref. Number) Description	F.R.T.
2	1141G7	FAN, ENGINE COOLING	0.4
3	1121A9	PULLEY, RECOIL STARTER	0.4
4	6141A5	COIL, IGNITION(ONE)	0.4
5	6141B8	TERMINAL, HIGH TENSION	0.1
6	2161B5	FLYWHEEL	0.5
7	6111B3	CORD, STOP SWITCH	0.3

Ref. No.	Part No.	Description	Reqd. QTY			Serial No.	Parts catalogue code
			EC 2000 K1	EC 2000 K2	EC 2200 K3		
1	13331-357-000	KEY, SPECIAL WOODRUFF, 25X18	1	1	1		
2	19511-ZE1-000	FAN, COOLING	1	1	1		
3	28451-ZH8-801	PULLEY, STARTER	1	1	1		
4	30500-ZOT-802	COIL ASSY., IGNITION	1	1	-		
	30500-ZOT-801	-	-	1		
5	30700-ZOT-811	CAP ASSY., NOISE SUPPRESSOR -	1	1	1		
6	31100-ZE7-010	FLYWHEEL COMP.(STD.)	1	-	1		
	31110-Z4M-000	FLYWHEEL COMP.	-	1	-		
7	36101-ZE1-010	CORD, STOP SWITCH(370MM)	1	1	1		
8	90121-952-000	BOLT, FLANGE, 6X25(CT200)	2	2	2		
9	90201-ZOT-800	NUT, SPECIAL, 14MM	1	1	1		



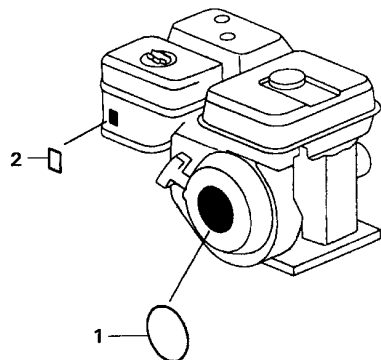
ZD57E2200B

Ref. No.	L.O.N.	(Relative ref. Number) Description	F.R.T.
1	1161A0	ARM, GOVERNOR	0.3
2	1161B1	ROD, GOVERNOR	0.3
3	1161C5	SPRING, GOVERNOR	0.3
4	1161C2	SPRING, THROTTLE RETURN	0.3
5	1161A5	CONTROL, THROTTLE/GOVERNOR ...	0.2

Ref. No.	Part No.	Description	Reqd. QTY			Serial No.	Parts catalogue code
			EC 2000 K1	EC 2000 K2	EC 2200 K3		
1	16551-ZE0-010	ARM, GOVERNOR	1	-	1		
	16551-Z4M-000	-	1	-		
2	16555-ZE1-000	ROD, GOVERNOR	1	-	1		
	16555-Z4M-000	-	1	-		
3	16561-ZH8-D00	SPRING, GOVERNOR	1	-	1		
	16561-Z4M-000	-	1	-		
4	16562-ZE1-020	SPRING, THROTTLE RETURN	1	-	1		
	16562-Z4M-000	-	1	-		
5	16570-ZB2-000	CONTROL ASSY.	1	-	1		
	16500-Z4M-870	-	1	-		
6	16584-883-300	SPRING, CONTROL ADJUSTING ...	1	1	1		
7	90013-883-000	BOLT, FLANGE, 6X12(CT200) ...	2	2	2		
8	90015-ZE5-010	BOLT, GOVERNOR ARM	1	1	1		
9	93500-05035-0A	SCREW, PAN, 5X35	1	1	1		
10	94050-06000	NUT, FLANGE, 6MM	1	1	1		



2



ZD57-E2800

Ref. No.	L.O.N.	(Relative ref. Number) Description	F.R.T.
----------	--------	---------------------------------------	--------

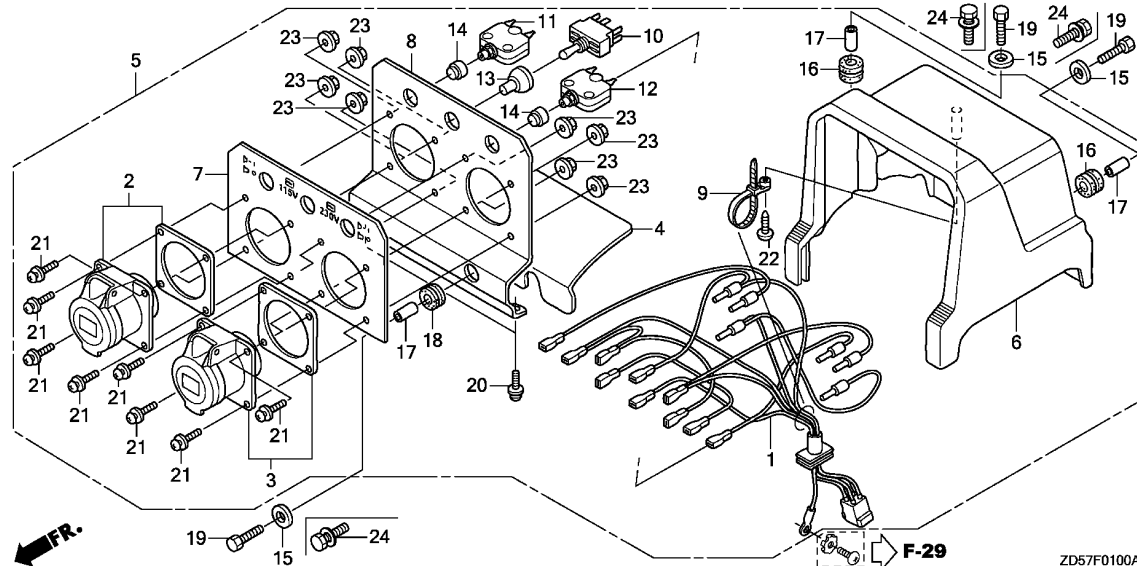
NO INFORMATION

Ref. No.	Part No.	Description	Reqd. QTY			Serial No.	Parts catalogue code
			EC 2000 K1	EC 2000 K2	EC 2200 K3		
1	87521-ZH8-040	EMBLEM(GX160)	1	-	-		
	87531-Z15-000	MARK, HONDA	-	1	-		
	87521-ZH8-030	EMBLEM(GX160 5.5)	-	-	1	----- 2783540	
	87521-ZH8-040	EMBLEM(GX160)	-	-	1	2783541 -----	
2	87528-ZE1-810	MARK, CHOKE	1	-	1		
	87528-Z4M-000	-	1	-		

F-1

CONTROL BOX(B1T)

F 1



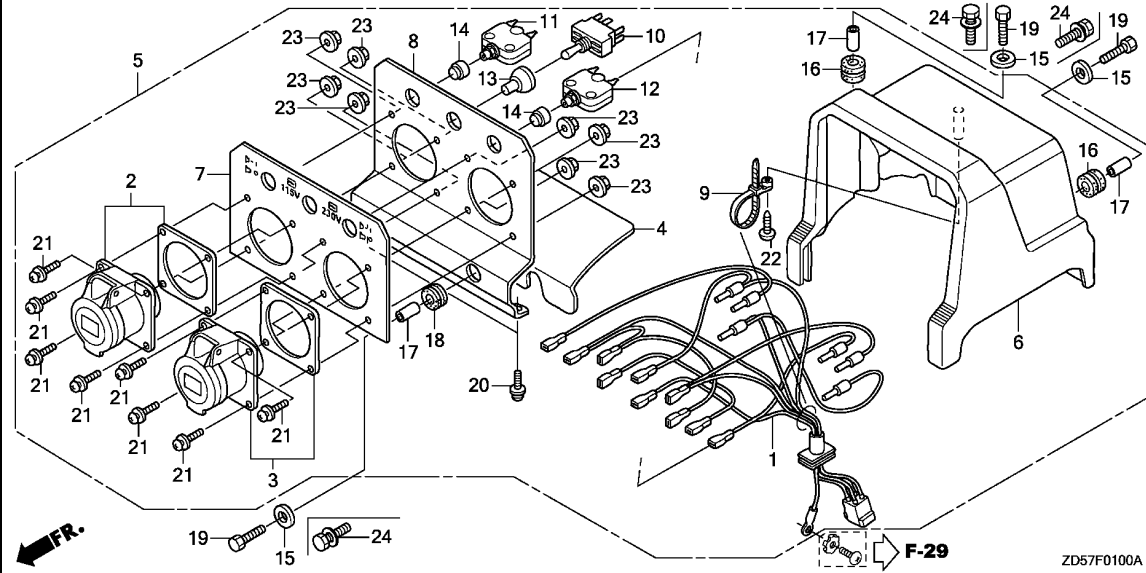
Ref. No.	L.O.N.	(Relative ref. Number) Description	F.R.T.
1	6111C3	HARNESS, MAIN WIRE (2)	0.4
3	6221D5	RECEPTACLE/CONSENT, CONTROL PANEL	0.3
	6221E5	RECEPTACLE/CONSENT, CONTROL PANEL :ALL	0.4
5	6221K1	BOX ASSEMBLY, CONTROL	0.2
6	6221A2	BOX, GENERATOR CONTROL	0.3
10	6151F1	SWITCH, VOLT CHANGE (12)	0.3
11	6131C4	BREAKER, CIRCUIT	0.3
	6131C4A	.Replace one add	0.1

Ref. No.	Part No.	Description	Reqd. QTY			Serial No.	Parts catalogue code
			EC 2000 K1	EC 2000 K2	EC 2200 K3		
1	32130-ZD5-R92	HARNESS ASSY., WIRE(B1)	1	1	1	-----	B1T
2	32331-ZD5-R92	RECEPTACLE(16A/110V)	1	1	1	-----	B1T
3	32332-ZD5-R92	RECEPTACLE(16A/250V)	1	1	1	-----	B1T
4	32335-ZD5-S42	DEFLECTOR	1	1	1	-----	B1T
5	32340-ZD5-R92	BOX ASSY., CONTROL(B1)	1	-	1	-----	B1T
	32340-ZD5-R93	-----	-	1	-	-----	B1T
6	32345-ZD5-S42	BOX, CONTROL	1	1	1	-----	B1T
7	32346-ZD5-R92	PLATE, PANEL(B1)	1	1	1	-----	B1T
8	32347-ZD5-R92	PANEL, BOX(B1)	1	1	1	-----	B1T
9	32902-ZC8-N01	TIE, CABLE(B)	1	1	1	-----	B1T
10	35320-ZD5-R92	SWITCH, VOLT CHANGE	1	1	1	-----	B1T
11	38220-ZD5-R92	BREAKER, CIRCUIT(20A)	1	-	1	-----	B1T
	38230-ZD5-R93	BREAKER, CIRCUIT(16A)	-	1	-	-----	B1T
12	38220-ZD5-S42	BREAKER, CIRCUIT(10A)	1	-	1	-----	B1T
	38230-ZD5-S43	-----	-	1	-	-----	B1T
13	38229-ZD5-R92	CAP, WATER PROTECTION	1	1	1	-----	B1T
14	38229-ZD5-S42	CAP, WATER PROTECTION	2	2	2	-----	B1T
15	90501-ZD5-S42	WASHER, 6MM	3	-	3	-----	B1T
16	90852-898-000	RUBBER, CONTROL BOX	2	2	2	-----	B1T
17	91552-898-000	COLLAR, CONTROL BOX	3	3	3	-----	B1T
18	91651-ZD5-S42	GROMMET	1	1	1	-----	B1T
19	92101-06020-0A	BOLT, HEX., 6X20	3	-	3	-----	B1T
20	93893-05010-18	SCREW-WASHER, 5X10	2	2	2	-----	B1T
21	93893-05016-18	SCREW-WASHER, 5X16	8	8	8	-----	B1T
22	93911-24410	SCREW, TAPPING, 4X16	1	1	1	-----	B1T

F-1

CONTROL BOX(B1T)

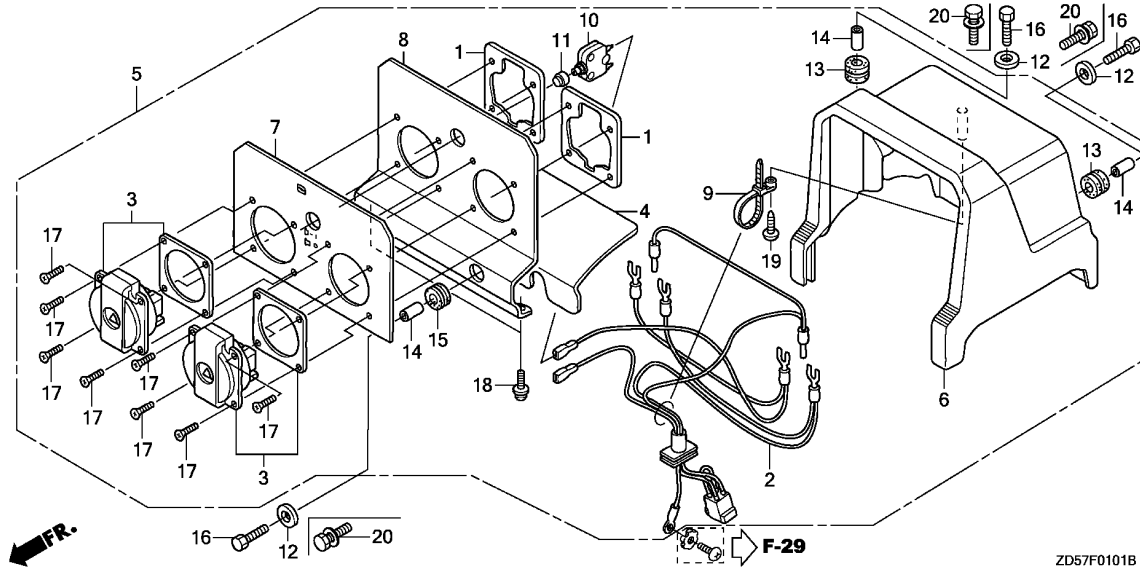
F 2



Ref. No.	Part No.	Description	Reqd. QTY			Serial No.	Parts catalogue code
			EC 2000 K1	EC 2000 K2	EC 2200 K3		

23	94050-05080	NUT, FLANGE, 5MM	8	8	8	-----	B1T
24	93404-06020-00	BOLT-WASHER, 6X20	-	3	-	-----	B1T

3



Ref. No.	L.O.N.	(Relative ref. Number) Description	F.R.T.
2	6111C3	HARNESS, MAIN WIRE (1)	0.4
3	6221D5	RECEPTACLE/CONSENT, CONTROL PANEL	0.3
	6221E5	RECEPTACLE/CONSENT, CONTROL PANEL :ALL	0.4
5	6221K1	BOX ASSEMBLY, CONTROL	0.2
6	6221A2	BOX, GENERATOR CONTROL	0.3
10	6131C4	BREAKER, CIRCUIT	0.3

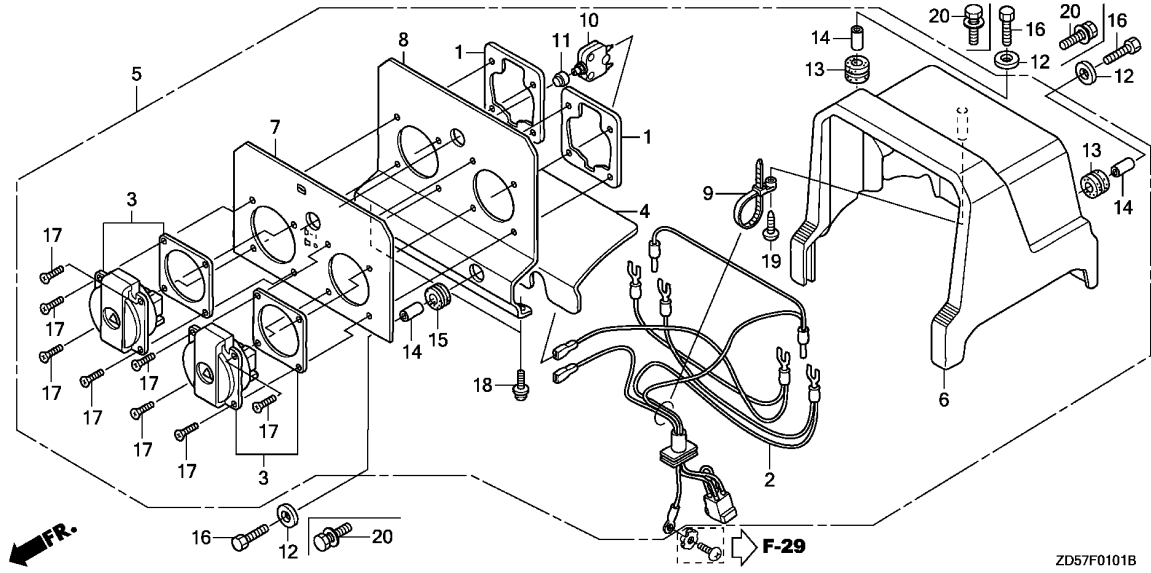
Ref. No.	Part No.	Description	Reqd. QTY			Serial No.	Parts catalogue code
			EC 2000 K1	EC 2000 K2	EC 2200 K3		
1	31426-ZA8-761	PLATE, CONSENT SETTING	2	-	2	FT,GVT,GVWT,WT	
2	32130-ZD5-S42	HARNESS ASSY., WIRE(GV,F)	1	1	1	FT,GVT,GVWT	
	32130-ZD5-U42	HARNESS ASSY., WIRE(W)	1	1	1	WT	
3	32331-ZD5-U42	RECEPTACLE(10A/250V)	2	2	2	WT	
	32331-ZD5-S52	RECEPTACLE(16A/250V)	2	-	2	FT	
	32331-ZD5-S42		2	-	2	GVT,GVWT	
	32332-ZD5-S53		-	2	-	FT	
	32332-ZD5-S43		-	2	-	GVT,GVWT	
4	32335-ZD5-S42	DEFLECTOR	1	1	1	FT,GVT,GVWT,WT	
5	32340-ZD5-S52	BOX ASSY., CONTROL(F)	1	1	1	FT	
	32340-ZD5-S42	BOX ASSY., CONTROL(GV)	1	1	1	GVT,GVWT	
	32340-ZD5-U42	BOX ASSY., CONTROL(W)	1	1	1	WT	
6	32345-ZD5-S42	BOX, CONTROL	1	1	1	FT,GVT,GVWT,WT	
7	32346-ZD5-S42	PLATE, PANEL(GV,F,W)	1	1	1	FT,GVT,GVWT,WT	
8	32347-ZD5-S42	PANEL, BOX(GV,F,W)	1	1	1	FT,GVT,GVWT,WT	
9	32902-ZC8-N01	TIE, CABLE(B)	1	1	1	FT,GVT,GVWT,WT	
10	38220-ZD5-S42	BREAKER, CIRCUIT(10A)	1	-	1	FT,GVT,GVWT,WT	
	38230-ZD5-S43		-	1	-	FT,GVT,GVWT,WT	
11	38229-ZD5-S42	CAP, WATER PROTECTION	1	1	1	FT,GVT,GVWT,WT	
12	90501-ZD5-S42	WASHER, 6MM	3	-	3	FT,GVT,GVWT,WT	
13	90852-898-000	RUBBER, CONTROL BOX	2	2	2	FT,GVT,GVWT,WT	
14	91552-898-000	COLLAR, CONTROL BOX	3	3	3	FT,GVT,GVWT,WT	
15	91651-ZD5-S42	GROMMET	1	1	1	FT,GVT,GVWT,WT	
16	92101-06020-0A	BOLT, HEX., 6X20	3	-	3	FT,GVT,GVWT,WT	
17	93600-04012-1G	SCREW, FLAT, 4X12	8	8	8	FT,GVT,GVWT,WT	
18	93893-05010-18	SCREW-WASHER, 5X10	2	2	2	FT,GVT,GVWT,WT	



F-1-1

CONTROL BOX(FT,GVT,GVWT,WT)

F 4



ZD57F0101B

Ref. No.	Part No.	Description	Reqd. QTY			Serial No.	Parts catalogue code
			EC 2000 K1	EC 2000 K2	EC 2200 K3		

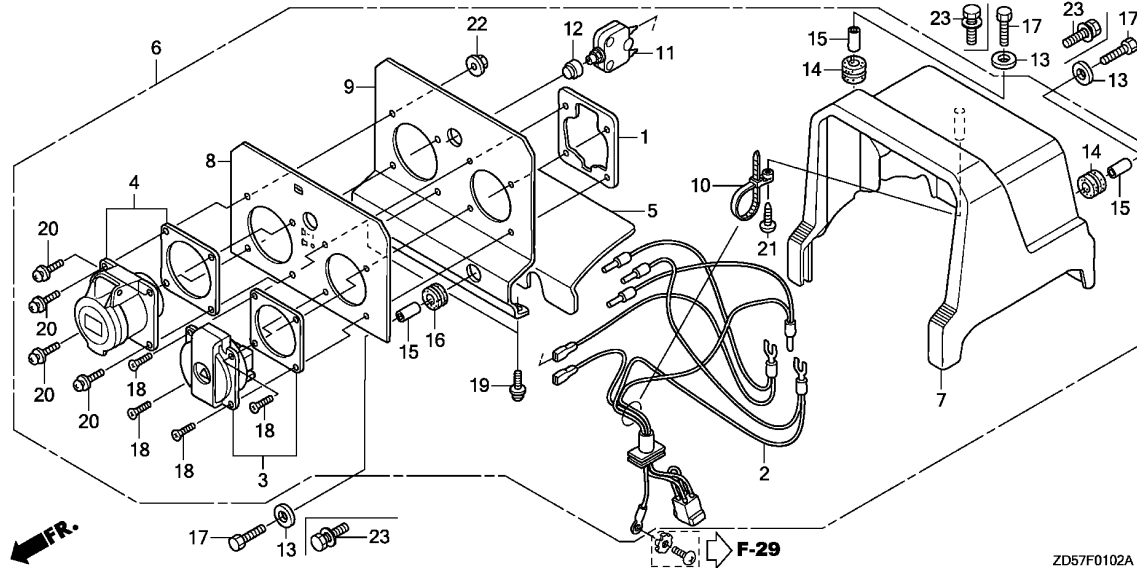
19	93911-24410	SCREW, TAPPING, 4X16	1	1	1	----- FT,GVT,GVWT,WT	
20	93404-06020-00	BOLT-WASHER, 6X20	-	3	-	----- FT,GVT,GVWT,WT	

3

F-1-2

CONTROL BOX(ITT)

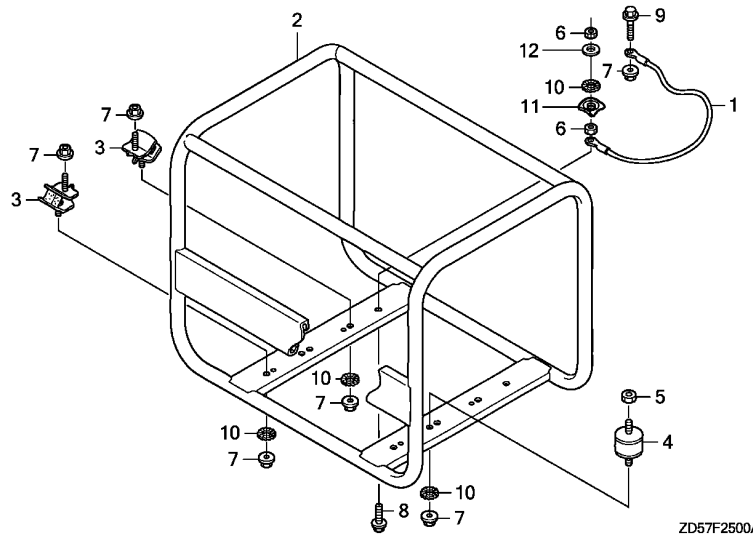
F 5



Ref. No.	L.O.N.	(Relative ref. Number) Description	F.R.T.
2	6111C3	HARNES, MAIN WIRE (1,4)	0.4
3	6221D5	RECEPTACLE/CONSENT, CONTROL PANEL	0.3
	6221E5	RECEPTACLE/CONSENT, CONTROL PANEL :ALL	0.4
6	6221K1	BOX ASSEMBLY, CONTROL	0.2
7	6221A2	BOX, GENERATOR CONTROL	0.3
11	6131C4	BREAKER, CIRCUIT	0.3

Ref. No.	Part No.	Description	Reqd. QTY			Serial No.	Parts catalogue code
			EC 2000 K1	EC 2000 K2	EC 2200 K3		
1	31426-ZA8-761	PLATE, CONSENT SETTING	1	-	1	ITT	
2	32130-ZD5-U52	HARNES ASSY., WIRE(IT)	1	1	1	ITT	
3	32331-ZD5-S42	RECEPTACLE(16A/250V)	1	-	1	ITT	
	32332-ZD5-S43	RECEPTACLE(16A/250V)	-	1	-	ITT	
4	32332-ZD5-R92	RECEPTACLE(16A/250V)	1	1	1	ITT	
5	32335-ZD5-S42	DEFLECTOR	1	1	1	ITT	
6	32340-ZD5-U52	BOX ASSY., CONTROL(IT)	1	1	1	ITT	
7	32345-ZD5-S42	BOX, CONTROL	1	1	1	ITT	
8	32346-ZD5-U52	PLATE, PANEL(IT)	1	1	1	ITT	
9	32347-ZD5-U52	PANEL, BOX(IT)	1	1	1	ITT	
10	32902-ZC8-N01	TIE, CABLE(B)	1	1	1	ITT	
11	38220-ZD5-S42	BREAKER, CIRCUIT(10A)	1	-	1	ITT	
	38230-ZD5-S43	BREAKER, CIRCUIT(10A)	-	1	-	ITT	
12	38229-ZD5-S42	CAP, WATER PROTECTION	1	1	1	ITT	
13	90501-ZD5-S42	WASHER, 6MM	3	-	3	ITT	
14	90852-898-000	RUBBER, CONTROL BOX	2	2	2	ITT	
15	91552-898-000	COLLAR, CONTROL BOX	3	3	3	ITT	
16	91651-ZD5-S42	GROMMET	1	1	1	ITT	
17	92101-06020-0A	BOLT, HEX., 6X20	3	-	3	ITT	
18	93600-04012-1G	SCREW, FLAT, 4X12	4	4	4	ITT	
19	93893-05010-18	SCREW-WASHER, 5X10	2	2	2	ITT	
20	93893-05016-18	SCREW-WASHER, 5X16	4	4	4	ITT	
21	93911-24410	SCREW, TAPPING, 4X16	1	1	1	ITT	
22	94050-05080	NUT, FLANGE, 5MM	4	4	4	ITT	
23	93404-06020-00	BOLT-WASHER, 6X20	-	3	-	ITT	

3

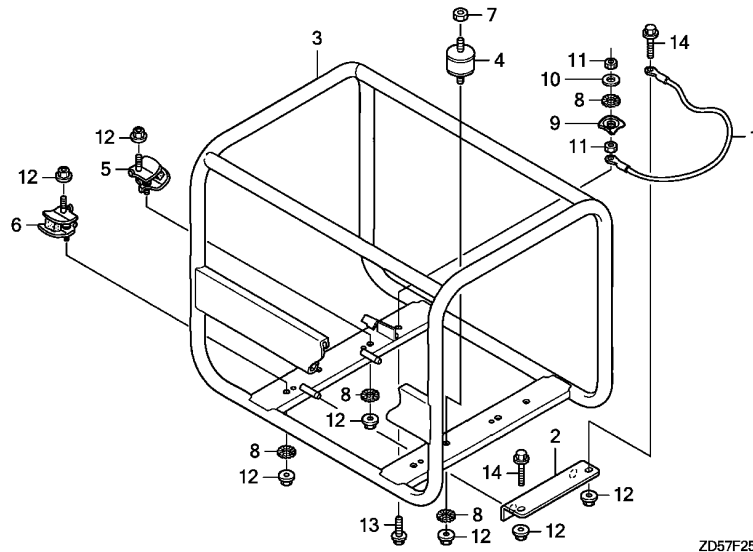


FR.

Ref. No.	L.O.N.	(Relative ref. Number) Description	F.R.T.
1	6111A4	CABLE, EARTH	0.1
2	4101H6	FRAME, MAIN	0.5
		.INCLUDES: Engine removal and installation	
3	4101Y9	RUBBER, ENGINE MOUNTING :RIGHT FRONT	0.4
		.INCLUDES: Engine removal and installation	
		.NOTE: Same time for two units	
	4101Z1	RUBBER, ENGINE MOUNTING :RIGHT REAR	0.4
		.INCLUDES: Engine removal and installation	
		.NOTE: Same time for two units	
4	4101DC	RUBBER, GENERATOR MOUNTING ...	0.2

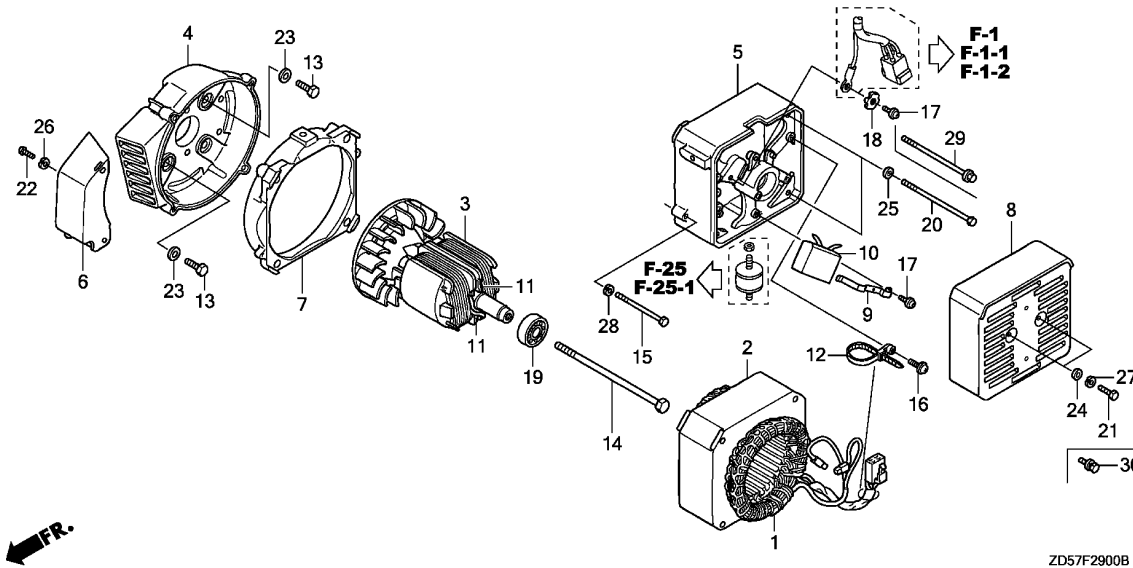
Ref. No.	Part No.	Description	Reqd. QTY			Serial No.	Parts catalogue code
			EC 2000 K1	EC 2000 K2	EC 2200 K3		
1	32601-ZD5-M40	CABLE, EARTH	-	-	1		
2	50310-ZD5-S40	FRAME COMP., GENERATOR	-	-	1		
3	68311-ZD5-S41	RUBBER, ENGINE MOUNTING	-	-	2		
4	68321-ZD5-P41	RUBBER, GENERATOR MOUNTING ..	-	-	1		
5	90303-ZD5-003	NUT, SETTING	-	-	1		
6	94001-08000-0S	NUT, HEX., 8MM	-	-	2		
7	94050-08000	NUT, FLANGE, 8MM	-	-	6		
8	95701-08025-00	BOLT, FLANGE, 8X25	-	-	1		
9	95701-08032-00	BOLT, FLANGE, 8X32	-	-	1		
10	90501-ZD5-003	WASHER, FLANGE	-	-	4		
11	90501-898-000	WASHER, FRAME JOINT	-	-	1		
12	90503-ZP3-000	WASHER, PLAIN, 8MM	-	-	1		

3



Ref. No.	L.O.N.	(Relative ref. Number) Description	F.R.T.
1	6111A4	CABLE, EARTH	0.1
3	4101H6	FRAME, MAIN	0.5
		.INCLUDES: Engine removal and installation	
4	4101DC	RUBBER, GENERATOR MOUNTING ...	0.2
5	4101V4	RUBBER, BOTTOM :RIGHT REAR ...	0.4
		.INCLUDES: Engine removal and installation	
		.NOTE: Same time for two units	
6	4101V1	RUBBER, BOTTOM :RIGHT FRONT ..	0.4
		.INCLUDES: Engine removal and installation	
		.NOTE: Same time for two units or more	

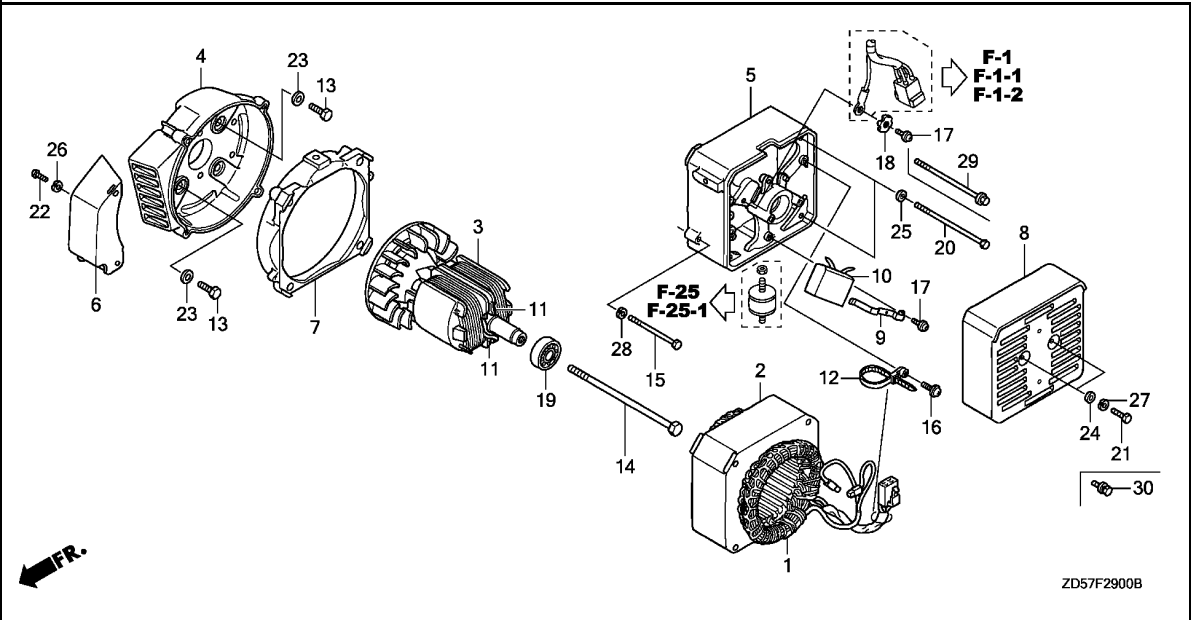
Ref. No.	Part No.	Description	Reqd. QTY			Serial No.	Parts catalogue code
			EC 2000 K1	EC 2000 K2	EC 2200 K3		
1	32601-ZD5-M40	CABLE, EARTH	1	1	-		
2	50138-Z15-000	BRACKET, STOPPER	1	1	-		
3	50310-ZD5-S41	FRAME COMP., GENERATOR	1	1	-		
4	68321-ZD5-P41	RUBBER, GENERATOR MOUNTING ..	1	1	-		
5	68326-Z15-000	RUBBER, FR. BOTTOM	1	1	-		
6	68327-Z15-000	RUBBER, RR. BOTTOM	1	1	-		
7	90303-ZD5-003	NUT, SETTING	1	1	-		
8	90501-ZD5-003	WASHER, FLANGE	4	4	-		
9	90501-898-000	WASHER, FRAME JOINT	1	1	-		
10	90503-ZP3-000	WASHER, PLAIN, 8MM	1	1	-		
11	94001-08000-0S	NUT, HEX., 8MM	2	2	-		
12	94050-08000	NUT, FLANGE, 8MM	7	7	-		
13	95701-08025-00	BOLT, FLANGE, 8X25	1	1	-		
14	95701-08035-00	BOLT, FLANGE, 8X35	2	2	-		



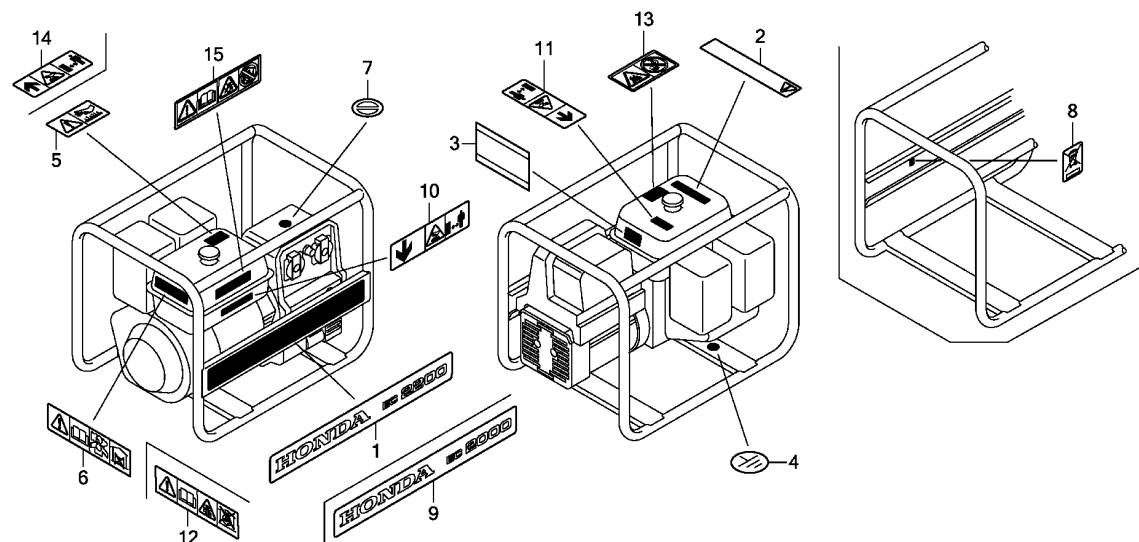
Ref. No.	L.O.N.	(Relative ref. Number) Description	F.R.T.
1	6201B9	STATOR, GENERATOR	0.6
3	6201A9	ROTOR, GENERATOR	1.3
4	6201B5	HOUSING, GENERATOR :FRONT	1.0
5	6201B6	HOUSING, GENERATOR :REAR	0.4
8	6201C7	COVER, GENERATOR END	0.1
10	6141B0	CONDENSER	0.2
19	6201A7	BEARING, GENERATOR ROTOR	1.0

3

Ref. No.	Part No.	Description	Reqd. QTY			Serial No.	Parts catalogue code
			EC 2000 K1	EC 2000 K2	EC 2200 K3		
1	31120-ZD5-S42	STATOR COMP.	1	-	1		
	31120-ZD5-R93	-	1	-	-----	B1T
	31120-ZD5-S42	-	1	-	-----	FT,GVT,GVWT,ITT,WT
2	31127-ZT6-G01	COVER, STATOR	1	1	1		
3	31130-ZD5-S42	ROTOR COMP.	1	1	1		
4	31161-ZD5-S42	HOUSING, FR.	1	1	1		
5	31171-ZD5-S42	HOUSING, RR.	1	-	1		
	31172-ZD5-S43	-	1	-		
6	31173-ZD5-S42	COVER A, FR. HOUSING	1	1	1		
7	31181-ZD5-S42	HOUSING, MIDDLE	1	1	1		
8	31186-ZD5-S42	COVER, GENERATOR END	1	1	1		
9	31427-ZD5-S42	HOLDER, CONDENSER	1	1	1		
10	32381-ZD5-S42	CONDENSER	1	1	1		
11	32385-ZD5-S42	DIODE	2	2	2		
12	32902-ZC8-N01	TIE, CABLE(B)	1	1	1		
13	90101-ZD5-000	BOLT, FLANGE SETTING	4	4	4		
14	90103-ZD5-S42	BOLT(5/16X170)	1	1	1		
15	90105-ZD5-S42	BOLT, HEX., 5X95	2	2	2		
16	90106-ZD5-S42	SCREW, TAPPING, 5X16	1	1	1		
17	90108-ZD5-S42	SCREW, TAPPING, 5X10	2	2	2		
18	90502-ZD5-S42	WASHER, LOCK, 5MM	1	1	1		
19	91051-ZT2-003	BEARING ASSY.(6202DDUCE)	1	1	1		
20	92101-06160-OH	BOLT, HEX., 6X160	4	-	4		
21	92102-05012-0G	BOLT, HEX., 5X12	2	-	2		
22	93500-04012-1H	SCREW, PAN, 4X12	1	1	1		



Ref. No.	Part No.	Description	Reqd. QTY			Serial No.	Parts catalogue code
			EC 2000 K1	EC 2000 K2	EC 2200 K3		
23	94101-08000	WASHER, PLAIN, 8MM	4	4	4		
24	94102-05700	WASHER, PLAIN, 5MM	2	-	2		
25	94103-06800	WASHER, PLAIN, 6MM	4	-	4		
26	94111-04800	WASHER, SPRING, 4MM	1	1	1		
27	94111-05700	WASHER, SPRING, 5MM	2	-	2		
28	94111-05800	WASHER, SPRING, 5MM	2	2	2		
29	90101-ZD5-S43	BOLT, FLANGE, 6X160	-	4	-		
30	90102-ZD5-S43	BOLT-WASHER, 5X12	-	2	-		



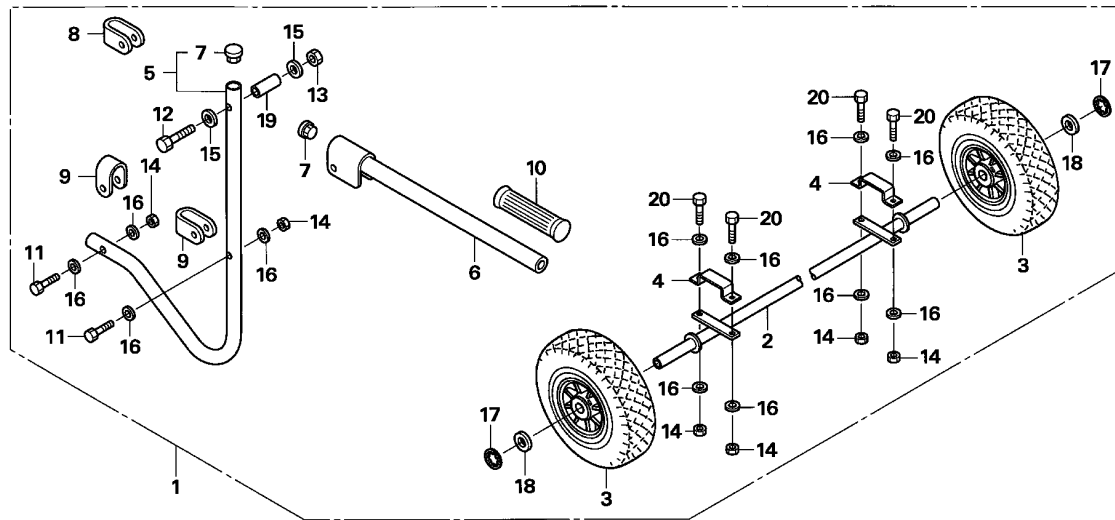
ZD57F3100C

Ref. No. L.O.N. (Relative ref. Number) Description F.R.T.

NO INFORMATION

3

Ref. No.	Part No.	Description	Reqd. QTY			Serial No.	Parts catalogue code
			EC 2000 K1	EC 2000 K2	EC 2200 K3		
1	87101-ZD5-690	MARK, EMBLEM(EC2200)	-	-	1		
2	87106-ZD5-000	MARK, FUEL CAUTION	1	-	1		
3	87152-ZD5-A91	LABEL, SPEC	1	-	-	-----	B1T
	87152-ZD5-A51	1	-	-	-----	FT,GVT,GVWT,ITT,WT
	87152-ZD5-A92	-	1	-	-----	B1T
	87152-ZD5-A52	-	1	-	-----	FT,GVT,GVWT,ITT,WT
	87152-ZD5-691	-	-	1	-----	B1T
	87152-ZD5-751	-	-	1	-----	FT,GVT,GVWT,ITT,WT
4	87534-892-640	MARK, EARTH	1	1	1		
5	87539-ZD5-000	MARK, EX. CAUTION	-	-	1		
6	87561-ZD5-000	MARK, CAUTION(CO)	-	-	1		
7	87563-ZD5-000	MARK, CONNECT CAUTION	1	1	1		
8	87709-Z07-S50	MARK, RECYCLE	1	1	1	-----	GVWT
9	87101-ZD5-A90	MARK, EMBLEM(EC2000)	1	-	-		
	87101-ZD5-C40	MARK, EMBLEM	-	1	-		
10	87539-Z22-A60	MARK, EX. CAUTION	1	1	-		
11	87540-ZD5-690	MARK, HOT CAUTION	1	-	-		
12	87561-ZD5-691	MARK, CAUTION(CO)	1	-	-		
13	87106-ZD5-C40	MARK, FUEL CAUTION	-	1	-		
14	87540-ZD5-C40	MARK, HOT CAUTION	-	1	-		
15	87561-ZD5-692	MARK, CAUTION(CO)	-	1	-		



Ref. No.	L.O.N.	(Relative ref. Number) Description	F.R.T.
1	7101B6	WHEEL KIT	0.6
2	2091E4	SHAFT, WHEEL	0.3
3	7101L5	WHEEL :FRONT	0.1
	7101L6	WHEEL :REAR	0.1
5	8101BK	STAND, TUBE :LEFT	0.2
	8101BL	STAND, TUBE :RIGHT	0.2
6	8101J5	PIPE, HANDLE	0.1
10	4131C3	GRIP, HANDLE	0.1

Ref. No.	Part No.	Description	Reqd. QTY			Serial No.	Parts catalogue code
			EC 2000 K1	EC 2000 K2	EC 2200 K3		
1	06427-ZD5-S40	WHEEL KIT	(1)	-	(1)		
	06427-ZD5-S41	-	(1)	-		
2	42310-ZD5-S40	SHAFT COMP., WHEEL	(1)	(1)	(1)		
3	42700-ZS8-000	WHEEL ASSY.(260X85)	(2)	(2)	(2)		
4	42732-ZD5-S40	HOLDER, SHAFT	(2)	(2)	(2)		
5	51510-ZD5-S40	STAND ASSY., TUBE	(2)	(2)	(2)		
6	53111-ZS8-000	HANDLE	(2)	(2)	(2)		
7	53115-ZS8-000	CAP, HANDLE	(4)	(4)	(4)		
8	53131-ZS8-000	BRACKET, HANDLE	(2)	(2)	(2)		
9	53156-ZS8-000	BRACKET, STAND	(4)	(4)	(4)		
10	53165-ZS8-000	GRIP, HANDLE	(2)	(2)	(2)		
11	90108-ZP3-000	BOLT, HEX., 6X42	(4)	(4)	(4)		
12	90109-ZS8-000	BOLT, HEX., 8X50	(2)	(2)	(2)		
13	90303-ZP3-000	NUT, SELF-LOCK, 8MM	(2)	(2)	(2)		
14	90306-ZP3-000	NUT, SELF-LOCK, 6MM	(8)	(8)	(8)		
15	90503-ZP3-000	WASHER, PLAIN, 8MM	(4)	(4)	(4)		
16	90506-ZP3-000	WASHER, PLAIN, 6MM	(16)	(16)	(16)		
17	90507-ZP3-000	WASHER, LOCK, 20MM	(2)	(2)	(2)		
18	90508-ZP3-000	WASHER, PLAIN, 22MM	(2)	(2)	(2)		
19	91551-ZS8-000	COLLAR, HANDLE	(2)	(2)	(2)		
20	92201-06025-0A	BOLT, HEX., 6X25	(4)	(4)	(4)		

PART NO. INDEX

G 2

Part Number	Address	Page	Ref.	Part Number	Address	Page	Ref.	Part Number	Address	Page	Ref.	Part Number	Address	Page	Ref.
35000				87000				90201-Z0T-800	E1	34	9	93000			
35120-Z0T-851	D10	27	5	87101-ZD5-690	F10	46	1	90206-ZE1-000	D7	24	16	93404-06020-00	F2	38	24
35320-ZD5-R92	F1	37	10	87101-ZD5-A90	F10	46	9	90300-Z1V-000	D13	30	14		F4	40	20
35480-Z0T-003	D3	20	20	87101-ZD5-C40	F10	46	9	90303-ZD5-003	F6	42	5		F5	41	23
				87106-ZD5-000	F10	46	2	90303-ZP3-000	F11	47	13	93500-03006-1H	D12	29	23
36000				87106-ZD5-C40	F10	46	13	90306-ZP3-000	F11	47	14	93500-04012-1H	F8	44	22
36101-ZE1-010	E1	34	7	87152-ZD5-691	F10	46	3	90325-044-000	D13	30	10	93500-05035-0A	E2	35	9
				87152-ZD5-751	F10	46	3					93600-04012-1G	F3	39	17
				87152-ZD5-A51	F10	46	3	90451-ZE1-000	D2	19	10		F5	41	18
38000				87152-ZD5-A52	F10	46	3	90501-898-000	F6	42	11	93893-05010-18	F1	37	20
38220-ZD5-R92	F1	37	11	87152-ZD5-A92	F10	46	3		F7	43	9		F3	39	18
38220-ZD5-S42	F1	37	12	87521-ZH8-030	E3	36	1	90501-ZD5-003	F6	42	10		F5	41	19
	F3	39	10	87521-ZH8-040	E3	36	1		F7	43	8	93893-05016-18	F1	37	21
	F5	41	11	87528-Z4M-000	E3	36	2	90501-ZD5-S42	F1	37	15		F5	41	20
38229-ZD5-R92	F1	37	13	87528-ZE1-810	E3	36	2		F3	39	12	93911-24410	F1	37	22
38229-ZD5-S42	F1	37	14	87531-Z15-000	E3	36	1	90502-ZD5-S42	F8	44	18		F4	40	19
	F3	39	11	87534-892-640	F10	46	4	90503-ZP3-000	F6	42	12		F5	41	21
	F5	41	12	87539-Z22-A60	F10	46	10		F7	43	10	94000			
38230-ZD5-R93	F1	37	11	87539-ZD5-000	F10	46	5		F11	47	15				
38230-ZD5-S43	F1	37	12	87540-ZD5-690	F10	46	11	90506-ZP3-000	F11	47	16	94001-08000-0S	D14	31	10
	F3	39	10	87540-ZD5-C40	F10	46	14	90507-ZP3-000	F11	47	17		F6	42	6
	F5	41	11	87561-ZD5-000	F10	46	6	90508-ZP3-000	F11	47	18		F7	43	11
42000				87561-ZD5-691	F10	46	12	90551-ZE1-000	D6	23	7	94050-05080	F2	38	23
42310-ZD5-S40	F11	47	2	87561-ZD5-692	F10	46	15	90601-ZE1-000	D2	19	11		F5	41	22
42700-ZS8-000	F11	47	3	87563-ZD5-000	F10	46	7	90601-ZH7-013	D10	27	8	94050-06000	D13	30	11
42732-ZD5-S40	F11	47	4	87709-Z07-S50	F10	46	8	90602-ZE1-000	D2	19	12		D15	32	8
				90000				90852-898-000	F1	37	16		E2	35	10
50000				90001-Z4M-000	D6	23	6		F3	39	13	94050-08000	F6	42	7
50138-Z15-000	F7	43	2	90001-ZE1-000	D6	23	6	91000	F5	41	14		F7	43	12
50310-ZD5-S40	F6	42	2	90003-ZH8-801	D9	26	12					94050-10000	D3	20	16
50310-ZD5-S41	F7	43	3	90004-ZH7-003	D15	32	6	91001-Z4X-003	D2	19	13	94101-06800	D3	20	17
				90008-ZE2-003	D9	26	13	91001-ZF1-003	D2	19	13	94101-08000	F9	45	23
				90012-ZE0-010	D7	24	15	91001-ZF1-004	D2	19	13	94102-05700	F9	45	24
51000				90013-883-000	D1	18	9	91051-ZT2-003	F8	44	19	94103-06800	F9	45	25
51510-ZD5-S40	F11	47	5		D10	27	6	91201-Z0T-801	D2	19	14	94111-04800	F9	45	26
				90015-ZE5-010	E2	35	7		D4	21	6	94111-05700	F9	45	27
				90016-ZE1-000	D14	31	7	91353-671-004	D2	19	15	94111-05800	F9	45	28
53000				90022-888-010	D10	27	7		D15	32	7	94251-08000	D3	20	18
53111-ZS8-000	F11	47	6	90043-ZE1-020	D1	18	10	91551-ZS8-000	F11	47	19	94301-08140	D4	21	7
53115-ZS8-000	F11	47	7	90047-ZE1-000	D1	18	11	91552-898-000	F1	37	17	94301-10160	D1	18	12
53131-ZS8-000	F11	47	8	90050-ZE1-000	D14	31	8		F3	39	14	94305-20122	D12	29	24
53156-ZS8-000	F11	47	9	90055-ZE1-000	D14	31	9	91651-ZD5-S42	F1	37	18				
53165-ZS8-000	F11	47	10	90056-ZL0-000	D14	31	9		F5	41	16	95000			
				90101-ZD5-000	F8	44	13		F3	39	15	95001-45140-40	D15	32	9
68000				90101-ZD5-S43	F9	45	29	92000	F5	41	16	95001-45145-40	D15	32	9
68311-ZD5-S41	F6	42	3	90102-ZD5-S43	F9	45	30					95002-02080	D15	32	10
68321-ZD5-P41	F6	42	4	90103-ZD5-S42	F8	44	14	92101-06020-0A	F1	37	19	95701-06008-00	D10	27	9
	F7	43	4	90105-ZD5-S42	F8	44	15		F3	39	16	95701-06012-00	D3	20	19
68326-Z15-000	F7	43	5	90106-ZD5-S42	F8	44	16		F5	41	17		D14	31	11
68327-Z15-000	F7	43	6	90108-ZD5-S42	F8	44	17		F5	41	17	95701-06020-00	D13	30	12
				90108-ZP3-000	F11	47	11	92101-06160-0H	F8	44	20	95701-08025-00	F6	42	8
				90109-ZS8-000	F11	47	12	92102-05012-0G	F8	44	21		F7	43	13
				90121-952-000	E1	34	8	92201-06025-0A	F11	47	20	95701-08032-00	D4	21	8
				90131-ZE1-000	D2	19	9					95701-08035-00	F7	43	14
												95701-08060-00	D1	18	13

4

PART NAME INDEX

H 1

Part name	Address	Page	Ref.	Part name	Address	Page	Ref.	Part name	Address	Page	Ref.
[A]											
ALERT UNIT, OIL	D10	27	4	BOX, CONTROL	F3	39	6	DEFLECTOR	F5	41	5
ARM, GOVERNOR	E2	35	1	BRACKET, HANDLE	F5	41	7	DIODE	F8	44	11
ARM, VALVE ROCKER	D7	24	4	BRACKET, STAND	F11	47	8	DOWEL PIN, 10X16	D1	18	12
ARRESTER, SPARK	D14	31	4	BRACKET, STOPPER	F11	47	9	DOWEL PIN, 8X14	D4	21	7
				BREAKER, CIRCUIT	F7	43	2	[E]			
					F1	37	11				
							12				
					F3	39	10	ELBOW COMP., AIR CLEANER	D13	30	9
					F5	41	11	ELEMENT, AIR CLEANER	D13	30	2
[B]				[C]							
BARREL ASSY., CYLINDER	D2	19	1	CABLE, EARTH	F6	42	1	EMBLEM	E3	36	1
BEARING ASSY.	F8	44	19		F7	43	1	[F]			
BEARING, RADIAL BALL	D2	19	13	CAMSHAFT ASSY.	D7	24	2	FAN, COOLING	E1	34	2
BEARING, RADIAL BALL, 6205	D2	19	13	CAP ASSY., NOISE SUPPRESSOR	E1	34	5	FILTER COMP., FUEL	D16	33	13
	D4	21	9	CAP ASSY., OIL FILLER	D4	21	3	FILTER, CUP	D12	29	27
BOLT	F8	44	14	CAP COMP., FUEL FILLER	D15	32	4	FILTER, OUTER	D13	30	3
BOLT-WASHER, 5X12	F9	45	30				4	FLOAT SET	D11	28	3
BOLT-WASHER, 6X20	F2	38	24				4	FLYWHEEL COMP.	E1	34	6
	F4	40	20	CAP, HANDLE	F11	47	7	FRAME COMP., GENERATOR	F6	42	2
	F5	41	23	CAP, WATER PROTECTION	F1	37	13		F7	43	3
BOLT, CONNECTING ROD	D6	23	6				14	[G]			
BOLT, CONNECTING ROD, 6X34.5	D6	23	6		F3	39	11	GASKET SET	D11	28	1
BOLT, DRAIN PLUG	D2	19	9	CARBURETOR ASSY.	F5	41	12	GASKET, CYLINDER HEAD	D1	18	5
BOLT, FLANGE SETTING	F8	44	13	CASE COMP., RECOIL STARTER	D11	28	9	GASKET, MUFFLER	D14	31	6
BOLT, FLANGE, 6X10	D9	26	13	CHAMBER SET, FLOAT	D9	26	2	GOVERNOR ASSY.	D2	19	3
BOLT, FLANGE, 6X12	D1	18	9	CHAMBER SET, FLOAT	D11	28	4	GRIP, HANDLE	F11	47	10
	D3	20	19	CHOKE SET	D11	28	8	GRIP, STARTER	D9	26	10
	D10	27	6	CLIP, GOVERNOR HOLDER	D2	19	12	GROMMET	F1	37	18
	D14	31	11	CLIP, HARNESS	D10	27	8		F3	39	15
	E2	35	7	CLIP, PISTON PIN, 18MM	D6	23	7		F5	41	16
BOLT, FLANGE, 6X13	D14	31	7	CLIP, TUBE	D15	32	10	GROMMET, AIR CLEANER	D13	30	5
BOLT, FLANGE, 6X160	F9	45	29	CLIP, VALVE GUIDE	D1	18	4	GUIDE, EX. VALVE	D1	18	2
BOLT, FLANGE, 6X20	D10	27	7	COIL ASSY., IGNITION	E1	34	4	GUIDE, IN. VALVE	D1	18	1
	D13	30	12	COLLAR B, AIR CLEANER	D13	30	8	GUIDE, RATCHET	D9	26	6
BOLT, FLANGE, 6X25	E1	34	8	COLLAR, AIR CLEANER	D13	30	7	[H]			
BOLT, FLANGE, 6X29	D15	32	6	COLLAR, CONTROL BOX	F1	37	17	HANDLE	F11	47	6
BOLT, FLANGE, 6X8	D10	27	9		F3	39	14	HARNASS ASSY., WIRE	F1	37	1
BOLT, FLANGE, 8X25	F6	42	8		F5	41	15		F3	39	2
	F7	43	13	COLLAR, HANDLE	F5	41	15		F5	41	2
BOLT, FLANGE, 8X32	D4	21	8	COLLAR, HANDLE	F11	47	19	HEAD COMP., CYLINDER	D1	18	3
	F6	42	9	CONDENSER	F8	44	10	HOLDER, CONDENSER	F8	44	9
BOLT, FLANGE, 8X35	F7	43	14	CONTROL ASSY.	E2	35	5	HOLDER, GOVERNOR WEIGHT	D2	19	5
BOLT, FLANGE, 8X60	D1	18	13	CORD, STOP SWITCH	E1	34	7	HOLDER, SHAFT	F11	47	4
BOLT, GOVERNOR ARM	E2	35	8	COVER ASSY., CRANKCASE	D4	21	1	HOUSING, FR.	F8	44	4
BOLT, HEX., 5X12	F8	44	21	COVER A, FR. HOUSING	F8	44	6	HOUSING, MIDDLE	F8	44	7
BOLT, HEX., 5X95	F8	44	15	COVER COMP., FAN	D10	27	1	HOUSING, RR.	F8	44	5
BOLT, HEX., 6X160	F8	44	20	COVER COMP., HEAD	D1	18	6	[I]			
BOLT, HEX., 6X20	F1	37	19	COVER, AIR CLEANER	D13	30	4	INSULATOR, CARBURETOR	D11	28	13
	F3	39	16				13	[J]			
	F5	41	17	COVER, GENERATOR END	F8	44	8	JET SET, PILOT, #35	D12	29	26
	F11	47	20	COVER, STATOR	F8	44	2				
BOLT, HEX., 6X25	F11	47	11	COVER, STATOR	F8	44	2				
BOLT, HEX., 6X42	F11	47	11	CRANKSHAFT COMP.	D6	23	5				
BOLT, HEX., 8X50	F11	47	12	CUP, FUEL STRAINER	D12	29	22				
BOLT, PIVOT, 8MM	D7	24	15	[D]							
BOLT, STUD, 6X112	D1	18	10	DEFLECTOR	F1	37	4				
BOLT, STUD, 8X32	D1	18	11		F3	39	4				
BOX ASSY., CONTROL	F1	37	5								
	F3	39	5								
	F5	41	6								
BOX, CONTROL	F1	37	6								

PART NAME INDEX

H 2

Part name	Address	Page	Ref.	Part name	Address	Page	Ref.	Part name	Address	Page	Ref.
JET, MAIN, #65	D12	29	25	NUT, SETTING	F6	42	5	RETAINER, IN. VALVE SPRING.....	D7	24	12
JET, MAIN, #68	D12	29	25	NUT, SPECIAL, 14MM	F7	43	7	RING SET, PISTON.....	D5	22	1
JET, MAIN, #70	D12	29	25	NUT, TOOL BOX SETTING.....	E1	34	9	ROD ASSY., CONNECTING.....	D6	23	1
JOINT, FUEL TANK	D15	32	2		D13	30	10	ROD COMP., PUSH.....	D6	23	4
							15	ROD, GOVERNOR.....	D7	24	3
[K]				[O]				ROD, PUSH.....	E2	35	2
KEY, SPECIAL WOODRUFF, 25X18 ..	E1	34	1	OIL SEAL, 25X41X6	D2	19	14	ROPE, RECOIL STARTER.....	D7	24	3
KNOB, RECOIL STARTER	D9	26	14		D4	21	6	ROTATOR, VALVE.....	D9	26	11
KNOB, REINFORCEMENT	D9	26	15	O-RING, 14MM	D2	19	15	ROTOR COMP.....	D7	24	13
					D15	32	7	RUBBER, CONTROL BOX.....	F8	44	3
								RUBBER, ENGINE MOUNTING.....	F1	37	16
[L]				[P]				RUBBER, FR. BOTTOM.....	F3	39	13
LABEL, SPEC	F10	46	3	PACKING, CARBURETOR	D11	28	16	RUBBER, GENERATOR MOUNTING....	F5	41	14
LEVER COMP., CHOKE	D11	28	17	PACKING, CASE COVER	D4	21	2	RUBBER, RR. BOTTOM.....	F6	42	3
LEVER, COCK	D11	28	18	PACKING, ELBOW	D13	30	1	RUBBER, SUPPORTER.....	F7	43	5
LIFTER, VALVE	D7	24	5	PACKING, FUEL COCK	D12	29	21		F7	43	6
				PACKING, FUEL FILLER CAP	D15	32	5		D15	32	1
[M]								[S]			
MARK, CAUTION	F10	46	6	PACKING, FUEL STRAINER CUP	D11	28	12	SCREW-WASHER, 5X10.....	F1	37	20
				PACKING, HEAD COVER	D1	18	7		F3	39	18
MARK, CHOKE	E3	36	2	PACKING, INSULATOR	D11	28	14		F5	41	19
MARK, CONNECT CAUTION	F10	46	7	PACKING, OIL FILLER CAP	D4	21	5	SCREW-WASHER, 5X16.....	F1	37	21
MARK, EARTH	F10	46	4	PANEL, BOX	F1	37	8		F5	41	20
MARK, EMBLEM	F10	46	1		F3	39	8	SCREW SET.....	D11	28	7
				PIN, GOVERNOR WEIGHT	D2	19	6	SCREW SET, DRAIN.....	D11	28	6
MARK, EX. CAUTION	F10	46	5	PIN, LOCK, 8MM	D3	20	18	SCREW SET, PILOT.....	D11	28	5
				PIN, PISTON	D6	23	3	SCREW, FLAT, 4X12.....	F3	39	17
MARK, FUEL CAUTION	F10	46	2	PIN, SPRING, 2X12.....	D12	29	24		F5	41	18
				PISTON	D6	23	2	SCREW, PAN, 3X6.....	D12	29	23
MARK, HONDA	E3	36	1	PIVOT, ROCKER ARM.....	D7	24	6	SCREW, PAN, 4X12.....	F8	44	22
MARK, HOT CAUTION	F10	46	11	PLATE COMP., SIDE.....	D10	27	2	SCREW, PAN, 5X35.....	E2	35	9
				PLATE, CONSENT SETTING	F3	39	1	SCREW, SETTING.....	D9	26	12
MARK, RECYCLE	F10	46	8	PLATE, FRICTION	F5	41	1	SCREW, TAPPING, 4X16.....	F1	37	22
MUFFLER COMP.	D14	31	1	PLATE, LEVER SETTING	D11	28	19		F4	40	19
				PLATE, PANEL	F1	37	7	SCREW, TAPPING, 4X6.....	D14	31	9
					F3	39	7	SCREW, TAPPING, 5X10.....	F8	44	17
[N]				PLATE, PUSH ROD GUIDE.....	D7	24	14	SCREW, TAPPING, 5X16.....	F8	44	16
NETTING, WIRE FLANGE	D14	31	5	PLUG, SPARK	D1	18	14	SCREW, TAPPING, 5X8.....	D14	31	8
NOSE, SILENCER	D13	30	6	PROTECTOR, MUFFLER	D14	31	3	SCREW, THROTTLE STOP.....	D11	28	10
NOZZLE, MAIN	D11	28	11					SEAL, VALVE STEM.....	D7	24	1
NUT, AIR CLEANER	D13	30	14	PULLEY, STARTER	E1	34	3	SHAFT COMP., WHEEL.....	F11	47	2
NUT, FLANGE, 10MM	D3	20	16					SHAFT, GOVERNOR ARM.....	D2	19	8
NUT, FLANGE, 5MM	F2	38	23					SHROUD COMP.....	D10	27	3
	F5	41	22	[R]				SLIDER, GOVERNOR.....	D2	19	7
NUT, FLANGE, 6MM	D13	30	11	RATCHET, STARTER	D9	26	4	SPACER COMP., CARBURETOR.....	D11	28	15
	D15	32	8	RECEPTACLE	F1	37	2	SPRING, COCK LEVER.....	D12	29	20
	E2	35	10					SPRING, CONTROL ADJUSTING....	E2	35	6
NUT, FLANGE, 8MM	F6	42	7		F3	39	3	SPRING, FRICTION.....	D9	26	7
	F7	43	12		F5	41	3	SPRING, GOVERNOR.....	E2	35	3
NUT, HEX., 8MM	D14	31	10					SPRING, RECOIL STARTER.....	D9	26	8
	F6	42	6					SPRING, RETURN.....	D9	26	9
	F7	43	11	REEL, RECOIL STARTER	D9	26	3	SPRING, THROTTLE RETURN.....	E2	35	4
NUT, PIVOT ADJUSTING	D7	24	16	RETAINER, EX. VALVE SPRING	D7	24	12	SPRING, VALVE.....	D7	24	10
NUT, SELF-LOCK, 6MM	F11	47	14	RETAINER, IN. VALVE SPRING	D7	24	11	SPRING, WEIGHT RETURN.....	D7	24	7
NUT, SELF-LOCK, 8MM	F11	47	13								



PART NAME INDEX

Part name	Address	Page	Ref.	Part name	Address	Page	Ref.	Part name	Address	Page	Ref.
STAND ASSY., TUBE	F11	47	5								
STARTER ASSY., RECOIL	D9	26	1								
STATOR COMP.	F8	44	1								
STAY, MUFFLER	D14	31	2								
SWITCH ASSY., ENGINE STOP	D10	27	5								
SWITCH ASSY., OIL LEVEL	D2	19	2								
	D3	20	20								
SWITCH, VOLT CHANGE	F1	37	10								
[T]											
TANK COMP., FUEL	D15	32	3								
	D16	33	14								
TIE, CABLE	F1	37	9								
	F3	39	9								
	F5	41	10								
	F8	44	12								
TUBE, BREATHER	D1	18	8								
TUBE, FUEL, 4.5X140	D15	32	9								
TUBE, FUEL, 4.5X145	D15	32	9								
[V]											
VALVE SET, FLOAT	D11	28	2								
VALVE, EX.	D7	24	9								
VALVE, IN.	D7	24	8								
[W]											
WASHER, 6MM	F1	37	15								
	F3	39	12								
	F5	41	13								
WASHER, DRAIN PLUG, 10.2MM ...	D2	19	11								
WASHER, FLANGE	F6	42	10								
	F7	43	8								
WASHER, FRAME JOINT	F6	42	11								
	F7	43	9								
WASHER, LOCK, 20MM	F11	47	17								
WASHER, LOCK, 5MM	F8	44	18								
WASHER, PLAIN, 22MM	F11	47	18								
WASHER, PLAIN, 5MM	F9	45	24								
WASHER, PLAIN, 6MM	D3	20	17								
	F9	45	25								
	F11	47	16								
WASHER, PLAIN, 8MM	F6	42	12								
	F7	43	10								
	F9	45	23								
	F11	47	15								
WASHER, SPRING, 4MM	F9	45	26								
WASHER, SPRING, 5MM	F9	45	27								
			28								
WASHER, THRUST, 6MM	D2	19	10								
WEIGHT, GOVERNOR	D2	19	4								
WHEEL ASSY.	F11	47	3								
WHEEL KIT	F11	47	1								

1

FOREWORD INDEX

2

ENGINE GROUP

3

FRAME GROUP

4

PART NUMBER INDEX

5

PART NAME INDEX

HONDA
The Power of Dreams



PARTS CATALOGUE NEWS

Honda Motor Co., Ltd.
Customer Service Technology Development Division

PARTS CATALOGUE - CORRECTED

Printed in Japan

CODE NO.	17ZD56F3
PARTS CATALOGUE NEWS	EC2000K1 EC2000K2 EC2200K3
NEWS NO.	001

Block No.	Ref. No.	Note	Part No.	Description	Reqd. QTY			Serial No.	Parts catalogue code
					EC 2000 K1	EC 2000 K2	EC 2200 K3		
E-7	2		13101-ZH8-020	PISTON (STD.).....	1	-	-	----- 4133283	
					-	-	1	2799812 4133283	
	A		13101-Z4M-000	PISTON.....	1	-	1	4133284 -----	
	4	D	13200-ZE1-020	ROD ASSY., CONNECTING (STD.)...	1	-	1	4454860 -----	

NOTE A:PART NO. CHANGE D:NEWLY PROVIDED E:PART NO.DELETION K:REQUIRED NO. CORRECTION L:APPLICATION SERIAL NO. CORRECTION
T:APPLICATION CORRECTION Z:REMARKS CHANGE



PARTS CATALOGUE NEWS

Service Technology Department, Power Products Operations
Service Division, Honda Motor Co., Ltd.

PARTS CATALOGUE - CORRECTED

Printed in Japan

CODE NO.	17ZD56F3
PARTS CATALOGUE NEWS	EC2000K1 EC2000K2 EC2200K3
NEWS NO.	002

(FRANCE-KD)

Block No.	Ref. No.	Note	Part No.	Description	Reqd. QTY			Serial No.	Parts catalogue code						
					EC 2000 K1	EC 2000 K2	EC 2200 K3								
E-7	1	T	13011-Z4K-004	RING SET, PISTON (0.25) (TPR)...	(1)	(1)	-								
					-	-	(1)	2799812	-----						
					T	13011-Z4M-003	RING SET, PISTON (0.25) (RIKEN).	(1)	(1)	-					
								-	-	(1)	2799812	-----			
								T	13012-Z4K-004	RING SET, PISTON (0.50) (TPR)...	(1)	(1)	-		
											-	-	(1)	2799812	-----
T	13012-Z4M-003	RING SET, PISTON (0.50) (RIKEN).	(1)	(1)	-										
			-	-	(1)	2799812	-----								
2	D	D	13102-Z4M-800	PISTON (0.25).....	-	(1)	-								
			13103-Z4M-800	PISTON (0.50).....	-	(1)	-								

NOTE A:PART NO. CHANGE D:NEWLY PROVIDED E:PART NO. DELETION K:REQUIRED NO. CORRECTION L:APPLICATION SERIAL NO. CORRECTION
M:PART DESCRIPTION CORRECTION T:APPLICATION CORRECTION Z:REMARKS CHANGE



PARTS CATALOGUE NEWS

Service Technology Department, Power Products Operations
 Service Division, Honda Motor Co., Ltd.

PARTS CATALOGUE - CORRECTED

Printed in Japan

CODE NO.	17ZD56F3
PARTS CATALOGUE NEWS	EC2000K1 EC2000K2 EC2200K3
NEWS NO.	003

Block No.	Ref. No.	Note	Part No.	Description	Reqd. QTY			Serial No.	Parts catalogue code
					EC 2000 K1	EC 2000 K2	EC 2200 K3		
E-16	1	E	18310-Z4M-810	*PART NO. DELETION					
		D	18310-Z4M-811	MUFFLER COMP. (ARRESTER).....	-	(1)	-		

NOTE A:PART NO. CHANGE D:NEWLY PROVIDED E:PART NO. DELETION K:REQUIRED NO. CORRECTION L:APPLICATION SERIAL NO. CORRECTION
 M:PART DESCRIPTION CORRECTION T:APPLICATION CORRECTION Z:REMARKS CHANGE



PARTS CATALOGUE NEWS

Service Technology Department, Power Products Operations
 Service Division, Honda Motor Co., Ltd.

PARTS CATALOGUE - CORRECTED

Printed in Japan

CODE NO.	17ZD56F3
PARTS CATALOGUE NEWS	EC2000K1 EC2000K2 EC2200K3
NEWS NO.	004

(FRANCE-KD)

Block No.	Ref. No.	Note	Part No.	Description	Reqd. QTY			Serial No.	Parts catalogue code
					EC 2000 K1	EC 2000 K2	EC 2200 K3		
E-15	13	L	17231-Z4M-000	COVER, AIR CLEANER.....	-	1	-	----- 1083026	
		D	17231-Z4M-010	-	1	-	1083027 -----	

NOTE A:PART NO. CHANGE D:NEWLY PROVIDED E:PART NO. DELETION K:REQUIRED NO. CORRECTION L:APPLICATION SERIAL NO. CORRECTION
 M:PART DESCRIPTION CORRECTION T:APPLICATION CORRECTION Z:REMARKS CHANGE



PARTS CATALOGUE NEWS

Service Technology Department, Power Products Operations
 Service Division, Honda Motor Co., Ltd.

PARTS CATALOGUE - CORRECTED

Printed in Japan

CODE NO.	17ZD56F3
PARTS CATALOGUE NEWS	EC2000K1 EC2000K2 EC2200K3
NEWS NO.	005

Block No.	Ref. No.	Note	Part No.	Description	Reqd. QTY			Serial No.	Parts catalogue code
					EC 2000 K1	EC 2000 K2	EC 2200 K3		
E-7	4	A	13200-Z0T-900	ROD ASSY., CONNECTING.....	-	1	-	1452710 -----	
			13200-Z4M-000	-	1	-	----- 1452709	

NOTE A:PART NO. CHANGE D:NEWLY PROVIDED E:PART NO. DELETION K:REQUIRED NO. CORRECTION L:APPLICATION SERIAL NO. CORRECTION
 M:PART DESCRIPTION CORRECTION T:APPLICATION CORRECTION Z:REMARKS CHANGE



PARTS CATALOGUE NEWS

Service Technology Department, Power Products Operations
 Service Division, Honda Motor Co., Ltd.

PARTS CATALOGUE - CORRECTED

Printed in Japan

CODE NO.	17ZD56F3
PARTS CATALOGUE NEWS	EC2000K1 EC2000K2 EC2200K3
NEWS NO.	006

(FRANCE-KD)

Block No.	Ref. No.	Note	Part No.	Description	Reqd. QTY			Serial No.	Parts catalogue code
					EC 2000 K1	EC 2000 K2	EC 2200 K3		
F-31	3	E	87152-ZD5-A51	*PARTS NO. DELETION					
		T	87152-ZD5-A52	LABEL, SPEC.....	1	1	-	-----	FT, GVT, GVWT, ITT, WT
		E	87152-ZD5-A91	*PARTS NO. DELETION					
		T	87152-ZD5-A92	1	1	-	-----	B1T

NOTE A:PART NO. CHANGE D:NEWLY PROVIDED E:PART NO. DELETION K:REQUIRED NO. CORRECTION L:APPLICATION SERIAL NO. CORRECTION
 M:PART DESCRIPTION CORRECTION T:APPLICATION CORRECTION Z:REMARKS CHANGE

April 20, 2017



PARTS CATALOGUE NEWS

Service Technology Department, Power Products Operations
Service Division, Honda Motor Co., Ltd.

PARTS CATALOGUE - CORRECTED

Printed in Japan

CODE NO.	17ZD56F3
PARTS CATALOGUE NEWS	EC2000K1 EC2000K2 EC2200K3
NEWS NO.	007

(FRANCE-KD)

Block No.	Ref. No.	Note	Part No.	Description	Reqd. QTY			Serial No.	Parts catalogue code
					EC 2000 K1	EC 2000 K2	EC 2200 K3		
E-15	9	E	17410-Z4M-000	*PARTS NO. DELETION					
		D	17410-Z4M-010	ELBOW COMP., AIR CLEANER.....	-	1	-		
	13	E	17231-Z4M-000	*PARTS NO. DELETION					
		L	17231-Z4M-010	COVER, AIR CLEANER.....	-	1	-		

NOTE A:PART NO. CHANGE D:NEWLY PROVIDED E:PART NO. DELETION K:REQUIRED NO. CORRECTION L:APPLICATION SERIAL NO. CORRECTION
M:PART DESCRIPTION CORRECTION T:APPLICATION CORRECTION Z:REMARKS CHANGE



PARTS CATALOGUE NEWS

Service Technology Department, Power Products Operations
Service Division, Honda Motor Co., Ltd.

PARTS CATALOGUE - CORRECTED

Printed in Japan

CODE NO.	17ZD56F3
PARTS CATALOGUE NEWS	EC2000K1 EC2000K2 EC2200K3
NEWS NO.	008

(FRANCE-KD)

Block No.	Ref. No.	Note	Part No.	Description	Reqd. QTY			Serial No.	Parts catalogue code
					EC 2000 K1	EC 2000 K2	EC 2200 K3		
E-7	4	D	13200-Z4M-305	ROD ASSY., CONNECTING (UNDER SIZE)	-	(1)	-		
E-12	4	E	34150-ZH7-003	*PART NO. DELETION					
		T	34150-ZH7-013	ALERT UNIT, OIL.....	1	-	1		
		D	34150-ZH7-023	-	1	-		
E-19	5	T	30700-Z0T-811	CAP ASSY., NOISE SUPPRESSOR (NGK)	1	-	1		
		D	30700-Z0T-821	CAP ASSY., NOISE SUPPRESSOR (TEC)	-	1	-		

NOTE A:PART NO. CHANGE D:NEWLY PROVIDED E:PART NO. DELETION K:REQUIRED NO. CORRECTION L:APPLICATION SERIAL NO. CORRECTION
M:PART DESCRIPTION CORRECTION T:APPLICATION CORRECTION Z:REMARKS CHANGE



PARTS CATALOGUE NEWS

Service Technology Department, Power Products Operations
Service Division, Honda Motor Co., Ltd.

PARTS CATALOGUE - CORRECTED

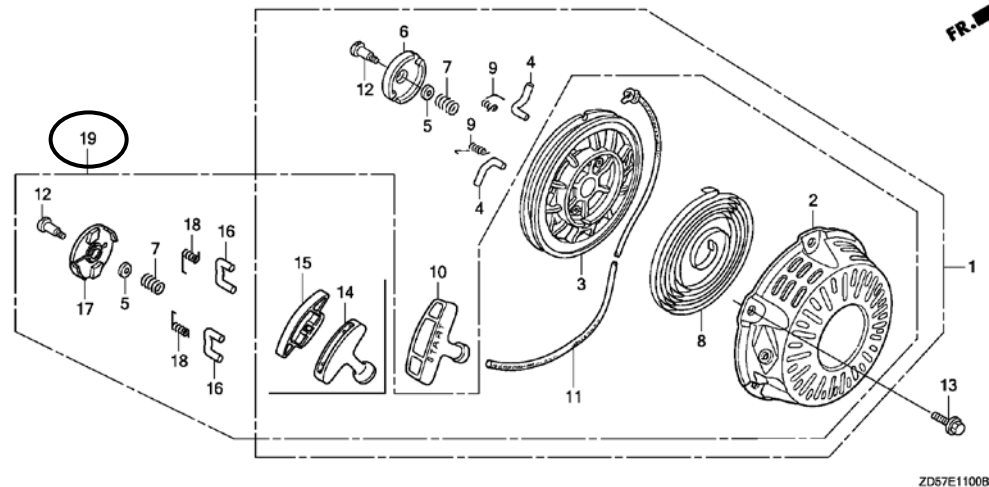
Printed in Japan

CODE NO.	17ZD56F3
PARTS CATALOGUE NEWS	EC2000K1 EC2000K2 EC2200K3
NEWS NO.	009

Block No.	Ref. No.	Note	Part No.	Description	Reqd. QTY			Serial No.	Parts catalogue code
					EC K1	EC 2000 K2	EC 2200 K3		

E-11 RECOIL STARTER

Ref. No.	(Relative ref. Number)	Description	FRT
1	(19)		
1121B9	STARTER, RECOIL	0.1	
4	(9, 16, 18)		
1121B0	STARTER RATCHET AND/OR SPRING	0.2	
	.NOTE: Same time for two units (7, 17)		
6	1121A4	GUIDE, RATCHET	0.2



ZD57E1100B

E-11	1	L	28400-Z4M-003ZC	STARTER ASSY., RECOIL *NH1*.....BLACK	-	1	-	-----	1916816
	3		28421-Z0T-003	REEL, RECOIL STARTER.....	-	1	-	-----	1916816

NOTE A:PART NO. CHANGE D:NEWLY PROVIDED E:PART NO. DELETION K:REQUIRED NO. CORRECTION L:APPLICATION SERIAL NO. CORRECTION
M:PART DESCRIPTION CORRECTION T:APPLICATION CORRECTION Z:REMARKS CHANGE

PARTS CATALOGUE NEWS

BOOKNo. :17ZD56F3

Block No.	Ref. No.	Note	Part No.	Description	Reqd. QTY			Serial No.	Parts catalogue code
					EC 2000 K1	EC 2000 K2	EC 2200 K3		
		A	28421-Z1T-702	REEL, RECOIL STARTER (BLACK)...	-	1	-	1916817	-----
	4	L	28422-ZH8-801	RATCHET, STARTER.....	2	-	2		
					-	2	-	-----	1916816
	6	L	28433-ZH8-801	GUIDE, RATCHET.....	1	-	1		
					-	1	-	-----	1916816
	9	L	28443-ZH8-801	SPRING, RETURN.....	2	-	2		
					-	2	-	-----	1916816
	16	D	28422-Z1T-701	RATCHET, STARTER.....	-	2	-	1916817	-----
	17	D	28433-Z1T-702	GUIDE, RATCHET.....	-	1	-	1916817	-----
	18	D	28443-Z1T-701	SPRING, RETURN.....	-	2	-	1916817	-----
	19	D	28400-Z4M-801ZD	STARTER ASSY., RECOIL *NH1*.....BLACK	-	1	-	1916817	-----
E-12	3		19630-Z4M-000	SHROUD COMP.....	-	1	-	-----	1803966
		A	19630-Z4M-010	-	1	-	1803967	-----

NOTE A:PART NO. CHANGE D:NEWLY PROVIDED E:PART NO. DELETION K:REQUIRED NO. CORRECTION L:APPLICATION SERIAL NO. CORRECTION
M:PART DESCRIPTION CORRECTION T:APPLICATION CORRECTION Z:REMARKS CHANGE

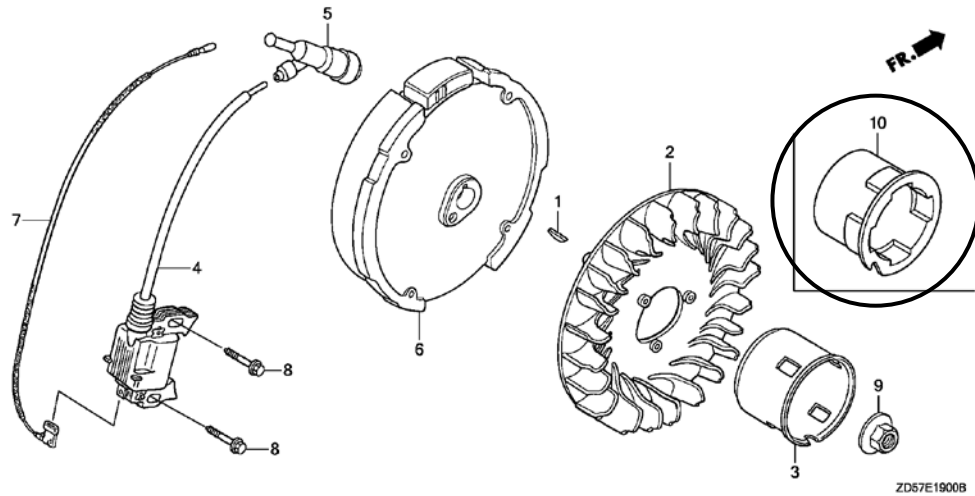
PARTS CATALOGUE NEWS

BOOKNo. :17ZD56F3

Block No.	Ref. No.	Note	Part No.	Description	Reqd. QTY			Serial No.	Parts catalogue code
					EC 2000 K1	EC 2000 K2	EC 2200 K3		

E-19 FLYWHEEL/IGNITION COIL

Ref. No.	(Relative ref. Number)	Description	FRT
3	(10)		
1121A9		PULLEY, RECOIL STARTER	0.4



E-19	3	L	28451-ZH8-801	PULLEY, STARTER.....	1	-	1		
					-	1	-	-----	1916816
	10	D	28451-Z4M-003	PULLEY, STARTER.....	-	1	-	1916817	-----
F-29	13	L	90101-ZD5-000	BOLT, FLANGE SETTING.....	4	-	4		
					-	4	-	-----	1303158
		D	90101-ZD5-690	-	4	-	1303159	-----
F-31	2	L	87106-ZD5-000	MARK, FUEL CAUTION.....	1	-	-	-----	1219999
					-	-	1		
	6	L	87561-ZD5-000	MARK, CAUTION(CO).....	-	-	1	-----	1200009
	12	T	87561-ZD5-691	MARK, CAUTION(CO).....	1	-	-		
					-	-	1	1200010	-----
	13	D	87106-ZD5-010	MARK, FUEL CAUTION.....	1	-	-	1220000	-----

NOTE A:PART NO. CHANGE D:NEWLY PROVIDED E:PART NO.DELETION K:REQUIRED NO. CORRECTION L:APPLICATION SERIAL NO. CORRECTION
M:PART DESCRIPTION CORRECTION T:APPLICATION CORRECTION Z:REMARKS CHANGE

HONDA PARTS CATALOGUE NEWS

Service Information Department, Power Product Operations
Service Division, Honda Motor Co., Ltd.

PARTS CATALOGUE - CORRECTED

CODE NO.	17ZD56F3
PARTS CATALOGUE NEWS	EC2000K1 EC2000K2 EC2200K3
NEWS NO.	010

Block No.	Ref. No.	Note	Part No.	Description	Reqd. QTY			Serial No.	Parts catalogue code
					EC 2000 K1	EC 2000 K2	EC 2200 K3		
E-9	11		14771-ZE1-000	RETAINER, IN. VALVE SPRING....	1	-	1		
					-	1	-	-----	1489730
	A	14771-Z0T-900	RETAINER, VALVE SPRING.....	-	1	-	1489731	-----	
	12		14773-ZE1-000	RETAINER, EX. VALVE SPRING....	1	-	1	-----	3608301
		A	14773-Z4X-000	1	-	1	3608302	-----
			14771-ZE1-000	RETAINER, IN. VALVE SPRING.... (EXHAUST SIDE)	-	1	-	-----	1489730
A	14771-Z0T-900	RETAINER, VALVE SPRING..... (EXHAUST SIDE)	-	1	-	1489731	-----		
E-17	2	L	16955-ZE1-000	JOINT, FUEL TANK.....	1	-	1	-----	3734227
		T	16955-ZE1-010	1	-	1	3734228	-----
					-	1	-		
E-19	7		36101-ZE1-010	CORD, STOP SWITCH (370MM).....	1	-	1		
					-	1	-	-----	1701557
	A	32195-Z0T-003	-	1	-	1701558	-----	
E-22	8		90015-ZE5-010	BOLT, GOVERNOR ARM.....	1	-	1		

NOTE A:PART NO. CHANGE D:NEWLY PROVIDED E:PART NO. DELETION K:REQUIRED NO. CORRECTION L:APPLICATION SERIAL NO. CORRECTION
M:PART DESCRIPTION CORRECTION T:APPLICATION CORRECTION Z:REMARKS CHANGE

PARTS CATALOGUE NEWS

BOOKNo. :17ZD56F3

Block No.	Ref. No.	Note	Part No.	Description	Reqd. QTY			Serial No.	Parts catalogue code
					EC 2000 K1	EC 2000 K2	EC 2200 K3		
					-	1	-	----- 1356757	
		A	90015-Z5T-000	-	1	-	1356758 -----	

NOTE A:PART NO. CHANGE D:NEWLY PROVIDED E:PART NO. DELETION K:REQUIRED NO. CORRECTION L:APPLICATION SERIAL NO. CORRECTION
M:PART DESCRIPTION CORRECTION T:APPLICATION CORRECTION Z:REMARKS CHANGE

HONDA PARTS CATALOGUE NEWS

PARTS CATALOGUE - CORRECTED

CODE NO.	17ZD56F3
PARTS CATALOGUE NEWS	EC2000K1 EC2000K2 EC2200K3
NEWS NO.	011

Block No.	Ref. No.	Note	Part No.	Description	Reqd. QTY			Serial No.	Parts catalogue code
					EC 2000 K1	EC 2000 K2	EC 2200 K3		
E-3	1	E	12000-Z4M-406	*PARTS NO. DELETION					
		D	12000-Z4M-416	BARREL ASSY., CYLINDER (OIL ALERT)	-	1	-		
	14	D	91202-YA0-P01	OIL SEAL, 25X41X6 (ARAI).....	-	1	-		
E-11	1	L	28400-ZH8-023ZG	STARTER ASSY., RECOIL *NH105*... MAT BLACK (#15-#20)	1	-	1	----- 3613051	
		D	28400-ZH8-033ZG	*NH105*... MAT BLACK (#15-#20)	1	-	1	3613052 3955165	
		D	28400-Z0T-003ZG	*NH105*... MAT BLACK (#15-#20)	1	-	1	3955166 -----	
	3	L	28421-ZH8-801	REEL, RECOIL STARTER (BLACK)...	1	-	1	----- 3955165	
		T	28421-Z0T-003	REEL, RECOIL STARTER.....	1	-	1	3955166 -----	
					-	1	-	----- 1916816	
	10			28461-ZH8-003	KNOB, RECOIL STARTER.....	1	-	1	----- 3613051
	A		28461-ZH8-013	1	-	1	3613052 -----	
E-15	2		17210-ZE1-822	ELEMENT, AIR CLEANER (DUAL)....	1	-	1		
					-	1	-	----- 1807742	
		A	17210-Z4M-821	-	1	-	1807743 -----	

NOTE A:PART NO. CHANGE D:NEWLY PROVIDED E:PART NO. DELETION K:REQUIRED NO. CORRECTION L:APPLICATION SERIAL NO. CORRECTION
M:PART DESCRIPTION CORRECTION T:APPLICATION CORRECTION Z:REMARKS CHANGE

PARTS CATALOGUE NEWS

BOOKNo. : 17ZD56F3

Block No.	Ref. No.	Note	Part No.	Description	Reqd. QTY			Serial No.	Parts catalogue code
					EC 2000 K1	EG 2000 K2	EC 2200 K3		
	14		90300-Z1V-000	NUT, AIR CLEANER	-	1	-	----- 1807742	
		A	90300-Z4M-800	-	1	-	1807743 -----	
E-22	3		16561-Z4M-000	SPRING, GOVERNOR	-	1	-	----- 1009080	
		A	16561-Z4M-010	-	1	-	1009081 -----	

NOTE A:PART NO. CHANGE D:NEWLY PROVIDED E:PART NO. DELETION K:REQUIRED NO. CORRECTION L:APPLICATION SERIAL NO. CORRECTION
M:PART DESCRIPTION CORRECTION T:APPLICATION CORRECTION Z:REMARKS CHANGE

HONDA PARTS CATALOGUE NEWS

PARTS CATALOGUE - CORRECTED

CODE NO.	17ZD56F3
PARTS CATALOGUE NEWS	EC2000K1 EC2000K2 EC2200K3
NEWS NO.	012

Block No.	Ref. No.	Note	Part No.	Description	Reqd. QTY			Serial No.	Parts catalogue code	
					EC 2000 K1	EC 2000 K2	EC 2200 K3			
E-11	13		90008-ZE2-003	BOLT, FLANGE, 6X10.....	3	-	3			
						-	3	-	-----	1203112
		A	95701-06008-00	BOLT, FLANGE, 6X8.....	-	3	-	1203113	-----	
E-19	4	L	30500-Z0T-801	COIL ASSY., IGNITION.....	-	-	1	-----	2720572	
		T	30500-Z0T-802	COIL ASSY., IGNITION(TEC).....	1	-	-			
						-	-	1	2720573	-----
		D	30500-Z0T-003	-	1	-			
F-31	12		87561-ZD5-691	MARK, CAUTION(CO).....	1	-	-	-----	1220000	
						-	-	1	1200010	-----
			A	87561-ZD5-692	1	-	-	1220001	-----

NOTE A:PART NO. CHANGE D:NEWLY PROVIDED E:PART NO. DELETION K:REQUIRED NO. CORRECTION L:APPLICATION SERIAL NO. CORRECTION
M:PART DESCRIPTION CORRECTION T:APPLICATION CORRECTION Z:REMARKS CHANGE