

# ***GENERATOR***

EC3600  
EC3600K1  
EC4000K1  
EC4000K2

**PARTS CATALOGUE**

**4**



EC4000K1



EC4000K2

---

FOREWORD INDEX

**1**

---

ENGINE GROUP

**2**

---

FRAME GROUP

**3**

---

PART NUMBER INDEX

**4**

---

PART NAME INDEX

**5**

---



**Instruction for use of parts catalogue**

- **This parts catalogue was prepared based on the latest information available as of July 01, 2011.**
- See the parts catalogue news for any revision that is made after July 01, 2011.
- **Always specify the part number when ordering a part.**
  - Check the model, type, serial numbers, color, maker, and the size as needed before ordering a part.
  - Note that the illustrations (part drawings) can differ from the actual parts in shape. They are given just to help you to refer to the parts.
- **When modifications or additions to this parts catalogue are made, a revised edition will be issued at an appropriate time, with successively progressing revision numbers on the cover. We recommend obtaining such revisions in order to keep your parts catalogue up-to-date at all times. To check whether a parts catalogue revision has been issued, please contact your Honda distributor.**

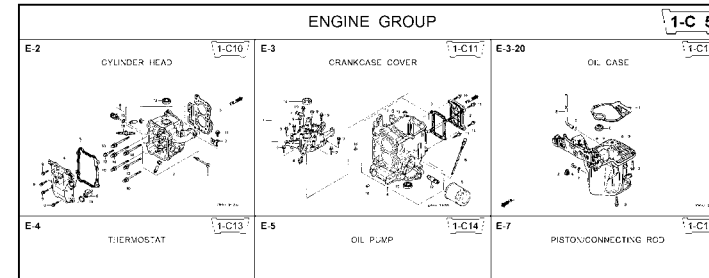
Initial version issue date **October 01, 2004**  
**Honda Motor Co., Ltd.**

**CONTENTS**

	Page	Address No.	
● Instruction for use of parts catalogue .....	1	B 1	<b>1</b>
● How to refer to the part information .....	2	B 2	
● Part catalogue structure .....	3	B 3	
● When the parts were revised.....	4	B 4	
● Abbreviations used in the parts catalogue.....	4	B 4	
● How to check the part block and serial numbers.....	5	B 5	
● Models, parts catalogue codes and applicable serial numbers .....	6	B 6	
● Features of each type.....	8	B 8	
● Fuel hose, general purpose hoses and vinyl hose.....	9	B 9	
● FLAT RATE SERVICE TIME .....	10	B10	
● Illustrated index .....	15	B15	
● ENGINE GROUP.....	19	D 1	<b>2</b>
● FRAME GROUP.....	40	F 1	<b>3</b>
● PART NO. INDEX.....	54	G 1	<b>4</b>
● PART NAME INDEX.....	57	H 1	<b>5</b>

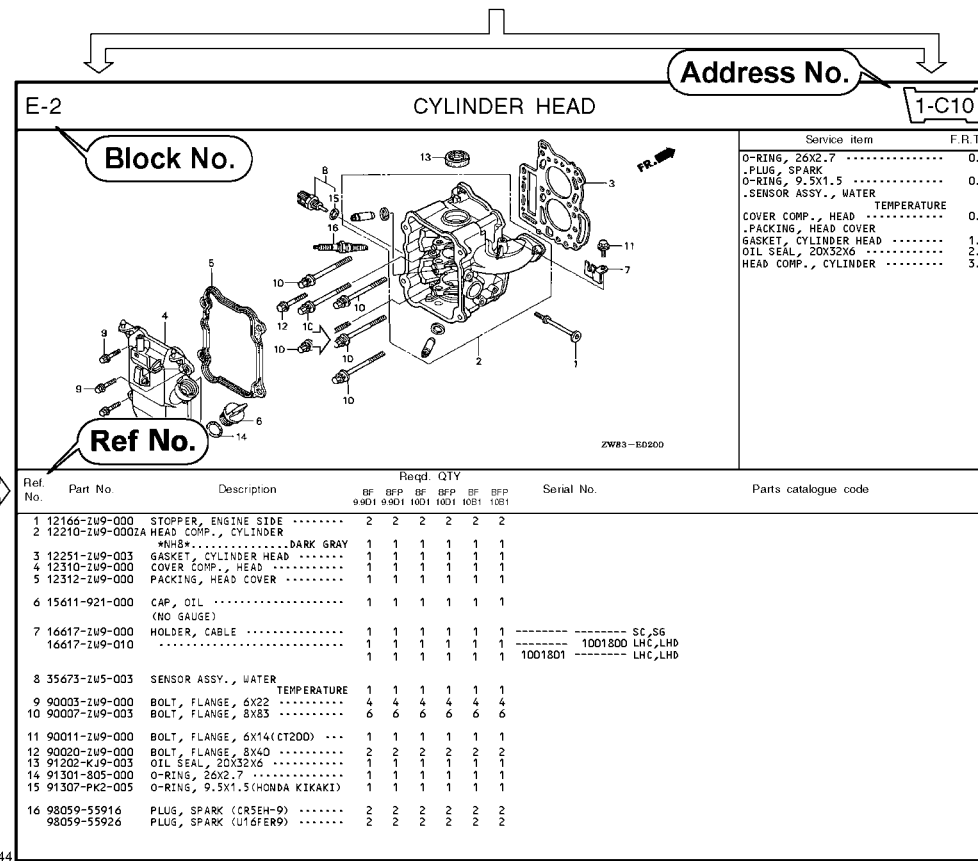
How to refer to the part information

A Reference with "Illustrated index"



B Reference with "Part number index"

PART NO. INDEX					
Part Number	Address	Page	Ref.	Part Number	Address Page
06000				15212-ZW9-000	1-C14 3C
06316-ZW9-000	1-69	88	1	15220-ZW9-003	1-C14 3C
11000				15332-ZW9-000	1-E8 55
11300-ZW9-405	1-C11	27	1	15332-ZW9-A30	1-E11 5E
11300-ZW9-406	1-C11	27	1	15400-PFB-004	1-C11 27
11340-ZW9-000	1-C11	27	2	15422-ZW9-000	1-C14 3C
11342-ZW9-000	1-C11	27	3	15473-881-000	1-C14 3C
11381-ZW9-003	1-C12	28	1	15474-ZW9-000	1-C14 3C
				15611-921-000	1-C10 2E
				15655-ZW9-000	1-C11 27
				16000	
12000				16010-ZV4-005	1-D4 3E
12000-ZW9-405ZA	1-C11	27	4	16011-ZV4-005	1-D4 3E
12155-ZV4-A00	1-C13	29	1	16013-ZW9-003	1-D4 3E
12166-ZW9-000	1-C10	26	1	16016-ZW9-003	1-D4 3E
12209-GB4-681	1-C16	32	1	16016-ZW9-721	1-D4 3E
12210-ZW9-405ZA	1-C10	26	2	16023-ZW9-003	1-D4 3E
12216-ZE2-300	1-E8	55	1	16024-ZV4-650	1-D4 3E
	1-E11	58	1	16028-ZV4-650	1-D4 3E



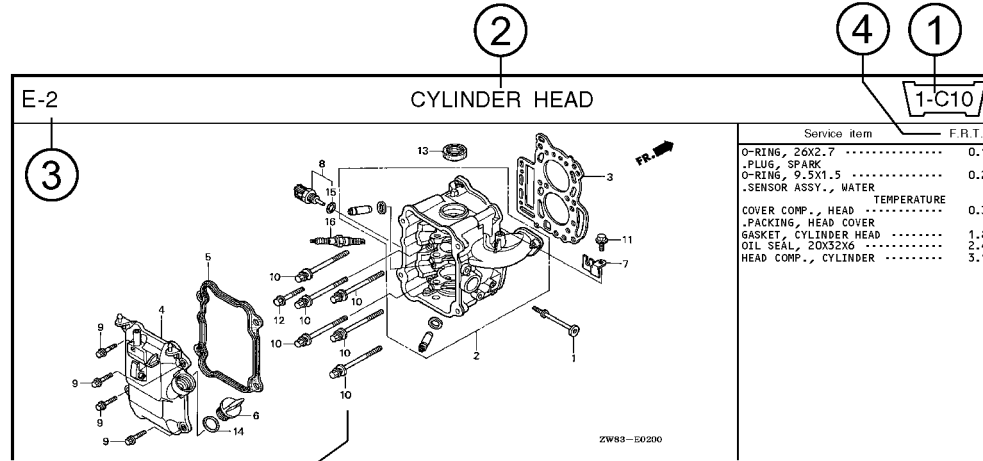
C Reference with "Part name index"

PART NAME INDEX					
Part name	Address	Page	Ref.		
[ A ]					
ABSORBER , FUEL	1-E15	62	5	BOLT ,	
ARMATURE COMP.	1-D11	43	7	BOLT ,	
ARM COMP. , LINK JOINT	1-G6	85	18	BOLT ,	
ARM COMP. , SHIFT LINK	1-G6	85	14	BOLT ,	
ARM COMP. , TILT	1-F15	79	20		
ARM , FUEL PUMP ROCKER	1-C16	32	4		
ARM , REVERSE LOCK	1-F15	79	18		
ARM , SHIFT LINK	1-F11	74	7		
ARM , STOPPER	1-D1	33	12	BOLT ,	
ARM , THROTTLE REMOTE	1-F11	74	6		
ARM , VALVE ROCKER	1-C16	32	3		
[ B ]					
BAG , TOOL , 160MM	1-G5	84	10		
BAND	1-G6	86	37		
BAND B1 , WIRE	1-F6	69	1		
BAND , CORD	1-F3	67	18	BOLT ,	
BAND , TUBE CLIP , 11MM	1-E15	63	20		
BAND , TUBE CLIP , 12.5MM	1-E15	63	19	BOLT ,	

Page No.

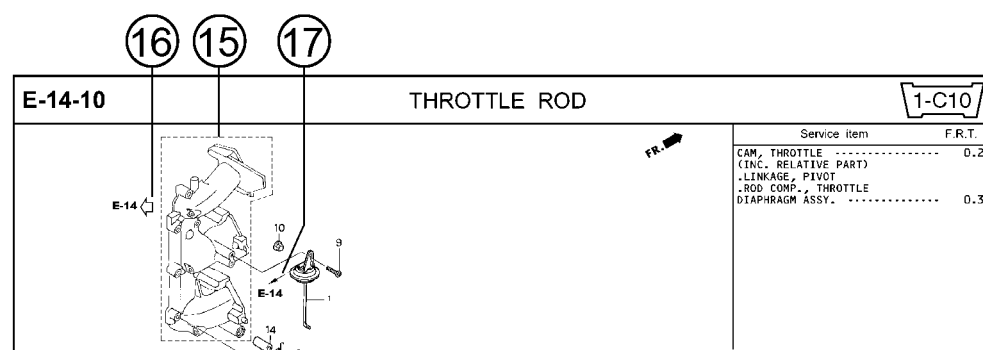
2000.09.20 E

Part catalogue structure



Service item	F.R.T.
O-RING, 26X2.7	0.1
.PLUG, SPARK	0.2
O-RING, 9.5X1.5	0.2
.SENSOR ASSY., WATER	
COVER COMP., HEAD - TEMPERATURE	0.3
.PACKING, HEAD COVER	
GASKET, CYLINDER HEAD	1.8
OIL SEAL, 20X32X6	2.4
HEAD COMP., CYLINDER	3.1

Ref. No.	Part No.	Description	Reqd. QTY						Serial No.	Parts catalogue code
			BF 9/9D1	BFP 9/9D1	BF 10D1	BFP 10D1	BF 10B1	BFP 10B1		
1	12166-ZW9-000	STOPPER, ENGINE SIDE	2	2	2	2	2	2		
2	12210-ZW9-000ZA	HEAD COMP., CYLINDER *NHS* ..... DARK GRAY	1	1	1	1	1	1		
3	12251-ZW9-003	GASKET, CYLINDER HEAD	1	1	1	1	1	1		
4	12310-ZW9-000	COVER COMP., HEAD	1	1	1	1	1	1		
5	12312-ZW9-000	PACKING, HEAD COVER	1	1	1	1	1	1		
6	15611-921-000	CAP, OIL (NO GAUGE)	1	1	1	1	1	1		
7	16617-ZW9-000 16617-ZW9-010	HOLDER, CABLE	1	1	1	1	1	1	SC,SG 1001800 LHC,LHD	



Service item	F.R.T.
CAM, THROTTLE (INC. RELATIVE PART)	0.2
.LINKAGE, PIVOT	
.ROD COMP., THROTTLE	
DIAPHRAGM ASSY.	0.3

- ① **Address number**
  - Address No. is provided (in place of the page No.) to help you refer to the part with the part No. or part name.
- ② **Block title** ③ **Block number**
- ④ **Service item/Flat rate time**
- ⑤ **Reference number**
  - Title number marked with the parenthesis or parentheses indicates that it continues from the previous page.
- ⑥ **Part number** ⑦ **Honda color code**
- ⑧ **Description**
- ⑨ **Assemblies**
  - Sections framed with broken lines in the exploded view drawings are available as complete assemblies. (Their individual parts can also be obtained.)
- ⑩ **Color description**
- ⑪ **Note**
  - Notes are shown with the parentheses in the part name column.
- ⑫ **Required quantity**
  - Required QTY shown in the parenthesis or parentheses indicates the optional part.
  - Required QTY marked with "N" Indicates the optional part that should be selected as needed.
  - Required QTY indicates the number of the part used in the block.
- ⑬ **Serial number**
- ⑭ **Type**
  - When the type column is blank, it indicates that the part is applicable to all types.
  - As the type of the actual unit may differ from the "parts catalogue, type" please refer to "Models, types and applicable serial numbers" for confirmation.
- ⑮ **Parts enclosed within a dotted line**
  - Parts enclosed within a dotted line are covered in a different block.
- ⑯ **Hollow arrow**
  - A hollow arrow indicates the block No. for the parts enclosed within a dotted line .
- ⑰ **Solid arrow**
  - A solid arrow indicates the block No. the part in question is connected to.

When the parts were revised

Abbreviations used in the parts catalogue

1



Be sure to check the serial number!!



Ref. No.	Part No.	Description	Reqd. QTY						Serial No.
			BF 9.9D1	BFP 9.9D1	BF 1001	BFP 1001	BF 10B1	BFP 10B1	
1	12166-ZW9-000	STOPPER, ENGINE SIDE	2	2	2	2	2	2	
2	12210-ZW9-000ZA	HEAD COMP., CYLINDER							
		*NH8*.....DARK GRAY	1	1	1	1	1	1	
3	12251-ZW9-003	GASKET, CYLINDER HEAD	1	1	1	1	1	1	
4	12310-ZW9-000	COVER COMP., HEAD	1	1	1	1	1	1	
5	12312-ZW9-000	PACKING, HEAD COVER	1	1	1	1	1	1	
6	15611-921-000	CAP, OIL (NO GAUGE)	1	1	1	1	1	1	
7	16617-ZW9-000	HOLDER, CABLE (###)	1	1	1	1	1	1	
	16617-ZW9-010		1	1	1	1	1	1	

The number has been used from the initial model without revision.

When shown at the left side, it is applicable to the models of No.1001801 and the subsequent numbers.

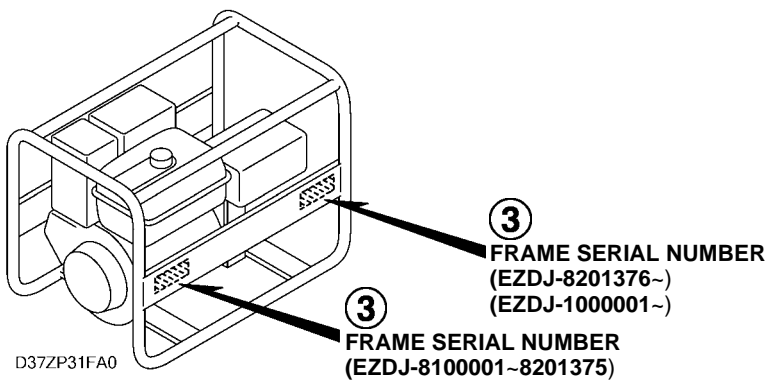
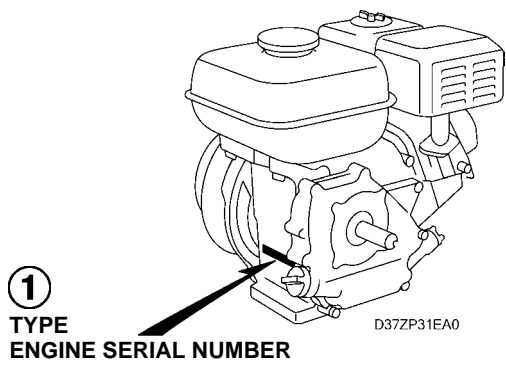
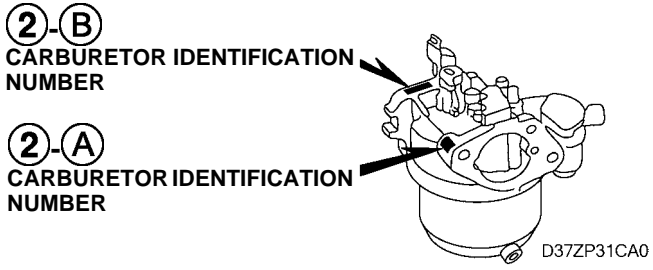
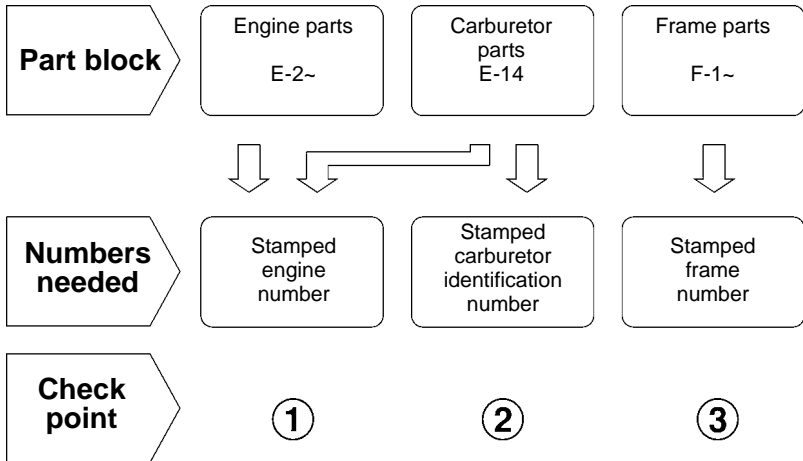
When shown at the right side, it is applicable to the models up to No.1001800.

• The parts listed with "###" at the end of the parts name have limited supply period (parts not for sale).

• The following abbreviations are used in the parts name column.

- |  |                             |
|--|-----------------------------|
| A ..... Ampere                               | FR. ....Front               |
| A.C. .... Alternating current                | IN. ....Inlet               |
| ASSY. .... Assembly                          | L (100L) .Link (100 Links)  |
| AT. .... Automatic transmission              | L. ....Left                 |
| C.D.I. .... Capacitive discharge ignition    | MM .....Millimeter          |
| COMP. ... Complete                           | MT. ....Manual Transmission |
| D.C. .... Direct current                     | P.T.O. ....Power take off   |
| EX. .... Exhaust                             | R. ....Right                |
| G.F.C.I ... Ground fault circuit interruptor | RR. ....Rear                |
| HEX. .... Hexagonal                          | STD. ....Standard           |
| H.S.T. .... Hydrostatic transmission         | T (22T) ...Tooth (22 Teeth) |
|  | V .....Volt                 |
|  | W .....Watt                 |

How to check the part block and serial numbers





### Models, parts catalogue codes and applicable serial numbers

- Models, parts catalogue codes and applicable serial Nos. given in this parts catalogue can be identified as follows.

Model	Type	Parts catalogue type	Engine		Applicable engine serial No.	Applicable frame serial No.	Applicable carburetor identification No.
			Model	Type			
EC3600	BT	BT	GX270T	EY4	GCADT-1000001~	EZDJ-8300001~	BE78B A
	FT	FT					
	GVT	GVT					
	GVWT	GVWT					
	ITT	ITT					
EC3600K1	BT	BT	GX270T2	EY4	GCBHT-1000001~	EZDJ-1000001~	BE21J A
	FT	FT					
	GVT	GVT					
	GVWT	GVWT					
	ITT	ITT					
EC4000K1	B	B	GX270	EY17	GCAB-1000001~1999999	EZDJ-8100001~8199999	BE75B B/C
	BT	BT	GX270T	EY1	GCADT-1000001~	EZDJ-8100001~	BE78B A
	F	F	GX270	EY17	GCAB-1000001~1999999	EZDJ-8100001~8199999	BE75B B/C
	FT	FT	GX270T	EY1	GCADT-1000001~	EZDJ-8100001~	BE78B A
	GV	GV	GX270	EY17	GCAB-1000001~1999999	EZDJ-8100001~8199999	BE75B B/C
	GVT	GVT	GX270T	EY1	GCADT-1000001~	EZDJ-8100001~	BE78B A

Model	Type	Parts catalogue type	Engine		Applicable engine serial No.	Applicable frame serial No.	Applicable carburetor identification No.
			Model	Type			
EC4000K2	BT	BT	GX270T	EY4	GCADT-1000001~	EZDJ-8200001~	BE78B A
	FT	FT					
	GVT	GVT					
	GVWT	GVWT					
	ITT	ITT					

\* Of carburetor identification numbers, only the portions underlined in the example below are used for registration.

BE 78B A KC †  
 (A) (B)



Features of each type

1

- See the following table for the features of each type. (Items in brackets are optional)

Specifications		Model Type	EC3600					EC3600K1					EC4000K1					
			BT	FT	GVT	GVWT	ITT	BT	FT	GVT	GVWT	ITT	B	BT	F	FT	GV	GVT
Voltage	115V		●					●					●	●				
	230V		●	●	●	●	●	●	●	●	●	●	●	●	●	●	●	●
Receptacle	16A-120V(Yellow)		●					●					●	●				
	16A-240V(Blue)		●				●	●			●	●	●	●				
	16A-250V(Black)													●	●	●	●	
	16A-250V(Blue)			●	●	●	●		●	●	●	●						

Specifications		Model Type	EC4000K2				
			BT	FT	GVT	GVWT	ITT
Voltage	115V		●				
	230V		●	●	●	●	●
Receptacle	16A-120V(Yellow)		●				
	16A-240V(Blue)		●				●
	16A-250V(Black)						
	16A-250V(Blue)			●	●	●	●

## Fuel hose, general purpose hoses and vinyl hose

- The standard part fuel hose, general purpose hose and vinyl hose may be substituted by the coiled bulk part.
- When ordering the standard part fuel hose, general purpose hose and vinyl hose use the bulk part number written in the parts catalog in brackets ( ) underneath the part name.
- When exchanging the hose, cut and use at the specified length as mentioned in the part name.  
(For the method of cutting the bulk part, and method of filling out orders etc., please refer to the instructions issued with the bulk part.)

### Bulk part number of fuel hose, general purpose hose and vinyl hose.

Example: 9 5 0 0 1 - 7 5 0 0 1 - 5 0 M

**Bulk part number:**  
Refers to the bulk part.

**Marking code (fuel hose and general purpose hose)**

**Change code (Vinyl hose)**

Indicates number mark or change sequence, however, the code for the bulk part must be strictly 0 (zero).

**Types of code:**

- |             |  |                |  |              |   |
|-------------|--|----------------|--|--------------|---|
| • Fuel hose | 2: Red outside braid<br>(3 mm inside dia. only)        | • General hose | 1: Ash gray<br>2: Ash gray<br>3: Black<br>5: Black | • Vinyl hose | 1: Clear<br>2: Black<br>3: Light red<br>6: Light red<br>7: Pale black |
|             | 5: Black inside braid                                  |                |  |              |   |
|             | 3: Red (3 mm inside dia. only)                         |                |  |              |   |
|             | 4: Ash gray with red stripe<br>(3 mm inside dia. only) |                |  |              |   |
|             | 6: Black   |                |  |              |   |

**Lengths:**

- 001: 1 m (standard)  
003: 3 m  
008: 8 m } Application or specification of some parts is not settled.

**I.D code: (fuel hose and general purpose hose)**

- |            |                    |                    |                             |                             |
|------------|--------------------|--------------------|-----------------------------|-----------------------------|
| 30: 3.0 mm | 50: 5.0 mm         | 70: 7.0 mm         | 11: 11 mm                   | 12: 12 (outside dia. 17) mm |
| 35: 3.5 mm | 55: 5.3 mm, 5.5 mm | 75: 7.3 mm, 7.5 mm | 91: 12 (outside dia. 15) mm | 14: 14 mm                   |
| 45: 4.5 mm | 65: 6.5 mm         | 80: 8.0 mm         | 92: 12 (outside dia. 16) mm | 17: 17 mm                   |

**ID./OD. code: (vinyl hose)**

- |                         |                          |                           |                           |                           |
|-------------------------|--------------------------|---------------------------|---------------------------|---------------------------|
| 01: ID. 2.9, OD. 6.8 mm | 12: ID. 5.0, OD. 7.0 mm  | 21: ID. 8.0, OD. 9.0 mm   | 37: ID. 11.0, OD. 15.0 mm | 50: ID. 16.0, OD. 19.0 mm |
| 03: ID. 3.0, OD. 6.0 mm | 10: ID. 5.0, OD. 8.0 mm  | 23: ID. 8.0, OD. 12.0 mm  | 38: ID. 12.0, OD. 13.0 mm | 55: ID. 17.5, OD. 20.5 mm |
| 05: ID. 3.5, OD. 6.5 mm | 11: ID. 5.0, OD. 9.0 mm  | 25: ID. 9.0, OD. 11.0 mm  | 39: ID. 12.0, OD. 14.0 mm | 60: ID. 22.0, OD. 27.0 mm |
| 07: ID. 4.0, OD. 7.0 mm | 14: ID. 6.0, OD. 9.0 mm  | 27: ID. 9.0, OD. 13.0 mm  | 40: ID. 12.0, OD. 16.0 mm |                           |
| 08: ID. 4.5, OD. 6.5 mm | 17: ID. 7.0, OD. 9.0 mm  | 33: ID. 10.0, OD. 14.0 mm | 43: ID. 13.0, OD. 15.0 mm |                           |
| 09: ID. 4.5, OD. 8.0 mm | 19: ID. 7.0, OD. 11.0 mm | 36: ID. 11.0, OD. 13.0 mm | 45: ID. 14.0, OD. 18.0 mm |                           |

**Hose type:**

- 1: Fuel hose  
3: Vinyl hose  
5: General hose

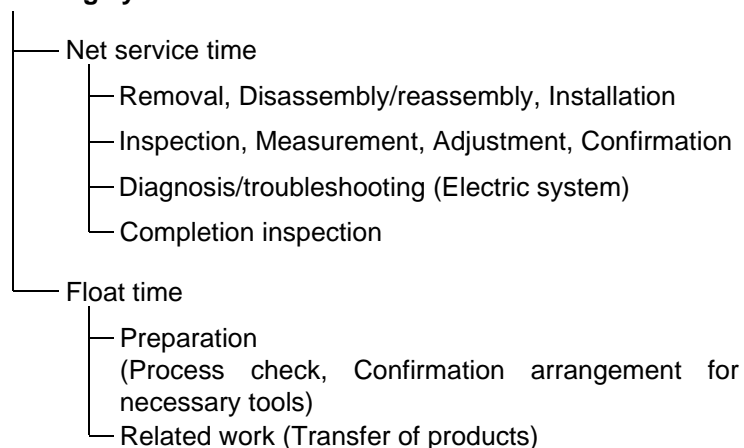
⊙ **CAUTION: It is DANGEROUS to confuse the fuel hose with the general purpose hose or vinyl hose.**

Never use a general purpose hose or vinyl hose in place of a fuel hose or vice versa. Always use the correct bulk part in the parts catalogue, according to the service manual or the instructions issued with the bulk part.

## FLAT RATE SERVICE TIME

Flat rate service time (FRT) means the standard time required to service a product, which is listed in this manual to help the dealers control the actual working process and calculate the service charge by using it as a guide.

### FRT setting system



\* Float time is set by multiplying the net service time by a given coefficient.

### Editorial style

The service items shown in the text are listed with the exchange work time for the repair sales parts as the subject. Other representative service items not using repair parts (removal/installation, adjustment, inspection/measuring, and other work) are listed collectively in the list in the preface, classified according to the work.

### FRT setting standard

- Decimal system (in unit of 0.1) is adopted to set FRT as it is convenient to calculate the wage.  
Example: (0.1) → 6 minutes, (0.2) → 12 minutes  
[Labor cost per hour] x [FRT] = [Wage]
- FRT is set with a hand tool.
- Service items and FRT can be subject to change depending on development of tools and service equipment and improvement in service procedure.

**Work procedure**

- As the work procedure is set with the work time according to the method in the separate Service Manual, refer to this Manual as required.
- Work methods permitting servicing in the shortest time still permitting assurance of safe work and product warranty are used for the setting of service items not listed in the Service Manual.
- Work basically is to be performed by one person, and when two or more people are required, setting is done as the total time for the number of people.
- The set value for the technological level of the workers uses a person with three years of experience in the repair of Honda products as the standard.
- Special tools and service equipment used to set FRT are those specified or recommended in Service Manual.

**Service item whose FRT is not presented**

- Accessories and service parts that are not listed to use in this manual.
  - Locations with little aging deterioration or breakage during normal use.
  - Service work that can be finished by one touch.
  - Service work that is seldom done (i.e. extremely small causes of trouble and service frequency).
  - Products and parts whose location for installation differs according to its status of use and application.
- \* When FRT is not presented, please calculate wages based on appropriate actual work time.

**Operation not included of FRT**

- Oil and coolant water draining, Waiting time for warming up operation and etc..
- Additional operation that involves removal/installation of standard exterior equipment.
- Indirect time spent for service by visiting the customer, trade-in, and delivery.
- Indirect time required for ordering and delivery of parts.
- Cost for grease, adhesive agent, etc. used for service work.

1

**Explanation of FRT by using an example**  
**(The example may differ from the actual presented items)**

Ref. No.	L.O.N.	(Relative ref. Number)	F.R.T.
①	1111L1	④ VALVE, INTAKE .....4.1	②
②		⑧ • NOTE: OHV type	⑦
③	1111L1A	⑤ • Includes: Engine removal and installation One head (intake all) add .....1.4	

- ① Reference No. of the illustration of part that shows location of the replacement work.
- ② FRT is an abbreviation of Flat Rate Time indicating the standard service time required for the replacement.
- ③ LON is an abbreviation of Labor Operation Number, and it is a classification of the service items by the work unit code.

The same operation code is used regardless of the models.

Standard operation is indicated with 6 digits code, and additional operation is indicated with 7 digits code.

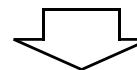
- ④ Indicating the intake valve replacement and FRT4.1.
- ⑤ Indicating FRT1.4 that will be added when additional operation (whole intake side of one cylinder head) is done in association with intake valve replacement.

- ⑥ Indicating work condition or application condition of the service item.
- ⑦ Indicating work contents that are included in the service item.
- ⑧ Indicating a reference No. whose operation and time are the same as FRT4.1 for the intake valve.

(The application range is limited to the service items without an LON setting within a same block.)

**How to refer to the service item by using the sample**  
(intake valve replacement)

Open to the page of the block where the intake valve's spare part illustration is shown.



Look for the intake valve illustration, and refer to the service item and FRT that agree with the reference No.

Indication mark for the listing of service items that continues to the following page

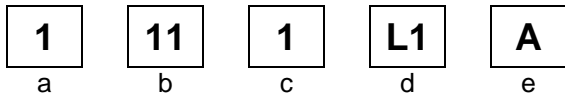
Ref. No.	L.O.N.	(Relative ref. Number) Description	F.R.T.
2	1111L1	VALVE, INTAKE .....	4.1
	.	.	.
	.	.	.

+  
Mark indicated at the last line.

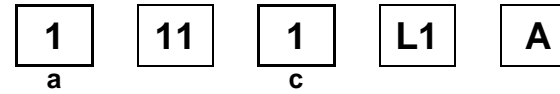
Indication of the block with no setting of FRT

Ref. No.	L.O.N.	(Relative ref. Number) Description	F.R.T.
NO INFORMATION .....			

• LON code system



- a) Category code..... Engine
- b) Location/function code..... Engine upper
- c) Operation code..... Replace
- d) Operation sequence number (Unit code can be shown with alphabet)  
..... Intake valve  
(No regular rule of code)
- e) Additional code ..... One head (intake all)  
(No regular rule of code)



a) Category codes and classification

Code	Category
1	Engine
2	Power drive
3	Fuel & Exhaust
4	Frame & Body
5	Steering
6	Electrical
7	Axle & Brake
8	Control system
9	-
0	Attachments

c) Operation codes and classification

Code	Operation category
1	Replace, Removal/Installation, Change
2	Overhaul
3	Adjust, Rotation
4	(Paint-related work: Top-coat)
5	Test, Inspect/diagnose, Measurement
6	(Overhaul-related work: Rebore)
7	(Overhaul-related work: Reseal)
8	(Resurface)
9	(Paint-related work: Refinish)
0	Repair, Cleaning, Air bleeding



Major service items without using spare parts

- (1) Removal/Installation, (2) Adjustment,  
(3) Inspection/Measurement, (4) Overhaul, (5) Other work

E: Engine, T: Transmission, D: Drive system,  
B: Body and related parts

### (1) Removal/Installation

Set with the parts configuration in the status of being removed from the product.

	LON	DESCRIPTION	FRT
E	1001A0	<b>ENGINE AND GENERATOR-REMOVAL/INSTALLATION</b>	0.4
	1001A2	<b>ENGINE-REMOVAL/INSTALLATION</b>	1.1
	1111L3	<b>CYLINDER HEAD ASSEMBLY-REMOVAL/INSTALLATION</b>	1.2
B	3101H1	<b>FUEL TANK-REMOVAL/INSTALLATION</b>	0.3
	6221B3	<b>CONTROL PANEL ASSEMBLY-REMOVAL/INSTALLATION</b>	0.2

### (2) Adjustment

	LON	DESCRIPTION	FRT
E	1113A1	<b>VALVE CLEARANCE-ADJUSTMENT</b> NOTE: For 1 product	0.4
	1163A0	<b>CONTROL, THROTTLE/GOVERNOR-ADJUSTMENT</b>	0.2
	3113A2	<b>CARBURETOR IDLE-ADJUSTMENT</b>	0.2

### (3) Inspection, Measurement, Cleaning

	LON	DESCRIPTION	FRT
E	1105A0	<b>ENGINE OIL-INSPECTION</b>	0.1
	3115A2	<b>CARBURETOR FLOAT LEVEL-MEASUREMENT</b>	0.2
	3120A0	<b>AIR CLEANER-CLEANING</b> INCLUDES: Air cleaner-inspection	0.2

E	3130A0	<b>SPARK ARRESTER-CLEANING</b> INCLUDES: Spark arrester-inspection	0.2
	6140A0	<b>SPARK PLUG-ADJUSTMENT/CLEANING</b> INCLUDES: Spark plug check NOTE: For 1 product	0.1

### (4) Overhaul

Work condition: The required Measurements, inspections, adjustments, and cleaning/washing of each part are performed, including the main body removal/installation work and the replacement of defective parts.

	LON	DESCRIPTION	FRT
E	3112A0	<b>CARBURETOR-OVERHAUL</b> INCLUDES: All necessary adjustment	0.5

### (5) Other work

	LON	DESCRIPTION	FRT
E	1101E1	<b>ENGINE OIL-CHANGE</b> INCLUDES: Engine oil-inspection	0.1

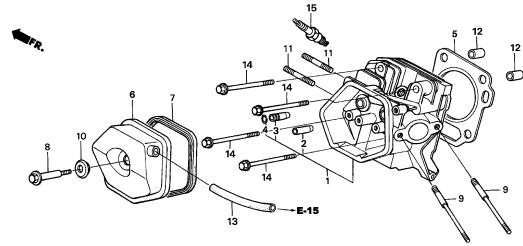
# ENGINE GROUP

**B15**

**E-2**

CYLINDER HEAD

**D 1**

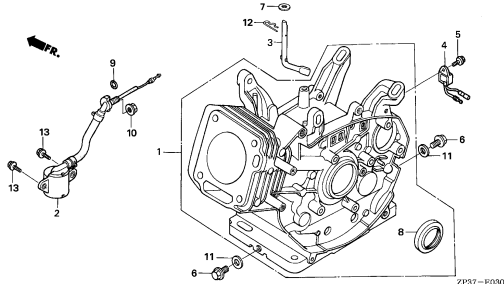


ZP37-E0200

**E-3**

CYLINDER BARREL

**D 2**

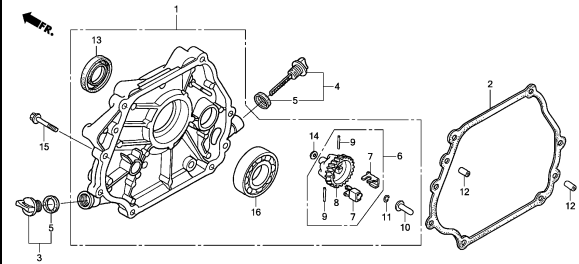


ZP37-E0300

**E-6**

CRANKCASE COVER

**D 3**

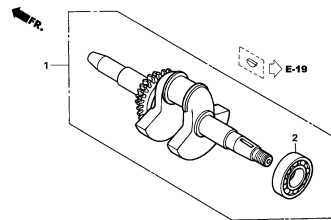


ZP37E0600A

**E-7**

CRANKSHAFT

**D 4**

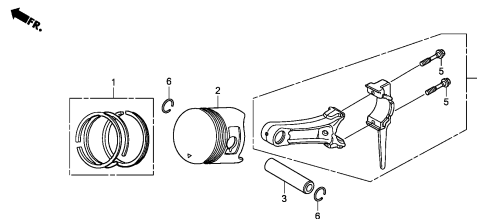


ZP37-E0700

**E-8**

PISTON

**D 5**

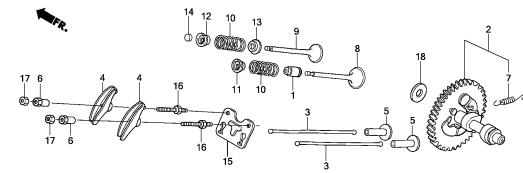


ZP37E0800A

**E-9**

CAMSHAFT

**D 8**

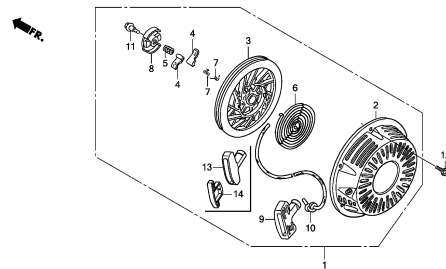


ZP37E0900A

**E-11**

RECOIL STARTER

**D10**

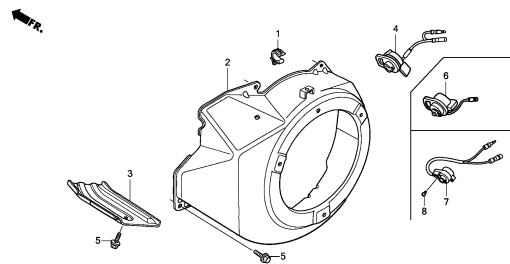


ZP37E11000

**E-12**

FAN COVER

**D11**

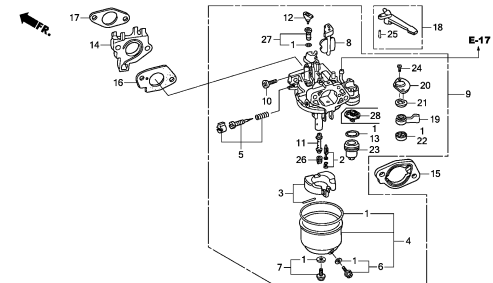


ZP37E12000

**E-14**

CARBURETOR

**D12**



ZP37E14000

**2**

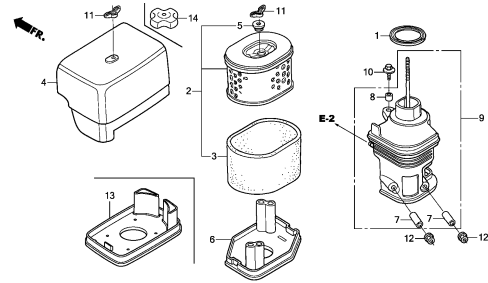
# ENGINE GROUP

**B16**

**E-15**

**AIR CLEANER**

**D14**

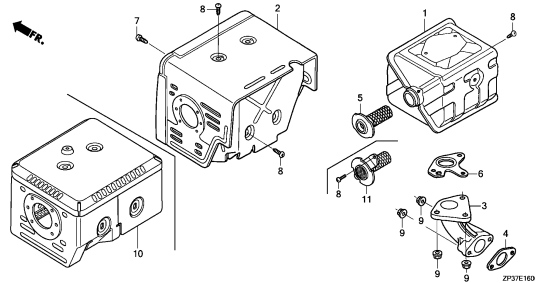


ZP37E1800A

**E-16**

**MUFFLER**

**D15**

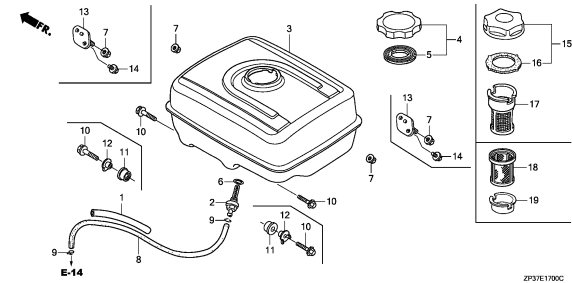


ZP37E1600A

**E-17**

**FUEL TANK**

**D16**

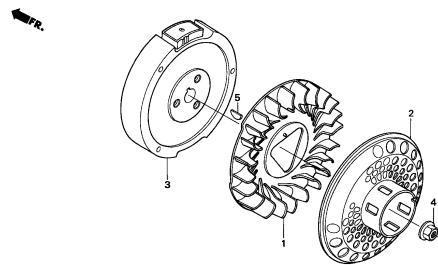


ZP37E1700C

**E-19**

**FLYWHEEL**

**E 2**

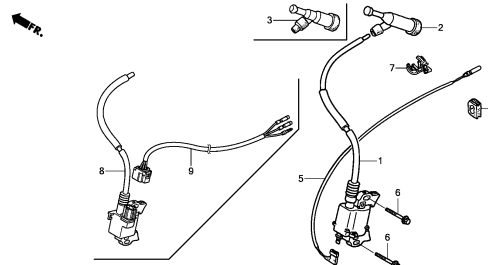


ZP37-E1900

**E-20**

**IGNITION COIL**

**E 3**

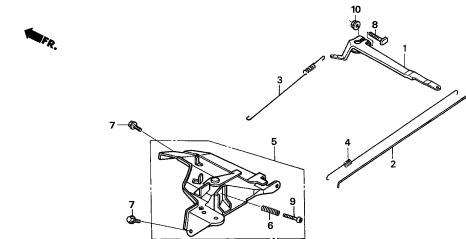


ZP37E2000A

**E-22**

**CONTROL**

**E 4**

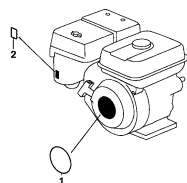


ZP37-E2200

**E-28**

**LABEL**

**E 5**



ZP37-E2800

**2**

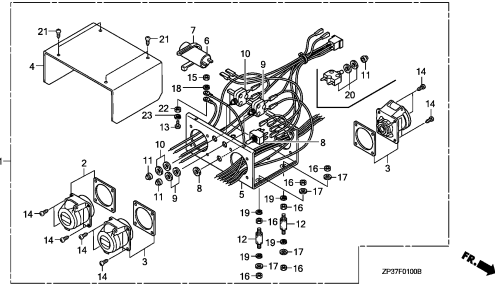
# FRAME GROUP

C 1

F-1

COVER/RECEPTACLE UNIT(1)

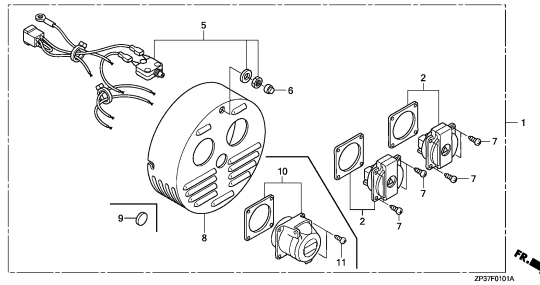
F 1



F-1-1

COVER/RECEPTACLE UNIT(2)

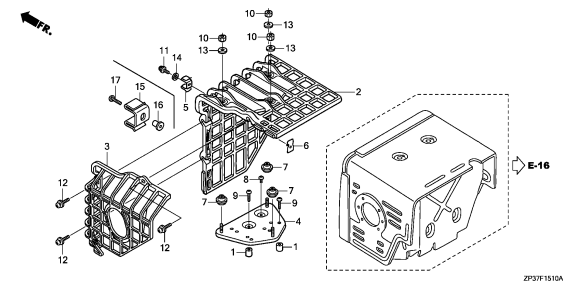
F 3



F-15-10

MUFFLER COVER

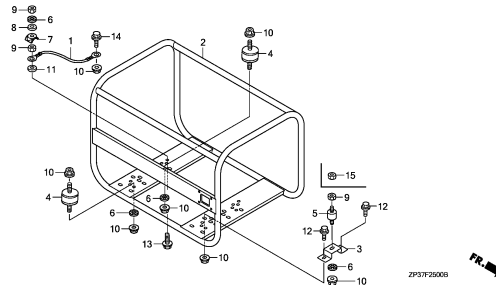
F 4



F-25

FRAME(EC4000K1/K2)

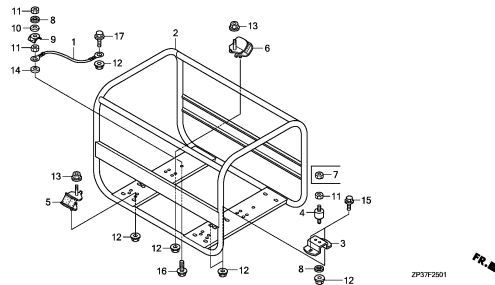
F 5



F-25-1

FRAME(EC3600/K1)

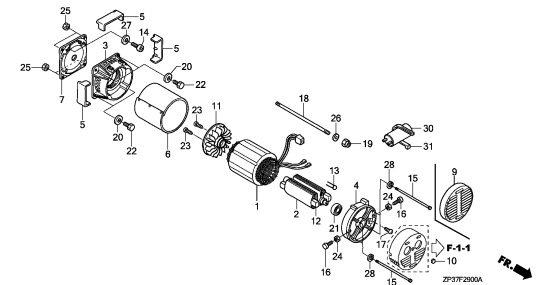
F 6



F-29

ROTOR/STATOR

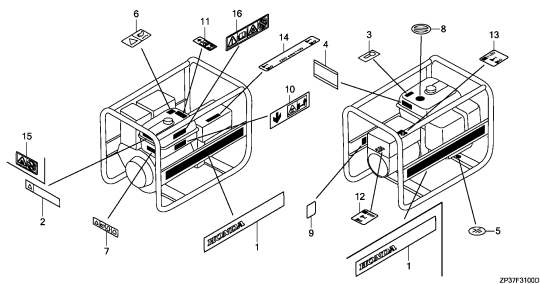
F 7



F-31

LABEL

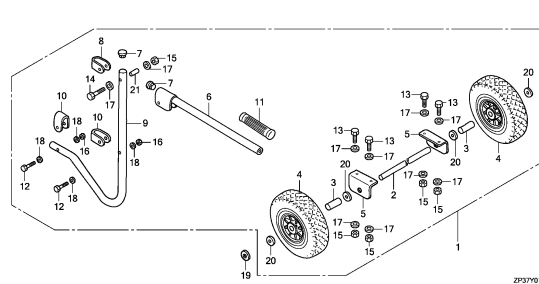
F 9



FOP-1

WHEEL KIT

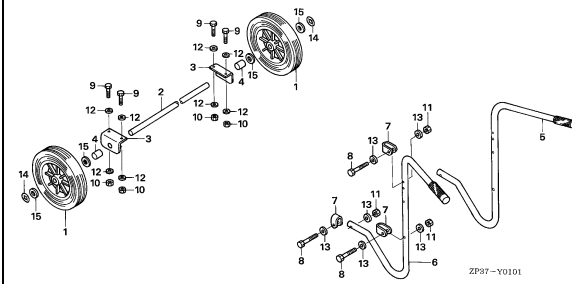
F11



FOP-1-1

HANDLE/WHEEL

F12



3

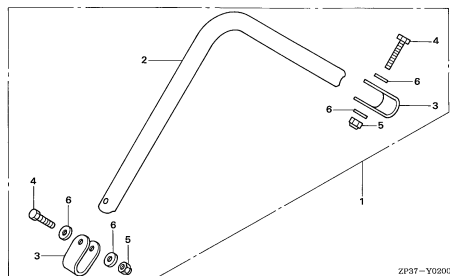
# FRAME GROUP

C 2

FOP-2

F13

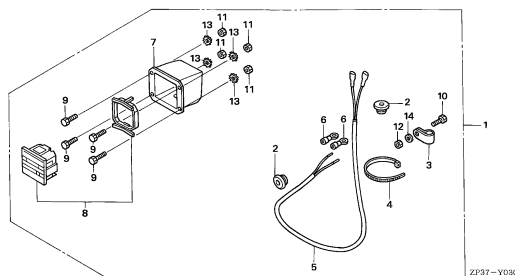
HANGER KIT

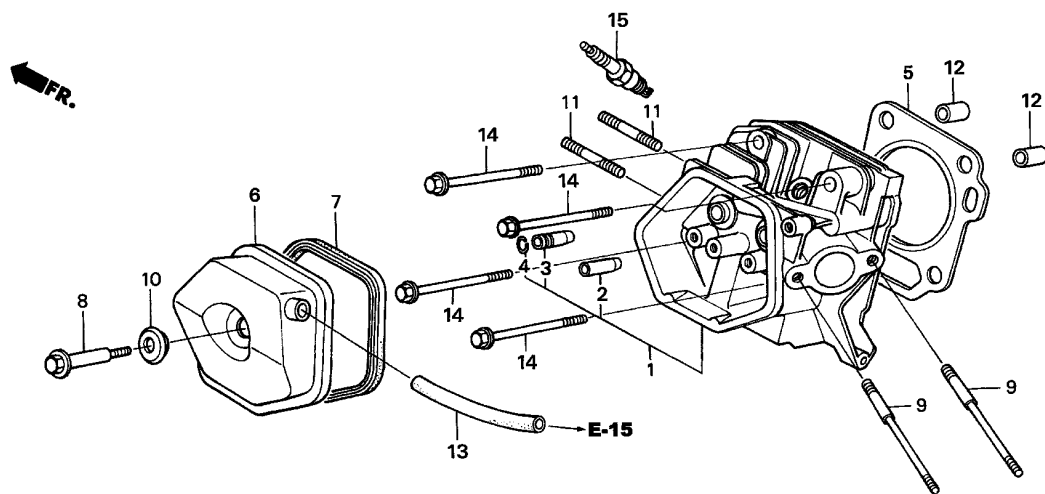


FOP-3

F14

HOUR METER KIT



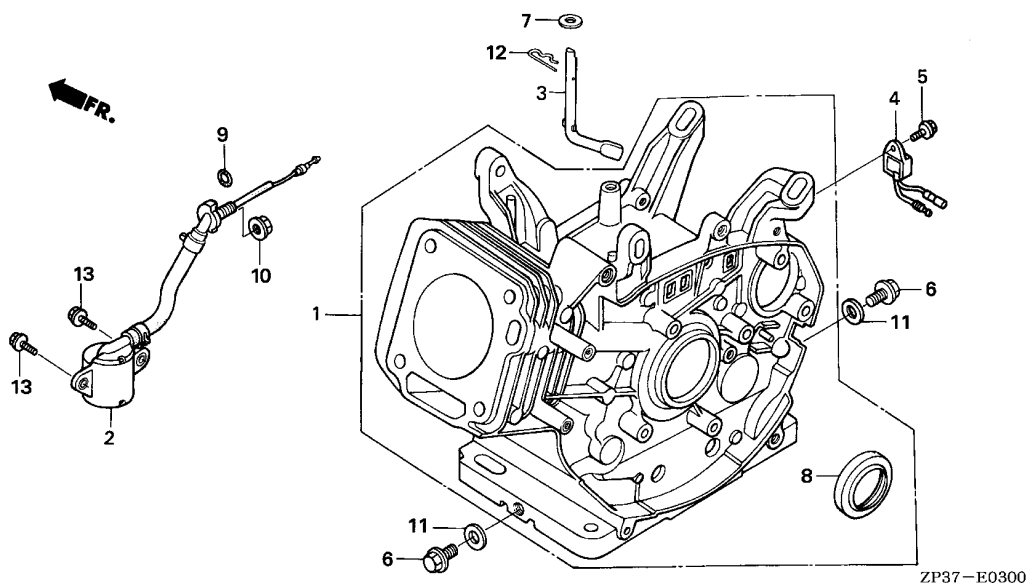


ZP37-E0200

Ref. No.	L.O.N.	(Relative ref. Number) Description	F.R.T.
1	1111N3	HEAD, CYLINDER ..... .INCLUDES: Valve clearance adjustment and reface	1.7
2	1111E9	GUIDE, INTAKE VALVE ..... .INCLUDES: Valve clearance adjustment	1.5
	1111E9E	.Replace intake and exhaust all add .....	0.2
3	1111E8	GUIDE, EXHAUST VALVE ..... .INCLUDES: Valve clearance adjustment	1.5
	1111E8E	.Replace intake and exhaust all add .....	0.2
5	1111N4	GASKET, CYLINDER HEAD .....	1.2
6	1111D5	COVER, CYLINDER HEAD AND/OR PACKING, HEAD COVER .....	0.1
13	1111K5	TUBE, BREATHER .....	0.1
15	6141C1	PLUG, SPARK .....	0.1
		.INCLUDES: Spark plug check	

Ref. No.	Part No.	Description	Reqd. QTY				Serial No.	Parts catalogue code
			EC 3600	EC 3600 K1	EC 4000 K1	EC 4000 K2		
1	12200-Z1D-405	HEAD COMP., CYLINDER .....	1	1	1	1	----- BT,FT,GVT,GVWT,ITT	
	12200-ZH9-405	.....	-	-	-	-	----- B,F,GV	
2	12204-ZE2-306	GUIDE, IN. VALVE(O.S.) .....	1	1	1	1		
3	12205-ZE2-305	GUIDE, EX. VALVE(O.S.) .....	1	1	1	1		
4	12216-ZE2-300	CLIP, VALVE GUIDE .....	1	1	1	1		
5	12251-Z1D-801	GASKET, CYLINDER HEAD (THAI LEAKLESS)	1	-	1	1	1060425 ----- BT,FT,GVT,GVWT,ITT	
	12251-Z5K-003	GASKET, CYLINDER HEAD .....	-	1	-	-		
	12251-ZH9-000	.....	-	-	1	1	----- 1060424 BT,FT,GVT,GVWT,ITT	
			-	-	-	-	----- B,F,GV	
6	12310-ZE2-020	COVER COMP., HEAD .....	1	1	1	1		
7	12391-ZE2-020	PACKING, HEAD COVER .....	1	1	1	1		
8	90014-ZE2-000	BOLT, HEAD COVER .....	1	-	1	1		
	90014-Z5T-000	.....	-	1	-	-		
9	90042-ZE2-000	BOLT, STUD, 8X123 .....	2	2	2	2		
10	90441-ZE2-010	WASHER COMP., HEAD COVER .....	1	1	1	1		
11	92900-08032-0E	BOLT, STUD, 8X32 .....	2	2	2	2		
12	94301-12200	DOWEL PIN, 12X20 .....	2	2	2	2		
13	95005-11100-30	TUBE, 11X100(95005-11001-30M)	1	-	1	1		
	12357-Z5T-020	TUBE, BREATHER .....	-	1	-	-		
14	95701-10080-00	BOLT, FLANGE, 10X80 .....	4	4	4	4	----- BT,FT,GVT,GVWT,ITT	
	95725-10080-00	.....	-	-	4	-	----- B,F,GV	
15	98079-55876	PLUG, SPARK (BPR5ES) (NGK) .....	(1)	(1)	(1)	(1)	----- BT,FT,GVT,GVWT,ITT	
	98079-56876	PLUG, SPARK (BPR6ES) (NGK) .....	1	1	1	1	----- BT,FT,GVT,GVWT,ITT	
	98079-55846	PLUG, SPARK (BPR5ES) (NGK) .....	-	-	(1)	-	----- B,F,GV	
	98079-55855	PLUG, SPARK (W16EPR-U) (DENSO) .....	-	-	(1)	-	----- B,F,GV	
	98079-56846	PLUG, SPARK (BPR6ES) (NGK) .....	-	-	1	-	----- B,F,GV	
	98079-56855	PLUG, SPARK (W20EPR-U) (DENSO) .....	-	-	1	-	----- B,F,GV	





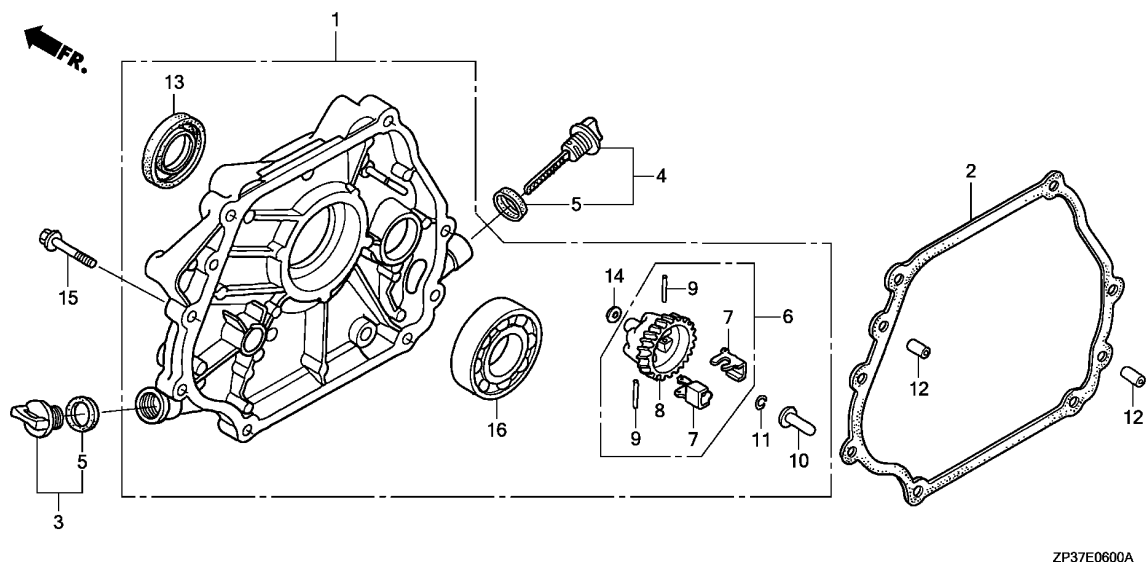
Ref. No.	L.O.N.	(Relative ref. Number) Description	F.R.T.
1	1101A0	BARREL, CYLINDER ..... .INCLUDES: Engine removal and installation	3.0
2	6151E8	SWITCH, OIL LEVEL ..... (9)	1.5
3	1161B4	SHAFT, GOVERNOR ARM ..... (9)	1.5
4	6151K2	ALERT UNIT, GENERATOR OIL ....	0.2
8	1101E5	OIL SEAL, CRANKSHAFT :REAR ... .INCLUDES: Engine removal and installation	2.4

Ref. No.	Part No.	Description	Reqd. QTY				Serial No.	Parts catalogue code
			EC 3600	EC 3600 K1	EC 4000	EC 4000 K2		
1	12000-Z1D-406	BARREL ASSY., CYLINDER(ALERT)	1	1	1	1	----- BT,FT,GVT,GVWT,ITT	
	12000-ZH9-406	.....	-	-	1	-	----- B,F,GV	
2	35480-ZF6-003	SWITCH ASSY., OIL LEVEL .....	1	-	1	1	1150255 ----- BT,FT,GVT,GVWT,ITT	
	15510-ZE2-043	.....	-	-	1	-	----- 1150254 BT,FT,GVT,GVWT,ITT	
		.....	-	-	1	-	----- B,F,GV	
3	16541-ZE2-010	SHAFT, GOVERNOR ARM .....	1	1	1	1	-----	
4	34150-ZH7-003	ALERT UNIT, OIL .....	1	-	1	1	1072283 ----- BT,FT,GVT,GVWT,ITT	
	34150-ZH7-013	.....	1	-	1	1	1072284 ----- BT,FT,GVT,GVWT,ITT	
	34150-ZH7-003	.....	-	-	1	-	----- B,F,GV	
5	90013-883-000	BOLT, FLANGE, 6X12(CT200) ...	1	-	1	1	-----	
6	90131-883-000	BOLT, DRAIN PLUG, 12X15 .....	2	2	2	2	-----	
7	90446-KE1-000	WASHER, 8.2X17X0.8 .....	1	1	1	1	-----	
8	91201-Z1D-003	OIL SEAL, 30X46X8 .....	1	1	1	1	----- BT,FT,GVT,GVWT,ITT	
	91201-890-003	.....	-	-	1	-	----- B,F,GV	
9	91353-671-004	O-RING, 14MM(NOK) .....	1	1	1	1	-----	
10	94050-10000	NUT, FLANGE, 10MM .....	1	1	1	1	-----	
11	94109-12000	WASHER, DRAIN PLUG, 12MM ....	2	2	2	2	-----	
12	94251-10000	PIN, LOCK, 10MM .....	1	1	1	1	-----	
13	95701-06012-00	BOLT, FLANGE, 6X12 .....	2	2	2	2	-----	

E-6

CRANKCASE COVER

D 3



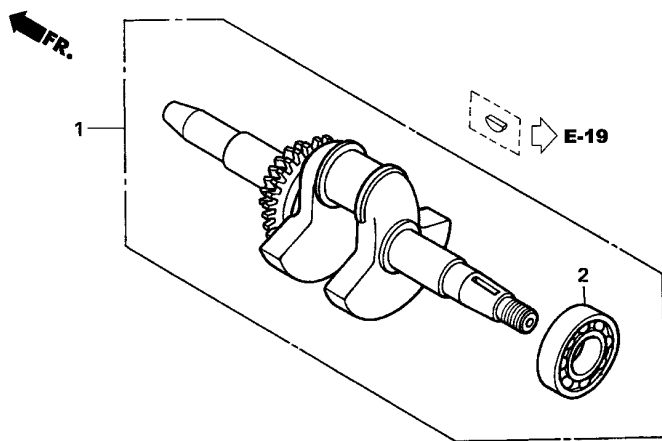
ZP37E0600A

Ref. No.	L.O.N.	(Relative ref. Number) Description	F.R.T.
1	1101F1	COVER, CRANKCASE .....	1.2
2	1101E9	PACKING, CRANKCASE COVER .....	1.2
6	1161C4	GOVERNOR ASSEMBLY .....	1.3
8		(?)	
	1161A7	HOLDER, GOVERNOR WEIGHT .....	1.3
10	1161B6	SLIDER, GOVERNOR .....	1.3
13	1101E4	OIL SEAL, CRANKSHAFT :FRONT ..	1.3
16	1101A4	BEARING, CRANKSHAFT :FRONT ...	1.4

Ref. No.	Part No.	Description	Reqd. QTY				Serial No.	Parts catalogue code
			EC 3600	EC 3600 K1	EC 4000 K1	EC 4000 K2		
1	11300-Z1D-600	COVER ASSY., CRANKCASE .....	1	1	1	1	----- BT,FT,GVT,GVWT,ITT	
	11300-ZE2-602	.....	-	-	1	1	----- B,F,GV	
2	11381-ZE2-801	PACKING, CASE COVER .....	1	-	1	1		
	11381-Z5K-000	.....	-	1	-	-		
3	15600-Z0T-820	CAP ASSY., OIL FILLER .....	1	1	1	1	----- BT,FT,GVT,GVWT,ITT	
	15600-ZG4-003	.....	-	-	1	-	----- B,F,GV	
4	15600-Z1C-000	CAP ASSY., OIL FILLER .....	1	1	1	1	----- BT,FT,GVT,GVWT,ITT	
	15600-735-003	.....	-	-	1	-	----- B,F,GV	
5	15625-Z0T-800	PACKING, OIL FILLER CAP .....	2	2	2	2	----- BT,FT,GVT,GVWT,ITT	
	15625-ZE1-003	.....	-	-	2	-	----- B,F,GV	
6	16510-ZE2-000	GOVERNOR ASSY. ....	1	1	1	1		
7	16511-ZE2-000	WEIGHT, GOVERNOR .....	2	2	2	2		
8	16512-ZE2-000	HOLDER, GOVERNOR WEIGHT .....	1	1	1	1		
9	16513-ZE2-000	PIN, GOVERNOR WEIGHT .....	2	2	2	2		
10	16531-Z0A-000	SLIDER, GOVERNOR .....	1	1	1	1		
11	90602-ZE1-000	CLIP, GOVERNOR HOLDER .....	1	1	1	1		
12	90701-HC4-000	DOWEL PIN, 8X12 .....	2	2	2	2		
13	91201-Z1D-003	OIL SEAL, 30X46X8 .....	1	1	1	1	----- BT,FT,GVT,GVWT,ITT	
	91201-890-003	.....	-	-	1	-	----- B,F,GV	
14	94101-06800	WASHER, PLAIN, 6MM .....	1	1	1	1		
15	95701-08035-00	BOLT, FLANGE, 8X35 .....	7	7	7	7		
16	96100-62060-00	BEARING, RADIAL BALL, 6206 ..	1	1	1	1		

2

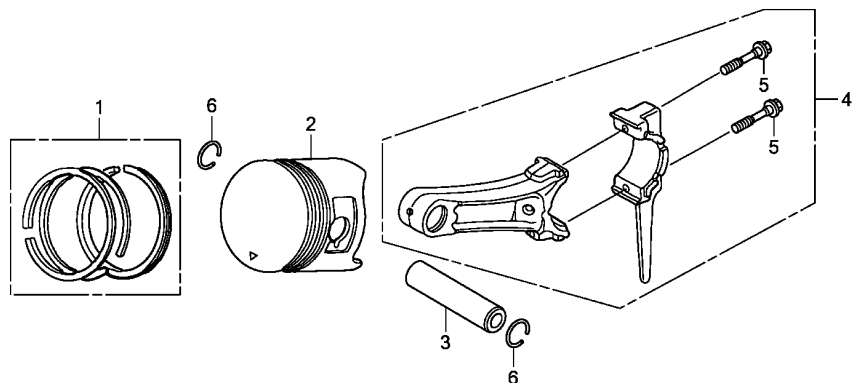




ZP37-E0700

Ref. No.	L.O.N.	(Relative ref. Number) Description	F.R.T.
1	1101F0	CRANKSHAFT ..... .INCLUDES: Engine removal and installation	2.3
2	1101A6	BEARING, CRANKSHAFT :REAR .... .INCLUDES: Engine removal and installation	2.5

Ref. No.	Part No.	Description	Reqd. QTY				Serial No.	Parts catalogue code
			EC 3600	EC 3600 K1	EC 4000 K1	EC 4000 K2		
1	13310-ZK9-671	CRANKSHAFT COMP. ....	1	1	1	1	----- BT,FT,GVT,GVWT,ITT	
	13310-ZK9-670	.....	-	-	1	-	----- B,F,GV	
2	91001-ZH9-003	BEARING, RADIAL BALL(6206 SH)	1	1	1	1		

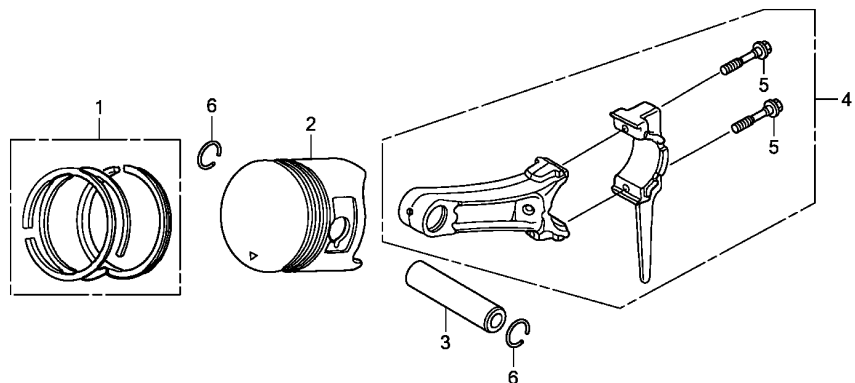


ZP37E0800A

Ref. No.	L.O.N.	(Relative ref. Number) Description	F.R.T.
2		(1,3,4)	
1111R1		PISTON AND/OR RING SET AND/OR BEARING AND/OR ROD ..... .INCLUDES: Engine removal and installation .INCLUDES: Inspection/Measurement/Cleaning	2.4

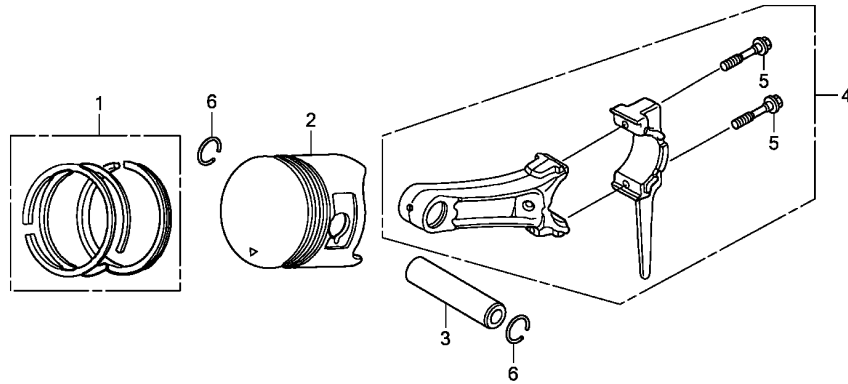
Ref. No.	Part No.	Description	Reqd. QTY				Serial No.	Parts catalogue code
			EC 3600	EC 3600 K1	EC 4000 K1	EC 4000 K2		
1	13010-Z1D-801	RING SET, PISTON(STD.) (RIKEN)	1	-	1	1	-----	1124482 BT,FT,GVT,GVWT,ITT
	13011-Z1D-801	RING SET, PISTON(0.25) (RIKEN)	(1)	-	(1)	(1)	-----	1124482 BT,FT,GVT,GVWT,ITT
	13012-Z1D-801	RING SET, PISTON(0.50) (RIKEN)	(1)	-	(1)	(1)	-----	1124482 BT,FT,GVT,GVWT,ITT
	13013-Z1D-801	RING SET, PISTON(0.75) (RIKEN)	(1)	-	(1)	(1)	-----	1124482 BT,FT,GVT,GVWT,ITT
	13010-Z5H-004	RING SET, PISTON(STD.) (TEIKOKU)	1	-	1	1	-----	1124483 BT,FT,GVT,GVWT,ITT
	13010-Z5K-003	RING SET, PISTON(STD.) (RIKEN)	1	-	1	1	-----	1124483 BT,FT,GVT,GVWT,ITT
	13011-Z5H-004	RING SET, PISTON(0.25) (TEIKOKU)	(1)	-	(1)	(1)	-----	1124483 BT,FT,GVT,GVWT,ITT
	13011-Z5K-003	RING SET, PISTON(0.25) (RIKEN)	(1)	-	(1)	(1)	-----	1124483 BT,FT,GVT,GVWT,ITT
	13012-Z5H-004	RING SET, PISTON(0.50) (TEIKOKU)	(1)	-	(1)	(1)	-----	1124483 BT,FT,GVT,GVWT,ITT
	13012-Z5K-003	RING SET, PISTON(0.50) (RIKEN)	(1)	-	(1)	(1)	-----	1124483 BT,FT,GVT,GVWT,ITT
	13013-Z5H-004	RING SET, PISTON(0.75) (TEIKOKU)	(1)	-	(1)	(1)	-----	1124483 BT,FT,GVT,GVWT,ITT
	13013-Z5K-003	RING SET, PISTON(0.75) (RIKEN)	(1)	-	(1)	(1)	-----	1124483 BT,FT,GVT,GVWT,ITT
	13010-Z5H-004	RING SET, PISTON(STD.) (TEIKOKU)	-	1	-	-		
	13010-Z5K-003	RING SET, PISTON(STD.) (RIKEN)	-	1	-	-		
	13011-Z5H-004	RING SET, PISTON(0.25) (TEIKOKU)	-	(1)	-	-		
	13011-Z5K-003	RING SET, PISTON(0.25) (RIKEN)	-	(1)	-	-		
	13012-Z5H-004	RING SET, PISTON(0.50) (TEIKOKU)	-	(1)	-	-		
	13012-Z5K-003	RING SET, PISTON(0.50) (RIKEN)	-	(1)	-	-		
	13013-Z5H-004	RING SET, PISTON(0.75) (TEIKOKU)	-	(1)	-	-		
	13013-Z5K-003	RING SET, PISTON(0.75) (RIKEN)	-	(1)	-	-		
	13010-ZE8-601	RING SET, PISTON(STD.) (NIPPON)	-	-	1	-	-----	----- B,F,GV





ZP37E0800A

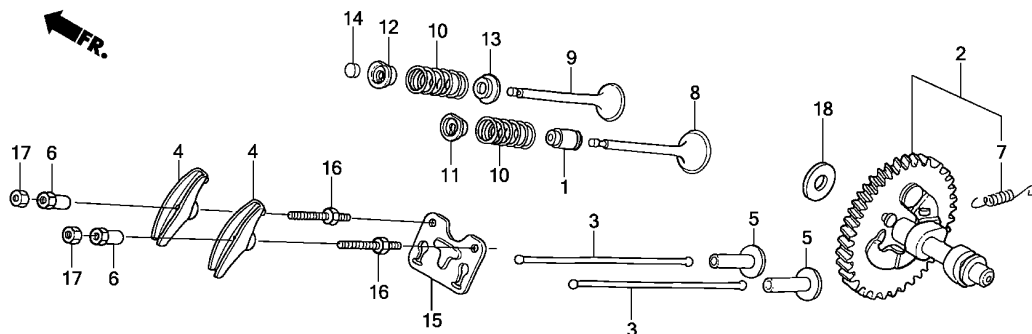
Ref. No.	Part No.	Description	Reqd. QTY				Serial No.	Parts catalogue code
			EC 3600	EC 3600 K1	EC 4000 K1	EC 4000 K2		
(1)	13010-ZE8-602	RING SET, PISTON(STD.) (TEIKOKU)	-	-	1	-	----- B, F, GV	
	13011-ZE8-601	RING SET, PISTON(O.25) (NIPPON)	-	-	(1)	-	----- B, F, GV	
	13011-ZE8-602	RING SET, PISTON(O.25) (TEIKOKU)	-	-	(1)	-	----- B, F, GV	
	13012-ZE8-601	RING SET, PISTON(O.50) (NIPPON)	-	-	(1)	-	----- B, F, GV	
	13012-ZE8-602	RING SET, PISTON(O.50) (TEIKOKU)	-	-	(1)	-	----- B, F, GV	
	13013-ZE8-601	RING SET, PISTON(O.75) (NIPPON)	-	-	(1)	-	----- B, F, GV	
	13013-ZE8-602	RING SET, PISTON(O.75) (TEIKOKU)	-	-	(1)	-	----- B, F, GV	
2	13101-ZH9-000	PISTON(STD.)	1	-	1	1	1124482 BT, FT, GVT, GVWT, ITT	
	13102-ZH9-000	PISTON(O.25)	(1)	-	(1)	(1)	1124482 BT, FT, GVT, GVWT, ITT	
	13103-ZH9-000	PISTON(O.50)	(1)	-	(1)	(1)	1124482 BT, FT, GVT, GVWT, ITT	
	13104-ZH9-000	PISTON(O.75)	(1)	-	(1)	(1)	1124482 BT, FT, GVT, GVWT, ITT	
	13101-ZH9-010	PISTON(STD.)	1	-	1	1	1124483 BT, FT, GVT, GVWT, ITT	
	13102-ZH9-010	PISTON(O.25)	(1)	-	(1)	(1)	1124483 BT, FT, GVT, GVWT, ITT	
	13103-ZH9-010	PISTON(O.50)	(1)	-	(1)	(1)	1124483 BT, FT, GVT, GVWT, ITT	
	13104-ZH9-010	PISTON(O.75)	(1)	-	(1)	(1)	1124483 BT, FT, GVT, GVWT, ITT	
	13101-Z5K-000	PISTON(STD.)	-	1	-	-	----- B, F, GV	
	13102-ZH9-010	PISTON(O.25)	-	(1)	-	-	----- B, F, GV	
	13103-ZH9-010	PISTON(O.50)	-	(1)	-	-	----- B, F, GV	
	13104-ZH9-010	PISTON(O.75)	-	(1)	-	-	----- B, F, GV	
	13101-ZH9-000	PISTON(STD.)	-	-	1	-	----- B, F, GV	
	13102-ZH9-000	PISTON(O.25)	-	-	(1)	-	----- B, F, GV	
	13103-ZH9-000	PISTON(O.50)	-	-	(1)	-	----- B, F, GV	
	13104-ZH9-000	PISTON(O.75)	-	-	(1)	-	----- B, F, GV	
3	13111-ZE2-000	PIN, PISTON	1	-	1	1		
	13111-Z5K-000	.....	-	1	-	-		



ZP37E0800A

Ref. No.	Part No.	Description	Reqd. QTY				Serial No.	Parts catalogue code
			EC 3600	EC 3600 K1	EC 4000 K1	EC 4000 K2		
4	13200-Z1D-000	ROD ASSY., CONNECTING(STD.) -	1	1	1	1	----- BT,FT,GVT,GVWT,ITT	
	13200-Z1D-305	ROD ASSY., CONNECTING (0.25 UNDER SIZE)	(1)	(1)	(1)	(1)	----- BT,FT,GVT,GVWT,ITT	
	13200-ZE2-010	ROD ASSY., CONNECTING(STD.) -	-	-	1	-	----- B,F,GV	
	13200-ZE2-305	ROD ASSY., CONNECTING (0.25 UNDER SIZE)	-	-	(1)	-	----- B,F,GV	
5	90001-ZE8-000	BOLT, CONNECTING ROD .....	2	2	2	2		
6	90551-ZE1-000	CLIP, PISTON PIN, 18MM .....	2	2	2	2		

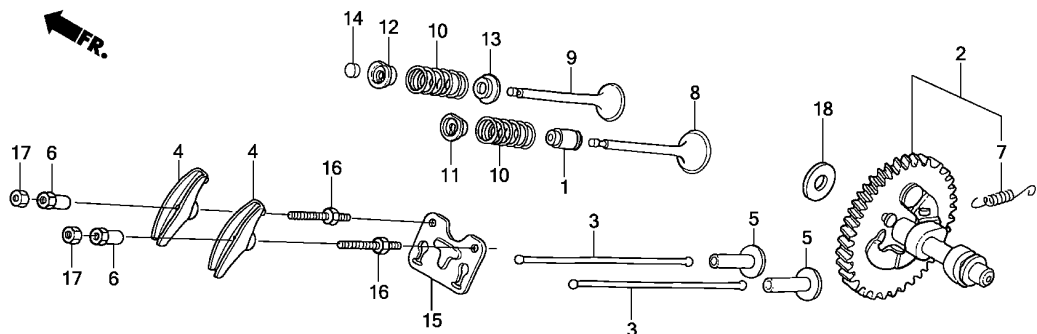




ZP37E0900A

Ref. No.	L.O.N.	(Relative ref. Number) Description	F.R.T.
1	1111K2	SEAL, INTAKE VALVE STEM ..... .INCLUDES: Valve clearance adjustment	1.2
2	1111C2	CAMSHAFT .....	2.1
3	1111L6	ROD, PUSH :INTAKE .....	0.2
	1111L6A	.Replace exhaust push rod add	0.1
	1111L7	ROD, PUSH :EXHAUST .....	0.2
	1111L7A	.Replace intake push rod add	0.1
4	1111A2	ARM, ROCKER :INTAKE .....	0.2
	1111A2A	.Replace exhaust rocker arm add .....	0.1
	1111A1	ARM, ROCKER :EXHAUST .....	0.2
	1111A1A	.Replace intake rocker arm add	0.1
5	1111L9	LIFTER, VALVE :INTAKE .....	2.1
+ .NOTE: Same time for two units			

Ref. No.	Part No.	Description	Reqd. QTY				Serial No.	Parts catalogue code
			EC 3600	EC 3600 K1	EC 4000 K1	EC 4000 K2		
1	12209-ZE8-003	SEAL, VALVE STEM .....	1	1	1	1		
2	14100-ZK3-880	CAMSHAFT ASSY. ....	1	-	-	1		
	14100-Z5K-820	.....	-	1	-	-		
	14100-ZK3-870	.....	-	-	1	-		
3	14410-Z1D-000	ROD, PUSH .....	2	2	2	2	----- BT,FT,GVT,GVWT,ITT	
	14410-ZE2-013	.....	-	-	2	-	----- B,F,GV	
4	14431-ZE2-010	ARM, VALVE ROCKER .....	2	2	2	2		
5	14441-ZE2-000	LIFTER, VALVE .....	2	2	2	2		
6	14451-ZE1-013	PIVOT, ROCKER ARM .....	2	2	2	2		
7	14568-ZE1-000	SPRING, WEIGHT RETURN .....	1	1	1	1		
8	14711-ZE2-000	VALVE, IN. ....	1	-	1	1		
	14711-Z5K-000	.....	-	1	-	-		
9	14721-ZE2-000	VALVE, EX. ....	1	-	1	1		
	14721-Z5K-000	.....	-	1	-	-		
10	14751-Z1C-000	SPRING, VALVE .....	2	2	2	2	----- BT,FT,GVT,GVWT,ITT	
	14751-ZE2-003	.....	-	-	2	-	----- B,F,GV	
11	14771-ZE2-000	RETAINER, IN. VALVE SPRING ..	1	-	1	1		
	14771-Z8S-000	.....	-	1	-	-		
12	14773-ZE2-000	RETAINER, EX. VALVE SPRING ..	1	-	1	1		
	14771-Z8S-000	RETAINER, IN. VALVE SPRING ..	-	1	-	-		
		(EXHAUST SIDE)						
13	14775-ZE2-010	SEAT, VALVE SPRING .....	1	1	1	1		
14	14781-ZE2-000	ROTATOR, VALVE .....	1	-	1	1		
15	14791-ZE2-010	GUIDE, PUSH ROD .....	1	-	1	1		
	14791-Z1D-000	.....	-	1	-	-		
16	90012-ZE0-010	BOLT, PIVOT, 8MM .....	2	2	2	2		

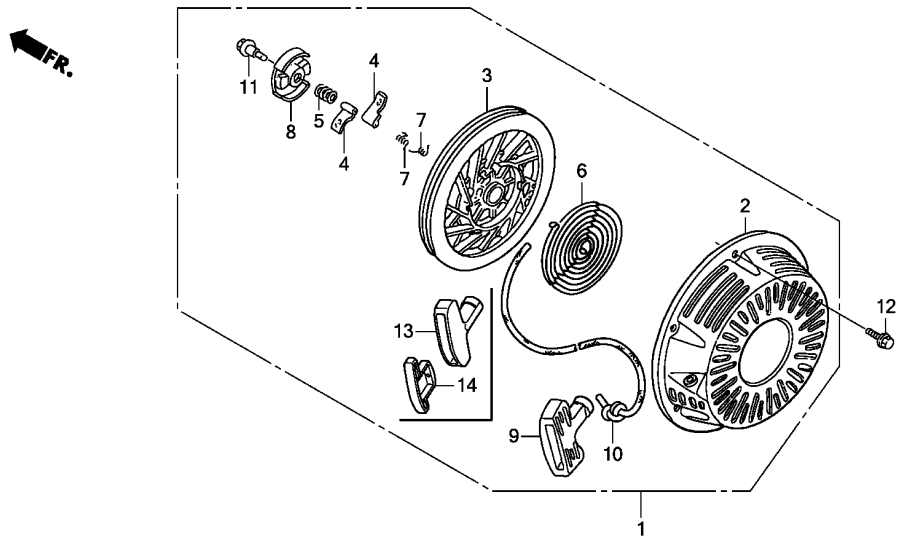


ZP37E0900A

Ref. No.	L.O.N.	(Relative ref. Number) Description	F.R.T.
+ 5	1111M0	LIFTER, VALVE :EXHAUST ..... .NOTE: Same time for two units	2.1
8	1111L1	VALVE, INTAKE ..... .INCLUDES: Valve clearance adjustment and reface	1.3
	1111L1E	.Replace intake and exhaust all add .....	0.2
9	1111L0	VALVE, EXHAUST ..... .INCLUDES: Valve clearance adjustment and reface	1.3
	1111L0E	.Replace intake and exhaust all add .....	0.2
10	1111P3	SPRING, VALVE :INTAKE ..... .INCLUDES: Valve clearance adjustment	1.2
	1111P3A	.Replace intake and exhaust all add .....	0.1
	1111P4	SPRING, VALVE :EXHAUST ..... .INCLUDES: Valve clearance adjustment	1.2
	1111P4A	.Replace intake and exhaust all add .....	0.1
14	1111J7	ROTATOR, VALVE ..... .INCLUDES: Valve clearance adjustment	0.2

Ref. No.	Part No.	Description	Reqd. QTY				Serial No.	Parts catalogue code
			EC 3600	EC 3600 K1	EC 4000 K1	EC 4000 K2		
17	90206-ZE1-000	NUT, PIVOT ADJUSTING .....	2	2	2	2		
18	90413-ZK6-880	WASHER, THRUST, 16.1MM .....	1	1	-	1		





ZP37E1100B

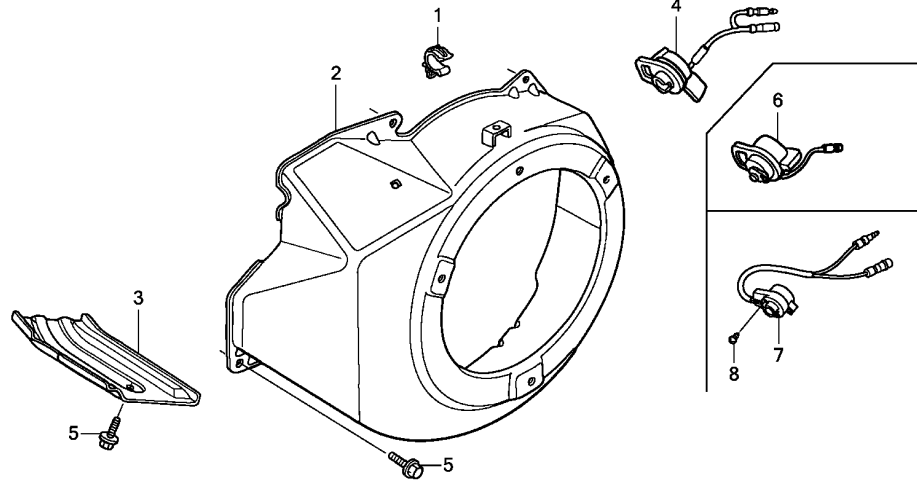
Ref. No.	L.O.N.	(Relative ref. Number) Description	F.R.T.
1	1121B9	STARTER, RECOIL .....	0.1
3	1121B1	REEL, RECOIL STARTER .....	0.3
4	1121B0	RATCHET, STARTER AND/OR SPRING, RATCHET .....	0.2
6	1121B7	SPRING, RECOIL STARTER RETURN .....	0.3
10	1121B3	ROPE, RECOIL STARTER .....	0.3

Ref. No.	Part No.	Description	Reqd. QTY				Serial No.	Parts catalogue code
			EC 3600	EC 3600	EC 4000	EC 4000		
1	28400-ZE2-W01ZG	STARTER ASSY., RECOIL *NH105*...MAT BLACK (#15-#20)	1	-	1	1		
	28400-Z5K-013ZB	*NH1*...BLACK	-	1	-	-		
2	28410-ZE2-W01ZG	CASE COMP., RECOIL STARTER *NH105*...MAT BLACK (#15-#20)	1	-	1	1		
	28410-ZE2-W01ZB	*NH1*...BLACK	-	1	-	-		
3	28421-ZE2-W01	PULLEY, RECOIL STARTER .....	1	1	1	1		
4	28422-ZE2-W01	RATCHET, STARTER .....	2	2	2	2		
5	28441-ZE2-W01	SPRING, FRICTION .....	1	1	1	1		
6	28442-ZE2-W01	SPRING, STARTER RETURN .....	1	1	1	1		
7	28443-ZE2-W01	SPRING, RATCHET .....	2	2	2	2		
8	28444-ZE2-W01	RETAINER, SPRING .....	1	1	1	1		
9	28461-ZE2-W02	GRIP, STARTER .....	1	-	1	1		
10	28462-ZE2-W11	ROPE, RECOIL STARTER .....	1	1	1	1		
11	90004-ZE2-W01	SCREW, CENTER .....	1	1	1	1		
12	90008-ZE2-003	BOLT, FLANGE, 6X10 .....	3	3	3	3		
13	28461-Z5T-003	GRIP, STARTER .....	-	1	-	-		
14	28463-Z5T-013	GRIP, REINFORCEMENT .....	-	1	-	-		

E-12

FAN COVER

D11



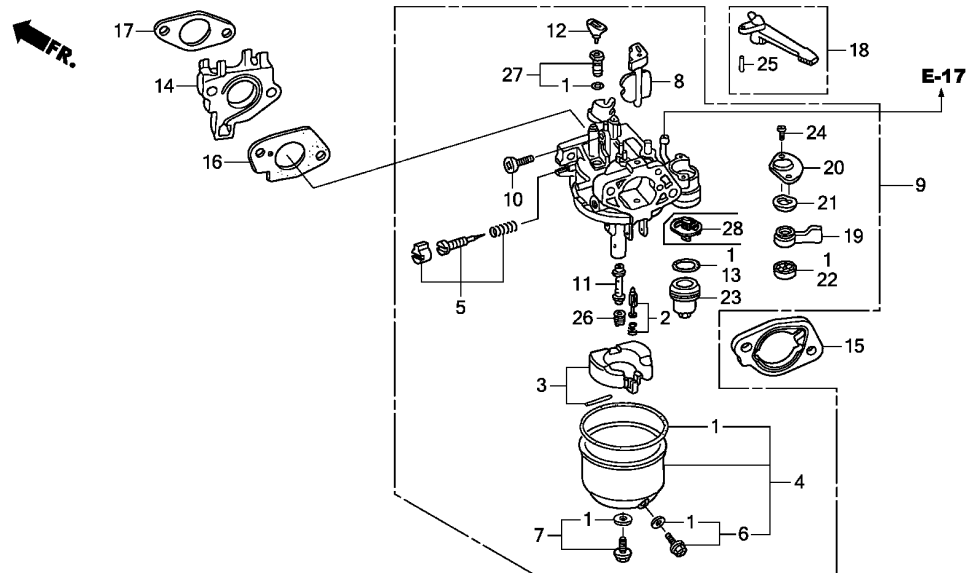
ZP37E1200B

Ref. No.	L.O.N.	(Relative ref. Number) Description	F.R.T.
2	1141G8	COVER, ENGINE COOLING FAN .... (6,7)	0.2
4	6151D9	SWITCH, ENGINE STOP .....	0.2

Ref. No.	Part No.	Description	Reqd. QTY				Serial No.	Parts catalogue code
			EC 3600	EC 3600 K1	EC 4000 K1	EC 4000 K2		
1	16731-ZE2-003	CLIP, TUBE .....	1	1	1	1		
2	19610-ZK2-880ZC	COVER COMP., FAN						
		*NH105*...MAT BLACK (#15-#20)	1	-	-	1		
	19610-Z5K-820ZA	*NH1*...BLACK	-	1	-	-		
	19610-ZE2-010ZG	*NH105*...MAT BLACK (#15-#20)	-	-	1	-		
3	19631-ZE2-D00	SHROUD .....	1	-	1	1		
	19631-Z5K-000	.....	-	1	-	-		
4	36100-ZF6-P81	SWITCH ASSY., ENGINE STOP ...	1	-	1	1	----- BT,FT,GVT,GVWT,ITT	
	36100-ZF6-P82	.....	1	-	-	1	----- 1128481	
	36100-ZH7-003	.....	-	-	1	-	----- B,F,GV	
5	90013-883-000	BOLT, FLANGE, 6X12(CT200) ...	6	6	6	6		
6	35120-Z0T-851	SWITCH ASSY., ENGINE STOP ...	1	-	-	1	1128482 -----	
7	35120-Z5T-003	SWITCH ASSY., ENGINE STOP ...	-	1	-	-		
8	90004-Z5T-000	SCREW, TAPPING, 3X6(P0) .....	-	2	-	-		

2

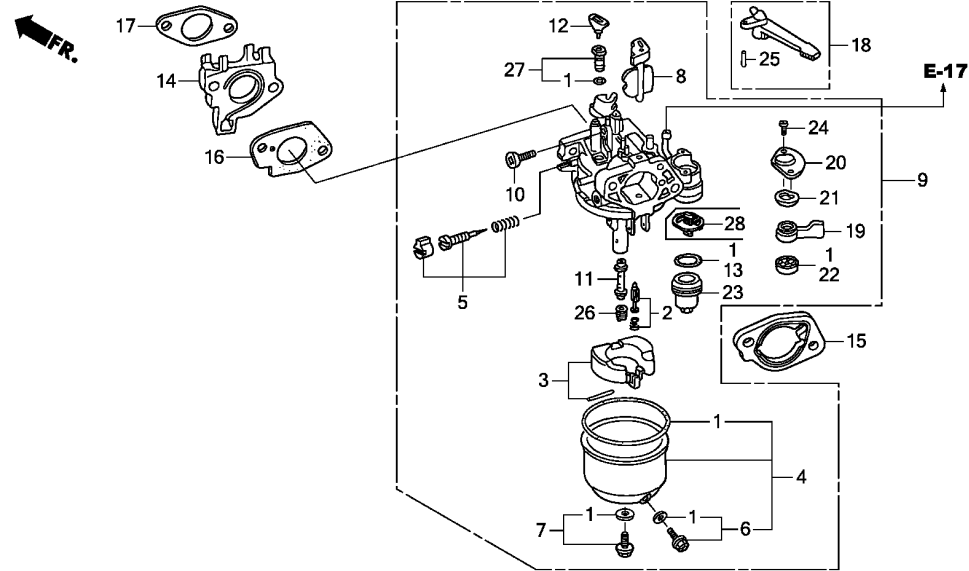




Ref. No.	L.O.N.	(Relative ref. Number) Description	F.R.T.
1	3111B1	GASKET SET, CARBURETOR	0.4
2	3111E1	VALVE SET, FLOAT AND/OR FLOAT SET	0.3
4	3111A3	CHAMBER SET, FLOAT AND/OR GASKET, FLOAT CHAMBER	0.2
5	3111D7	SCREW SET, PILOT	0.2
9	3111F3	CARBURETOR	0.2
13	3101L6	PACKING, FUEL STRAINER CUP (23)	0.2
14	3111C0	INSULATOR, CARBURETOR AND/OR PACKING, INSULATOR	0.2
15	3111D9	SPACER, CARBURETOR	0.2
16	3111C8	PACKING, CARBURETOR	0.2
18	8101F9	LEVER, CARBURETOR CHOKE (19,20,21)	0.2
22	3101C5	PACKING, FUEL COCK (11)	0.2
26	3111C3	JET, MAIN	0.3
28	3111P0	FILTER, CARBURETOR CUP	0.2

ZP37E1400B

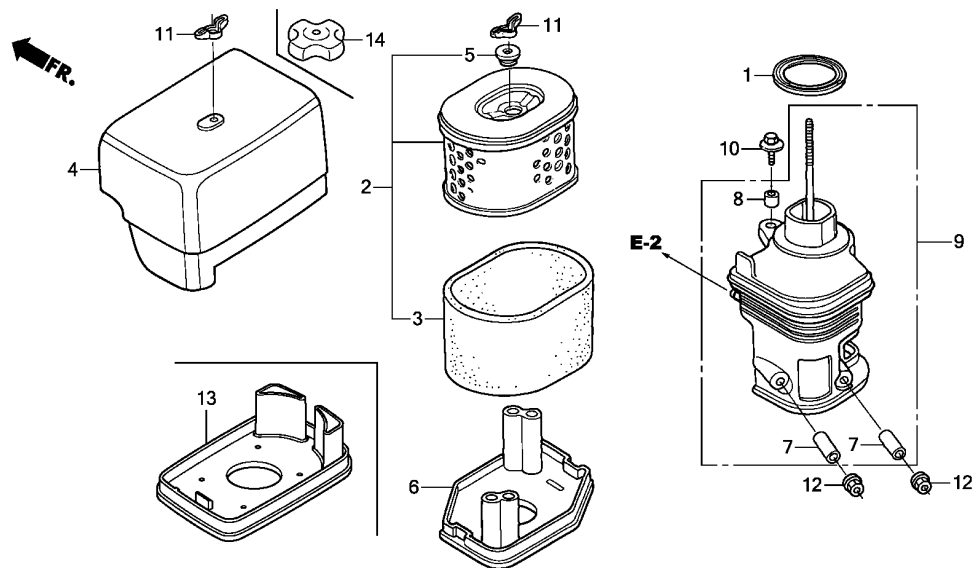
Ref. No.	Part No.	Description	Reqd. QTY				Serial No.	Parts catalogue code
			EC 3600	EC 3600 K1	EC 4000 K1	EC 4000 K2		
1	16010-ZE2-812	GASKET SET	1	1	1	1		
2	16011-ZA0-931	VALVE SET, FLOAT	1	1	1	1		
3	16013-Z1C-003	FLOAT SET	1	1	1	1	----- BT,FT,GVT,GVWT,ITT	
	16013-ZA0-931		-	-	1	-	----- B,F,GV	
4	16015-ZE8-005	CHAMBER SET, FLOAT	1	-	1	1		
	16015-Z5T-901		-	1	-	-		
5	16016-ZH7-W01	SCREW SET, PILOT	1	1	1	1		
6	16024-ZE1-811	SCREW SET, DRAIN	1	-	1	1		
7	16028-ZE0-005	SCREW SET	1	-	1	1		
	16028-Z5T-901		-	1	-	-		
8	16044-ZE2-005	CHOKE SET	1	1	1	1		
9	16100-Z1D-W21	CARBURETOR ASSY.(BE78B A)	1	-	1	1	----- BT,FT,GVT,GVWT,ITT	
	16100-Z5K-Y01	CARBURETOR ASSY.(BE21J A)	-	-	1	-		
	16100-ZH9-W21	CARBURETOR ASSY.(BE75B B/C)	-	-	1	-	----- B,F,GV	
10	16124-ZE0-005	SCREW, THROTTLE STOP	1	1	1	1		
11	16166-ZH9-W20	NOZZLE, MAIN	1	-	1	1		
	16166-Z5K-Y01		-	1	-	-		
12	16172-ZE3-W10	COLLAR, SETTING	1	-	1	1		
13	16173-001-004	PACKING, FUEL STRAINER CUP	1	1	1	1		
14	16211-ZE2-000	INSULATOR, CARBURETOR	1	-	1	1		
	16211-ZE2-010		-	1	-	-		
15	16220-ZA0-702	SPACER COMP., CARBURETOR	1	1	1	1		
16	16221-ZA0-800	PACKING, CARBURETOR	1	-	1	1		
	16221-Z5K-000		-	1	-	-		
17	16223-ZA0-800	PACKING, INSULATOR	1	-	1	1		
	16212-Z5K-000		-	1	-	-		



ZP37E1400B

Ref. No.	Part No.	Description	Reqd. QTY				Serial No.	Parts catalogue code
			EC 3600	EC 3600 K1	EC 4000 K1	EC 4000 K2		
18	16610-ZE1-000	LEVER COMP., CHOKE(STD.)	1	1	1	1		
19	16953-ZE1-812	LEVER, COCK	1	1	1	1		
20	16954-ZE1-812	PLATE, LEVER SETTING	1	1	1	1		
21	16956-ZE1-811	SPRING, COCK LEVER	1	1	1	1		
22	16957-ZE1-812	PACKING, FUEL COCK	1	1	1	1		
23	16967-ZE0-811	CUP, FUEL STRAINER	1	1	1	1		
24	93500-03006-1H	SCREW, PAN, 3X6	2	2	2	2		
25	94305-20122	PIN, SPRING, 2X12	1	1	1	1		
26	99101-ZH8-0800	JET, MAIN, #80	(1)	(1)	(1)	(1)		
	99101-ZH8-0820	JET, MAIN, #82	(1)	(1)	(1)	(1)		
	99101-ZH8-0850	JET, MAIN, #85	1	-	1	1		
	99101-ZH8-0880	JET, MAIN, #88	-	1	-	-		
27	99204-ZE2-0400	JET SET, PILOT, #40	1	-	1	1		
	99204-ZE2-0380	JET SET, PILOT, #38	-	1	-	-		
28	16959-Z5T-901	FILTER, CUP	-	1	-	-		

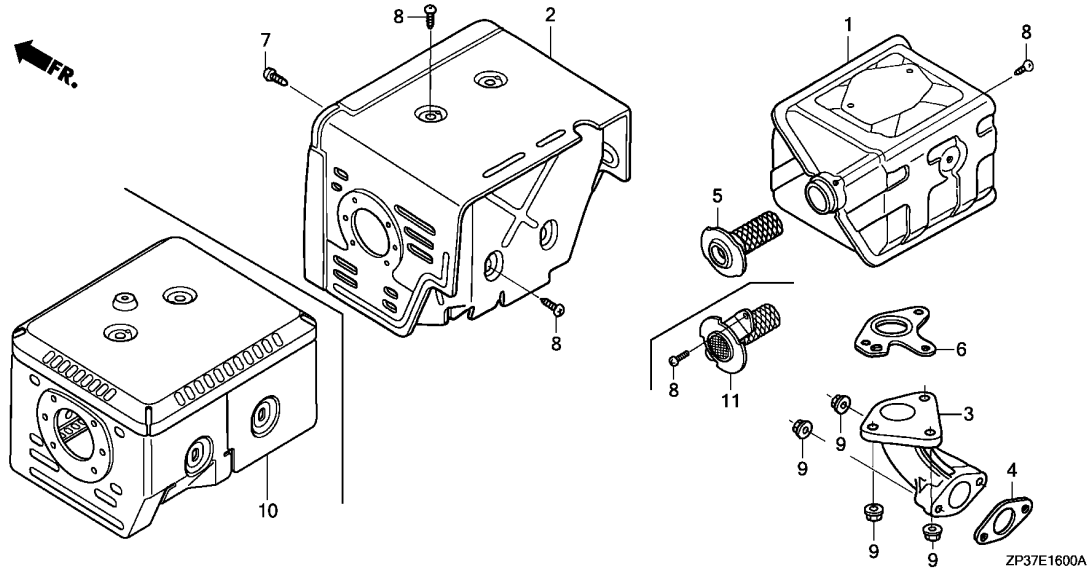




Ref. No.	L.O.N.	(Relative ref. Number) Description	F.R.T.
1	3121R3	PACKING, AIR CLEANER CASE ....	0.1
2	3121B8	ELEMENT, AIR CLEANER ..... .INCLUDES: Air cleaner element -inspection	0.1
3	3121C1	FILTER, OUTER ..... .INCLUDES: Outer filter-inspection	0.1
6	3121D6	NOSE, SILENCER .....	0.1
9	3121B4	ELBOW, AIR CLEANER .....	0.1

ZP37E1500A

Ref. No.	Part No.	Description	Reqd. QTY				Serial No.	Parts catalogue code
			EC 3600	EC 3600 K1	EC 4000 K1	EC 4000 K2		
1	16271-ZE2-010	PACKING, ELBOW .....	1	-	1	1		
	17417-Z5T-000	PACKING, AIR CLEANER CASE ...	-	1	-	-		
2	17210-ZE3-010	ELEMENT, AIR CLEANER .....	1	-	1	1		
	17210-ZE2-822	ELEMENT, AIR CLEANER(DUAL) ..	-	1	-	-		
3	17218-ZE3-000	FILTER, OUTER .....	1	-	1	1		
	17218-ZE2-821	.....	-	1	-	-		
4	17231-ZH9-N01	COVER, AIR CLEANER(100DB) ...	1	-	1	1		
	17231-Z5K-000	COVER, AIR CLEANER CASE .....	-	1	-	-		
5	17232-891-000	GROMMET, AIR CLEANER .....	1	1	1	1		
6	17235-ZH9-N01	NOSE, SILENCER .....	1	-	-	1		
	17235-ZH9-N00	.....	-	-	1	-		
7	17238-ZE2-310	COLLAR, AIR CLEANER .....	2	2	2	2		
8	17239-ZE1-000	COLLAR B, AIR CLEANER .....	1	1	1	1		
9	17410-ZH9-N00	ELBOW COMP., AIR CLEANER ...	1	-	1	1		
	17410-Z5K-010	.....	-	1	-	-		
10	90009-Z1C-000	BOLT-WASHER, 6X22 .....	1	1	1	1	----- BT, FT, GVT, GVWT, ITT	
	90009-ZE2-003	.....	-	-	1	-	----- B, F, GV	
11	90325-044-000	NUT, TOOL BOX SETTING .....	2	1	2	2		
12	94050-06000	NUT, FLANGE, 6MM .....	2	2	2	2		
13	17235-Z5K-000	NOSE, SILENCER .....	-	1	-	-		
14	90202-Z2E-000	NUT, AIR CLEANER COVER .....	-	1	-	-		



Ref. No.	L.O.N.	(Relative ref. Number) Description	F.R.T.
1	3131C5	MUFFLER, EXHAUST (10)	0.2
2	3131D6	PROTECTOR, EXHAUST MUFFLER (4,6)	0.2
3	3131C9	PIPE, EXHAUST (11)	0.2
5	3131A1	ARRESTER, SPARK .INCLUDES: Spark arrester check	0.2

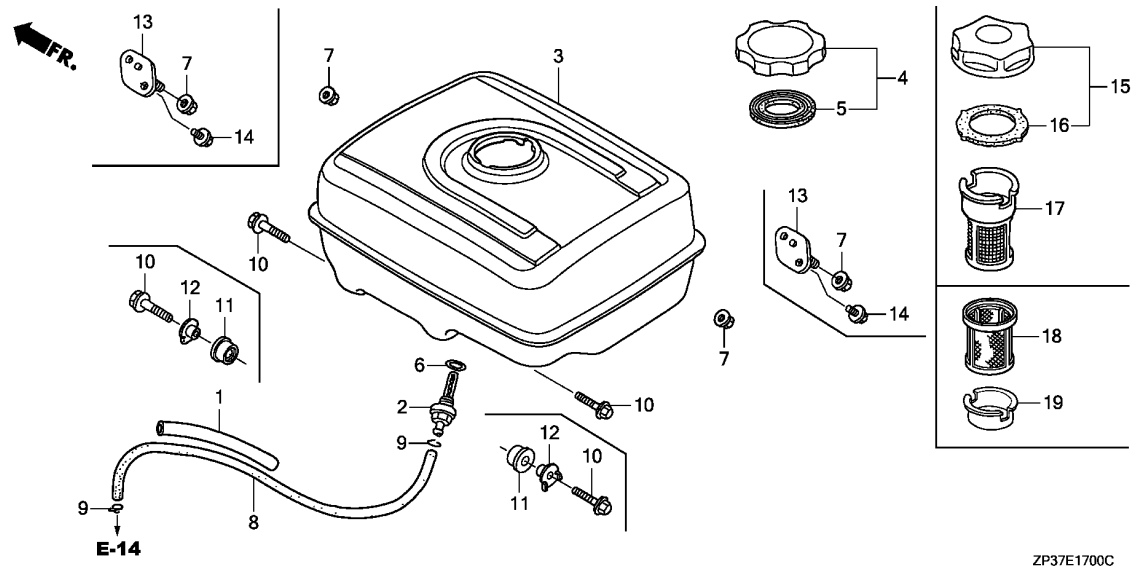
Ref. No.	Part No.	Description	Reqd. QTY				Serial No.	Parts catalogue code
			EC 3600	EC 3600 K1	EC 4000 K1	EC 4000 K2		
1	18310-ZK6-880	MUFFLER COMP. ....	1	-	-	1		
	18310-Z5K-000	.....	-	1	-	-		
	18310-ZE2-W61	MUFFLER COMP.(100DB) .....	-	-	1	-		
2	18320-ZF6-W01	PROTECTOR COMP., MUFFLER (100DB)	1	-	1	1		
3	18330-ZH9-N00	PIPE, EX. ....	1	-	1	1		
	18331-Z5T-000	.....	-	1	-	-		
4	18333-Z1C-801	GASKET, EX. PIPE .....	-	1	-	-		
	18333-ZF6-W01	.....	-	-	1	-	B,F,GV	
5	18355-ZE2-W00	ARRESTER, SPARK .....	1	-	1	1		
6	18381-ZE2-W10	GASKET, MUFFLER(ARRESTER) (NIPPON LEAKLESS)	1	1	1	1		
	18381-Z8S-801	GASKET, MUFFLER(ARRESTER) (THAI LEAKLESS)	-	1	1	1	BT,FT,GVT,GVWT,ITT	
7	90006-ZE2-000	SCREW, TAPPING, 6X10 .....	1	1	1	1		
8	90050-ZE1-000	SCREW, TAPPING, 5X8 .....	5	6	5	5		
9	94050-08000	NUT, FLANGE, 8MM .....	5	5	5	5		
10	18320-Z5K-800	PROTECTOR COMP., MUFFLER (100DB)	-	1	-	-		
11	18350-Z5T-800	ARRESTER COMP., SPARK .....	-	1	-	-		



E-17

FUEL TANK

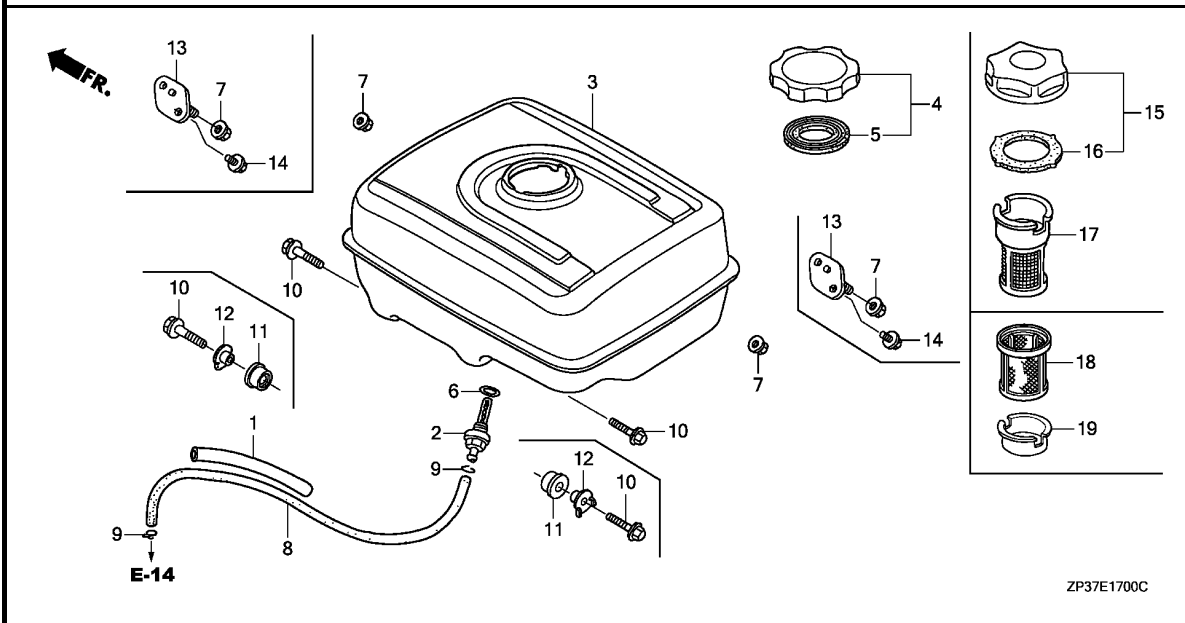
D16



Ref. No.	L.O.N.	(Relative ref. Number) Description	F.R.T.
2		(6)	
3101H6		JOINT, FUEL STRAINER .....	0.2
3		3101H7 TANK, FUEL .....	0.3
8		3101F1 TUBE, FUEL TANK .....	0.2
17		(18)	
3101A6		FILTER, FUEL .....	0.1

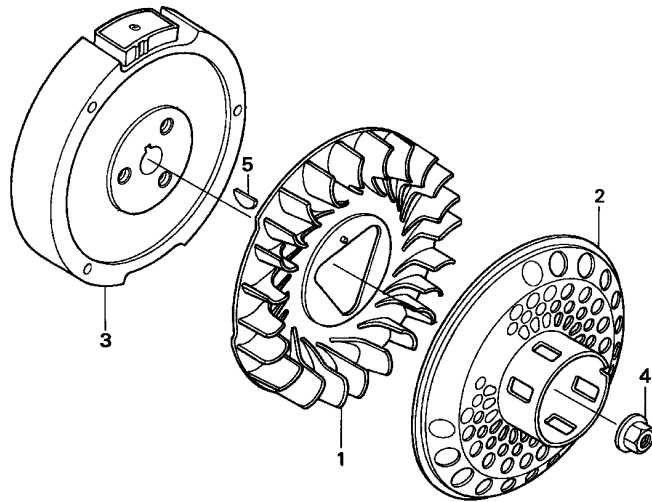
Ref. No.	Part No.	Description	Reqd. QTY				Serial No.	Parts catalogue code
			EC 3600	EC 3600 K1	EC 4000 K1	EC 4000 K2		
1	16854-ZH8-000	RUBBER, SUPPORTER(107MM) ....	1	1	1	1		
2	16955-ZE1-000	JOINT, FUEL TANK .....	1	-	1	1		
	16955-ZE1-010	.....	-	1	-	-		
3	17510-ZK2-881ZD	TANK COMP., FUEL						
	*R280*	.....POWER RED	1	-	-	1	1104779 -----	
	17510-Z5K-800	TANK ASSY., FUEL .....	-	1	-	-		
	17510-ZE2-020ZH	TANK COMP., FUEL						
	*R280*	.....POWER RED	-	-	-	1		
	17510-ZK2-880ZD	*R280*.....POWER RED	-	-	-	1	----- 1104778	
4	17620-Z0T-305	CAP COMP., FUEL FILLER (CHROME PLATED)(TOYOSHA)	-	-	1	-	----- B,F,GV	
	17620-Z0T-813	CAP COMP., FUEL FILLER (CHROME PLATED)(RADICON)	-	-	1	-	----- BT,FT,GVT	
			-	-	-	1	----- 1095200	
5	17631-Z0T-812	PACKING, FUEL FILLER CAP (39X62X3)(TOYOSHA)	-	-	1	-	----- B,F,GV	
	17631-Z0T-801	PACKING, FUEL FILLER CAP (39X62X3)(RADICON)	-	-	1	-	----- BT,FT,GVT	
			-	-	-	1	----- 1095200	
6	91353-671-004	O-RING, 14MM(NOK) .....	1	1	1	1		
7	94050-08000	NUT, FLANGE, 8MM .....	2	2	2	2		
8	95001-45222-40	TUBE, FUEL, 4.5X222 (95001-45001-60M)	1	-	1	1		
	95001-45210-40	TUBE, FUEL, 4.5X210 (95001-45001-60M)	-	1	-	-		
9	95002-02080	CLIP, TUBE(B8) .....	2	2	2	2		
10	95701-08025-00	BOLT, FLANGE, 8X25 .....	2	2	2	2		

2



Ref. No.	Part No.	Description	Reqd. QTY				Serial No.	Parts catalogue code
			EC 3600	EC 3600 K1	EC 4000 K1	EC 4000 K2		
11	17532-ZK6-880	RUBBER A, TANK MOUNTING .....	2	-	-	2	----- 1150254	
	17532-ZK6-881	.....	2	-	-	2	1150255 -----	
			-	2	-	-		
12	17534-ZK6-880	NUT, TANK MOUNTING .....	2	-	-	2	----- 1150254	
	17534-ZK6-881	.....	2	-	-	2	1150255 -----	
			-	2	-	-		
13	17536-ZK6-880	RUBBER COMP., TANK MOUNTING ..	2	2	-	2		
14	95701-06010-00	BOLT, FLANGE, 6X10 .....	4	4	-	4		
15	17620-ZE1-H02	CAP COMP., FUEL FILLER .....	1	-	-	1	1095201 1099698	
	17620-ZE1-H03	.....	1	-	-	1	1099699 -----	
			-	1	-	-		
16	17631-329-003	PACKING, FUEL FILLER CAP (39X58X3)	1	-	-	1	1095201 -----	
			-	1	-	-		
17	17670-ZH8-D01	FILTER COMP., FUEL .....	1	-	-	1		
18	17670-ZB2-800	FILTER COMP., FUEL .....	-	1	-	-		
19	17673-893-000	HOLDER, FUEL FILTER .....	-	1	-	-		

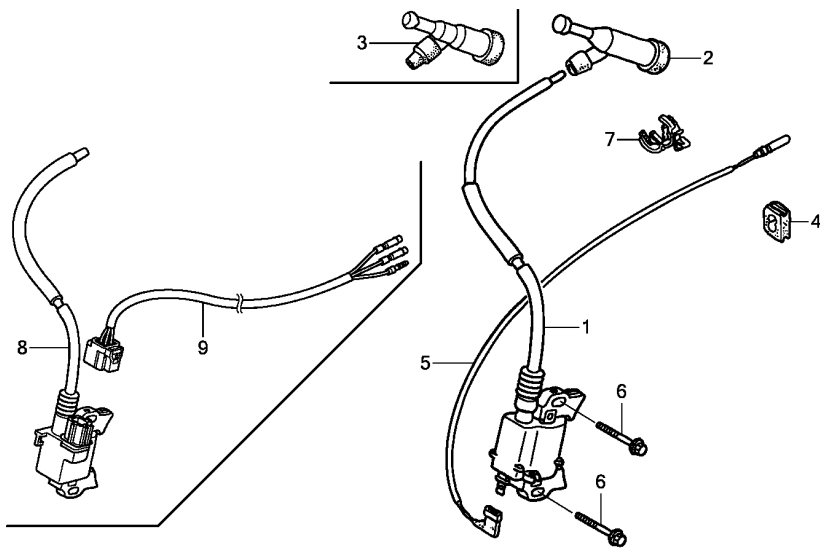
FR.



ZP37-E1900

Ref. No.	L.O.N.	(Relative ref. Number) Description	F.R.T.
1	1141G7	FAN, ENGINE COOLING .....	0.4
2	1121A9	PULLEY, RECOIL STARTER .....	0.4
3	2161B5	FLYWHEEL .....	0.5

Ref. No.	Part No.	Description	Reqd. QTY				Serial No.	Parts catalogue code
			EC 3600	EC 3600 K1	EC 4000 K1	EC 4000 K2		
1	19511-ZE2-000	FAN, COOLING .....	1	1	1	1		
2	28450-ZE2-W11	PULLEY COMP., STARTER (SCREEN GRID)	1	1	1	1		
3	31100-ZE2-010	FLYWHEEL COMP. ....	1	-	1	1		
	31110-Z5K-000	.....	-	1	-	-		
4	90201-ZE3-790	NUT, SPECIAL, 16MM .....	1	-	-	1		
	90201-ZE3-V00	.....	-	1	1	-		
5	90741-ZE2-000	KEY, SPECIAL WOODRUFF, 25X18	1	1	1	1		



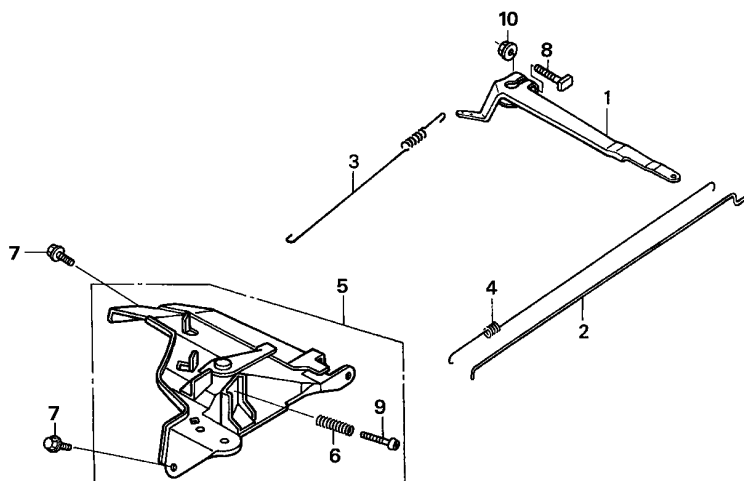
ZP37E2000A

Ref. No.	L.O.N.	(Relative ref. Number) Description	F.R.T.
1		(8) COIL, IGNITION(ONE) .....	0.4
2		(3) TERMINAL, HIGH TENSION .....	0.1
5		6111B3 CORD, STOP SWITCH .....	0.3

Ref. No.	Part No.	Description	Reqd. QTY				Serial No.	Parts catalogue code
			EC 3600	EC 3600 K1	EC 4000 K1	EC 4000 K2		
1	30500-Z1C-023	COIL ASSY., IGNITION .....	1	-	1	1	1076439 -----	BT,FT,GVT,GVWT,ITT
	30500-Z1C-013	.....	-	-	1	1	1076438 -----	BT,FT,GVT,GVWT,ITT
	30500-ZF6-W02	.....	-	-	1	-	-----	B,F,GV
2	30700-ZE1-013	CAP ASSY., NOISE SUPPRESSOR (NICHIIWA Y-EZ RTFM256)	-	-	1	-	-----	B,F,GV
3	30700-Z1C-811	CAP ASSY., NOISE SUPPRESSOR (NGK Y-EZD)	1	1	1	1	-----	BT,FT,GVT,GVWT,ITT
4	31512-ZE2-000	GROMMET, CORD .....	1	1	1	1		
5	36101-ZE1-010	CORD, STOP SWITCH(370MM) ....	1	-	1	1		
6	90015-883-000	BOLT, FLANGE, 6X28(CT200) ...	2	2	2	2		
7	90684-ZA0-601	CLIP, HARNESS .....	1	1	1	1		
8	30500-Z5K-003	COIL ASSY., IGNITION .....	-	1	-	-		
9	32110-Z5K-000	HARNESS ASSY., ENGINE WIRE ..	-	1	-	-		



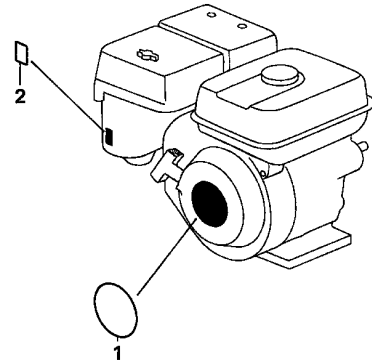




ZP37-E2200

Ref. No.	L.O.N.	(Relative ref. Number) Description	F.R.T.
1	1161A0	ARM, GOVERNOR .....	0.3
2	1161B1	ROD, GOVERNOR .....	0.3
3	1161C5	SPRING, GOVERNOR .....	0.3
4	1161C2	SPRING, THROTTLE RETURN .....	0.3
5	1161A5	CONTROL, THROTTLE/GOVERNOR ...	0.2

Ref. No.	Part No.	Description	Reqd. QTY				Serial No.	Parts catalogue code
			EC 3600	EC 3600 K1	EC 4000 K1	EC 4000 K2		
1	16551-ZE2-000	ARM, GOVERNOR .....	1	1	1	1		
2	16555-ZE2-000	ROD, GOVERNOR .....	1	1	1	1		
3	16561-ZE2-000	SPRING, GOVERNOR(L=145.0MM) (WIRE DIAMETER 1.0MM)	1	1	1	1		
	16561-ZE2-800	SPRING, GOVERNOR(L=142.0MM) -	(1)	(1)	(1)	(1)		
4	16562-ZE2-000	SPRING, THROTTLE RETURN .....	1	1	1	1		
5	16570-ZE2-722	CONTROL ASSY. ....	1	-	1	1	1060425 ----- BT,FT,GVT,GVWT,ITT	
	16500-Z5K-871	.....	-	1	-	-		
	16570-ZE2-721	.....	-	-	1	1	----- 1060424 BT,FT,GVT,GVWT,ITT	
			-	-	1	-	----- 2419948 B,F,GV	
	16570-ZE2-722	.....	-	-	1	-	----- 2419949 ----- B,F,GV	
6	16584-883-300	SPRING, CONTROL ADJUSTING ...	1	1	1	1		
7	90013-883-000	BOLT, FLANGE, 6X12(CT200) ...	2	2	2	2		
8	90015-ZE5-010	BOLT, GOVERNOR ARM .....	1	-	1	1		
	90015-Z5T-000	.....	-	1	-	-		
9	93500-05035-0A	SCREW, PAN, 5X35 .....	1	1	1	1		
10	94050-06000	NUT, FLANGE, 6MM .....	1	1	1	1		



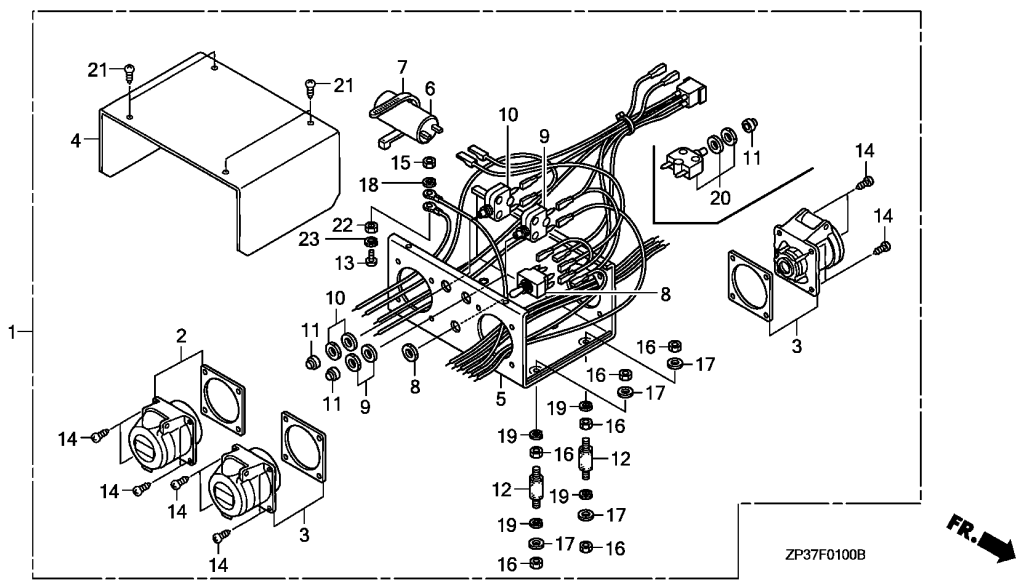
ZP37-E2800

Ref. (Relative ref. Number)  
No. L.O.N. Description F.R.T.

NO INFORMATION .....

Ref. No.	Part No.	Description	Reqd. QTY				Serial No.	Parts catalogue code
			EC 3600	EC 3600 K1	EC 4000 K1	EC 4000 K2		
1	87521-ZH9-040	EMBLEM(GX270) .....	1	-	1	1	1092599 ----- BT,FT,GVT,GVWT,ITT	
	87521-Z5K-000	.....	-	1	-	-		
	87521-ZH9-030	EMBLEM(GX270 9.0) .....	-	-	1	1	----- 1092598 BT,FT,GVT,GVWT,ITT	
			-	-	1	-	----- B,F,GV	
2	87528-ZE2-810	MARK, CHOKE (ORANGE) .....	1	-	1	1		
	87528-Z5T-000	MARK, CHOKE .....	-	1	-	-		

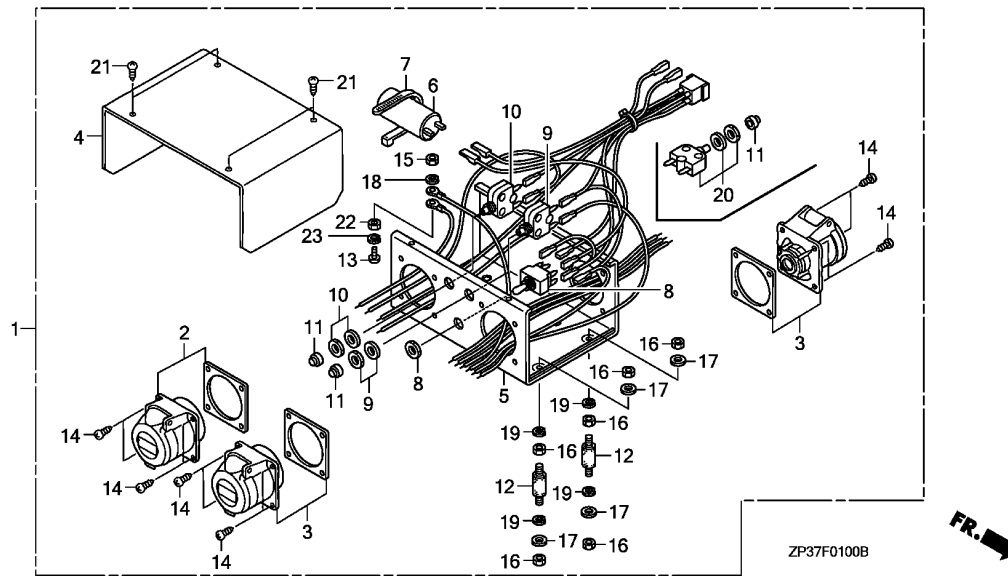




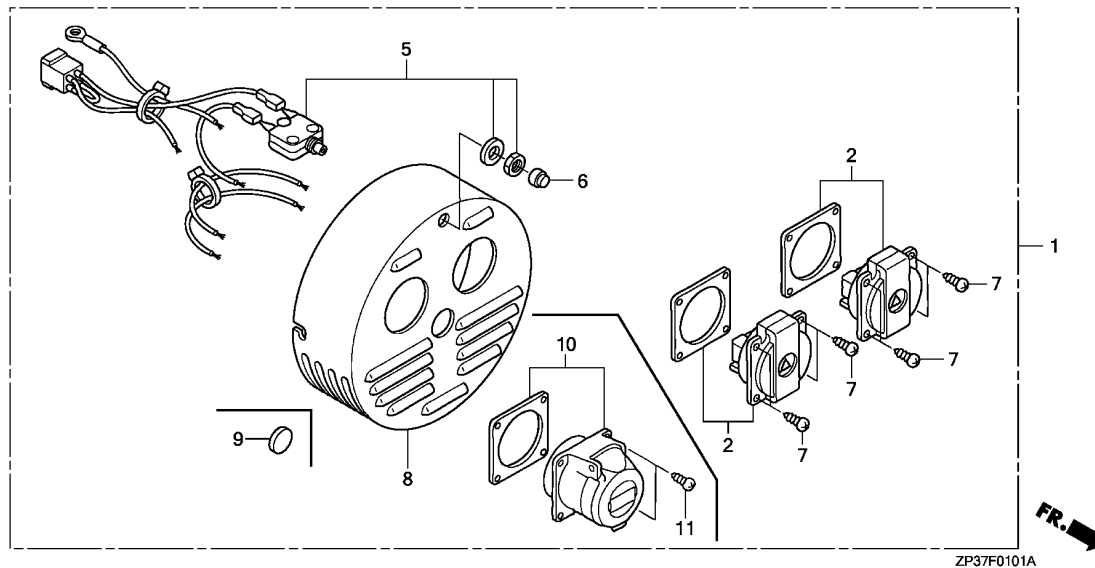
Ref. No.	L.O.N.	(Relative ref. Number) Description	F.R.T.
1	6221A2	BOX, GENERATOR CONTROL (3)	0.2
2	6221D5	RECEPTACLE/CONSENT, CONTROL PANEL	0.3
	6221E5	RECEPTACLE/CONSENT, CONTROL PANEL :ALL	0.4
4	4131N7	COVER, CONTROL PANEL	0.1
6	6221J9	CONDENSER, CONTROL BOX (10,20)	0.2
9	6131C4	BREAKER, CIRCUIT	0.3
	6131C4A	.Replace one add	0.1

3

Ref. No.	Part No.	Description	Reqd. QTY				Serial No.	Parts catalogue code
			EC 3600	EC 3600 K1	EC 4000 K1	EC 4000 K2		
1	31400-ZP3-G92	BOX ASSY., CONTROL	1	1	-	-	BT	
	31400-ZP3-G91		-	-	1	1	B,BT	
2	32331-ZP3-G92	RECEPTACLE(16A/240V)	1	1	-	-	BT	
	32331-ZD5-G91		-	-	1	1	B,BT	
3	32331-ZD5-V92	RECEPTACLE(16A/120V)	2	2	-	-	BT	
	32332-ZD5-V91		-	-	2	-	B,BT	
	32331-ZD5-V91		-	-	-	2	BT	
4	32351-ZP3-003	COVER, CONTROL BOX	1	1	1	1	B,BT	
5	32356-ZP3-013	CASE, CONTROL BOX	1	1	-	-	BT	
	32356-ZP3-003		-	-	1	1	B,BT	
6	32382-ZP3-023	CONDENSER	1	1	-	-	BT	
	32382-ZP3-013		-	-	1	1	B,BT	
7	32901-ZD5-003	TIE, CABLE	1	1	1	1	B,BT	
8	35320-ZP3-A90	SWITCH, VOLT CHANGE	1	1	-	-	BT	
	35320-ZD5-G91		-	-	1	1	B,BT	
9	38220-ZP3-821	BREAKER, CIRCUIT(17A)	1	1	-	-	BT	
	38220-ZP3-G91	BREAKER, CIRCUIT(30A)	-	-	1	1	B,BT	
10	38220-ZP3-821	BREAKER, CIRCUIT(17A)	1	1	-	1	BT	
	38220-ZP3-003	BREAKER, CIRCUIT(15A)	-	-	1	-	B,BT	
11	38229-ZD5-003	CAP, WATER PROTECTION	3	3	2	2	B,BT	
12	68331-ZP3-003	MOUNT, RUBBER CONTROL BOX	4	4	4	4	B,BT	
13	93500-04010	SCREW, PAN, 4X10	1	1	1	1	B,BT	
14	93901-44310	SCREW, TAPPING, 4X12	12	12	12	12	B,BT	
15	94001-04000-0S	NUT, HEX., 4MM	1	1	1	1	B,BT	
16	94001-05000-0S	NUT, HEX., 5MM	12	12	12	12	B,BT	
17	94101-05800	WASHER, PLAIN, 5MM	8	8	8	8	B,BT	



Ref. No.	Part No.	Description	Reqd. QTY				Serial No.	Parts catalogue code
			EC 3600	EC 3600 K1	EC 4000 K1	EC 4000 K2		
18	94111-04800	WASHER, SPRING, 4MM .....	1	1	1	1	-----	B,BT
19	94111-05800	WASHER, SPRING, 5MM .....	8	8	8	8	-----	B,BT
20	38220-ZP3-821	BREAKER, CIRCUIT(17A) .....	1	1	-	-	-----	BT
21	93901-14210	SCREW, TAPPING, 4X10 .....	4	4	-	-	-----	BT
	93901-44310	SCREW, TAPPING, 4X12 .....	-	-	4	4	-----	B,BT
22	94001-04000-0S	NUT, HEX., 4MM .....	1	1	-	-	-----	BT
23	94111-04800	WASHER, SPRING, 4MM .....	1	1	-	-	-----	BT



Ref. No.	L.O.N.	(Relative ref. Number) Description	F.R.T.
1	6221A2	BOX, GENERATOR CONTROL .....	0.2
2	6221D5	RECEPTACLE/CONSENT, CONTROL PANEL .....	0.3
	6221J3	RECEPTACLE/CONSENT, CONTROL PANEL(A) :ALL .....	0.4
5	6131C4	BREAKER, CIRCUIT .....	0.3
8	6221R1	COVER, GENERATOR END (GENERATOR CONTROL PANEL) ...	0.4

3

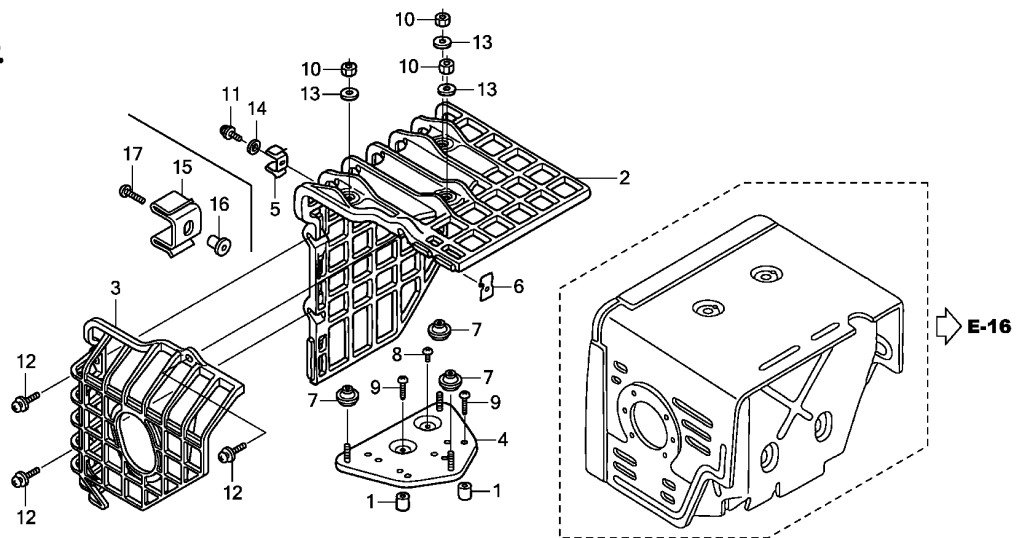
Ref. No.	Part No.	Description	Reqd. QTY				Serial No.	Parts catalogue code
			EC 3600	EC 3600 K1	EC 4000 K1	EC 4000 K2		
1	31400-ZP3-H51	BOX ASSY., CONTROL .....	1	1	1	1	-----	F,FT
	31400-ZP3-H41	.....	1	1	1	1	-----	GV,GVT,GVWT
	31400-ZP3-821	.....	1	1	-	1	-----	ITT
2	32331-ZP3-H54	RECEPTACLE(16A/250V) .....	2	2	-	-	-----	FT
	32331-ZP3-033	.....	2	2	-	-	-----	GVT,GVWT
		.....	1	1	-	-	-----	ITT
	32331-ZD5-H51	.....	-	-	2	-	-----	F,FT
	32331-ZD5-H41	.....	-	-	2	-	-----	GV,GVT
	32331-ZP3-741	.....	-	-	-	2	-----	FT
	32331-ZP3-821	.....	-	-	-	2	-----	GVT,GVWT
		.....	-	-	-	1	-----	ITT
5	38220-ZP3-821	BREAKER, CIRCUIT(17A) .....	1	1	-	1	-----	FT,GVT,GVWT,ITT
	38220-ZP3-003	BREAKER, CIRCUIT(15A) .....	-	-	1	-	-----	F,FT,GV,GVT
6	38229-ZD5-003	CAP, WATER PROTECTION .....	1	1	1	1	-----	F,FT,GV,GVT,GVWT,ITT
7	93901-14210	SCREW, TAPPING, 4X10 .....	8	8	-	-	-----	FT,GVT,GVWT
		.....	4	4	-	-	-----	ITT
	93901-44310	SCREW, TAPPING, 4X12 .....	-	-	8	-	-----	F,FT,GV,GVT
	93901-24310	.....	-	-	-	8	-----	FT,GVT,GVWT
		.....	-	-	-	4	-----	ITT
8	31186-ZD5-H42	COVER, GENERATOR END .....	1	1	1	1	-----	F,FT,GV,GVT,GVWT
	31186-ZP3-821	.....	1	1	-	1	-----	ITT
	31189-ZD5-003	CAP, COVER END .....	-	-	-	1	-----	ITT
10	32331-ZP3-G92	RECEPTACLE(16A/240V) .....	1	1	-	-	-----	ITT
	32331-ZD5-G91	.....	-	-	-	1	-----	ITT
11	93901-44310	SCREW, TAPPING, 4X12 .....	4	4	-	4	-----	ITT

# F-15-10

# MUFFLER COVER

**F 4**

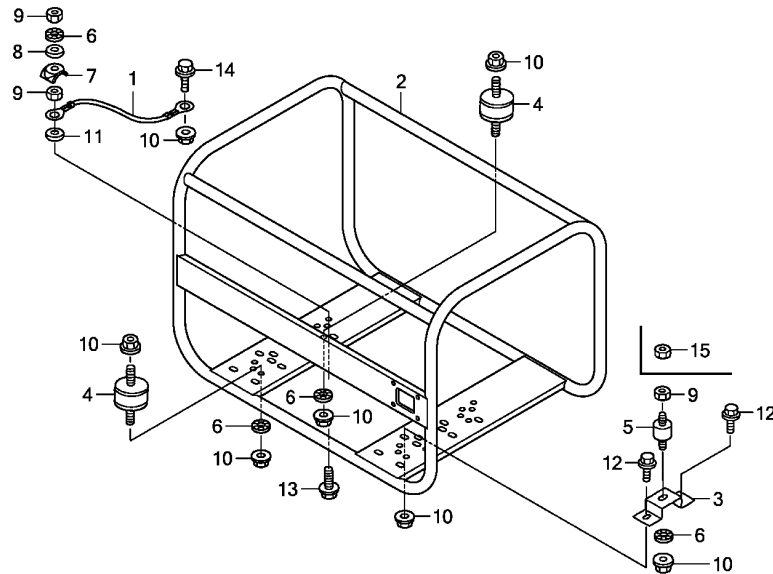
FR.



Ref. No.	L.O.N.	(Relative ref. Number) Description	F.R.T.
2	3131J4	COVER, MUFFLER PROTECTOR .....	0.1
3	3131J5	COVER, MUFFLER PROTECTOR :LEFT	0.1
4	3131Q1	BASE, MUFFLER COVER .....	0.2

Ref. No.	Part No.	Description	Reqd. QTY				Serial No.	Parts catalogue code
			EC 3600	EC 3600 K1	EC 4000 K1	EC 4000 K2		
1	17233-896-701	COLLAR, AIR CLEANER CASE .....	2	2	-	-		
2	18433-ZF6-W40	COVER COMP., MUFFLER .....	1	-	-	-		
	18433-ZK9-W41	.....	-	1	-	-		
3	18434-ZP3-690	COVER, MUFFLER .....	1	-	-	-		
	18434-ZK9-W41	COVER COMP., RR. MUFFLER .....	-	1	-	-		
4	18436-ZH8-W40	BASE COMP., MUFFLER COVER .....	1	1	-	-		
5	18437-ZF6-W40	STAY, MUFFLER COVER .....	1	-	-	-		
6	18438-ZF6-W40	PLATE, SET .....	1	-	-	-		
7	18466-ZH8-W40	SPACER, MUFFLER COVER .....	3	3	-	-		
8	90050-ZE1-000	SCREW, TAPPING, 5X8 .....	1	1	-	-		
9	90050-ZH8-W40	SCREW, TAPPING, 5X25 .....	2	2	-	-		
10	90302-KF9-900	NUT, HEX., 5MM .....	3	3	-	-		
11	93891-05012-00	SCREW-WASHER, 5X12 .....	1	-	-	-		
12	93891-06020-07	SCREW-WASHER, 6X20 .....	3	3	-	-		
13	94103-05700	WASHER, PLAIN, 5MM .....	3	3	-	-		
14	94111-05000	WASHER, SPRING, 5MM .....	1	-	-	-		
15	18437-Z5T-000	STAY, MUFFLER COVER .....	-	1	-	-		
16	19619-ZL8-300	COLLAR, FAN COVER .....	-	1	-	-		
17	90006-Z5T-000	SCREW, TAPPING, 6X25 .....	-	1	-	-		

**3**



Ref. No.	L.O.N.	(Relative ref. Number) Description	F.R.T.
1	6111A4	CABLE, EARTH .....	0.1
2	4101H6	FRAME, MAIN .....	0.5
		.INCLUDES: Engine removal and installation	
4	4101Z0	RUBBER, ENGINE MOUNTING :LEFT REAR .....	0.4
		.INCLUDES: Engine removal and installation	
		.NOTE: Same time for two units	
	4101Z1	RUBBER, ENGINE MOUNTING :RIGHT REAR .....	0.4
		.INCLUDES: Engine removal and installation	
		.NOTE: Same time for two units	
5	4101DC	RUBBER, GENERATOR MOUNTING ...	0.3

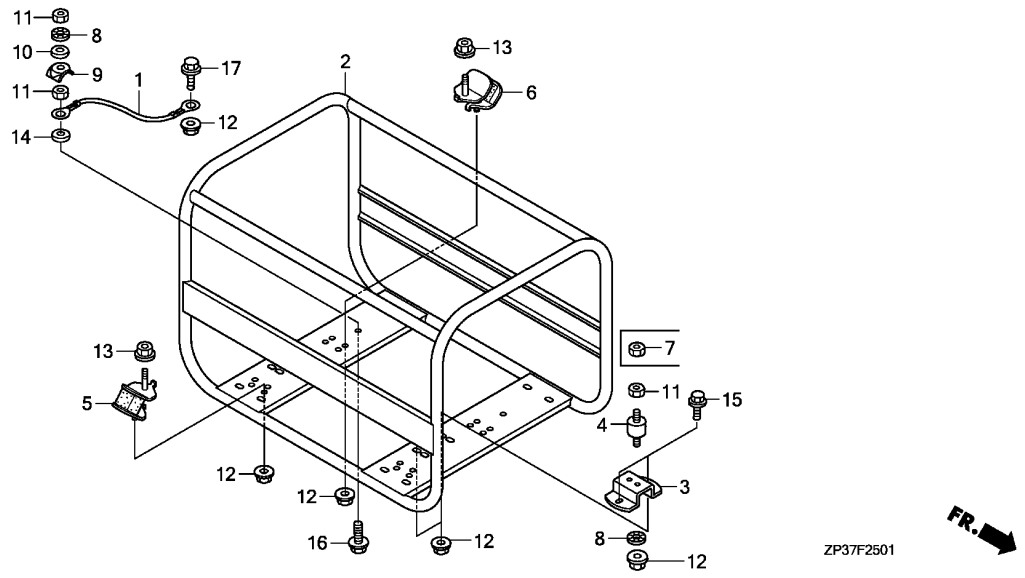
3

Ref. No.	Part No.	Description	Reqd. QTY				Serial No.	Parts catalogue code
			EC 3600	EC 3600 K1	EC 4000 K1	EC 4000 K2		
1	32601-ZD5-M40	CABLE, EARTH .....	-	-	1	1		
2	50310-ZP3-G91	FRAME COMP. ....	-	-	1	-		
	50310-ZP3-690	.....	-	-	-	1		
3	50329-ZP4-G90	STAY, GENERATOR .....	-	-	1	1		
4	68311-ZP3-000	RUBBER, ENGINE MOUNTING .....	-	-	2	2		
5	68321-ZD5-000	RUBBER, GENERATOR MOUNTING ..	-	-	1	1		
6	90501-ZD5-003	WASHER, FLANGE .....	-	-	4	4		
7	90501-898-000	WASHER, FRAME JOINT .....	-	-	1	1		
8	90503-ZP3-000	WASHER, PLAIN, 8MM .....	-	-	1	1		
9	94001-08000-0S	NUT, HEX., 8MM .....	-	-	3	3		
10	94050-08000	NUT, FLANGE, 8MM .....	-	-	8	8		
11	94101-08800	WASHER, PLAIN, 8MM .....	-	-	1	1		
12	95701-08016-00	BOLT, FLANGE, 8X16 .....	-	-	2	2		
13	95701-08025-00	BOLT, FLANGE, 8X25 .....	-	-	1	1		
14	95701-08035-00	BOLT, FLANGE, 8X35 .....	-	-	1	1		
15	90303-ZD5-003	NUT, SETTING .....	-	-	-	1		

# F-25-1

# FRAME(EC3600/K1)

**F 6**

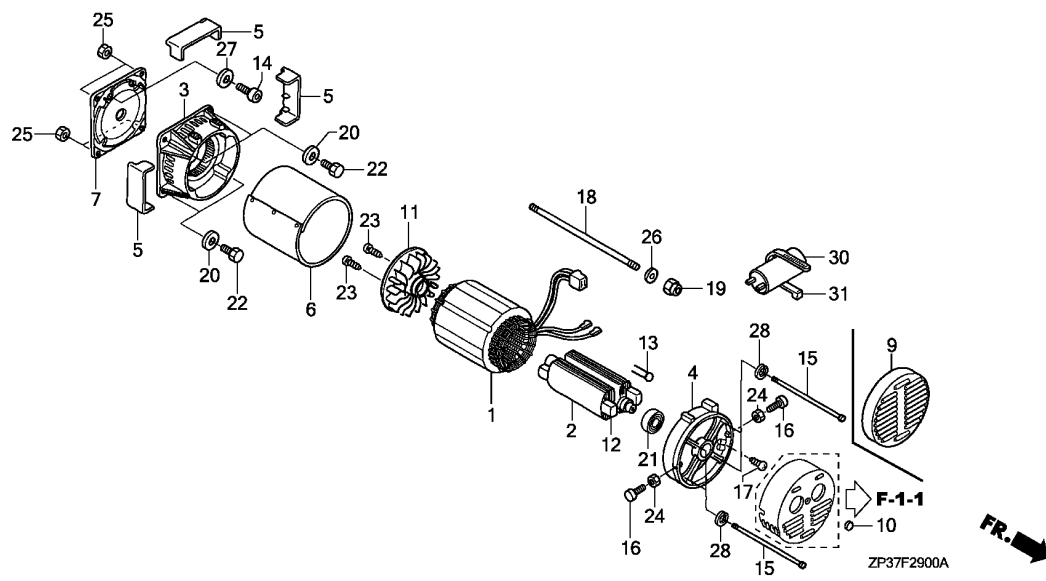


Ref. No.	L.O.N.	(Relative ref. Number) Description	F.R.T.
1	6111A4	CABLE, EARTH .....	0.1
2	4101H6	FRAME, MAIN .....	0.5
		.INCLUDES: Engine removal and installation	
4	4101DC	RUBBER, GENERATOR MOUNTING ...	0.3
5	4101V4	RUBBER, BOTTOM :RIGHT REAR ...	0.4
		.INCLUDES: Engine removal and installation	
		.NOTE: Same time for two units	
6	4101V3	RUBBER, BOTTOM :LEFT REAR ....	0.4
		.INCLUDES: Engine removal and installation	
		.NOTE: Same time for two units	

Ref. No.	Part No.	Description	Reqd. QTY				Serial No.	Parts catalogue code
			EC 3600	EC 3600 K1	EC 4000 K1	EC 4000 K2		
1	32601-ZD5-M40	CABLE, EARTH .....	1	1	-	-		
2	50310-ZP3-691	FRAME COMP. ....	1	1	-	-		
3	50329-ZP3-690	STAY, GENERATOR .....	1	1	-	-		
4	68321-ZD5-000	RUBBER, GENERATOR MOUNTING ..	1	1	-	-		
5	68325-ZC2-000	RUBBER, BOTTOM .....	1	1	-	-		
6	68325-899-000	RUBBER, BOTTOM .....	1	1	-	-		
7	90303-ZD5-003	NUT, SETTING .....	1	1	-	-		
8	90501-ZD5-003	WASHER, FLANGE .....	2	2	-	-		
9	90501-898-000	WASHER, FRAME JOINT .....	1	1	-	-		
10	90503-ZP3-000	WASHER, PLAIN, 8MM .....	1	1	-	-		
11	94001-08000-0S	NUT, HEX., 8MM .....	3	3	-	-		
12	94050-08000	NUT, FLANGE, 8MM .....	6	6	-	-		
13	94050-10000	NUT, FLANGE, 10MM .....	2	2	-	-		
14	94101-08800	WASHER, PLAIN, 8MM .....	1	1	-	-		
15	95701-08016-00	BOLT, FLANGE, 8X16 .....	2	2	-	-		
16	95701-08025-00	BOLT, FLANGE, 8X25 .....	1	1	-	-		
17	95701-08035-00	BOLT, FLANGE, 8X35 .....	1	1	-	-		

**3**

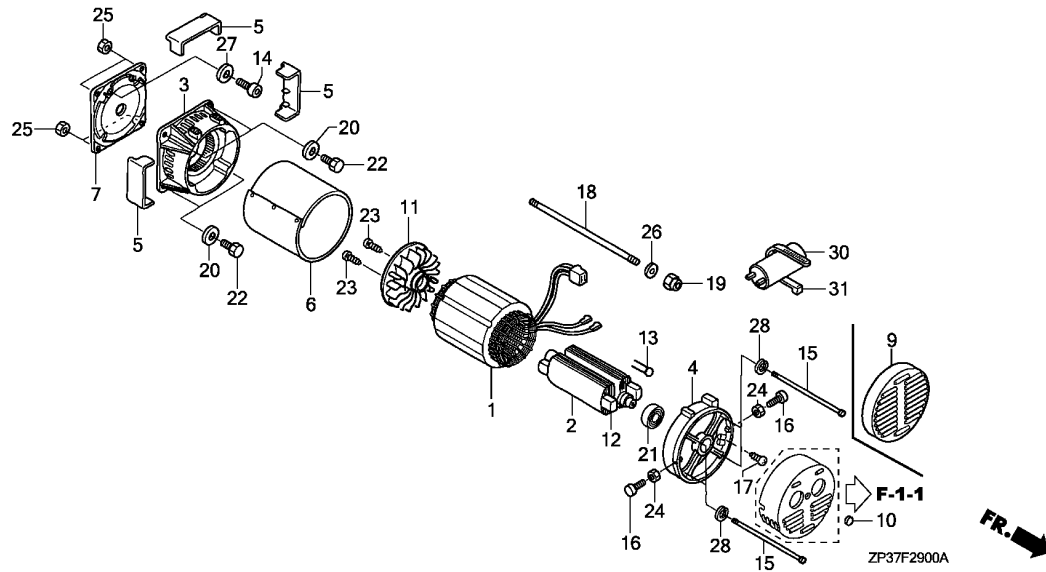




Ref. No.	L.O.N.	(Relative ref. Number) Description	F.R.T.
1	6201B9	STATOR, GENERATOR .....	0.6
2	6201A9	ROTOR, GENERATOR .....	1.3
3	6201B5	HOUSING, GENERATOR :FRONT .....	1.0
4	6201B6	HOUSING, GENERATOR :REAR .....	0.4
9	6201C7	COVER, GENERATOR END .....	0.1
11	6201B7	FAN, GENERATOR COOLING .....	1.0
21	6201A7	BEARING, GENERATOR ROTOR .....	1.0
30	6221J9	CONDENSER, CONTROL BOX .....	0.2

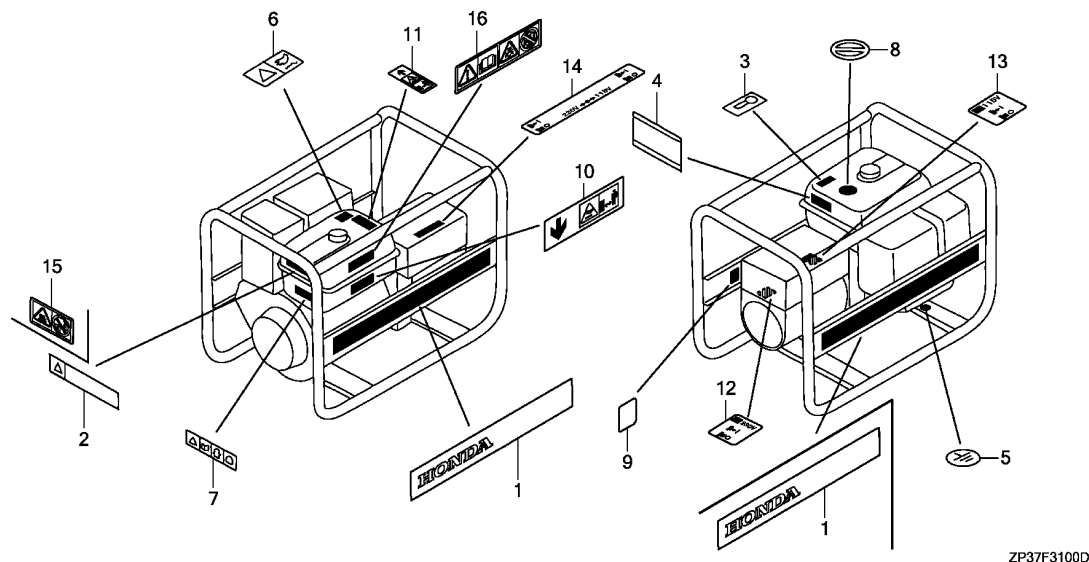
3

Ref. No.	Part No.	Description	Reqd. QTY				Serial No.	Parts catalogue code
			EC 3600	EC 3600 K1	EC 4000 K1	EC 4000 K2		
1	31120-ZP3-023	STATOR COMP. ....	1	1	-	-		
	31120-ZP3-013	.....	-	1	1			
2	31130-ZP3-023	ROTOR COMP. ....	1	1	-	-		
	31130-ZP3-013	.....	-	-	1	1		
3	31161-ZD5-013	HOUSING, FR. ....	1	1	-	-		
	31161-ZD5-003	.....	-	-	1	1		
4	31171-ZD5-003	HOUSING, RR. ....	1	1	1	1		
5	31173-ZD5-H41	COVER A, FR. HOUSING .....	-	-	3	3		
6	31181-ZP3-003	CASING, MIDDLE .....	1	1	1	1		
7	31185-ZP3-023	FLANGE COUPLING .....	1	1	-	-		
	31185-ZP3-013	.....	-	-	1	1		
9	31186-ZP3-G92	COVER, GENERATOR END .....	1	1	1	1	----- B,BT	
10	31189-ZD5-003	CAP, COVER END .....	1	1	1	1	----- B,BT,F,FT,GV,GVT,GVWT	
11	31191-ZD5-013	FAN, COOLING .....	1	1	-	-		
	31191-ZD5-003	.....	-	-	1	1		
12	32385-ZP3-004	DIODE(D2/125) .....	2	2	-	2	----- BT,FT,GVT,GVWT	
	32385-ZP3-013	.....	2	2	-	2	----- ITT	
		.....	-	-	2			
13	32386-ZP3-003	VARISTOR .....	2	2	2	2		
14	90102-ZP3-000	BOLT, SOCKET, 3/8-16UNCX25 ..	4	4	4	4		
15	90104-ZP3-003	STUD, COUPLING .....	4	4	4	4		
16	90108-ZD5-003	BOLT, END COVER .....	2	2	2	2		
17	90110-ZD5-003	SCREW, EARTH .....	1	1	1	1		
18	90119-ZP3-003	STUD, COUPLING .....	1	1	1	1		
19	90301-ZP4-003	NUT, SELF-LOCK, 8MM .....	1	1	1	1		
20	94111-08800	WASHER, SPRING, 8MM .....	4	4	-	-		



Ref. No.	Part No.	Description	Reqd. QTY				Serial No.	Parts catalogue code
			EC 3600	EC 3600 K1	EC 4000 K1	EC 4000 K2		
20)	90501-ZD5-003	WASHER, FLANGE .....	-	-	4	4		
21	91051-ZD5-003	BEARING, 6203 .....	1	1	1	1		
22	92201-08016-0A	BOLT, HEX., 8X16 .....	4	4	4	4		
23	90101-ZP3-G94	SCREW, SPECIAL, 4X20 .....	2	2	-	-		
	93901-44410	SCREW, TAPPING, 4X16 .....	-	-	2	2		
24	94001-05000-0S	NUT, HEX., 5MM .....	2	2	2	2		
25	94001-08000-0S	NUT, HEX., 8MM .....	4	4	4	4		
26	94101-08800	WASHER, PLAIN, 8MM .....	1	1	1	1		
27	94102-10800	WASHER, PLAIN, 10MM .....	4	4	4	4		
28	94111-06800	WASHER, SPRING, 6MM .....	4	4	4	4		
30	32382-ZP3-023	CONDENSER .....	1	1	-	-	-----	FT,GVT,GVWT,ITT
	32382-ZP3-013	.....	-	-	1	1	-----	F,FT,GV,GVT,GVWT,ITT
31	32901-ZD5-003	TIE, CABLE .....	1	1	1	1	-----	F,FT,GV,GVT,GVWT,ITT



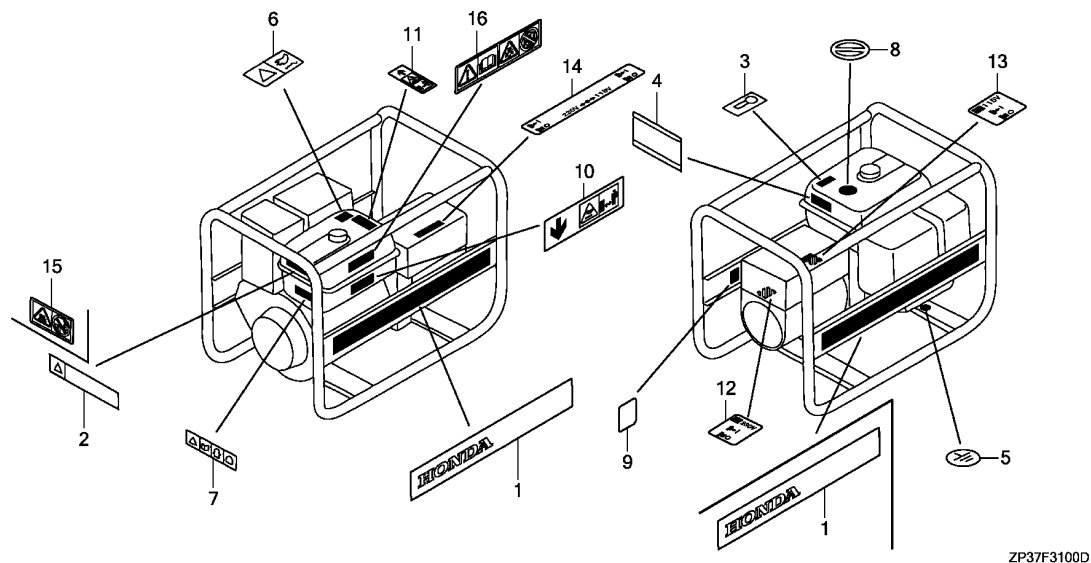


ZP37F3100D

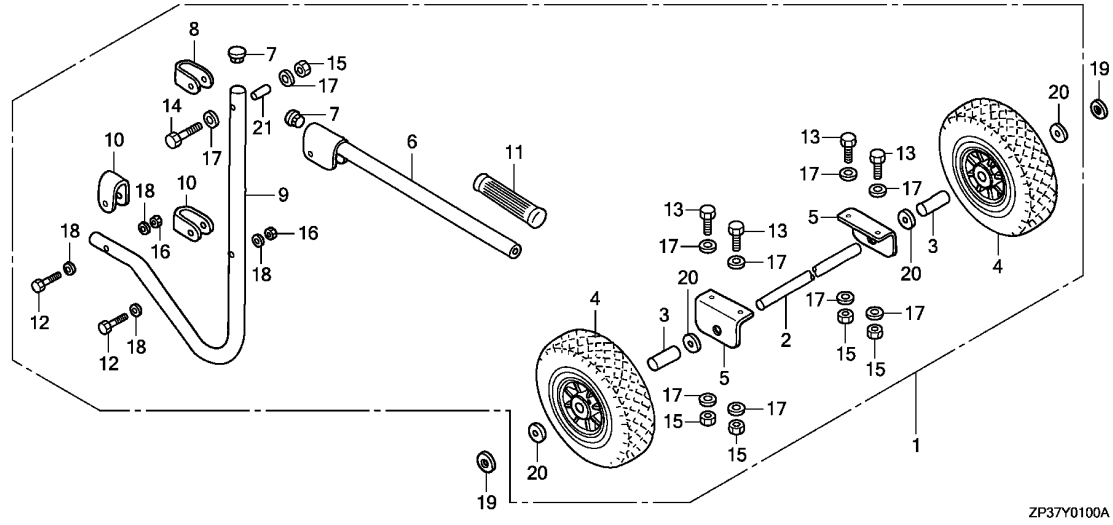
Ref. L.O.N. (Relative ref. Number) F.R.T.  
No. Description

NO INFORMATION .....

Ref. No.	Part No.	Description	Reqd. QTY				Serial No.	Parts catalogue code
			EC 3600	EC 3600 K1	EC 4000 K1	EC 4000 K2		
1	87101-ZP3-A90	MARK, EMBLEM(EC3600)	2	-	-	-		
	87101-ZP3-E60	.....	-	2	-	-		
	87101-ZP3-010	MARK, EMBLEM(EC4000)	-	-	1	-		
	87101-ZP3-690	.....	-	-	-	2		
2	87106-ZD5-000	MARK, FUEL CAUTION	1	-	1	1		
3	87135-ZE2-020	LABEL, E-SPEC(15.5X27.5)	-	-	1	-		
4	87152-ZP3-A91	LABEL, SPECIFICATION(B)						
		(EC3600)	1	-	-	-	-----	BT
	87152-ZP3-A51	LABEL, SPECIFICATION(EC3600)	1	-	-	-	-----	FT,GVT,GVWT,ITT
	87152-ZP3-E91	LABEL, SPECIFICATION	-	1	-	-	-----	BT
	87152-ZP3-E61	.....	-	1	-	-	-----	FT,GVT,GVWT,ITT
	87152-ZP3-J90	LABEL, SPECIFICATION(EC4000K1)	-	-	1	-	-----	B,BT
	87152-ZP3-K40	.....	-	-	1	-	-----	F,FT,GV,GVT
	87152-ZP3-691	LABEL, SPECIFICATION(B)						
		(EC4000K2)	-	-	-	1	-----	BT
	87152-ZP3-751	LABEL, SPECIFICATION(EC4000K2)	-	-	-	1	-----	FT,GVT,GVWT,ITT
5	87534-892-640	MARK, EARTH	1	1	1	1		
6	87539-ZD5-000	MARK, EX. CAUTION	-	-	1	1		
7	87561-ZD5-691	MARK, CAUTION(CO)	1	-	-	-		
	87561-ZD5-000	.....	-	-	1	1		
8	87563-ZD5-000	MARK, CONNECT CAUTION	1	1	1	1		
9	87709-Z07-S50	MARK, RECYCLE	1	1	-	1	-----	GVWT
10	87539-Z22-A60	MARK, EX. CAUTION	1	1	-	-		
11	87540-ZD5-690	MARK, HOT CAUTION	1	-	-	-		
	87539-ZT4-690	MARK, HOT CAUTION(B)	-	1	-	-		
12	87580-ZP3-A40	MARK, CIRCUIT BREAKER(230V)	1	1	-	-	-----	FT,GVT,GVWT,ITT
13	87580-ZP3-A90	MARK, CIRCUIT BREAKER(115V)	1	1	-	-	-----	BT



Ref. No.	Part No.	Description	Reqd. QTY				Serial No.	Parts catalogue code
			EC 3600	EC 3600 K1	EC 4000 K1	EC 4000 K2		
14	87580-ZT4-690	MARK, CIRCUIT BREAKER (230V/115V)	1	1	-	-	----- BT	
15	87106-ZD5-010	MARK, FUEL CAUTION .....	1	1	1	1	----- BT,FT,GVT,GVWT,ITT	
16	87561-ZD5-692	MARK, CAUTION(CO) .....	1	1	-	1		



Ref. No.	L.O.N.	(Relative ref. Number) Description	F.R.T.
1	7101B6	WHEEL KIT .....	0.6
2	2091E4	SHAFT, WHEEL .....	0.3
4	7101B4	WHEEL :LEFT .....	0.1
	7101B5	WHEEL :RIGHT .....	0.1
6	8101J5	PIPE, HANDLE .....	0.1
9	8101BK	STAND, TUBE :LEFT .....	0.2
	8101BL	STAND, TUBE :RIGHT .....	0.2
11	4131C3	GRIP, HANDLE .....	0.1

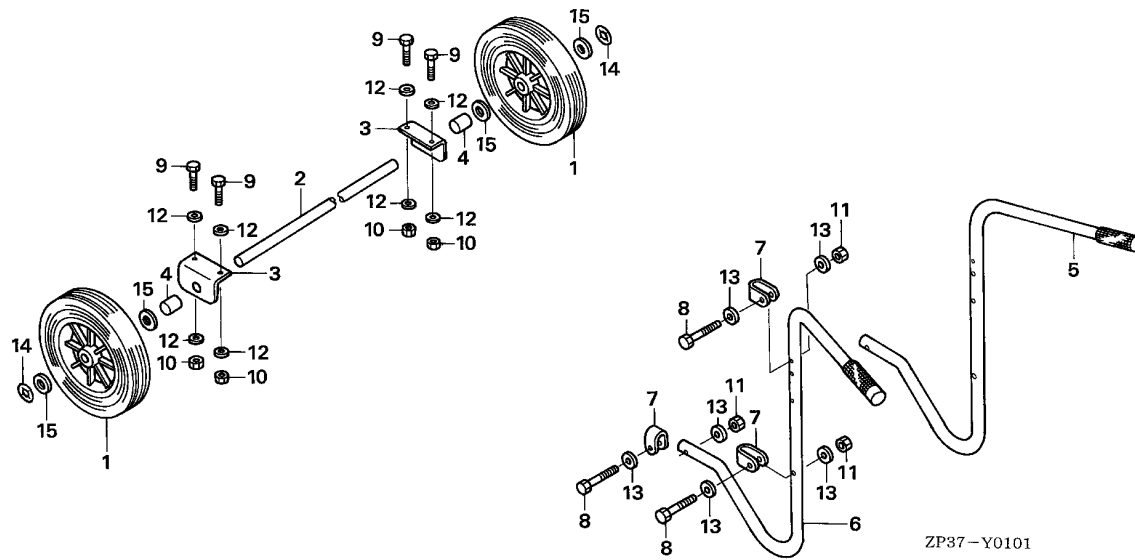
3

Ref. No.	Part No.	Description	Reqd. QTY				Serial No.	Parts catalogue code
			EC 3600	EC 3600 K1	EC 4000 K1	EC 4000 K2		
1	06427-ZS8-000	WHEEL KIT .....	(1)	-	(1)	(1)		
	06427-ZS8-010	.....	-	(1)	-	-		
2	42311-ZS8-000	SHAFT, WHEEL .....	(1)	(1)	(1)	(1)		
3	42312-ZS8-000	COLLAR, WHEEL SHAFT .....	(2)	(2)	(2)	(2)		
4	42700-ZS8-000	WHEEL ASSY.(260X85) .....	(2)	(2)	(2)	(2)		
5	42732-ZP3-000	HOLDER, SHAFT .....	(2)	(2)	(2)	(2)		
6	53111-ZS8-000	HANDLE .....	(2)	(2)	(2)	(2)		
7	53115-ZS8-000	CAP, HANDLE .....	(4)	(4)	(4)	(4)		
8	53131-ZS8-000	BRACKET, HANDLE .....	(2)	(2)	(2)	(2)		
9	53136-ZS8-000	STAND, TUBE .....	(2)	(2)	(2)	(2)		
10	53156-ZS8-000	BRACKET, STAND .....	(4)	(4)	(4)	(4)		
11	53165-ZS8-000	GRIP, HANDLE .....	(2)	(2)	(2)	(2)		
12	90108-ZP3-000	BOLT, HEX., 6X42 .....	(4)	(4)	(4)	(4)		
13	90109-ZP3-000	BOLT, HEX., 8X23 .....	(4)	(4)	(4)	(4)		
14	90109-ZS8-000	BOLT, HEX., 8X50 .....	(2)	(2)	(2)	(2)		
15	90303-ZP3-000	NUT, SELF-LOCK, 8MM .....	(6)	(6)	(6)	(6)		
16	90306-ZP3-000	NUT, SELF-LOCK, 6MM .....	(4)	(4)	(4)	(4)		
17	90503-ZP3-000	WASHER, PLAIN, 8MM .....	(12)	(12)	(12)	(12)		
18	90506-ZP3-000	WASHER, PLAIN, 6MM .....	(8)	(8)	(8)	(8)		
19	90507-ZP3-000	WASHER, LOCK, 20MM .....	(2)	(2)	(2)	(2)		
20	90508-ZP3-000	WASHER, PLAIN, 22MM .....	(4)	(4)	(4)	(4)		
21	91551-ZS8-000	COLLAR, HANDLE .....	(2)	(2)	(2)	(2)		

# FOP-1-1

# HANDLE/WHEEL

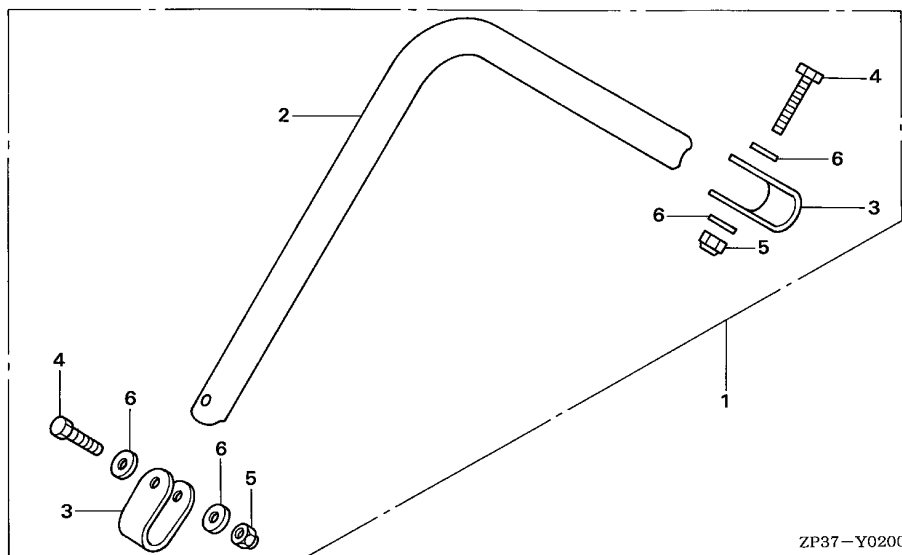
F12



Ref. No.	L.O.N.	(Relative ref. Number) Description	F.R.T.
1	7101B4	WHEEL :LEFT .....	0.1
	7101B5	WHEEL :RIGHT .....	0.1
2	2091E4	SHAFT, WHEEL .....	0.3
5	8101J2	PIPE, HANDLE :RIGHT .....	0.2
6	8101H9	PIPE, HANDLE :LEFT .....	0.2

Ref. No.	Part No.	Description	Reqd. QTY				Serial No.	Parts catalogue code
			EC 3600	EC 3600 K1	EC 4000 K1	EC 4000 K2		
1	42710-ZP3-000	WHEEL COMP.(250X60) .....	(2)	(2)	(2)	(2)		
2	42730-ZP3-000	SHAFT, WHEEL .....	(1)	(1)	(1)	(1)		
3	42732-ZP3-000	HOLDER, SHAFT .....	(2)	(2)	(2)	(2)		
4	42733-ZP3-000	COLLAR, WHEEL SHAFT .....	(2)	(2)	(2)	(2)		
5	53110-ZP3-000	HANDLE COMP., R. ....	(1)	(1)	(1)	(1)		
6	53120-ZP3-000	HANDLE COMP., L. ....	(1)	(1)	(1)	(1)		
7	53155-ZP3-000	CLAMP, HANGER .....	(6)	(6)	(6)	(6)		
8	90108-ZP3-000	BOLT, HEX., 6X42 .....	(6)	(6)	(6)	(6)		
9	90109-ZP3-000	BOLT, HEX., 8X23 .....	(4)	(4)	(4)	(4)		
10	90303-ZP3-000	NUT, SELF-LOCK, 8MM .....	(4)	(4)	(4)	(4)		
11	90306-ZP3-000	NUT, SELF-LOCK, 6MM .....	(6)	(6)	(6)	(6)		
12	90503-ZP3-000	WASHER, PLAIN, 8MM .....	(8)	(8)	(8)	(8)		
13	90506-ZP3-000	WASHER, PLAIN, 6MM .....	(12)	(12)	(12)	(12)		
14	90507-ZP3-000	WASHER, LOCK, 20MM .....	(2)	(2)	(2)	(2)		
15	90508-ZP3-000	WASHER, PLAIN, 22MM .....	(4)	(4)	(4)	(4)		

3

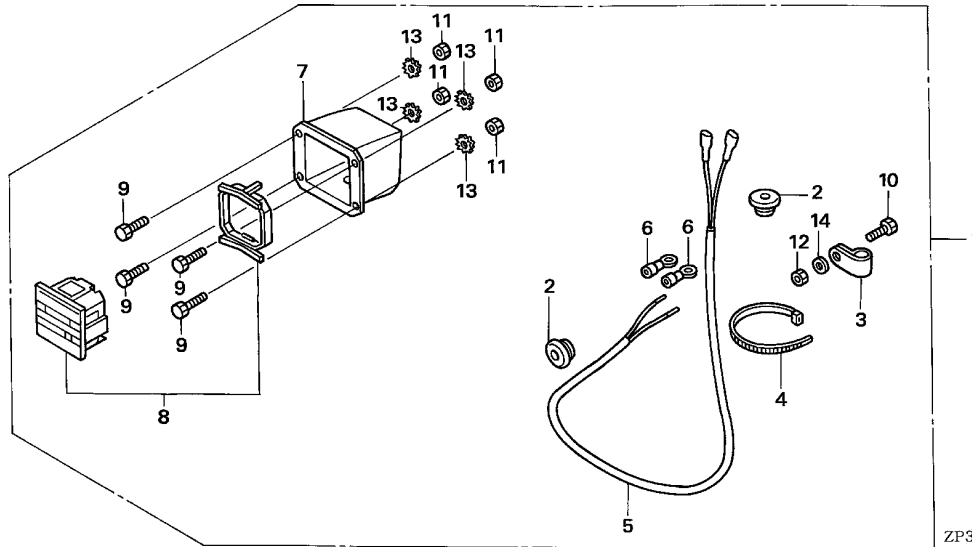


ZP37-Y0200

Ref. No.	L.O.N.	(Relative ref. Number) Description	F.R.T.
1	4101U9	HANGER KIT .....	0.1
2	4101CH	HANGER, GENERATOR .....	0.1

3

Ref. No.	Part No.	Description	Reqd. QTY				Serial No.	Parts catalogue code
			EC 3600	EC 3600 K1	EC 4000 K1	EC 4000 K2		
1	06810-ZP3-000	HANGER KIT .....	(1)	(1)	(1)	(1)		
2	53150-ZP3-000	HANGER .....	(1)	(1)	(1)	(1)		
3	53155-ZP3-000	CLAMP, HANGER .....	(2)	(2)	(2)	(2)		
4	90105-ZP3-000	BOLT, HEX., 8X45 .....	(2)	(2)	(2)	(2)		
5	90303-ZP3-000	NUT, SELF-LOCK, 8MM .....	(2)	(2)	(2)	(2)		
6	90503-ZP3-000	WASHER, PLAIN, 8MM .....	(4)	(4)	(4)	(4)		



ZP37-Y0300

Ref. No.	L.O.N.	(Relative ref. Number) Description	F.R.T.
----------	--------	------------------------------------	--------

NO INFORMATION .....

Ref. No.	Part No.	Description	Reqd. QTY				Serial No.	Parts catalogue code
			EC 3600	EC 3600	EC 4000	EC 4000		
1	06820-ZP3-000	METER KIT, HOUR .....	(1)	(1)	(1)	(1)		
2	31484-ZP3-000	GROMMET, CORD .....	(2)	(2)	(2)	(2)		
3	31486-ZP3-000	HOLDER, CORD .....	(1)	(1)	(1)	(1)		
4	31487-ZP3-000	BAND, CORD .....	(1)	(1)	(1)	(1)		
5	31690-ZP3-000	CORD, HOUR METER CONNECTING .....	(1)	(1)	(1)	(1)		
6	32151-ZP4-000	TERMINAL, INSULATED, 5MM .....	(2)	(2)	(2)	(2)		
7	37454-ZP3-000	COVER, HOUR METER .....	(1)	(1)	(1)	(1)		
8	37455-ZP3-000	METER ASSY., HOUR .....	(1)	(1)	(1)	(1)		
9	90106-ZP3-000	BOLT, HEX., 4X12 .....	(4)	(4)	(4)	(4)		
10	90107-ZP3-000	BOLT, HEX., 6X16 .....	(1)	(1)	(1)	(1)		
11	90304-ZP3-000	NUT, HEX., 4MM .....	(4)	(4)	(4)	(4)		
12	90305-ZP3-000	NUT, HEX., 6MM .....	(1)	(1)	(1)	(1)		
13	90505-ZP3-000	WASHER, STOPPER, 4MM .....	(4)	(4)	(4)	(4)		
14	90506-ZP3-000	WASHER, PLAIN, 6MM .....	(1)	(1)	(1)	(1)		







# PART NO. INDEX

G 2

Part Number	Address	Page	Ref.	Part Number	Address	Page	Ref.	Part Number	Address	Page	Ref.	Part Number	Address	Page	Ref.				
<b>32000</b>				<b>38000</b>				<b>87101-ZP3-E60</b>				<b>91017-ZP3-000</b>				<b>91201-Z1D-003</b>			
32110-Z5K-000	E3	37	9	38220-ZP3-003	F1	40	10	87106-ZD5-000	F9	48	1	91018-ZD5-003	F14	53	10	91353-671-004	D2	20	9
32151-ZP4-000	F14	53	6		F3	42	5	87106-ZD5-010	F10	49	15	91018-ZP3-000	F7	46	16	D3	21	13	
32331-ZD5-G91	F1	40	2	38220-ZP3-821	F1	40	9	87135-ZE2-020	F9	48	3		F11	50	12	D2	20	9	
	F3	42	10		F1	40	9	87152-ZP3-691	F9	48	4	91019-ZP3-000	F12	51	8	D16	34	6	
32331-ZD5-H41	F3	42	2		F2	41	20	87152-ZP3-751	F9	48	4		F11	50	13	F11	50	21	
32331-ZD5-H51	F3	42	2		F3	42	5	87152-ZP3-A51	F9	48	4	91019-ZS8-000	F12	51	9				
32331-ZD5-V91	F1	40	3	38220-ZP3-G91	F1	40	9	87152-ZP3-A91	F9	48	4	910110-ZD5-003	F11	50	14				
32331-ZD5-V92	F1	40	3		F1	40	9	87152-ZP3-E61	F9	48	4	910119-ZP3-003	F7	46	17	92201-08016-0A	F8	47	22
32331-ZP3-033	F3	42	2	38229-ZD5-003	F1	40	11	87152-ZP3-E91	F9	48	4	90131-883-000	F7	46	18	92900-08032-0E	D1	19	11
32331-ZP3-741	F3	42	2		F3	42	6	87152-ZP3-J90	F9	48	4	90201-ZE3-790	D2	20	6				
32331-ZP3-821	F3	42	2	<b>42000</b>				87152-ZP3-K40	F9	48	4	90201-ZE3-V00	E2	36	4				
32331-ZP3-G92	F1	40	2					87521-Z5K-000	F9	48	4	90202-ZE3-V00	E2	36	4	<b>93000</b>			
	F3	42	10	42311-ZS8-000	F11	50	2	87521-ZH9-030	E5	39	1	90202-ZE3-V00	D14	32	14	93500-03006-1H	D13	31	24
32331-ZP3-H54	F3	42	2	42312-ZS8-000	F11	50	3	87521-ZH9-040	E5	39	1	90206-ZE1-000	D9	27	17	93500-04010	F1	40	13
32332-ZD5-V91	F1	40	3	42700-ZS8-000	F11	50	4	87528-Z5T-000	E5	39	2	90301-ZP4-003	F7	46	19	93500-05035-0A	F4	38	9
32351-ZP3-003	F1	40	4	42710-ZP3-000	F12	51	1	87528-ZE2-810	E5	39	2	90302-KF9-900	F4	43	10	93891-05012-00	F4	43	11
32356-ZP3-003	F1	40	5	42730-ZP3-000	F12	51	2	87534-892-640	F9	48	5	90303-ZD5-003	F5	44	15	93891-06020-07	F4	43	12
32356-ZP3-013	F1	40	5	42732-ZP3-000	F11	50	5	87539-Z22-A60	F9	48	10		F6	45	7	93901-14210	F2	41	21
32382-ZP3-013	F1	40	6		F12	51	3	87539-ZD5-000	F9	48	6	90303-ZP3-000	F11	50	15		F3	42	7
	F8	47	30	42733-ZP3-000	F12	51	4	87539-ZT4-690	F9	48	11		F12	51	10	93901-24310	F3	42	7
32382-ZP3-023	F1	40	6					87540-ZD5-690	F9	48	11	90304-ZP3-000	F13	52	5	93901-44310	F1	40	14
	F8	47	30	<b>50000</b>				87561-ZD5-000	F9	48	7	90305-ZP3-000	F14	53	12		F2	41	21
32385-ZP3-004	F7	46	12	50310-ZP3-690	F5	44	2	87561-ZD5-691	F9	48	7	90306-ZP3-000	F11	50	16		F3	42	7
32385-ZP3-013	F7	46	12	50310-ZP3-691	F6	45	2	87561-ZD5-692	F10	49	16		F12	51	11				
32386-ZP3-003	F7	46	13	50310-ZP3-691	F5	44	2	87563-ZD5-000	F9	48	8	90325-044-000	D14	32	11	93901-44410	F8	47	23
32601-ZD5-M40	F5	44	1	50329-ZP3-690	F6	45	3	87580-ZP3-A40	F9	48	12	90413-ZK6-880	D9	27	18	<b>94000</b>			
	F6	45	1	50329-ZP3-690	F6	45	3	87580-ZP3-A90	F9	48	13	90441-ZE2-010	D1	19	10				
32901-ZD5-003	F1	40	7	50329-ZP4-690	F5	44	3	87580-ZT4-690	F10	49	14	90446-KE1-000	D2	20	7				
	F8	47	31					87709-Z07-S50	F9	48	9	90501-898-000	F5	44	7	94001-04000-0S	F1	40	15
<b>34000</b>				<b>53000</b>				<b>90000</b>				<b>90501-ZD5-003</b>				<b>90503-ZP3-000</b>			
34150-ZH7-003	D2	20	4	53110-ZP3-000	F12	51	5	90001-ZE8-000	D7	25	5		F6	45	9	94001-05000-0S	F1	40	16
34150-ZH7-013	D2	20	4	53111-ZS8-000	F11	50	6	90004-Z5T-000	D11	29	8	90501-ZD5-003	F6	45	8	F8	47	24	
				53115-ZS8-000	F11	50	7	90004-ZE2-W01	D10	28	11		F8	47	20	94001-08000-0S	F5	44	9
				53120-ZP3-000	F12	51	6	90006-Z5T-000	F4	43	17	90503-ZP3-000	F11	50	17	F6	45	11	
				53131-ZS8-000	F11	50	8	90006-ZE2-000	D15	33	7		F12	51	12	94050-06000	D14	32	12
				53136-ZS8-000	F11	50	9	90008-ZE2-003	D10	28	12		F13	52	6	94050-08000	D15	33	9
35120-Z0T-851	D11	29	6	53150-ZP3-000	F13	52	2	90009-Z1C-000	D14	32	10	90505-ZP3-000	F14	53	13		D16	34	7
35120-Z5T-003	D11	29	7	53155-ZP3-000	F12	51	7	90009-ZE2-003	D14	32	10	90506-ZP3-000	F11	50	18		F5	44	10
35320-ZD5-G91	F1	40	8		F13	52	3	90012-ZE0-010	D8	26	16		F12	51	13	94050-10000	D2	20	10
35320-ZP3-A90	F1	40	8	53156-ZS8-000	F11	50	10	90013-883-000	D2	20	5		F14	53	14		F6	45	12
35480-ZF6-003	D2	20	2	53165-ZS8-000	F11	50	11		D11	29	5	90507-ZP3-000	F11	50	19		F6	45	13
								90014-Z5T-000	D1	19	8		F12	51	14	94101-05800	F1	40	17
				<b>68000</b>				90014-ZE2-000	D1	19	8	90508-ZP3-000	F11	50	20	94101-06800	D3	21	14
36100-ZF6-P81	D11	29	4	68311-ZP3-000	F5	44	4	90015-883-000	E3	37	6		F12	51	15	94101-08800	F5	44	11
36100-ZF6-P82	D11	29	4	68321-ZD5-000	F5	44	5	90015-Z5T-000	E4	38	8	90551-ZE1-000	D7	25	6		F6	45	14
36100-ZH7-003	D11	29	4		F6	45	4	90015-ZE5-010	E4	38	8	90602-ZE1-000	D3	21	11		F8	47	26
36101-ZE1-010	E3	37	5	68325-899-000	F6	45	6	90042-ZE2-000	D1	19	9	90684-ZA0-601	E3	37	7	94102-10800	F8	47	27
				68325-ZC2-000	F6	45	5	90050-ZE1-000	D15	33	8	90701-HC4-000	D3	21	12	94103-05700	F4	43	13
				68331-ZP3-003	F1	40	12		F4	43	8	90741-ZE2-000	E2	36	5	94109-12000	D2	20	11
								90050-ZH8-W40	F4	43	9					94111-04800	F2	41	18
				<b>87000</b>				90101-ZP3-G94	F8	47	23	<b>91000</b>							
37454-ZP3-000	F14	53	7	87101-ZP3-010	F9	48	1	90102-ZP3-000	F7	46	14	91001-ZH9-003	D4	22	2	94111-05000	F4	43	14
37455-ZP3-000	F14	53	8	87101-ZP3-690	F9	48	1	90104-ZP3-003	F7	46	15	91051-ZD5-003	F8	47	21	94111-05800	F2	41	19
				87101-ZP3-A90	F9	48	1	90105-ZP3-000	F13	52	4	91201-890-003	D2	20	8	94111-06800	F8	47	28
								90106-ZP3-000	F14	53	9		D3	21	13	94111-08800	F7	46	20
																94251-10000	D2	20	12



# PART NO. INDEX

**G 3**

Part Number	Address	Page	Ref.	Part Number	Address	Page	Ref.	Part Number	Address	Page	Ref.	Part Number	Address	Page	Ref.
94301-12200	D1	19	12												
94305-20122	D13	31	25												
95000															
95001-45210-40	D16	34	8												
95001-45222-40	D16	34	8												
95002-02080	D16	34	9												
95005-11100-30	D1	19	13												
95701-06010-00	E1	35	14												
95701-06012-00	D2	20	13												
95701-08016-00	F5	44	12												
	F6	45	15												
95701-08025-00	D16	34	10												
	F5	44	13												
	F6	45	16												
95701-08035-00	D3	21	15												
	F5	44	14												
	F6	45	17												
95701-10080-00	D1	19	14												
95725-10080-00	D1	19	14												
96000															
96100-62060-00	D3	21	16												
98000															
98079-55846	D1	19	15												
98079-55855	D1	19	15												
98079-55876	D1	19	15												
98079-56846	D1	19	15												
98079-56855	D1	19	15												
98079-56876	D1	19	15												
99000															
99101-ZH8-0800	D13	31	26												
99101-ZH8-0820	D13	31	26												
99101-ZH8-0850	D13	31	26												
99101-ZH8-0880	D13	31	26												
99204-ZE2-0380	D13	31	27												
99204-ZE2-0400	D13	31	27												

4



# PART NAME INDEX

Part name	Address	Page	Ref.	Part name	Address	Page	Ref.	Part name	Address	Page	Ref.
HOLDER, SHAFT .....	F12	51	3	NUT, FLANGE, 10MM .....	F6	45	13	PLUG, SPARK .....	D1	19	15
HOUSING, FR. ....	F7	46	3	NUT, FLANGE, 6MM .....	D14	32	12	PROTECTOR COMP., MUFFLER .....	D15	33	2
HOUSING, RR. ....	F7	46	4		E4	38	10				10
[ I ]				NUT, FLANGE, 8MM .....	D15	33	9	PULLEY COMP., STARTER .....	E2	36	2
INSULATOR, CARBURETOR .....	D12	30	14		D16	34	7	PULLEY, RECOIL STARTER .....	D10	28	3
[ J ]					F5	44	10	[ R ]			
JET SET, PILOT, #38 .....	D13	31	27	NUT, HEX., 4MM .....	F1	40	15	RATCHET, STARTER .....	D10	28	4
JET SET, PILOT, #40 .....	D13	31	27		F2	41	22	RECEPTACLE .....	F1	40	2
JET, MAIN, #80 .....	D13	31	26		F14	53	11		F3	42	2
JET, MAIN, #82 .....	D13	31	26	NUT, HEX., 5MM .....	F1	40	16				10
JET, MAIN, #85 .....	D13	31	26		F4	43	10	RETAINER, EX. VALVE SPRING .....	D8	26	12
JET, MAIN, #88 .....	D13	31	26	NUT, HEX., 6MM .....	F14	53	12	RETAINER, IN. VALVE SPRING .....	D8	26	11
JOINT, FUEL TANK .....	D16	34	2		F5	44	9				12
[ K ]				NUT, HEX., 8MM .....	F6	45	11	RETAINER, SPRING .....	D10	28	8
KEY, SPECIAL WOODRUFF, 25X18 ..	E2	36	5	NUT, PIVOT ADJUSTING .....	D9	27	17	RING SET, PISTON .....	D5	23	1
[ L ]				NUT, SELF-LOCK, 6MM .....	F11	50	16		D6	24	1
LABEL, E-SPEC .....	F9	48	3		F12	51	11	ROD ASSY., CONNECTING .....	D7	25	4
LABEL, SPECIFICATION .....	F9	48	4	NUT, SELF-LOCK, 8MM .....	F7	46	19	ROD, GOVERNOR .....	E4	38	2
LEVER COMP., CHOKE .....	D13	31	18		F11	50	15	ROD, PUSH .....	D8	26	3
LEVER, COCK .....	D13	31	19		F12	51	10	ROPE, RECOIL STARTER .....	D10	28	10
LIFTER, VALVE .....	D8	26	5	NUT, SETTING .....	F13	52	5	ROTATOR, VALVE .....	D8	26	14
[ M ]					F5	44	15	ROTOR COMP. ....	F7	46	2
MARK, CAUTION .....	F9	48	7	NUT, SPECIAL, 16MM .....	E2	36	4	RUBBER A, TANK MOUNTING .....	E1	35	11
	F10	49	16	NUT, TANK MOUNTING .....	E1	35	12	RUBBER COMP., TANK MOUNTING ..	E1	35	13
MARK, CHOKE .....	E5	39	2	NUT, TOOL BOX SETTING .....	D14	32	11	RUBBER, BOTTOM .....	F6	45	5
MARK, CIRCUIT BREAKER .....	F9	48	12	[ O ]							6
	F10	49	14	OIL SEAL, 30X46X8 .....	D2	20	8	RUBBER, ENGINE MOUNTING .....	F5	44	4
MARK, CONNECT CAUTION .....	F9	48	8		D3	21	13	RUBBER, GENERATOR MOUNTING ..	F5	44	5
MARK, EARTH .....	F9	48	5	0-RING, 14MM .....	D2	20	9		F6	45	4
MARK, EMBLEM .....	F9	48	1		D16	34	6	RUBBER, SUPPORTER .....	D16	34	1
MARK, EX. CAUTION .....	F9	48	6	[ P ]				[ S ]			
MARK, FUEL CAUTION .....	F9	48	2	PACKING, AIR CLEANER CASE .....	D14	32	1	SCREW-WASHER, 5X12 .....	F4	43	11
	F10	49	15	PACKING, CARBURETOR .....	D12	30	16	SCREW-WASHER, 6X20 .....	F4	43	12
MARK, HOT CAUTION .....	F9	48	11	PACKING, CASE COVER .....	D3	21	2	SCREW SET .....	D12	30	7
MARK, RECYCLE .....	F9	48	9	PACKING, ELBOW .....	D14	32	1	SCREW SET, DRAIN .....	D12	30	6
METER ASSY., HOUR .....	F14	53	8	PACKING, FUEL COCK .....	D13	31	22	SCREW SET, PILOT .....	D12	30	5
METER KIT, HOUR .....	F14	53	1	PACKING, FUEL FILLER CAP .....	D16	34	5	SCREW, CENTER .....	D10	28	11
MOUNT, RUBBER CONTROL BOX .....	F1	40	12		E1	35	16	SCREW, EARTH .....	F7	46	17
MUFFLER COMP. ....	D15	33	1	PACKING, FUEL STRAINER CUP .....	D12	30	13	SCREW, PAN, 3X6 .....	D13	31	24
[ N ]				PACKING, HEAD COVER .....	D1	19	7	SCREW, PAN, 4X10 .....	F1	40	13
NOSE, SILENCER .....	D14	32	6	PACKING, INSULATOR .....	D12	30	17	SCREW, PAN, 5X35 .....	E4	38	9
				PACKING, OIL FILLER CAP .....	D3	21	5	SCREW, SPECIAL, 4X20 .....	F8	47	23
NOZZLE, MAIN .....	D12	30	11	PIN, GOVERNOR WEIGHT .....	D3	21	9	SCREW, TAPPING, 3X6 .....	D11	29	8
NUT, AIR CLEANER COVER .....	D14	32	14	PIN, LOCK, 10MM .....	D2	20	12	SCREW, TAPPING, 4X10 .....	F2	41	21
NUT, FLANGE, 10MM .....	D2	20	10	PIN, PISTON .....	D6	24	3		F3	42	7
				PIN, SPRING, 2X12 .....	D13	31	25	SCREW, TAPPING, 4X12 .....	F1	40	14
				PIPE, EX. ....	D15	33	3		F2	41	21
				PISTON .....	D6	24	2		F3	42	7
				PIVOT, ROCKER ARM .....	D8	26	6	SCREW, TAPPING, 4X16 .....	F8	47	23
				PLATE, LEVER SETTING .....	D13	31	20	SCREW, TAPPING, 5X25 .....	F4	43	9
				PLATE, SET .....	F4	43	6	SCREW, TAPPING, 5X8 .....	D15	33	8
									F4	43	8
								SCREW, TAPPING, 6X10 .....	D15	33	7

# PART NAME INDEX

H 3

Part name	Address	Page	Ref.	Part name	Address	Page	Ref.	Part name	Address	Page	Ref.
SCREW, TAPPING, 6X25 .....	F4	43	17	WASHER, FLANGE .....	F5	44	6				
SCREW, THROTTLE STOP .....	D12	30	10		F6	45	8				
SEAL, VALVE STEM .....	D8	26	1		F8	47	20				
SEAT, VALVE SPRING .....	D8	26	13	WASHER, FRAME JOINT .....	F5	44	7				
SHAFT, GOVERNOR ARM .....	D2	20	3		F6	45	9				
SHAFT, WHEEL .....	F11	50	2	WASHER, LOCK, 20MM .....	F11	50	19				
	F12	51	2		F12	51	14				
SHROUD .....	D11	29	3	WASHER, PLAIN, 10MM .....	F8	47	27				
SLIDER, GOVERNOR .....	D3	21	10	WASHER, PLAIN, 22MM .....	F11	50	20				
SPACER COMP., CARBURETOR .....	D12	30	15		F12	51	15				
SPACER, MUFFLER COVER .....	F4	43	7	WASHER, PLAIN, 5MM .....	F1	40	17				
SPRING, COCK LEVER .....	D13	31	21		F4	43	13				
SPRING, CONTROL ADJUSTING .....	E4	38	6	WASHER, PLAIN, 6MM .....	D3	21	14				
SPRING, FRICTION .....	D10	28	5		F11	50	18				
SPRING, GOVERNOR .....	E4	38	3		F12	51	13				
SPRING, RATCHET .....	D10	28	7		F14	53	14				
SPRING, STARTER RETURN .....	D10	28	6	WASHER, PLAIN, 8MM .....	F5	44	8				
SPRING, THROTTLE RETURN .....	E4	38	4								
SPRING, VALVE .....	D8	26	10		F6	45	10				
SPRING, WEIGHT RETURN .....	D8	26	7								
STAND, TUBE .....	F11	50	9		F8	47	26				
STARTER ASSY., RECOIL .....	D10	28	1		F11	50	17				
STATOR COMP. ....	F7	46	1		F12	51	12				
STAY, GENERATOR .....	F5	44	3		F13	52	6				
	F6	45	3	WASHER, SPRING, 4MM .....	F2	41	18				
STAY, MUFFLER COVER .....	F4	43	5								
			15	WASHER, SPRING, 5MM .....	F2	41	19				
STUD, COUPLING .....	F7	46	15		F4	43	14				
			18	WASHER, SPRING, 6MM .....	F8	47	28				
SWITCH ASSY., ENGINE STOP .....	D11	29	4	WASHER, SPRING, 8MM .....	F7	46	20				
			6	WASHER, STOPPER, 4MM .....	F14	53	13				
			7	WASHER, THRUST, 16.1MM .....	D9	27	18				
SWITCH ASSY., OIL LEVEL .....	D2	20	2	WEIGHT, GOVERNOR .....	D3	21	7				
SWITCH, VOLT CHANGE .....	F1	40	8	WHEEL ASSY. ....	F11	50	4				
				WHEEL COMP. ....	F12	51	1				
[ T ]				WHEEL KIT .....	F11	50	1				
TANK ASSY., FUEL .....	D16	34	3								
TANK COMP., FUEL .....	D16	34	3								
TERMINAL, INSULATED, 5MM .....	F14	53	6								
TIE, CABLE .....	F1	40	7								
	F8	47	31								
TUBE, 11X100 .....	D1	19	13								
TUBE, BREATHER .....	D1	19	13								
TUBE, FUEL, 4.5X210 .....	D16	34	8								
TUBE, FUEL, 4.5X222 .....	D16	34	8								
[ V ]											
VALVE SET, FLOAT .....	D12	30	2								
VALVE, EX. ....	D8	26	9								
VALVE, IN. ....	D8	26	8								
VARISTOR .....	F7	46	13								
[ W ]											
WASHER COMP., HEAD COVER .....	D1	19	10								
WASHER, 8.2X17X0.8 .....	D2	20	7								
WASHER, DRAIN PLUG, 12MM .....	D2	20	11								

---

**1**

**FOREWORD INDEX**

---

**2**

**ENGINE GROUP**

---

**3**

**FRAME GROUP**

---

**4**

**PART NUMBER INDEX**

---

**5**

**PART NAME INDEX**

---

**HONDA**  
The Power of Dreams





# PARTS CATALOGUE NEWS

Honda Motor Co., Ltd.  
Customer Service Technology Development Division

## PARTS CATALOGUE - CORRECTED

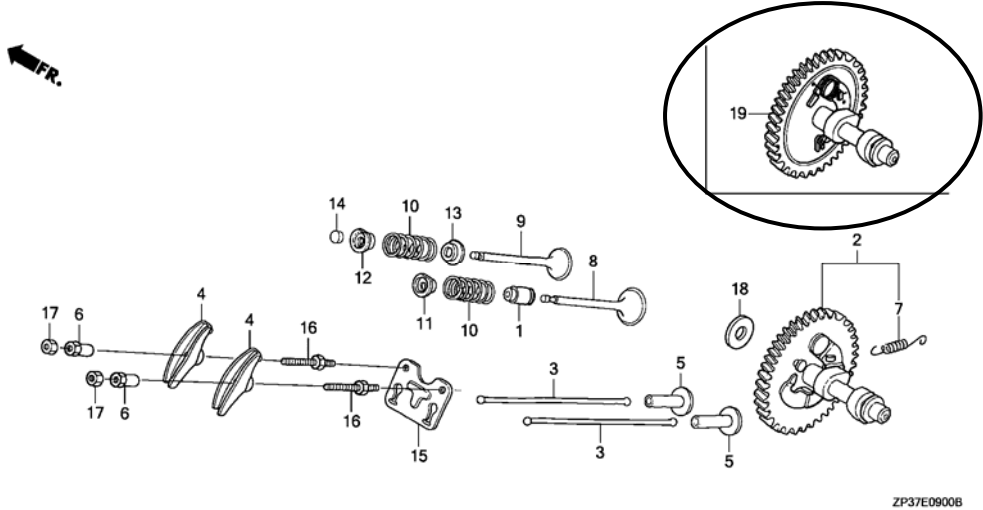
Printed in Japan

CODE NO.	17ZP35F4
PARTS CATALOGUE NEWS	EC3600 EC3600K1 EC4000K1 EC4000K2
NEWS NO.	001

Block No.	Ref. No.	Note	Part No.	Description	Reqd. QTY				Serial No.	Parts catalogue code
					EC 3600 K1	EC 3600 K1	EC 4000 K1	EC 4000 K2		

**E-9 CAMSHAFT**

Ref. No.	(Relative ref. Number) Description	FRT
2	(19) CAMSHAFT ..... INCLUDES: Valve clearance adjustment	2.1



ZP37E0900B

E-9	19	E	14100-Z5K-820	*PART NO. DELETION			
		D	14100-Z5K-920	CAMSHAFT COMP. (LOW NOISE).....	-	1	- -

NOTE A:PART NO. CHANGE D:NEWLY PROVIDED E:PART NO.DELETION K:REQUIRED NO. CORRECTION L:APPLICATION SERIAL NO. CORRECTION  
T:APPLICATION CORRECTION Z:REMARKS CHANGE

PARTS CATALOGUE NEWS

BOOKNo. : 17ZP35F4

Block No.	Ref. No.	Note	Part No.	Description	Reqd. QTY				Serial No.	Parts catalogue code
					EC 3600 K1	EC 3600 K1	EC 4000 K1	EC 4000 K2		
E-14	26	T	99101-ZH8-0800	JET, MAIN, #80.....	(1)	-	(1)	(1)		
			99101-ZH8-0850	JET, MAIN, #85.....	1	-	1	1		
		T			-	(1)	-	-		

NOTE A:PART NO. CHANGE D:NEWLY PROVIDED E:PART NO.DELETION K:REQUIRED NO. CORRECTION L:APPLICATION SERIAL NO. CORRECTION  
T:APPLICATION CORRECTION Z:REMARKS CHANGE



# PARTS CATALOGUE NEWS

Honda Motor Co., Ltd.  
Customer Service Technology Development Division

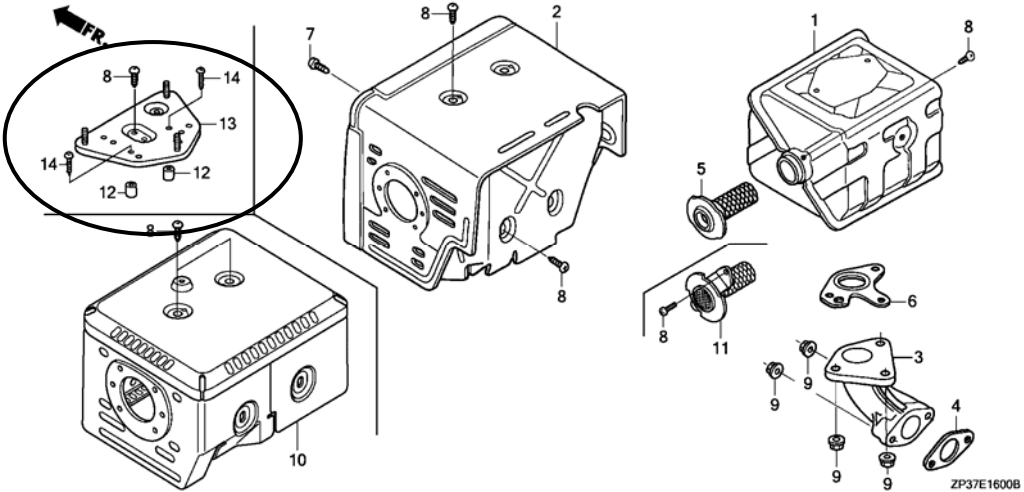
## PARTS CATALOGUE - CORRECTED

Printed in Japan

CODE NO.	17ZP35F4
PARTS CATALOGUE NEWS	EC3600 EC3600K1 EC4000K1 EC4000K2
NEWS NO.	002

Block No.	Ref. No.	Note	Part No.	Description	Reqd. QTY				Serial No.	Parts catalogue code
					EC 3600 K1	EC 3600 K1	EC 4000 K1	EC 4000 K2		

E-16 MUFFLER



E-16	8	K	90050-ZE1-000	SCREW, TAPPING, 5X8. ....	5	-	5	5		
						-	6	-	-----	1058593

NOTE A:PART NO. CHANGE D:NEWLY PROVIDED E:PART NO.DELETION K:REQUIRED NO. CORRECTION L:APPLICATION SERIAL NO. CORRECTION  
T:APPLICATION CORRECTION Z:REMARKS CHANGE

PARTS CATALOGUE NEWS

BOOKNo. : 17ZP35F4

Block No.	Ref. No.	Note	Part No.	Description	Reqd. QTY				Serial No.	Parts catalogue code
					EC 3600 K1	EC 3600 K1	EC 4000 K1	EC 4000 K2		
					-	5	-	-	1058594	-----
	12	D	17233-896-701	COLLAR, AIR CLEANER CASE.....	-	2	-	-	1058594	-----
	13	D	18436-Z1D-H70	BASE COMP., MUFFLER COVER....	-	1	-	-	1058594	-----
	14	D	90050-ZH8-W40	SCREW, TAPPING, 5X25.....	-	2	-	-	1058594	-----

NOTE A:PART NO. CHANGE D:NEWLY PROVIDED E:PART NO.DELETION K:REQUIRED NO. CORRECTION L:APPLICATION SERIAL NO. CORRECTION  
T:APPLICATION CORRECTION Z:REMARKS CHANGE



# PARTS CATALOGUE NEWS

Honda Motor Co., Ltd.

Customer Service Technology Development Division

## PARTS CATALOGUE - CORRECTED

Printed in Japan

CODE NO.	17ZP35F4
PARTS CATALOGUE NEWS	EC3600 EC3600K1 EC4000K1 EC4000K2
NEWS NO.	003

Block No.	Ref. No.	Note	Part No.	Description	Reqd. QTY				Serial No.	Parts catalogue code
					EC 3600	EC 3600 K1	EC 4000 K1	EC 4000 K2		
FOP-1	1	T	06427-ZS8-000	WHEEL KIT.....	-	-	(1)	-	-----	B, F, GV
		T	06427-ZS8-010	.....	(1)	(1)	(1)	(1)	-----	BT, FT, GVT, GVWT, ITT
	5	T	42732-ZP3-000	HOLDER, SHAFT.....	-	-	(2)	(2)	-----	
		D	42732-ZT5-J60	.....	(2)	(2)	-	-		
FOP-1-1	3	T	42732-ZP3-000	HOLDER, SHAFT.....	-	-	(2)	(2)	-----	
		D	42732-ZT5-J60	.....	(2)	(2)	-	-		

NOTE A:PART NO. CHANGE D:NEWLY PROVIDED E:PART NO.DELETION K:REQUIRED NO. CORRECTION L:APPLICATION SERIAL NO. CORRECTION  
M:PART DESCRIPTION CORRECTION T:APPLICATION CORRECTION Z:REMARKS CHANGE



# PARTS CATALOGUE NEWS

Honda Motor Co., Ltd.  
Customer Service Technology Development Division

## PARTS CATALOGUE - CORRECTED

Printed in Japan

CODE NO.	17ZP35F4
PARTS CATALOGUE NEWS	EC3600 EC3600K1 EC4000K1 EC4000K2
NEWS NO.	004

Block No.	Ref. No.	Note	Part No.	Description	Reqd. QTY				Serial No.	Parts catalogue code
					EC 3600	EC 3600 K1	EC 4000 K1	EC 4000 K2		
E-14	6	D	16024-Z5T-901	SCREW SET, DRAIN. ....	-	1	-	-		
	12	T	16172-ZE3-W10	COLLAR, SETTING. ....	1	1	1	1		
FOP-1-1	3	T	42732-ZP3-000	COLLAR, WHEEL SHAFT. ....	-	-	(2)	(2)		
		D	42732-ZT5-J60	HOLDER, SHAFT. ....	(2)	(2)	-	-		

NOTE A:PART NO. CHANGE D:NEWLY PROVIDED E:PART NO. DELETION K:REQUIRED NO. CORRECTION L:APPLICATION SERIAL NO. CORRECTION  
M:PART DESCRIPTION CORRECTION T:APPLICATION CORRECTION Z:REMARKS CHANGE



# PARTS CATALOGUE NEWS

Honda Motor Co., Ltd.

Customer Service Technology Development Division

## PARTS CATALOGUE - CORRECTED

Printed in Japan

CODE NO.	17ZP35F4
PARTS CATALOGUE NEWS	EC3600 EC3600K1 EC4000K1 EC4000K2
NEWS NO.	005

Block No.	Ref. No.	Note	Part No.	Description	Reqd. QTY				Serial No.	Parts catalogue code	
					EC 3600 K1	EC 3600 K1	EC 4000 K1	EC 4000 K2			
E-2	1	T	12200-Z1D-405	HEAD COMP., CYLINDER.....	1	1	1	1	-----	BT, FT, GVT, GVWT, ITT	
		D	12210-Z5K-405	.....	-	1	-	-			
E-3	1	T	12000-Z1D-406	BARREL ASSY., CYLINDER (ALERT) .	1	1	1	1	-----	BT, FT, GVT, GVWT, ITT	
		D	12000-Z5K-406	BARREL ASSY., CYLINDER. ....	-	1	-	-			
E-8	1	T	13010-Z5H-004	RING SET, PISTON (STD.) (TEIKOKU)	1	-	1	1	1124483	-----	BT, FT, GVT, GVWT, ITT
		T	13011-Z5H-004	RING SET, PISTON (0.25) (TEIKOKU)	(1)	-	(1)	(1)	1124483	-----	BT, FT, GVT, GVWT, ITT
		T	13012-Z5H-004	RING SET, PISTON (0.50) (TEIKOKU)	(1)	-	(1)	(1)	1124483	-----	BT, FT, GVT, GVWT, ITT
		T	13013-Z5H-004	RING SET, PISTON (0.75) (TEIKOKU)	(1)	-	(1)	(1)	1124483	-----	BT, FT, GVT, GVWT, ITT
	2	T	13102-ZH9-010	PISTON (0.25).....	(1)	-	(1)	(1)	1124483	-----	BT, FT, GVT, GVWT, ITT
		T	13103-ZH9-010	.....	(1)	-	(1)	(1)	1124483	-----	BT, FT, GVT, GVWT, ITT
		T	13104-ZH9-010	.....	(1)	-	(1)	(1)	1124483	-----	BT, FT, GVT, GVWT, ITT
		D	13102-Z5K-000	PISTON (0.25).....	-	(1)	-	-			
		D	13103-Z5K-000	PISTON (0.50).....	-	(1)	-	-			

NOTE A:PART NO. CHANGE D:NEWLY PROVIDED E:PART NO. DELETION K:REQUIRED NO. CORRECTION L:APPLICATION SERIAL NO. CORRECTION  
M:PART DESCRIPTION CORRECTION T:APPLICATION CORRECTION Z:REMARKS CHANGE

PARTS CATALOGUE NEWS

BOOKNo. : 17ZP35F4

Block No.	Ref. No.	Note	Part No.	Description	Reqd. QTY				Serial No.	Parts catalogue code
					EC 3600 K1	EC 3600 K1	EC 4000 K1	EC 4000 K2		
		D	13104-Z5K-000	PISTON (0.75).....	-	(1)	-	-		

NOTE A:PART NO. CHANGE D:NEWLY PROVIDED E:PART NO.DELETION K:REQUIRED NO. CORRECTION L:APPLICATION SERIAL NO. CORRECTION  
M:PART DESCRIPTION CORRECTION T:APPLICATION CORRECTION Z:REMARKS CHANGE





# PARTS CATALOGUE NEWS

Service Technology Department, Power Products Operations  
Service Division, Honda Motor Co., Ltd.

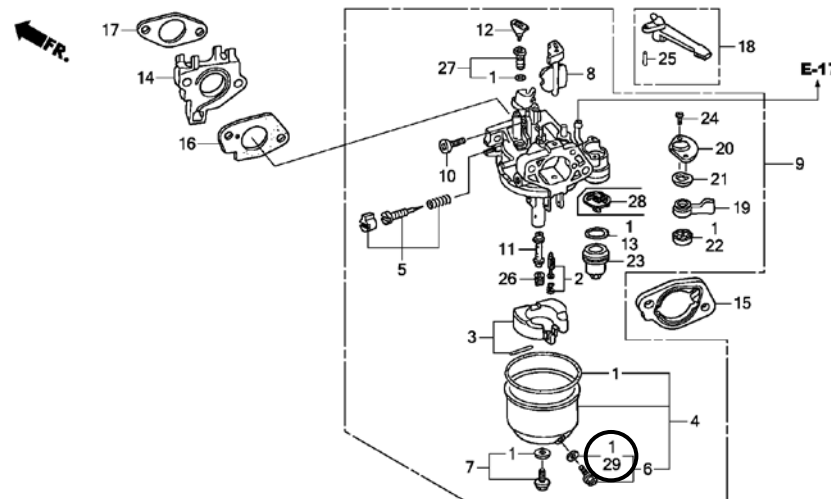
## PARTS CATALOGUE - CORRECTED

Printed in Japan

CODE NO.	17ZP35F4
PARTS CATALOGUE NEWS	EC3600 EC3600K1 EC4000K1 EC4000K2
NEWS NO.	006

Block No.	Ref. No.	Note	Part No.	Description	Reqd. QTY				Serial No.	Parts catalogue code
					EC 3600 K1	EC 3600 K1	EC 4000 K1	EC 4000 K2		

E-14 CARBURETOR



ZP37E1400C

E-14	29	D	16141-Z0S-003	WASHER, PLAIN(6.2X10.7 DRAIN).	-	1	-	-		
E-17	3	E	17510-Z5K-800	*PART NO. DELETION						

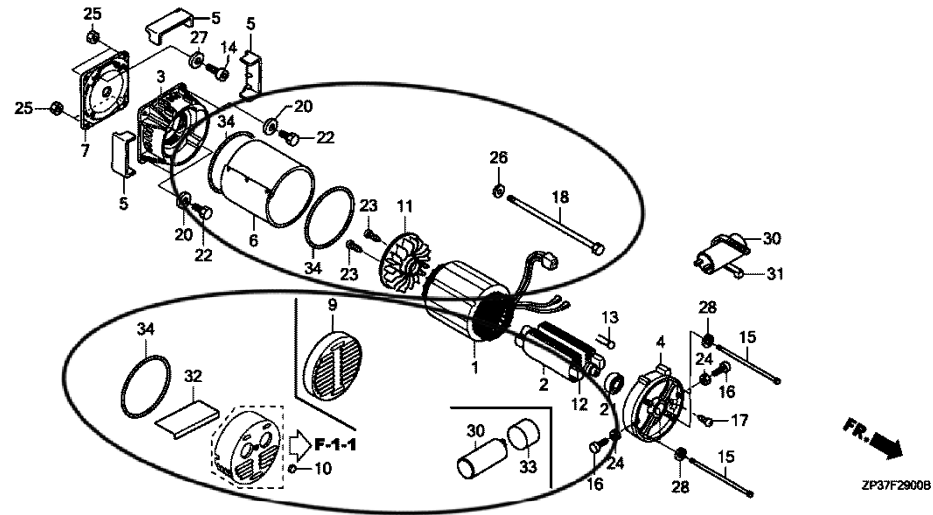
NOTE A:PART NO. CHANGE D:NEWLY PROVIDED E:PART NO. DELETION K:REQUIRED NO. CORRECTION L:APPLICATION SERIAL NO. CORRECTION  
M:PART DESCRIPTION CORRECTION T:APPLICATION CORRECTION Z:REMARKS CHANGE

PARTS CATALOGUE NEWS

BOOKNo. :17ZP35F4

Block No.	Ref. No.	Note	Part No.	Description	Reqd. QTY				Serial No.	Parts catalogue code
					EC 3600 K1	EC 3600 K1	EC 4000 K1	EC 4000 K2		
		D	17510-Z5K-800ZA	TANK ASSY., FUEL *R280*.....POWER RED	-	1	-	-		

F-29 ROTOR/STATOR



F-29	17	T	90110-ZD5-003	SCREW, EARTH.....	1	-	1	1		
					-	1	-	-	-----	BT, ITT
	19	E	90301-ZP4-003	*PART NO. DELETION						
	31	T	32901-ZD5-003	TIE, CABLE.....	1	-	-	-	-----	FT, GVT, GVWT, ITT
					-	1	-	-	-----	ITT
					-	-	1	1	-----	F, FT, GV, GVT, GVWT, ITT
	32	D	31183-ZP3-003	GUARD, SPLASH.....	-	1	-	-	-----	FT, GVT, GVWT
	33	D	32389-ZP3-003	CAP, WATER PROOF.....	-	1	-	-	-----	FT, GVT, GVWT
	34	D	34338-ZP3-003	GASKET.....	-	3	-	-	-----	FT, GVT, GVWT

NOTE A:PART NO. CHANGE D:NEWLY PROVIDED E:PART NO. DELETION K:REQUIRED NO. CORRECTION L:APPLICATION SERIAL NO. CORRECTION  
M:PART DESCRIPTION CORRECTION T:APPLICATION CORRECTION Z:REMARKS CHANGE



# PARTS CATALOGUE NEWS

Service Technology Department, Power Products Operations  
 Service Division, Honda Motor Co., Ltd.

## PARTS CATALOGUE - CORRECTED

Printed in Japan

CODE NO.	17ZP35F4
PARTS CATALOGUE NEWS	EC3600 EC3600K1 EC4000K1 EC4000K2
NEWS NO.	007

Block No.	Ref. No.	Note	Part No.	Description	Reqd. QTY				Serial No.	Parts catalogue code
					EC 3600	EC 3600 K1	EC 4000 K1	EC 4000 K2		
E-8	2	A	13101-Z1D-900	PISTON (STD.).....	-	1	-	-	1177964 -----	
			13101-Z5K-000	.....	-	1	-	-	----- 1177963	
	4		13200-Z1D-000	ROD ASSY., CONNECTING (STD.)...	1	-	1	1	----- -----	BT, FT, GVT, GVWT, ITT
					-	1	-	-	----- 1177963	
		A	13200-Z1D-900	.....	-	1	-	-	1177964 -----	

NOTE A:PART NO. CHANGE D:NEWLY PROVIDED E:PART NO. DELETION K:REQUIRED NO. CORRECTION L:APPLICATION SERIAL NO. CORRECTION  
 M:PART DESCRIPTION CORRECTION T:APPLICATION CORRECTION Z:REMARKS CHANGE



# PARTS CATALOGUE NEWS

Service Technology Department, Power Products Operations  
 Service Division, Honda Motor Co., Ltd.

## PARTS CATALOGUE - CORRECTED

Printed in Japan

CODE NO.	17ZP35F4
PARTS CATALOGUE NEWS	EC3600 EC3600K1 EC4000K1 EC4000K2
NEWS NO.	008

Block No.	Ref. No.	Note	Part No.	Description	Reqd. QTY				Serial No.	Parts catalogue code
					EC 3600	EC 3600 K1	EC 4000 K1	EC 4000 K2		
E-9	8		14711-Z5K-000	VALVE, IN.....	-	1	-	-	----- 1432118	
		A	14711-Z5K-900	.....	-	1	-	-	1432119 -----	
	9		14721-Z5K-000	VALVE, EX.....	-	1	-	-	----- 1432118	
		A	14721-Z5K-900	.....	-	1	-	-	1432119 -----	

NOTE A:PART NO. CHANGE D:NEWLY PROVIDED E:PART NO. DELETION K:REQUIRED NO. CORRECTION L:APPLICATION SERIAL NO. CORRECTION  
 M:PART DESCRIPTION CORRECTION T:APPLICATION CORRECTION Z:REMARKS CHANGE



# PARTS CATALOGUE NEWS

Service Technology Department, Power Products Operations  
 Service Division, Honda Motor Co., Ltd.

## PARTS CATALOGUE - CORRECTED

Printed in Japan

CODE NO.	17ZP35F4
PARTS CATALOGUE NEWS	EC3600 EC3600K1 EC4000K1 EC4000K2
NEWS NO.	009

Block No.	Ref. No.	Note	Part No.	Description	Reqd. QTY				Serial No.	Parts catalogue code
					EC 3600	EC 3600 K1	EC 4000 K1	EC 4000 K2		
E-20	3	T	30700-Z1C-811	CAP ASSY., NOISE SUPPRESSOR (NGK Y-EZD)	1	-	1	1	-----	BT, FT, GVT, GVWT, ITT
		D	30700-Z1C-813	.....	-	1	-	-		

NOTE A:PART NO. CHANGE D:NEWLY PROVIDED E:PART NO. DELETION K:REQUIRED NO. CORRECTION L:APPLICATION SERIAL NO. CORRECTION  
 M:PART DESCRIPTION CORRECTION T:APPLICATION CORRECTION Z:REMARKS CHANGE



# PARTS CATALOGUE NEWS

Service Technology Department, Power Products Operations  
 Service Division, Honda Motor Co., Ltd.

## PARTS CATALOGUE - CORRECTED

Printed in Japan

CODE NO.	17ZP35F4
PARTS CATALOGUE NEWS	EC3600 EC3600K1 EC4000K1 EC4000K2
NEWS NO.	010

(FRANCE-KD)

Block No.	Ref. No.	Note	Part No.	Description	Reqd. QTY				Serial No.	Parts catalogue code
					EC 3600	EC 3600 K1	EC 4000 K1	EC 4000 K2		
F-15-10	4	E	18436-ZH8-W40	*PARTS NO. DELETION						
		D	18436-ZH8-W41	BASE COMP., MUFFLER COVER. ....	1	1	-	-		

NOTE A:PART NO. CHANGE D:NEWLY PROVIDED E:PART NO. DELETION K:REQUIRED NO. CORRECTION L:APPLICATION SERIAL NO. CORRECTION  
 M:PART DESCRIPTION CORRECTION T:APPLICATION CORRECTION Z:REMARKS CHANGE

April 20, 2017



# PARTS CATALOGUE NEWS

Service Technology Department, Power Products Operations  
Service Division, Honda Motor Co., Ltd.

## PARTS CATALOGUE - CORRECTED

Printed in Japan

CODE NO.	17ZP35F4
PARTS CATALOGUE NEWS	EC3600 EC3600K1 EC4000K1 EC4000K2
NEWS NO.	011

(FRANCE-KD)

Block No.	Ref. No.	Note	Part No.	Description	Reqd. QTY				Serial No.	Parts catalogue code
					EC 3600	EC 3600 K1	EC 4000 K1	EC 4000 K2		
E-15	9	E	17410-Z5K-010	*PARTS NO. DELETION						
		D	17410-Z5K-020	ELBOW COMP., AIR CLEANER.....	-	1	-	-		
E-16	1	E	18310-Z5K-000	*PARTS NO. DELETION						
		D	18310-Z5K-010	MUFFLER COMP.....	-	1	-	-		

NOTE A:PART NO. CHANGE D:NEWLY PROVIDED E:PART NO. DELETION K:REQUIRED NO. CORRECTION L:APPLICATION SERIAL NO. CORRECTION  
M:PART DESCRIPTION CORRECTION T:APPLICATION CORRECTION Z:REMARKS CHANGE



# PARTS CATALOGUE NEWS

Service Technology Department, Power Products Operations  
 Service Division, Honda Motor Co., Ltd.

## PARTS CATALOGUE - CORRECTED

Printed in Japan

CODE NO.	17ZP35F4
PARTS CATALOGUE NEWS	EC3600 EC3600K1 EC4000K1 EC4000K2
NEWS NO.	012

(FRANCE-KD)

Block No.	Ref. No.	Note	Part No.	Description	Reqd. QTY				Serial No.	Parts catalogue code
					EC 3600	EC 3600 K1	EC 4000 K1	EC 4000 K2		
E-16	2	T	18320-ZF6-W01	PROTECTOR COMP., MUFFLER (100DB)	-	-	1	-	-----	B, F, GV
		D	18320-ZF6-W02	.....	1	-	1	1	-----	BT, FT, GVT, GVWT, ITT

NOTE A:PART NO. CHANGE D:NEWLY PROVIDED E:PART NO. DELETION K:REQUIRED NO. CORRECTION L:APPLICATION SERIAL NO. CORRECTION  
 M:PART DESCRIPTION CORRECTION T:APPLICATION CORRECTION Z:REMARKS CHANGE





# PARTS CATALOGUE NEWS

Service Technology Department, Power Products Operations  
Service Division, Honda Motor Co., Ltd.

## PARTS CATALOGUE - CORRECTED

Printed in Japan

CODE NO.	17ZP35F4
PARTS CATALOGUE NEWS	EC3600 EC3600K1 EC4000K1 EC4000K2
NEWS NO.	013

Block No.	Ref. No.	Note	Part No.	Description	Reqd. QTY				Serial No.	Parts catalogue code
					EC 3600	EC 3600 K1	EC 4000 K1	EC 4000 K2		
F-15-10	1	L	17233-896-701	COLLAR, AIR CLEANER CASE. ....	2	-	-	-		
					-	2	-	-	-----	8400728
	4	L	18436-ZH8-W41	BASE COMP., MUFFLER COVER. ....	1	-	-	-		
					-	1	-	-	-----	8400728
	8	L	90050-ZE1-000	SCREW, TAPPING, 5X8. ....	1	-	-	-		
					-	1	-	-	-----	8400728
	9	L	90050-ZH8-W40	SCREW, TAPPING, 5X25. ....	2	-	-	-		
					-	2	-	-	-----	8400728

NOTE A:PART NO. CHANGE D:NEWLY PROVIDED E:PART NO. DELETION K:REQUIRED NO. CORRECTION L:APPLICATION SERIAL NO. CORRECTION  
M:PART DESCRIPTION CORRECTION T:APPLICATION CORRECTION Z:REMARKS CHANGE



# PARTS CATALOGUE NEWS

Service Technology Department, Power Products Operations  
 Service Division, Honda Motor Co., Ltd.

## PARTS CATALOGUE - CORRECTED

Printed in Japan

CODE NO.	17ZP35F4
PARTS CATALOGUE NEWS	EC3600 EC3600K1 EC4000K1 EC4000K2
NEWS NO.	014

Block No.	Ref. No.	Note	Part No.	Description	Reqd. QTY				Serial No.	Parts catalogue code
					EC 3600	EC 3600 K1	EC 4000 K1	EC 4000 K2		
F-31	4		87152-ZP3-E61	LABEL, SPECIFICATION.....	-	1	-	-	----- 8502080	FT, GVT, GVWT, ITT
		A	87152-ZP3-E62	.....	-	1	-	-	8502081 -----	FT, GVT, GVWT, ITT
			87152-ZP3-E91	.....	-	1	-	-	----- 8502000	BT
		A	87152-ZP3-E92	.....	-	1	-	-	8502001 -----	BT

NOTE A:PART NO. CHANGE D:NEWLY PROVIDED E:PART NO. DELETION K:REQUIRED NO. CORRECTION L:APPLICATION SERIAL NO. CORRECTION  
 M:PART DESCRIPTION CORRECTION T:APPLICATION CORRECTION Z:REMARKS CHANGE

# HONDA PARTS CATALOGUE NEWS

Service Information Department, Power Products Operations  
Service Division, Honda Motor Co., Ltd.

## PARTS CATALOGUE - CORRECTED

Printed in Japan

CODE NO.	17ZP35F4
PARTS CATALOGUE NEWS	EC3600 EC3600K1 EC4000K1 EC4000K2
NEWS NO.	015

Block No.	Ref. No.	Note	Part No.	Description	Reqd. QTY				Serial No.	Parts catalogue code	
					EC 3600	EC 3600 K1	EC 4000 K1	EC 4000 K2			
E-11	12		90008-ZE2-003	BOLT, FLANGE, 6X10.....	3	-	3	3			
					-	3	-	-	-----	1134417	
	A		95701-06010-00	.....	-	3	-	-	1134418	-----	
E-17	2	L	16955-ZE1-000	JOINT, FUEL TANK.....	1	-	1	1	-----	1194370	BT, FT, GVT, GVWT, ITT
					-	-	1	-	-----	-----	B, F, GV
		T	16955-ZE1-010	.....	1	-	1	1	1194371	-----	BT, FT, GVT, GVWT, ITT
					-	1	-	-			
		4	D	17620-Z1T-800	CAP COMP., FUEL FILLER (CHROME PLATED) (TOYOSHA)	-	-	1	-	1173506	-----
	5	D	17631-Z1T-800	PACKING, FUEL FILLER CAP (39X62X3) (TOYOSHA)	-	-	1	-	1173506	-----	BT, FT, GVT

NOTE A:PART NO. CHANGE D:NEWLY PROVIDED E:PART NO. DELETION K:REQUIRED NO. CORRECTION L:APPLICATION SERIAL NO. CORRECTION  
M:PART DESCRIPTION CORRECTION T:APPLICATION CORRECTION Z:REMARKS CHANGE

# HONDA PARTS CATALOGUE NEWS

## PARTS CATALOGUE - CORRECTED

CODE NO.	17ZP35F4
PARTS CATALOGUE NEWS	EC3600 EC3600K1 EC4000K1 EC4000K2
NEWS NO.	016

Block No.	Ref. No.	Note	Part No.	Description	Reqd. QTY				Serial No.	Parts catalogue code	
					EC 3600	EC 3600 K1	EC 4000 K1	EC 4000 K2			
E-9	2	L	14100-Z5K-820	CAMSHAFT ASSY.....	-	1	-	-	1029847 1126265		
	6		14451-ZE1-013	PIVOT, ROCKER ARM.....	2	-	2	2			
						-	2	-	-	----- 1239799	
		A	14451-Z4M-000	.....		-	2	-	-	1239800 -----	
	7	L	14568-ZE1-000	SPRING, WEIGHT RETURN.....	1	-	1	1			
						-	1	-	-	1029847 1126265	
	11	T	14771-Z8S-000	RETAINER, IN. VALVE SPRING....	1	1	1	1	-----	-----	BT, FT, GVT, GVWT, ITT
		T	14771-ZE2-000	.....	-	-	1	-	-----	-----	B, F, GV
	12	D	14773-Z8S-000	RETAINER, EX. VALVE SPRING....	1	-	1	1	-----	-----	BT, FT, GVT, GVWT, ITT
		T	14773-ZE2-000	.....	-	-	1	-	-----	-----	B, F, GV
	15	L	14791-ZE2-010	GUIDE, PUSH ROD.....	1	-	-	1	-----	1163887	
						-	-	1	-	-----	B, F, GV
		T	14791-Z1D-000	.....	1	-	-	1	1163888 -----		
						-	1	1	-	-----	BT, FT, GVT, GVWT, ITT
	E-11	9		28461-ZE2-W02	GRIP, STARTER.....	1	-	1	1	----- 1184518	BT, FT, GVT, GVWT, ITT

NOTE A:PART NO. CHANGE D:NEWLY PROVIDED E:PART NO. DELETION K:REQUIRED NO. CORRECTION L:APPLICATION SERIAL NO. CORRECTION  
M:PART DESCRIPTION CORRECTION T:APPLICATION CORRECTION Z:REMARKS CHANGE

PARTS CATALOGUE NEWS

BOOKNo. : 17ZP35F4

Block No.	Ref. No.	Note	Part No.	Description	Reqd. QTY				Serial No.	Parts catalogue code
					EC 3600	EC 3600 K1	EC 4000 K1	EC 4000 K2		
					-	-	1	-	-----	B, F, GV
		A	28461-ZE2-W03	.....	1	-	1	1	1184519 -----	BT, FT, GVT, GVWT, ITT
E-14	14	L	16211-ZE2-000	INSULATOR, CARBURETOR.....	1	-	1	1	----- 1234554	BT, FT, GVT, GVWT, ITT
					-	-	1	-	-----	B, F, GV
		T	16211-ZE2-010	.....	1	-	1	1	1234555 -----	BT, FT, GVT, GVWT, ITT
					-	1	-	-		
F-31	2	T	87106-ZD5-000	MARK, FUEL CAUTION.....	1	-	-	-	----- 8310125	
					-	-	1	-	-----	B, F, GV
	9	T	87709-Z07-S50	MARK, RECYCLE.....	1	1	-	1	-----	GVWT
					-	1	-	-	8502841 -----	BT, FT, GVT
	15	L	87106-ZD5-010	MARK, FUEL CAUTION.....	1	-	-	-	8310126 -----	
					-	1	1	1	-----	BT, FT, GVT, GVWT, ITT

NOTE A:PART NO. CHANGE D:NEWLY PROVIDED E:PART NO. DELETION K:REQUIRED NO. CORRECTION L:APPLICATION SERIAL NO. CORRECTION  
M:PART DESCRIPTION CORRECTION T:APPLICATION CORRECTION Z:REMARKS CHANGE

# HONDA PARTS CATALOGUE NEWS

## PARTS CATALOGUE - CORRECTED

CODE NO.	17ZP35F4
PARTS CATALOGUE NEWS	EC3600 EC3600K1 EC4000K1 EC4000K2
NEWS NO.	017

Block No.	Ref. No.	Note	Part No.	Description	Reqd. QTY				Serial No.	Parts catalogue code
					EC 3600	EC 3600 K1	EC 4000 K1	EC 4000 K2		
E-2	1	E	12210-Z5K-405	*PART NO. DELETION						
		T	12200-Z1D-405	HEAD COMP., CYLINDER.....	1	-	1	1	-----	BT, FT, GVT, GVWT, ITT
		D	12210-Z5K-415	.....	-	1	-	-		
F-15-10	2	E	18433-ZF6-W40	*PART NO. DELETION						
		D	18433-Z5T-000	COVER COMP., MUFFLER.....	1	-	-	-		
		15	T	18437-Z5T-000	STAY, MUFFLER COVER.....	1	1	-	-	
		16	T	19619-ZL8-300	COLLAR, FAN COVER.....	1	1	-	-	
		17	T	90006-Z5T-000	SCREW, TAPPING, 6X25.....	1	1	-	-	

NOTE A:PART NO. CHANGE D:NEWLY PROVIDED E:PART NO. DELETION K:REQUIRED NO. CORRECTION L:APPLICATION SERIAL NO. CORRECTION  
M:PART DESCRIPTION CORRECTION T:APPLICATION CORRECTION Z:REMARKS CHANGE

# HONDA PARTS CATALOGUE NEWS

## PARTS CATALOGUE - CORRECTED

CODE NO.	17ZP35F4
PARTS CATALOGUE NEWS	EC3600 EC3600K1 EC4000K1 EC4000K2
NEWS NO.	018

Block No.	Ref. No.	Note	Part No.	Description	Reqd. QTY				Serial No.	Parts catalogue code
					EC 3600	EC 3600 K1	EC 4000 K1	EC 4000 K2		
E-3	1	T	12000-Z1D-406	BARREL ASSY., CYLINDER (ALERT).	1	-	1	1	-----	BT, FT, GVT, GVWT, ITT
	8	D	91201-Z7B-003	OIL SEAL, 30X46X8.....	-	1	-	-		

NOTE A:PART NO. CHANGE D:NEWLY PROVIDED E:PART NO. DELETION K:REQUIRED NO. CORRECTION L:APPLICATION SERIAL NO. CORRECTION  
M:PART DESCRIPTION CORRECTION T:APPLICATION CORRECTION Z:REMARKS CHANGE