

GENERATOR

EU10iT1

PARTS CATALOGUE

2

FOREWORD INDEX

1

ENGINE GROUP

2

FRAME GROUP

3

PART NUMBER INDEX

4

PART NAME INDEX

5

Instruction for use of parts catalogue

- **This parts catalogue was prepared based on the latest information available as of March 20, 2016.**
 - See the parts catalogue news for any revision that is made after March 20, 2016.
- **Always specify the part number when ordering a part.**
 - Check the model, type, serial numbers, color, maker, and the size as needed before ordering a part.
 - Note that the illustrations (part drawings) can differ from the actual parts in shape. They are given just to help you to refer to the parts.
- **When modifications or additions to this parts catalogue are made, a revised edition will be issued at an appropriate time, with successively progressing revision numbers on the cover. We recommend obtaining such revisions in order to keep your parts catalogue up-to-date at all times. To check whether a parts catalogue revision has been issued, please contact your Honda distributor.**

Initial version issue date August 10, 2013
Honda Motor Co., Ltd.

CONTENTS

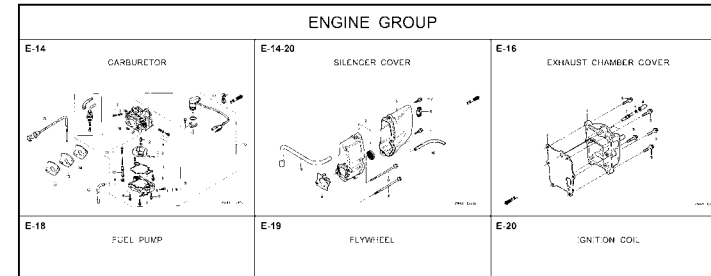
	Page
● Instruction for use of parts catalogue	1
● How to refer to the part information	2
● Part catalogue structure	3
● When the parts were revised.....	4
● Abbreviations used in the parts catalogue.....	4
● How to check the part block and serial numbers.....	5
● Models, parts catalogue codes and applicable serial numbers.....	6
● Features of each type.....	8
● Fuel hose, general purpose hoses and vinyl hose	10
● FLAT RATE SERVICE TIME	11
● Illustrated index	16
● ENGINE GROUP.....	19
● FRAME GROUP.....	28
● PART NO. INDEX.....	54
● PART NAME INDEX.....	56

How to refer to the part information

1

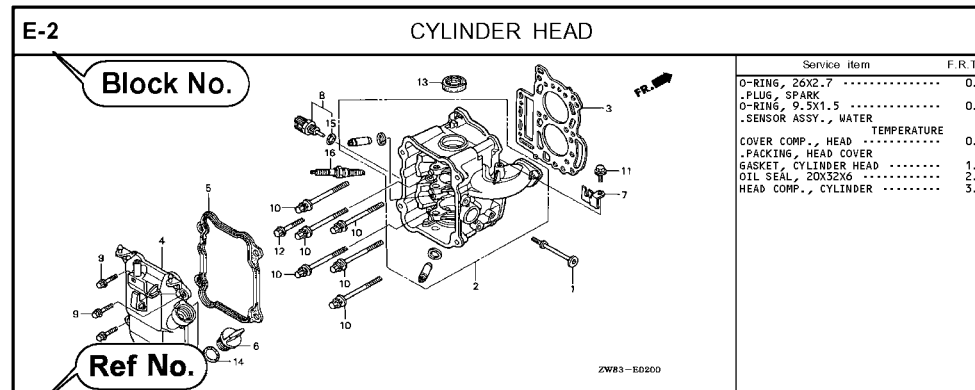
B Reference with "Part number index"

PART NO. INDEX				
Part Number	Page Ref.	Part Number	Page Ref.	Pi
06000		15212-ZW9-000	49 7	17583
		15220-ZW9-003	49 8	17583
06316-ZW9-000	104 1	15332-ZW9-000	74 2	17611
		15332-ZW9-A30	76 2	17611
11000		15400-PFB-004	46 5	17612
		15422-ZW9-000	49 9	17620
11300-ZW9-000	46 1	15473-881-000	49 10	17620
11300-ZW9-800	46 1	15474-ZW9-000	49 11	17624
11340-ZW9-000	46 2	15611-921-000	45 6	17650
11342-ZW9-000	46 3	15655-ZW9-000	46 6	
11381-ZW9-003	47 1			17660
				17661
12000		16000		
		16010-ZV4-005	55 1	17665
12000-ZW9-000ZA	46 4	16011-ZV4-005	55 2	17670
12155-ZV4-A00	48 1	16013-ZW9-003	55 3	17680
12166-ZW9-000	45 1	16016-ZW9-003	55 4	
12209-6B4-681	51 1	16016-ZW9-721	55 4	17701
12210-ZW9-000ZA	45 2	16023-ZW9-003	55 5	17701
12216-ZE2-300	74 1	16024-ZV4-650	55 6	17701
		16028-ZV4-650	55 7	17702



C Reference with "Part name index"

PART NAME INDEX		
Part name	Page	Ref.
[A]		
ABSORBER, FUEL	80	5
ARMATURE COMP.	62	7
ARM COMP., LINK JOINT	102	18
ARM COMP., SHIFT LINK	102	14
ARM COMP., TILT	97	20
ARM, FUEL PUMP ROCKER	51	4
ARM, REVERSE LOCK	97	18
ARM, SHIFT LINK	92	7
ARM, STOPPER	52	12
ARM, THROTTLE REMOTE	92	6
ARM, VALVE ROCKER	51	3
[B]		
BAG, TOOL, 160MM	101	10
BAND	103	37
BAND B1, WIRE	87	1
BAND, CORD	85	18
BAND, TUBE CLIP, 11MM	81	20
BAND, TUBE CLIP, 12.5MM	81	19

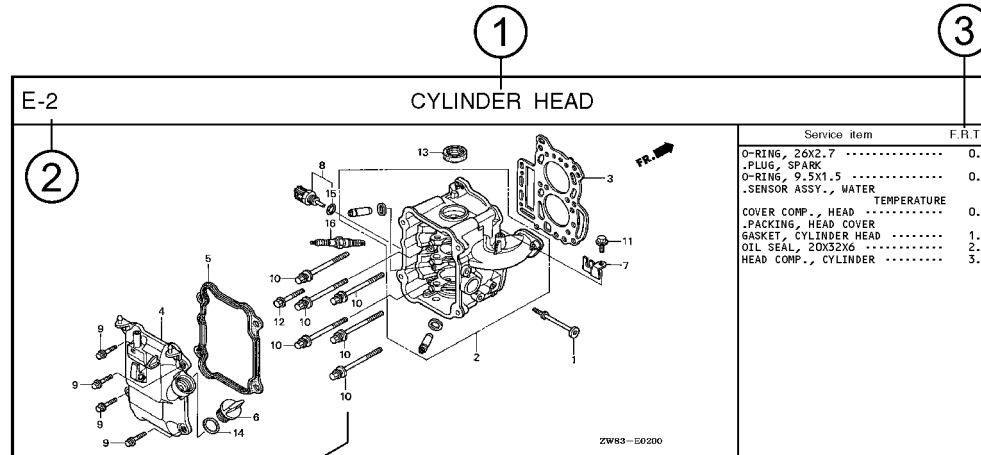


Ref. No.	Part No.	Description	Reqd. QTY						Serial No.	Parts catalogue code
			9901	9901	1001	1001	1001	1001		
1	12166-ZW9-000	STOPPER, ENGINE SIDE	2	2	2	2	2	2		
2	12210-ZW9-000ZA	HEAD COMP., CYLINDER	1	1	1	1	1	1		
3	12251-ZW9-003	GASKET, CYLINDER HEAD	1	1	1	1	1	1		
4	12310-ZW9-000	COVER COMP., HEAD	1	1	1	1	1	1		
5	12312-ZW9-000	PACKING, HEAD COVER	1	1	1	1	1	1		
6	15611-921-000	CAP, OIL (NO GAUGE)	1	1	1	1	1	1		
7	16617-ZW9-000	HOLDER, CABLE	1	1	1	1	1	1	SC,SG	
	16617-ZW9-010		1	1	1	1	1	1	1001800 LHC,LHD	
			1	1	1	1	1	1	LHC,LHD	
8	35673-ZV5-003	SENSOR ASSY., WATER	1	1	1	1	1	1		
9	90003-ZW9-000	BOLT, FLANGE, 6X22	4	4	4	4	4	4		
10	90007-ZW9-003	BOLT, FLANGE, 8X83	6	6	6	6	6	6		
11	90011-ZW9-000	BOLT, FLANGE, 6X14(CT200)	1	1	1	1	1	1		
12	90020-ZW9-000	BOLT, FLANGE, 8X40	2	2	2	2	2	2		
13	91202-KJ9-003	OIL SEAL, 30X32X6	1	1	1	1	1	1		
14	91301-805-000	O-RING, 26X2.7	1	1	1	1	1	1		
15	91307-PK2-005	O-RING, 9.5X1.5(HONDA KIKAKI)	1	1	1	1	1	1		
16	98059-55916	PLUG, SPARK (CR5EH-9)	2	2	2	2	2	2		
	98059-55926	PLUG, SPARK (U16FER9)	2	2	2	2	2	2		

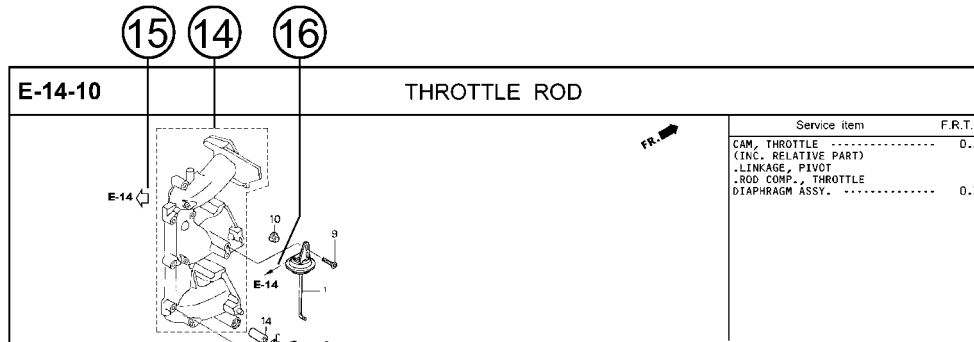
Page No.

2000.09.20 E

Part catalogue structure



Ref. No.	Part No.	Description	Reqd. QTY						Serial No.	Parts catalogue code
			BF 9.9D1	BFF 9.9D1	BF 10D1	BFF 10D1	BF 10B1	BFF 10B1		
1	12166-ZW9-000	STOPPER, ENGINE SIDE	2	2	2	2	2			
2	12210-ZW9-000ZA	HEAD COMP., CYLINDER								
		NH8 DARK GRAY	1	1	1	1	1			
3	12251-ZW9-003	GASKET, CYLINDER HEAD	1	1	1	1	1			
4	12310-ZW9-000	COVER COMP., HEAD	1	1	1	1	1			
5	12312-ZW9-000	PACKING, HEAD COVER	1	1	1	1	1			
6	15611-921-000	CAP, OIL	1	1	1	1	1			
		(NO GAUGE)								
7	16617-ZW9-000	HOLDER, CABLE	1	1	1	1	1		SC,SG	
	16617-ZW9-010		1	1	1	1	1		1001800 LHC,LHD	



① Block title ② Block number

③ Service item/Flat rate time

④ Reference number

- Title number marked with the parenthesis or parentheses indicates that it continues from the previous page.

⑤ Part number ⑥ Honda color code

⑦ Description

⑧ Assemblies

- Sections framed with broken lines in the exploded view drawings are available as complete assemblies. (Their individual parts can also be obtained.)

⑨ Color description

⑩ Note

- Notes are shown with the parentheses in the part name column.

⑪ Required quantity

- Required QTY shown in the parenthesis or parentheses indicates the optional part.
- Required QTY marked with "N" Indicates the optional part that should be selected as needed.
- Required QTY indicates the number of the part used in the block.

⑫ Serial number

⑬ Type

- When the type column is blank, it indicates that the part is applicable to all types.
- As the type of the actual unit may differ from the "parts catalogue, type" please refer to "Models, types and applicable serial numbers" for confirmation.

⑭

- Parts enclosed within a dotted line are covered in a different block.

⑮

- A hollow arrow indicates the block No. for the parts enclosed within a dotted line.

⑯

- A solid arrow indicates the block No. the part in question is connected to.

When the parts were revised



Ref. No.	Part No.	Description	Reqd. QTY						Serial No.
			BF 9.9D1	BFP 9.9D1	BF 10D1	BFP 10D1	BF 10B1	BFP 10B1	
1	12166-ZW9-000	STOPPER, ENGINE SIDE	2	2	2	2	2	2	
2	12210-ZW9-000ZA	HEAD COMP., CYLINDER							
		NH8.....DARK GRAY	1	1	1	1	1	1	
3	12251-ZW9-003	GASKET, CYLINDER HEAD	1	1	1	1	1	1	
4	12310-ZW9-000	COVER COMP., HEAD	1	1	1	1	1	1	
5	12312-ZW9-000	PACKING, HEAD COVER	1	1	1	1	1	1	
6	15611-921-000	CAP, OIL (NO GAUGE)	1	1	1	1	1	1	
7	16617-ZW9-000	HOLDER, CABLE (###)	1	1	1	1	1	1	
	16617-ZW9-010		1	1	1	1	1	1	

The number has been used from the initial model without revision.

When shown at the left side, it is applicable to the models of No.1001801 and the subsequent numbers.

When shown at the right side, it is applicable to the models up to No.1001800.

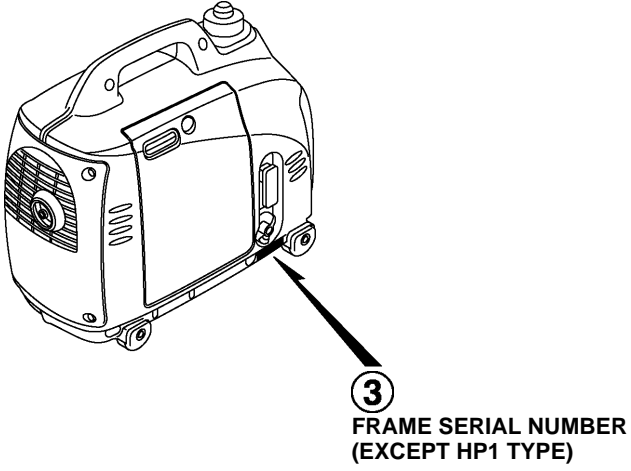
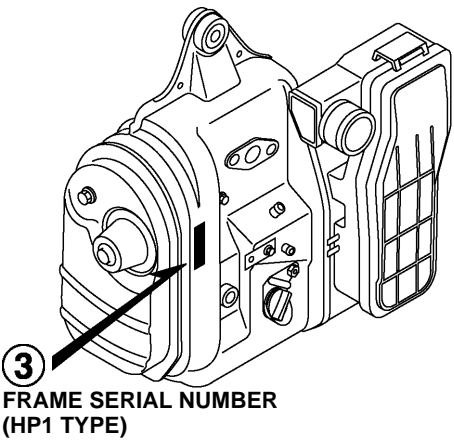
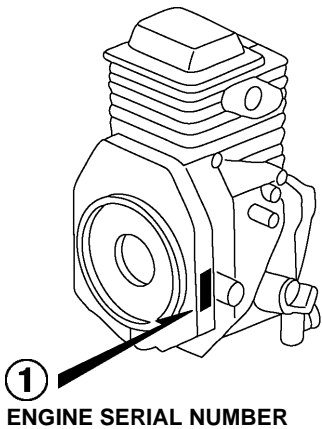
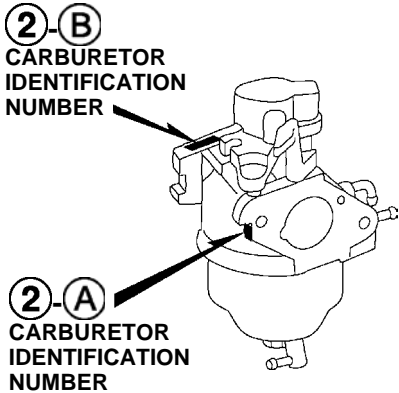
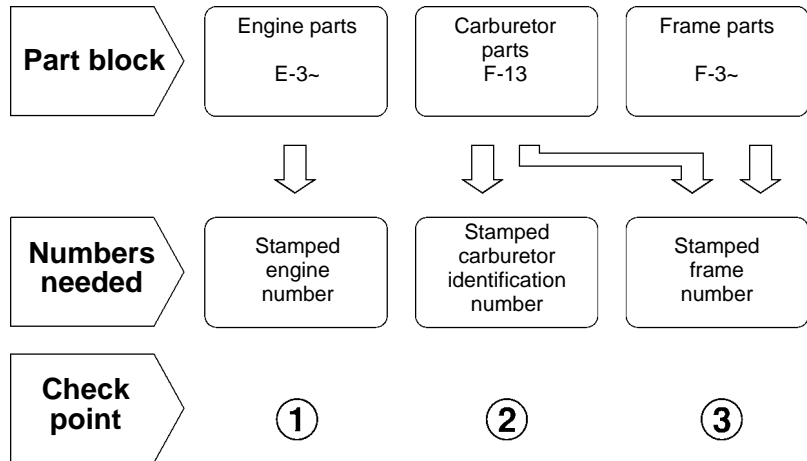
- The parts listed with "###" at the end of the parts name have limited supply period (parts not for sale).

Abbreviations used in the parts catalogue

• The following abbreviations are used in the parts name column.

- | | |
|--|-----------------------------|
| A Ampere | FR.Front |
| A.C. Alternating current | IN.Inlet |
| ASSY. Assembly | L (100L) .Link (100 Links) |
| AT. Automatic transmission | L.Left |
| C.D.I. Capacitive discharge ignition | MMMillimeter |
| COMP. ... Complete | MT.Manual Transmission |
| D.C. Direct current | P.T.O.Power take off |
| EX. Exhaust | R.Right |
| G.F.C.I ... Ground fault circuit interruptor | RR.Rear |
| HEX. Hexagonal | STD.Standard |
| H.S.T. Hydrostatic transmission | T (22T) ...Tooth (22 Teeth) |
| | VVolt |
| | WWatt |

How to check the part block and serial numbers



Models, parts catalogue codes and applicable serial numbers

- Models, parts catalogue codes and applicable serial Nos. given in this parts catalogue can be identified as follows.

Model	Type	Parts catalogue type	Engine		Applicable engine serial No.	Applicable frame serial No.	Applicable carburetor identification No.
			Model	Type			
EU10iT1	B	B	GXH50T	ED7	GCBWT-1000001~	EAAT-1000001~	BF30C G
	B2	B2					
	CL	CL					
	F	F					
	G	G					
	GW1	GW1		EU4		EAAT-1000001~	
	HP1	HP1		EU3			
	LB	LB		ED6			
	LL0	LL0					
	LL1	LL1					
LT	LT						

Model	Type	Parts catalogue type	Engine		Applicable engine serial No.	Applicable frame serial No.	Applicable carburetor identification No.
			Model	Type			
EU10iT1	RG	RG	GXH50T	ED7	GCBWT-1000001~	EAAT-1000001~	BF30C G
	RH	RH		ED2			
	RR0	RR0		ED3			
	RR1	RR1					
	SB	SB					
	SK1	SK1					
	SS0	SS0					
	SS1	SS1					
	U	U					
	W	W					

* Of carburetor identification numbers, only the portions underlined in the example below are used for registration.

BF 30C G KC ナ
 Ⓐ Ⓑ

Features of each type

• See the following table for the features of each type. (Items in brackets are optional)

Specifications		Model	EU10iT1										
		Type	B	B2	CL	F	G	GW1	HP1	LB	LL0	LL1	LT
Frequency	50Hz		●	●	●	●	●	●					
	60Hz									●	●	●	●
Consent	10A/250V												
	10/16A-250V				●								
	13A/250V		●										
	15A/125V										●	●	●
	15A/250V												
	16A/130V			●									
	16A/250V				●		●	●					
	20A/250V									●			

Specifications		Model	EU10iT1									
		Type	RG	RH	RR0	RR1	SB	SK1	SS0	SS1	U	W
Frequency	50Hz		●	●	●	●					●	●
	60Hz						●	●	●	●		
Consent	10A/250V			●	●	●	●		●	●		●
	10/16A-250V											
	13A/250V											
	15A/125V											
	15A/250V										●	
	16A/130V											
	16A/250V		●						●			
	20A/250V											

Fuel hose, general purpose hoses and vinyl hose

- The standard part fuel hose, general purpose hose and vinyl hose may be substituted by the coiled bulk part.
- When ordering the standard part fuel hose, general purpose hose and vinyl hose use the bulk part number written in the parts catalog in brackets () underneath the part name.
- When exchanging the hose, cut and use at the specified length as mentioned in the part name.
(For the method of cutting the bulk part, and method of filling out orders etc., please refer to the instructions issued with the bulk part.)

Bulk part number of fuel hose, general purpose hose and vinyl hose.

Example: 9 5 0 0 1 - 7 5 0 0 1 - 5 0 M

Bulk part number:

Refers to the bulk part.

Marking code (fuel hose and general purpose hose)

Change code (Vinyl hose)

Indicates number mark or change sequence, however, the code for the bulk part must be strictly 0 (zero).

Types of code:

- | | | | | | |
|-------------|--|----------------|-------------|--------------|---------------|
| • Fuel hose | 2: Red outside braid
(3 mm inside dia. only) | • General hose | 1: Ash gray | • Vinyl hose | 1: Clear |
| | 5: Black inside braid | | 2: Ash gray | | 2: Black |
| | 3: Red (3 mm inside dia. only) | | 3: Black | | 3: Light red |
| | 4: Ash gray with red stripe
(3 mm inside dia. only) | | 5: Black | | 6: Light red |
| | 6: Black | | | | 7: Pale black |

Lengths:

- 001: 1 m (standard)
003: 3 m
008: 8 m } Application or specification of some parts is not settled.

I.D code: (fuel hose and general purpose hose)

- | | | | | |
|------------|--------------------|--------------------|-----------------------------|-----------------------------|
| 30: 3.0 mm | 50: 5.0 mm | 70: 7.0 mm | 11: 11 mm | 12: 12 (outside dia. 17) mm |
| 35: 3.5 mm | 55: 5.3 mm, 5.5 mm | 75: 7.3 mm, 7.5 mm | 91: 12 (outside dia. 15) mm | 14: 14 mm |
| 45: 4.5 mm | 65: 6.5 mm | 80: 8.0 mm | 92: 12 (outside dia. 16) mm | 17: 17 mm |

ID./OD. code: (vinyl hose)

- | | | | | |
|-------------------------|--------------------------|---------------------------|---------------------------|---------------------------|
| 01: ID. 2.9, OD. 6.8 mm | 12: ID. 5.0, OD. 7.0 mm | 21: ID. 8.0, OD. 9.0 mm | 37: ID. 11.0, OD. 15.0 mm | 50: ID. 16.0, OD. 19.0 mm |
| 03: ID. 3.0, OD. 6.0 mm | 10: ID. 5.0, OD. 8.0 mm | 23: ID. 8.0, OD. 12.0 mm | 38: ID. 12.0, OD. 13.0 mm | 55: ID. 17.5, OD. 20.5 mm |
| 05: ID. 3.5, OD. 6.5 mm | 11: ID. 5.0, OD. 9.0 mm | 25: ID. 9.0, OD. 11.0 mm | 39: ID. 12.0, OD. 14.0 mm | 60: ID. 22.0, OD. 27.0 mm |
| 07: ID. 4.0, OD. 7.0 mm | 14: ID. 6.0, OD. 9.0 mm | 27: ID. 9.0, OD. 13.0 mm | 40: ID. 12.0, OD. 16.0 mm | |
| 08: ID. 4.5, OD. 6.5 mm | 17: ID. 7.0, OD. 9.0 mm | 33: ID. 10.0, OD. 14.0 mm | 43: ID. 13.0, OD. 15.0 mm | |
| 09: ID. 4.5, OD. 8.0 mm | 19: ID. 7.0, OD. 11.0 mm | 36: ID. 11.0, OD. 13.0 mm | 45: ID. 14.0, OD. 18.0 mm | |

Hose type:

- 1: Fuel hose
3: Vinyl hose
5: General hose

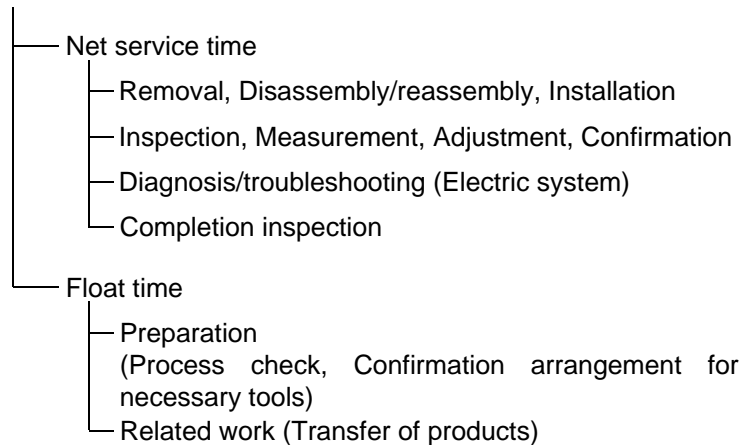
⊙ **CAUTION: It is DANGEROUS to confuse the fuel hose with the general purpose hose or vinyl hose.**

Never use a general purpose hose or vinyl hose in place of a fuel hose or vice versa. Always use the correct bulk part in the parts catalogue, according to the service manual or the instructions issued with the bulk part.

FLAT RATE SERVICE TIME

Flat rate service time (FRT) means the standard time required to service a product, which is listed in this manual to help the dealers control the actual working process and calculate the service charge by using it as a guide.

FRT setting system



* Float time is set by multiplying the net service time by a given coefficient.

Editorial style

The service items shown in the text are listed with the exchange work time for the repair sales parts as the subject. Other representative service items not using repair parts (removal/installation, adjustment, inspection/measuring, and other work) are listed collectively in the list in the preface, classified according to the work.

FRT setting standard

- Decimal system (in unit of 0.1) is adopted to set FRT as it is convenient to calculate the wage.
Example: (0.1) → 6 minutes, (0.2) → 12 minutes
[Labor cost per hour] x [FRT] = [Wage]
- FRT is set with a hand tool.
- Service items and FRT can be subject to change depending on development of tools and service equipment and improvement in service procedure.

Work procedure

- As the work procedure is set with the work time according to the method in the separate Service Manual, refer to this Manual as required.
- Work methods permitting servicing in the shortest time still permitting assurance of safe work and product warranty are used for the setting of service items not listed in the Service Manual.
- Work basically is to be performed by one person, and when two or more people are required, setting is done as the total time for the number of people.
- The set value for the technological level of the workers uses a person with three years of experience in the repair of Honda products as the standard.
- Special tools and service equipment used to set FRT are those specified or recommended in Service Manual.

Service item whose FRT is not presented

- Accessories and service parts that are not listed to use in this manual.
 - Locations with little aging deterioration or breakage during normal use.
 - Service work that can be finished by one touch.
 - Service work that is seldom done (i.e. extremely small causes of trouble and service frequency).
 - Products and parts whose location for installation differs according to its status of use and application.
- * When FRT is not presented, please calculate wages based on appropriate actual work time.

Operation not included of FRT

- Oil and coolant water draining, Waiting time for warming up operation and etc..
- Additional operation that involves removal/installation of standard exterior equipment.
- Indirect time spent for service by visiting the customer, trade-in, and delivery.
- Indirect time required for ordering and delivery of parts.
- Cost for grease, adhesive agent, etc. used for service work.

**Explanation of FRT by using an example
(The example may differ from the actual presented items)**

Ref. No.	L.O.N.	(Relative ref. Number) Description	F.R.T.
①	1111L1	④ VALVE, INTAKE4.1	②
②		⑧ • NOTE: OHV type	⑦
③	1111L1A	⑤ • Includes: Engine removal and installation One head (intake all) add1.4	

- ① Reference No. of the illustration of part that shows location of the replacement work.
- ② FRT is an abbreviation of Flat Rate Time indicating the standard service time required for the replacement.
- ③ LON is an abbreviation of Labor Operation Number, and it is a classification of the service items by the work unit code.

The same operation code is used regardless of the models.

Standard operation is indicated with 6 digits code, and additional operation is indicated with 7 digits code.

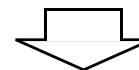
- ④ Indicating the intake valve replacement and FRT4.1.
- ⑤ Indicating FRT1.4 that will be added when additional operation (whole intake side of one cylinder head) is done in association with intake valve replacement.

- ⑥ Indicating work condition or application condition of the service item.
- ⑦ Indicating work contents that are included in the service item.
- ⑧ Indicating a reference No. whose operation and time are the same as FRT4.1 for the intake valve.

(The application range is limited to the service items without an LON setting within a same block.)

**How to refer to the service item by using the sample
(intake valve replacement)**

Open to the page of the block where the intake valve's spare part illustration is shown.



Look for the intake valve illustration, and refer to the service item and FRT that agree with the reference No.

Indication mark for the listing of service items that continues to the following page

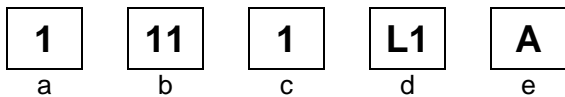
Ref. No.	L.O.N.	(Relative ref. Number) Description	F.R.T.
2	1111L1	VALVE, INTAKE	4.1
	.	.	.
	.	.	.

+
Mark indicated at the last line.

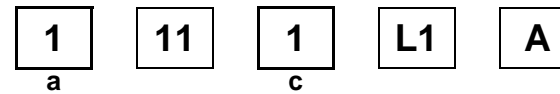
Indication of the block with no setting of FRT

Ref. No.	L.O.N.	(Relative ref. Number) Description	F.R.T.
NO INFORMATION			

• LON code system



- a) Category code..... Engine
- b) Location/function code Engine upper
- c) Operation code..... Replace
- d) Operation sequence number (Unit code can be shown with alphabet)
..... Intake valve
(No regular rule of code)
- e) Additional code One head (intake all)
(No regular rule of code)



a) Category codes and classification

Code	Category
1	Engine
2	Power drive
3	Fuel & Exhaust
4	Frame & Body
5	Steering
6	Electrical
7	Axle & Brake
8	Control system
9	-
0	Attachments

c) Operation codes and classification

Code	Operation category
1	Replace, Removal/Installation, Change
2	Overhaul
3	Adjust, Rotation
4	(Paint-related work: Top-coat)
5	Test, Inspect/diagnose, Measurement
6	(Overhaul-related work: Rebore)
7	(Overhaul-related work: Reseal)
8	(Resurface)
9	(Paint-related work: Refinish)
0	Repair, Cleaning, Air bleeding

Major service items without using spare parts

- (1) Removal/Installation, (2) Adjustment,
(3) Inspection/Masurement, (4) Overhaul, (5) Other work

E: Engine, T: Transmission, D: Drive system,
B: Body and related parts

(1) Removal/Installation

Set with the parts configuration in the status of being removed from the product.

	LON	DESCRIPTION	FRT
E	1001A2	ENGINE-REMOVAL/INSTALLATION	0.8
B	6221E2	INVERTER UNIT-REMOVAL/INSTALLATION	0.5

(2) Adjustment

	LON	DESCRIPTION	FRT
E	1113A1	VALVE CLEARANCE-ADJUSTMENT NOTE: For 1 product	1.0
	3113A2	CARBURETOR IDLE-ADJUSTMENT	0.2

(3) Inspection, Measurement, Cleaning

	LON	DESCRIPTION	FRT
E	1105A0	ENGINE OIL-INSPECTION	0.1
	3120A0	AIR CLEANER-CLEANING INCLUDES: Air cleaner-inspection	0.2
	3130A0	SPARK ARRESTER-CLEANING INCLUDES: Spark arrester-inspection	0.3
	6140A0	SPARK PLUG-ADJUSTMENT/CLEANING INCLUDES: Spark plug check NOTE: For 1 product	0.1

(4) Overhaul

Work condition: The required Measurements, inspections, adjustments, and cleaning/washing of each part are performed, including the main body removal/installation work and the replacement of defective parts.

	LON	DESCRIPTION	FRT
E	3112A0	CARBURETOR-OVERHAUL INCLUDES: All necessary adjustment	0.6

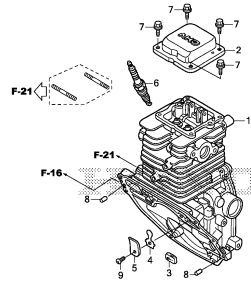
(5) Other work

	LON	DESCRIPTION	FRT
E	1101E1	ENGINE OIL-CHANGE INCLUDES: Engine oil-inspection	0.1

ENGINE GROUP

E-3

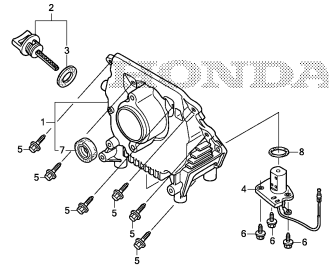
CYLINDER BARREL



Z403C000

E-5

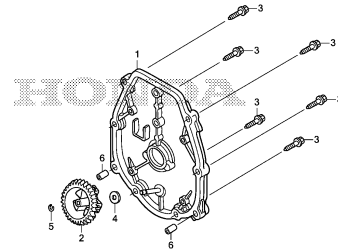
OIL CASE



Z403E000

E-6

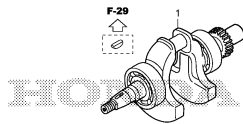
CRANKCASE COVER



Z403E000

E-7

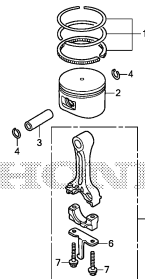
CRANKSHAFT



Z403C000

E-8

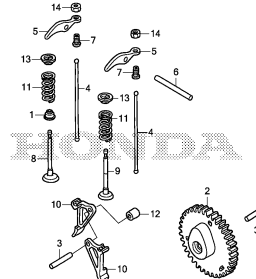
PISTON/CONNECTING ROD



Z403E000

E-9

CAMSHAFT



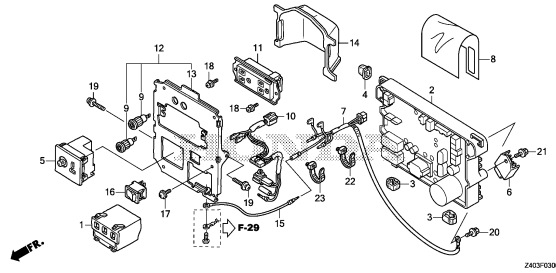
Z403E000

2

FRAME GROUP

F-3

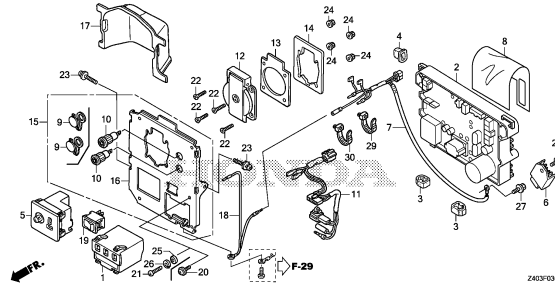
CONTROL PANEL(1)



Z403F0300

F-3-1

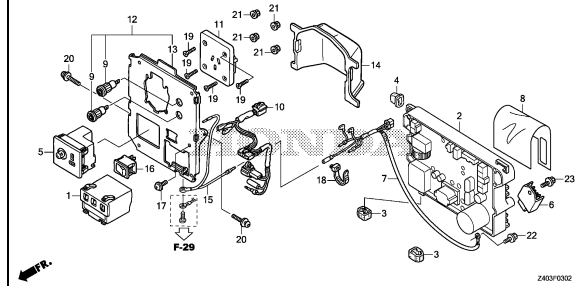
CONTROL PANEL(2)



Z403F0301

F-3-2

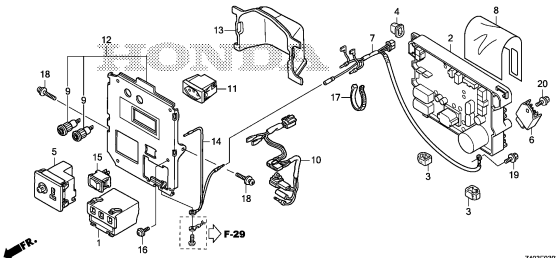
CONTROL PANEL(3)



Z403F0302

F-3-3

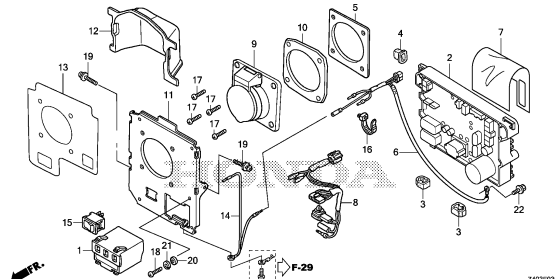
CONTROL PANEL(4)



Z403F0303

F-3-4

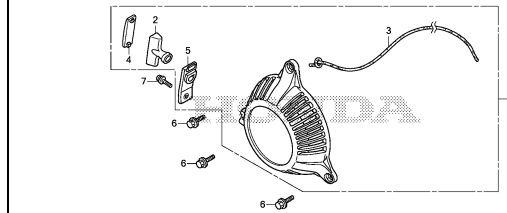
CONTROL PANEL(5)



Z403F0304

F-9

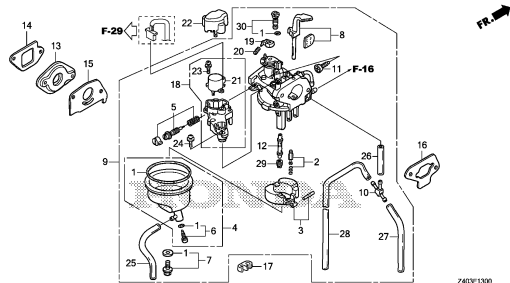
RECOIL STARTER



Z403F0900

F-13

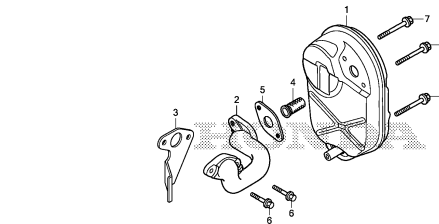
CARBURETOR



Z403F1300

F-15

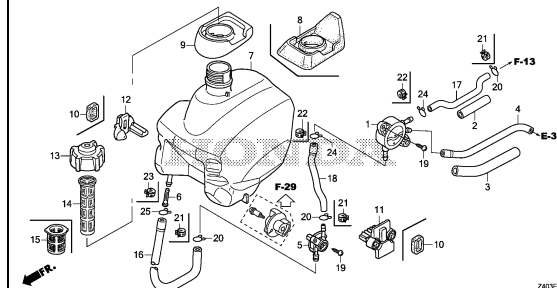
MUFFLER



Z403F1500

F-16

FUEL TANK

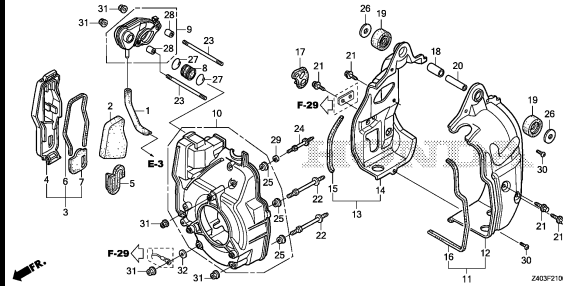


Z403F1600

FRAME GROUP

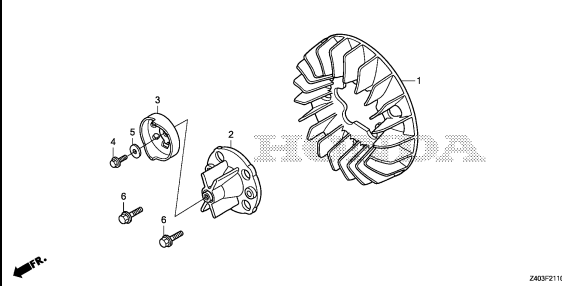
F-21

AIR CLEANER/SHROUD



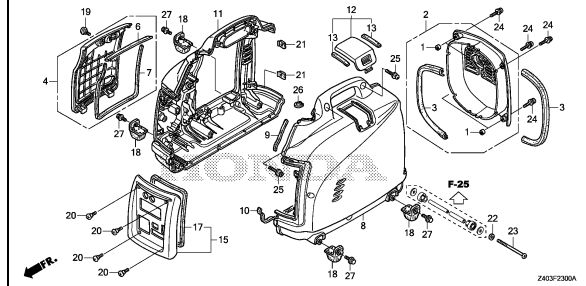
F-21-10

COOLING FAN



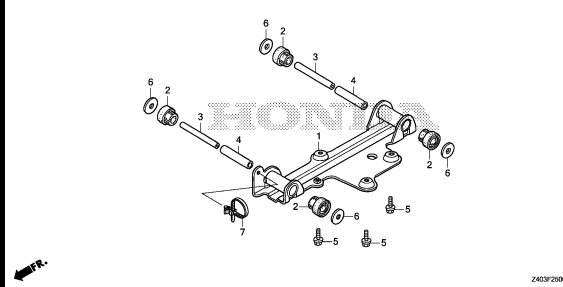
F-23

FRONT COVER/SIDE COVER



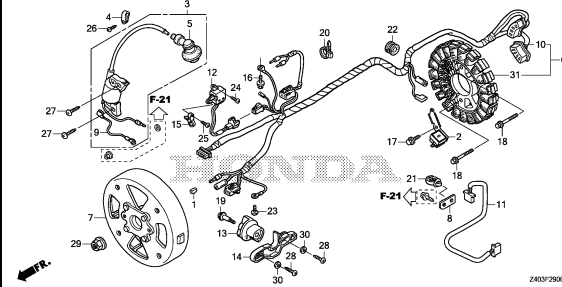
F-25

ENGINE BED



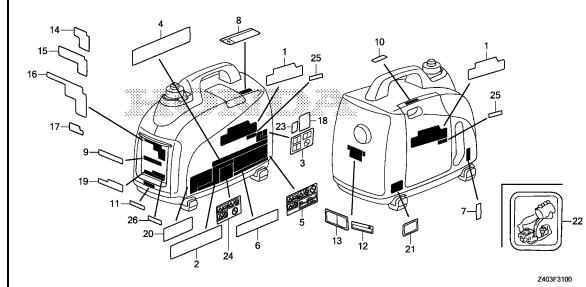
F-29

IGNITION COIL/GENERATOR



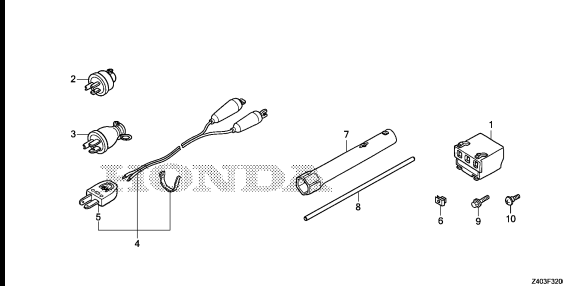
F-31

LABEL



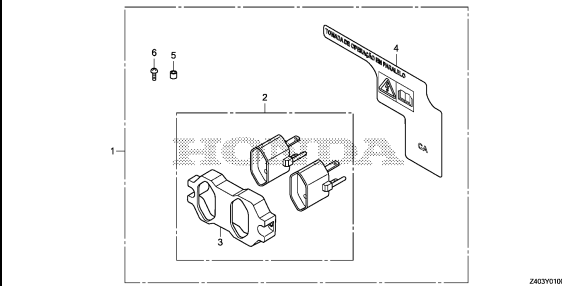
F-32

TOOL/OTHER PARTS



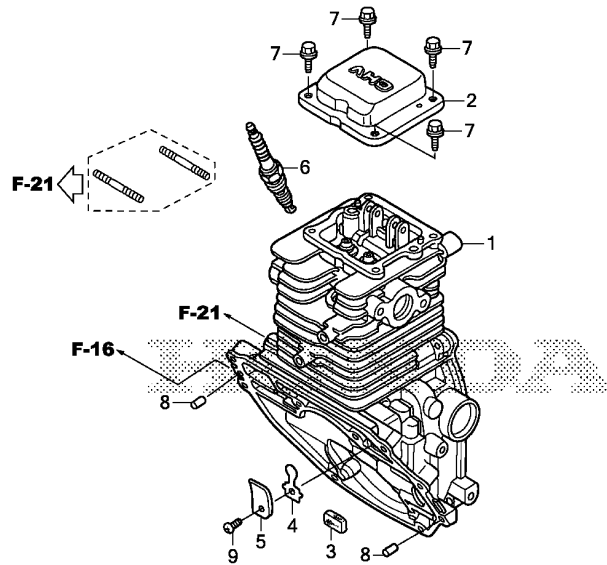
FOP-1

CONSENT KIT



E-3

CYLINDER BARREL

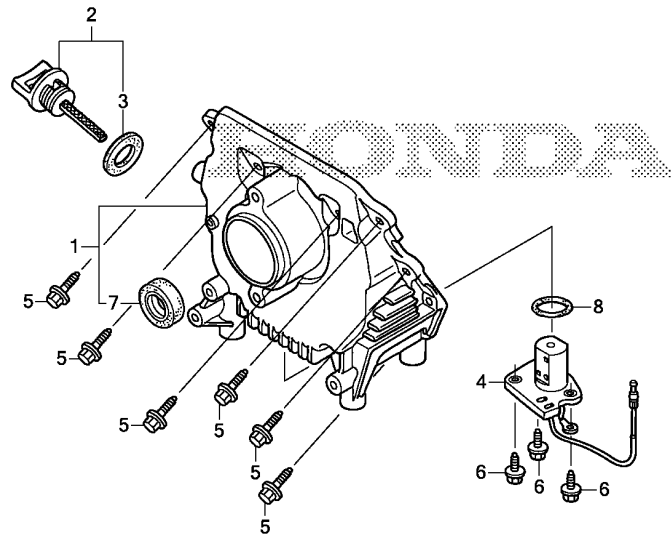


Ref. No.	L.O.N.	(Relative ref. Number) Description	F.R.T.
1	1101A0	BARREL, CYLINDERINCLUDES: Engine removal and installation	2.8
2	1111D5	CYLINDER HEAD COVER AND/OR PACKINGINCLUDES: Engine removal and installation	0.9
3	1111E5	FILTER, BREATHERINCLUDES: Engine removal and installation	1.4
4	1171A8	VALVE, OIL OUTLETINCLUDES: Engine removal and installation	1.4
6	6141C1	PLUG, SPARKINCLUDES: Spark plug check	0.1

Ref. No.	Part No.	Description	Reqd. QTY	Serial No.	Parts catalogue code
			EU 10i T1		
1	12100-ZM7-425	BARREL COMP., CYLINDER	1		
2	12311-ZM7-010	COVER, HEAD	1		
3	12367-ZM7-000	FILTER, BREATHER	1		
4	15571-ZM7-003	VALVE, OIL OUTLET	1		
5	15572-ZM7-000	PLATE, STOPPER	1		
6	31914-Z8Y-003	PLUG, SPARK(LR4C-E)(NGK)	1		
7	90003-892-000	BOLT, FLANGE, 5X12	4		
8	91101-Z0G-003	ROLLER, 6X14.8	2		
9	93500-03005-0A	SCREW, PAN, 3X5	1		

E-5

OIL CASE



Z403E0500

Ref. No.	L.O.N.	(Relative ref. Number) Description	F.R.T.
1	1101H1	OIL CASE AND/OR PACKINGINCLUDES: Engine removal and installation	1.5
4	6151E8	SWITCH, OIL LEVELINCLUDES: Engine removal and installation	0.9
7	1101E4	OIL SEAL, CRANKSHAFT :FRONT .. .INCLUDES: Engine removal and installation	1.5

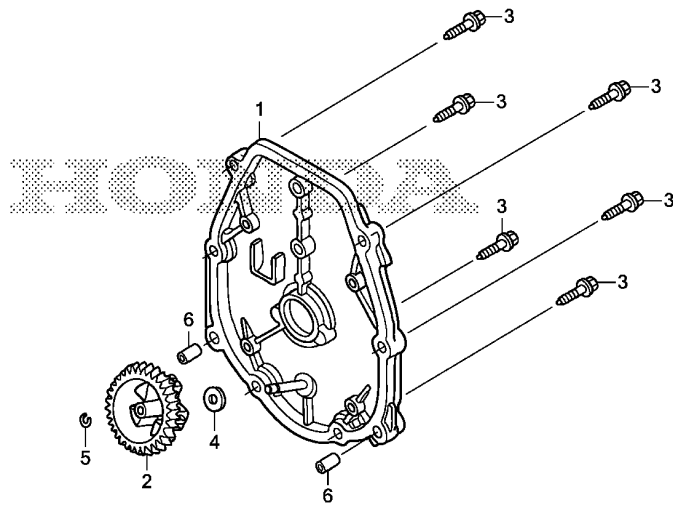
Ref. No.	Part No.	Description	Reqd. QTY		Serial No.	Parts catalogue code
			EU	10i		
1	11300-ZM7-415	CASE ASSY., OIL	1			
2	15600-ZDF-000	CAP ASSY., OIL FILLER	1			
3	15625-ZOT-800	PACKING, OIL FILLER CAP	1			
4	35480-ZM7-D02	SWITCH ASSY., OIL LEVEL	1			
5	90006-ZM7-000	BOLT, FLANGE, 5X23	8			
6	90012-896-750	BOLT, FLANGE, 5X14	3			
7	91202-HC5-003	OIL SEAL, 17X27X5 (ARAI)	1			
8	91301-ZM7-003	O-RING, 34.6X2.5	1			

2

FR.

E-6

CRANKCASE COVER



Z403E0600

Ref. No.	L.O.N.	(Relative ref. Number) Description	F.R.T.
1	1101F1	COVER, CRANKCASEINCLUDES: Engine removal and installation	1.5
2	1161A7	HOLDER, GOVERNOR WEIGHTINCLUDES: Engine removal and installation	1.5

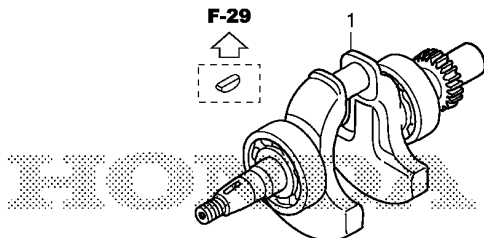
Ref. No.	Part No.	Description	Reqd. QTY	Serial No.	Parts catalogue code
			EU 10i T1		
1	11340-ZM7-D02	COVER COMP., CRANKCASE SIDE	1		
2	16512-ZM7-D00	HOLDER, GOVERNOR WEIGHT	1		
3	90006-ZM7-000	BOLT, FLANGE, 5X23	6		
4	90441-ZM7-000	WASHER, 4.2X13	1		
5	90602-ZM7-000	CLIP, GOVERNOR HOLDER	1		
6	94301-06100	DOWEL PIN, 6X10	2		

E-7

CRANKSHAFT

Ref. No.	L.O.N.	(Relative ref. Number) Description	F.R.T.
----------	--------	------------------------------------	--------

1	1101F0	CRANKSHAFT INCLUDES: Engine removal and installation	2.2
---	--------	---	-----



Z403E0700

Ref. No.	Part No.	Description	Reqd. QTY	Serial No.	Parts catalogue code
----------	----------	-------------	-----------	------------	----------------------

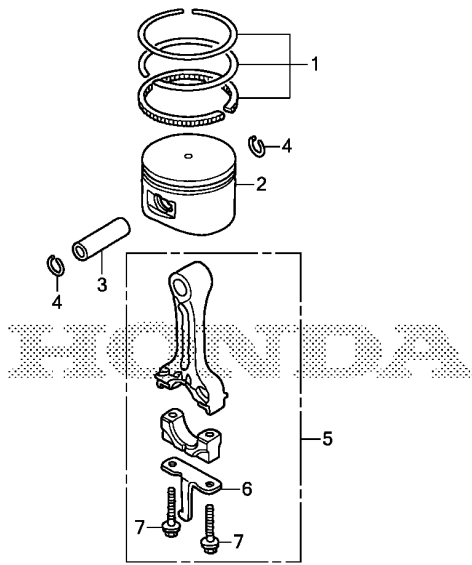
1	13310-ZM7-D01	CRANKSHAFT COMP.	1		
---	---------------	-----------------------	---	--	--

2

FR.

E-8

PISTON/CONNECTING ROD



←FR.

Z403E0800

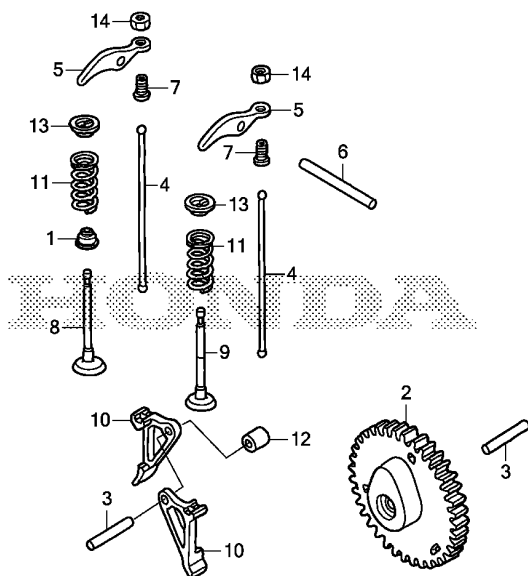
Ref. No.	L.O.N.	(Relative ref. Number) Description	F.R.T.
2	1111R1	(1,3,5) PISTON AND/OR RING SET AND/OR BEARING AND/OR RODINCLUDES: Engine removal and installation .INCLUDES: Inspection/Measurement/Cleaning	2.5

Ref. No.	Part No.	Description	Reqd. QTY	Serial No.	Parts catalogue code
			EU 10i T1		
1	13010-ZM7-D00	RING SET, PISTON(STD.)	1		
2	13101-ZDF-000	PISTON(STD.)	1	----- B2	
	13101-ZM7-010	1	----- 1013258	B,CL,F,G,HP1,LB,LL0,LL1,LT,RG,RH,RR0,RR1,SB,SK1,SS0,SS1,U,W
	13101-ZM7-800	1	----- 1013258	GW1
	13101-ZDF-000	1	1013259	----- B,CL,F,G,GW1,HP1,LB,LL0,LL1,LT,RG,RH,RR0,RR1,SB,SK1,SS0,SS1,U,W
3	13111-122-000	PIN, PISTON, 10X33	1		
4	13115-147-000	CLIP, PISTON PIN, 10MM	2		
5	13200-ZM7-800	ROD ASSY., CONNECTING	1		
6	13281-ZM7-010	DIPPER, CONNECTING ROD	1		
7	90001-ZM7-000	BOLT, CONNECTING ROD	2		

2

E-9

CAMSHAFT



Z403E0900

Ref. No.	L.O.N.	(Relative ref. Number) Description	F.R.T.
1	1111K2	SEAL, INTAKE VALVE STEMINCLUDES: Engine removal and installation .INCLUDES: Valve clearance adjustment	2.5
2	1111C2	CAMSHAFTINCLUDES: Engine removal and installation .INCLUDES: Valve clearance adjustment	1.3
4	1111L6	ROD, PUSH :INTAKEINCLUDES: Engine removal and installation .INCLUDES: Valve clearance adjustment	1.4
	1111L7	ROD, PUSH :EXHAUSTINCLUDES: Engine removal and installation .INCLUDES: Valve clearance adjustment	1.4
	1111L8	ROD, PUSH :BOTHINCLUDES: Engine removal and installation .INCLUDES: Valve clearance adjustment	1.5

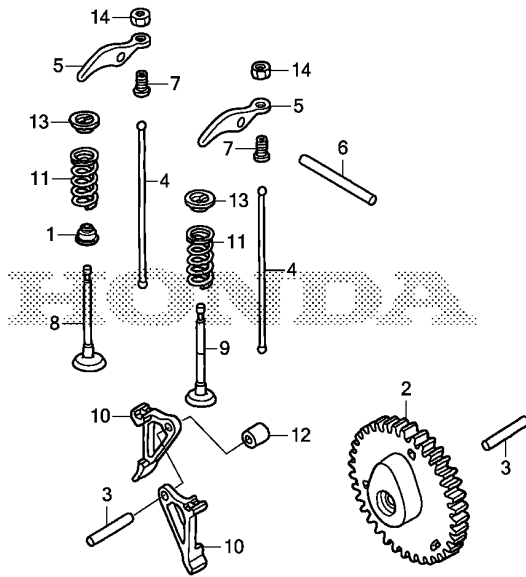
Ref. No.	Part No.	Description	Reqd. QTY		Serial No.	Parts catalogue code
			EU	10i		
				T1		
1	12209-ZM7-003	SEAL, VALVE STEM	1			
2	14100-ZM7-010	CAMSHAFT ASSY.	1		B, B2, CL, F, G, GW1, LB, LLO, LL1, LT, RG, RH, RRO, RR1, SB, SK1, SSO, SS1, U, W	
	14100-ZM7-D70	1		HP1	
3	14126-Z0G-003	ROLLER(5X29.8)	2			
4	14410-ZM7-000	ROD, PUSH	2			
5	14431-ZM7-000	ARM, VALVE ROCKER	2			
6	14435-ZM7-003	ROLLER(4X37.8)	1			
7	14451-ZM7-000	PIVOT, ROCKER ARM	2			
8	14711-ZM7-000	VALVE, IN.	1		B, CL, F, G, GW1, HP1, LB, LLO, LL1, LT, RG, RH, RRO, RR1, SB, SK1, SSO, SS1, U, W	
	14711-ZM7-010	1		B2	
9	14721-ZM7-000	VALVE, EX.	1		B, CL, F, G, GW1, HP1, LB, LLO, LL1, LT, RG, RH, RRO, RR1, SB, SK1, SSO, SS1, U, W	
	14721-ZM7-010	1		B2	
10	14731-ZM7-013	LIFTER, VALVE	2			
11	14751-ZM7-000	SPRING, VALVE	2			
12	14754-ZM7-000	COLLAR, LIFTER	1			
13	14771-ZM3-010	RETAINER, VALVE SPRING	2			
14	90206-KM3-000	NUT, TAPPET ADJUSTING	2			

2

FR.

E-9

CAMSHAFT



← MFR.

Z403E0900

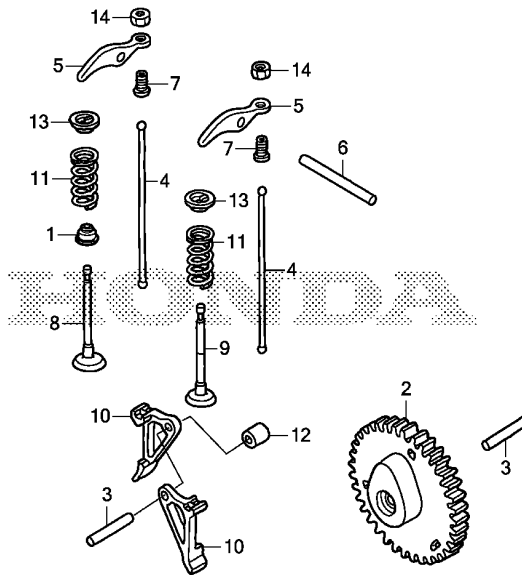
Ref. No.	L.O.N.	(Relative ref. Number) Description	F.R.T.
5	1111A2	ARM, ROCKER :INTAKEINCLUDES: Engine removal and installation .INCLUDES: Valve clearance adjustment	1.2
	1111A2A	.Replace exhaust rocker arm add	0.1
	1111A1	ARM, ROCKER :EXHAUSTINCLUDES: Engine removal and installation .INCLUDES: Valve clearance adjustment	1.2
	1111A1A	.Replace intake rocker arm add	0.1
8	1111L1	VALVE, INTAKEINCLUDES: Engine removal and installation .INCLUDES: Valve clearance adjustment	2.6
	1111L1E	.Replace intake and exhaust all add	0.2
9	1111L0	VALVE, EXHAUSTINCLUDES: Engine removal and installation .INCLUDES: Valve clearance adjustment	2.6

+



E-9

CAMSHAFT



Z403E0900

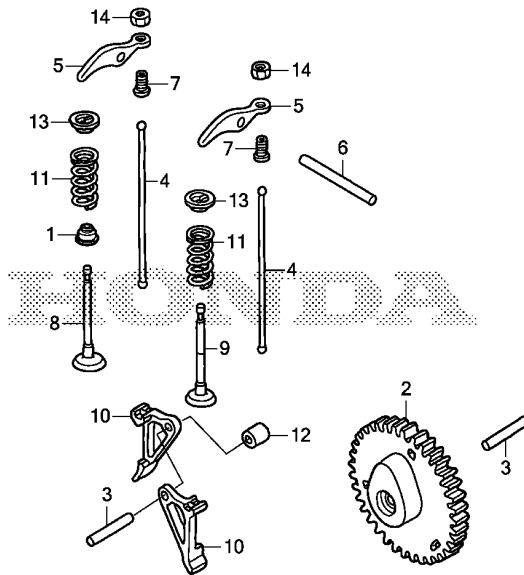
Ref. No.	L.O.N.	(Relative ref. Number) Description	F.R.T.
+ 9	1111L0E	.Replace intake and exhaust all add	0.2
10	1111L9	LIFTER, VALVE :INTAKE	1.4
		.INCLUDES: Engine removal and installation .INCLUDES: Valve clearance adjustment	
	1111M0	LIFTER, VALVE :EXHAUST	1.4
		.INCLUDES: Engine removal and installation .INCLUDES: Valve clearance adjustment	
	1111M1	LIFTER, VALVE :BOTH	1.4
		.INCLUDES: Engine removal and installation .INCLUDES: Valve clearance adjustment	
11	1111P3	SPRING, VALVE :INTAKE	2.5
		.INCLUDES: Engine removal and installation .INCLUDES: Valve clearance adjustment	
	1111P3A	.Replace intake and exhaust all add	0.1
+ 11	1111P4	SPRING, VALVE :EXHAUST	2.5

2

FR.

E-9

CAMSHAFT



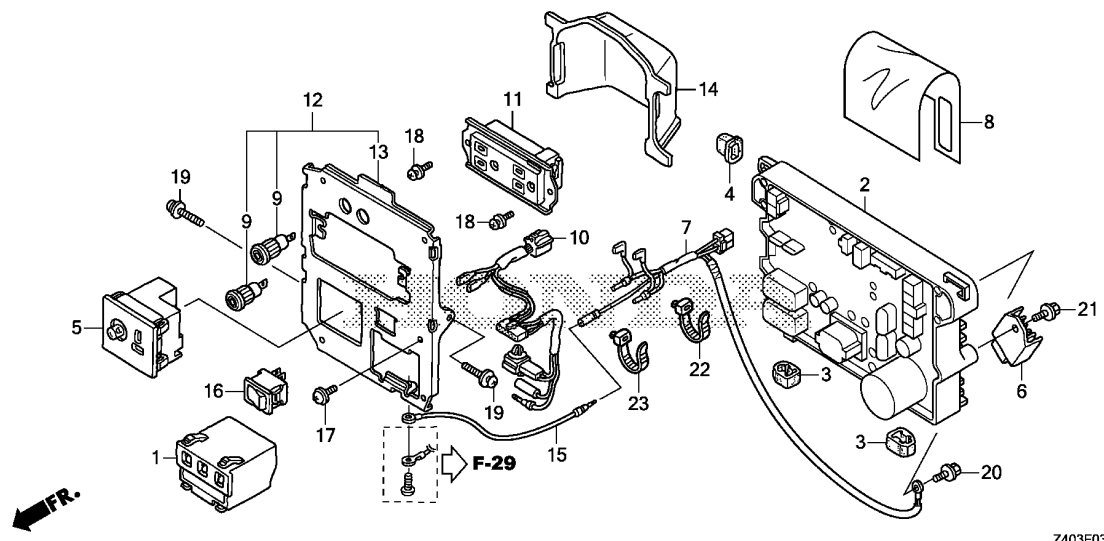
← MFR.

Z403E0900

Ref. No.	L.O.N.	(Relative ref. Number) Description	F.R.T.
+11		.INCLUDES: Engine removal and installation .INCLUDES: Valve clearance adjustment 1111P4A .Replace intake and exhaust all add	0.1

F-3

CONTROL PANEL(1)



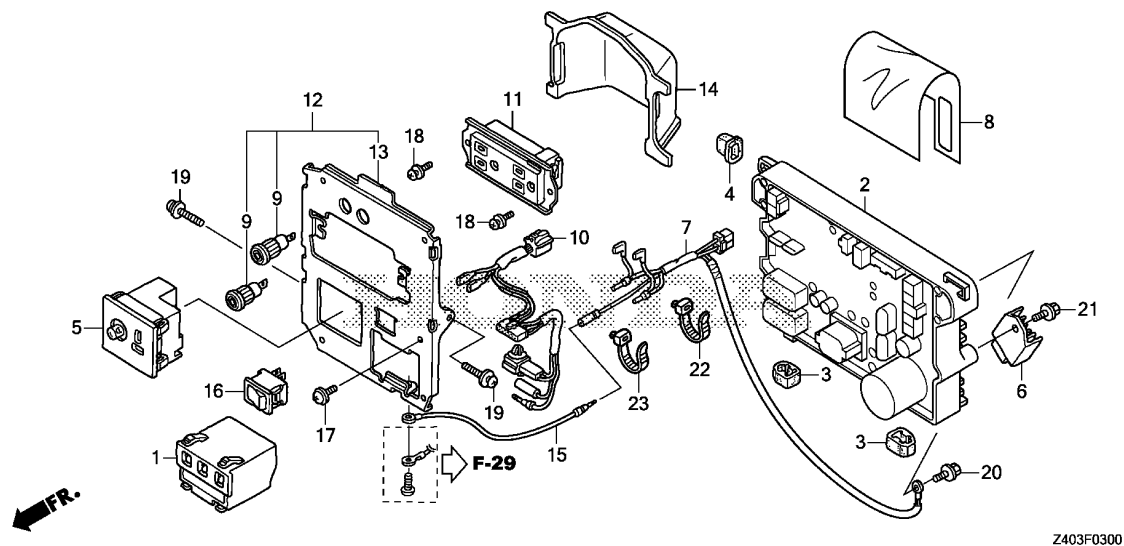
Ref. No.	L.O.N.	(Relative ref. Number) Description	F.R.T.
1	6201D0	SPARK UNIT, GENERATOR	0.4
2	6221F7	INVERTER UNIT, GENERATOR	0.8
3	6221J7	RUBBER A, INVERTER	0.5
		.NOTE: Same time for two units	
4	6221J8	RUBBER B, INVERTER	0.5
5	6221A9	CONSENT, DIRECT CURRENT	0.4
6	6201A8	RECTIFIER, GENERATOR (CONTROL PANEL)	0.3
7	6111D3	HARNESS, SUB WIRE	0.6
9	6221P3	SOCKET, COMPOSITE	0.3
		.NOTE: Same time for two units	
10	6111B9	HARNESS, CONTROL WIRE	0.5
11	6221D5	RECEPTACLE/CONSENT, CONTROL PANEL	0.4
12		(13)	
	6221N9	PANEL, GENERATOR CONTROL	0.6
14	4131N7	COVER, CONTROL PANEL	0.2
16	6151E5	SWITCH, AUTO THROTTLE	0.3

Z403F0300

Ref. No.	Part No.	Description	Reqd. QTY		Serial No.	Parts catalogue code
			EU	10i		
1	30400-ZT3-C02	SPARK UNIT	1	-----	-----	LL0,LL1,LT,RH,RR0,RR1,SS0,SS1
2	31310-ZT3-P12	INVERTER UNIT	1	-----	-----	LL0,LL1,LT
	31310-ZT3-E62	1	-----	-----	RH
	31310-ZT3-D22	1	-----	-----	RRO
	31310-ZT3-F62	1	-----	-----	RR1,SS0,SS1
3	31319-ZT3-000	RUBBER A, INVERTER	2	-----	-----	LL0,LL1,LT,RH,RR0,RR1,SS0,SS1
4	31324-ZT3-000	RUBBER B, INVERTER	1	-----	-----	LL0,LL1,LT,RH,RR0,RR1,SS0,SS1
5	31460-ZT3-C01	CONSENT COMP., D.C.	1	-----	-----	LL0,LL1,LT,RH,RR0,RR1,SS0,SS1
6	31710-ZS9-A02	RECTIFIER ASSY.	1	-----	-----	LL0,LL1,LT,RH,RR0,RR1,SS0,SS1
7	32105-ZT3-L30	HARNESS ASSY., SUB WIRE	1	-----	-----	LL0
	32105-ZT3-E60	1	-----	-----	RH
	32105-ZT3-E70	1	-----	1041648	RRO,RR1,SS0,SS1
	32105-ZT3-P10	1	-----	1041929	LL1,LT
	32105-ZT3-E71	1	1041649	-----	RRO,RR1,SS0,SS1
	32105-ZT3-P11	1	1041930	-----	LL1,LT
8	32118-ZT3-P10	SHEET, WATER PROOF	1	-----	-----	LL0,LL1,LT,RH,RR0,RR1,SS0,SS1
9	32139-ZC3-G01	SOCKET, COMPOSITE	2	-----	-----	LL1,LT,RH,RR1,SS1
10	32150-ZT3-P11	HARNESS ASSY., CONTROL WIRE	1	-----	-----	LL0,LL1,LT
	32150-ZT3-E61	1	-----	-----	RH
	32150-ZT3-E81	1	-----	-----	RRO,RR1
	32150-ZT3-E71	1	-----	-----	SS0,SS1
11	32330-ZT3-C31	CONSENT ASSY.(15A/125V)	1	-----	-----	LL0,LL1,LT
	32330-ZT3-C71	CONSENT ASSY.(250V/10A)	1	-----	-----	RH,RR0,RR1,SS0,SS1
12	32345-ZT3-C01	PANEL COMP., CONTROL	1	-----	-----	LL1,LT,RH,RR1,SS1
13	32346-ZT3-C01	PANEL, CONTROL	1	-----	-----	LL0,LL1,LT,RH,RR0,RR1,SS0,SS1
14	32351-ZT3-000	COVER, CONTROL PANEL	1	-----	-----	LL0,LL1,LT,RH,RR0,RR1,SS0,SS1
15	32601-ZT3-C70	CABLE, EARTH	1	-----	-----	RH,RR0,RR1,SS0,SS1

F-3

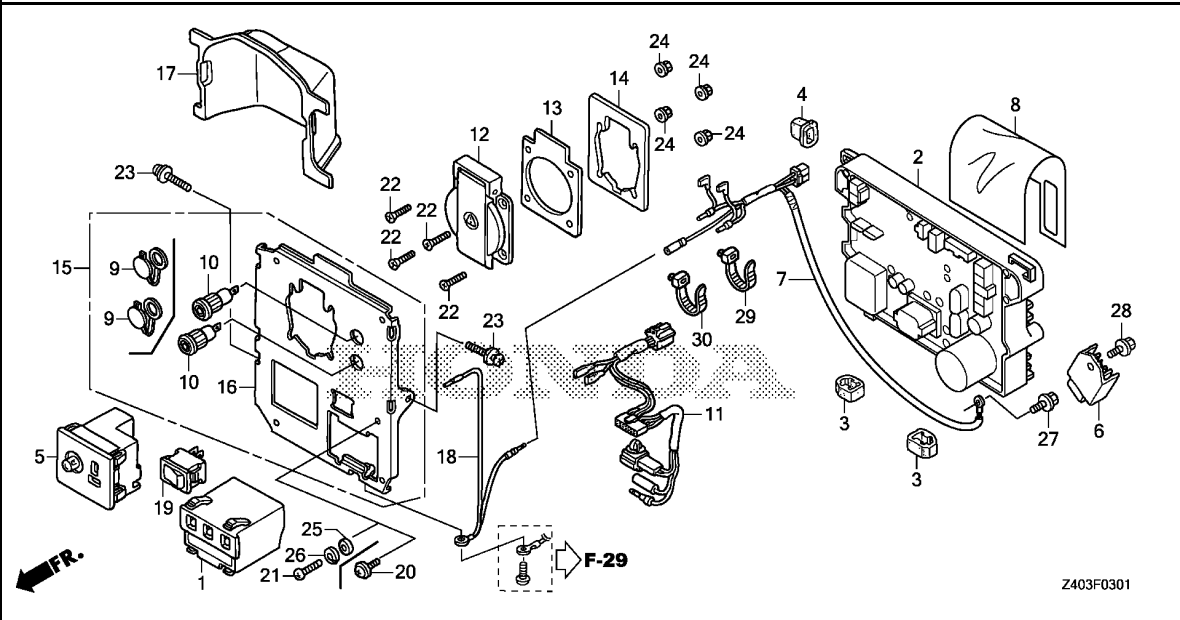
CONTROL PANEL(1)



Ref. No.	Part No.	Description	Reqd. QTY	Serial No.	Parts catalogue code
			EU 10i T1		
16	36214-ZS9-A01	SWITCH COMP., AUTO-THROTTLE	1	----- 1037305	LL0,LL1,LT,RH,RR0,RR1,SS0,SS1
	36214-Z11-A01	SWITCH COMP., AUTO-THROTTLE (OTAX)	1	1037306 -----	LL0,LL1,LT,RH,RR0,RR1,SS0,SS1
17	90102-899-003	SCREW, PAN, 5X12	1	-----	LL0,LL1,LT,RH,RR0,RR1,SS0,SS1
18	93891-04006-00	SCREW-WASHER, 4X6	2	-----	LL0,LL1,LT,RH,RR0,RR1,SS0,SS1
19	93891-05020-07	SCREW-WASHER, 5X20	2	-----	LL0,LL1,LT,RH,RR0,RR1,SS0,SS1
20	95701-06010-08	BOLT, FLANGE, 6X10	1	-----	LL0,LL1,LT,RH,RR0,RR1,SS0,SS1
21	95701-06012-08	BOLT, FLANGE, 6X12	1	-----	LL0,LL1,LT,RH,RR0,RR1,SS0,SS1
22	91560-SE0-003	BAND A, HARNESS(NATURAL)	1	-----	RR0,RR1,SS0,SS1
23	91560-SE0-003	BAND A, HARNESS(NATURAL)	1	-----	RH,RR0,RR1,SS0,SS1

F-3-1

CONTROL PANEL(2)



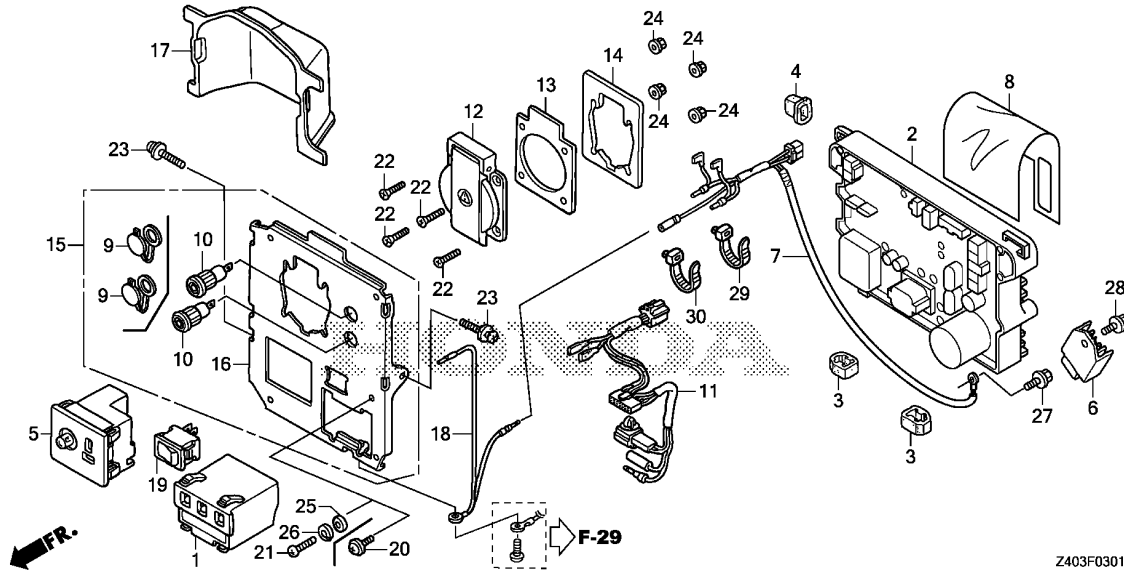
Ref. No.	L.O.N.	(Relative ref. Number) Description	F.R.T.
1	6201D0	SPARK UNIT, GENERATOR	0.4
2	6221F7	INVERTER UNIT, GENERATOR	0.8
3	6221J7	RUBBER A, INVERTER	0.5
		.NOTE: Same time for two units	
4	6221J8	RUBBER B, INVERTER	0.5
5	6221A9	CONSENT, DIRECT CURRENT	0.4
6	6201A8	RECTIFIER, GENERATOR (CONTROL PANEL)	0.3
7	6111D3	HARNESS, SUB WIRE	0.6
10	6221P3	SOCKET, COMPOSITE	0.3
		.NOTE: Same time for two units	
11	6111B9	HARNESS, CONTROL WIRE	0.5
12	6221D5	RECEPTACLE/CONSENT, CONTROL PANEL	0.4
15	6221N9	PANEL, GENERATOR CONTROL	0.6
17	4131N7	COVER, CONTROL PANEL	0.2
19	6151E5	SWITCH, AUTO THROTTLE	0.3

3

Ref. No.	Part No.	Description	Reqd. QTY		Serial No.	Parts catalogue code
			EU	10i		
1	30400-ZT3-C02	SPARK UNIT	1			B,CL,F,G,GW1,RG,SK1,W
2	31310-ZT3-E62	INVERTER UNIT	1			B,CL,F,G,GW1,RG,W
	31310-ZT3-F62	1			SK1
3	31319-ZT3-000	RUBBER A, INVERTER	2			B,CL,F,G,GW1,RG,SK1,W
4	31324-ZT3-000	RUBBER B, INVERTER	1			B,CL,F,G,GW1,RG,SK1,W
5	31460-ZT3-C01	CONSENT COMP., D.C.	1			B,CL,F,G,GW1,RG,SK1,W
6	31710-ZS9-A02	RECTIFIER ASSY.	1			B,CL,F,G,GW1,RG,SK1,W
7	32105-ZT3-E60	HARNESS ASSY., SUB WIRE	1			B,CL,F,G,GW1,RG,W
	32105-ZT3-E70	1	1041648		SK1
	32105-ZT3-E71	1	1041649		SK1
8	32118-ZT3-P10	SHEET, WATER PROOF	1			B,CL,F,G,GW1,RG,SK1,W
9	32138-Z07-E60	COVER, SOCKET	2			B,CL,F,G,GW1,W
10	32139-ZC3-G01	SOCKET, COMPOSITE	2			B,CL,F,G,GW1,RG,W
11	32150-ZT3-E61	HARNESS ASSY., CONTROL WIRE	1			B,CL,F,G,GW1,RG,W
	32150-ZT3-E71	1			SK1
12	32331-Z07-C90	RECEPTACLE(13A/250V)	1			B
	32331-Z25-A60	RECEPTACLE(16A-250V)	1			CL,G,RG
	32331-Z07-D50	RECEPTACLE(10/16A-250V)	1			F
	32331-Z25-640	RECEPTACLE(16A-250V)	1			GW1
	32331-ZT3-C60	RECEPTACLE(16A/250V)	1			SK1
	32331-ZC3-R40	RECEPTACLE(10A/250V)	1			W
13	32335-875-610	PACKING, RECEPTACLE	1			B,CL,F,G,GW1,RG,SK1,W
14	32336-ZC3-661	SEAL, CONSENT	1			RG,SK1
15	32345-ZT3-E61	PANEL COMP., CONTROL	1			B,CL,F,G,GW1,W
	32345-ZT3-A61	1			RG
16	32346-ZT3-C61	PANEL, CONTROL	1			SK1

F-3-1

CONTROL PANEL(2)



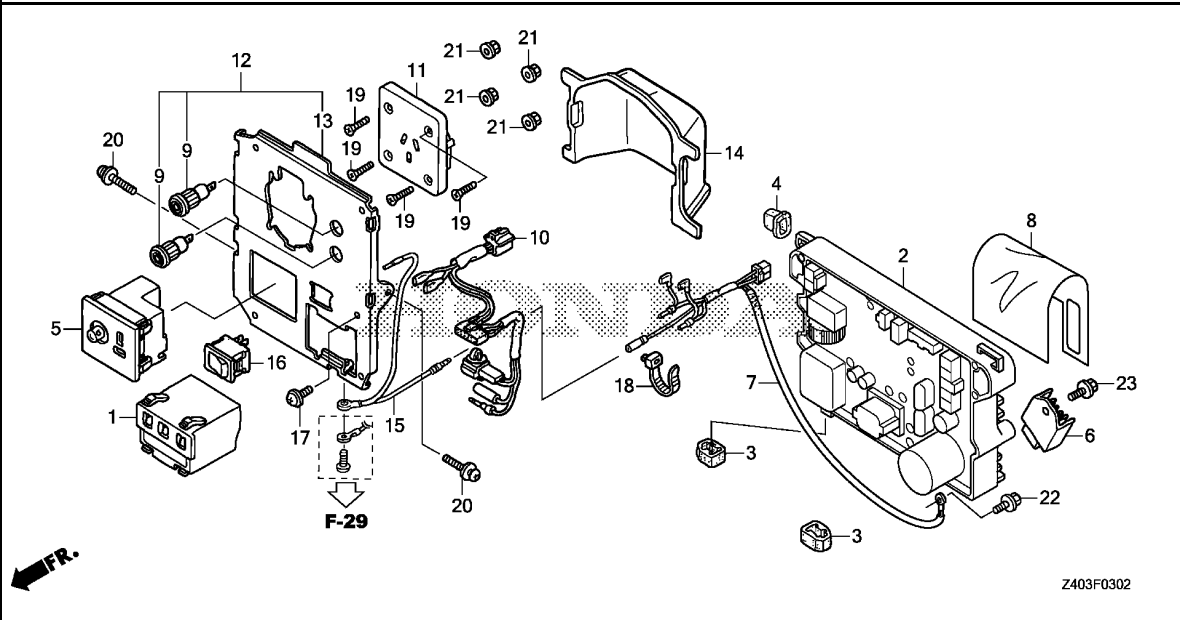
Z403F0301

Ref. No.	Part No.	Description	Reqd. QTY		Serial No.	Parts catalogue code
			EU	10i		
17	32351-ZT3-000	COVER, CONTROL PANEL	1			B,CL,F,G,GW1,RG,SK1,W
18	32601-ZT3-S21	CABLE, EARTH	1			B,CL,F,G,GW1,RG,SK1,W
19	36214-ZS9-A01	SWITCH COMP., AUTO-THROTTLE	1		1037305	B,CL,F,G,GW1,RG,SK1,W
	36214-Z11-A01	SWITCH COMP., AUTO-THROTTLE				
20	90102-899-003	SCREW, PAN, 5X12 (OTAX)	1		1037306	B,CL,F,G,GW1,RG,SK1,W
			1			SK1
21	93500-05016-3J	SCREW, PAN, 5X16	1			B,CL,F,G,GW1,RG,W
22	93600-04012-0G	SCREW, FLAT, 4X12	4			B,CL,F,G,GW1,RG,SK1,W
23	93891-05020-07	SCREW-WASHER, 5X20	2			B,CL,F,G,GW1,RG,SK1,W
24	94050-04000	NUT, FLANGE, 4MM	4			B,CL,F,G,GW1,RG,SK1,W
25	94101-05000	WASHER, PLAIN, 5MM	1			B,CL,F,G,GW1,RG,W
26	94111-05000	WASHER, SPRING, 5MM	1			B,CL,F,G,GW1,RG,W
27	95701-06010-08	BOLT, FLANGE, 6X10	1			B,CL,F,G,GW1,RG,SK1,W
28	95701-06012-08	BOLT, FLANGE, 6X12	1			B,CL,F,G,GW1,RG,SK1,W
29	91560-SE0-003	BAND A, HARNESS(NATURAL)	1			B,CL,F,G,GW1,RG,SK1,W
30	91560-SE0-003	BAND A, HARNESS(NATURAL)	1			SK1



F-3-2

CONTROL PANEL(3)



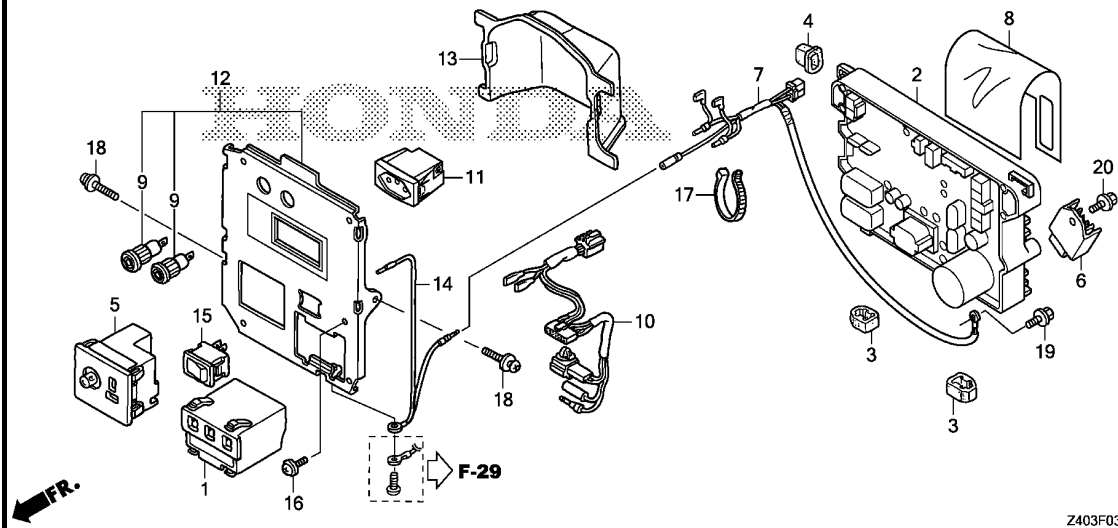
Ref. No.	L.O.N.	(Relative ref. Number) Description	F.R.T.
1	6201D0	SPARK UNIT, GENERATOR	0.4
2	6221F7	INVERTER UNIT, GENERATOR	0.8
3	6221J7	RUBBER A, INVERTER	0.5
		.NOTE: Same time for two units	
4	6221J8	RUBBER B, INVERTER	0.5
5	6221A9	CONSENT, DIRECT CURRENT	0.4
6	6201A8	RECTIFIER, GENERATOR (CONTROL PANEL)	0.3
7	6111D3	HARNESS, SUB WIRE	0.6
9	6221P3	SOCKET, COMPOSITE	0.3
		.NOTE: Same time for two units	
10	6111B9	HARNESS, CONTROL WIRE	0.5
11	6221J4	SOCKET, CONTROL PANEL	0.4
12	6221N9	PANEL, GENERATOR CONTROL	0.6
14	4131N7	COVER, CONTROL PANEL	0.2
16	6151E5	SWITCH, AUTO THROTTLE	0.3

Ref. No.	Part No.	Description	Reqd. QTY	Serial No.	Parts catalogue code
			EU 10i T1		
1	30400-ZT3-C02	SPARK UNIT	1	-----	U
2	31310-ZT3-E82	INVERTER UNIT	1	-----	U
3	31319-ZT3-000	RUBBER A, INVERTER	2	-----	U
4	31324-ZT3-000	RUBBER B, INVERTER	1	-----	U
5	31460-ZT3-C01	CONSENT COMP., D.C.	1	-----	U
6	31710-ZS9-A02	RECTIFIER ASSY.	1	-----	U
7	32105-ZT3-E80	HARNESS ASSY., SUB WIRE	1	1041993	U
	32105-ZT3-E81	1	1041994	U
8	32118-ZT3-P10	SHEET, WATER PROOF	1	-----	U
9	32139-ZC3-G01	SOCKET, COMPOSITE	2	-----	U
10	32150-ZT3-E81	HARNESS ASSY., CONTROL WIRE	1	-----	U
11	32332-Z07-C81	SOCKET(15A/250V)	1	-----	U
12	32345-ZT3-C61	PANEL COMP., CONTROL	1	-----	U
13	32346-ZT3-C61	PANEL, CONTROL	1	-----	U
14	32351-ZT3-000	COVER, CONTROL PANEL	1	-----	U
15	32601-ZT3-S21	CABLE, EARTH	1	-----	U
16	36214-ZS9-A01	SWITCH COMP., AUTO-THROTTLE	1	1037305	U
	36214-Z11-A01	SWITCH COMP., AUTO-THROTTLE (OTAX)	1	1037306	U
17	90102-899-003	SCREW, PAN, 5X12	1	-----	U
18	91560-SE0-003	BAND A, HARNESS(NATURAL)	1	-----	U
19	93600-04020-1G	SCREW, FLAT, 4X20	4	-----	U
20	93891-05020-07	SCREW-WASHER, 5X20	2	-----	U
21	94050-04000	NUT, FLANGE, 4MM	4	-----	U
22	95701-06010-08	BOLT, FLANGE, 6X10	1	-----	U
23	95701-06012-08	BOLT, FLANGE, 6X12	1	-----	U

3

F-3-3

CONTROL PANEL(4)

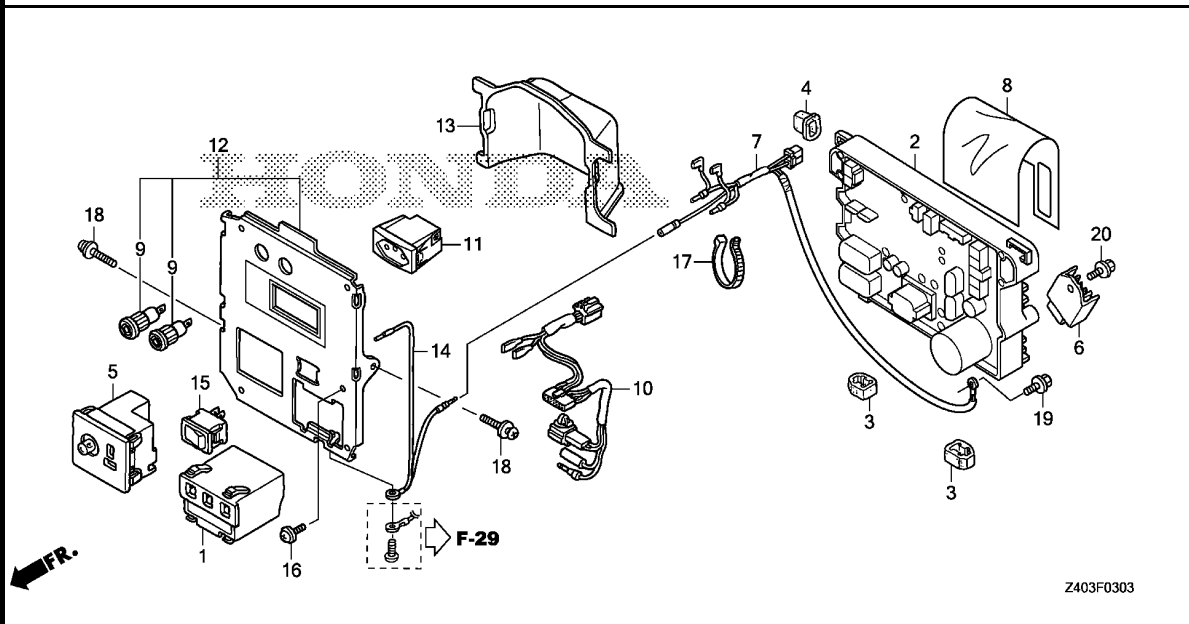


Ref. No.	L.O.N.	(Relative ref. Number) Description	F.R.T.
1	6201D0	SPARK UNIT, GENERATOR	0.4
2	6221F7	INVERTER UNIT, GENERATOR	0.8
3	6221J7	RUBBER A, INVERTER	0.5
		.NOTE: Same time for two units	
4	6221J8	RUBBER B, INVERTER	0.5
5	6221A9	CONSENT, DIRECT CURRENT	0.4
6	6201A8	RECTIFIER, GENERATOR (CONTROL PANEL)	0.3
7	6111D3	HARNESS, SUB WIRE	0.6
9	6221P3	SOCKET, COMPOSITE	0.3
		.NOTE: Same time for two units	
10	6111B9	HARNESS, CONTROL WIRE	0.5
11	6221D5	RECEPTACLE/CONSENT, CONTROL PANEL	0.4
12	6221N9	PANEL, GENERATOR CONTROL	0.6
13	4131N7	COVER, CONTROL PANEL	0.2
15	6151E5	SWITCH, AUTO THROTTLE	0.3

Ref. No.	Part No.	Description	Reqd. QTY		Serial No.	Parts catalogue code
			EU 10i T1			
1	30400-ZT3-C02	SPARK UNIT	1	-----	-----	LB,SB
2	31310-ZT3-P12	INVERTER UNIT	1	-----	-----	LB
	31310-ZT3-F62	1	-----	-----	SB
3	31319-ZT3-000	RUBBER A, INVERTER	2	-----	-----	LB,SB
4	31324-ZT3-000	RUBBER B, INVERTER	1	-----	-----	LB,SB
5	31460-ZT3-C01	CONSENT COMP., D.C.	1	-----	-----	LB,SB
6	31710-ZS9-A02	RECTIFIER ASSY.	1	-----	-----	LB,SB
7	32105-ZT3-U10	HARNESS ASSY., SUB WIRE	1	-----	1040279	SB
	32105-ZT3-W10	1	-----	1041200	LB
	32105-ZT3-U11	1	-----	1040280	SB
	32105-ZT3-W11	1	-----	1041201	LB
8	32118-ZT3-P10	SHEET, WATER PROOF	1	-----	-----	LB,SB
9	32139-ZC3-G01	SOCKET, COMPOSITE	2	-----	-----	LB,SB
10	32150-ZT3-P11	HARNESS ASSY., CONTROL WIRE	1	-----	-----	LB
	32150-ZT3-E71	1	-----	-----	SB
11	32330-Z07-W10	RECEPTACLE(20A/250V)	1	-----	-----	LB
	32330-ZT3-W10	RECEPTACLE(10A/250V)	1	-----	-----	SB
12	32345-ZT3-W11	PANEL COMP., CONTROL	1	-----	-----	LB,SB
13	32351-ZT3-000	COVER, CONTROL PANEL	1	-----	-----	LB,SB
14	32601-ZT3-W10	CABLE, EARTH	1	-----	-----	LB,SB
15	36214-ZS9-A01	SWITCH COMP., AUTO-THROTTLE	1	-----	1037305	LB,SB
	36214-Z11-A01	SWITCH COMP., AUTO-THROTTLE (OTAX)	1	-----	1037306	LB,SB
16	90102-899-003	SCREW, PAN, 5X12	1	-----	-----	LB,SB
17	91560-SE0-003	BAND A, HARNESS(NATURAL)	1	-----	-----	LB,SB
18	93891-05020-07	SCREW-WASHER, 5X20	2	-----	-----	LB,SB

F-3-3

CONTROL PANEL(4)



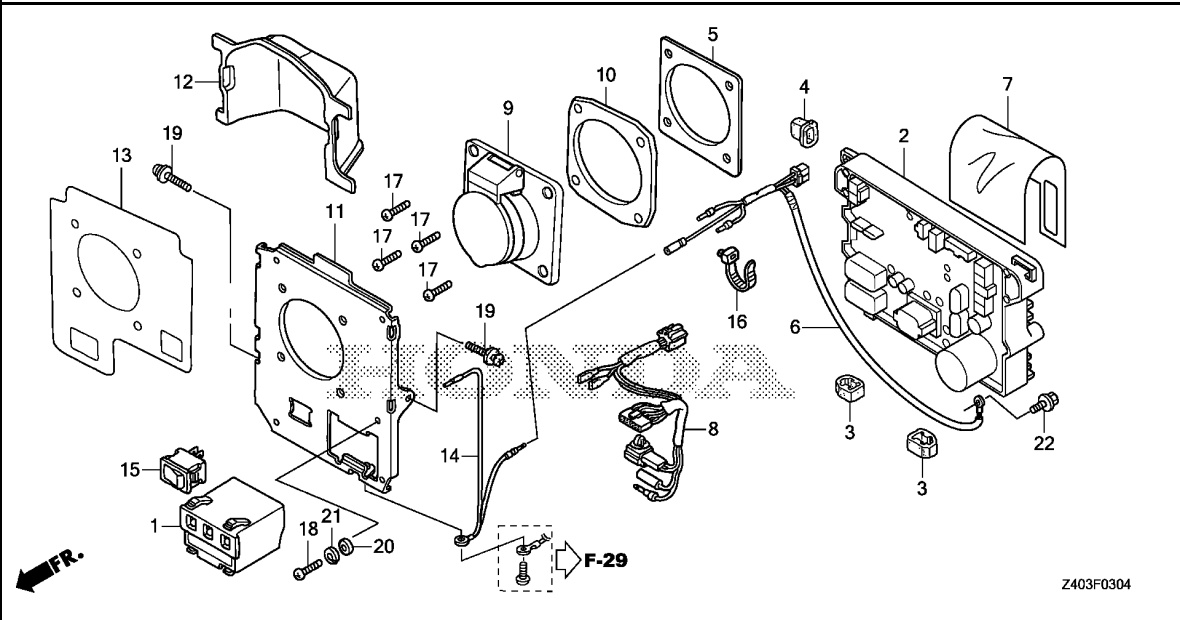
Z403F0303

Ref. No.	Part No.	Description	Reqd. QTY		Serial No.	Parts catalogue code
			EU	10i		

19	95701-06010-08	BOLT, FLANGE, 6X10	1	-----	-----	LB,SB
20	95701-06012-08	BOLT, FLANGE, 6X12	1	-----	-----	LB,SB

F-3-4

CONTROL PANEL(5)



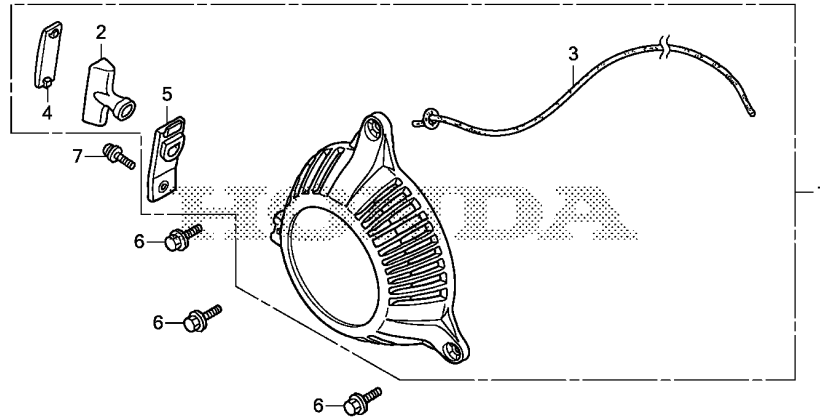
Ref. No.	L.O.N.	(Relative ref. Number) Description	F.R.T.
1	6201D0	SPARK UNIT, GENERATOR	0.4
2	6221F7	INVERTER UNIT, GENERATOR	0.8
3	6221J7	RUBBER A, INVERTER	0.5
.NOTE: Same time for two units			
4	6221J8	RUBBER B, INVERTER	0.5
6	6111D3	HARNESS, SUB WIRE	0.6
8	6111B9	HARNESS, CONTROL WIRE	0.5
9	6221D5	RECEPTACLE/CONSENT, CONTROL PANEL	0.4
11	6221N9	PANEL, GENERATOR CONTROL	0.6
12	4131N7	COVER, CONTROL PANEL	0.2
13	6221C5	MARK, CONTROL PANEL	0.6
15	6151E5	SWITCH, AUTO THROTTLE	0.3

Ref. No.	Part No.	Description	Reqd. QTY		Serial No.	Parts catalogue code
			EU	10i		
1	30400-ZT3-C02	SPARK UNIT	1	-----	-----	B2
2	31310-Z40-C91	INVERTER UNIT	1	-----	-----	B2
3	31319-ZT3-000	RUBBER A, INVERTER	2	-----	-----	B2
4	31324-ZT3-000	RUBBER B, INVERTER	1	-----	-----	B2
5	31426-Z39-C90	PLATE SET, CONSENT	1	-----	-----	B2
6	32105-Z40-C90	HARNESS ASSY., SUB WIRE	1	-----	-----	B2
7	32118-ZT3-P10	SHEET, WATER PROOF	1	-----	-----	B2
8	32150-Z40-C90	HARNESS ASSY., CONTROL WIRE	1	-----	-----	B2
9	32330-Z39-C90	RECEPTACLE(16A/130V)	1	-----	-----	B2
10	32335-Z39-C90	PACKING, RECEPTACLE	1	-----	-----	B2
11	32346-Z40-C90	PANEL, CONTROL	1	-----	-----	B2
12	32351-ZT3-000	COVER, CONTROL PANEL	1	-----	-----	B2
13	32366-Z40-C90	MARK, CONTROL PANEL	1	-----	-----	B2
14	32601-ZT3-S21	CABLE, EARTH	1	-----	-----	B2
15	36214-Z11-A01	SWITCH COMP., AUTO-THROTTLE (OTAX)	1	-----	-----	B2
16	91560-SEO-003	BAND A, HARNESS(NATURAL)	1	-----	-----	B2
17	93500-05016-0G	SCREW, PAN, 5X16	4	-----	-----	B2
18	93500-05016-3J	SCREW, PAN, 5X16	1	-----	-----	B2
19	93891-05020-07	SCREW-WASHER, 5X20	2	-----	-----	B2
20	94101-05000	WASHER, PLAIN, 5MM	1	-----	-----	B2
21	94111-05000	WASHER, SPRING, 5MM	1	-----	-----	B2
22	95701-06010-08	BOLT, FLANGE, 6X10	1	-----	-----	B2



F-9

RECOIL STARTER



Z403F0900

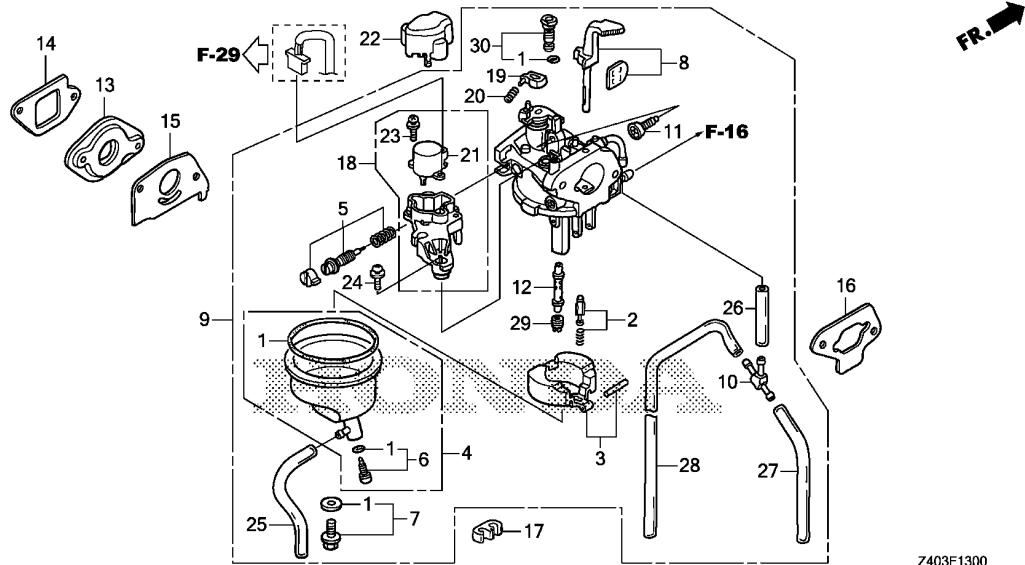
Ref. No.	L.O.N.	(Relative ref. Number) Description	F.R.T.
1	1121B9	STARTER, RECOIL	0.4
2	1121A3	GRIP, RECOIL STARTER	0.1
3	1121B3	ROPE, RECOIL STARTER	0.6
5	1121D4	GUIDE, RECOIL STARTER ROPE ...	0.1

Ref. No.	Part No.	Description	Reqd. QTY		Serial No.	Parts catalogue code
			EU	10i		
1	28400-ZT3-P11	STARTER ASSY., RECOIL	1			
2	28461-Z32-003	GRIP, STARTER	1			
3	28462-ZT3-P11	ROPE, RECOIL STARTER	1			
4	28464-Z32-003	COVER, GRIP	1			
5	28475-ZT3-000	GUIDE, STARTER ROPE	1			
6	90196-MN5-000	BOLT, FLANGE, 5X10	3		-----	B,B2,CL,F,G,GW1,LB,LL0,LL1,LT,RG,RH,RR0,RR1,SB,SK1,SS0,SS1,U,W
7	93891-05010-07	SCREW-WASHER, 5X10	1			

3

F-13

CARBURETOR



Z403F1300

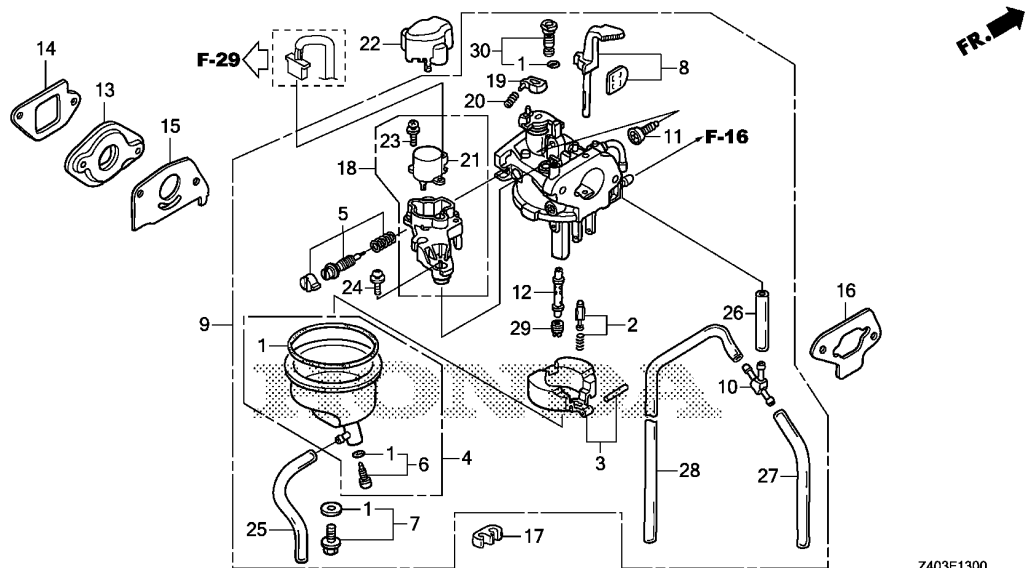
Ref. No.	L.O.N.	(Relative ref. Number) Description	F.R.T.
1	3111B1	GASKET SET, CARBURETOR	0.4
2	3111E1	FLOAT VALVE SET AND/OR FLOAT SET	0.4
4	3111A3	FLOAT CHAMBER SET AND/OR GASKET	0.3
5	3111D7	SCREW SET, PILOT	0.2
8	8101C5	CHOKE SET, CARBURETOR	0.3
9	3111F3	CARBURETOR	0.3
13	3111C0	CARBURETOR INSULATOR AND/OR PACKING	0.3
15	3111C8	PACKING, CARBURETOR	0.3
16	3121K0	PACKING, AIR INTAKE JOINT	0.2
18	6151F0	MOTOR, THROTTLE CONTROL	0.3
19	3111H0	LEVER, CARBURETOR LINK	0.3
21	6151F0	MOTOR, THROTTLE CONTROL	0.3
29	3111C3	JET, MAIN	0.4

Ref. No.	Part No.	Description	Reqd. QTY	Serial No.	Parts catalogue code
			EU 10i T1		
1	16010-ZM7-D01	GASKET SET	1		
2	16011-ZE0-005	VALVE SET, FLOAT	1		
3	16013-ZG0-811	FLOAT SET	1		
4	16015-ZM7-003	CHAMBER SET, FLOAT	1		
5	16016-ZH7-W01	SCREW SET, PILOT	1		
6	16024-ZB9-005	SCREW SET, DRAIN	1		
7	16028-ZG0-811	SCREW SET	1		
8	16044-ZM7-D01	CHOKE SET	1		
9	16100-ZM7-D28	CARBURETOR ASSY.(BF30C G)	1		
10	16112-ZM7-D01	JOINT, AIR VENT TUBE	1		
11	16124-ZE0-005	SCREW, THROTTLE STOP	1		
12	16166-ZM7-D02	NOZZLE, MAIN	1		
13	16211-ZM7-D10	INSULATOR, CARBURETOR	1		
14	16212-ZM7-D00	PACKING, INSULATOR	1		
15	16221-ZG0-801	PACKING, CARBURETOR	1		
16	17274-ZT3-000	PACKING, AIR INTAKE JOINT	1		
17	32765-PE0-000	CLAMP D, HIGH TENSION CORD	1		
18	36160-ZM7-D01	MOTOR ASSY., THROTTLE CONTROL	1		
19	36161-ZM7-D21	LEVER, LINK	1		
20	36162-ZM7-D21	SPRING, COMPRESSION COIL	1		
21	36165-ZL0-D31	MOTOR COMP., THROTTLE CONTROL	1		
22	36168-Z39-C90	COVER, THROTTLE MOTOR	1		
	36168-ZT3-C01		1		B2 HP1
	36168-Z39-C90		1	1041520	B,CL,F,G,GW1,LB,LL0,LL1,LT,RG,RH,RR0,RR1,SB,SK1,SS0,SS1,U,W
			1	1041521	B,CL,F,G,GW1,LB,LL0,LL1,LT,RG,RH,RR0,RR1,SB,SK1,SS0,SS1,U,W



F-13

CARBURETOR

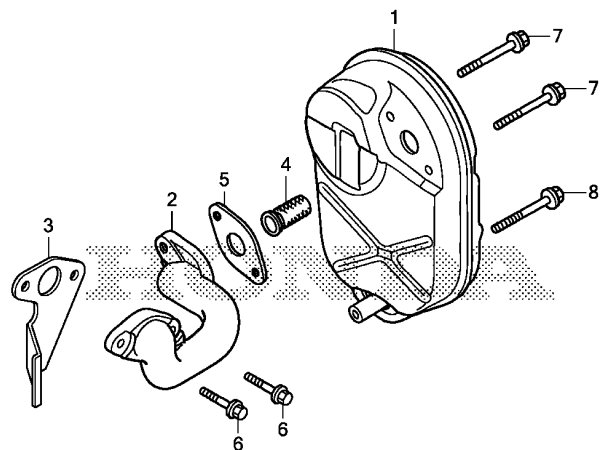


Z403F1300

Ref. No.	Part No.	Description	Reqd. QTY		Serial No.	Parts catalogue code
			EU	T1		
23	90003-ZL0-D30	SCREW-WASHER, 3X8	2			
24	93893-04010-18	SCREW-WASHER, 4X10	2			
25	95003-05019-31	TUBE, VINYL, 3.5X6.5X190 (95003-05001-60M)	1			
26	95003-07005-31	TUBE, VINYL, 4X7X50 (95003-07001-60M)	1			
27	95003-07016-31	TUBE, VINYL, 4X7X160 (95003-07001-60M)	1			
28	95003-07035-31	TUBE, VINYL, 4X7X350 (95003-07001-60M)	1			
29	99101-ZG0-0520	JET, MAIN, #52	(1)			
	99101-ZG0-0550	JET, MAIN, #55	(1)			
	99101-ZG0-0580	JET, MAIN, #58	1			
30	99204-ZE0-0350	JET SET, PILOT, #35	1			

F-15

MUFFLER



Z403F1500

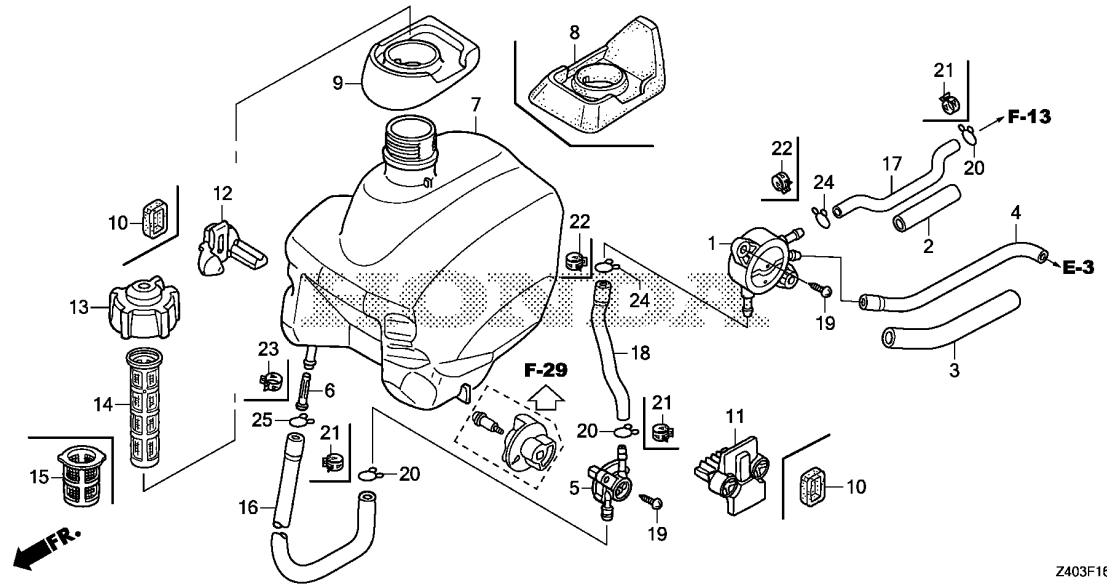
Ref. No.	L.O.N.	(Relative ref. Number) Description	F.R.T.
1	3131C5	MUFFLER, EXHAUST	0.2
2	3131C9	PIPE, EXHAUST	0.8
		.INCLUDES: Engine removal and installation	
3	3131B5	GASKET, EXHAUST PIPE	0.8
		.INCLUDES: Engine removal and installation	
4	3131A1	ARRESTER, SPARK	0.2
		.INCLUDES: Spark arrester check	
5	3131B4	GASKET, EXHAUST MUFFLER	0.2

Ref. No.	Part No.	Description	Reqd. QTY		Serial No.	Parts catalogue code
			EU	10i		
				T1		
1	18310-ZT3-S11	MUFFLER COMP.	1			
2	18331-ZT3-000	PIPE, EX.	1			
3	18333-ZT3-010	GASKET, EX. PIPE	1			
4	18355-888-810	ARRESTER, SPARK	1		----- HP1	
5	18382-ZC0-000	GASKET, MUFFLER	1			
6	90004-ZC3-000	BOLT, FLANGE, 5X20	2			
7	95701-06040-00	BOLT, FLANGE, 6X40	2			
8	95701-06045-08	BOLT, FLANGE, 6X45	1			



F-16

FUEL TANK



Ref. No.	L.O.N.	(Relative ref. Number) Description	F.R.T.
1	3101H9	PUMP, FUEL	0.5
4	3101E5	TUBE, DIAPHRAGM	0.5
5	3101A3	COCK, FUEL	0.5
6	3101H8	STRAINER, FUEL	0.5
7	3101H7	TANK, FUEL	0.5
9	4141F1	SEAL, FUEL FILLER NECK	0.3
11	3101M5	RUBBER, TANK MOUNTING :LEFT ..	0.4
12	3101M6	RUBBER, TANK MOUNTING :RIGHT ..	0.3
13	3101V2	CAP, FUEL TANK	0.1
14	3101A6	FILTER, FUEL	0.1
16	3101F1	TUBE, FUEL TANK	0.5
17	3101K7	TUBE, FUEL PUMP	0.4
18	3101F2	TUBE, FUEL COCK	0.5

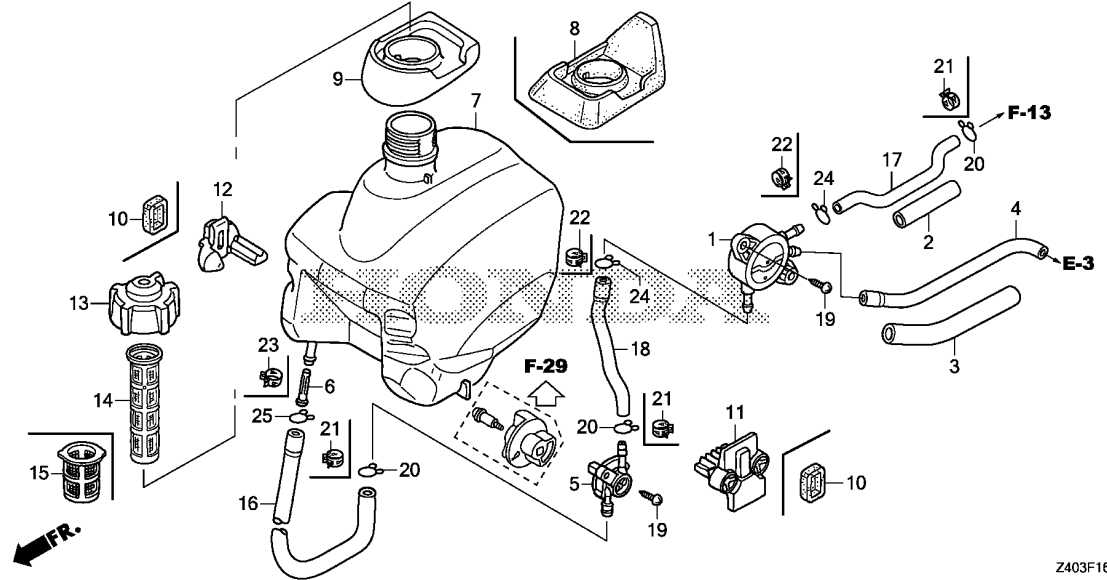
Z403F1600

Ref. No.	Part No.	Description	Reqd. QTY	Serial No.	Parts catalogue code
			EU 10i T1		
1	16700-ZT3-013	PUMP ASSY., FUEL	1		
2	16854-ZT3-000	RUBBER A, SUPPORTER	1		
3	16857-ZT3-000	RUBBER B, SUPPORTER	1		
4	16882-ZT3-000	TUBE, DIAPHRAGM	1		
5	16950-ZT3-003	COCK ASSY., FUEL	1		
6	16952-Z39-C90	STRAINER, FUEL	1	-----	B2
	16952-ZA8-800	1	-----	HP1
	16952-Z39-C90	1	1041520	B,CL,F,G,GW1,LB,LL0,LL1,LT,RG,RH,RR0,RR1,SB,SK1,SS0,SS1,U,W
7	17511-ZT3-C00	TANK, FUEL	1	1041521	B,CL,F,G,GW1,LB,LL0,LL1,LT,RG,RH,RR0,RR1,SB,SK1,SS0,SS1,U,W
8	17514-Z07-000	SEAL, FUEL FILLER NECK	1	-----	HP1
9	17514-ZT3-000	SEAL, FUEL FILLER NECK	1	-----	B,B2,CL,F,G,GW1,LB,LL0,LL1,LT,RG,RH,RR0,RR1,SB,SK1,SS0,SS1,U,W
10	17532-Z07-000	RUBBER A, TANK MOUNTING	2	-----	HP1
11	17532-ZT3-000	RUBBER R, TANK MOUNTING	1	-----	B,B2,CL,F,G,GW1,LB,LL0,LL1,LT,RG,RH,RR0,RR1,SB,SK1,SS0,SS1,U,W
12	17533-ZT3-000	RUBBER L, TANK MOUNTING	1	-----	B,B2,CL,F,G,GW1,LB,LL0,LL1,LT,RG,RH,RR0,RR1,SB,SK1,SS0,SS1,U,W
13	17620-ZT3-030	CAP ASSY., FUEL TANK	1	-----	B,B2,CL,F,G,GW1,LB,LL0,LL1,LT,RG,RH,RR0,RR1,SB,SK1,SS0,SS1,U,W
14	17670-Z07-000	FILTER COMP., FUEL	1	-----	B,B2,CL,F,G,GW1,LB,LL0,LL1,LT,RG,RH,RR0,RR1,SB,SK1,SS0,SS1,U,W
15	17670-ZC3-700	FILTER COMP., FUEL	1	-----	HP1
16	17701-ZT3-000	TUBE, FUEL TANK	1	-----	B,B2,CL,F,G,GW1,LB,LL0,LL1,LT,RG,RH,RR0,RR1,SB,SK1,SS0,SS1,U,W
	17701-ZT3-S11	TUBE, FUEL TANK(FKM)	1	-----	HP1
17	17702-ZT3-000	TUBE A, FUEL	1	-----	B,B2,CL,F,G,GW1,LB,LL0,LL1,LT,RG,RH,RR0,RR1,SB,SK1,SS0,SS1,U,W
	17702-ZT3-S11	TUBE A, FUEL(FKM)	1	-----	HP1
18	17703-ZT3-000	TUBE B, FUEL	1	-----	B,B2,CL,F,G,GW1,LB,LL0,LL1,LT,RG,RH,RR0,RR1,SB,SK1,SS0,SS1,U,W
	17703-ZT3-S11	TUBE B, FUEL(FKM)	1	-----	HP1
19	93913-25520	SCREW, TAPPING, 5X20(PO)	3		
20	95002-02080	CLIP, TUBE(B8)	3	-----	B,B2,CL,F,G,GW1,LB,LL0,LL1,LT,RG,RH,RR0,RR1,SB,SK1,SS0,SS1,U,W

3

F-16

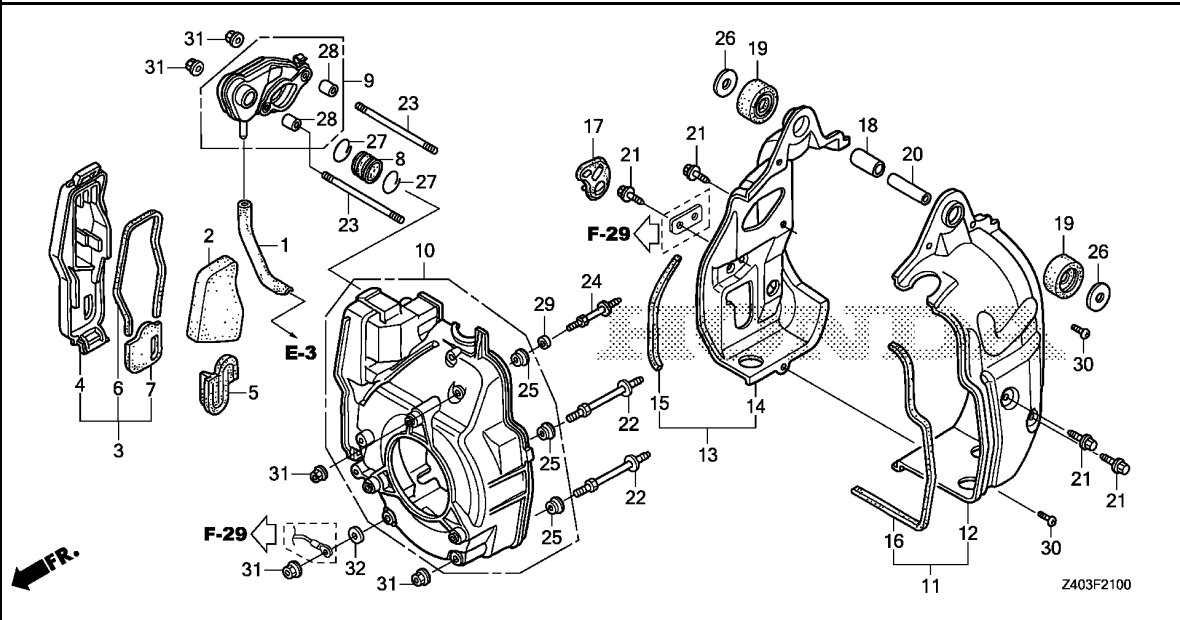
FUEL TANK



Ref. No.	Part No.	Description	Reqd. QTY		Serial No.	Parts catalogue code
			EU	10i		
21	95002-40800-08	CLAMP, TUBE(D8)	3	-----	-----	HP1
22	95002-40850-08	CLAMP, TUBE(D8.5)	2	-----	-----	HP1
23	95002-41050-08	CLAMP, TUBE(D10.5)	1	-----	-----	HP1
24	95002-50000	CLIP, TUBE(C9)	2	-----	-----	B,B2,CL,F,G,GW1,LB,LL0,LL1,LT,RG,RH,RRO,RR1,SB,SK1,SS0,SS1,U,W
25	95002-70000	CLIP, TUBE(C11)	1	-----	-----	B,B2,CL,F,G,GW1,LB,LL0,LL1,LT,RG,RH,RRO,RR1,SB,SK1,SS0,SS1,U,W

F-21

AIR CLEANER/SHROUD



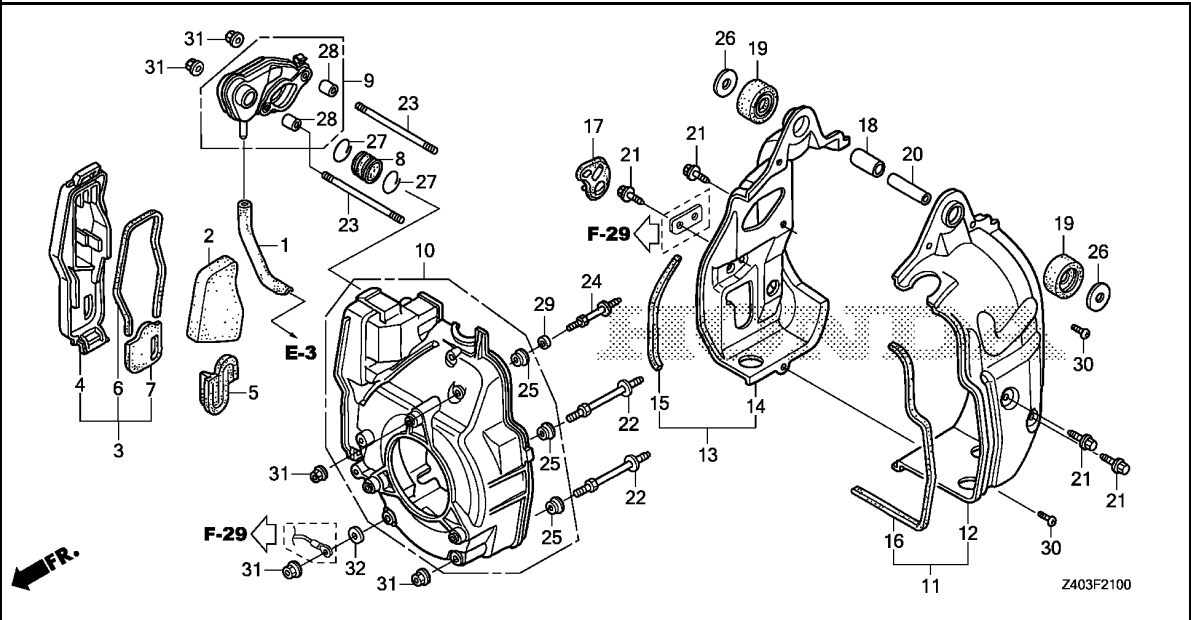
Ref. No.	L.O.N.	(Relative ref. Number) Description	F.R.T.
1	1111K5	TUBE, BREATHER	0.1
2	3121B8	ELEMENT, AIR CLEANER	0.1
		.INCLUDES: Air cleaner element -inspection (7)	
3	3121B1	COVER, AIR CLEANER	0.1
6	3121E9	SEAL, AIR CLEANER COVER	0.1
8	3121K5	TUBE, AIR CLEANER CONNECTING	0.1
9	3121K4	JOINT, AIR INTAKE	0.1
10	1141G8	COVER, ENGINE COOLING FAN	0.7
11	4141D9	SHROUD, ENGINE :LEFT	0.8
		(12,16)	
13	4141E1	SHROUD, ENGINE :RIGHT	0.8
		(14,15)	
19	4141K9	INSULATOR, SHROUD	0.3
	4141K9A	.Replace one shroud insulator add	0.1

3

Ref. No.	Part No.	Description	Reqd. QTY	Serial No.	Parts catalogue code
			EU 10i T1		
1	15721-ZT3-000	TUBE, BREATHER	1		
2	17211-ZT3-000	ELEMENT, AIR CLEANER	1		
3	17230-ZT3-000	COVER COMP., AIR CLEANER	1		
4	17231-ZT3-000	COVER, AIR CLEANER	1		
5	17232-ZT3-000	RUBBER, AIR CLEANER	1		
6	17233-ZT3-000	SEAL A, AIR CLEANER COVER ...	1		
7	17234-ZT3-000	SEAL B, AIR CLEANER COVER ...	1		
8	17251-ZT3-000	TUBE, AIR CLEANER CONNECTING	1		
9	17270-ZT3-030	JOINT COMP., AIR INTAKE	1		
10	19610-ZT3-000	COVER COMP., FAN	1		
11	19630-ZT3-010	SHROUD ASSY., R.	1		
12	19632-ZT3-010	SHROUD, R.	1		
13	19640-ZT3-010	SHROUD ASSY., L.	1		
14	19641-ZT3-010	SHROUD, L.	1		
15	19643-ZT3-000	SEAL A, SHROUD	1		
16	19644-ZT3-000	SEAL B, SHROUD	1		
17	63713-ZT3-000	RUBBER, OIL CHECK	1		
18	68337-ZT3-000	COLLAR D, INSULATOR	1		
19	68338-ZT3-000	INSULATOR, SHROUD	2		
20	68339-ZT3-000	COLLAR B, INSULATOR	1		
21	90019-883-000	BOLT, FLANGE, 5X10	4		
22	90101-ZT3-000	BOLT, STUD(A)	2		
23	90102-ZT3-010	BOLT, STUD, 5X93	2		
24	90103-ZT3-000	BOLT, STUD(B)	1		
25	90129-463-770	COLLAR, REFLECTOR SETTING ...	3		

F-21

AIR CLEANER/SHROUD

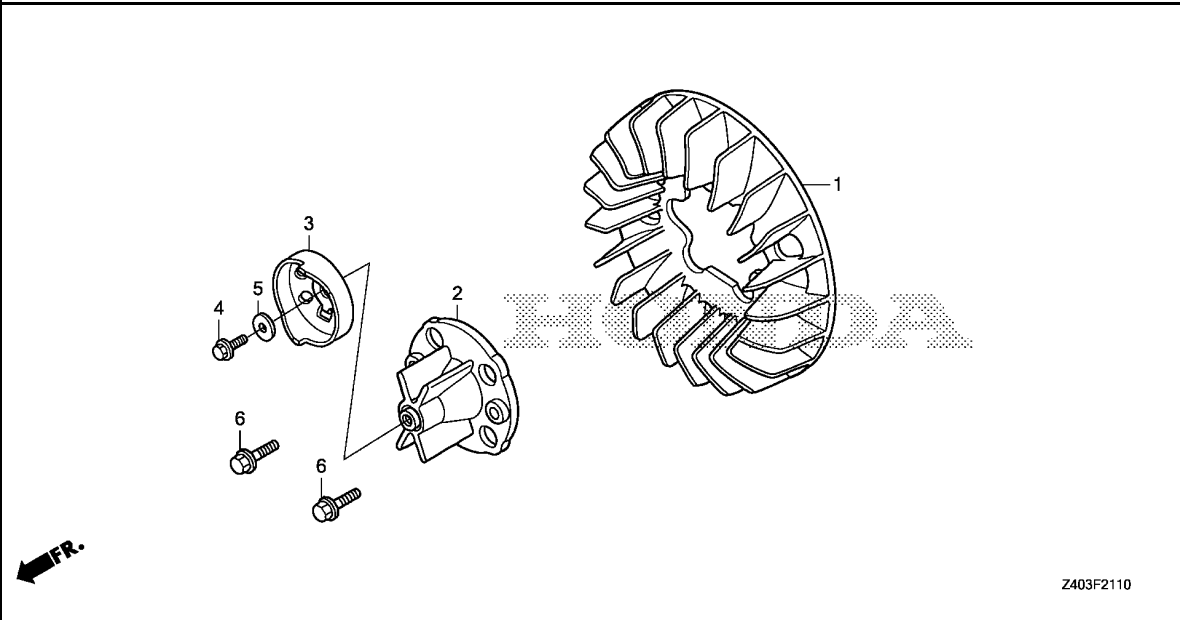


Ref. No.	Part No.	Description	Reqd. QTY		Serial No.	Parts catalogue code
			EU	T1		
26	90551-033-000	WASHER, SPROCKET SETTING	2			
27	90851-ZC3-000	CLIP(28MM)	2			
28	91551-ZT3-000	COLLAR, AIR CLEANER CASE	2			
29	91554-ZT3-000	COLLAR, DISTANCE	1			
30	93500-04006-0H	SCREW, PAN, 4X6	2			
31	94050-05080	NUT, FLANGE, 5MM	5			
32	94101-05000	WASHER, PLAIN, 5MM	1			

----- B,B2,CL,F,G,GW1,LB,LL0,LL1,LT,RG,RH,RR0,RR1,SB,SK1,SS0,SS1,U,W

F-21-10

COOLING FAN



Ref. No.	L.O.N.	(Relative ref. Number) Description	F.R.T.
1	6201B7	FAN, GENERATOR COOLING	0.7
2	6201C8	BOSS, COOLING FAN	0.7
3	1121A9	PULLEY, RECOIL STARTER	0.5

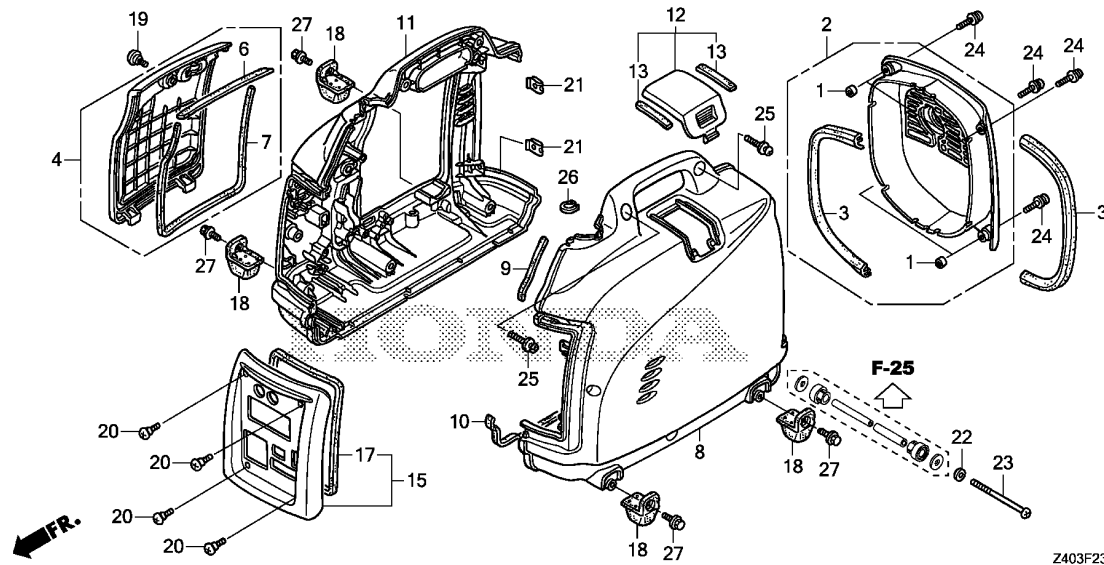
Z403F2110

Ref. No.	Part No.	Description	Reqd. QTY	Serial No.	Parts catalogue code
			EU 10i T1		
1	19511-ZT3-000	FAN, COOLING	1		
2	19514-ZT3-000	BOSS, COOLING FAN	1	-----	B,B2,CL,F,G,GW1,LB,LL0,LL1,LT,RG,RH,RRO,RR1,SB,SK1,SS0,SS1,U,W
3	28451-ZM7-003	PULLEY, RECOIL STARTER	1		
4	90029-888-000	BOLT, FLANGE, 6X16(CT200) ...	1	-----	B,B2,CL,F,G,GW1,LB,LL0,LL1,LT,RG,RH,RRO,RR1,SB,SK1,SS0,SS1,U,W
5	94103-06800	WASHER, PLAIN, 6MM	1	-----	B,B2,CL,F,G,GW1,LB,LL0,LL1,LT,RG,RH,RRO,RR1,SB,SK1,SS0,SS1,U,W
6	95701-06016-08	BOLT, FLANGE, 6X16	2	-----	B,B2,CL,F,G,GW1,LB,LL0,LL1,LT,RG,RH,RRO,RR1,SB,SK1,SS0,SS1,U,W

3

F-23

FRONT COVER/SIDE COVER

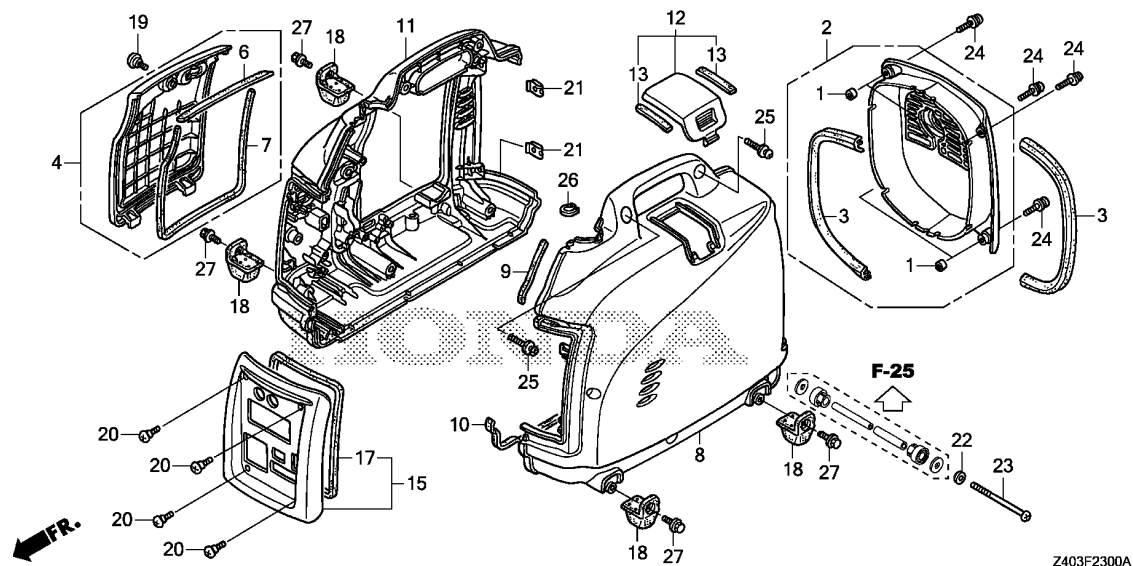


Ref. No.	L.O.N.	(Relative ref. Number) Description	F.R.T.
2		(3)	
2	3131D6	PROTECTOR, EXHAUST MUFFLER ...	0.1
4	4131K5	COVER, MAINTENANCE	0.1
6	4141L3	SEAL A, MAINTENANCE COVER	0.1
7	4141L4	SEAL B, MAINTENANCE COVER	0.1
8	4141L6	COVER, GENERATOR SIDE :LEFT ..	0.5
9	4141L7	SEAL A, GENERATOR SIDE COVER ..	0.5
11	4141L5	COVER, GENERATOR SIDE :RIGHT ..	0.7
12	4131L7	COVER, SPARK PLUG MAINTENANCE	0.1
13	4141F2	SEAL, MAINTENANCE COVER PLUG ..	0.1
15		(17)	
15	410107	COVER, GENERATOR :FRONT	0.2
18	4101V0	RUBBER, BOTTOM :LEFT FRONT ...	0.1
		.NOTE: Same time for two units or more	
4101V1		RUBBER, BOTTOM :RIGHT FRONT ..	0.1
		.NOTE: Same time for two units or more	
4101V3		RUBBER, BOTTOM :LEFT REAR	0.1
		.NOTE: Same time for two units or more	
4101V4		RUBBER, BOTTOM :RIGHT REAR ...	0.1
		.NOTE: Same time for two units or more	

Ref. No.	Part No.	Description	Reqd. QTY		Serial No.	Parts catalogue code
			EU	T1		
1	16598-ZG1-750	COLLAR, CONTROL COVER	4			
2	18320-ZT3-C60	PROTECTOR COMP., MUFFLER	1		B,B2,CL,F,G,GW1,RG,W	
	18320-ZT3-000	1		HP1,LB,LL0,LL1,LT,RH,RR0,RR1,SB,SK1,SS0,SS1,U	
3	18327-ZT3-300	SEAL RUBBER, PROTECTOR	2			
4	63150-ZT3-C01	COVER ASSY., MAINTENANCE	1		B,B2,CL,F,G,GW1,LB,LL0,LL1,LT,RG,RH,RR0,RR1,SB,SK1,SS0,SS1,U,W	
6	63153-ZT3-000	SEAL A, MAINTENANCE COVER ...	1			
7	63154-ZT3-000	SEAL B, MAINTENANCE COVER ...	1			
8	63210-ZT3-C02	COVER COMP., R. SIDE	1		B,B2,CL,F,G,GW1,LB,LL0,LL1,LT,RG,RH,RR0,RR1,SB,SK1,SS0,SS1,U,W	
9	63218-ZT3-000	SEAL A, SIDE COVER	1		B,B2,CL,F,G,GW1,LB,LL0,LL1,LT,RG,RH,RR0,RR1,SB,SK1,SS0,SS1,U,W	
10	63219-ZT3-000	SEAL B, SIDE COVER	1			
11	63220-ZT3-C02	COVER COMP., L. SIDE	1		B,B2,CL,F,G,GW1,LB,LL0,LL1,LT,RG,RH,RR0,RR1,SB,SK1,SS0,SS1,U,W	
12	63340-ZT3-C01	COVER ASSY., PLUG CHECK	1		B,B2,CL,F,G,GW1,LB,LL0,LL1,LT,RG,RH,RR0,RR1,SB,SK1,SS0,SS1,U,W	
13	63344-ZT3-000	SEAL, PLUG CHECK	2			
15	63510-ZT3-E61	COVER ASSY., FR.	1		B,CL,F,G,GW1,W	
	63510-Z40-C90	1		B2	
	63510-ZT3-C00	1		LB,LL1,LT,RH,RR1,SB,SS1	
	63510-ZT3-C70	1		LL0,RR0,SS0	
	63510-ZT3-C61	1		RG,U	
	63510-ZT3-S20	1		SK1	
17	63512-ZT3-000	SEAL, FR. COVER	1		B,B2,CL,F,G,GW1,LB,LL0,LL1,LT,RG,RH,RR0,RR1,SB,SK1,SS0,SS1,U,W	
18	68325-ZT3-000	RUBBER, BOTTOM	4			
19	90102-Z07-003	SCREW, SPECIAL, 6X16	1			
20	90114-Z39-C30	SCREW, FR. COVER	4		B,B2,CL,F,G,GW1,LB,LL0,LL1,LT,RG,RH,RR0,RR1,SB,SK1,SS0,SS1,U,W	
21	90320-GE2-760	NUT, SPRING, 5MM	4			
22	90485-286-000	WASHER, 6MM	2			
23	93500-06100-0A	SCREW, PAN, 6X100	2			

F-23

FRONT COVER/SIDE COVER

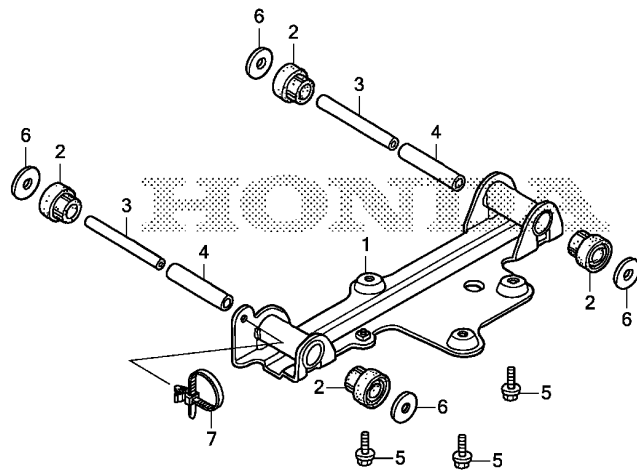


Z403F2300A

Ref. No.	Part No.	Description	Reqd. QTY		Serial No.	Parts catalogue code
			EU	10i		
24	93891-05016-07	SCREW-WASHER, 5X16	4		
25	93891-06020-07	SCREW-WASHER, 6X20	2		
26	94514-10150	CIRCLIP, EXTERNAL, 10MM	1	-----	B,B2,CL,F,G,GW1,LB,LL0,LL1,LT,RG,RH,RR0,RR1,SB,SK1,SS0,SS1,U,W
27	96001-06010-07	BOLT, FLANGE, 6X10	4		

F-25

ENGINE BED



FR.

Z403F2500

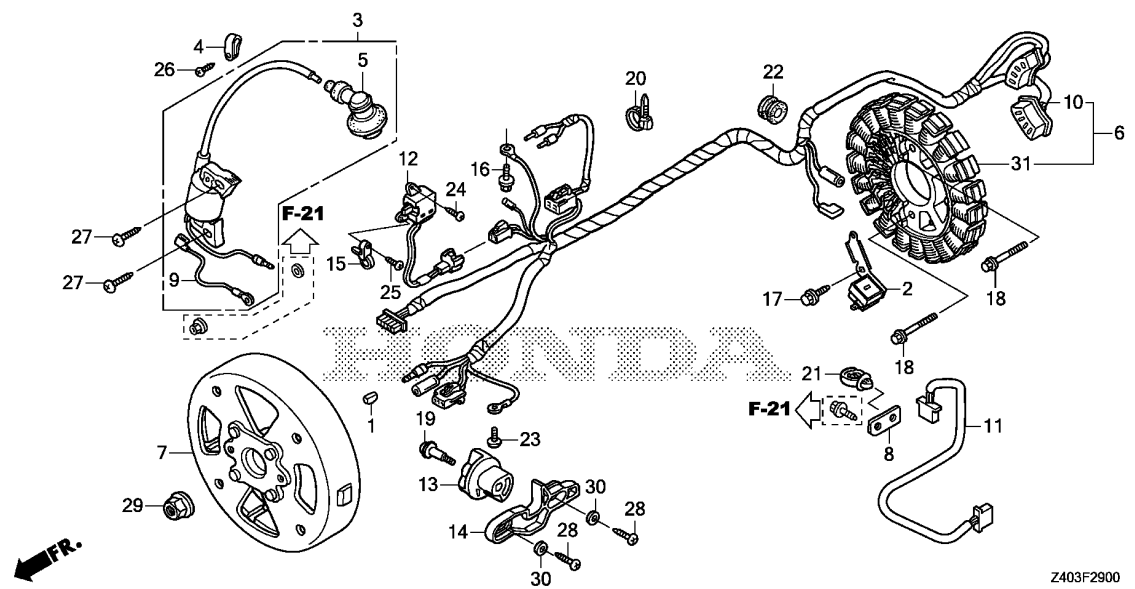
Ref. No.	L.O.N.	(Relative ref. Number) Description	F.R.T.
1	4101A6	BED, ENGINE GENERATOR	0.7
2	4101Y7	INSULATOR, ENGINE BED	0.4
	4101Y8	INSULATOR, ENGINE BED :ALL ...	0.7

Ref. No.	Part No.	Description	Reqd. QTY		Serial No.	Parts catalogue code
			EU	10i		
1	51110-ZT3-010	BED COMP., ENGINE	1			
2	68314-ZT3-000	INSULATOR, ENGINE BED	4			
3	68333-ZT3-000	COLLAR A, INSULATOR	2			
4	68336-ZT3-000	COLLAR C, INSULATOR	2			
5	90029-888-000	BOLT, FLANGE, 6X16(CT200) ...	3			
6	90551-033-000	WASHER, SPROCKET SETTING	4			
7	90672-SAO-003	STRAP, CABLE, 118MM(BLACK) ..	1			

3

F-29

IGNITION COIL/GENERATOR



Ref. No.	L.O.N.	(Relative ref. Number) Description	F.R.T.
2	614120	COIL, PULSER	0.7
3	6141A5	COIL, IGNITION(ONE)	0.5
5	6141B8	TERMINAL, HIGH TENSION	0.1
6		(31)	
	6201B9	STATOR, GENERATOR	1.2
		.INCLUDES: Engine removal and installation	
7	6201A9	ROTOR, GENERATOR	0.9
		.INCLUDES: Engine removal and installation	
9	6141D4	CORD, IGNITION COIL EARTH	0.4
10	6201B8	HARNESS, GENERATOR WIRE	1.2
		.INCLUDES: Engine removal and installation	
12	6151D9	SWITCH, ENGINE STOP	0.5
13	8101T9	KNOB, ENGINE SWITCH	0.1
14	4131N8	PLATE, ENGINE SWITCH	0.4

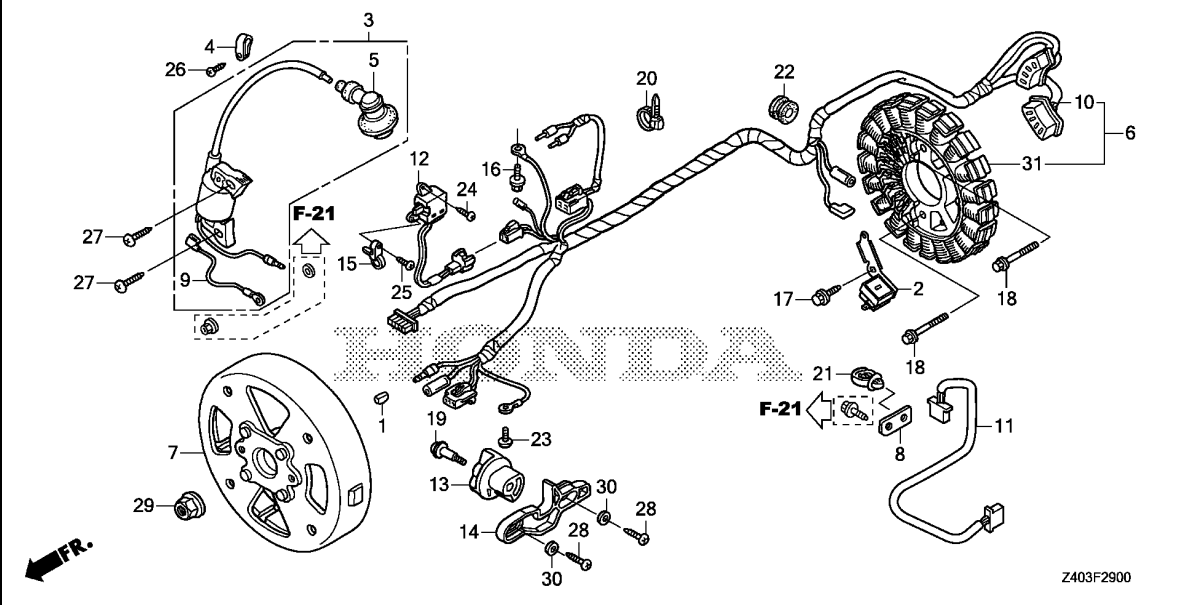
Z403F2900

Ref. No.	Part No.	Description	Reqd. QTY	Serial No.	Parts catalogue code
			EU 10i T1		
1	13331-ZM7-000	KEY, SPECIAL	1		
2	30315-ZT3-003	COIL COMP., PULSER	1		
3	30500-Z40-C91	COIL ASSY., IGNITION	1	----- B2	
	30500-ZT3-023	1	----- HP1	
	30500-Z40-C91	1	1041520 B,CL,F,G,GW1,LB,LL0,LL1,LT,RG,RH,RR0,RR1,SB,SK1,SS0,SS1,U,W	
4	30564-895-000	CLAMP A, CABLE	1	1041521 B,CL,F,G,GW1,LB,LL0,LL1,LT,RG,RH,RR0,RR1,SB,SK1,SS0,SS1,U,W	
5	30700-Z39-C91	CAP ASSY., NOISE SUPPRESSOR	1	----- B2	
	30700-ZT3-C02	1	----- HP1	
	30700-Z39-C91	1	1041520 B,CL,F,G,GW1,LB,LL0,LL1,LT,RG,RH,RR0,RR1,SB,SK1,SS0,SS1,U,W	
		1	1041521 B,CL,F,G,GW1,LB,LL0,LL1,LT,RG,RH,RR0,RR1,SB,SK1,SS0,SS1,U,W	
6	31120-ZT3-E61	STATOR ASSY.	1	----- B,CL,F,G,GW1,RG,RH,W	
	31120-ZT3-P11	1	----- LB,LL0,LL1,LT	
	31120-ZT3-E71	1	----- RR0,RR1,SB,SK1,SS0,SS1,U	
7	31130-ZT3-C01	ROTOR COMP.	1	----- B,B2,CL,F,G,GW1,LB,LL0,LL1,LT,RG,RH,RR0,RR1,SB,SK1,SS0,SS1,U,W	
	31130-ZT3-G02	1	----- HP1	
8	32103-759-000	BRACKET, WIRE HARNESS CLIP ..	1		
9	32157-ZT3-000	CORD, IGNITION EARTH	1		
10	32158-ZT3-E61	HARNESS ASSY., GENERATOR WIRE	1	----- B,CL,F,G,GW1,RG,RH,W	
	32158-Z40-C91	1	----- B2	
	32158-ZT3-P11	1	----- LB,LL0,LL1,LT	
	32158-ZT3-E71	1	----- RR0,RR1,SB,SK1,SS0,SS1,U	
11	32196-Z40-C90	SUB CORD ASSY.	1	----- B2	
	32196-ZT3-P10	1	1041136 B,CL,F,G,GW1,LB,LL0,LL1,LT,RG,RH,RR0,RR1,SB,SK1,SS0,SS1,U,W	
	32196-Z40-C90	1	1041137 B,CL,F,G,GW1,LB,LL0,LL1,LT,RG,RH,RR0,RR1,SB,SK1,SS0,SS1,U,W	
12	35120-ZT3-023	SWITCH ASSY., ENGINE STOP	1		
13	35123-ZT3-000	KNOB, ENGINE SWITCH	1	----- B,B2,CL,F,G,GW1,LB,LL0,LL1,LT,RG,RH,RR0,RR1,SB,SK1,SS0,SS1,U,W	

3

F-29

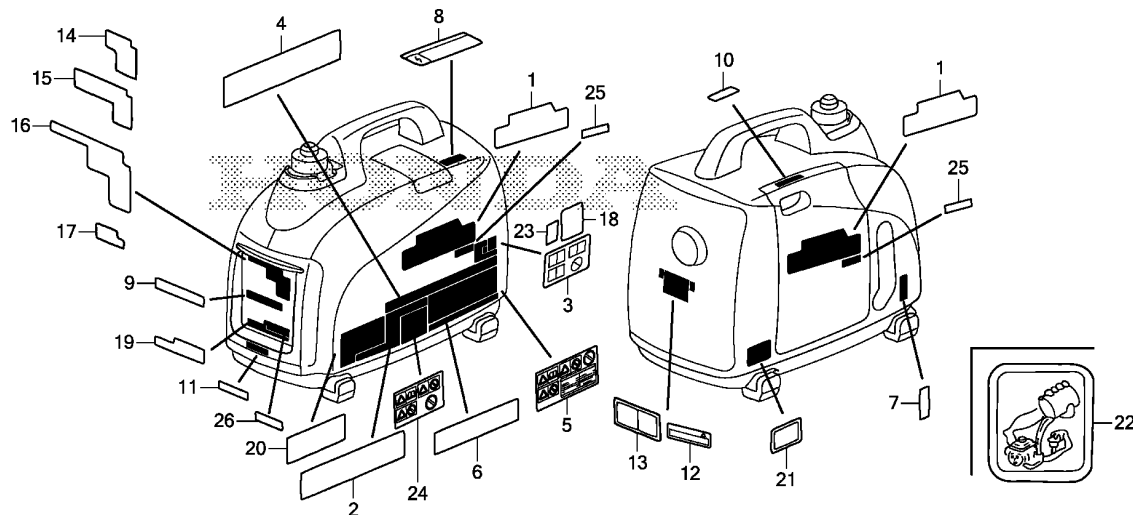
IGNITION COIL/GENERATOR



Ref. No.	Part No.	Description	Reqd. QTY		Serial No.	Parts catalogue code
			EU	10i		
13)	35123-ZT3-900	KNOB, ENGINE SWITCH	1		----- HP1	
14	35127-ZT3-000	PLATE, ENGINE SWITCH	1		-----	
15	36135-ZA8-801	BAND, HARNESS	1		----- B,B2,CL,F,G,GW1,LB,LL0,LL1,LT,RG,RH,RR0,RR1,SB,SK1,SS0,SS1,U,W	
16	90002-MC7-000	BOLT, FLANGE, 5X8	1		----- B,B2,CL,F,G,GW1,LB,LL0,LL1,LT,RG,RH,RR0,RR1,SB,SK1,SS0,SS1,U,W	
17	90003-892-000	BOLT, FLANGE, 5X12	1		-----	
18	90014-KCZ-000	BOLT, FLANGE, 5X25(CT200) ...	2		----- B,B2,CL,F,G,GW1,LB,LL0,LL1,LT,RG,RH,RR0,RR1,SB,SK1,SS0,SS1,U,W	
19	90105-ZT3-000	SCREW, PAN, 4X19	1		-----	
20	90652-KT1-771	BAND, WIRE(BLACK)	1		-----	
21	90683-SAO-003	CLIP, WIRE HARNESS, 25MM	1		-----	
22	91651-ZT3-C00	GROMMET, GENERATOR CORD	1		-----	
23	93500-05008-3J	SCREW, PAN, 5X8	1		----- B,B2,CL,F,G,GW1,LB,LL0,LL1,LT,RG,RH,RR0,RR1,SB,SK1,SS0,SS1,U,W	
24	93901-12220	SCREW, TAPPING, 3X10	1		----- B,B2,CL,F,G,GW1,LB,LL0,LL1,LT,RG,RH,RR0,RR1,SB,SK1,SS0,SS1,U,W	
25	93901-12420	SCREW, TAPPING, 3X16	1		-----	
26	93903-25220	SCREW, TAPPING, 5X12	1		-----	
27	93903-26320	SCREW, TAPPING, 6X20	2		-----	
28	93913-25520	SCREW, TAPPING, 5X20(PO)	2		-----	
29	94050-10080	NUT, FLANGE, 10MM	1		-----	
30	94103-05800	WASHER, PLAIN, 5MM	2		-----	
31	31125-Z40-C91	STATOR COMP.	1		----- B2	

F-31

LABEL



Z403F3100

Ref. L.O.N. (Relative ref. Number) F.R.T.
No. Description

NO INFORMATION

3

Ref. No.	Part No.	Description	Reqd. QTY		Serial No.	Parts catalogue code
			EU	10i		
1	87101-ZT3-C32	EMBLEM	2	-----	B,B2,CL,F,G,GW1,LB,LL0,LL1,LT,RG,RH,RR0,RR1,SB,SK1,SS0,SS1,U,W	
2	87114-ZT3-P90	LABEL, WARNING	1	-----	CL	
3	87150-Z25-A61	MARK, CAUTION	1	-----	RG	
4	87150-Z40-D30	MARK, CAUTION	1	-----	LL0,LL1	
	87150-Z40-S80	1	-----	LT	
	87150-Z40-S50	1	-----	RH	
	87150-Z40-D60	1	-----	RR0,RR1	
	87150-Z40-S70	1	-----	SK1	
	87150-Z40-C70	1	-----	SS0,SS1	
5	87150-Z40-W10	MARK, CAUTION	1	-----	LB	
	87150-Z40-U10	1	-----	SB	
6	87152-Z40-W70	MARK, SPEC	1	-----	RG	
7	87501-ZT3-C61	MARK, ENGINE SWITCH	1	-----	B,B2,CL,F,G,GW1,LB,RG,SB,W	
	87501-ZT3-C31	1	-----	LL0,LL1,LT,RR0,RR1,SK1,SS0,SS1	
	87501-ZT3-S50	1	-----	RH	
	87501-ZT3-C81	1	-----	U	
8	87511-ZT3-S20	MARK, CAUTION VOLTAGE	1	-----	SK1	
9	87525-ZT3-C60	MARK, D.C. CAUTION	1	-----	B,CL,F,G,GW1,LB,RG,SB,W	
	87525-ZT3-C70	1	-----	LL0,LL1,RR0,RR1,SS0,SS1	
	87525-ZT3-S80	1	-----	LT	
	87525-ZT3-S50	1	-----	RH	
	87525-ZT3-S70	1	-----	SK1	
	87525-ZT3-C80	1	-----	U	
10	87528-ZT3-C01	MARK, CHOKE	1	-----	B,B2,CL,F,G,GW1,LB,LL0,LL1,LT,RG,RH,RR0,RR1,SB,SK1,SS0,SS1,U,W	
11	87531-ZT3-000	MARK, HONDA	1	-----	B,B2,CL,F,G,GW1,LB,LL0,LL1,LT,RG,RH,RR0,RR1,SB,SK1,SS0,SS1,U,W	
12	87539-ZT3-C41	MARK, EX. CAUTION	1	-----	LL0,LL1,RR0,RR1,SS0,SS1,U	
	87539-ZT3-S80	1	-----	LT	

F-31

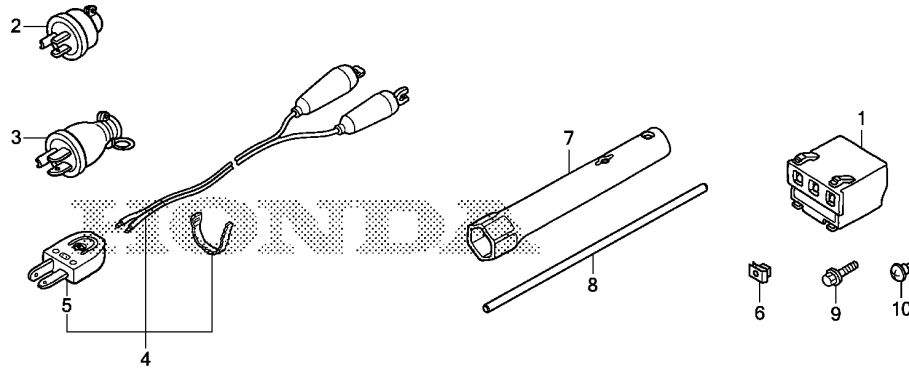
LABEL

Ref. No.	Part No.	Description	Reqd. QTY		Serial No.	Parts catalogue code
			EU	10i		
12)	87539-ZT3-S50	MARK, EX. CAUTION	1	-----	-----	RH
	87539-ZT3-S70	1	-----	-----	SK1
13	87539-ZT3-C60	MARK, EX. CAUTION	1	-----	-----	B,B2,CL,F,G,GW1,LB,RG,SB,W
14	87564-ZT3-E60	MARK, A.C. CAUTION	1	-----	-----	B,CL,F,G,GW1,W
	87564-ZT3-C60	1	-----	-----	RG
	87564-ZT3-C80	1	-----	-----	U
15	87564-ZT3-C70	MARK, A.C. CAUTION	1	-----	-----	LL0,RR0,SS0
16	87564-ZT3-W10	MARK, A.C. CAUTION	1	-----	-----	LB
	87564-ZT3-D30	1	-----	-----	LL1,RR1,SS1
	87564-ZT3-S80	1	-----	-----	LT
	87564-ZT3-S50	1	-----	-----	RH
	87564-ZT3-U10	1	-----	-----	SB
17	87564-ZT3-S70	MARK, A.C. CAUTION	1	-----	-----	SK1
18	87578-ZT3-C60	LABEL, NOISE LEVEL(87)	1	-----	-----	B,CL,F,G,GW1,W
19	87580-ZT3-C61	MARK, CIRCUIT PROTECTOR	1	-----	-----	B,CL,F,G,GW1,LB,RG,SB,W
	87580-ZT3-C30	1	-----	-----	LL0,LL1,RR0,RR1,SS0,SS1
	87580-ZT3-S80	1	-----	-----	LT
	87580-ZT3-S51	1	-----	-----	RH
	87580-ZT3-S70	1	-----	-----	SK1
	87580-ZT3-C80	1	-----	-----	U
20	87583-ZT3-C71	LABEL, A.C. RESET	1	-----	-----	LL1,RR1,SS1
21	87594-ZT3-010	MARK, OIL CAUTION	1	-----	-----	B,B2,CL,F,G,GW1,LB,LL0,LL1,LT,RG,RH,RR0,RR1,SB,SK1,SS0,SS1,U,W
22	87596-ZT3-D30	MARK, OIL CHECK	1	-----	-----	LL0,LL1,LT,RH,RR0,RR1
23	87709-Z07-S50	MARK, RECYCLE	1	-----	-----	GW1
24	87150-Z39-C61	MARK, CAUTION(EC)	1	-----	-----	B2
25	87145-Z40-C90	MARK, STRIPE	2	-----	-----	B2
26	87533-Z40-C90	MARK, INDICATOR	1	-----	-----	B2



F-32

TOOL/OTHER PARTS



Z403F3200

Ref. L.O.N. (Relative ref. Number) F.R.T.
No. Description

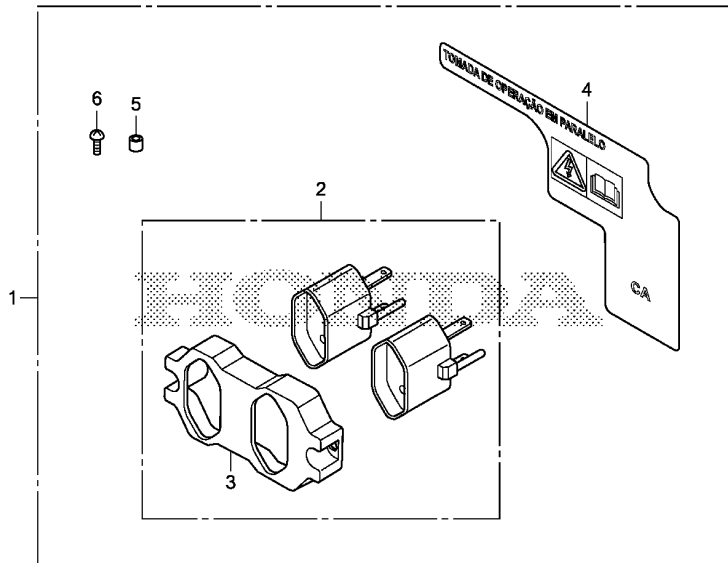
NO INFORMATION

3

Ref. No.	Part No.	Description	Reqd. QTY		Serial No.	Parts catalogue code
			EU	10i		
1	30400-ZT3-C02	SPARK UNIT	1	-----	-----	HP1
2	32310-812-640	PLUG ASSY., CONSENT	2	-----	-----	RH,RR0,RR1,SS0,SS1
3	32310-836-000	PLUG ASSY., CONSENT (15A/125V)	2	-----	-----	LL0,LL1,LT
4	32650-892-013	CORD ASSY., CHARGE (2M)	(1)	-----	-----	B,CL,F,G,LB,LL0,LL1,LT,RG,RH,RR0,RR1,SB,SK1,SS0,SS1,W
	32650-ZT3-D41	CORD ASSY., CHARGE	(1)	-----	-----	GW1
	32650-892-013	CORD ASSY., CHARGE (2M)	1	-----	-----	U
5	32651-892-003	PLUG ASSY., CONSENT	(1)	-----	-----	B,CL,F,G,GW1,LB,LL0,LL1,LT,RG,RH,RR0,RR1,SB,SK1,SS0,SS1,W
			1	-----	-----	U
6	84601-HA7-670	NUT, FENDER SETTING	4	-----	-----	HP1
7	89216-130-690	WRENCH, SPARK PLUG	1	-----	-----	
8	89219-805-000	HANDLE, BOX WRENCH	1	-----	-----	
9	90003-892-000	BOLT, FLANGE, 5X12	2	-----	-----	HP1
10	90380-GM9-740	SCREW, SPECIAL, 6X15	2	-----	-----	HP1

FOP-1

CONSENT KIT



Z403Y0100

Ref. No.	L.O.N. (Relative ref. Number)	Description	F.R.T.
----------	-------------------------------	-------------	--------

NO INFORMATION

Ref. No.	Part No.	Description	Reqd. QTY	Serial No.	Parts catalogue code
1	06324-ZT3-F30	CONSENT KIT	(1)	-----	LL0,LL1,SS0,SS1
2	32331-ZT3-F30	ADAPTER, RECEPTACLE	(1)	-----	LL0,LL1,SS0,SS1
3	32332-ZT3-F30	CASE, ADAPTER (LB)	(1)	-----	LL0,LL1,SS0,SS1
4	32337-ZT3-F30	MARK, RECEPTACLE	(1)	-----	LL0,LL1,SS0,SS1
5	91552-737-790	COLLAR, 6X6	(2)	-----	LL0,LL1,SS0,SS1
6	93500-04016-0G	SCREW, PAN, 4X16	(2)	-----	LL0,LL1,SS0,SS1

3

PART NO. INDEX

Part Number	Page	Ref.	Part Number	Page	Ref.	Part Number	Page	Ref.	Part Number	Page	Ref.	Part Number	Page	Ref.
87000			89000											
87101-ZT3-C32	50	1	89216-130-690	52	7	91651-ZT3-C00	49	22	95003-07016-31	38	27			
87114-ZT3-P90	50	2	89219-805-000	52	8				95003-07035-31	38	28			
87145-Z40-C90	51	25				93000			95701-06010-08	29	20			
87150-Z25-A61	50	3	90000											
87150-Z39-C61	51	24				93500-03005-0A	19	9						
87150-Z40-C70	50	4	90001-ZM7-000	23	7	93500-04006-0H	43	30	95701-06012-08	29	21			
87150-Z40-D30	50	4	90002-MC7-000	49	16	93500-04016-0G	53	6						
87150-Z40-D60	50	4	90003-892-000	19	7	93500-05008-3J	49	23						
87150-Z40-S50	50	4				93500-05016-0G	35	17						
87150-Z40-S70	50	4				93500-05016-3J	31	21	95701-06016-08	44	6			
87150-Z40-S80	50	4	90003-ZL0-D30	38	23				95701-06040-00	39	7			
87150-Z40-U10	50	5	90004-ZC3-000	39	6	93500-06100-0A	45	23	95701-06045-08	39	8			
87150-Z40-W10	50	5	90006-ZM7-000	20	5	93600-04012-0G	31	22						
87152-Z40-W70	50	6				93600-04020-1G	32	19	96000					
87501-ZT3-C31	50	7	90012-896-750	20	6	93891-04006-00	29	18						
87501-ZT3-C61	50	7	90014-KCZ-000	49	18	93891-05010-07	36	7	96001-06010-07	46	27			
87501-ZT3-C81	50	7	90019-883-000	42	21	93891-05016-07	46	24						
87501-ZT3-S50	50	7	90029-888-000	44	4	93891-05020-07	29	19	99000					
87511-ZT3-S20	50	8												
87525-ZT3-C60	50	9	90101-ZT3-000	42	22									
87525-ZT3-C70	50	9	90102-899-003	29	17									
87525-ZT3-C80	50	9												
87525-ZT3-S50	50	9				93891-06020-07	46	25	99101-ZG0-0520	38	29			
87525-ZT3-S70	50	9				93893-04010-18	38	24	99101-ZG0-0550	38	29			
87525-ZT3-S80	50	9	90102-Z07-003	45	19	93901-12220	49	24	99101-ZG0-0580	38	29			
87528-ZT3-C01	50	10	90102-ZT3-010	42	23	93901-12420	49	25	99204-ZE0-0350	38	30			
87531-ZT3-000	50	11	90103-ZT3-000	42	24	93903-25220	49	26						
87533-Z40-C90	51	26	90105-ZT3-000	49	19	93903-26320	49	27						
87539-ZT3-C41	50	12	90114-Z39-C30	45	20	93913-25520	40	19						
87539-ZT3-C60	51	13	90129-463-770	42	25									
87539-ZT3-S50	51	12	90196-MN5-000	36	6									
87539-ZT3-S70	51	12	90206-KM3-000	24	14	94000								
87539-ZT3-S80	50	12	90320-GE2-760	45	21									
87564-ZT3-C60	51	14	90380-GM9-740	52	10	94050-04000	31	24						
87564-ZT3-C70	51	15	90441-ZM7-000	21	4									
87564-ZT3-C80	51	14	90485-286-000	45	22	94050-05080	43	31						
87564-ZT3-D30	51	16	90551-033-000	43	26	94050-10080	49	29						
87564-ZT3-E60	51	14				94101-05000	31	25						
87564-ZT3-S50	51	16	90602-ZM7-000	21	5									
87564-ZT3-S70	51	17	90652-KT1-771	49	20									
87564-ZT3-S80	51	16	90672-SAO-003	47	7	94103-05800	49	30						
87564-ZT3-U10	51	16	90683-SAO-003	49	21	94103-06800	44	5						
87564-ZT3-W10	51	16	90851-ZC3-000	43	27	94111-05000	31	26						
87578-ZT3-C60	51	18												
87580-ZT3-C30	51	19	91000			94301-06100	21	6						
87580-ZT3-C61	51	19				94514-10150	46	26						
87580-ZT3-C80	51	19	91101-Z0G-003	19	8									
87580-ZT3-S51	51	19	91202-HC5-003	20	7	95000								
87580-ZT3-S70	51	19	91301-ZM7-003	20	8									
87580-ZT3-S80	51	19	91551-ZT3-000	43	28	95002-02080	40	20						
87583-ZT3-C71	51	20	91552-737-790	53	5	95002-40800-08	41	21						
87594-ZT3-010	51	21	91554-ZT3-000	43	29	95002-40850-08	41	22						
87596-ZT3-D30	51	22	91560-SE0-003	29	22	95002-41050-08	41	23						
87709-Z07-S50	51	23				95002-50000	41	24						
				31	29	95002-70000	41	25						
				30		95003-05019-31	38	25						
				32	18	95003-07005-31	38	26						

PART NAME INDEX

Part name	Page	Ref.	Part name	Page	Ref.	Part name	Page	Ref.
[A]			CAMSHAFT ASSY.	24	2	COVER, SOCKET	30	9
ADAPTER, RECEPTACLE	53	2	CAP ASSY., FUEL TANK	40	13	COVER, THROTTLE MOTOR	37	22
ARM, VALVE ROCKER	24	5	CAP ASSY., NOISE SUPPRESSOR ...	48	5	CRANKSHAFT COMP.	22	1
ARRESTER, SPARK	39	4	CAP ASSY., OIL FILLER	20	2	[D]		
[B]			CARBURETOR ASSY.	37	9	DIPPER, CONNECTING ROD	23	6
BAND A, HARNESS	29	22	CASE ASSY., OIL	20	1	DOWEL PIN, 6X10	21	6
		23	CASE, ADAPTER	53	3	[E]		
	31	29	CHAMBER SET, FLOAT	37	4	ELEMENT, AIR CLEANER	42	2
		30	CHOKE SET	37	8	EMBLEM	50	1
	32	18	CIRCLIP, EXTERNAL, 10MM	46	26	[F]		
	33	17	CLAMP A, CABLE	48	4	FAN, COOLING	44	1
	35	16	CLAMP D, HIGH TENSION CORD	37	17	FILTER COMP., FUEL	40	14
BAND, HARNESS	49	15	CLAMP, TUBE	41	21	FILTER, BREATHER	19	3
BAND, WIRE	49	20	CLIP	43	27	FLOAT SET	37	3
BARREL COMP., CYLINDER	19	1	CLIP, GOVERNOR HOLDER	21	5	[G]		
BED COMP., ENGINE	47	1	CLIP, PISTON PIN, 10MM	23	4	GASKET SET	37	1
BOLT, CONNECTING ROD	23	7	CLIP, TUBE	40	20	GASKET, EX. PIPE	39	3
BOLT, FLANGE, 5X10	36	6		41	24	GASKET, MUFFLER	39	5
	42	21	CLIP, WIRE HARNESS, 25MM	49	21	GRIP, STARTER	36	2
BOLT, FLANGE, 5X12	19	7	COCK ASSY., FUEL	40	5	GROMMET, GENERATOR CORD	49	22
	49	17	COIL ASSY., IGNITION	48	3	GUIDE, STARTER ROPE	36	5
	52	9	COIL COMP., PULSER	48	2	[H]		
BOLT, FLANGE, 5X14	20	6	COLLAR A, INSULATOR	47	3	HANDLE, BOX WRENCH	52	8
BOLT, FLANGE, 5X20	39	6	COLLAR B, INSULATOR	42	20	HARNESS ASSY., CONTROL WIRE ...	28	10
BOLT, FLANGE, 5X23	20	5	COLLAR C, INSULATOR	47	4		30	11
	21	3	COLLAR D, INSULATOR	42	18		32	10
BOLT, FLANGE, 5X25	49	18	COLLAR, 6X6	53	5		33	10
BOLT, FLANGE, 5X8	49	16	COLLAR, AIR CLEANER CASE	43	28		35	8
BOLT, FLANGE, 6X10	29	20	COLLAR, CONTROL COVER	45	1	HARNESS ASSY., GENERATOR WIRE -	48	10
	31	27	COLLAR, DISTANCE	43	29	HARNESS ASSY., SUB WIRE	28	7
	32	22	COLLAR, LIFTER	24	12		30	7
	34	19	COLLAR, REFLECTOR SETTING	42	25		32	7
	35	22	CONSENT ASSY.	28	11	HOLDER, GOVERNOR WEIGHT	21	2
	46	27	CONSENT COMP., D.C.	28	5	[I]		
BOLT, FLANGE, 6X12	29	21		30	5	INSULATOR, CARBURETOR	37	13
	31	28		32	5	INSULATOR, ENGINE BED	47	2
	32	23		33	5	INSULATOR, SHROUD	42	19
	34	20	CONSENT KIT	53	1	INVERTER UNIT	28	2
BOLT, FLANGE, 6X16	44	4	CORD ASSY., CHARGE	52	4		30	2
		6	CORD, IGNITION EARTH	48	9		32	2
	47	5	COVER ASSY., FR.	45	15		33	2
BOLT, FLANGE, 6X40	39	7	COVER ASSY., MAINTENANCE	45	4		35	2
BOLT, FLANGE, 6X45	39	8	COVER ASSY., PLUG CHECK	45	12		35	2
BOLT, STUD	42	22	COVER COMP., AIR CLEANER	42	3		35	2
		24	COVER COMP., CRANKCASE SIDE ...	21	1			
BOLT, STUD, 5X93	42	23	COVER COMP., FAN	42	10			
BOSS, COOLING FAN	44	2	COVER COMP., L. SIDE	45	11			
BRACKET, WIRE HARNESS CLIP ...	48	8	COVER COMP., R. SIDE	45	8			
			COVER, AIR CLEANER	42	4			
[C]			COVER, CONTROL PANEL	28	14			
CABLE, EARTH	28	15		31	17			
	31	18		32	14			
	32	15	COVER, GRIP	33	13			
	33	14	COVER, HEAD	35	12			
	35	14		36	4			
				19	2			

PART NAME INDEX

Part name	Page	Ref.	Part name	Page	Ref.	Part name	Page	Ref.
[J]			NUT, FLANGE, 4MM	31	24	ROTOR COMP.	48	7
JET SET, PILOT, #35	38	30		32	21	RUBBER A, INVERTER	28	3
JET, MAIN, #52	38	29	NUT, FLANGE, 5MM	43	31		30	3
JET, MAIN, #55	38	29	NUT, SPRING, 5MM	45	21		32	3
JET, MAIN, #58	38	29	NUT, TAPPET ADJUSTING	24	14		33	3
JOINT COMP., AIR INTAKE	42	9	[O]				35	3
JOINT, AIR VENT TUBE	37	10				RUBBER A, SUPPORTER	40	2
[K]			OIL SEAL, 17X27X5	20	7	RUBBER A, TANK MOUNTING	40	10
			O-RING, 34.6X2.5	20	8	RUBBER B, INVERTER	28	4
[L]			[P]				30	4
KEY, SPECIAL	48	1					32	4
KNOB, ENGINE SWITCH	48	13	[P]				33	4
	49	13	PACKING, AIR INTAKE JOINT	37	16		35	4
[M]			PACKING, CARBURETOR	37	15	RUBBER B, SUPPORTER	40	3
			PACKING, INSULATOR	37	14	RUBBER L, TANK MOUNTING	40	12
LABEL, A.C. RESET	51	20	PACKING, OIL FILLER CAP	20	3	RUBBER R, TANK MOUNTING	40	11
LABEL, NOISE LEVEL	51	18	PACKING, OIL FILLER CAP	20	3	RUBBER, AIR CLEANER	42	5
LABEL, WARNING	50	2	PACKING, RECEPTACLE	30	13	RUBBER, BOTTOM	45	18
LEVER, LINK	37	19	PANEL COMP., CONTROL	35	10	RUBBER, OIL CHECK	42	17
LIFTER, VALVE	24	10		28	12	[S]		
				30	15			
				32	12	SCREW-WASHER, 3X8	38	23
				33	12	SCREW-WASHER, 4X10	38	24
			PANEL, CONTROL	28	13	SCREW-WASHER, 4X6	29	18
				30	16	SCREW-WASHER, 5X10	36	7
MARK, A.C. CAUTION	51	14		32	13	SCREW-WASHER, 5X16	46	24
		15		35	11	SCREW-WASHER, 5X20	29	19
		16	PIN, PISTON, 10X33	23	3		31	23
		17	PIPE, EX.	39	2		32	20
MARK, CAUTION	50	3	PISTON	23	2		33	18
		4	PIVOT, ROCKER ARM	24	7		35	19
		5	PLATE SET, CONSENT	35	5	SCREW-WASHER, 6X20	46	25
	51	24	PLATE, ENGINE SWITCH	49	14	SCREW SET	37	7
MARK, CAUTION VOLTAGE	50	8	PLATE, STOPPER	19	5	SCREW SET, DRAIN	37	6
MARK, CHOKE	50	10	PLUG ASSY., CONSENT	52	2	SCREW SET, PILOT	37	5
MARK, CIRCUIT PROTECTOR	51	19			3	SCREW, FLAT, 4X12	31	22
MARK, CONTROL PANEL	35	13	PLUG, SPARK	19	6	SCREW, FLAT, 4X20	32	19
MARK, D.C. CAUTION	50	9	PROTECTOR COMP., MUFFLER	45	2	SCREW, FR. COVER	45	20
MARK, ENGINE SWITCH	50	7	PULLEY, RECOIL STARTER	44	3	SCREW, PAN, 3X5	19	9
MARK, EX. CAUTION	50	12	PUMP ASSY., FUEL	40	1	SCREW, PAN, 4X16	53	6
	51	12	[R]			SCREW, PAN, 4X19	49	19
		13				SCREW, PAN, 4X6	43	30
MARK, HONDA	50	11	RECEPTACLE	30	12	SCREW, PAN, 5X12	29	17
MARK, INDICATOR	51	26		33	11		31	20
MARK, OIL CAUTION	51	21		35	9	SCREW, PAN, 5X16	31	21
MARK, OIL CHECK	51	22	RECTIFIER ASSY.	28	6		35	17
MARK, RECEPTACLE	53	4		30	6		37	18
MARK, RECYCLE	51	23		32	6	SCREW, PAN, 5X8	49	23
MARK, SPEC	50	6	RETAINER, VALVE SPRING	24	13	SCREW, PAN, 6X100	45	23
MARK, STRIPE	51	25	RING SET, PISTON	23	1	SCREW, SPECIAL, 6X15	52	10
MOTOR ASSY., THROTTLE CONTROL	37	18	ROD ASSY., CONNECTING	23	5	SCREW, SPECIAL, 6X16	45	19
MOTOR COMP., THROTTLE CONTROL	37	21	ROD, PUSH	24	4	SCREW, TAPPING, 3X10	49	24
MUFFLER COMP.	39	1	ROLLER	24	3	SCREW, TAPPING, 3X16	49	25
[N]				33	6	SCREW, TAPPING, 5X12	49	26
NOZZLE, MAIN	37	12	ROLLER, 6X14.8	19	8	SCREW, TAPPING, 5X20	40	19
NUT, FENDER SETTING	52	6	ROPE, RECOIL STARTER	36	3		49	28
NUT, FLANGE, 10MM	49	29						



PART NAME INDEX

Part name	Page	Ref.	Part name	Page	Ref.	Part name	Page	Ref.
SCREW, TAPPING, 6X20	49	27	TUBE, BREATHER	42	1			
SCREW, THROTTLE STOP	37	11	TUBE, DIAPHRAGM	40	4			
SEAL A, AIR CLEANER COVER	42	6	TUBE, FUEL TANK	40	16			
SEAL A, MAINTENANCE COVER	45	6	TUBE, VINYL, 3.5X6.5X190	38	25			
SEAL A, SHROUD	42	15	TUBE, VINYL, 4X7X160	38	27			
SEAL A, SIDE COVER	45	9	TUBE, VINYL, 4X7X350	38	28			
SEAL B, AIR CLEANER COVER	42	7	TUBE, VINYL, 4X7X50	38	26			
SEAL B, MAINTENANCE COVER	45	7						
SEAL B, SHROUD	42	16	[V]					
SEAL B, SIDE COVER	45	10	VALVE SET, FLOAT	37	2			
SEAL RUBBER, PROTECTOR	45	3	VALVE, EX.	24	9			
SEAL, CONSENT	30	14	VALVE, IN.	24	8			
SEAL, FR. COVER	45	17	VALVE, OIL OUTLET	19	4			
SEAL, FUEL FILLER NECK	40	8						
		9	[W]					
SEAL, PLUG CHECK	45	13	WASHER, 4.2X13	21	4			
SEAL, VALVE STEM	24	1	WASHER, 6MM	45	22			
SHEET, WATER PROOF	28	8	WASHER, PLAIN, 5MM	31	25			
		30		35	20			
		32		43	32			
		33		49	30			
		35		44	5			
SHROUD ASSY., L.	42	13	WASHER, PLAIN, 6MM	31	26			
SHROUD ASSY., R.	42	11	WASHER, SPRING, 5MM	35	21			
SHROUD, L.	42	14	WASHER, SPROCKET SETTING	43	26			
SHROUD, R.	42	12		47	6			
SOCKET	32	11	WRENCH, SPARK PLUG	52	7			
SOCKET, COMPOSITE	28	9						
	30	10						
	32	9						
	33	9						
SPARK UNIT	28	1						
	30	1						
	32	1						
	33	1						
	35	1						
	52	1						
SPRING, COMPRESSION COIL	37	20						
SPRING, VALVE	24	11						
STARTER ASSY., RECOIL	36	1						
STATOR ASSY.	48	6						
STATOR COMP.	49	31						
STRAINER, FUEL	40	6						
STRAP, CABLE, 118MM	47	7						
SUB CORD ASSY.	48	11						
SWITCH ASSY., ENGINE STOP	48	12						
SWITCH ASSY., OIL LEVEL	20	4						
SWITCH COMP., AUTO-THROTTLE ..	29	16						
	31	19						
	32	16						
	33	15						
	35	15						
[T]								
TANK, FUEL	40	7						
TUBE A, FUEL	40	17						
TUBE B, FUEL	40	18						
TUBE, AIR CLEANER CONNECTING ..	42	8						

1

FOREWORD INDEX

2

ENGINE GROUP

3

FRAME GROUP

4

PART NUMBER INDEX

5

PART NAME INDEX

HONDA
The Power of Dreams



PARTS CATALOGUE NEWS

Service Technology Department, Power Products Operations
 Service Division, Honda Motor Co., Ltd.

PARTS CATALOGUE - CORRECTED

Printed in Japan

CODE NO.	13Z40E02
PARTS CATALOGUE NEWS	EU10iT1
NEWS NO.	001

Block No.	Ref. No.	Note	Part No.	Description	Reqd. QTY		Serial No.	Parts catalogue code
					EU	10iT1		
F-31	18	L	87578-ZT3-C60	LABEL, NOISE LEVEL (87).....	1		----- 1040119	B, CL, F, G, GW1, W
	24	T	87150-Z39-C61	MARK, CAUTION (EC).....	1		-----	B2
						1	1040120	----- B, CL, F, G, GW1, W

NOTE A:PART NO. CHANGE D:NEWLY PROVIDED E:PART NO. DELETION K:REQUIRED NO. CORRECTION L:APPLICATION SERIAL NO. CORRECTION
 M:PART DESCRIPTION CORRECTION T:APPLICATION CORRECTION Z:REMARKS CHANGE



PARTS CATALOGUE NEWS

Service Technology Department, Power Products Operations
Service Division, Honda Motor Co., Ltd.

Printed in Japan

CODE NO.	13Z40E02
PARTS CATALOGUE NEWS	EU10iT1
NEWS NO.	002

EU10iT1-RA TYPE sales parts information

NOTE: This Parts Catalogue News explains only the parts of the different model that are produced to conform to addition of the EU10iT1-RA type.

As for the parts not listed on this Parts Catalogue News, use the parts of the EU10iT1-B2 type.

•Models, parts catalogue codes and applicable serial numbers

Model	Type		Parts catalogue type	Engine		Applicable engine serial No.	Applicable frame serial No.	Applicable carburetor identification No.
				Model	Type			
EU10iT1	B2	Base type	B2	GXH50T	ED7	GCBWT-1000001~	EAAT-1000001~	BF30C G
	RA	Additional type	RA		ED3			

BOOKNo. : 13Z40E02

•Features of each type		Base type	Additional type
Specifications		EU10iT1	
		B2	RA
Frequency	50Hz	●	●
	60Hz		
Consent	10A/250V		●
	10/16A-250V		
	13A/250V		
	15A/125V		
	15A/250V		
	16A/130V	●	
	16A/250V		
	20A/250V		

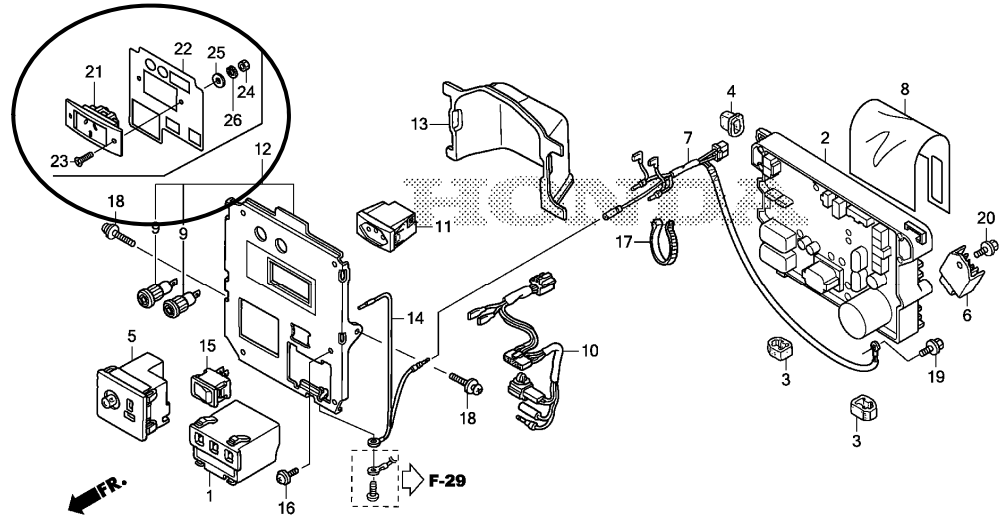
NOTE A:PART NO. CHANGE D:NEWLY PROVIDED E:PART NO. DELETION K:REQUIRED NO. CORRECTION L:APPLICATION SERIAL NO. CORRECTION
M:PART DESCRIPTION CORRECTION T:APPLICATION CORRECTION Z:REMARKS CHANGE

BOOKNo. : 13Z40E02

Block No.	Ref. No.	Part No.	Description	Reqd. QTY EU 10i TI	Base Part No.	Parts catalogue code
-----------	----------	----------	-------------	------------------------------	---------------	----------------------

F-3-3 CONTROL PANEL (4)

Ref. No.	(Relative ref. Number) LON Description	FRT
11	(21) 6221D5 RECEPTACLE/CONSENT, CONTROL PANEL	0.4



Z403F0303A

F-3-3	1	30400-ZT3-C02	SPARK UNIT.	1		RA
	2	31310-ZT3-F62	INVERTER UNIT.	1		RA
	3	31319-ZT3-000	RUBBER A, INVERTER.....	2		RA
	4	31324-ZT3-000	RUBBER B, INVERTER.....	1		RA
	5	31460-ZT3-C01	CONSENT COMP., D. C.....	1		RA
	6	31710-ZS9-A02	RECTIFIER ASSY.	1		RA
	7	32105-Z40-C20	HARNESS ASSY., SUB WIRE.....	1		RA
	8	32118-ZT3-P10	SHEET, WATER PROOF.....	1		RA
	9	32139-ZC3-G01	SOCKET, COMPOSITE.	2		RA
	10	32150-Z40-C20	HARNESS ASSY., CONTROL WIRE...	1		RA
	12	32345-Z40-C20	PANEL COMP., CONTROL.....	1		RA
	13	32351-ZT3-000	COVER, CONTROL PANEL.....	1		RA

NOTE A:PART NO. CHANGE D:NEWLY PROVIDED E:PART NO. DELETION K:REQUIRED NO. CORRECTION L:APPLICATION SERIAL NO. CORRECTION
M:PART DESCRIPTION CORRECTION T:APPLICATION CORRECTION Z:REMARKS CHANGE

PARTS CATALOGUE NEWS

BOOKNo. : 13Z40E02

Block No.	Ref. No.	Part No.	Description	Reqd. QTY	Base Part No.	Parts catalogue code
				EU 10i TI		
	14	32601-ZT3-S21	CABLE, EARTH.....	1	RA	
	15	36214-Z11-A01	SWITCH COMP., AUTO-THROTTLE (OTAX)	1	RA	
	16	90102-899-003	SCREW, PAN, 5X12.....	1	RA	
	17	91560-SE0-003	BAND A, HARNESS (NATURAL).....	1	RA	
	18	93891-05020-07	SCREW-WASHER, 5X20.....	2	RA	
	19	95701-06010-08	BOLT, FLANGE, 6X10.....	1	RA	
	20	95701-06012-08	BOLT, FLANGE, 6X12.....	1	RA	
	21	32330-Z36-R20	RECEPTACLE (10A/250V).....	1	RA	
	22	32366-Z40-C20	MARK, CONTROL PANEL.....	1	RA	
	23	90101-Z36-R20	SCREW, FLAT, 3X12.....	2	RA	
	24	94001-03080-0S	NUT, HEX., 3MM.....	2	RA	
	25	94101-03800	WASHER, PLAIN, 3MM.....	2	RA	
	26	94111-03800	WASHER, SPRING, 3MM.....	2	RA	
F-3-4	1		SPARK UNIT.....	0	30400-ZT3-C02	RA
	2		INVERTER UNIT.....	0	31310-Z40-C91	RA
	3		RUBBER A, INVERTER.....	0	31319-ZT3-000	RA
	4		RUBBER B, INVERTER.....	0	31324-ZT3-000	RA
	5		PLATE SET, CONSENT.....	0	31426-Z39-C90	RA
	6		HARNESS ASSY., SUB WIRE.....	0	32105-Z40-C90	RA
	7		SHEET, WATER PROOF.....	0	32118-ZT3-P10	RA
	8		HARNESS ASSY., CONTROL WIRE...	0	32150-Z40-C90	RA
	9		RECEPTACLE (16A/130V).....	0	32330-Z39-C90	RA
	10		PACKING, RECEPTACLE.....	0	32335-Z39-C90	RA
	11		PANEL, CONTROL.....	0	32346-Z40-C90	RA

NOTE A:PART NO. CHANGE D:NEWLY PROVIDED E:PART NO. DELETION K:REQUIRED NO. CORRECTION L:APPLICATION SERIAL NO. CORRECTION
M:PART DESCRIPTION CORRECTION T:APPLICATION CORRECTION Z:REMARKS CHANGE

PARTS CATALOGUE NEWS

BOOKNo. : 13Z40E02

Block No.	Ref. No.	Part No.	Description	Reqd. QTY		Base Part No.	Parts catalogue code
				EU	TI		
	12		COVER, CONTROL PANEL.....	0		32351-ZT3-000	RA
	13		MARK, CONTROL PANEL.....	0		32366-Z40-C90	RA
	14		CABLE, EARTH.....	0		32601-ZT3-S21	RA
	15		SWITCH COMP., AUTO-THROTTLE (OTAX)	0		36214-Z11-A01	RA
	16		BAND A, HARNESS (NATURAL).....	0		91560-SE0-003	RA
	17		SCREW, PAN, 5X16.....	0		93500-05016-0G	RA
	18		SCREW, PAN, 5X16.....	0		93500-05016-3J	RA
	19		SCREW-WASHER, 5X20.....	0		93891-05020-07	RA
	20		WASHER, PLAIN, 5MM.....	0		94101-05000	RA
	21		WASHER, SPRING, 5MM.....	0		94111-05000	RA
	22		BOLT, FLANGE, 6X10.....	0		95701-06010-08	RA
F-23	2	18320-ZT3-000	PROTECTOR COMP., MUFFLER.....	1		18320-ZT3-C60	RA
F-29	6	31120-ZT3-E71	STATOR ASSY.....	1			RA
	10	32158-ZT3-E71	HARNESS ASSY., GENERATOR WIRE.	1		32158-Z40-C91	RA
	31		STATOR COMP.....	0		31125-Z40-C91	RA
F-31	7	87501-Z40-C20	MARK, ENGINE SWITCH.....	1		87501-ZT3-C61	RA
	19	87580-Z40-C20	MARK, CIRCUIT PROTECTOR.....	1			RA
	25		MARK, STRIPE.....	0		87145-Z40-C90	RA
	26		MARK, INDICATOR.....	0		87533-Z40-C90	RA
F-32	4	32650-892-013	CORD ASSY., CHARGE (2M).....	(1)			RA
	5	32651-892-003	PLUG ASSY., CONSENT.....	(1)			RA

NOTE A:PART NO. CHANGE D:NEWLY PROVIDED E:PART NO.DELETION K:REQUIRED NO. CORRECTION L:APPLICATION SERIAL NO. CORRECTION
M:PART DESCRIPTION CORRECTION T:APPLICATION CORRECTION Z:REMARKS CHANGE



PARTS CATALOGUE NEWS

Service Technology Department, Power Products Operations
 Service Division, Honda Motor Co., Ltd.

PARTS CATALOGUE - CORRECTED

Printed in Japan

CODE NO.	13Z40E02
PARTS CATALOGUE NEWS	EU10iT1
NEWS NO.	003

Block No.	Ref. No.	Note	Part No.	Description	Reqd. QTY	Serial No.	Parts catalogue code
					EU 10i T1		
E-9	8	E	14711-ZM7-000	*PART NO. DELETION			
		T	14711-ZM7-010	VALVE, IN.....	1		
	9	E	14721-ZM7-000	*PART NO. DELETION			
		T	14721-ZM7-010	VALVE, EX.....	1		

NOTE A:PART NO. CHANGE D:NEWLY PROVIDED E:PART NO. DELETION K:REQUIRED NO. CORRECTION L:APPLICATION SERIAL NO. CORRECTION
 M:PART DESCRIPTION CORRECTION T:APPLICATION CORRECTION Z:REMARKS CHANGE



PARTS CATALOGUE NEWS

Service Technology Department, Power Products Operations
Service Division, Honda Motor Co., Ltd.

PARTS CATALOGUE - CORRECTED

Printed in Japan

CODE NO.	13Z40E02
PARTS CATALOGUE NEWS	EU10iT1
NEWS NO.	004

Block No.	Ref. No.	Note	Part No.	Description	Reqd. QTY		Serial No.	Parts catalogue code
					EU	10iT1		
F-3	7	E	32105-ZT3-E60	*PART NO. DELETION				
		D	32105-ZT3-E61	HARNESS ASSY., SUB WIRE.....	1	-----	-----	RH
		E	32105-ZT3-L30	*PART NO. DELETION				
		D	32105-ZT3-L31	1	-----	-----	LLO
F-3-1	7	E	32105-ZT3-E60	*PART NO. DELETION				
		D	32105-ZT3-E61	HARNESS ASSY., SUB WIRE.....	1	-----	-----	B, CL, F, G, GW1, RG, W
F-31	4	E	87150-Z40-S50	*PART NO. DELETION				
		D	87150-Z40-S51	MARK, CAUTION.....	1	-----	-----	RH
	6	E	87152-Z40-W70	*PART NO. DELETION				
		D	87152-Z40-W71	MARK, SPEC.....	1	-----	-----	RG

NOTE A:PART NO. CHANGE D:NEWLY PROVIDED E:PART NO. DELETION K:REQUIRED NO. CORRECTION L:APPLICATION SERIAL NO. CORRECTION
M:PART DESCRIPTION CORRECTION T:APPLICATION CORRECTION Z:REMARKS CHANGE

March 10, 2018



PARTS CATALOGUE NEWS

Service Technology Department, Power Products Operations
Service Division, Honda Motor Co., Ltd.

Printed in Japan

CODE NO.	13Z40E02
PARTS CATALOGUE NEWS	EU10iT1
NEWS NO.	005

EU10iT1-U4 TYPE sales parts information

NOTE: This Parts Catalogue News explains only the parts of the different model that are produced to conform to addition of the EU10iT1-U4 type.

As for the parts not listed on this Parts Catalogue News, use the parts of the EU10iT1-U type.

•Models, parts catalogue codes and applicable serial numbers

Model	Type		Parts catalogue type	Engine		Applicable engine serial No.	Applicable frame serial No.	Applicable carburetor identification No.
				Model	Type			
EU10iT1	U	Base type	U	GXH50T	ED3	GCBWT-1000001~	EAAT-1000001~	BF30C G
	U4	Additional type	U4		ED7			

NOTE A:PART NO. CHANGE D:NEWLY PROVIDED E:PART NO. DELETION K:REQUIRED NO. CORRECTION L:APPLICATION SERIAL NO. CORRECTION
M:PART DESCRIPTION CORRECTION T:APPLICATION CORRECTION Z:REMARKS CHANGE

•Features of each type		Base type	Additional type
Specifications	Model	EU10iT1	
	Type	U	U4
Frequency	50Hz	●	●
	60Hz		
Consent	10A/250V		
	10/16A-250V		
	13A/250V		
	15A/125V		
	15A/250V	●	●
	16A/130V		
	16A/250V		
	20A/250V		

January 17, 2019

HONDA PARTS CATALOGUE NEWS

**Service Information Department, Power Product Operations
Service Division, Honda Motor Co., Ltd.**

CODE NO.	13Z40E02
PARTS CATALOGUE NEWS	EU10iT1
NEWS NO.	006

EU10iT1-B/A, B2/A, CL/A, F/A, GW1/A, RG/A, U4/A and W/A TYPES sales parts information

NOTE: This Parts Catalogue News explains only the parts of the different model that are produced to conform to addition of the EU10iT1-B/A, B2/A, CL/A, F/A, GW1/A, RG/A, U4/A and W/A types.

As for the parts not listed on this Parts Catalogue News, use the parts of the EU10iT1-B, B2, CL, F, GW1, RG U4 and W types.

•Models, parts catalogue codes and applicable serial numbers

Model	Type		Parts catalogue type	Engine		Applicable engine serial No.	Applicable frame serial No.	Applicable carburetor identification No.		
				Model	Type					
EU10iT1	B	Base type	B	GXH50T	ED7	GCBWT-1000001~1999999	EAAT-1000001~1999999	BF30C G		
		Additional type	B/A			GCBWT-2000001~	EAAT-2000001~			
	B2	Base type	B2			GCBWT-1000001~1999999	EAAT-1000001~1999999			
		Additional type	B2/A			GCBWT-2000001~	EAAT-2000001~			
	CL	Base type	CL			GCBWT-1000001~1999999	EAAT-1000001~1999999			
		Additional type	CL/A			GCBWT-2000001~	EAAT-2000001~			
	F	Base type	F			GCBWT-1000001~1999999	EAAT-1000001~1999999			
		Additional type	F/A			GCBWT-2000001~	EAAT-2000001~			
	GW1	Base type	GW1		GCBWT-1000001~1999999	EAAT-1000001~1999999				
		Additional type	GW1/A		GCBWT-2000001~	EAAT-2000001~				
	RG	Base type	RG		GCBWT-1000001~1999999	EAAT-1000001~1999999				
		Additional type	RG/A		GCBWT-2000001~	EAAT-2000001~				
	U4	Base type	U4		GCBWT-1000001~1999999	EAAT-1000001~1999999				
		Additional type	U4/A		GCBWT-2000001~	EAAT-2000001~				
	W	Base type	W		GCBWT-1000001~1999999	EAAT-1000001~1999999				
		Additional type	W/A		GCBWT-2000001~	EAAT-2000001~				
						EU4	GCBWT-1000001~1999999		EAAT-1000001~1999999	
							GCBWT-2000001~		EAAT-2000001~	
				ED7	GCBWT-1000001~1999999	EAAT-1000001~1999999				
					GCBWT-2000001~	EAAT-2000001~				
					GCBWT-1000001~1999999	EAAT-1000001~1999999				
					GCBWT-2000001~	EAAT-2000001~				

PARTS CATALOGUE NEWS

BOOKNo. : 13Z40E02

Block No.	Ref. No.	Part No.	Description	Reqd. QTY	Base Part No.	Parts catalogue code
				EU 10i TI		
E-9	13	14771-ZDF-000	RETAINER, VALVE SPRING.....	2	14771-ZM3-010	B/A, B2/A, CL/A, F/A, GW1/A, RG/A, U4/A, W/A
F-3-1	12	32331-Z07-D51	RECEPTACLE (10/16A-250V).....	1	32331-Z07-D50	F/A
F-3-4	2	31310-Z40-C92	INVERTER UNIT.....	1	31310-Z40-C91	B2/A

NOTE A:PART NO. CHANGE D:NEWLY PROVIDED E:PART NO. DELETION K:REQUIRED NO. CORRECTION L:APPLICATION SERIAL NO. CORRECTION
M:PART DESCRIPTION CORRECTION T:APPLICATION CORRECTION Z:REMARKS CHANGE

HONDA PARTS CATALOGUE NEWS

PARTS CATALOGUE - CORRECTED

CODE NO.	13Z40E02
PARTS CATALOGUE NEWS	EU10iT1
NEWS NO.	007

Block No.	Ref. No.	Note	Part No.	Description	Reqd. QTY	Serial No.	Parts catalogue code
F-3	2		31310-ZT3-D22	INVERTER UNIT.....	1	----- 1101224	RR0
		A	31310-ZT3-D23	1	1101225 -----	RR0
			31310-ZT3-E62	1	----- 1100942	RH
		A	31310-ZT3-E63	1	1100943 -----	RH
F-3-1	2	L	31310-ZT3-E62	INVERTER UNIT.....	1	----- 1100942	B, CL, F, G, GW1, RG, W
		T	31310-ZT3-E63	1	----- -----	B/A, CL/A, F/A, GW1/A, RG/A, W/A
					1	1100943 -----	B, CL, F, G, GW1, RG, W
F-3-2	2	L	31310-ZT3-E82	INVERTER UNIT.....	1	----- 1101249	U
		T	31310-ZT3-E83	1	----- -----	U4, U4/A
					1	1101250 -----	U

NOTE A:PART NO. CHANGE D:NEWLY PROVIDED E:PART NO. DELETION K:REQUIRED NO. CORRECTION L:APPLICATION SERIAL NO. CORRECTION
M:PART DESCRIPTION CORRECTION T:APPLICATION CORRECTION Z:REMARKS CHANGE

HONDA PARTS CATALOGUE NEWS

PARTS CATALOGUE - CORRECTED

CODE NO.	13Z40E02
PARTS CATALOGUE NEWS	EU10iT1
NEWS NO.	008

Block No.	Ref. No.	Note	Part No.	Description	Reqd. QTY	Serial No.	Parts catalogue code	
					EU 10i T1			
F-3	10		32150-ZT3-E61	HARNESS ASSY., CONTROL WIRE...	1	----- 1057366	RH	
			32150-ZT3-E71	1	----- 1039241	SS0	
					1	----- 1048479	SS1	
			32150-ZT3-E81	1	----- 1041648	RR1	
					1	----- 1042521	RR0	
			32150-ZT3-P11	1	----- 1042551	LL1, LT	
					1	----- 1058990	LL0	
			A	32150-ZT3-E60	1	1057367 -----	RH
			A	32150-ZT3-E70	1	1039242 -----	SS0
						1	1048480 -----	SS1
			A	32150-ZT3-E80	1	1041649 -----	RR1
						1	1042522 -----	RR0
			A	32150-ZT3-P10	1	1042552 -----	LL1, LT
						1	1058991 -----	LL0
	22	L	91560-SE0-003	BAND A, HARNESS (NATURAL).....	1	----- 1003922	RR0, RR1, SS0, SS1	
	23	L	91560-SE0-003	BAND A, HARNESS (NATURAL).....	1	-----	RR0, SS0	

NOTE A:PART NO. CHANGE D:NEWLY PROVIDED E:PART NO. DELETION K:REQUIRED NO. CORRECTION L:APPLICATION SERIAL NO. CORRECTION
M:PART DESCRIPTION CORRECTION T:APPLICATION CORRECTION Z:REMARKS CHANGE

PARTS CATALOGUE NEWS

BOOKNo. : 13Z40E02

Block No.	Ref. No.	Note	Part No.	Description	Reqd. QTY		Serial No.	Parts catalogue code
					EU	10i		
					1		1003922	RH, RR1, SS1
F-3-1	11	T	32150-ZT3-E61	HARNESS ASSY., CONTROL WIRE...	1		1055158	B
					1		1055030	CL, G
					1		1055046	F
					1		1055336	GW1
					1		1057994	RG
					1		1055078	W
			32150-ZT3-E71	1		1041801	SK1
		D	32150-ZT3-E60	1			B/A, CL/A, F/A, GW1/A, RG/A, W/A
					1		1055159	B
					1		1055031	CL, G
					1		1055047	F
					1		1055337	GW1
					1		1057995	RG
					1		1055079	W
		A	32150-ZT3-E70	1		1041802	SK1
	29	T	91560-SE0-003	BAND A, HARNESS (NATURAL).....	1			B, B/A, CL, CL/A, F, F/A, G, GW1, GW1/A, RG, RG/A, W, W/A
					1		1003922	SK1
					1		1014581	SK1
F-3-2	10	L	32150-ZT3-E81	HARNESS ASSY., CONTROL WIRE...	1		1041993	U
		T	32150-ZT3-E80	1			U4, U4/A
					1		1041994	U
F-3-3	10		32150-ZT3-E71	HARNESS ASSY., CONTROL WIRE...	1		1040279	SB
			32150-ZT3-P11	1		1041200	LB

NOTE A:PART NO. CHANGE D:NEWLY PROVIDED E:PART NO. DELETION K:REQUIRED NO. CORRECTION L:APPLICATION SERIAL NO. CORRECTION
M:PART DESCRIPTION CORRECTION T:APPLICATION CORRECTION Z:REMARKS CHANGE

PARTS CATALOGUE NEWS

BOOKNo. : 13Z40E02

Block No.	Ref. No.	Note	Part No.	Description	Reqd. QTY		Serial No.	Parts catalogue code
					EU	10i		
		A	32150-ZT3-E70	1		1040280 -----	SB
		A	32150-ZT3-P10	1		1041201 -----	LB
F-16	8	E	17514-Z07-000	*PART NO. DELETION				
		D	17514-Z07-R30	SEAL, FUEL FILLER NECK.....	1		-----	HP1
	13		17620-ZT3-030	CAP ASSY., FUEL TANK.....	1		-----	B, B/A, B2, B2/A, CL, CL/A, F, F/A, G, GW1, GW1/A, LB, LLO, LL1, LT, RA RG, RG/A, RRO, RR1, SB, SK1, SSO, SS1, U, U4, U4/A, W, W/A
					1		----- 1004378	RH
		A	17620-Z39-S70	1		1004379 -----	RH
F-31	4	D	87150-Z40-C81	MARK, CAUTION.....	1		-----	U4, U4/A
					1		1023343 -----	U
	7		87501-ZT3-S50	MARK, ENGINE SWITCH.....	1		----- 1057366	RH
		A	87501-ZT3-S51	1		1057367 -----	RH
	9		87525-ZT3-S50	MARK, D. C. CAUTION.....	1		----- 1057366	RH
		A	87525-ZT3-S51	1		1057367 -----	RH
	19		87580-ZT3-S51	MARK, CIRCUIT PROTECTOR.....	1		----- 1057366	RH
		A	87580-ZT3-S52	1		1057367 -----	RH
	22	L	87596-ZT3-D30	MARK, OIL CHECK.....	1		-----	LLO, LL1, LT, RRO, RR1
					1		----- 1057366	RH
	23	T	87709-Z07-S50	MARK, RECYCLE.....	1		-----	B, B/A, B2, B2/A, F, F/A, G, GW1, GW1/A, W, W/A

NOTE A:PART NO. CHANGE D:NEWLY PROVIDED E:PART NO. DELETION K:REQUIRED NO. CORRECTION L:APPLICATION SERIAL NO. CORRECTION
M:PART DESCRIPTION CORRECTION T:APPLICATION CORRECTION Z:REMARKS CHANGE

HONDA PARTS CATALOGUE NEWS

PARTS CATALOGUE - CORRECTED

CODE NO.	13Z40E02
PARTS CATALOGUE NEWS	EU10iT1
NEWS NO.	009

Block No.	Ref. No.	Note	Part No.	Description	Reqd. QTY	Serial No.	Parts catalogue code
E-9	13	E	14771-ZM3-010	*PART NO. DELETION			
		T	14771-ZDF-000	RETAINER, VALVE SPRING.	2		
F-3-1	12	L	32331-Z07-D50	RECEPTACLE(10/16A-250V).....	1	----- 1042577	F
		T	32331-Z07-D51	1	1042578 -----	F
					1	----- -----	F/A

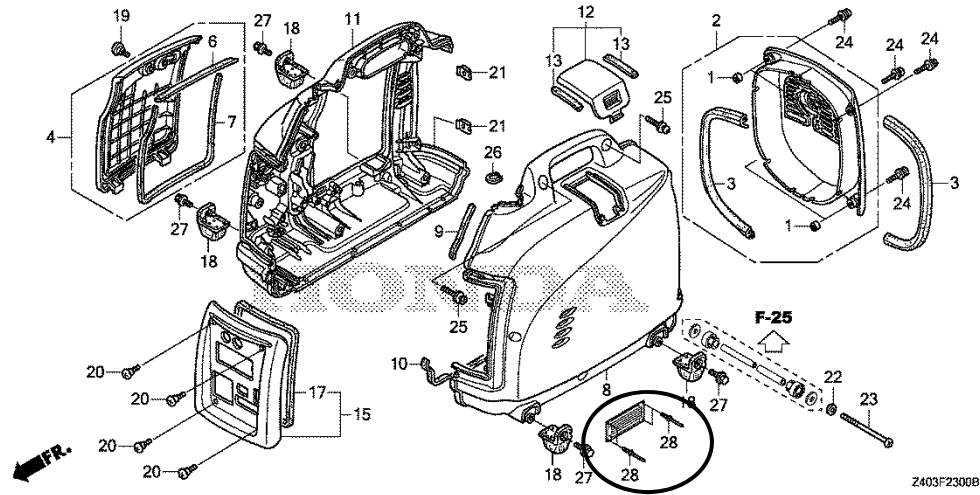
NOTE A:PART NO. CHANGE D:NEWLY PROVIDED E:PART NO. DELETION K:REQUIRED NO. CORRECTION L:APPLICATION SERIAL NO. CORRECTION
M:PART DESCRIPTION CORRECTION T:APPLICATION CORRECTION Z:REMARKS CHANGE

PARTS CATALOGUE NEWS

BOOKNo. : 13Z40E02

Block No.	Ref. No.	Note	Part No.	Description	Reqd. QTY	Serial No.	Parts catalogue code
					EU 10i T1		

F-23 FRONT COVER/SIDE COVER



F-23	8		63210-ZT3-C02	COVER COMP., R. SIDE.....	1	-----	B, B/A, B2, B2/A, CL, CL/A, F, F/A, G, GW1, GW1/A, LB, LLO, LL1, LT, RA, RG RG/A, RRO, RR1, SB, SK1, SSO, SS1, U, U4, U4/A, W, W/A
					1	-----	9000000 RH
	A		63210-Z40-S50	1	9000001	----- RH
	28	D	90851-ZT3-T40	RIVET, 3. 0X10. 3.	4	9000001	----- RH

NOTE A:PART NO. CHANGE D:NEWLY PROVIDED E:PART NO. DELETION K:REQUIRED NO. CORRECTION L:APPLICATION SERIAL NO. CORRECTION
M:PART DESCRIPTION CORRECTION T:APPLICATION CORRECTION Z:REMARKS CHANGE

HONDA PARTS CATALOGUE NEWS

PARTS CATALOGUE - CORRECTED

CODE NO.	13Z40E02
PARTS CATALOGUE NEWS	EU10iT1
NEWS NO.	010

Block No.	Ref. No.	Note	Part No.	Description	Reqd. QTY	Serial No.	Parts catalogue code
					EU 10i T1		
F-13	30	T	99204-ZE0-0350	JET SET, PILOT, #35.....	1	-----	G, HP1, LLO, RA, SB, SS0, U
		D	99204-ZE2-0350	1	-----	B, B/A, B2, B2/A, CL, CL/A, F, F/A, GW1, GW1/A, LB, LL1, LT, RG, RG/A, RH RR0, RR1, SK1, SS1, U4, U4/A, W, W/A

NOTE A:PART NO. CHANGE D:NEWLY PROVIDED E:PART NO. DELETION K:REQUIRED NO. CORRECTION L:APPLICATION SERIAL NO. CORRECTION
M:PART DESCRIPTION CORRECTION T:APPLICATION CORRECTION Z:REMARKS CHANGE

HONDA PARTS CATALOGUE NEWS

PARTS CATALOGUE - CORRECTED

CODE NO.	13Z40E02
PARTS CATALOGUE NEWS	EU10iT1
NEWS NO.	011

Block No.	Ref. No.	Note	Part No.	Description	Reqd. QTY EU 10i T1	Serial No.	Parts catalogue code
F-15	1		18310-ZT3-S11	MUFFLER COMP.....	1	-----	B, B2, CL, F, G, GW1, HP1, LLO, RA, RG, SB, SSO, U, U4, W
					1	----- 3048882	B/A, B2/A, CL/A, F/A, GW1/A, LB, LL1, LT, RG/A, RH, RRO, RR1, SK1, SS1 U4/A, W/A
		A	18310-Z40-T30	1	3048883 -----	B/A, B2/A, CL/A, F/A, GW1/A, LB, LL1, LT, RG/A, RH, RRO, RR1, SK1, SS1 U4/A, W/A

NOTE A:PART NO. CHANGE D:NEWLY PROVIDED E:PART NO. DELETION K:REQUIRED NO. CORRECTION L:APPLICATION SERIAL NO. CORRECTION
M:PART DESCRIPTION CORRECTION T:APPLICATION CORRECTION Z:REMARKS CHANGE

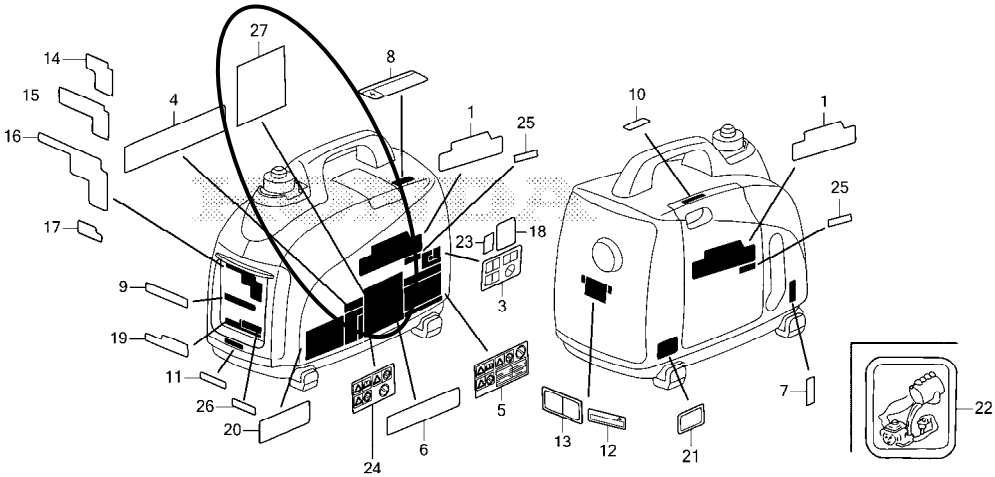
HONDA PARTS CATALOGUE NEWS

PARTS CATALOGUE - CORRECTED

CODE NO.	13Z40E02
PARTS CATALOGUE NEWS	EU10iT1
NEWS NO.	012

Block No.	Ref. No.	Note	Part No.	Description	Reqd. QTY	Serial No.	Parts catalogue code
					EU 10i T1		

F-31 LABEL



Z403F3100A

F-31	2	E	87114-ZT3-P90	*PART NO. DELETION			
	27	D	87114-ZT3-P91	LABEL, WARNING.....	1	-----	CL, CL/A

NOTE A:PART NO. CHANGE D:NEWLY PROVIDED E:PART NO. DELETION K:REQUIRED NO. CORRECTION L:APPLICATION SERIAL NO. CORRECTION
 M:PART DESCRIPTION CORRECTION T:APPLICATION CORRECTION Z:REMARKS CHANGE