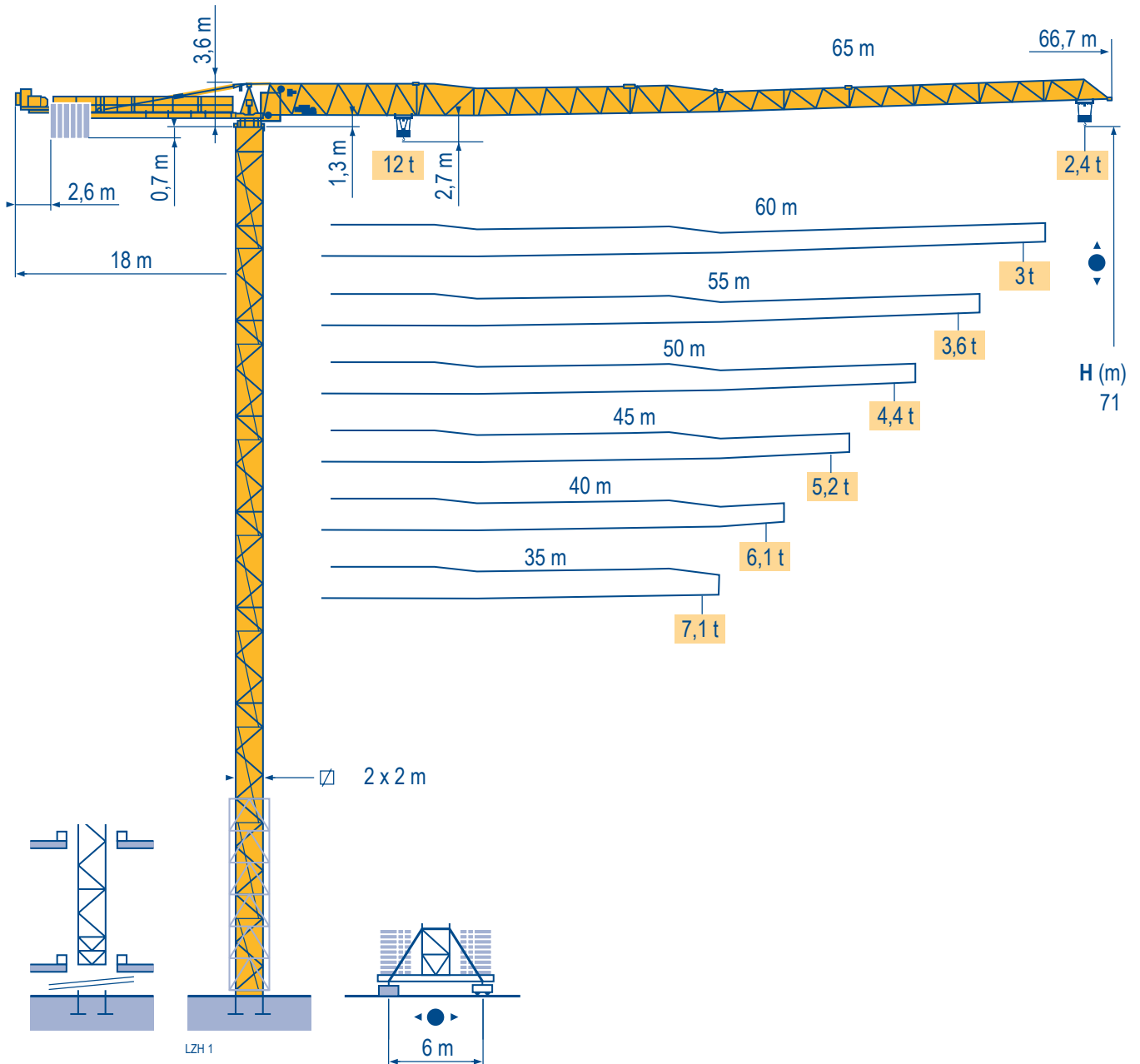
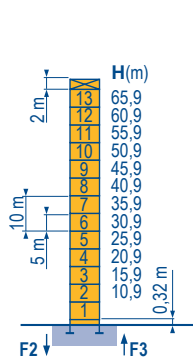


## MDT 222 J12

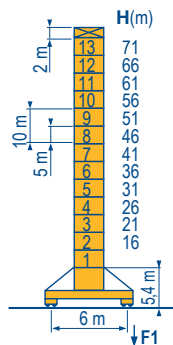


Mat / Réactions  2 m  
Maste / Eckdrücke  35 m → 65 m  
Masts / Reactions  
Mástil / Reacciones  
Torre / Reazioni  
Tramo / Reações

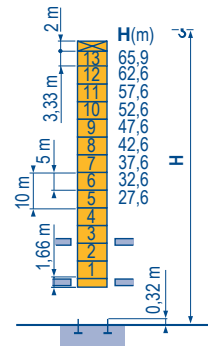
LZH 1



P 61 A	
F2	● 145 t
	■ 223 t
F3	● 91 t
	■ 174 t
	▲ 78 t



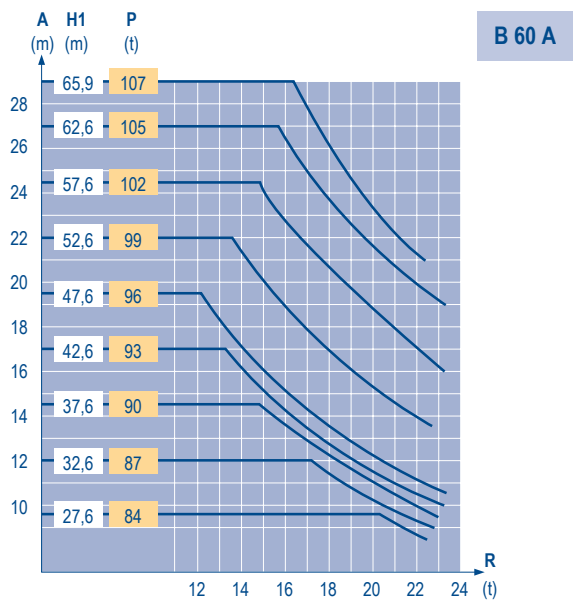
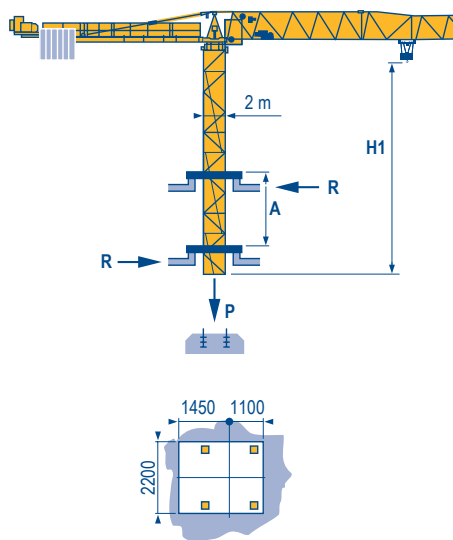
V 60 A	
F1	● 108 t
	■ 145 t
	▲ 90 t



B 60 A	
	● 108 t
	■ 145 t
	▲ 90 t



Télescopage sur dalles  
Kletterkrane im Gebäude  
Climbing crane  
Telescopage gruas trepadoras  
Gru in cavedio  
Telescopagem sobre lages

LZH 1



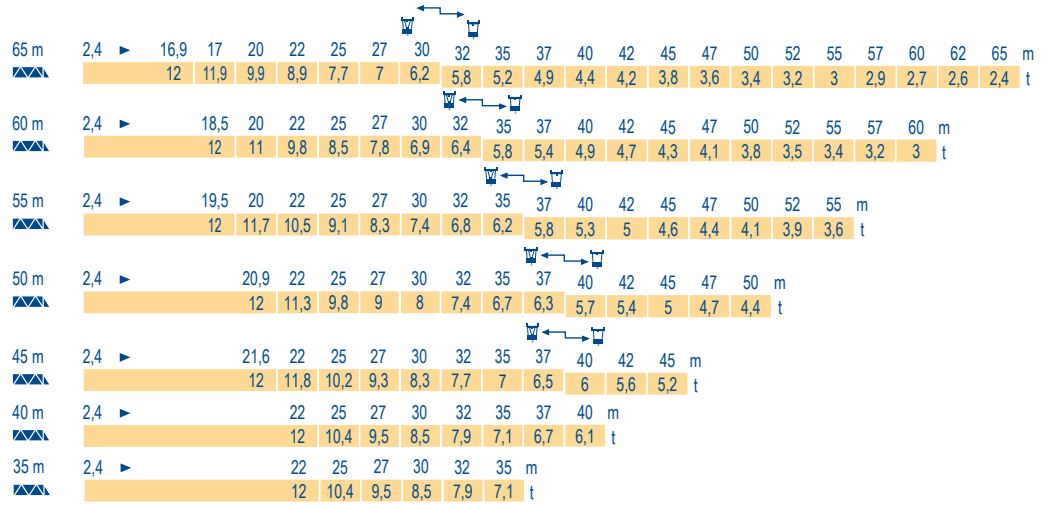
Topless  
MDT 222 J12

**POTAIN** 

F	D	GB	E	I	P
● Réactions en service	● Reaktionskräfte in Betrieb	● Reactions in service	● Reacciones en servicio	● Reazioni in servizio	● Reações em serviço
■ Réactions hors service	■ Reaktionskräfte außer Betrieb	■ Reactions out of service	■ Reacciones fuera de servicio	■ Reazioni fuori servizio	■ Reações fora de serviço
 A vide sans lest (ni train de transport) avec flèche et hauteur maximum.	Ohne Last, Ballast (und Transportachse), mit Maximalausleger und Maximalhöhe.	Without load, ballast (or transport axes), with maximum jib and maximum height.	Sin carga, sin lastre, (ni tren de transporte), flecha y altura máxima.	A vuoto, senza zavorra (ne assali di trasporto) con braccio massimo e altezza massima.	Sem carga (nem trem de transporte)- sem lastro com lança e altura máximas.
 Nous consulter	Auf Anfrage	Consult us	Consultarnos	Consultateci	Consultar-nos

**Courbes de charges**  
**Lastkurven**  
**Load diagrams**  
**Curvas de cargas**  
**Curve di carico**  
**Curva de cargas**

LZH 1



**Lest de contre-flèche**  
**Gegenauslegerballast**  
**Counter-jib ballast**  
**Lastre de contra flecha**  
**Contrappeso**  
**Lastros da contra lança**

LZH 1

		3 150 kg - 2 100 kg	
		50 LVF 30	75 LVF 30
Height (m)	Counter-jib length (m)	(kg)	(kg)
65 m	18 m	19 950	18 900
60 m	18 m	18 900	17 850
55 m	18 m	18 900	17 850
50 m	18 m	17 850	16 800
45 m	18 m	16 800	15 750
40 m	18 m	14 700	13 650
35 m	18 m	12 600	11 550

**Lest de base - Grundballast**  
**Base ballast - Lastre de base**  
**Zavorra di base - Lastros da base**

LZH 1

2 m	V 60 A	H (m)	71	66	61	56	51	46	41	36	31	26	21	16
		(t)	120	96	72	48	48	48	48	48	48	48	48	48

**Topless**  
**MDT 222 J12**



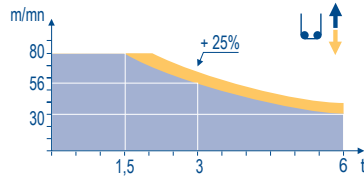
	F	D	GB	E	I	P
<b>A</b>	Distance entre cadres	Abstand zwischen den Rahmen	Distance between collars	Distancia entra marcos	Distanza fra i telai	Distância entre quadros
<b>H1</b>	Hauteur grue	Kranhöhe	Crane height	Altura grúa	Altezza grua	Altura da grua
<b>P</b>	Poids de la grue(en service)	Krangewicht (in Betrieb)	Crane weight (in service)	Peso de la grúa (en servicio)	Peso della gru (in servizio)	Peso da grua (em serviço)
<b>R</b>	Réaction horizontale	Horizontalkräfte	Horizontal reaction	Reaccion horizontal	Reazione orizzontale	Reacção horizontal
	Voir télescopage sur dalles	Siehe Kletterkrane im Gebäude	See climbing crane	Veja grua trepadora	Consultare gru in cavedio	Ver telescopagem sobre lages

Mécanismes  
Antriebe  
Mechanisms  
Mecanismos  
Meccanismi  
Mecanismos

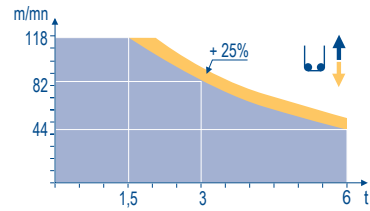
LZH2

														ch - PS hp	kW		
	50 LVF 30 Optima	m/min	2,4 → 10 → 30 → 38 → 56 → 80						1,2 → 5 → 15 → 19 → 28 → 40						50	37	454 m
	t	6 6 6 4,5 3 1,5						12 12 12 9 6 3									
	75 LVF 30 Optima	m/min	3,8 → 15 → 44 → 58 → 82 → 118						1,9 → 7,5 → 22 → 29 → 41 → 59						75	55	612 m
	t	6 6 6 4,5 3 1,5						12 12 12 9 6 3									
	6 DVF 4	m/min	0 → 50 (12 t) - 0 → 100 (6 t) - 0 → 120 (3 t)												5,5	4	
	RVF 162 Optima +	tr/min U/min rpm	0 → 0,7												2 x 7,5	2 x 5,5	
	V 60 A RT 544 A1 2V R ≥ 13 m	m/min	13,5 - 27												4 x 7	4 x 5,2	
		400V (+6%-10%) 50 Hz												50 LVF : 75 kVA 75 LVF : 100 kVA			

50 LVF 30  
Optima



75 LVF 30  
Optima



F

Levage  
Distribution  
Orientation  
Translation

D

Heben  
Katzfahren  
Schwenken  
Kranfahren

GB

Hoisting  
Trolleying  
Slewing  
Travelling

E

Elevación  
Distribución  
Orientación  
Traslación

I

Solleveramento  
Distribuzione  
Rotazione  
Traslazione

P

Elevação  
Distribuição  
Rotação  
Translação



Document commercial non contractuel. Pour toute information technique se référer à la notice correspondante.

Unverbindliches Vertriebsdokument. Für technische Informationen, siehe die entsprechenden Anweisungen.

This commercial document is not legally binding. For any technical information, please refer to the corresponding instructions.

Documento comercial non contractuel. Para cualquier información técnica, ver la noticia correspondiente.

Documento commerciale non vincolante, per tutte le informazioni tecniche fare riferimento al catalogo istruzioni.

Documento comercial não contratual. Para qualquer informação técnica complementar consultar as respectivas instruções.

**Manitowoc**  
Crane CARE

**POTAIN**  
Manitowoc Crane Group



Americas

Tel : +1 888 479 7278  
Tel : +1 717 593 2000

Europe - Middle East - Africa

Tel : +33 (0) 4 72 81 50 00  
Tel : +44 (0) 191 522 2000

Asia - Pacific

Tel : +65 6264 1188  
Fax : +65 6862 4040

www.manitowoccrane.com

18, rue de Charbonnières - B.R.173  
69132 ECULLY Cedex - France

Tél. : +33 (0) 4 72 18 20 20

Fax. : +33 (0) 4 72 18 20 00

www.manitowoccrane.com

**Topless MDT 222 J12**

Code S-91985-67\_Réf. 2003 48 LZH 3

Copyright.Reproduction interdite © POTAIN 2003

Réalisation Secotec