

ROTHENBERGER NEWS



ROSCOPE® i2000

Modular system for professional use

- ✓ Pipe inspection
- ✓ Inspection of hollow spaces
- ✓ Pin-point locating
- ✓ Leak detection
- ✓ Analysis



ROSCOPE® i2000 Module TEC

The multifunctional technology combines inspection techniques, locating technology and leak detection in one unit. The high-performance camera for inspection of hollow spaces and hard to reach areas

The ROSCOPE® i2000 covers almost all inspection techniques within living and working spaces. Camera-, locating- and heat image modules allow a multifunctional use. The WiFi technology allows a quick and easy data transfer.

- WiFi for easy data transfer and subsequent processing with the ROSCOPE® i2000 App
- User-friendly touchscreen monitor and simple menu guidance
- Recording of pictures and videos
- Audio recording and playback possible without further equipment
- USB charging function



Technical Data ROSCOPE® i2000 Module TEC:

Display:	3.5" Touchscreen (color)
Display size:	71 x 54 mm
Picture format:	640 x 480 Pixel
Video-/ picture format:	AVI /JPEG
Connection:	Mini-USB, AV-Out, SD-card slot
Power supply:	Li-Ionen Akku 3.7 V / 5.2 Ah
Memory:	SD-Card (4 GB)
Camera head:	Ø 17 mm, self-levelling, waterproof to IP 68
Brightness:	100 LUX (0.5 m), with 4 LED lights
Cable length:	0.9 m
Weight module:	0.3 kg
Weight basic unit:	0.6 kg

Compatible connection for previous modules

ROTHENBERGER previous model ROSCOPE® 1000 can be used

Versatile and user-friendly!

Self-levelling picture

Picture is always upright, no loss of orientation



ROSCOPE® i2000 App Available for free!

Powerful Li-ion battery

For an extra-long battery life and short charging times



Fig. ROSCOPE® i2000 Module TEC

Scope of delivery ROSCOPE® i2000 Module TEC (No. 1500000696):
ROSCOPE® i2000 basic unit, Module TEC, charger, plastic carrying case

Model	No.
ROSCOPE® i2000 Module TEC	1500000696

ROSCOPE® i2000 App

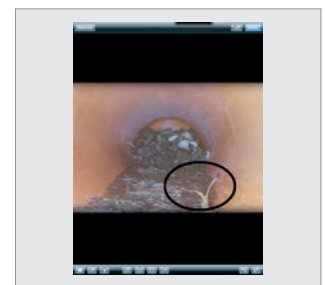
App for smartphone and tablet to edit and send recorded image data

- Image transfer live from ROSCOPE® i2000 to a mobile device via ROSCOPE® i2000 App
- Integrated editing function to mark and name specific pipeline damages
- Synchronizing of stored images to allow further processing
- Sending edited pictures directly from the place of action

Transfer to mobile devices



Editing with ROSCOPE® i2000 App



ROSCOPE® i2000 Module ROSCAN 150

Infrared camera for analysis of warm and cold sources.
Available as a whole unit and together with a heat module concept for ROSCOPE® i2000 Module TEC

- Ideal for leak detection respective for visualization and analysis of refrigeration and heat sources
- Overlay technology: overlay of visual image and thermal image for accurate analysis and clear understanding
- Very high accuracy of measurement in the range of -20 °C to 220 °C
- Also usable for previous model ROSCOPE® 1000 basic unit



Technical Data Module ROSCAN 150:

IR pixel:	32 x 31
Temperature range of the object:	-20 °C bis 220 °C
Frequency:	9 Hz
Working range:	1.5 - 2.5 m
Weight module:	0.25 kg

Temperature indicator

Selectable between Celsius and Fahrenheit



Selection of Overlay Technique

Selectable in 25% steps
(0%, 25%, 50%, 75%, 100%)



Selection of color mode

4 Set-up options: iron bow, black and white, lead, rainbow



Quick Picks

Emissivity setting of different materials
Exact temperature differentiation of analyzed material



Display of maximum temperature



Fine adjustment of temperature range
Exact temperature differentiation of thermal image



Display of minimum temperature

2014-01-05 18:42

Display of date on recorded pictures



Fig. ROSCOPE® i2000 Module ROSCAN 150

Module ROSCAN 150 also usable for the previous model ROSCOPE® 1000



Hydraulic balance – Visualization of heating efficiency



Scope of delivery ROSCOPE® i2000 Module ROSCAN 150 (No. 1000000995):
ROSCOPE® i2000 basic unit, Module TEC, Module ROSCAN 150, charger, plastic carrying case

Model	No.
ROSCOPE® i2000 Module ROSCAN 150	1000000995
Modul ROSCAN 150 (w/o ROSCOPE® i2000 Module TEC)	1500000932

ROSCOPE® i2000 Module 25/16

High-performance camera for the inspection of pipes from Ø 50 up to 100 mm. Available as a complete unit or as an inspection module for the ROSCOPE i2000 Module TEC

- Ideal for supply and disposal lines (Ø 50-100 mm)
- Extremely flexible camera head for 90° bends starting from Ø 50 mm
- Can be used with guide skid up to Ø 100 mm
- Self-leveling picture
- 5-times zoom function



Technical Data Module 25/16:

Camera head:	Ø 25 mm, waterproof, self-leveling
Brightness:	125 LUX (0.5 m), with 4 LED lights
Cable length:	16 m
Cable diameter:	8.5 mm
Frequency:	512 Hz
Weight module:	3.7 kg

Simple locating of the camera head with integrated transmitter!



WiFi-transmitter

Easy data transfer to mobile devices



Integrated transmitter

For precise locating of the camera head

Self-leveling picture

Picture is always upright, no loss of orientation

Battery compartment

For the power supply of the integrated transmitter (2 AA batteries included in delivery)

Rubberized base

Stable stand without slipping and damaging the surface

Guide skid for Module 25/16 and 25/22

For centering of camera head and better illumination of the pipe



No. 74629

Fig. ROSCOPE® i2000 Module 25/16

Inspection of access line



Inspection of rain drainpipes



Scope of delivery ROSCOPE® i2000 Module 25/16 (No. 1000000842):
ROSCOPE® i2000 basic unit, Module 25/16, Module TEC, charger, plastic carrying case

Model		No.
ROSCOPE® i2000 Module 25/16	1	1000000842
Modul 25/16 (w/o ROSCOPE® i2000 Module TEC)	1	1500000052
Modul 25/22 (w/o ROSCOPE® i2000 Module TEC)	1	1000000860
Guide skid for Module 25/16 and 25/22	1	74629

ROSCOPE® i2000 Module ROLOC PLUS

Easy to use pipe and sonde locating device.
Available as a complete unit, as well as locating module for ROSCOPE® i2000 Module TEC

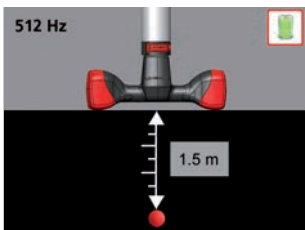
- Pin-point location of ROTHENBERGER camera heads (Module 25/16, ROCAM® 3 Multimedia) and sondes of other manufacturers
- Precise depth measurement
- Different frequencies can be chosen
- Simple and clear menu design guides step-by-step through the locating process
- Telescopic function makes transporting in case easier



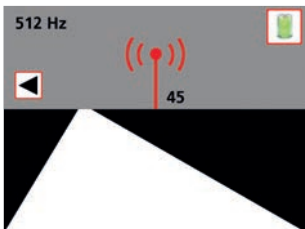
Technical Data Module ROLOC PLUS

Frequencies:	512 and 640 Hz, 33 kHz active/passive
Dimensions:	95 x 32 x 30 cm (operating mode) 67 x 32 x 9 cm (transportation mode)
Weight module:	1.3 kg

Depth measurement with a push of the button



Target is right of the running direction. Correction of your direction to the right is necessary.



Simple menu guidance

Guides step-by-step to targeted position

Multi-frequencies

Locating of the most common camera heads

Telescopic function

For easier transport in case

Depth measurement

Pin-point location of the transmitter position



Fig. ROSCOPE® i2000 Module ROLOC PLUS



Scope of delivery ROSCOPE® i2000 Module ROLOC PLUS (No. 1000000861):
ROSCOPE® i2000 basic unit, Module ROLOC PLUS, Module TEC, charger, plastic carrying case

Model	No.
ROSCOPE® i2000 Module ROLOC PLUS	1000000861
Module ROLOC PLUS (w/o ROSCOPE® i2000 Module TEC)	1500000057

ROSCOPE® i2000 3-in-1 or 4-in-1 set

Modular concept for visual inspection of hollow spaces and pipes with locating module for sondes and camera heads, together with infrared module for analysis of refrigeration and heat sources.

Hollow spaces inspection with ROSCOPE® i2000 Module TEC:

- Self-leveling camera head
- Waterproof camera head as per IP 68

Inspection of pipes with Module 25/16:

- Recording and playback of inspection on video (AVI) or photo (JPEG)
- Extremely flexible camera head for 90° bends starting from Ø 50 mm

Locating with Module ROLOC Plus:

- Accurate locating of ROTHENBERGER camera heads (module 25/16, ROCAM® 3 Multimedia) and sondes of other manufacturers
- Accurate depth measurement function

Analyzing with Module ROSCAN 150:

- For leak detection respective for visualization and analysis of refrigeration and heat sources



Fig. ROSCOPE® i2000 Module TEC



Fig. Module 25/16

- ✓ Pipe inspection
- ✓ Hollow spaces inspection
- ✓ Pin-point location
- ✓ Leak detection
- ✓ Analysis



Fig. Module ROSCAN 150

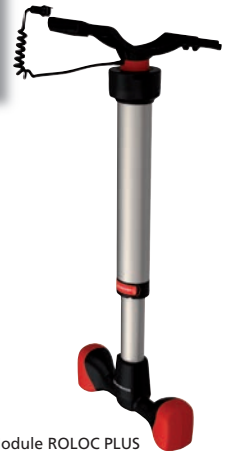


Fig. Module ROLOC PLUS

3-in-1 set (No. 100000862) includes: ROSCOPE® i2000 basic unit, Module TEC (No. 1500000696), Module 25/16 (No. 1500000052), Module ROLOC PLUS (No. 1500000057)

4-in-1 set (No. 100001111) includes: ROSCOPE® i2000 basic unit, Module TEC (No. 1500000696), Module 25/16 (No. 1500000052), Module ROLOC PLUS No. 1500000057, Module ROSCAN 150 (No. 1500000932)

Model	No.
ROSCOPE® i2000 3-in-1 Set	100000862
ROSCOPE® i2000 4-in-1 Set	100001111

Dealer certificate through:
ROTHENBERGER Werkzeuge GmbH

Specialised retailer:

ROTHENBERGER Werkzeuge GmbH
Industriestrasse 7
D-65779 Kelkheim / Germany
Telefon + 49 (0) 6195 / 800 -0
Telefax + 49 (0) 6195 / 800 -3500
info@rothenberger.com