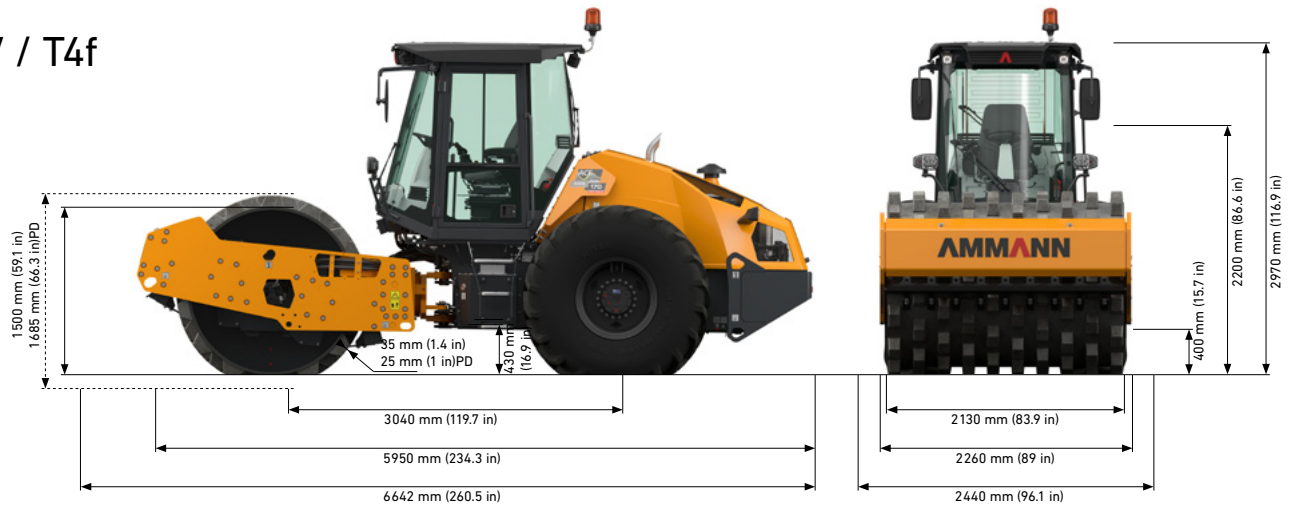


ARS 170

StV / T4f



WEIGHT & OPERATING CHARACTERISTICS

		PD	HX	HXPD
OPERATING WEIGHT	16 440 kg (36 244 lb)	16 655 kg (36 718 lb)	16 460 kg (36 288 lb)	16 675 kg (36 762 lb)
OPERATING WEIGHT MAX.	18 890 kg (41 645 lb)	17 590 kg (38 779 lb)	18 910 kg (41 689 lb)	17 610 kg (38 823 lb)
STATIC LINEAR LOAD	49.6 kg/cm (277.7 lb/in)	-	49.7 kg/cm (278.3 lb/in)	-
NUMBER OF PADS	-	140 pcs	-	140 pcs
PAD CONTACT SURFACE	-	120 cm ² (18.6 sq in)	-	120 cm ² (18.6 sq in)
PAD HEIGHT	-	100 mm (3.9 in)	-	100 mm (3.9 in)
MAX. WORKING SPEED	6.3 km/h (3.9 MPH)	6.3 km/h (3.9 MPH)	4.8 km/h (3.0 MPH)	4.8 km/h (3.0 MPH)
MAX. TRANSPORT SPEED	10 km/h (6.2 MPH)	10 km/h (6.2 MPH)	10 km/h (6.2 MPH)	10 km/h (6.2 MPH)
GRADEABILITY WITHOUT VIBRATION	48%	44%	65%	58%
GRADEABILITY WITH VIBRATION	40%	40%	55%	55%
TURNING RADIUS (INNER)	3 570 mm (140.6 in)	3 570 mm (140.6 in)	3 570 mm (140.6 in)	3 570 mm (140.6 in)

COMPACTION FORCES

	PD	
FREQUENCY I	25–28 Hz (1500–1680 vpm)	25–28 Hz (1500–1680 vpm)
FREQUENCY II	25–35 Hz (1500–2100 vpm)	25–35 Hz (1500–2100 vpm)
CENTRIFUGAL FORCE I	265–333 kN (59574–74861 lbf)	265–333 kN (59574–74861 lbf)
CENTRIFUGAL FORCE II	113–222 kN (25403–49908 lbf)	113–222 kN (25403–49908 lbf)
AMPLITUDE I	2.28 mm (0.090 in)	2.06 mm (0.081 in)
AMPLITUDE II	1.03 mm (0.041 in)	0.95 mm (0.037 in)

MAXIMUM RECOMMENDED COMPACTED LIFT THICKNESS AT OPTIMAL WORKING CONDITIONS

	PD	
ROCKFILL	* 1 400 mm (55 in)	-
SAND / GRAVEL	* 900 mm (35 in)	-
MIXED SOILS	* 800 mm (31 in)	* 800 mm (31 in)
SILT	600 mm (24 in)	* 600 mm (24 in)
CLAY	320 mm (13 in)	* 370 mm (15 in)

* Recommended drum type

MISCELLANEOUS

BRAKES OPERATING	Hydrostatic
BRAKES PARKING	Multiple-disc spring brake
BRAKES EMERGENCY	Multiple-disc spring brake
FUEL TANK CAPACITY	345 l (91.1 gal)
HYDRAULIC TANK CAPACITY	76 l (20.1 gal)
STEERING ANGLE	±36°
OSCILLATION ANGLE	±10°
BATTERY VOLTAGE	24V
BATTERY CAPACITY	2x90 Ah

ENGINE

MANUFACTURER	Perkins
ENGINE TYPE	904J
POWER ACCORDING TO ISO 14396	106 kW (142 HP)
ENGINE SPEED	2200 rpm
EXHAUST GAS AFTER-TREATMENT	EGR+DOC+DPF+SCR
EMISSION STAGE	EU Stage V / U.S. EPA Tier 4 Final

ARS 170 StV

For additional product information and services please visit: www.ammann.com

Materials and specification data are subject to change without notice.

MSS-3277-01-EN-US | © Ammann Group

AMMANN