



Bodentré 1000

Stair Podest 1000

Temporary access solutions for construction sites according to EN 12811

Standard: EN 12811

Dimensions: Metric

SAFE
AT SITE



Table of Content

Introduction	3
Stair Podest 1000 1-step	4
Stair Podest 1000 2-step	5
Stair Podest 1000 3-step	6
Stair Podest 1000 90°	7
Description of Stair Podest 1000 Components	8
Needed Bolts and Nuts	10
Stair Podest 1000 Assembly	11
Conversion of 1-step into 2-step Stair Podest	17
Conversion of 1-step into 3-step Stair Podest	22
Conversion of 1-step into 1-step Stair Podest 90°	28
General Safety	36



Introduction

The modular Stair Podest 1000 was designed to guarantee safe and simple access to portacabins, site trailers and construction cabins.

To guarantee maximum flexibility for the end user, the standard one-step Stair Podest can be transformed into a two- or three-step one by only adding a few side beams and steps to the existing Stair Podest.

The mounting process as well as the conversion into two- and three Step Podests is simple by only using a few bolts and nuts.

If needed, a regular Stair Podest 1000 can be turned 90° and installed accordingly to the cabin by rearranging one handrail and the podest fixation.

Alignment of the Stair Podest 1000 is possible via two DW15 rods at the bottom step.

Complying with EN 12811 and manufactured in Germany according to EN 1090, this product combines quality with safety.





Stair Podest 1000 1-step

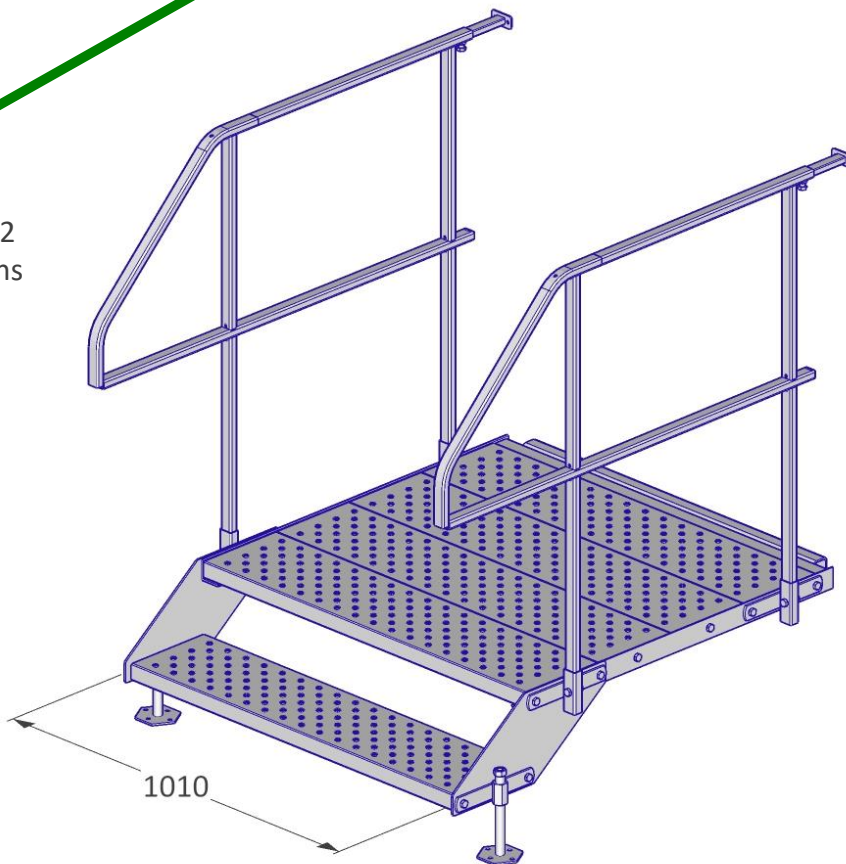
EN 12811
1,5 kN/m²

1 Platform + 2
Handrails
Item No.: 20013
62 kg

Possible height:
230-360 mm



Max. 2
persons



8 pcs / Euro Pallet



1200 x 800 x 1500 mm



516 kg

**SAFE
AT SITE**



Stair Podest 1000 2-step

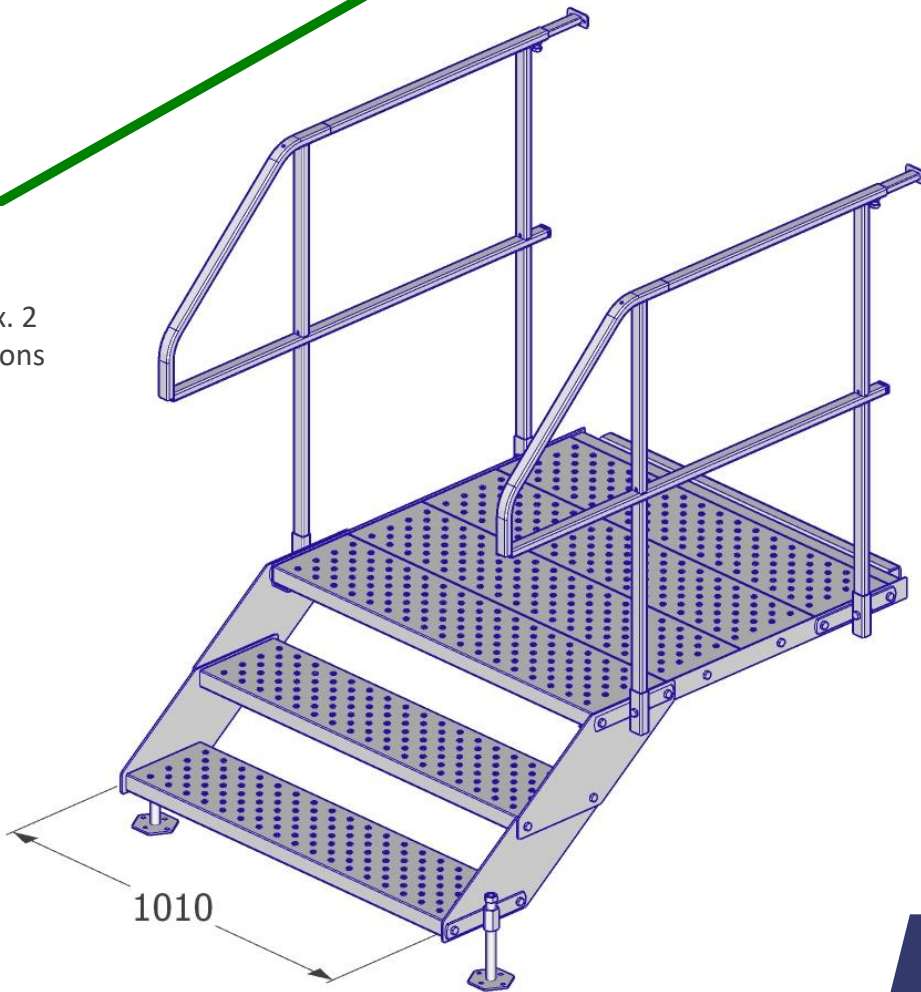
EN 12811
1,5 kN/m²

1 Platform + 2
Handrails
73 kg

Possible height:
405-535 mm



Max. 2
persons



8 pcs / Euro Pallet



1200 x 800 x 1500 mm



604 kg

**SAFE
AT SITE**



Stair Podest 1000 3-step

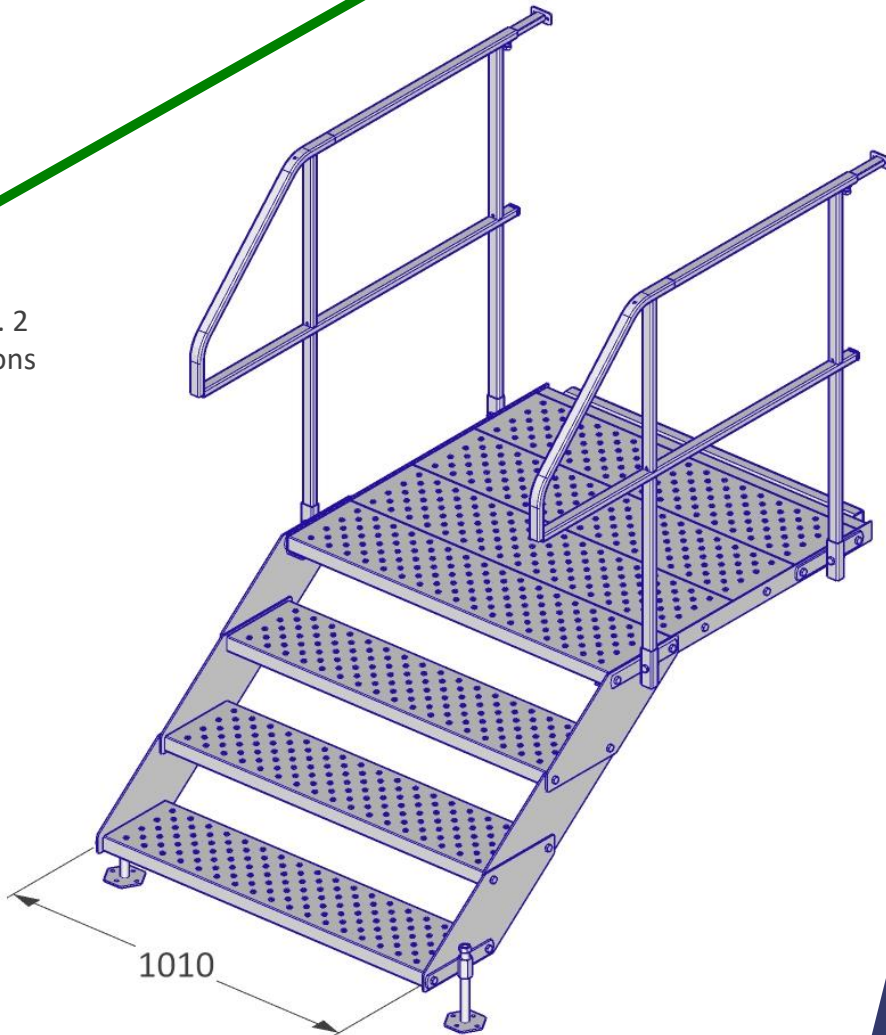
EN 12811
1,5 kN/m²

1 Platform + 2
Handrails
83 kg

Possible height:
580-710 mm



Max. 2
persons



8 pcs / Euro Pallet



1200 x 800 x 1500 mm



684 kg

**SAFE
AT SITE**



Stair Podest 1000 1-step 90°

EN 12811
1,5 kN/m²

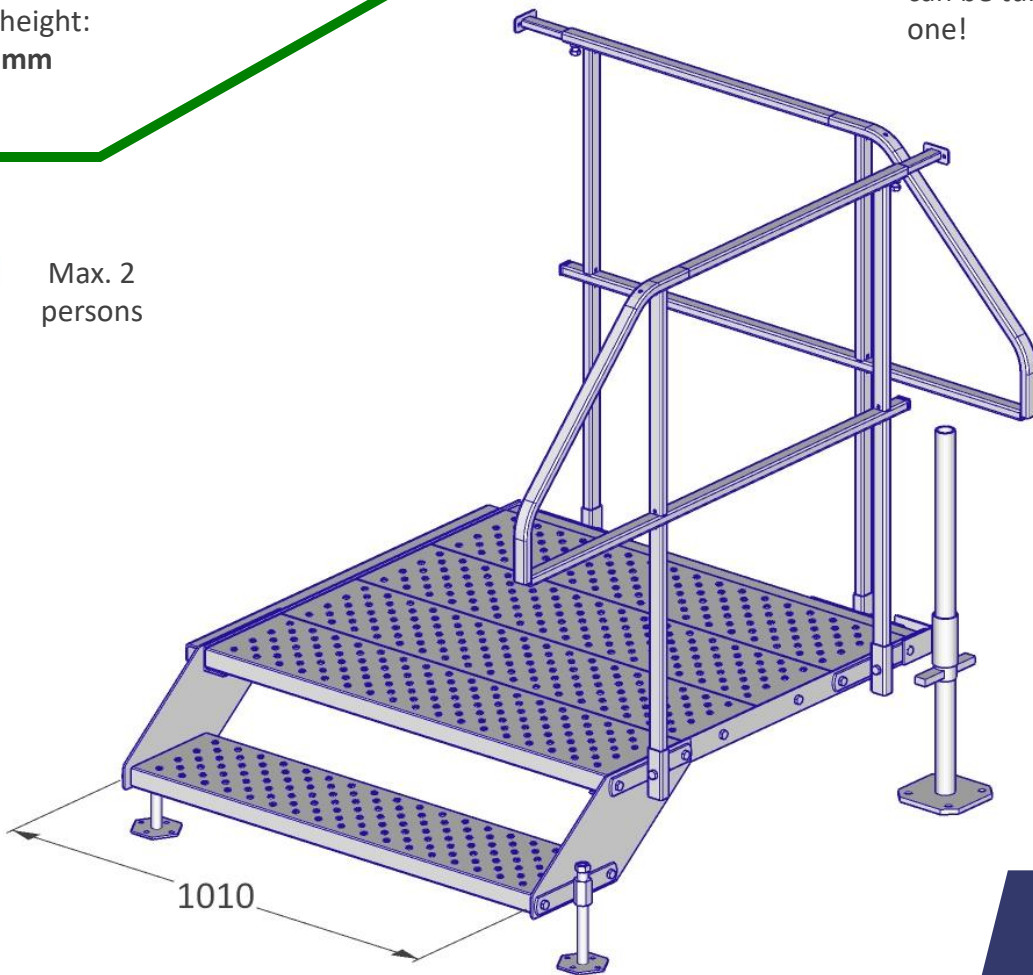
1 Platform + 2
Handrails
Item No.: 2400001
67 kg

Possible height:
230-360 mm

With few steps, every 1-,
2-, 3-step Stair Podest
can be turned into a 90°
one!



Max. 2
persons



1010

Max.
1,5
kN/m²



8 pcs / Euro Pallet



1200 x 800 x 1500 mm

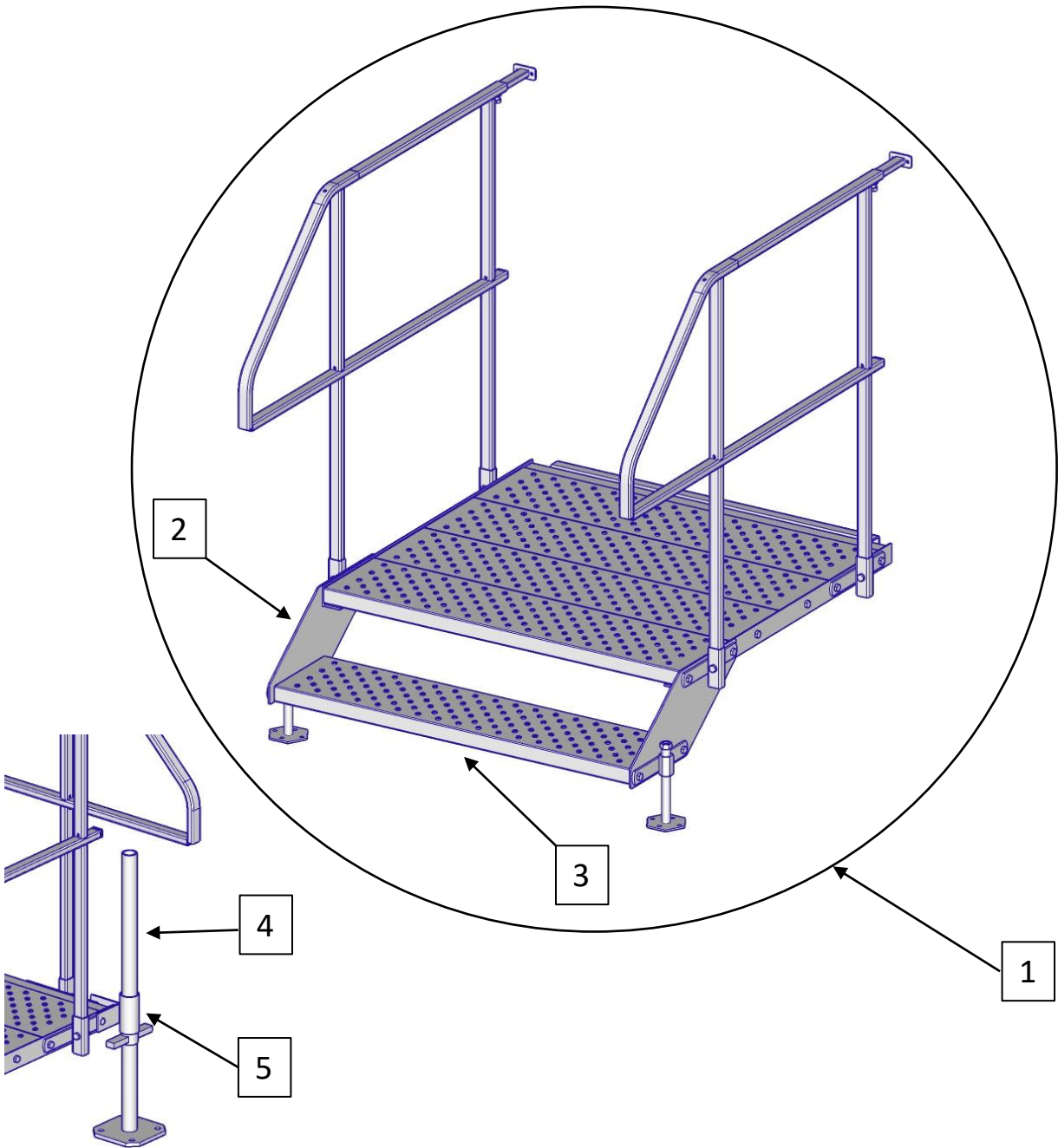


726 kg

**SAFE
AT SITE**



Description of Stair Podest 1000 Components





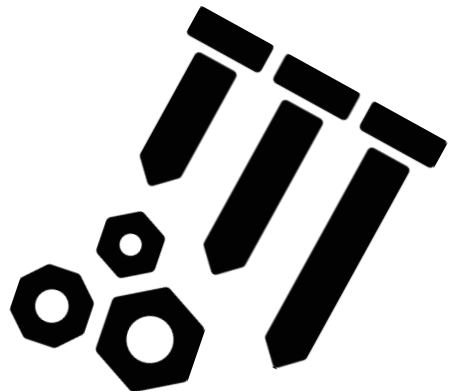
Description of Stair Podest 1000 Components

	Item No.	Description
1.	20013	Podest 1000 – Bodentré 1 steg inkl dubbla räcken och fotjusteringar
2.	20039	Side Beam for Podest 1000 – Bodentré Trappa Sidostycke 2 st inkl skruv & mutter
3.	20017	Step 225x1000 – Standard Steg 1000
4.	20041	Base Jack – Bodentré Hörnstöd inkl mutter
5.	20040	Base Jack Attachment - Bodentré Hörnstödsinfästning



In case of loss:
Needed Bolts and Nuts

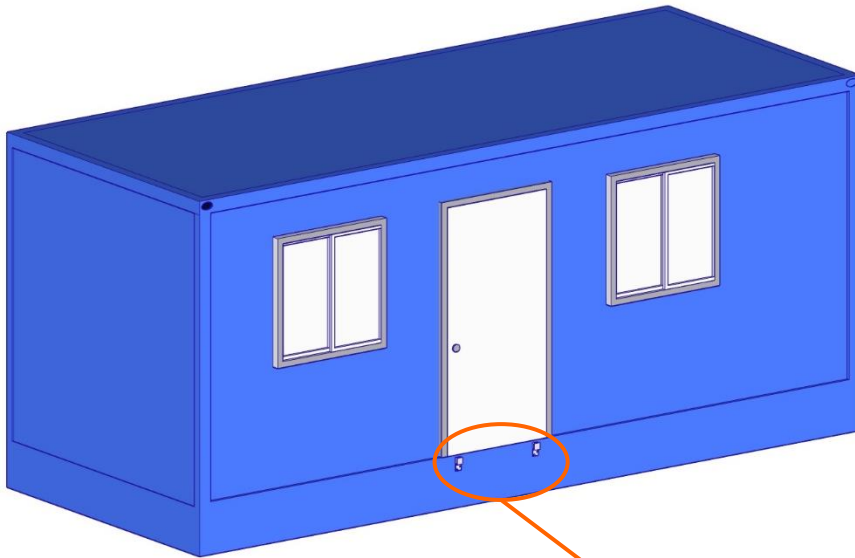
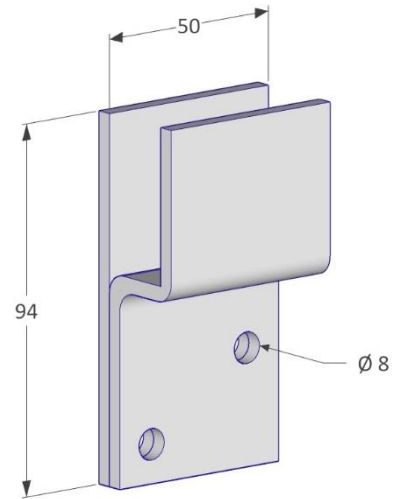
1. Bolt M10 x 20 mm 8.8 DIN 933
2. Bolt M10 x 35 mm 8.8 DIN 933
3. Bolt M10 x 60 mm 8.8 DIN 933
4. Nut M10 self-locking 8 DIN 985





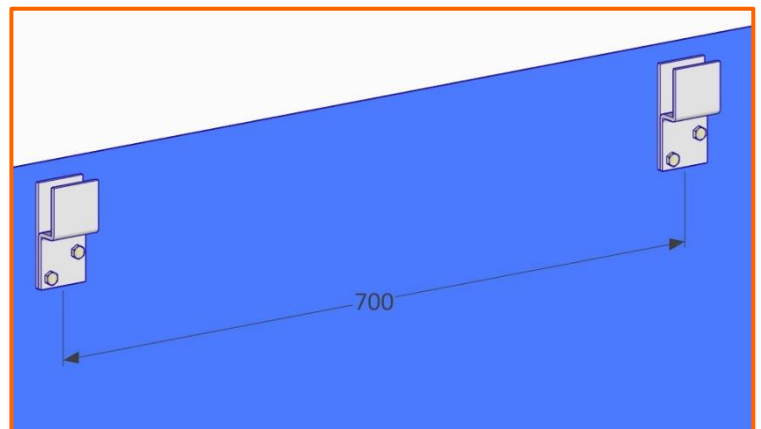
Stair Podest 1000 Assembly

- 1 Mount the attachments to the portacabin



- If the portacabin has already existing attachments mounted beneath the door, this assembly step can be dropped

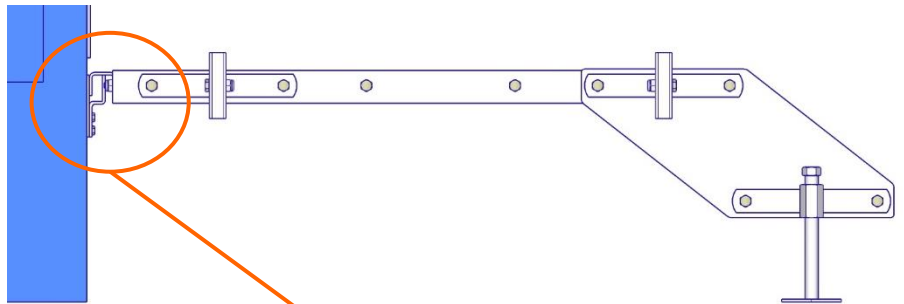
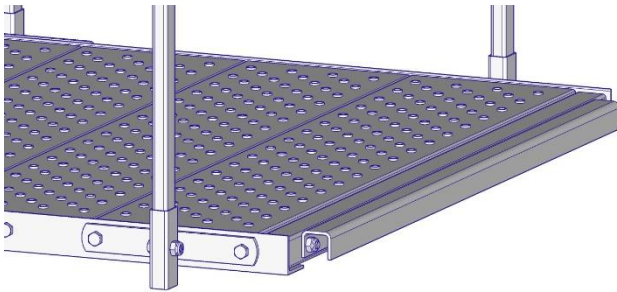
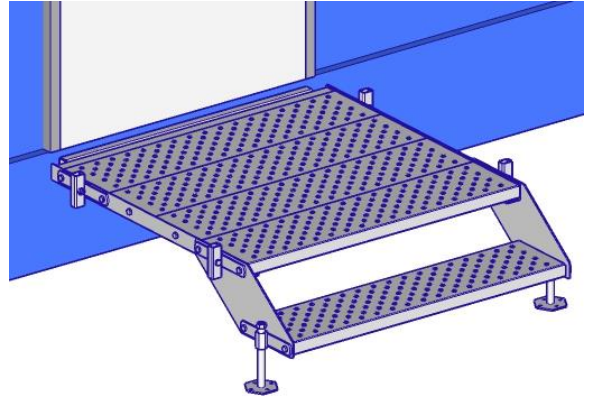
- Distance between the two attachments is 700 mm
- Vertical distance between bottom end of the door and upper end of the attachment should be 15 mm
- Use both screw holes
- Use screws that suit the given portacabin (wood screws for wood, tapping screws for sheet metal etc.)



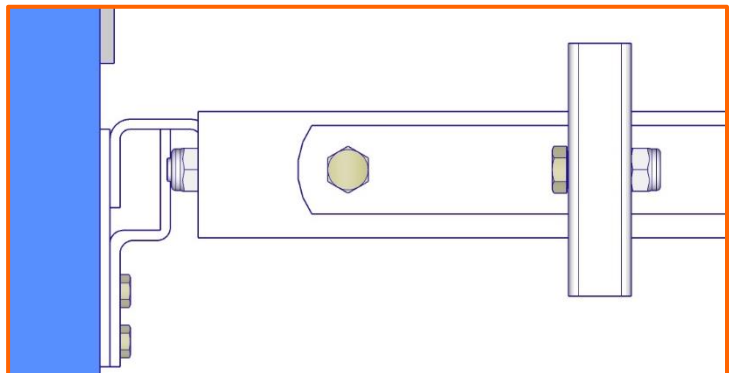


Stair Podest 1000 Assembly

- 2 Insert the podest fixation (the U-Profile) into the attachments



- Bolts and nuts which were used to fix the podest fixation (the U-profile) to the podest, prohibit the whole platform from slipping out of the attachments

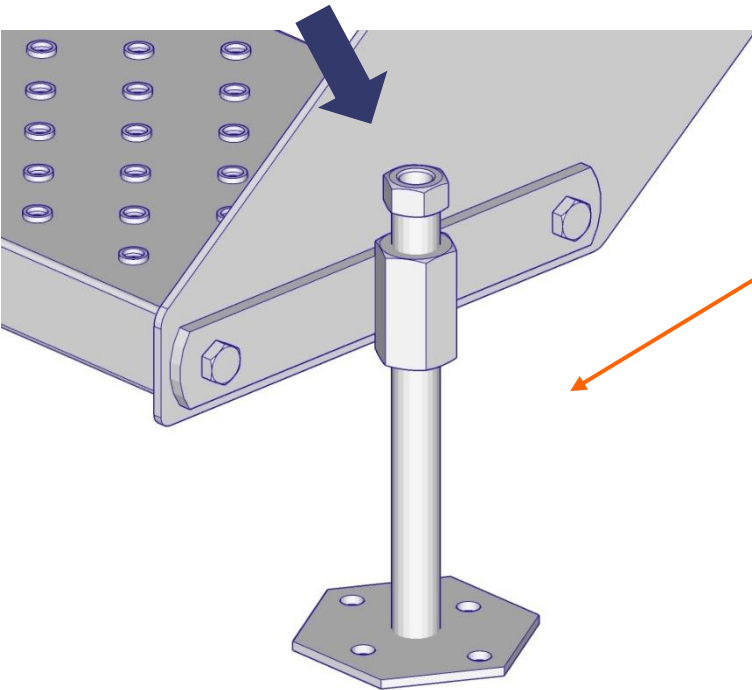
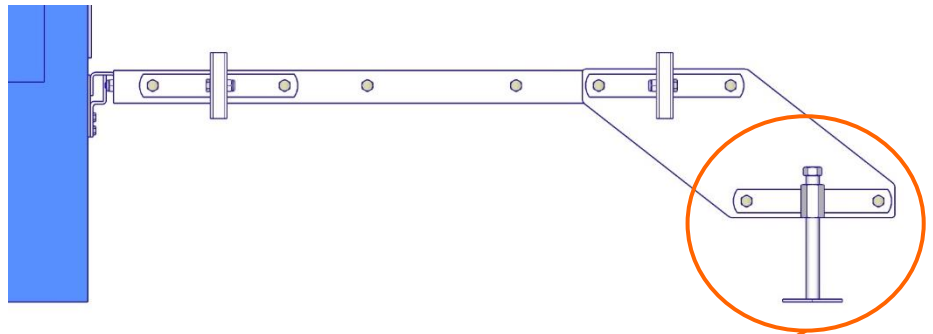




Stair Podest 1000 Assembly

- 3 Align the Stair Podest using the feet with the DW15 rods

Bolt M16 10 DIN 934

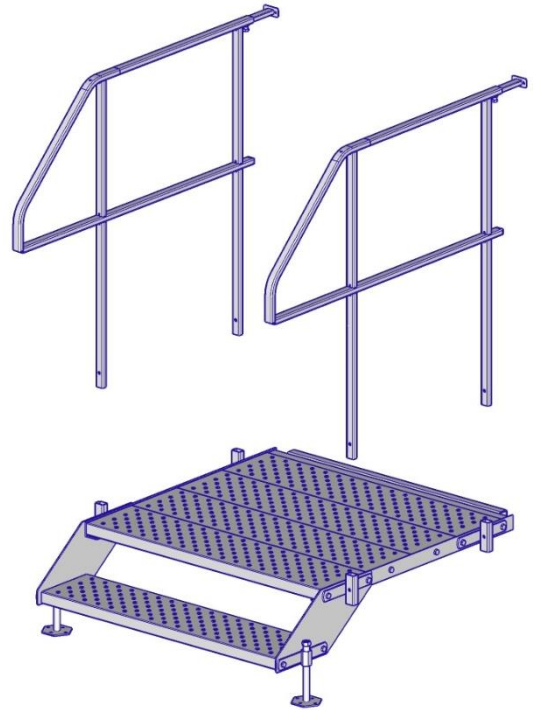
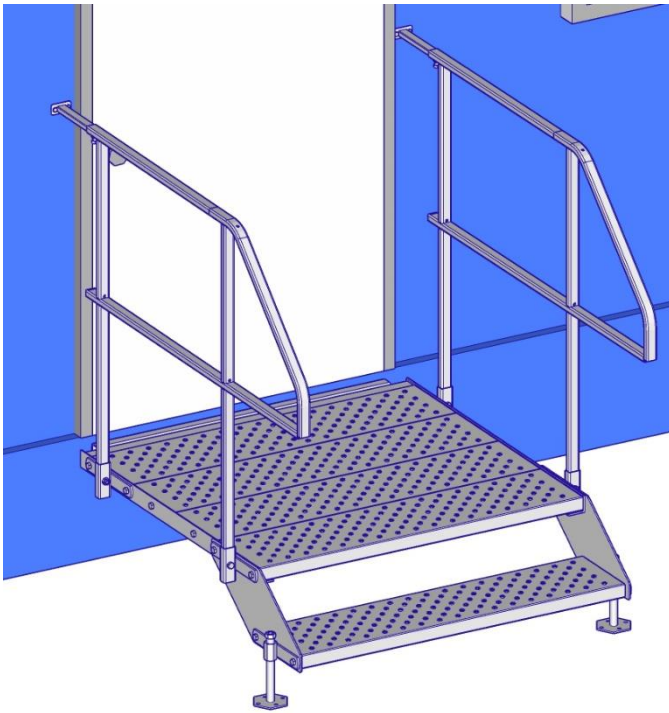


- Use a 24 mm wrench to rotate the DW15 rod and by that align the whole stair podest until it is evenly adjusted
- If desired, the feet can be additionally fixed to the ground using the holes within the base plate
- Use a spirit level to double check

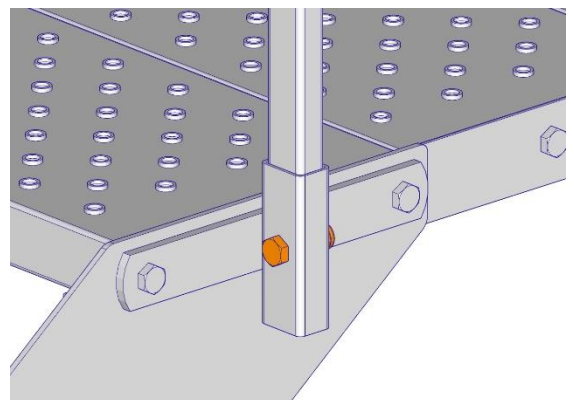
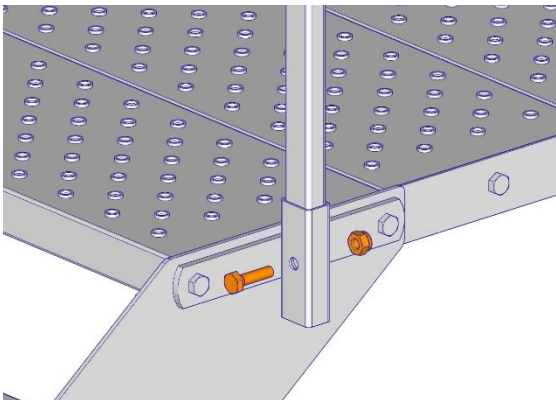


Stair Podest 1000 Assembly

- 4 Insert the handrails into the handrail holders by using bolts and nuts



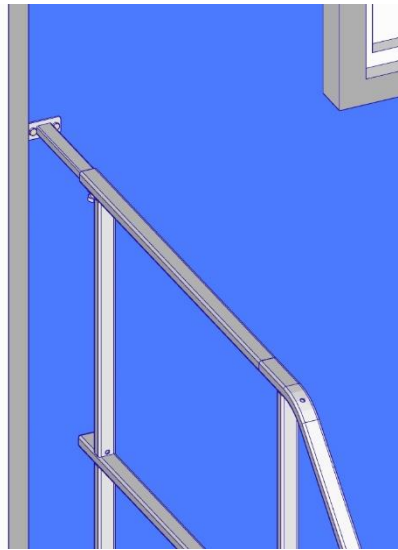
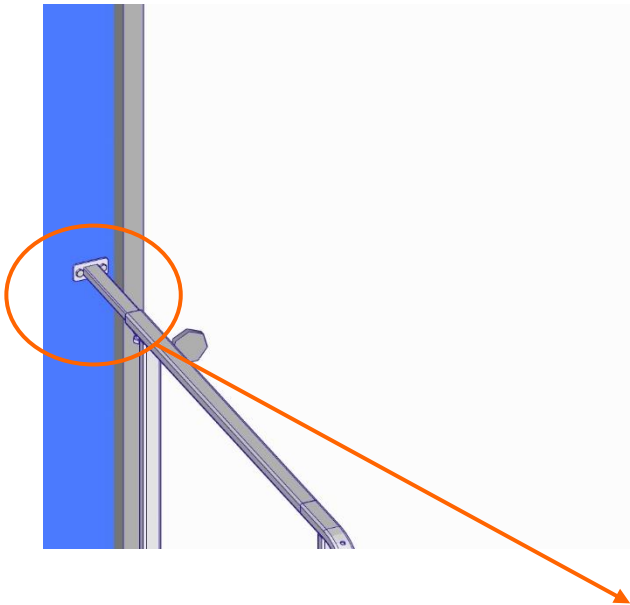
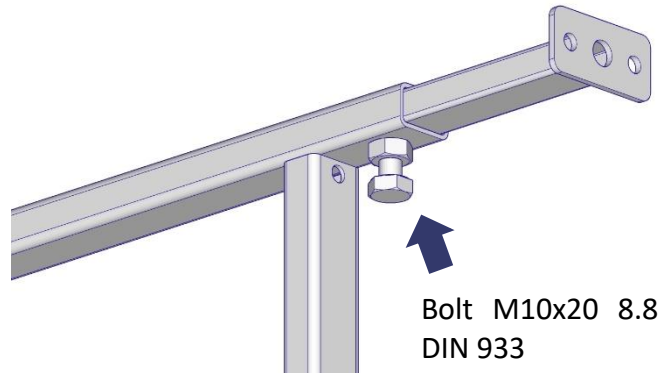
- Use bolts M10 x 35 8.8 DIN 933
- Use stop nuts M10 8 DIN 985
- The bended parts of the handrails are facing the opposite side of the cabin door



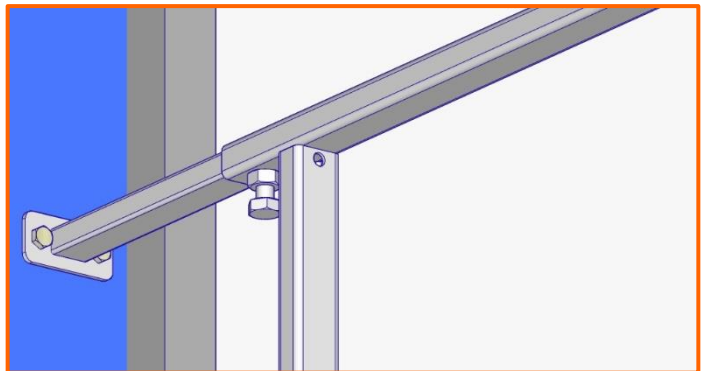


Stair Podest 1000 Assembl

- 5 Pull out the handrail extensions and fix them to the portacabin



- Use a 17 mm wrench to loose the bolt that fixes the extension to the handrail
- Use the same wrench to tighten it again once the extension has contact with the portacabin
- Use screws that suit the given portacabin (wood screws for wood, tapping screws for sheet metal etc.)





Stair Podest 1000 Assembly

6 Double check everything!

- Check the **level** using a spirit level
- Check if the **handrails** are fixed correctly
- Check if the **podest fixation** (the U-profile) has been inserted safely
- Check if the **handrail extensions** are mounted correctly to the portacabin
- If everything has been checked, the Stair Podest 1000 has been assembled correctly

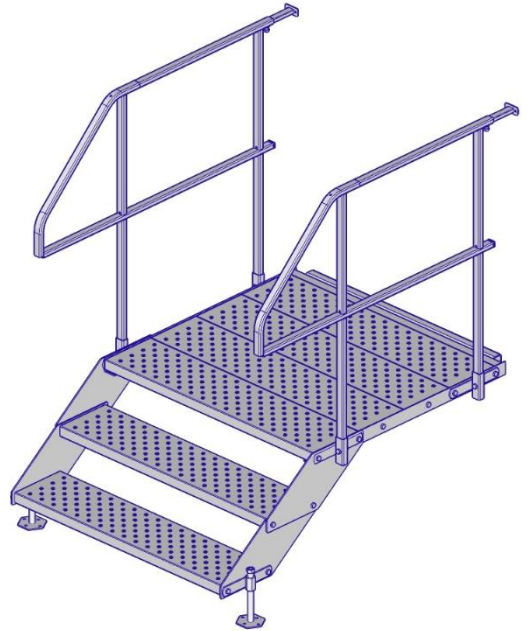




Conversion of the 1-step Stair Podest 1000 into a 2-step Stair Podest 1000



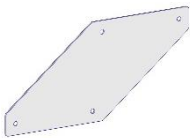
Height 230 – 360 mm



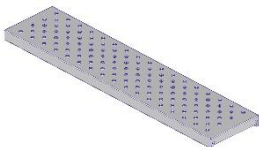
Height 405 – 535 mm

Needed extra parts

- 2 x Side Beam for Podest 1000



- 1 x Step 225x1000



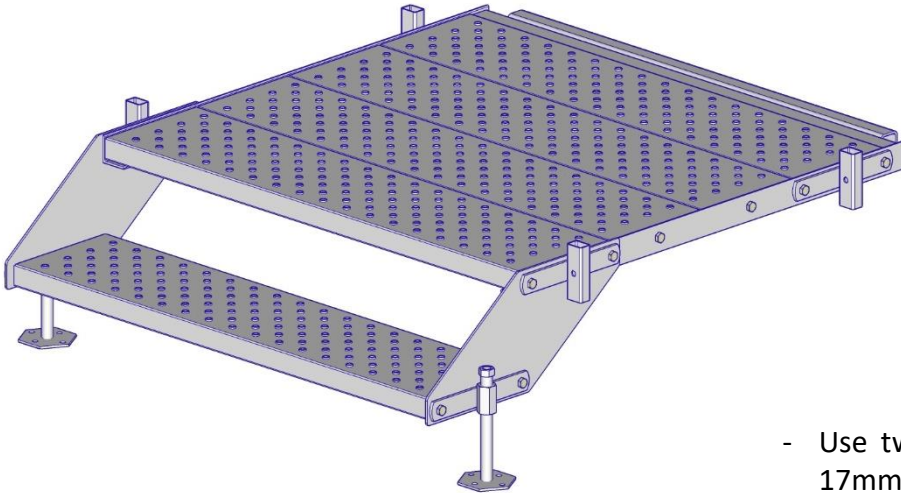
- 4 x bolt M10x35 8.8 DIN 933
- 4 x stop nut M10 8 DIN 985



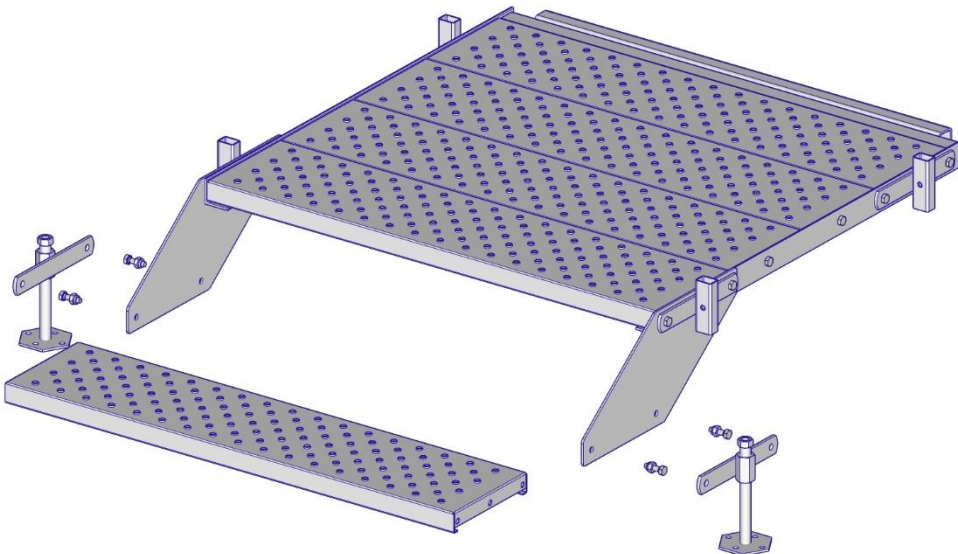
2-step Stair Podest 1000

1

Dismantle the feet and the step



- Use two 17mm wrenches or one 17mm wrench and an impact wrench with a 17mm nut to loose all bolts and nuts at the bottom end of the side beams

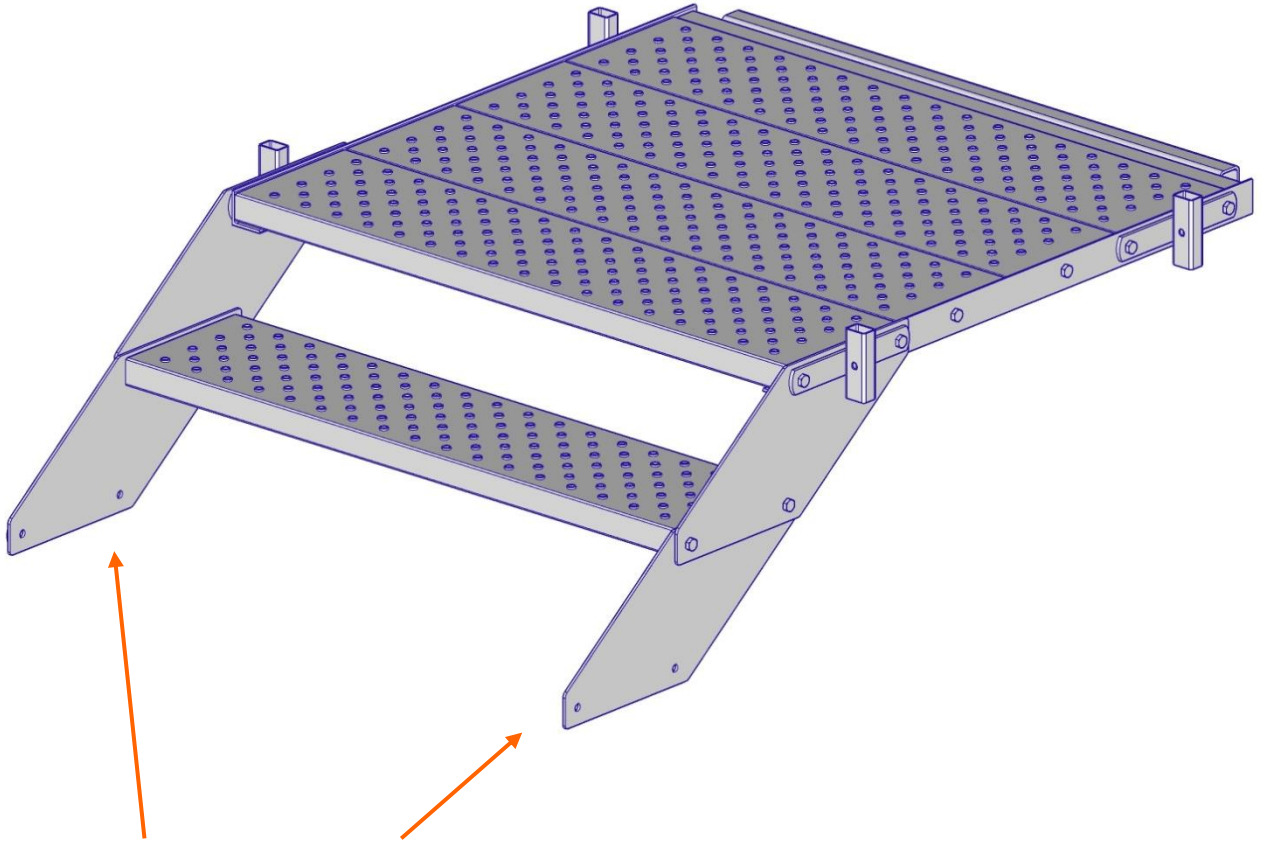


**SAFE
AT SITE**



2-step Stair Podest 1000

- 2 Insert two side beams and one step



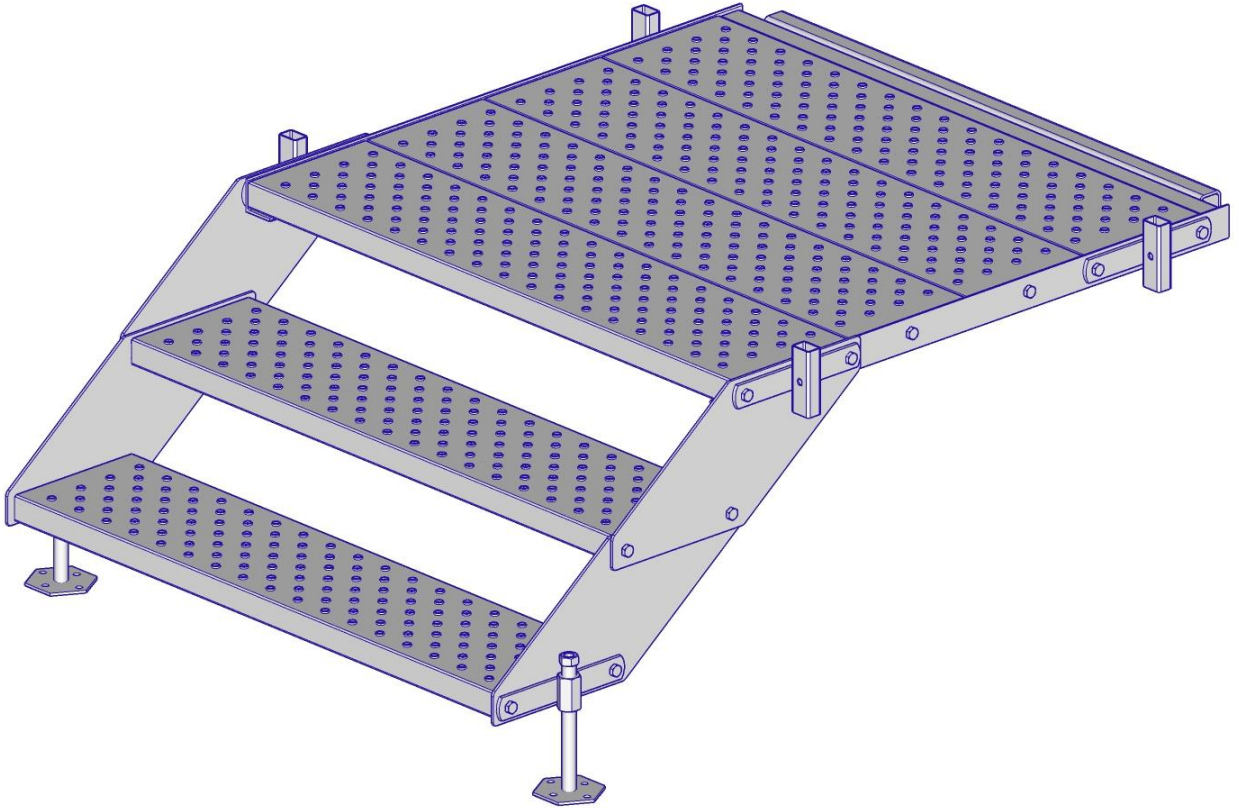
- Insert two side beams and connect everything with a step using four bolts M10x35 8.8 DIN 933 and four stop nuts M10 8 DIN 985



2-step Stair Podest 1000

3

Attach the feet and the bottom step



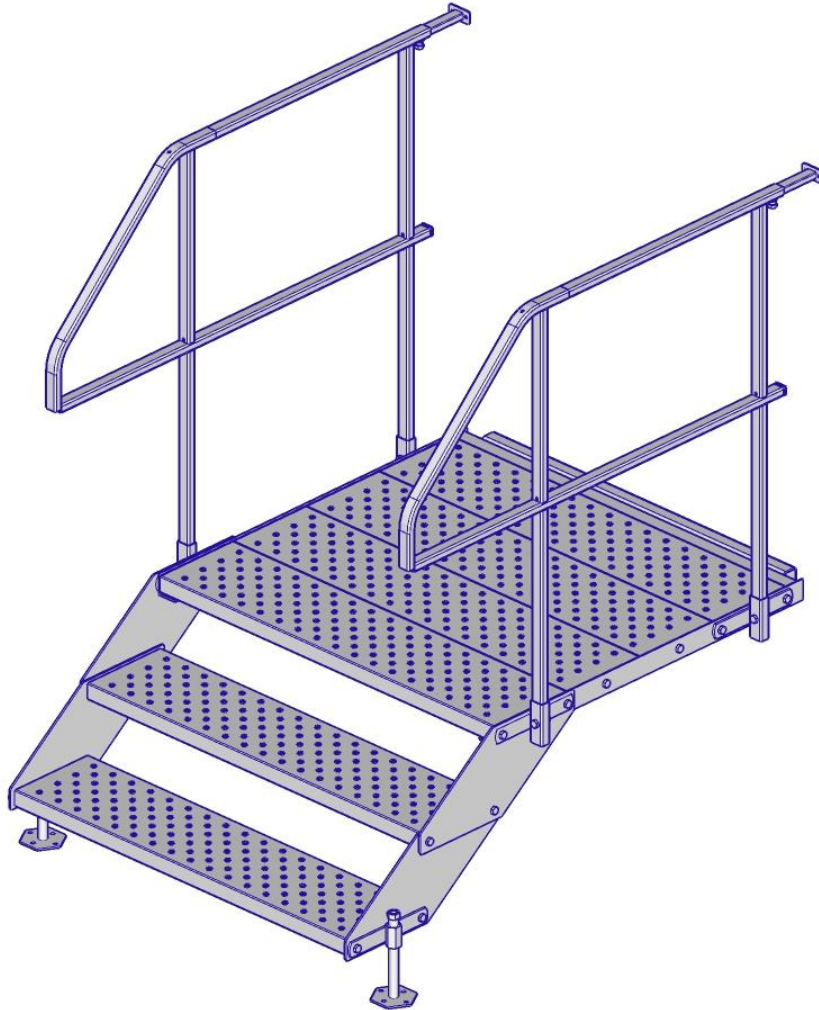
- Attach the feet and the bottom step via the remaining holes at the lower part of the side beams using four bolts M10x35 8.8 DIN 933 and four stop nuts M10 8 DIN 985



2-step Stair Podest 1000

4

Mount the 2-step Stair Podest



- The other installation steps are the same like the ones for the 1-step Stair Podest 1000



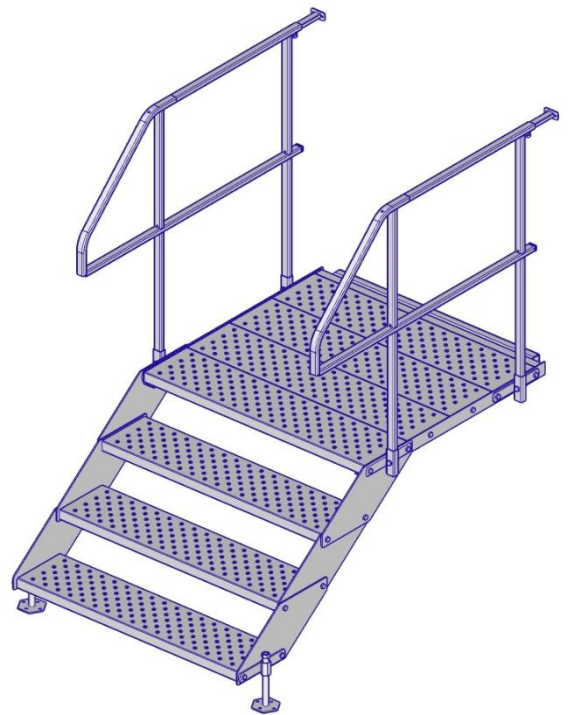
**SAFE
AT SITE**



Conversion of the 1-step Stair Podest 1000 into a 3-step Stair Podest 1000



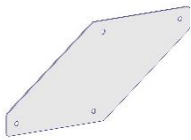
Height 230 – 360 mm



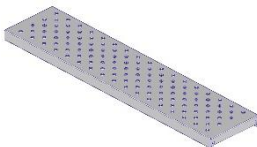
Height 580 – 710 mm

Needed extra parts

- 4 x Side Beam for Podest 1000



- 2 x Step 225x1000



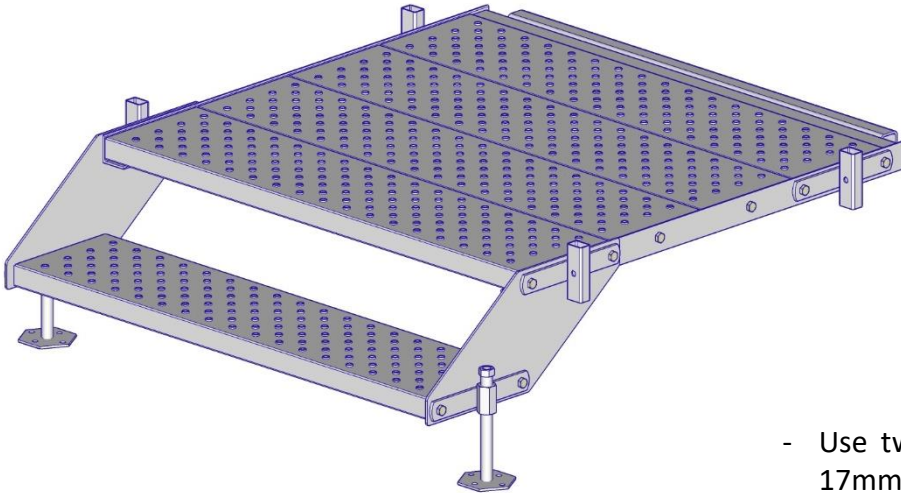
- 8 x bolt M10x35 8.8 DIN 933
- 8 x stop nut M10 8 DIN 985



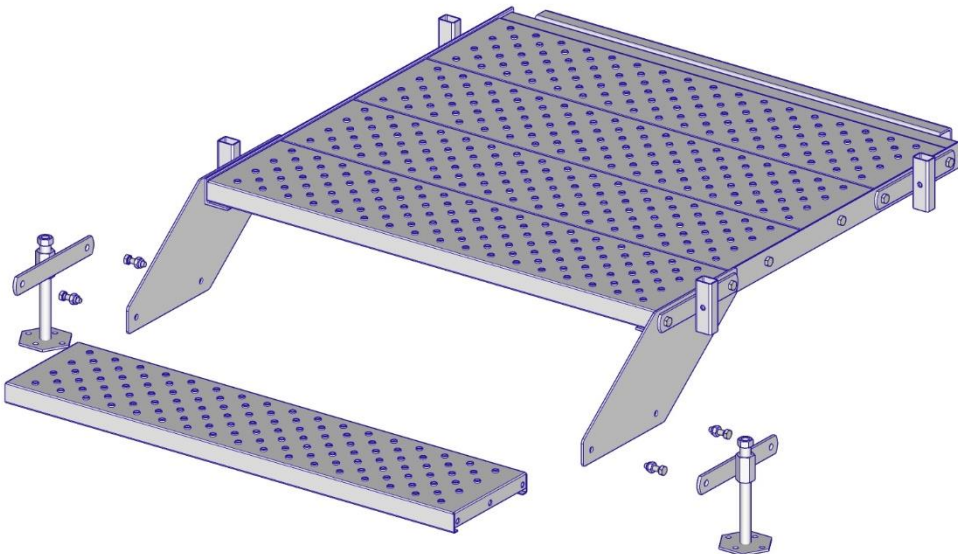
3-step Stair Podest 1000

1

Dismantle the feet and the step



- Use two 17mm wrenches or one 17mm wrench and an impact wrench with a 17mm nut to loose all bolts and nuts at the bottom end of the side beam

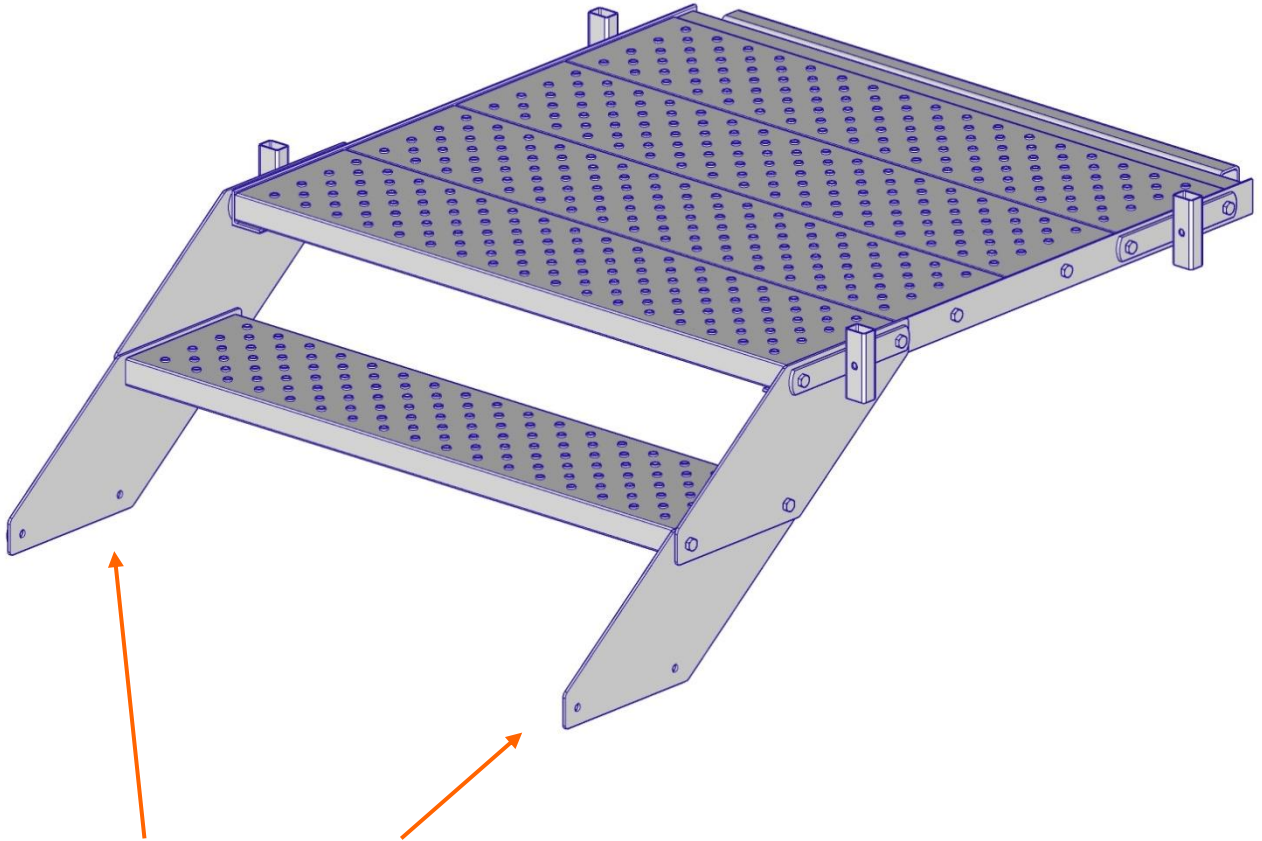


**SAFE
AT SITE**



3-step Stair Podest 1000

2

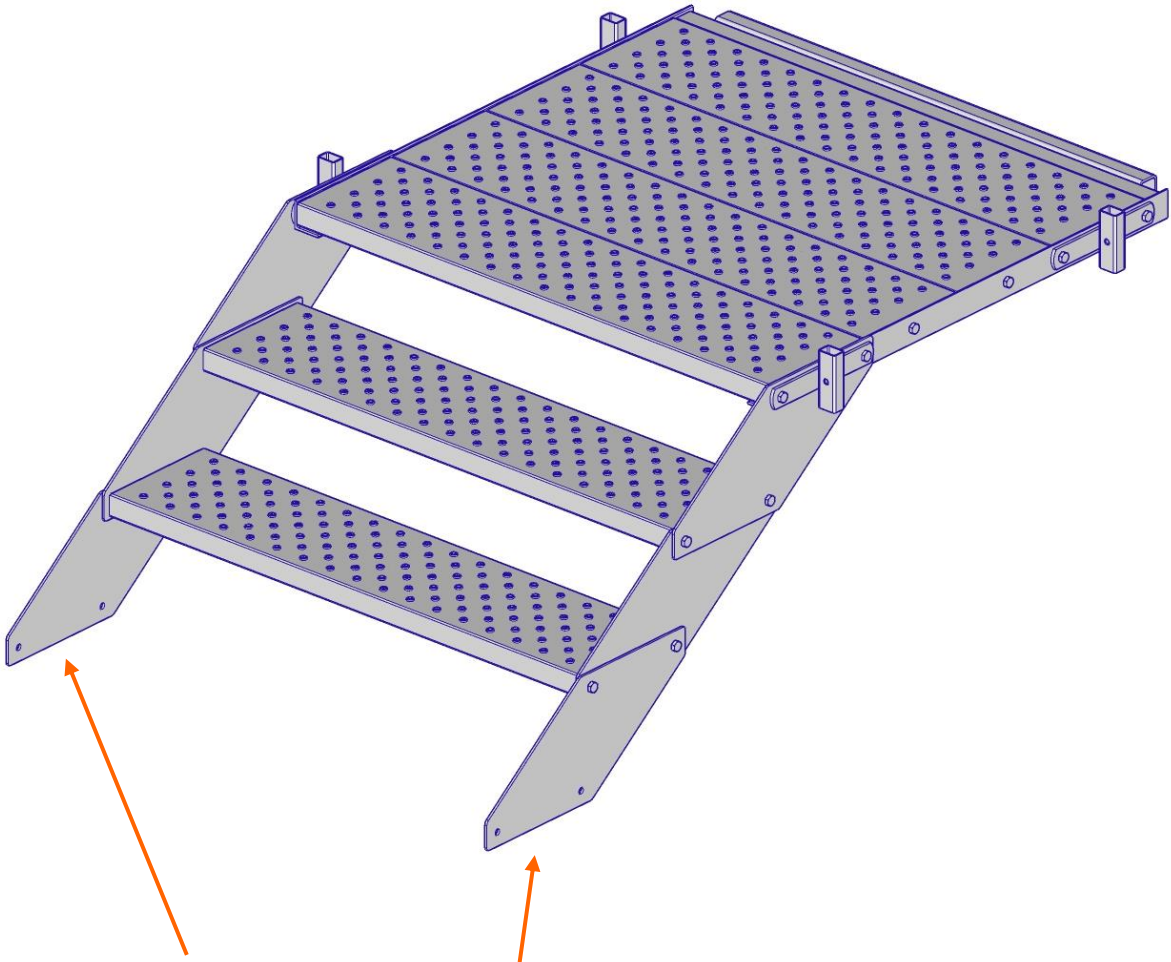


- Insert two side beams and connect everything with a step using four bolts M10x35 8.8 DIN 933 and four stop nuts M10 8 DIN 985



3-step Stair Podest 1000

- 3 Insert two side beams and one step

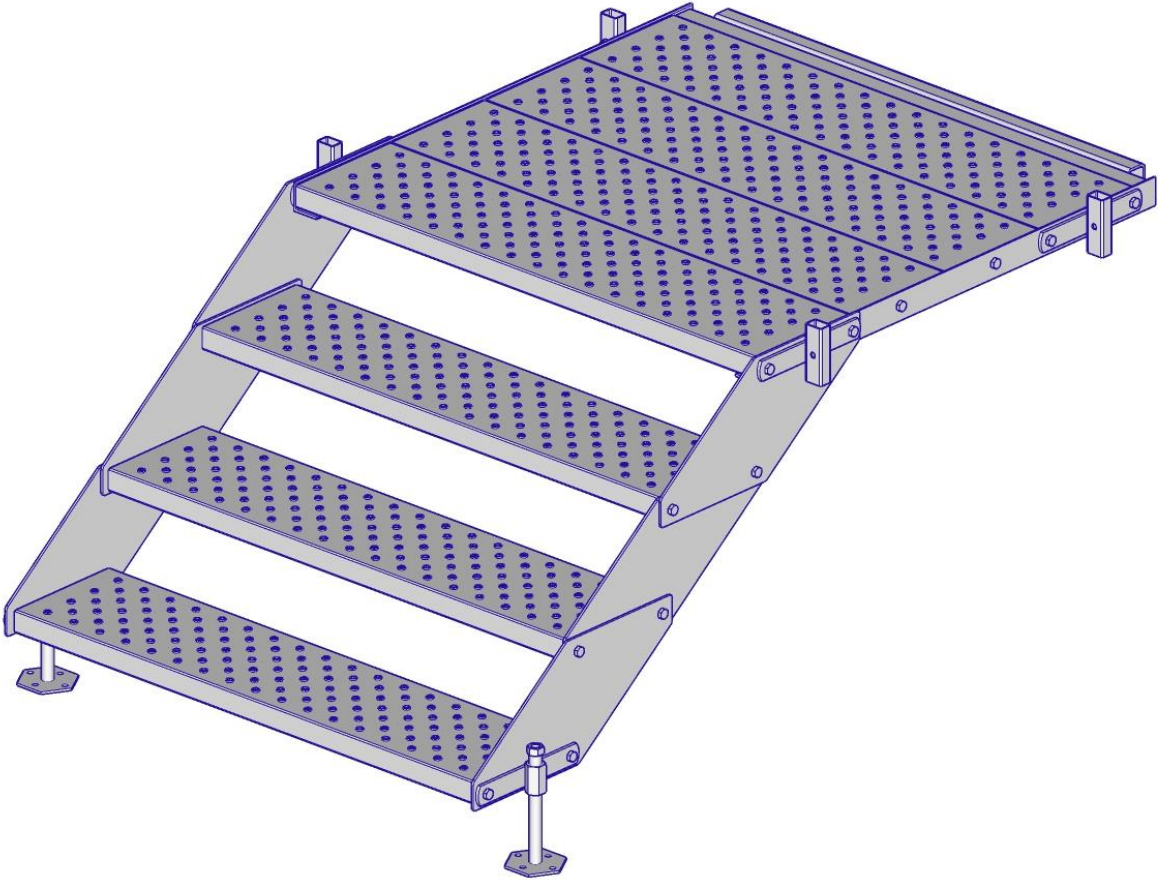


- Attach two more side beams that overlap on the outside and connect everything with one more step using four bolts M10x35 8.8 DIN 933 and four stop nuts M10 8 DIN 985



3-step Stair Podest 1000

4



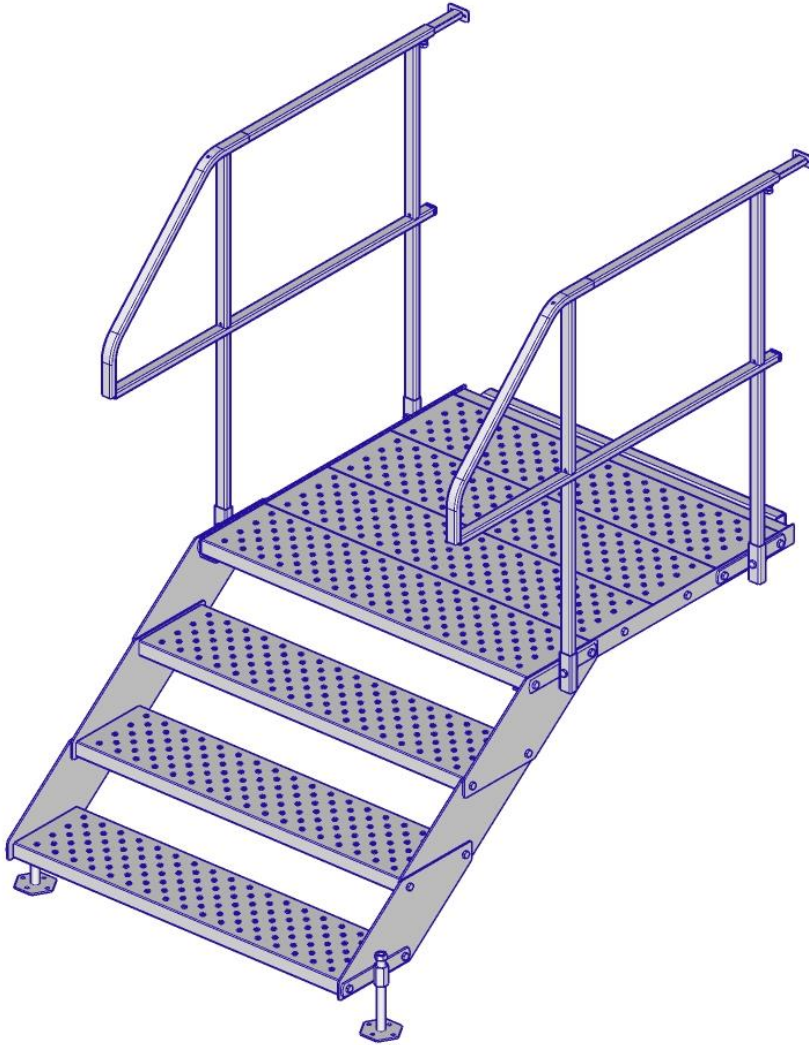
- Attach the feet and the bottom step via the remaining holes at the lower part of the side beams using four bolts M10x35 8.8 DIN 933 and four stop nuts M10 8 DIN 985



3-step Stair Podest 1000

4

Mount the 3-step Stair Podest



- The other installation steps are the same like the ones for the 1-step Stair Podest 1000



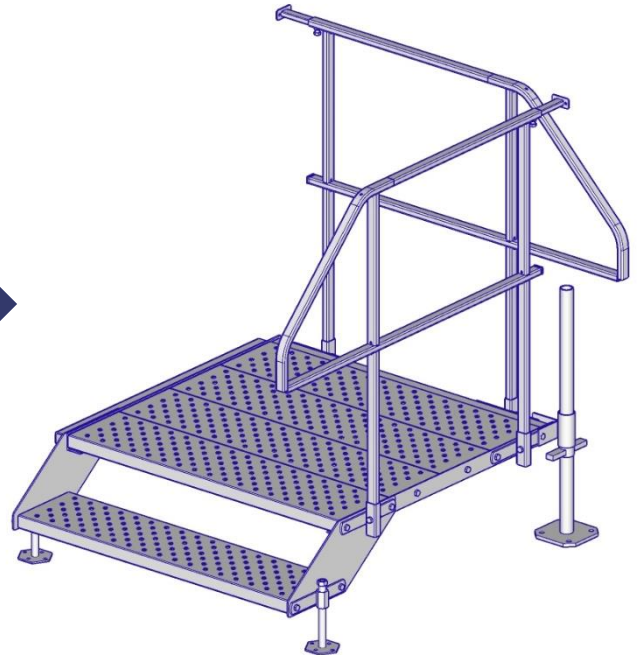
**SAFE
AT SITE**



Conversion of the 1-step Stair Podest 1000 into a 1-step Stair Podest 1000 90°



Height 230 – 360 mm



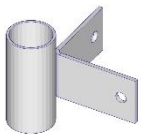
Height 230 – 360 mm

Needed extra parts

- 1 x Base Jack



- 1 x Base Jack Attachment



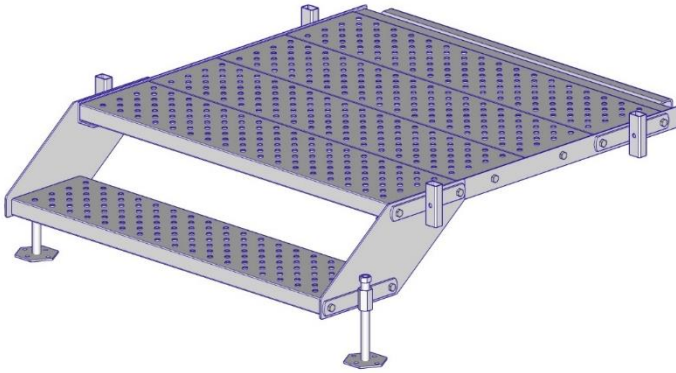
Also the 2-step Stair Podest and the 3-step Stair Podest can be converted into a 90° version using the same installation steps



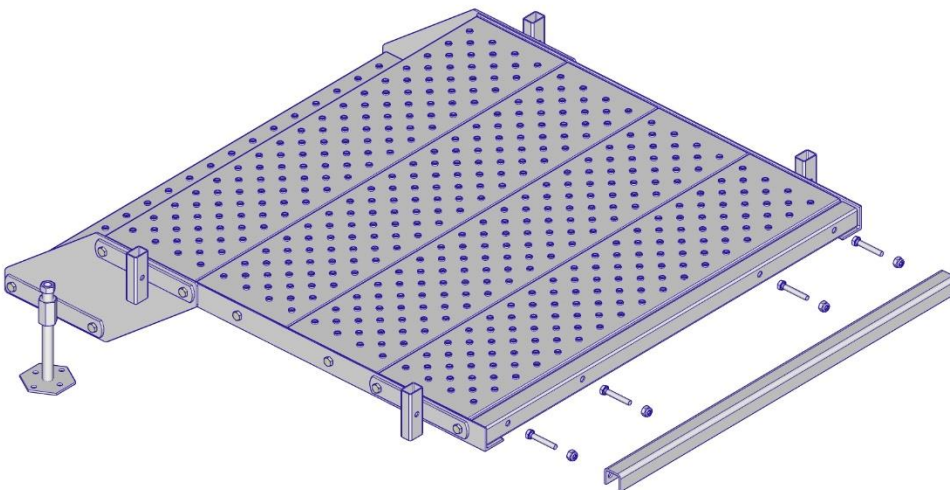
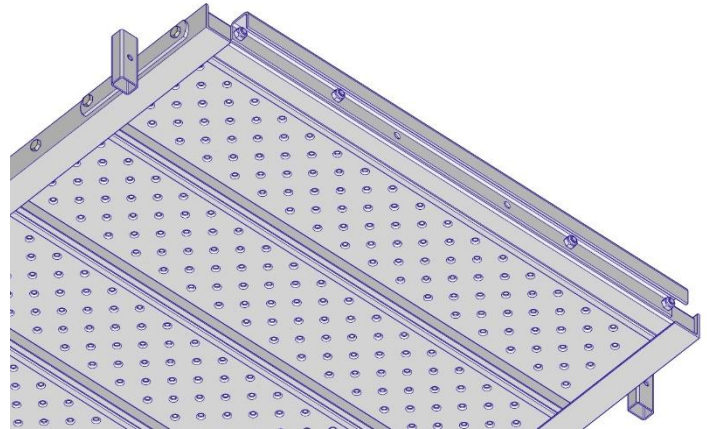
1-step Stair Podest 1000 90°

1

Dismantle the podest fixation



- Use two 17mm wrenches to dismantle the Podest Fixation

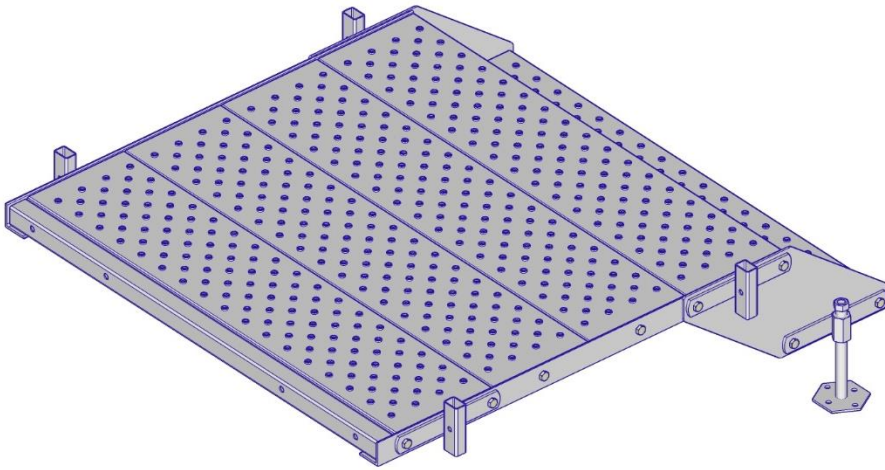


**SAFE
AT SITE**

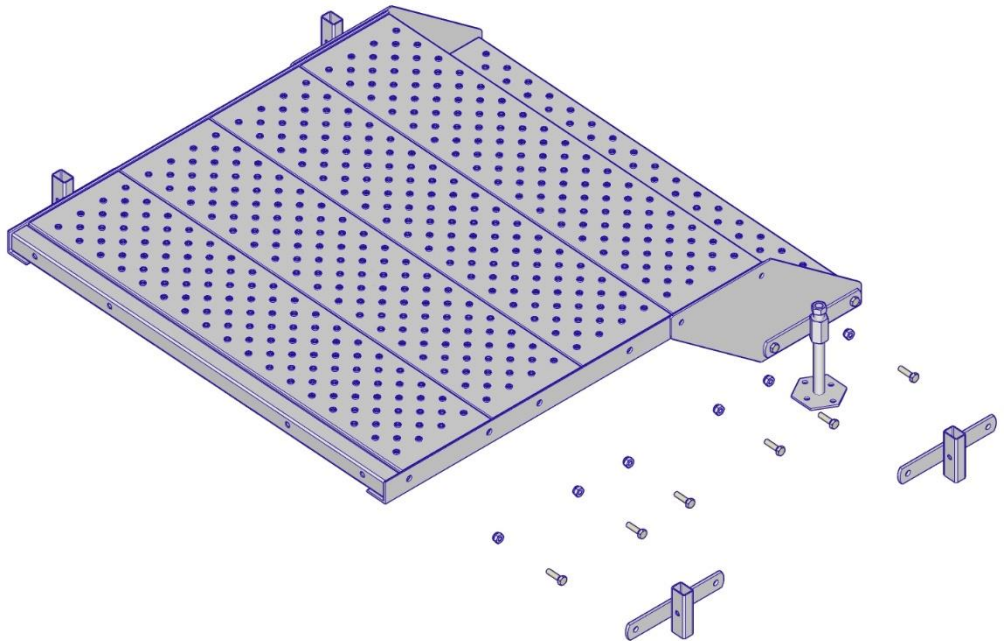


1-step Stair Podest 1000 90°

- 2 Dismantle the handrail holders



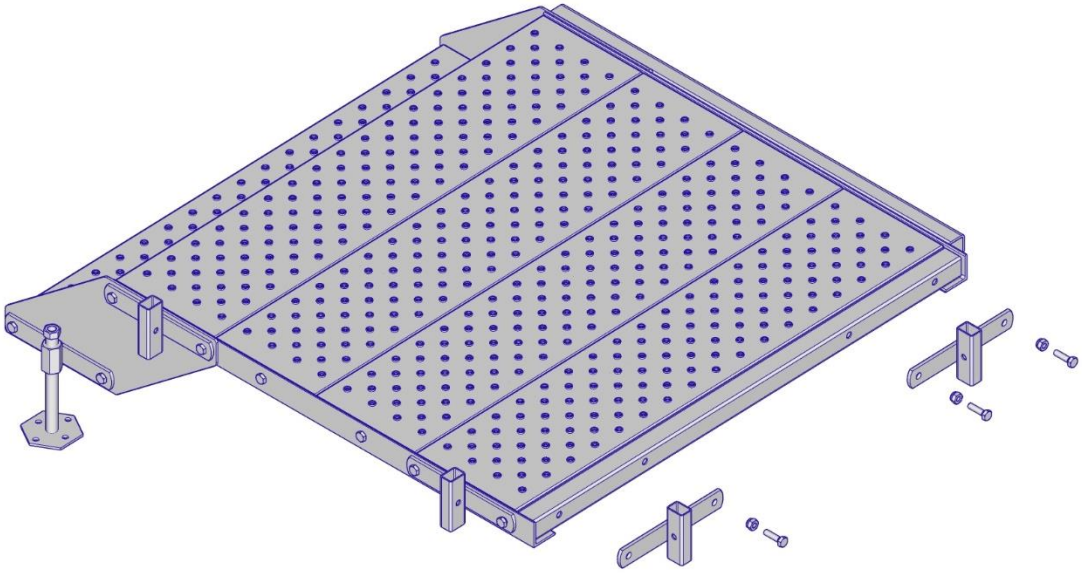
- Use two 17mm wrenches to dismantle two handrail holders on one side



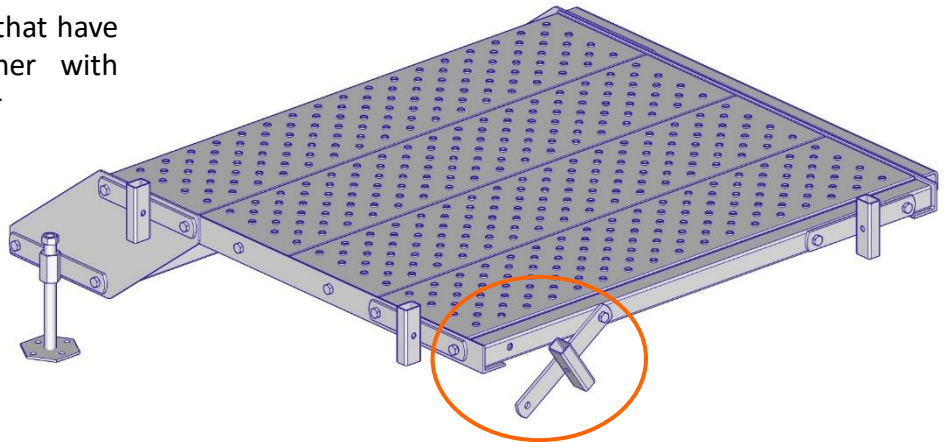


1-step Stair Podest 1000 90°

- 3 Re-attach the handrail holders



- Re-attach both handrail holders using the bolts and nuts that have been dismantled together with the podest fixation earlier

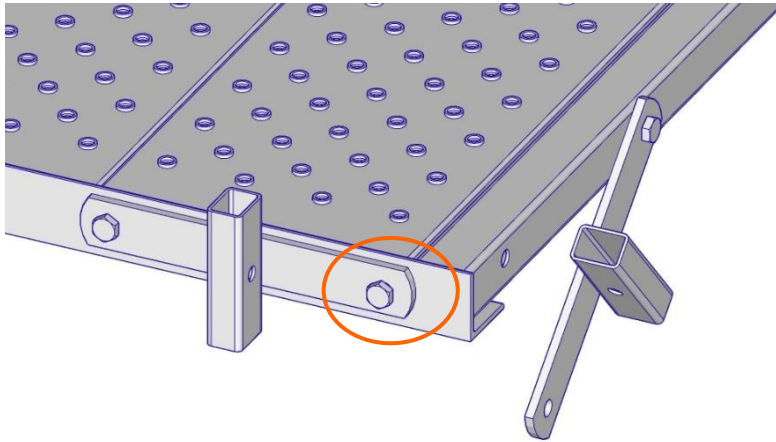


- Leave the hole in the corner open for now

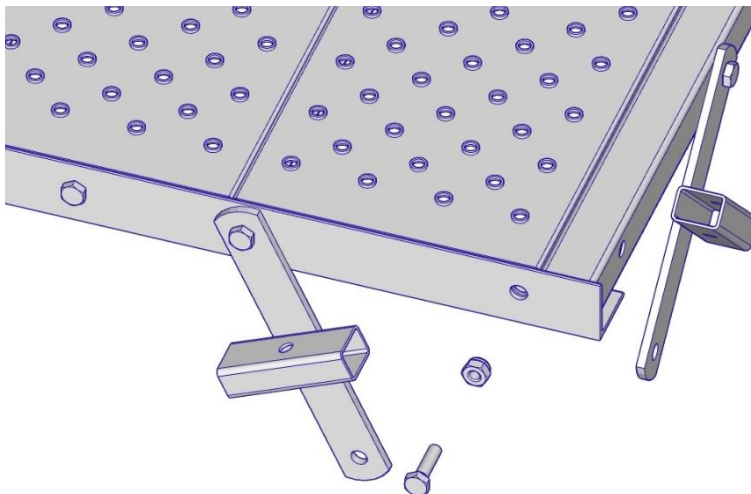


1-step Stair Podest 1000 90°

- 4 Prepare the other corner handrail holder



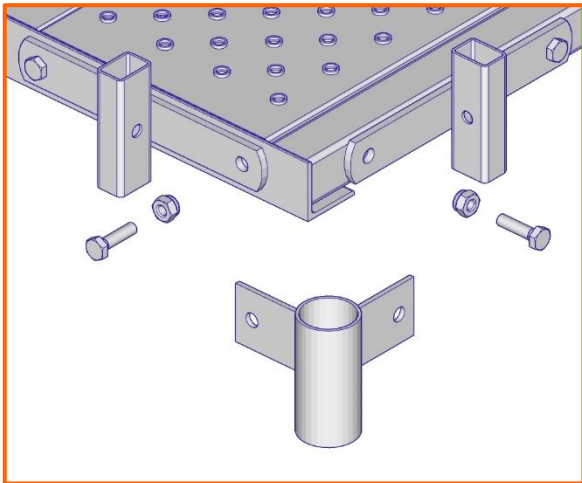
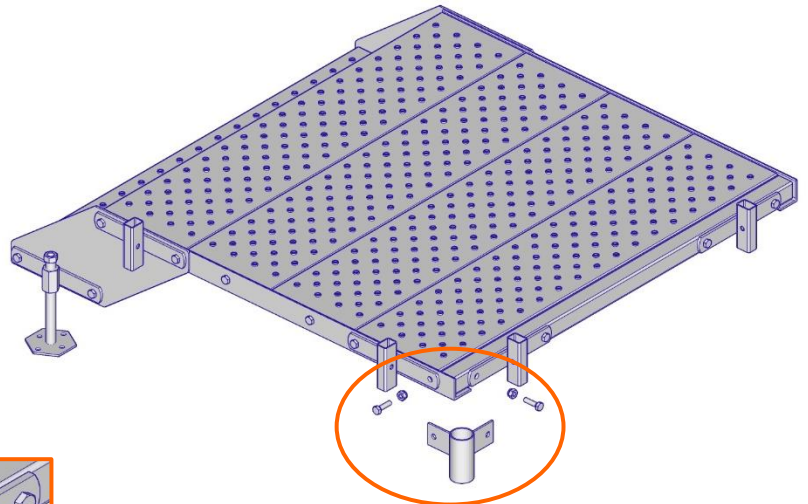
- Loose one bolt and nut of the other corner handrail holder



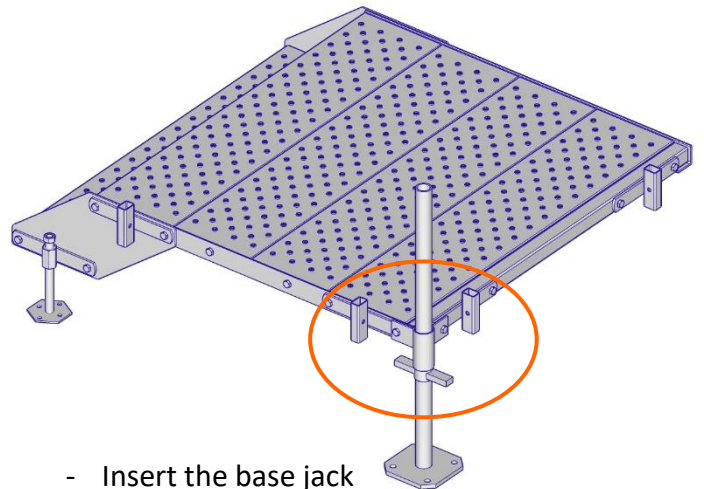


1-step Stair Podest 1000 90°

- 5 Attach the base jack attachment and the base jack



- Attach the base jack attachment using the detached screws and by that fix the handrail holders as well



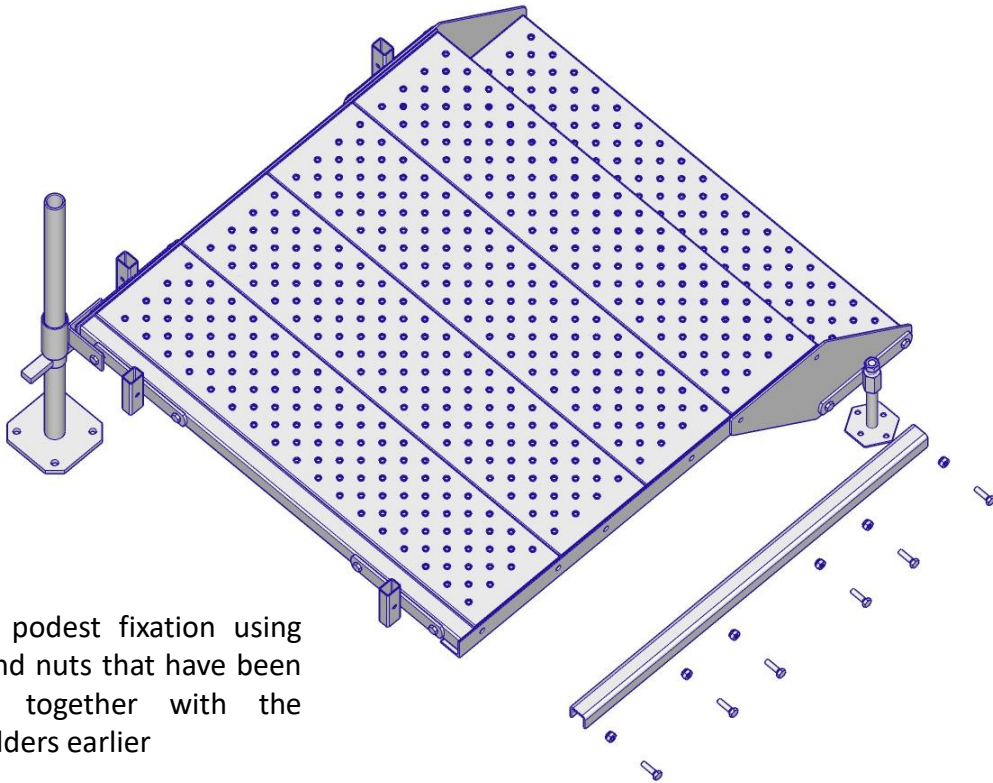
- Insert the base jack



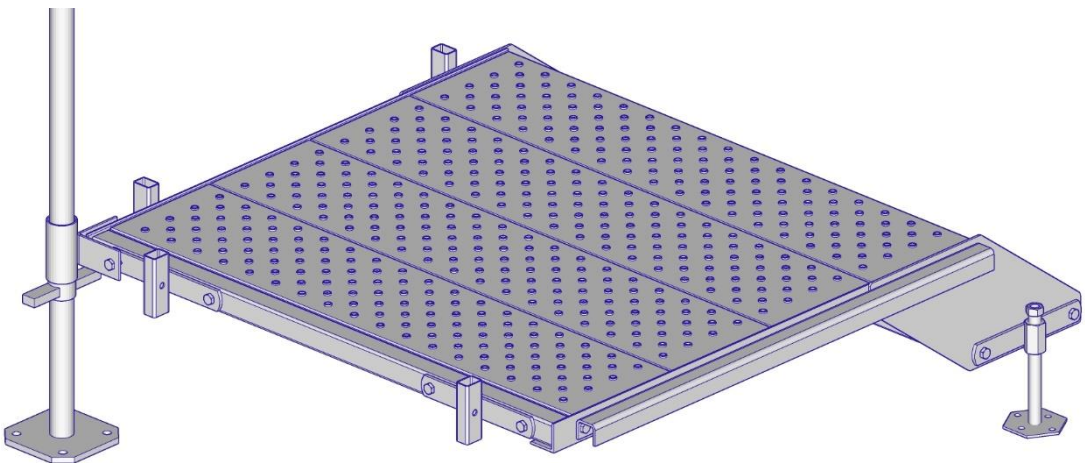
1-step Stair Podest 1000 90°

6

Attach the podest fixation



- Attach the podest fixation using the bolts and nuts that have been dismantled together with the handrail holders earlier



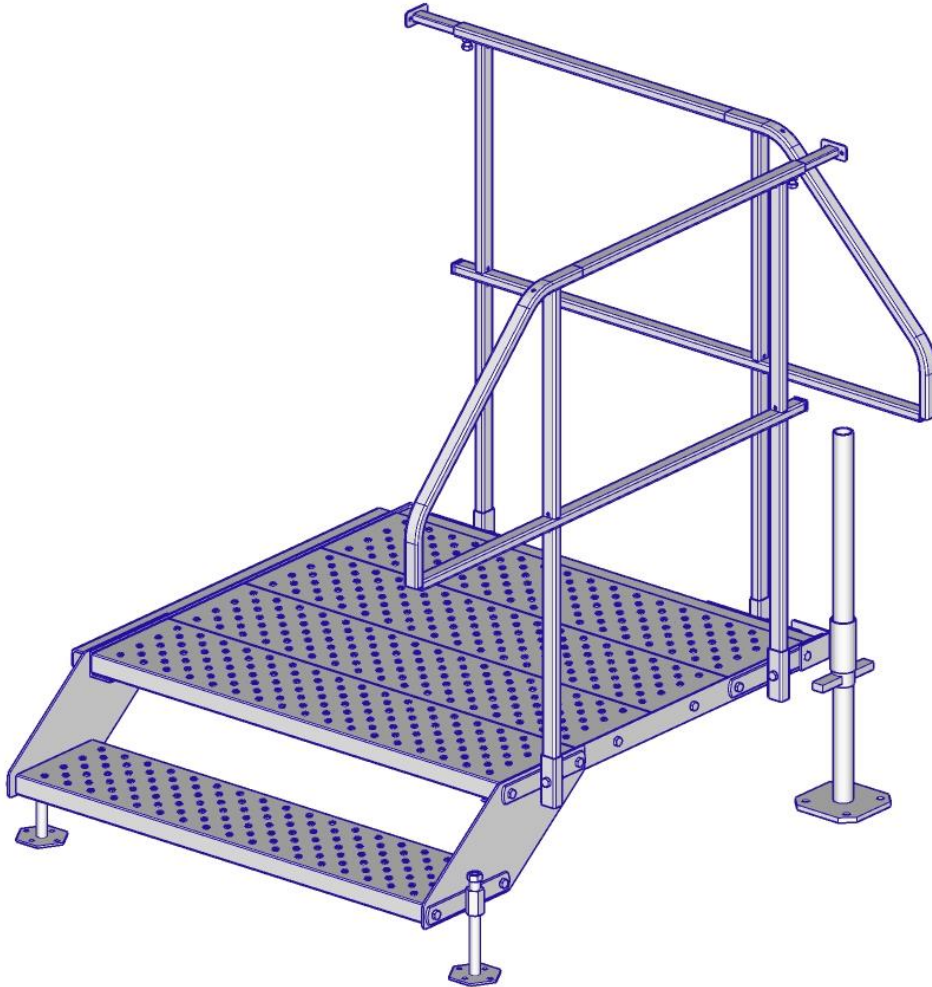
**SAFE
AT SITE**



1-step Stair Podest 1000 90°

7

Mount the 1-step Stair Podest 1000 90°



- The other installation steps are the same like the ones for the 1-step Stair Podest 1000





General Safety

When installing all Stair Podests, safety must be observed. The maximum load on individual components must always be kept in mind.

The maximum height and inclination of each Stair Podest must be observed.

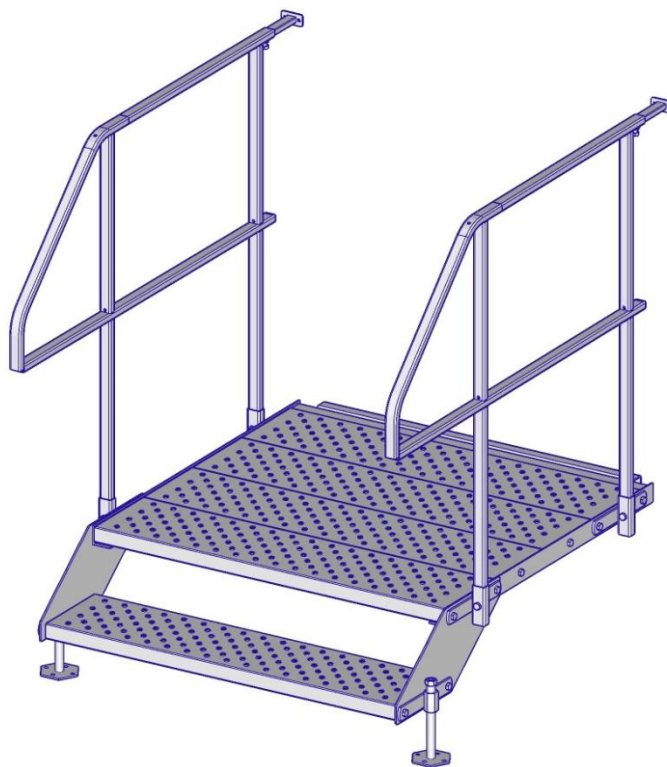
If Stair Podests show significant damage that affects the statics, it must be removed from traffic immediately.

Before any use, special attention must be paid to the intrinsic safety. Statutory regulations and guidelines of the local authorities must be observed and followed at all times.

When in doubt please contact Safe At Site before usage.



**SAFE
AT SITE**



**SAFE
AT SITE**

EVERYONE, EVERYDAY

Safe At Site AB

Lägervägen
SE-832 56 Frösön
Sweden

Phone: +46 63 554 11 80

info@safesite.com
www.safesite.com