

Workshop manual

PG 280 S



English

Contents

1 Introduction

1.1 Document description.....	3
1.2 Target group.....	3
1.3 Revisions.....	3
1.4 Safety.....	3
1.5 Servicing tools.....	3

2 Safety

2.1 Safety definitions.....	4
2.2 General safety instructions.....	4
2.3 Symbols on the product.....	4

3 Servicing data

3.1 Symbols in the diagrams.....	5
3.2 Tightening torques	6

4 Servicing tools

4.1 Servicing tools overview.....	7
-----------------------------------	---

5 Product overview for repair and servicing

5.1 Component overview PG 280 S.....	8
5.2 Component overview electrical enclosure.....	9
5.3 Component view of the motor connection box PG 280 S 1-phase.....	10

6 Repair and servicing

6.1 Motor.....	11
6.2 Grinding head.....	12

7 Troubleshooting

7.1 Function tests.....	14
7.2 To do a function test of the grinding head.....	14
7.3 To do a function test of the electrical system.....	14
7.4 To do a function test of the motor.....	14
7.5 Before you do the troubleshooting.....	14
7.6 The motor does not start.....	15
7.7 The motor stops.....	17

8 Diagrams

8.1 Wiring diagram.....	18
-------------------------	----

9 Technical data

9.1 Electrical specifications	19
-------------------------------------	----

1 Introduction

1.1 Document description

This manual gives a full description of how to do maintenance and repair on the product. It also gives safety instructions that the personnel must obey.

1.2 Target group

This manual is for personnel with a general knowledge of how to do repair and do servicing. All personnel that do repair or do servicing on the product must read and understand the manual.

1.3 Revisions

Changes to the product can cause changes to the maintenance work and spare parts. Separate information is sent out for each change.

Read the manual together with all received information about changes to maintenance and spare parts for the product.

1.4 Safety



WARNING: All personnel that repair or do servicing on the product must read and understand the safety instructions in this workshop manual.

1.5 Servicing tools

The manual gives information about necessary servicing tools. Always use original tools from Husqvarna.

2 Safety

2.1 Safety definitions

Warnings, cautions and notes are used to point out specially important parts of the manual.



WARNING: Used if there is a risk of injury or death for the operator or bystanders if the instructions in the manual are not obeyed.



CAUTION: Used if there is a risk of damage to the product, other materials or the adjacent area if the instructions in the manual are not obeyed.

Note: Used to give more information that is necessary in a given situation.

2.2 General safety instructions

- Read and obey this workshop manual.
- Obey the local safety regulations when you repair or do servicing of the product.
- The safety equipment you use must obey local regulations.
- Use only the equipment that the manufacturer recommends.
- Use personal protective equipment.
- Use protective gloves and safety glasses. The safety glasses must obey the ANSI Z87.1 for US or EN166 for EU countries.
- Use earmuffs when the product is in operation.
- Always stop the product before you repair or do servicing of the product.
- Remove flammable materials from the work area. The product can cause sparks.
- Do not use the product if the power cord or cables are damaged.
- Disconnect the product from the mains socket.
- If possible, keep the power cord disconnected when you repair or do servicing of the product.
- Use cables adapted to outdoor operation.
- Do not touch the wires when the product is on. An electrical shock can cause injury.
- Do not point compressed air to your body. Compressed air can go into the blood stream.
- Always tighten the nuts and the bolts on the product correctly.
- Do not use the power cord to lift the product. Do not pull the power cord to disconnect the product.
- Do checks of the product for warning labels that are damaged. Replace the warning labels that are damaged.
- Always read the warning labels of product supplies.
- Obey the local waste regulations.

2.3 Symbols on the product



WARNING: Not careful or incorrect use can result in injury or death to the operator or others.



Read the manual carefully and make sure that you understand the instructions before you use the product.



Always put on hearing protection, eye protection and breathing protection.



WARNING! The dust can cause breathing problems. Use breathing protection. Do not breathe exhaust fumes. Always make sure that there is good airflow.



This product is in compliance with applicable EC directives.

Note: Other symbols/decals on the product refer to special certification requirements for some markets.

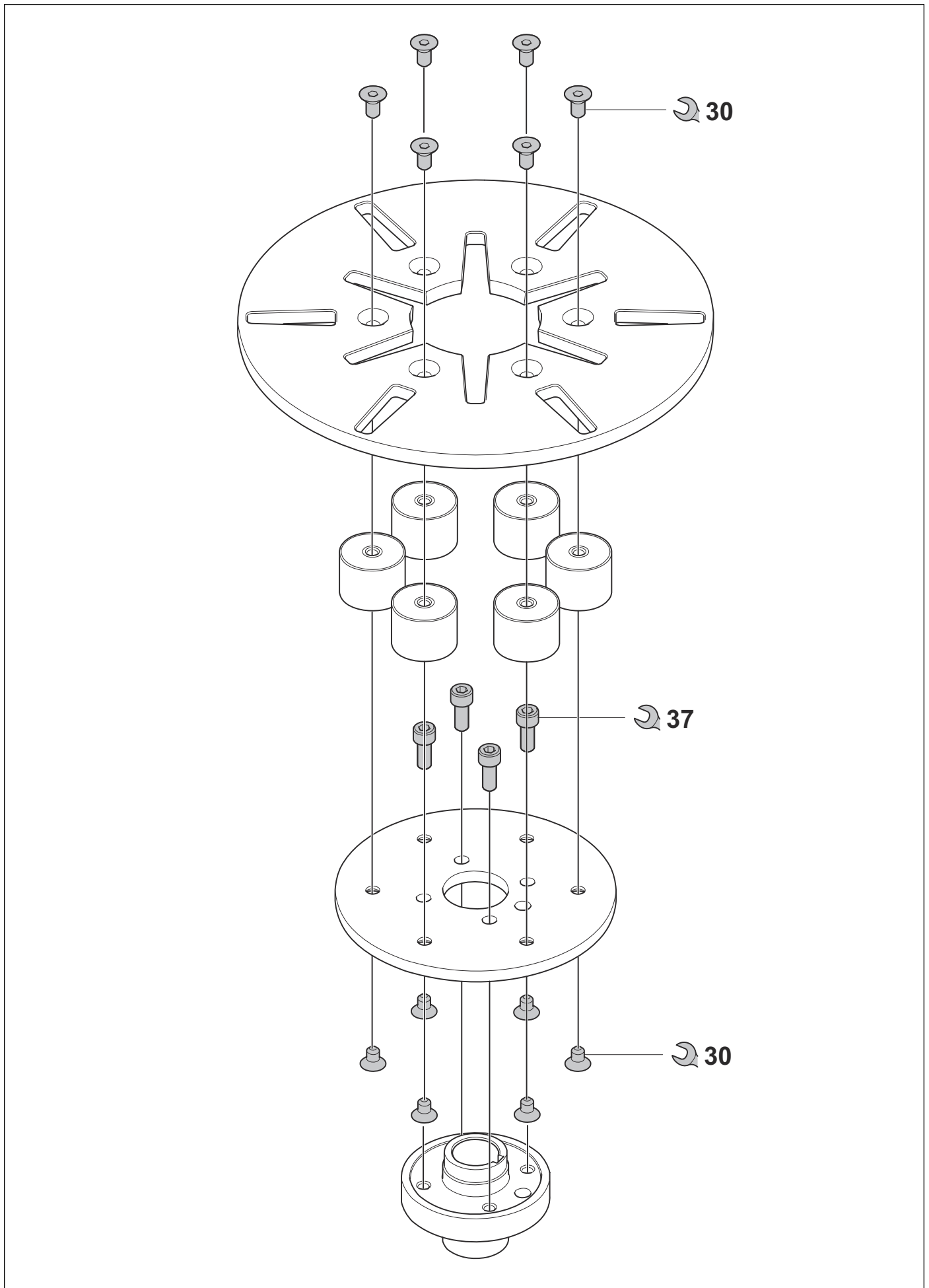
3 Servicing data

3.1 Symbols in the diagrams



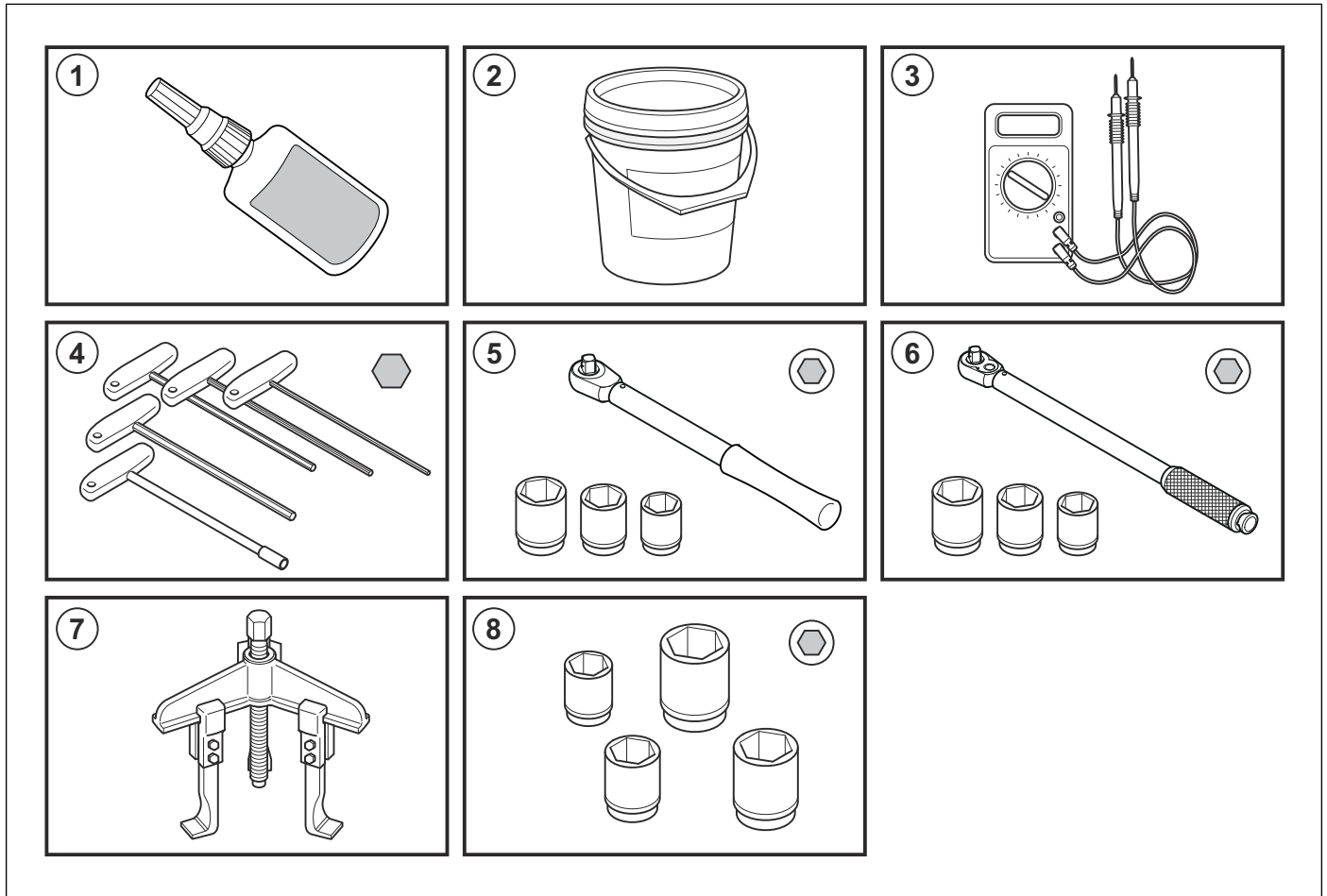
Tightening torque, Nm

3.2 Tightening torques



4 Servicing tools

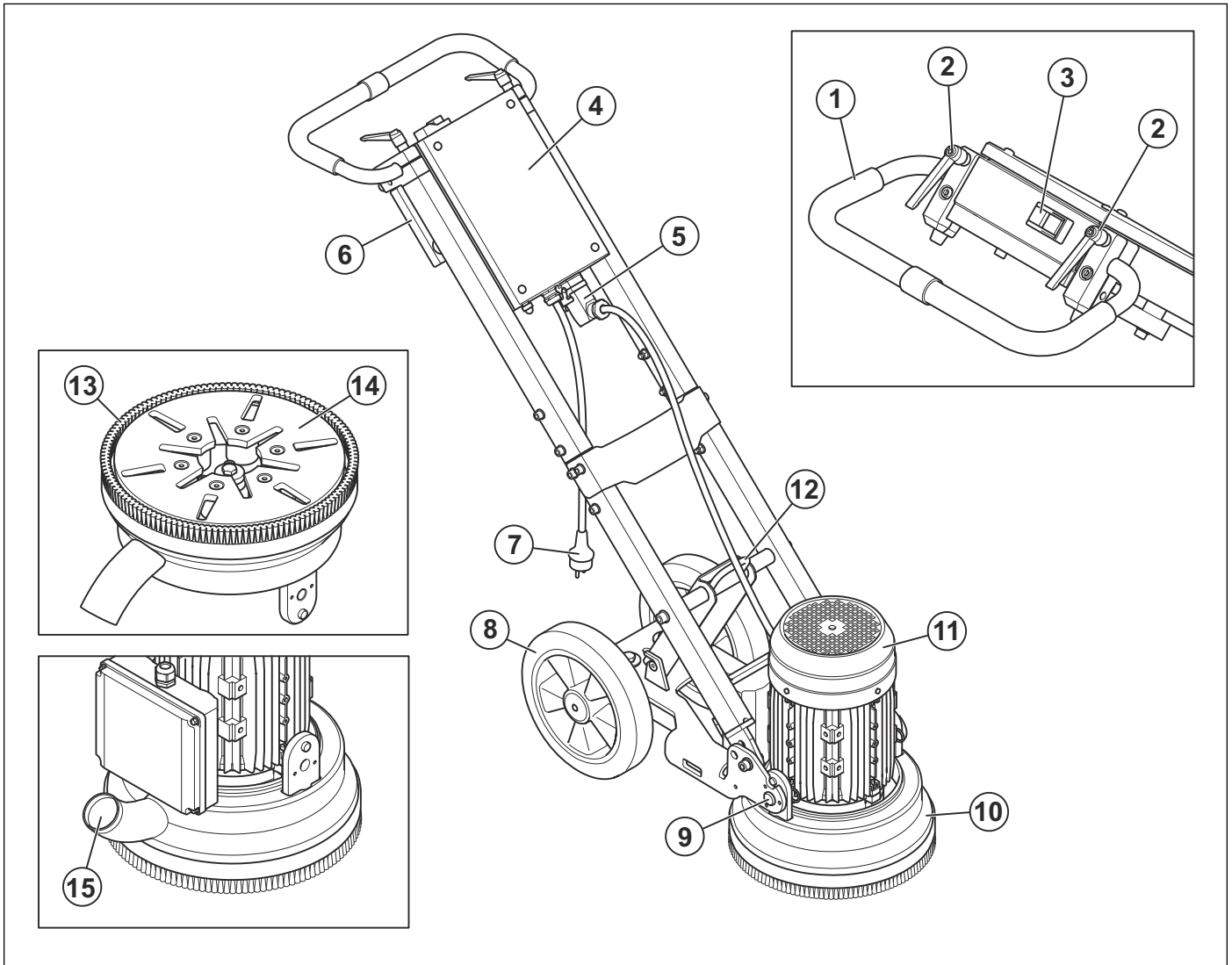
4.1 Servicing tools overview



Position	Designation	Used for	Order No./ Source
1	Thread lock medium	To assemble the motor and grinding head. To assemble the tool holder.	
2	Grease	To assemble the motor and grinding head.	
3	Multimeter	To control the functions of the electrical system	Amprobe 37XR-A® or other model that can measure inductance
4	Hex key, kit 2.5 - 10 mm	General	525 45 52-01
5	Socket wrench	General	531 11 95-32
6	Torque wrench 30 - 100 Nm	General	
7	Inner puller	To remove the tool holder assembly	There are many manufacturers, for example: Kukko, Baur-eihe 202
8	Socket 8-18 mm	General	

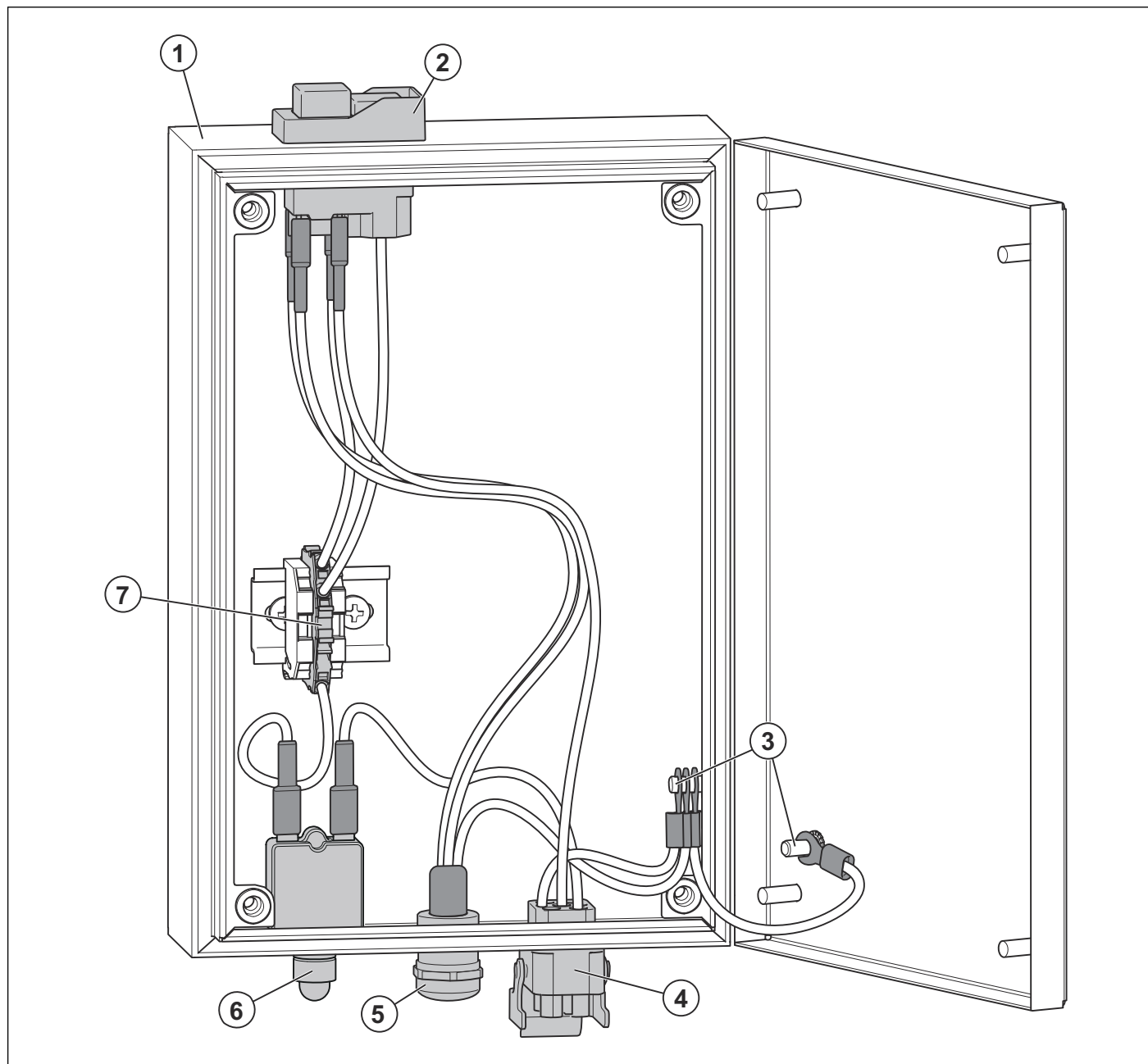
5 Product overview for repair and servicing

5.1 Component overview PG 280 S



- | | |
|--|--|
| 1. Handle/Handlebar | 9. Lock bolt to attach the motor/grinding head |
| 2. Lock knobs for handlebar adjustment | 10. Grinding head cover |
| 3. ON/OFF switch | 11. Electric motor |
| 4. Electrical enclosure | 12. Lifting eye |
| 5. Connection for motor cable | 13. Brush strip |
| 6. Counterweight | 14. Tool plate |
| 7. Power plug | 15. Connection, vacuum hose |
| 8. Rubber wheels | |

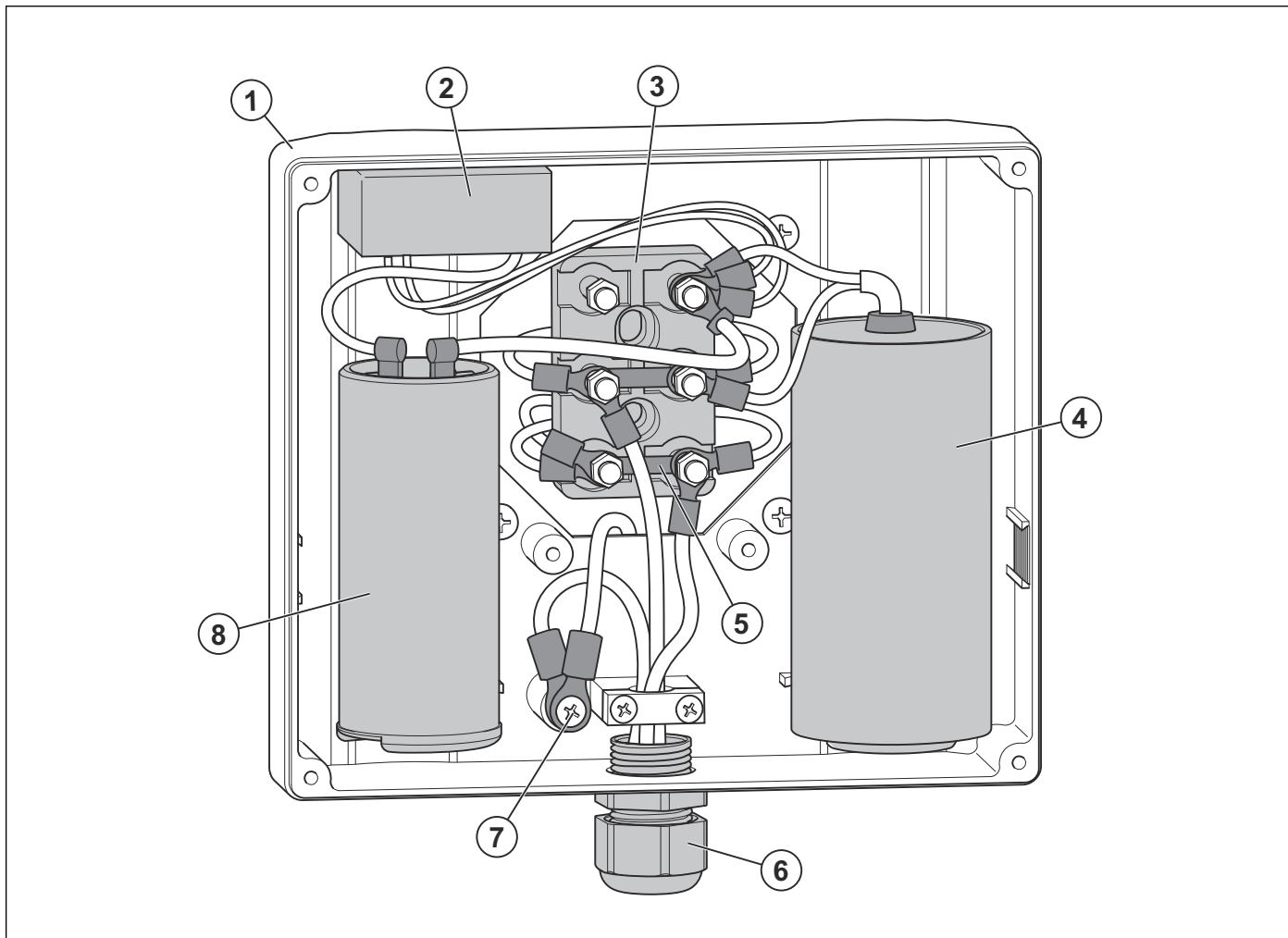
5.2 Component overview electrical enclosure



1. Electrical enclosure
2. ON/OFF switch
3. Ground points
4. Motor cable connector

5. Connection to mains plug
6. Resettable fuse
7. Terminal block

5.3 Component view of the motor connection box PG 280 S 1-phase



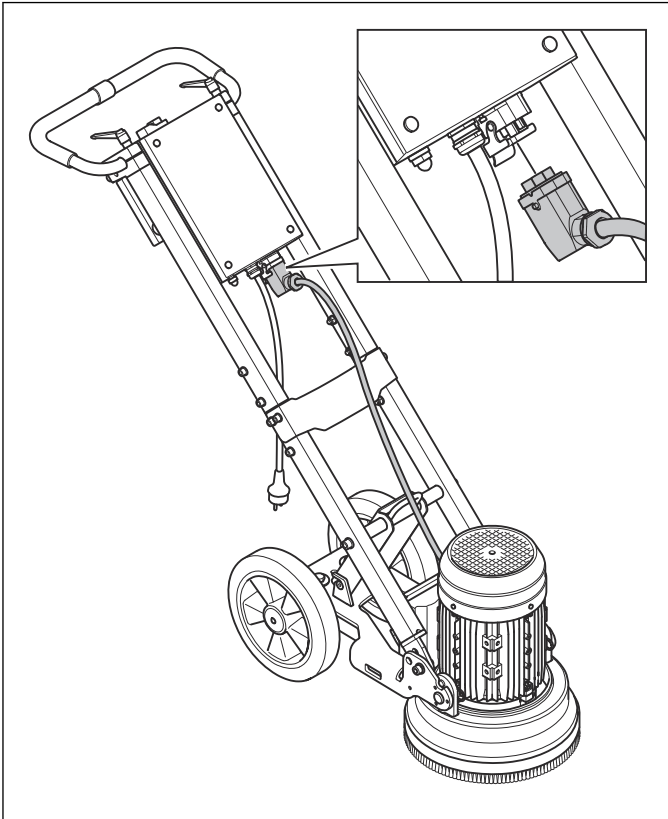
1. Motor connection box
2. Electronic motor starter switch
3. Connection bridge
4. Motor run capacitor
5. Connection bridge
6. Connection to electrical enclosure
7. Ground point
8. Motor start capacitor

6 Repair and servicing

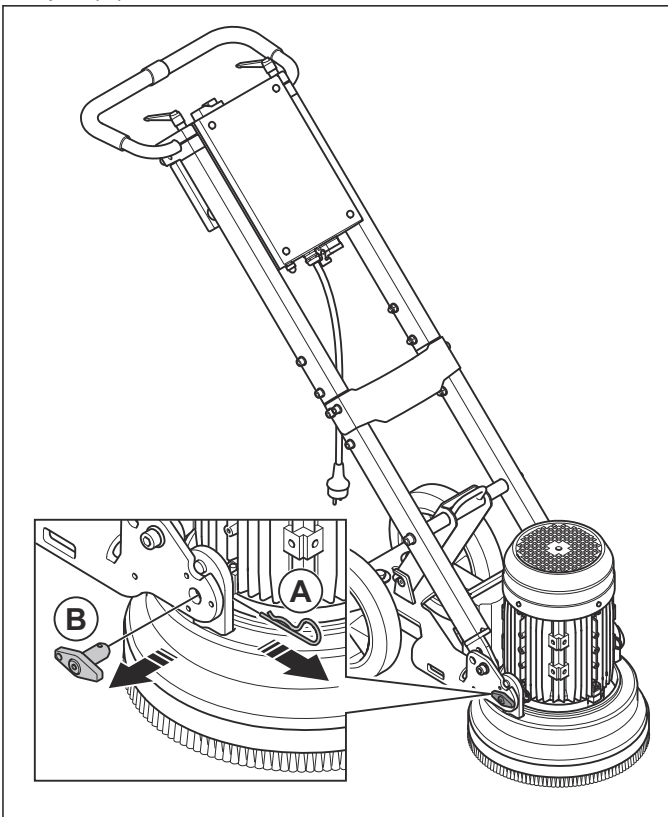
6.1 Motor

6.1.1 To remove the motor and grinding head

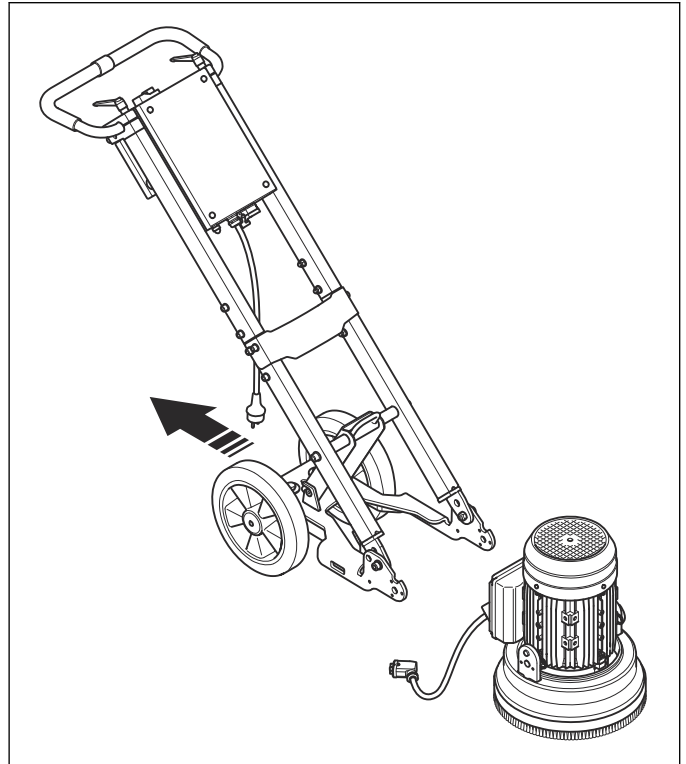
1. Remove the cable from the connector.



2. Remove the retaining pin (A) and remove the clevis pin (B).



3. Remove the motor and grinding head from the frame.

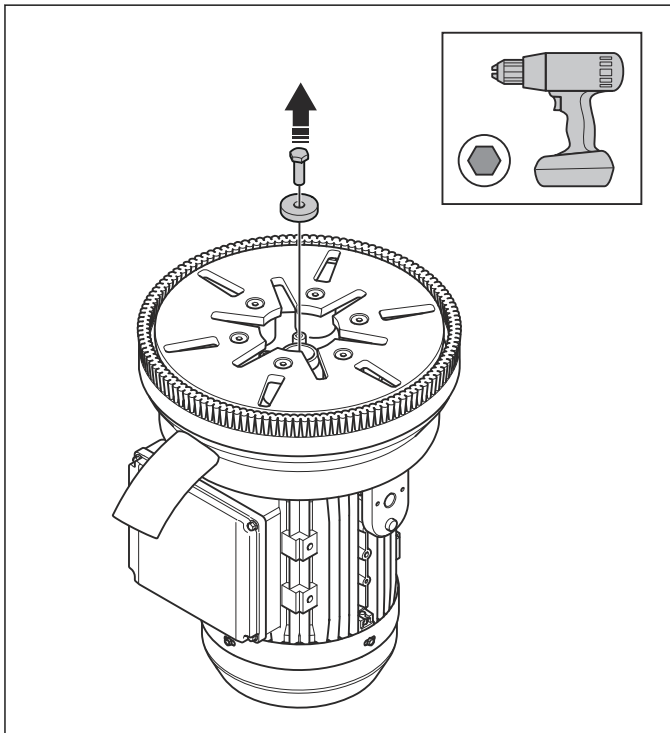


6.2 Grinding head

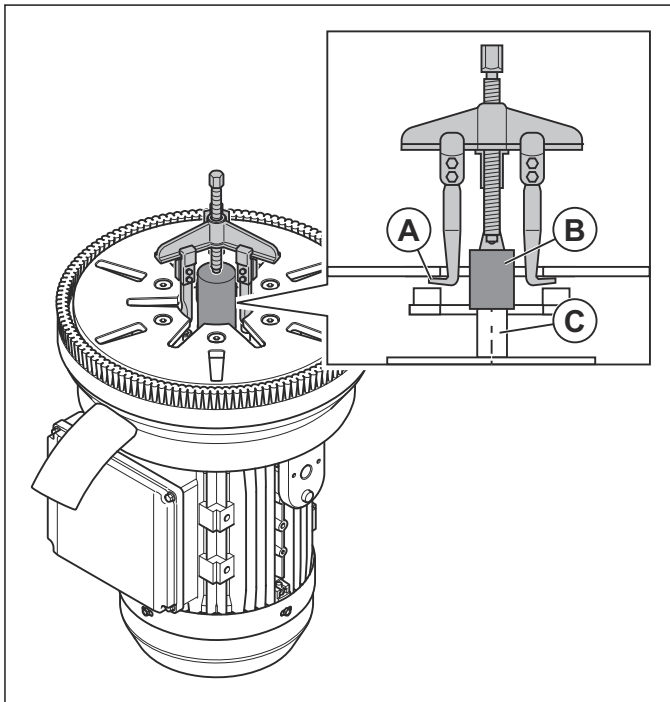
6.2.1 To remove the grinding head

To remove the tool holder assembly, use an internal puller and an extension. Refer to *Servicing tools overview on page 7*.

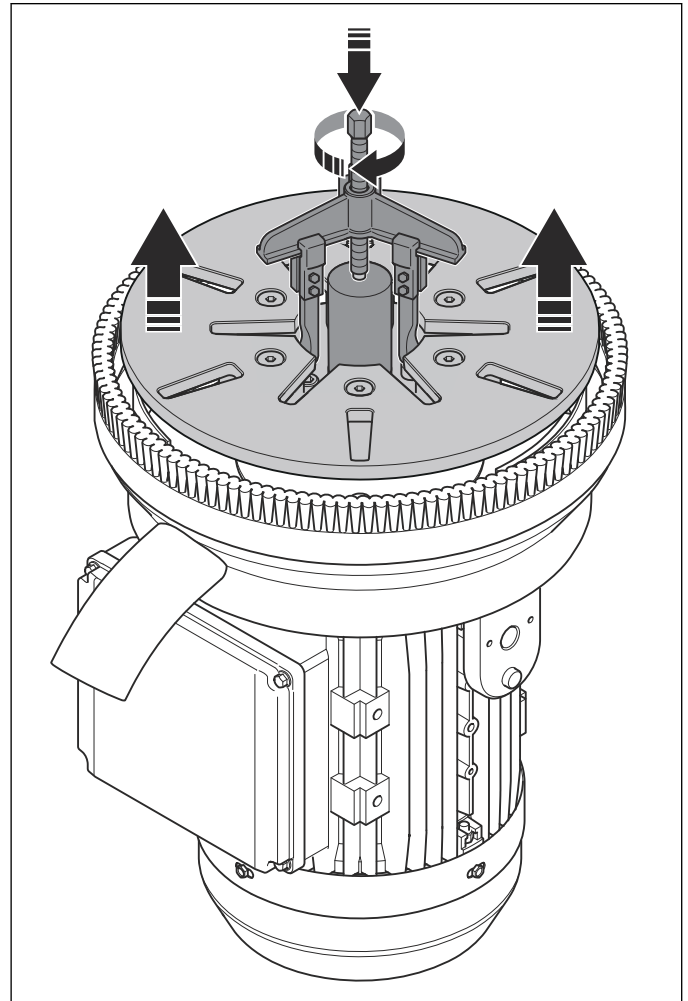
1. Remove the screw that attaches the holder assembly to the motor shaft, with an impact wrench.



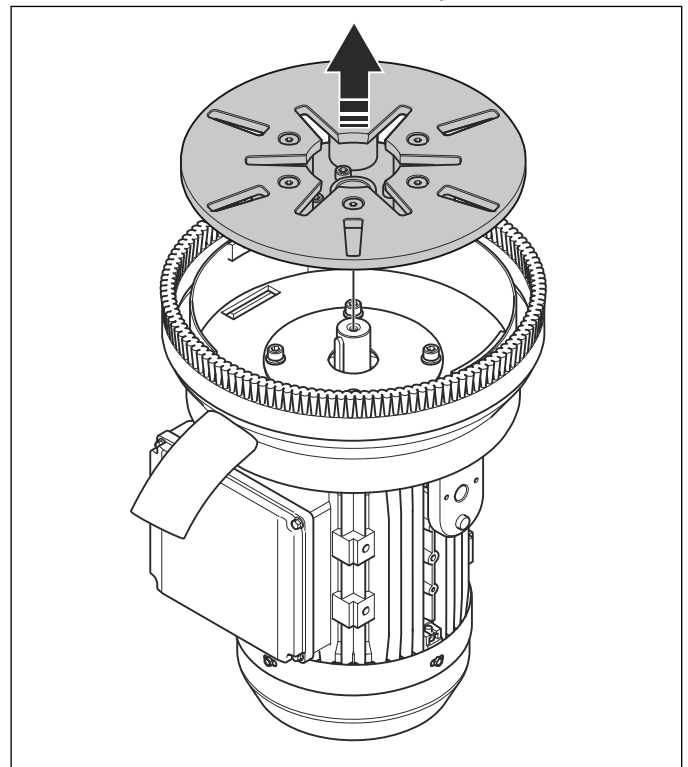
2. Put the internal puller claws (A) on the inner edges of the center hole of the holder. Put the extension (B) on the motor shaft (C).



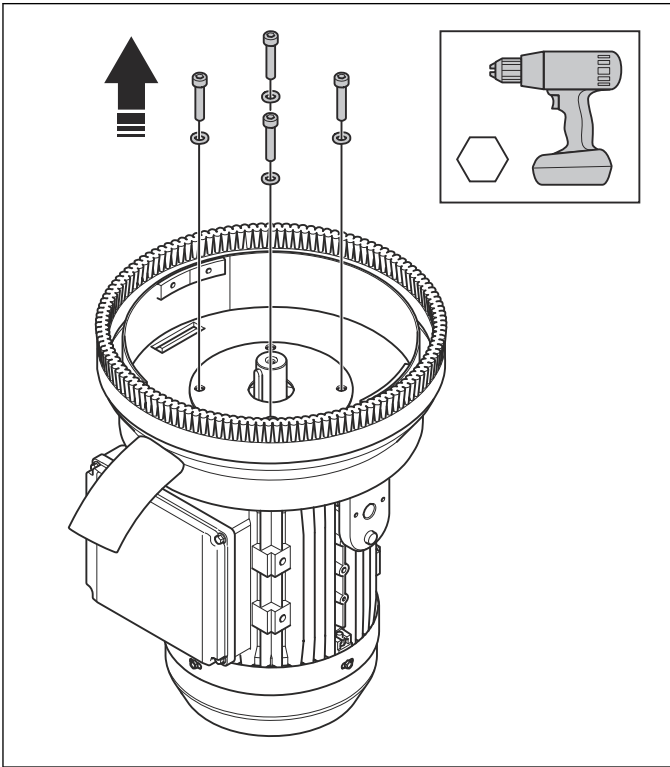
3. Remove the tool holder assembly from the motor shaft slowly to prevent damage to the vibration damping units.



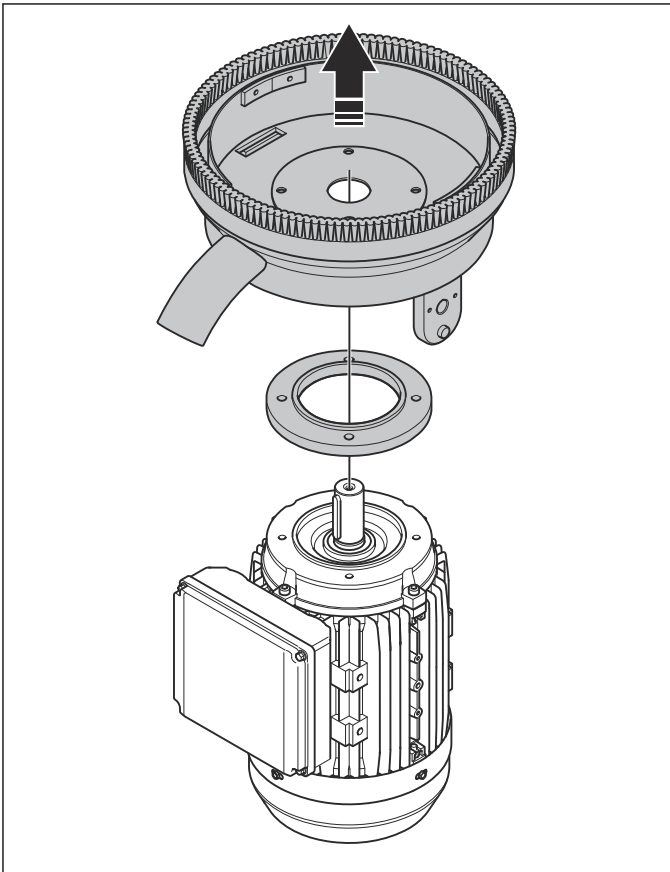
4. Remove the tool holder assembly.



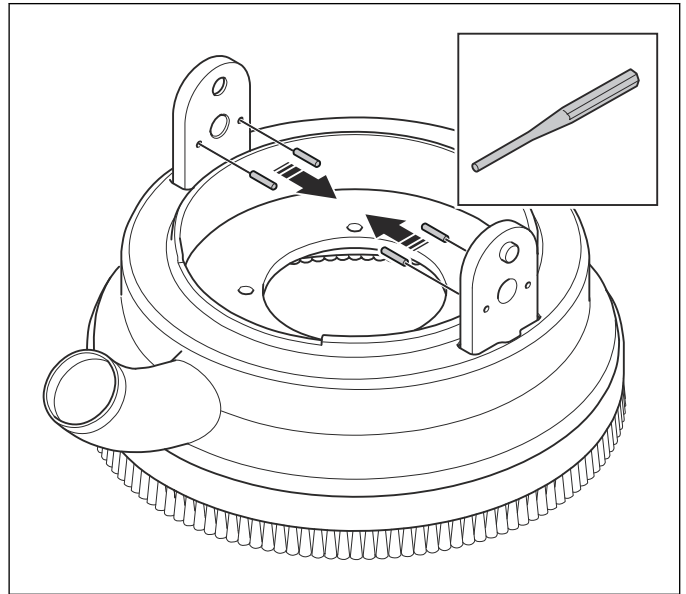
5. Remove the parts that hold the dust cover, spacer and motor.



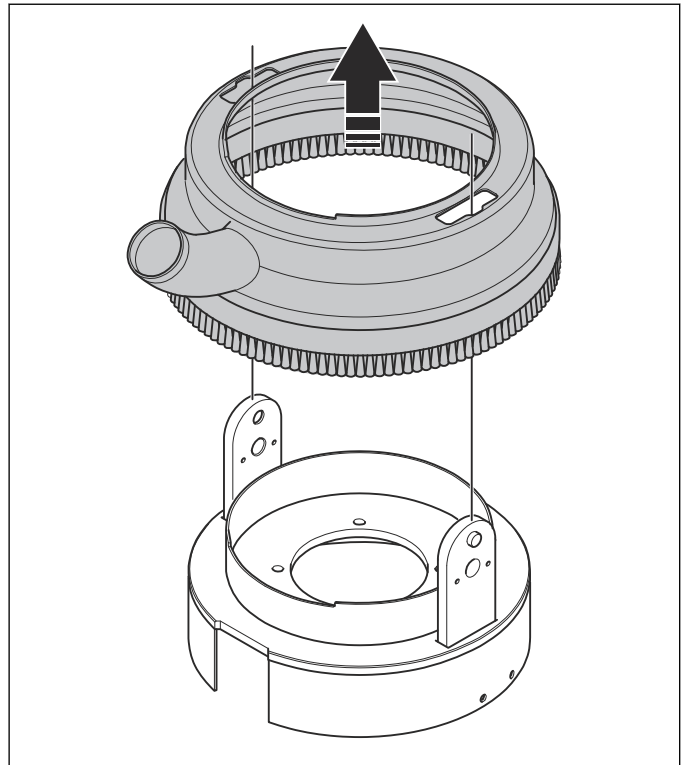
6. Remove the dust cover and the spacer.



7. Remove the spring pins in the grinding head bracket.



8. Remove the dust cover from the motor bracket.



6.2.2 To assemble the grinding head and the motor

- When you assemble the grinding head and the motor, use Thread lock medium and tighten the screws, refer to *Servicing tools on page 7*.

7 Troubleshooting

7.1 Function tests

The function tests show the condition of the electrical system, the motor and the grinding head.

7.2 To do a function test of the grinding head

1. Put the product down to get access to the grinding disc.
2. Rotate the grinding disc by hand. Make sure it can move freely and stable without friction and noise.
3. Examine the brush strip.
4. Examine all parts of the vibration damping system.
5. Examine the tool holder for wear.
6. Tighten the screws.
7. Put the product back to it's upright position.

7.3 To do a function test of the electrical system

1. Put the product in upright position.
2. Examine the external cable, plug and connectors.

7.4 To do a function test of the motor

1. Remove the tools from the tool holder.
2. Push the handle down to slightly lift the tool holder from the surface.

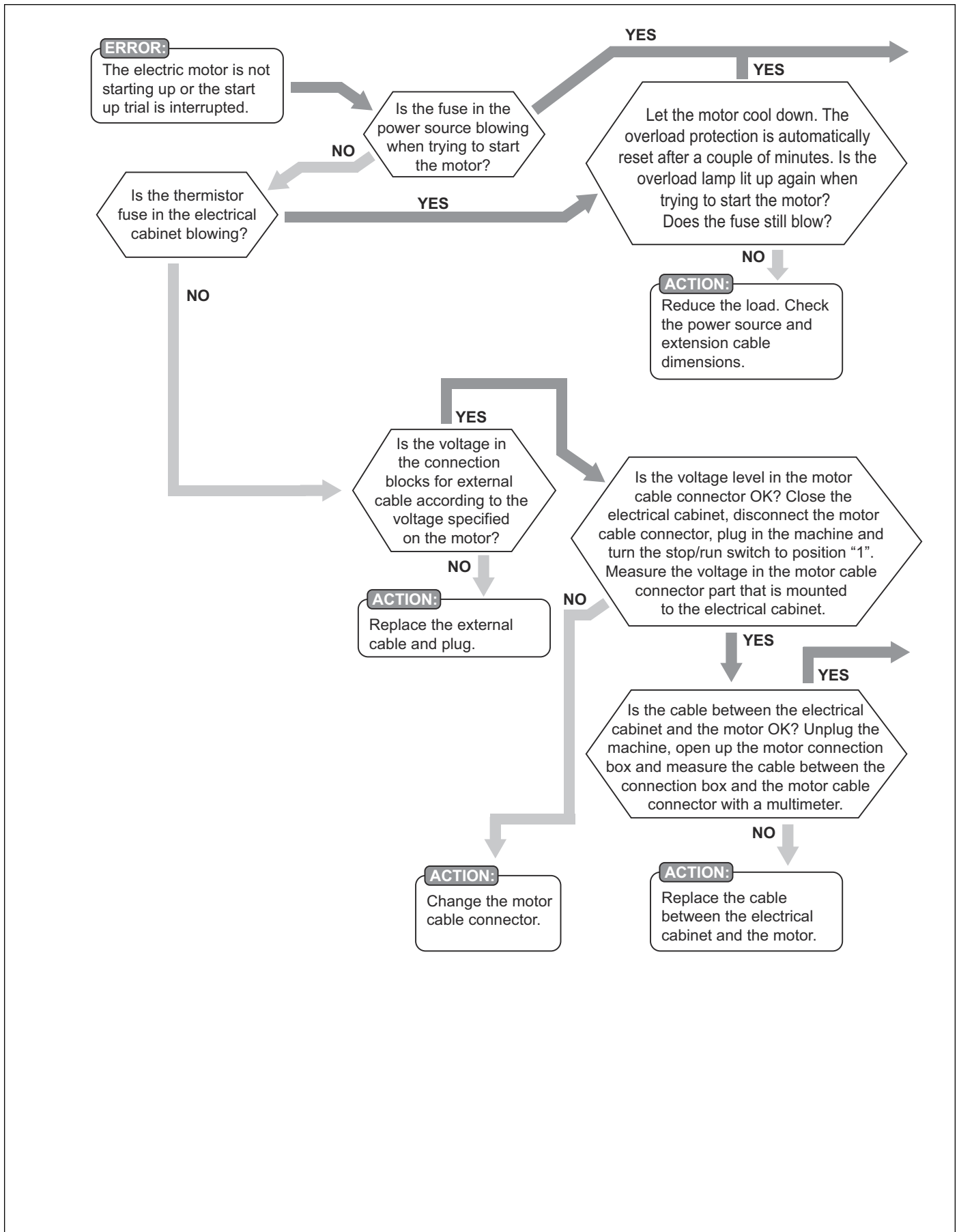
3. Start the motor with the start/stop switch. The motor must then be at its operation speed in less than 5 seconds.
4. Examine the product for noise and vibrations while the motor operates.
5. Let the motor operate for approximately 1 minute.
6. Push the stop button.

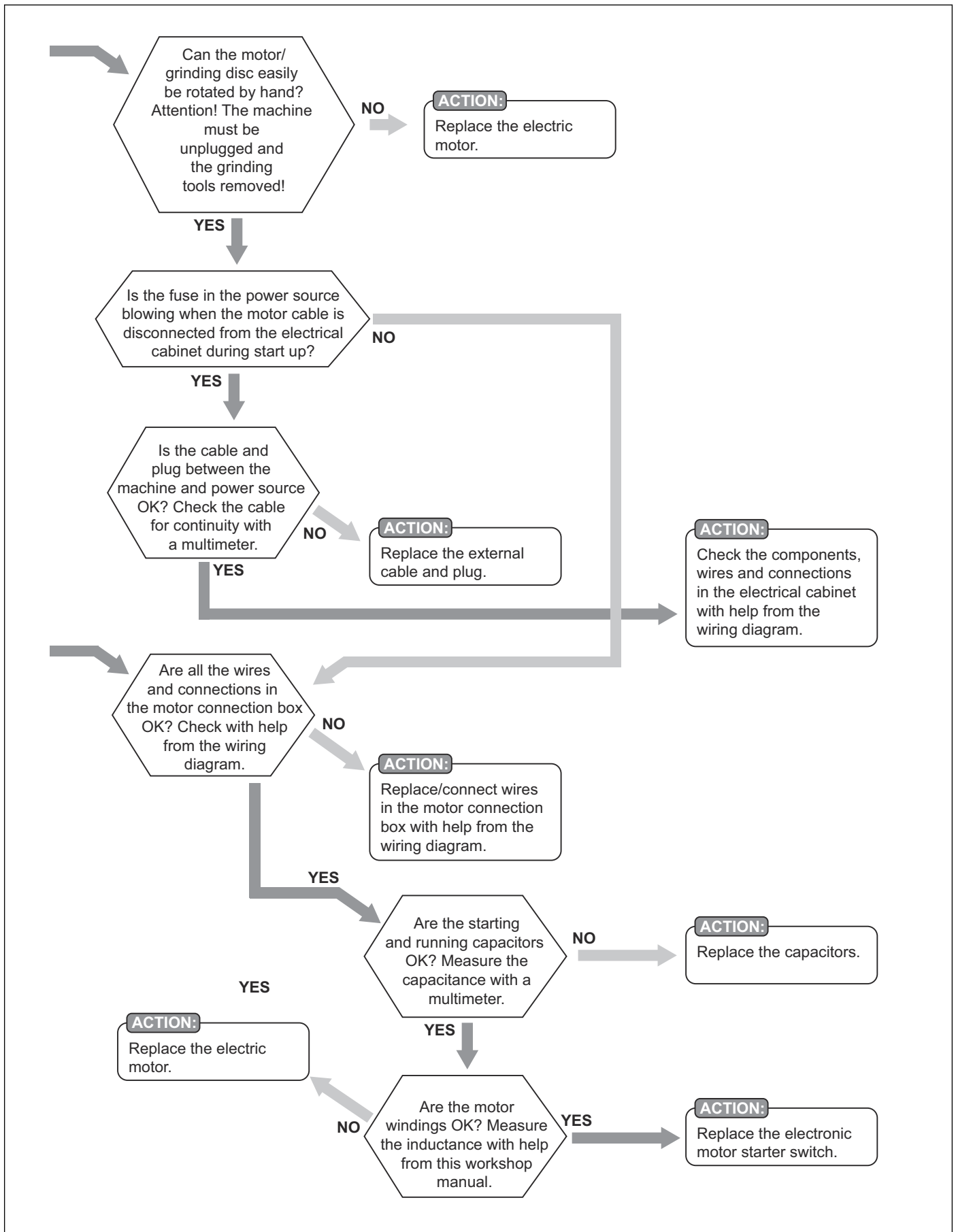
7.5 Before you do the troubleshooting

Before you do the troubleshooting, do the checks that follow.

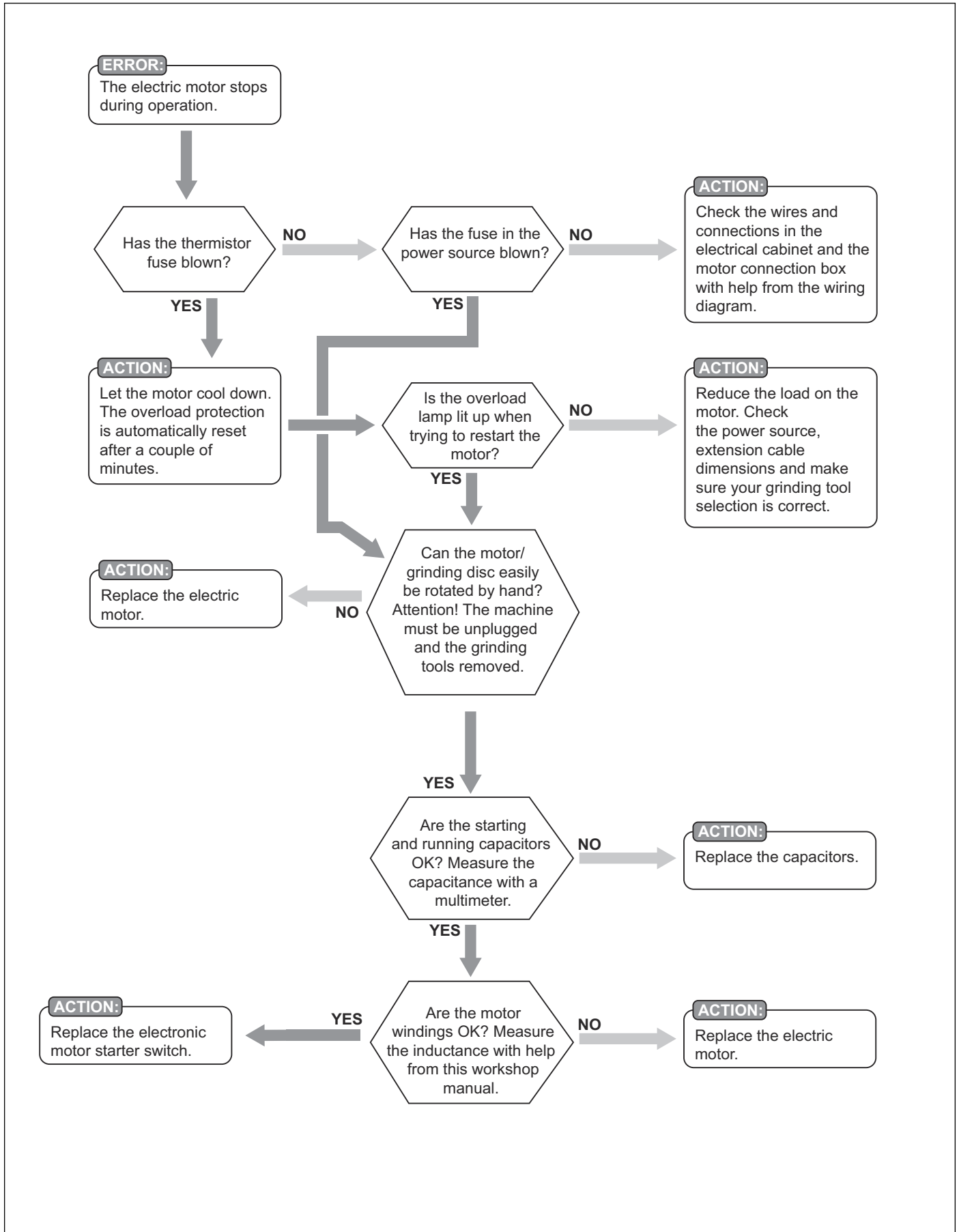
- The grinding head is slightly lifted from the surface when the handle is pushed down.
- The power source has the correct voltage and fuse rated value.
- The extensions cables are in good condition. They are not too long and the gauge is as specified.
- The power plug and connectors between the electrical enclosure and the motor are in good condition.
- All wires in the electrical enclosure and in the motor connection box are correctly connected.

7.6 The motor does not start



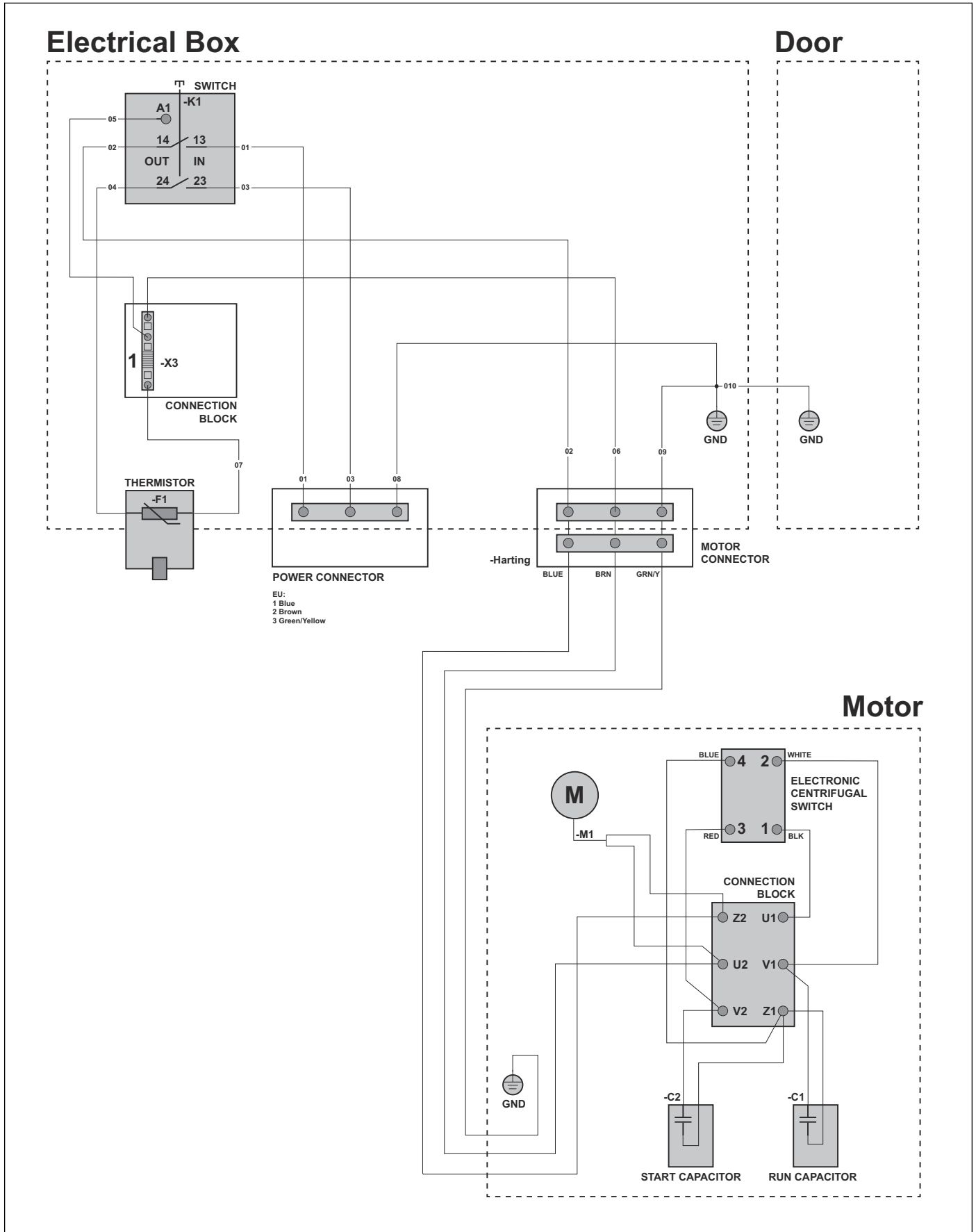


7.7 The motor stops



8 Diagrams

8.1 Wiring diagram



9 Technical data

9.1 Electrical specifications

Motor p/n	Cert.	Voltage (V)	Frequency (Hz)	Power (kW)	Phases	Poles	Flange size	R. Capacitor $\mu\text{F}/\text{VA}$	S. Capacitor $\mu\text{F}/\text{VA}$
597048201	CE	220	50	2.2	1	4	B14	40/450	150/250
597048202	CE	230	60	2.2	1	4	B14	40/450	200/250



www.husqvarna.com

2019-04-23