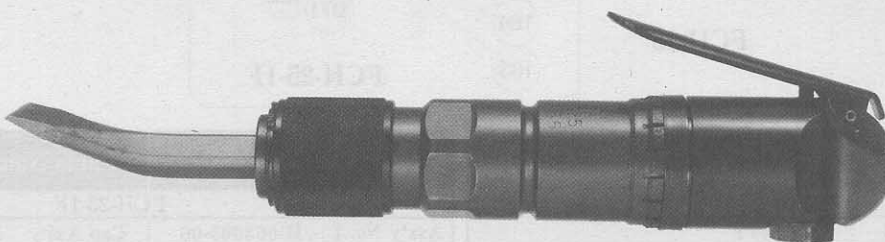




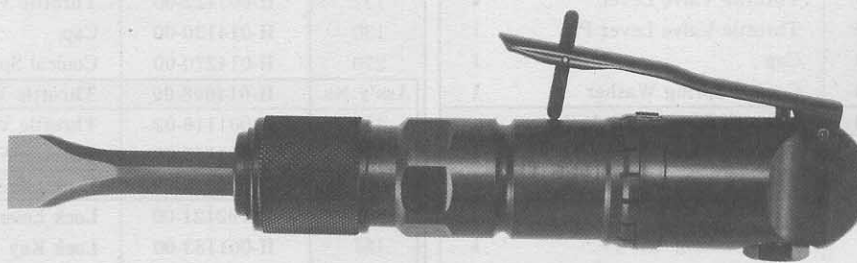
USER MANUAL

FLUX CHIPPERS

MODELS : FCH-25, -25-1F



FCH-25



FCH-25-1F

SPECIFICATIONS

Model	Blows	Piston Diameter		Stroke		Overall Length		Mass		Air Consumption (At Load)		Air Inlet Thread Size	Air Hose Size	
	Hz	mm	in	mm	in	mm	in	kg	lb	m ³ /min	ft ³ /min	in	mm	in
FCH-25	60	25	1	20	25/32	204	8 1/32	1.5	3.3	0.18	6.4	PT or NPT 1/4	9.5	3/8
FCH-25-1F	60	25	1	20	25/32	204	8 1/32	1.5	3.3	0.18	6.4	PT or NPT 1/4	9.5	3/8

The performance figures are at 0.63MPa(6.3bar).

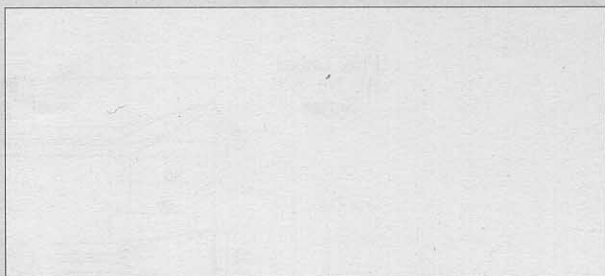
! Refer to "The Instructions and Warning for Safety Use" enclosed in each tool box.

FUJI AIR TOOLS CO., LTD.

2-1-14 Kamiji, Higashinari-ku, Osaka, 537-0003 Japan

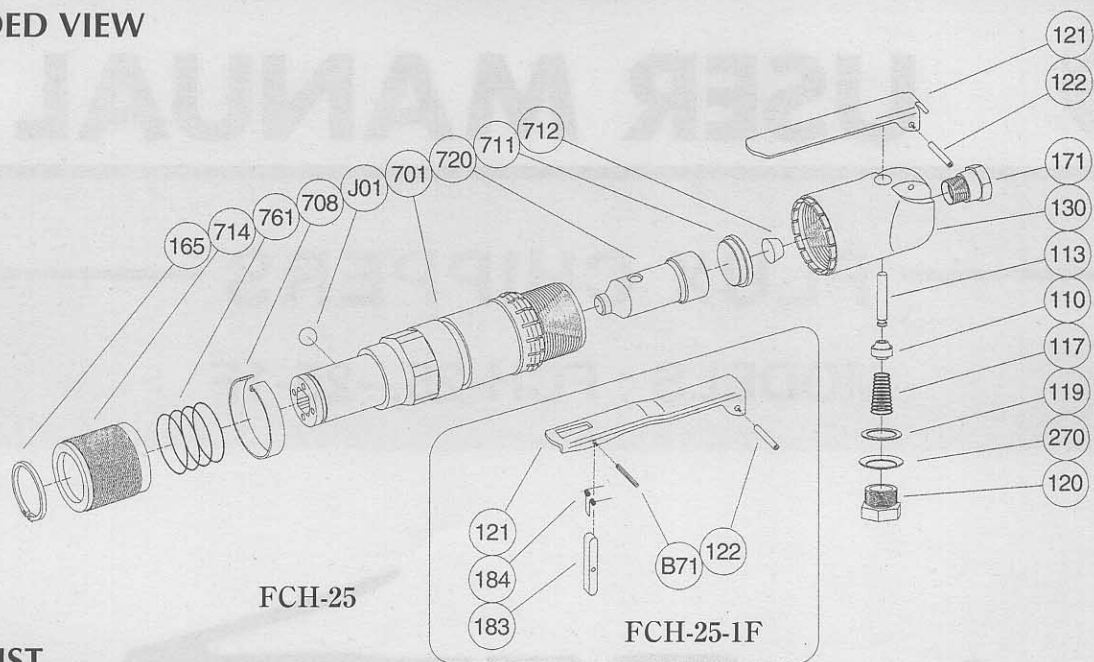
Tel : (06) 6972-2335

Fax : (06) 6972-2250



PARTS LIST MODEL: FCH-25, -25-1F

EXPLODED VIEW



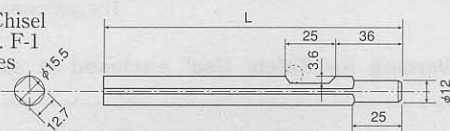
PARTS LIST

Index No.	Parts No.	Parts Name	Qt.	Index No.	Parts No.	Parts Name	Qt.
FCH-25				FCH-25-1F			
Ass'y No.	H-063005-05	Cap Ass'y		Ass'y No.	H-063005-06	Cap Ass'y	
117	D-001117-00	Throttle Valve Spring	1	117	D-001117-00	Throttle Valve Spring	1
119	H-014119-00	T.V. Cover Packing	1	119	H-014119-00	T.V. Cover Packing	1
120	H-014120-00	Throttle Valve Cover	1	120	H-014120-00	Throttle Valve Cover	1
121	H-063121-00	Throttle Valve Lever	1	122	H-001122-00	Throttle Valve Lever Pin	1
122	H-001122-00	Throttle Valve Lever Pin	1	130	H-014130-00	Cap	1
130	H-014130-00	Cap	1	270	H-014270-00	Conical Spring Washer	1
270	H-014270-00	Conical Spring Washer	1	Ass'y No.	H-014008-00	Throttle Valve Rod Ass'y	
Ass'y No.	H-063008-00	Throttle Valve Rod Ass'y		110	H-001110-02	Throttle Valve	1
110	H-001110-02	Throttle Valve	1	113	H-014113-00	Throttle Valve Rod	1
113	H-063113-00	Throttle Valve Rod	1	Ass'y No.	H-001019-00	Lock Lever Ass'y	
165	H-056165-00	Stop Ring	1	121	A-192121-00	Lock Lever	1
171	IB-202N01	Inlet Bushing (NPT)	1	183	H-001183-00	Lock Key	1
701	H-056701-01	Cylinder	1	184	G-144184-00	Lock Spring	1
708	H-014708-00	Locking Clutch	1	B71	SP-218	Spring Pin	1
711	H-014711-00	Cylinder Cover	1	165	H-056165-00	Stop Ring	1
712	H-001712-00	Damper	1	171	IB-202N01	Inlet Bushing (NPT)	1
714	H-056714-00	Chisel Holder	1	701	H-056701-01	Cylinder	1
720	H-014720-00	Piston	1	708	H-014708-00	Locking Clutch	1
761	H-014761-00	Retainer Spring	1	711	H-014711-00	Cylinder Cover	1
J01	B-3/8	Ball	1	712	H-001712-00	Damper	1
				714	H-056714-00	Chisel Holder	1
				720	H-014720-00	Piston	1
				761	H-014761-00	Retainer Spring	1
				J01	B-3/8	Ball	1

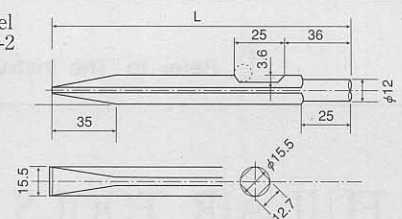
- Ass'y No. denotes no. of the assembled parts comprising of more than 1 pc. of parts. The related parts are shown in the thick frame.
- Index No.171 is unnecessary in PT type.
- Specify parts number and quantity in ordering.
- Standard Accessories : F-3-2.....155mm Flux Chisel 1.

CHISELS

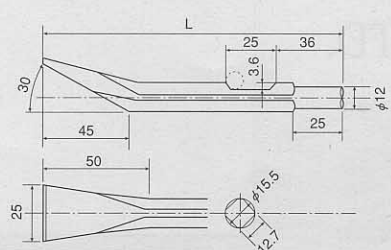
Blank Chisel
AC No. F-1
Series



Flat Chisel
AC No. F-2
Series



Flux Chisel
AC No. F-3
Series



CHISELS LIST

	AC No.			Length (L) mm
	Blank	Flat	Flux	
F-1-1				140
F-1-2	F-2-2	F-3-2		155
F-1-3	F-2-3	F-3-3		200
F-1-4	F-2-4	F-3-4		250
F-1-5	F-2-5	F-3-5		300