

(1) EC-Type Examination Certificate

(2) Council Directive of 21 December 1989 on the approximation of the laws of the member states relating to personal protective equipment - 89/686/EEC

(3) No. of EC-Type Examination Certificate: **ZP/B037/14**

(4) Product: **Anchor device type C**
Type: **Batiligne**

(5) Manufacturer: **Vertic France**

(6) Address: **691 Chemin des Fontaines, 38190 Bernin, France**

(7) The design and construction of this personal protective equipment and any acceptable variation thereto are specified in the schedule to this type examination certificate.

(8) The certification body of DEKRA EXAM GmbH, Notified Body No. 0158 according to Article 9 of Council Directive 89/686/EEC of 21 December 1989, certifies that this personal protective equipment has been found to comply with the Essential Health and Safety Requirements given in Annex II to the Directive. The examination and test results are recorded in the test and assessment report PB 13-223.

(9) The Essential Health and Safety Requirements are assured by compliance with

DIN EN 795:2012

DIN CEN/TS 16415:2013

(10) This EC-Type Examination Certificate relates only to the design, examination and tests of the specified personal protective equipment in accordance to Directive 89/686/EEC. Further requirements of the Directive apply to the manufacturing process and supply of this personal protective equipment. These are not covered by this certificate.

(11) When applying the CE Marking to the products that conform to the types examined, the client is obliged to add, in accordance with the attached pattern, the identification number of the Notified Body engaged in production control.

(12) This EC-Type Examination certificate is valid until 2019-03-18.

DEKRA EXAM GmbH
Bochum, 2014-03-19

signed: Wiegand
Certification body

signed: Mühlenbruch
Special services unit

We confirm the correctness of the translation from the German original. In the case of arbitration only the German wording shall be valid and binding.


Certification body


Special services unit

- (13) Appendix to
- (14) **EC-Type Examination Certificate**
ZP/B037/14
- (15) 15.1 Subject and Type
Anchor device type C
Type: Batiligne

15.2 Description

The anchor device type: Batiligne (figure 1) serves the temporary protection of not more than five persons against fall from a height. A wire rope type Cl8 (\varnothing 8 mm – 7 x 7) (figure 2) of corrosion-resistant steel is used as anchor line.

The user can attach his personal fall protection equipment to that anchor line by using a connector according to EN 362. One ending of the anchor line can be equipped with a rope clamp type: BA.EXT2 (figure 3).

The anchor line is placed directly to the building structure with end anchors, type: T (figure 4) resp. type: PEX-AFX (figure 6) or using additional end or intermediate anchors, type: ALTIFIX (Figure 5). The distance between two anchors must not exceed 15 m. The anchor point type: PEX-AFX (figure 6) can be used directly or as an attachment for an end anchor. Moreover, it is possible to place the anchor line to the fronts of a building by using a suitable adapter (figures 8-9). The anchor line guide for the intermediate anchor type: BA.INT2 (figure 7) can also be installed directly or on an intermediate anchor.

The device is installed horizontally to the building structure by means of the provided fastening elements on surfaces of sufficient strength.

Mounted at one end of the anchor line is an energy absorber type: ABS55 (figure 10). Attached to the other end is a rope tensioning device type: BA.TSL2-50 (figure 12) or type: BA.TSL3-50 (figure 13). To bypass the corners of buildings, an anchor line reverse roller type: BA.ANG (figure 14) can be installed.

The anchor device can be loaded in all directions.

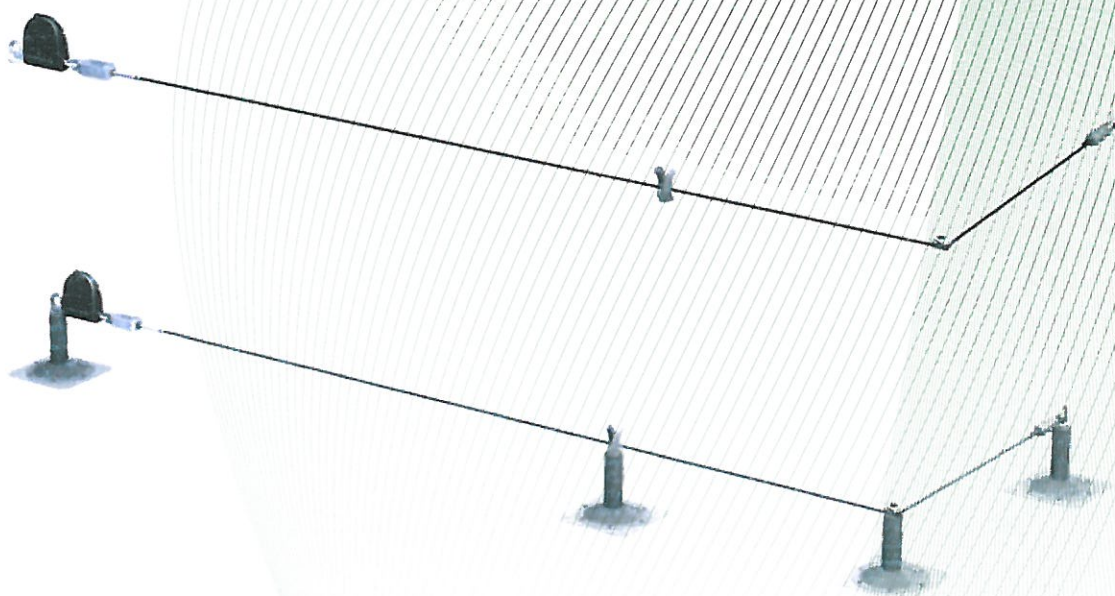


Figure 1: Illustration of sample applications of the anchor device type: Batiligne



Figure 2: Anchor line type: CI8



Figure 3: Rope clamp type: BA.EXT2

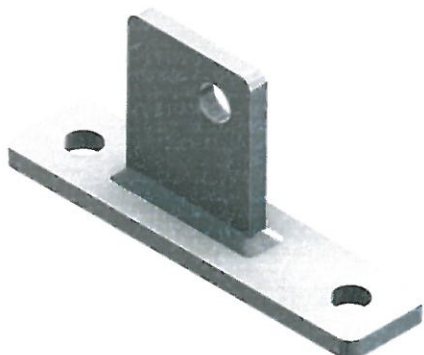


Figure 4: End anchor type: T

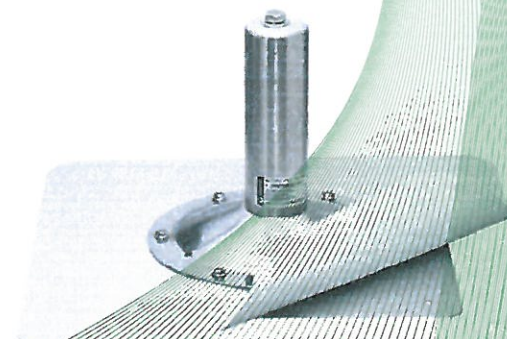


Figure 5: End/intermediate anchor type: ALTIFIX



Figure 6: End anchor type: PEX-AFX



Figure 7: Anchor line guide for intermediate anchor type: BA.INT2

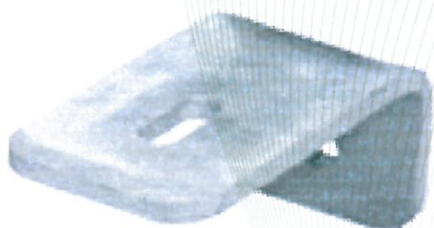


Figure 8: Adapter for fronts type: R.EQG



Figure 9: Adapter for front corners type: BA.ANGSA



Figure 10: Energy absorber type: ABS55

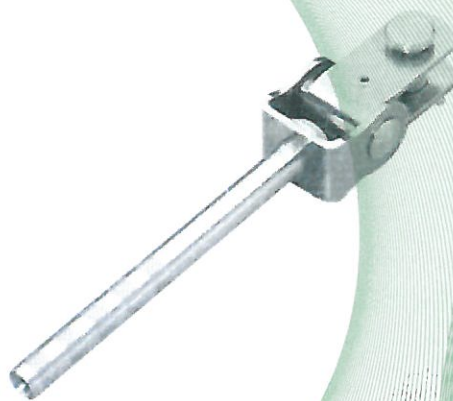


Figure 11: Universal joint yoke
type: ES-2

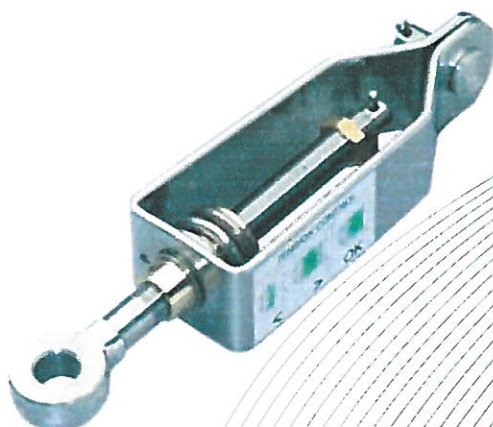


Figure 12: Rope tensioning device
type: BA.TSL2-50

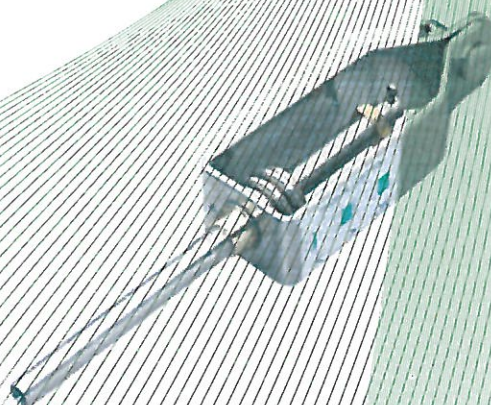


Figure 13: Rope tensioning device
type: BA.TSL3-50

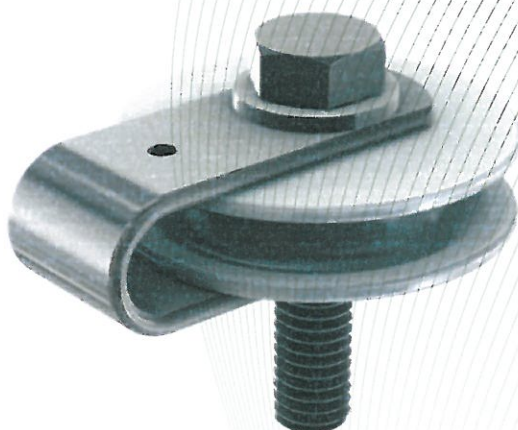


Figure 14: Anchor line reverse roller
type: BA.ANG

(16) Test and Assessment Report

PB 13-223, 2014-03-11