



Justrite Safety Group

# 526G Sani-Flex™

Specially designed for the lab industry



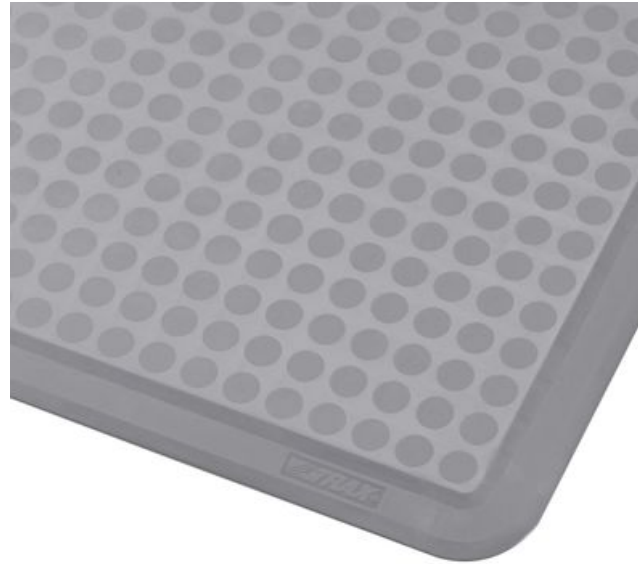
notrax.eu

Fisherbrand  
100%  
PURE  
GLASS

# 526G Sani-Flex™

## Ergonomic, Anti-fatigue & Safety Matting - Dry Areas Standalone Matting

Specially designed for the lab industry, Sani-Flex™ anti-fatigue matting provides the optimum combination of comfort, anti-slip surface, quality and durability, and chemical resistance. Its smooth surface and rounded off edges make it easy to clean.



- Closed anti-slip gritted structure surface
- Superb anti-fatigue properties due to its unique design underneath
- Heavy duty 100% nitrile rubber compound, designed to yield a long service life

- Dry Areas
- For use in various laboratory settings, including research laboratories, testing facilities, and medical laboratories, to enhance comfort and productivity at standing workstations, with high chemical resistance for incidental exposure.
- Medium duty

Recommended use



# Ergonomic, Anti-fatigue & Safety Matting - Dry Areas Standalone Matting Sani-Flex™

## General

Brand	Notrax
Category	Dry Areas Standalone Matting
Product Number	526G
Product Family	Industrial & Commercial Matting
Product Group	Ergonomic, Anti-fatigue & Safety Matting
Industry	Laboratories
Product Name	Sani-Flex™
Recommended use	For use in various laboratory settings, including research laboratories, testing facilities, and medical laboratories, to enhance comfort and productivity at standing workstations, with high chemical resistance for incidental exposure.
Series	Sani-Flex™
Shipping Location	Achterzeedijk 57, Unit 15, Barendrecht 2992SB, The Netherlands
Type	Dry Areas - Heavy Duty Nitrile Mats
Update trigger	20210310-1301
Usage Intensity	Medium duty

## Sustainability

REACH	Reach compliant (Registration, Evaluation, Authorization and Restriction of Chemicals).
Recycled	True
Warranty (years)	1

## Tests

Surface Flammability	Pass
----------------------	------

## Technical Specifications

Application	Industrial Environments
Edges	Moulded bevelled edges on all sides
Material	100% Nitrile rubber
Material Group	Nitrile rubber
Process	Compression Moulding

# Sani-Flex™ Grey

Art. nr.	Dimension (cm)	Weight (kg)	Thickness (mm)
526S1824GY	46cm x 61cm	3.1	12.7
526S0023GY	61cm x 91cm	6.05	12.7