



# Guard Dog<sup>®</sup> 5 Channel

Guard Dog<sup>®</sup> 5 Channel

## Cable Protection - Guard Dog® 5 Channel

Guard Dog 5-channel cable protector with hinged lid provides a safer crossing for vehicle and pedestrian traffic while protecting valuable electrical cables from damage. Its modular interlocking design allows you to extend to any length.

- Features a load capacity of 9,526 kg /Axle

### Colors:

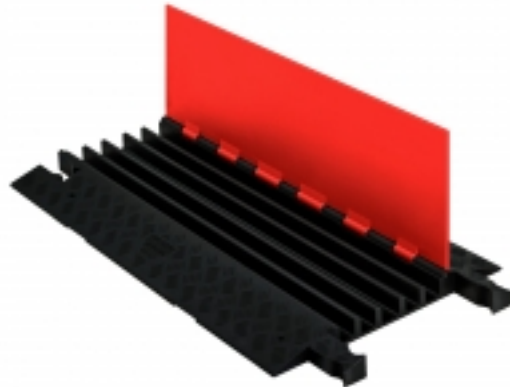
- Black/Orange

### Sizes:

- 50cm x 91cm

### Accessories:

- Guard Dog® 5 Channel End Caps

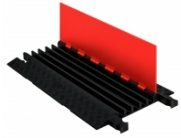


# Cable Protection - Guard Dog® 5 Channel

## General

Brand	Checkers
Product Number	PGD5
Product Family	Cable & Hose Protection
Product Group	Cable Protection
Product Name	Guard Dog® 5 Channel
Shipping Location	Barendrecht 2992SB, NL
Update trigger	20210310-1301

# Guard Dog® 5 Channel - Orange/Black



PGDS0007OB  
GD5X125-O/B

Art. nr.	Length (cm)	Width (cm)		Weight in kg
PGDS0007OB	91	50	3.4	9.6

## Accessories

Guard Dog® 5 Channel  
End Caps