

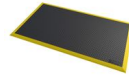
# 548 Diamond Flex™ ESD

Diamond plate static dissipative workstation mat



# Ergonomic, Anti-fatigue & Safety Matting - Dry Areas Standalone Matting 548 Diamond Flex™ ESD

The 18.4 mm thick platform elevates and insulates the worker from the hard ground while the bulleted domes underneath allow the mat to bend and 'flex' with every movement.



- Static dissipative rubber compound
- Standard size mats for individual workstations
- Loose lay and require no installation
- Highly visible yellow safety ramps included on all sides to prevent tripping

## Recommended use

- Dry Areas
- For placement in manufacturing plants, assembly lines, picking, packing and logistics warehouses, individual work stations.
- Heavy duty

## Colors:

- Black
- Black/Yellow

## Sizes:

- 102 cm x 163 cm
- 102cm x 163cm
- 97 cm x 163 cm

SLIP RESISTANCE



# Ergonomic, Anti-fatigue & Safety Matting - Dry Areas Standalone Matting Diamond Flex™ ESD

## General

Brand	Notrax
Category	Dry Areas Standalone Matting
Product Number	548
Product Family	Industrial & Commercial Matting
Product Group	Ergonomic, Anti-fatigue & Safety Matting
Product Name	Diamond Flex™ ESD
Recommended use	For placement in manufacturing plants, assembly lines, picking, packing and logistics warehouses, individual work stations.
Series	Diamond Flex™
Shipping Location	Achterzeedijk 57, Unit 15, Barendrecht 2992SB, The Netherlands
Type	Dry Areas - Heavy Duty Industrial
Update trigger	20210310-1301
Usage Intensity	Heavy duty

## Sustainability

REACH	Reach compliant (Registration, Evaluation, Authorization and Restriction of Chemicals).
Recycled	True
Sustainability	Recyclable material
Warranty	1

## Tests

ESD Rg	Rg $10^6 - 10^9 \Omega$
ESD Rp	Rp $10^6 - 10^9 \Omega$
Fire rating US	Pass
Surface Flammability	Pass

## Technical Specifications

Application	Industrial Environments
Edges	Bevelled edges on all sides
Material	Static dissipative natural rubber
Material Group	Rubber
Process	Compression Moulding

## Diamond Flex™ ESD Black/Yellow

Art. nr.	Dimension (cm)	Weight (kg)	Thickness (mm)
548S3864BY	97 cm x 163 cm	21.36	18.4
548S4064BY	102cm x 163cm		

## Diamond Flex™ ESD Black

Art. nr.	Dimension (cm)	Weight (kg)
548S3864BL	97 cm x 163 cm	20.3
548S4064BL	102 cm x 163 cm	21.3