



# Trusted in Motion. Grounded in Safety.

The Ultimate Protection Against \$50k+ Costly Mishaps



**Safe and efficient  
jobsite access in any  
weather or soil condition.**



**Meets any job  
requirement, from  
20 tons up to 120 tons.**



**Widest range of mats  
for your application  
and operating conditions.**







## MATERIAL COMPETITIVE ANALYSIS CHART:

	Checkers HDPE Mats	Plywood	Metal
Recyclable	✓	✓*	✓
Long Lifecycle	✓	✗	✓
Chemically Inert	✓	✗	✓
Impervious to Water Absorption	✓	✗	✓
Consistent Strength/Performance	✓	✗	✗
Flexible Construction	✓	✗	✗
Traction	✓	✗	✗
Lightweight	✓	✗	✗
Versatile Offering to Fit Application Needs	✓	✗	✗

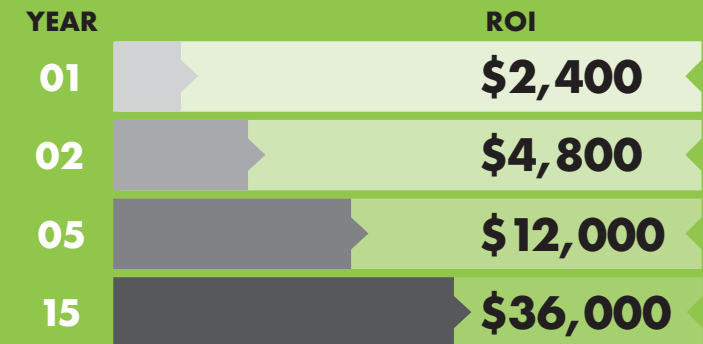
\*If clean and uncontaminated

ALTURNAMATS  
CAN PROVIDE A  
**91% ROI**  
IN JUST  
1 YEAR

ALTURNAMATS  
CAN PROVIDE A  
**100% ROI**  
IN JUST  
15 MONTHS

## ROI by Using AlturnaMAT

Approximate cost of replacing  
12 sheets of plywood 4 times per year.





## GROUND PROTECTION

Checkers' ground protection mats offer superior durability and anti-sinking properties, reducing the risk of equipment immobilization and potential business delays.

- Handle heavier loads and avoid downtime or delays by not getting stuck in challenging terrain.
- Guarantee optimal load capacity for your equipment with precision and efficiency.
- Flexibility to adapt to uneven and undulating terrains.

## SAFE JOBSITE ACCESS

Checkers' innovative design not only improves safety but also creates a more secure work environment.

- Designed with diamond plate tread patterns and micro traction to enhance grip performance.
- Effortlessly deploy, connect, clean, and store with our user-friendly system, minimizing the potential for accidents and injuries.
- Meticulously crafted to withstand the rigors of everyday use while still being flexible enough to adapt to changing conditions.

## ENVIRONMENTALLY FRIENDLY

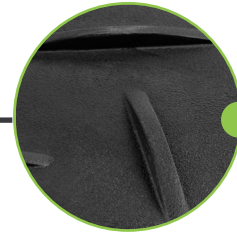
Checkers mats durability mitigates the risk of significant financial penalties from damage to sensitive sites.

- Significant return on investment in just 15 months due to their long lifespan.
- Prevent ground compaction and damage with even weight distribution.
- Constructed from 100% recycled high-density polyethylene, helps reduce its carbon footprint.

**Optional Hand Holes for Easy Maneuverability**



Turn-A-Link



AlturnaGRIP  
Micro-Traction

**Contours to Different Ground  
Conditions Due to its Flexible Design**

## FEATURES & BENEFITS

### **Diminish Instances of Slips, Falls and Occupation Accidents**

**Maximize Safety & Stability:**

AlturnaGRIP Micro-Traction & Unique Turn-A-Links offer unmatched grip and ground coverage.

### **Reduce Nicks, Cuts, Scratches and Splinters**

**Simplify Installation:**

Easy to deploy, ergonomic hand hole orientation.

### **Minimize Risk of Equipment Immobilization**

**Optimal Mix of Weight Dispersion & Flexibility:**

Engineered to tackle up to 120 tons with ease.



# INDUSTRIES



**Heavy Industrial/Construction**  
TTXL



**Industrial/Commercial Construction**  
AlturMATs · VersaMAT



**Drilling**  
AlturMATs



**Rental**  
AlturMATs



**Residential Contracting**  
Water, Gas, Electricity, Powerline, Landscaping

VersaMAT · MambaMAT



**Institutional**  
Universities, Hospitals, Cemeteries, Golf Courses

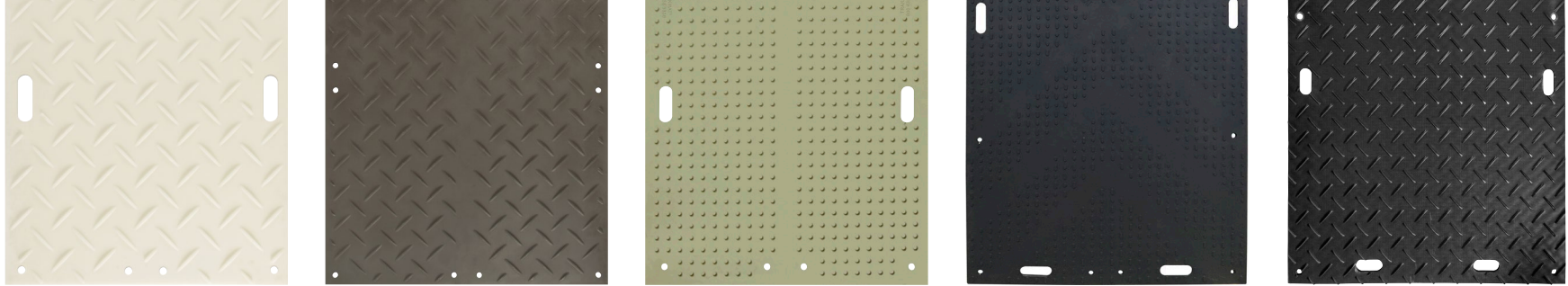
TrakMAT · LibertyMAT



**Entertainment**  
Tradeshows, Fairs, Marathons, Special Events  
(Concerts, Speaking, Temporary Parking)

LibertyMAT · MambaMAT





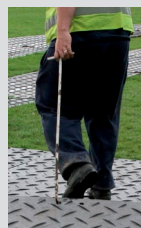
## Ground Protection Chart

	TTXL / TTXL+	AlturnaMATS	VersaMAT	TrakMAT	LibertyMAT	MambaMAT
<b>Cost</b>	\$\$\$\$	\$\$\$	\$\$\$	\$\$	\$\$	\$
<b>Grade</b>	Heavy Duty	Medium Duty	Medium Duty	Medium Duty	Medium Duty	Medium Duty
<b>Durability</b>						
<b>Load Bearing Capacity</b>	165 tons	120 tons	120 tons	100 tons	100 tons	95 tons
<b>Surface Tread</b>	 Low Profile/Chevron	 Diamond Cleat/Diamond Cleat or Diamond Cleat/Smooth	 Flat Oval/Diamond Cleat or Flat Oval/Smooth	 Power Cylinder/Power Cylinder or Power Cylinder/Smooth	 Chevron/Chevron	 Diamond Cleat/Low Profile 4-Bar/Smooth
<b>AlturnaGRIP Micro-Traction</b>						
<b>Mat Weight</b>	794 lbs (360.650 kg)	86 lbs - 4 x 8 ft (39.916 kg - 121.92 x 243.84 mm)	86 lbs - 4 x 8 ft (39.916 kg - 121.92 x 243.84 mm)	78 lbs - 4 x 8 ft (35.38 kg - 121.92 x 243.84 mm)	77 lbs - 4 x 8 ft (34.92 kg - 121.92 x 243.84 mm)	88 lbs - 4x8 ft (39.91 kg - 121.92 x 243.84 mm)
<b>Available Sizes</b>	13 ft 5 in x 6 ft 8 in (4.0894 x 2.032 mm)	2 x 4 ft (60.96 x 121.92 mm) 2 x 6 ft (60.96 x 182.88 mm) 2 x 8 ft (60.96 x 243.84 mm) 3 x 6 ft (91.44 x 182.88 mm) 3 x 8 ft (91.44 x 243.84 mm) 4 x 8 ft (121.92 x 243.84 mm)	2 x 8 ft (60.96 x 243.84 mm) 3 x 8 ft (91.44 x 243.84 mm) 4 x 8 ft (121.92 x 243.84 mm)	22 in x 8 ft (55.88 x 243.84 mm) 3 x 8 ft (91.44 x 243.84 mm) 44 in x 8 ft (111.76 x 243.84 mm)	4 x 8 ft (121.92 x 243.84 mm)	2 x 8 ft (60.96 x 243.84 mm) 3 x 6 ft (91.44 x 182.88 mm) 3 x 8 ft (91.44 x 243.84 mm) 4 x 8 ft (121.92 x 243.84 mm)
<b>Available Colors</b>	 Black	 Black or Natural	 Black or Natural	 Black or Translucent Cool Green	 Black	 Black or Natural
<b>Warranty</b>	*6-Year Limited Warranty (to be evaluated by laboratory analysis)	Limited Lifetime	Limited Lifetime	6-Year Limited Warranty	6-Year Limited Warranty	6-Year Limited Warranty

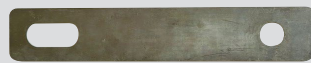
\*Use of steel tracked vehicles will result in accelerated wear

## Accessories

Our ground protection accessories complement our line of ground protection mats, offering a comprehensive solution for creating temporary roadways and working platforms for heavy vehicles.



Ergonomic Handi Hook



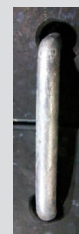
TTXLSCONN \*only used with TTXL Mats



Two-Way Urethane Connector



Single Flat Link



Single Round Link



Four-Way Urethane Connector



Double Flat Link



Double Round Link



Get the Latest Updates  
and Offers on Products  
from Checkers

# Trusted in Motion. Grounded in Safety.

(800) 438-9336 • [insidesales@checkers-safety.com](mailto:insidesales@checkers-safety.com) • [Checkers-Safety.com](http://Checkers-Safety.com)

Proudly Offered By:



Justrite Safety Group is a leading global manufacturer and supplier of a deep portfolio of complementary mission-critical safety products which simplify workplace safety and regulatory compliance to protect lives, assets, and the environment.



Temporary, off-site and transportation-based worksites pose unique safety and compliance challenges. We continually expand our range of portable, durable, and self-contained products to address these challenges and uphold safety compliance standards. Our jobsite products deliver unique solutions for temporary worksites, weather exposure, and extreme environments.