



Trusted in Motion. Grounded in Safety.

The Ultimate Protection Against \$50k+ Costly Mishaps

**Safe and efficient
jobsite access in any
weather or soil condition.**



**Meets any job
requirement, from
20 tons up to 120 tons.**



**Widest range of mats
for your application
and operating conditions.**





MATERIAL COMPETITIVE ANALYSIS CHART:

	Checkers HDPE Mats	Plywood	Metal
Recyclable	✓	✓*	✓
Long Lifecycle	✓	✗	✓
Chemically Inert	✓	✗	✓
Impervious to Water Absorption	✓	✗	✓
Consistent Strength/Performance	✓	✗	✗
Flexible Construction	✓	✗	✗
Traction	✓	✗	✗
Lightweight	✓	✗	✗
Versatile Offering to Fit Application Needs	✓	✗	✗

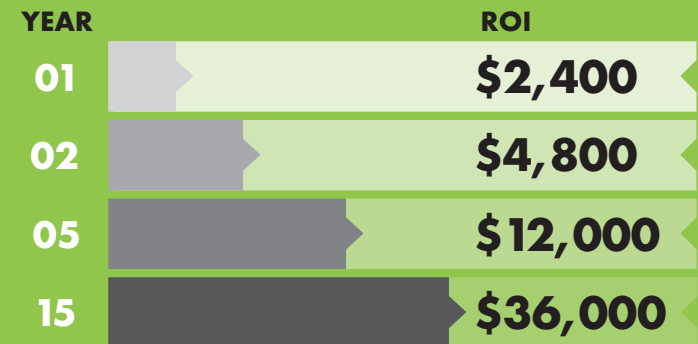
*If clean and uncontaminated

ALTURNAMATS
CAN PROVIDE A
91% ROI
IN JUST
1 YEAR

ALTURNAMATS
CAN PROVIDE A
100% ROI
IN JUST
15 MONTHS

ROI by Using AlturnaMAT

Approximate cost of replacing
12 sheets of plywood 4 times per year.





GROUND PROTECTION

Checkers' ground protection mats offer superior durability and anti-sinking properties, reducing the risk of equipment immobilization and potential business delays.

- Handle heavier loads and avoid downtime or delays by not getting stuck in challenging terrain.
- Guarantee optimal load capacity for your equipment with precision and efficiency.
- Flexibility to adapt to uneven and undulating terrains.

SAFE JOBSITE ACCESS

Checkers' innovative design not only improves safety but also creates a more secure work environment.

- Designed with diamond plate tread patterns and micro traction to enhance grip performance.
- Effortlessly deploy, connect, clean, and store with our user-friendly system, minimizing the potential for accidents and injuries.
- Meticulously crafted to withstand the rigors of everyday use while still being flexible enough to adapt to changing conditions.

ENVIRONMENTALLY FRIENDLY

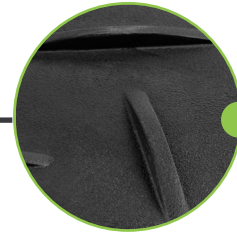
Checkers mats durability mitigates the risk of significant financial penalties from damage to sensitive sites.

- Significant return on investment in just 15 months due to their long lifespan.
- Prevent ground compaction and damage with even weight distribution.
- Constructed from 100% recycled high-density polyethylene, helps reduce its carbon footprint.

Optional Hand Holes for Easy Maneuverability



Turn-A-Link



AlturnaGRIP
Micro-Traction

**Contours to Different Ground
Conditions Due to its Flexible Design**

FEATURES & BENEFITS

Diminish Instances of Slips, Falls and Occupation Accidents

Maximize Safety & Stability:

AlturnaGRIP Micro-Traction & Unique Turn-A-Links offer unmatched grip and ground coverage.

Reduce Nicks, Cuts, Scratches and Splinters

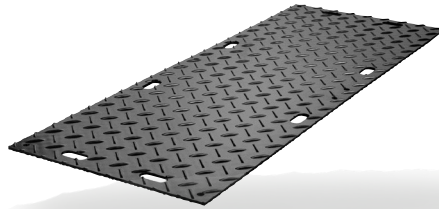
Simplify Installation:

Easy to deploy, ergonomic hand hole orientation.

Minimize Risk of Equipment Immobilization

Optimal Mix of Weight Dispersion & Flexibility:

Engineered to tackle up to 120 tons with ease.



INDUSTRIES



Heavy Industrial/Construction
TTXL



Industrial/Commercial Construction
AlturMATs · VersaMAT



Drilling
AlturMATs



Rental
AlturMATs



Residential Contracting
Water, Gas Electricity, Powerline, Landscaping

VersaMAT · MambaMAT



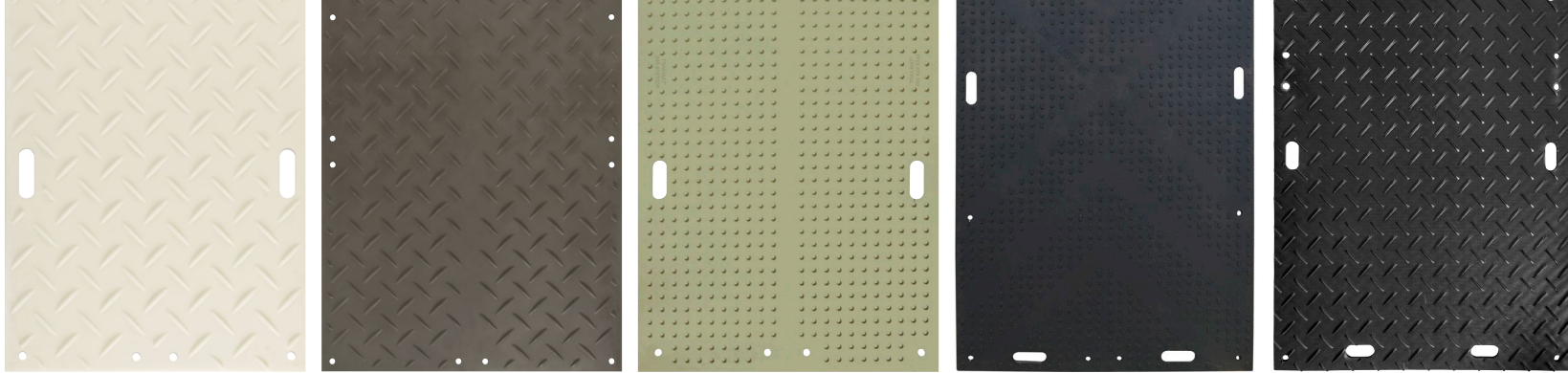
Institutional
Universities, Hospitals, Cemeteries, Golf Courses

TrakMAT · LibertyMAT



Entertainment
Tradeshows, Fairs, Marathons, Special Events
(Concerts, Speaking, Temporary Parking)

LibertyMAT · MambaMAT



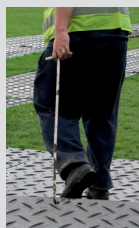
Ground Protection Chart

	TTXL / TTXL+	AlturnaMATS	VersaMAT	TrakMAT	LibertyMAT	MambaMAT
Cost	\$\$\$\$	\$\$\$	\$\$\$	\$\$	\$\$	\$
Grade	Heavy Duty	Medium Duty	Medium Duty	Medium Duty	Medium Duty	Medium Duty
Durability						
Load Bearing Capacity	165 tons	120 tons	120 tons	100 tons	100 tons	95 tons
Surface Tread	 Low Profile/Chevron	 Diamond Cleat/Diamond Cleat or Diamond Cleat/Smooth	 Flat Oval/Diamond Cleat or Flat Oval/Smooth	 Power Cylinder/Power Cylinder or Power Cylinder/Smooth	 Chevron/Chevron	 Diamond Cleat/Low Profile 4-Bar/Smooth
AlturnaGRIP Micro-Traction						
Mat Weight	794 lbs	86 lbs (4x8 ft)	86 lbs (4x8 ft)	78 lbs (4x8 ft)	77 lbs (4x8 ft)	88 lbs (4x8 ft)
Available Sizes	13 ft 5 in x 6 ft 8 in	2x4 ft, 2x6 ft, 2x8 ft, 3x6 ft, 3x8 ft, 4x8 ft	2x8 ft, 3x8 ft, 4x8 ft	22in x 8ft, 3x8 ft, 44in x 8 ft	4x8 ft	2x8 ft, 3x6 ft 3x8 ft, 4x8 ft
Available Colors	 Black	 Black or Natural	 Black or Natural	 Black or Translucent Cool Green	 Black	 Black or Natural
Warranty	*6-Year Limited Warranty (to be evaluated by laboratory analysis)	Limited Lifetime	Limited Lifetime	6-Year Limited Warranty	6-Year Limited Warranty	6-Year Limited Warranty

*Use of steel tracked vehicles will result in accelerated wear

Accessories

Our ground protection accessories complement our line of ground protection mats, offering a comprehensive solution for creating temporary roadways and working platforms for heavy vehicles.



Ergonomic Handi Hook



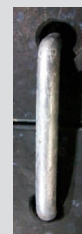
TTXLCONN *only used with TTXL Mats



Two-Way Urethane Connector



Single Flat Link



Single Round Link



Four-Way Urethane Connector



Double Flat Link



Double Round Link



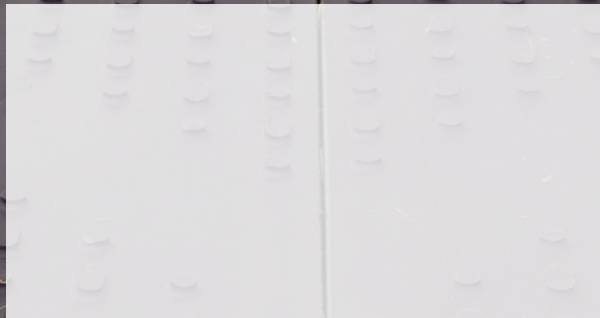
Get the Latest Updates
and Offers on Products
from Checkers



Trusted in Motion. Grounded in Safety.

(800) 798-9250 • Checkers-Safety.com

Proudly Offered By:



*Checkers Safety Group that the best
quality products is made from recycled
material that are 100% recycled.
www.checkers-safety.com*