

**TuffTrak<sup>®</sup>**  
Ground Protection Solutions

# TuffTrak<sup>®</sup> ST

Ultimate solid heavy duty road mat



# Ground Protection Matting - Heavy Duty Ground Protection Matting TuffTrak® ST

TuffTrak® ST is a standard heavy duty ground protection solution specially designed for use as a trackway or workpad providing superior strength and a load bearing capacity of up to 200 tons.\*

- Various connector options available for different ground conditions
- 4 connector points, allowing seamless connection

## Recommended use

- Outdoor
- For use as temporary roadways, pedestrian pathways, work areas for plant and machinery, drilling rigs, depot or storage areas.
- Heavy duty

## Colors:

- Black

## Sizes:

- 2500 x 3000 x 38mm



# Ground Protection Matting - Heavy Duty Ground Protection Matting TuffTrak® ST

## General

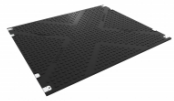
Brand	TuffTrak™
Category	Heavy Duty Ground Protection Matting
Product Number	TTST
Product Family	Ground Protection
Product Group	Ground Protection Matting
Product Name	TuffTrak® ST
Recommended use	For use as temporary roadways, pedestrian pathways, work areas for plant and machinery, drilling rigs, depot or storage areas.
Shipping Location	Barendrecht 2992SB, NL
Update trigger	20210310-1301
Usage Intensity	Heavy duty

## Sustainability

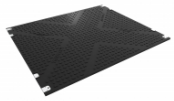
Sustainability	Recyclable material
----------------	---------------------

## Technical Specifications

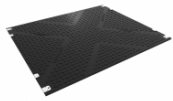
Edges	No borders
Material	High density polyethylene (HDPE)
Material Group	HDPE
Process	Injection Moulding



TMSST05BL  
TTS114



TMSST01BL  
TTS019



TMSST03BL  
TTS040

Art. nr.	Art. Nr. Justrite US Ref (ERP)	Dimension (cm)	Weight (kg)
TMSST05BL	TTS114	2500 x 3000 x 38mm	295
TMSST01BL	TTS019	2500 x 3000 x 38mm	295
TMSST03BL	TTS040	2500 x 3000 x 38mm	295