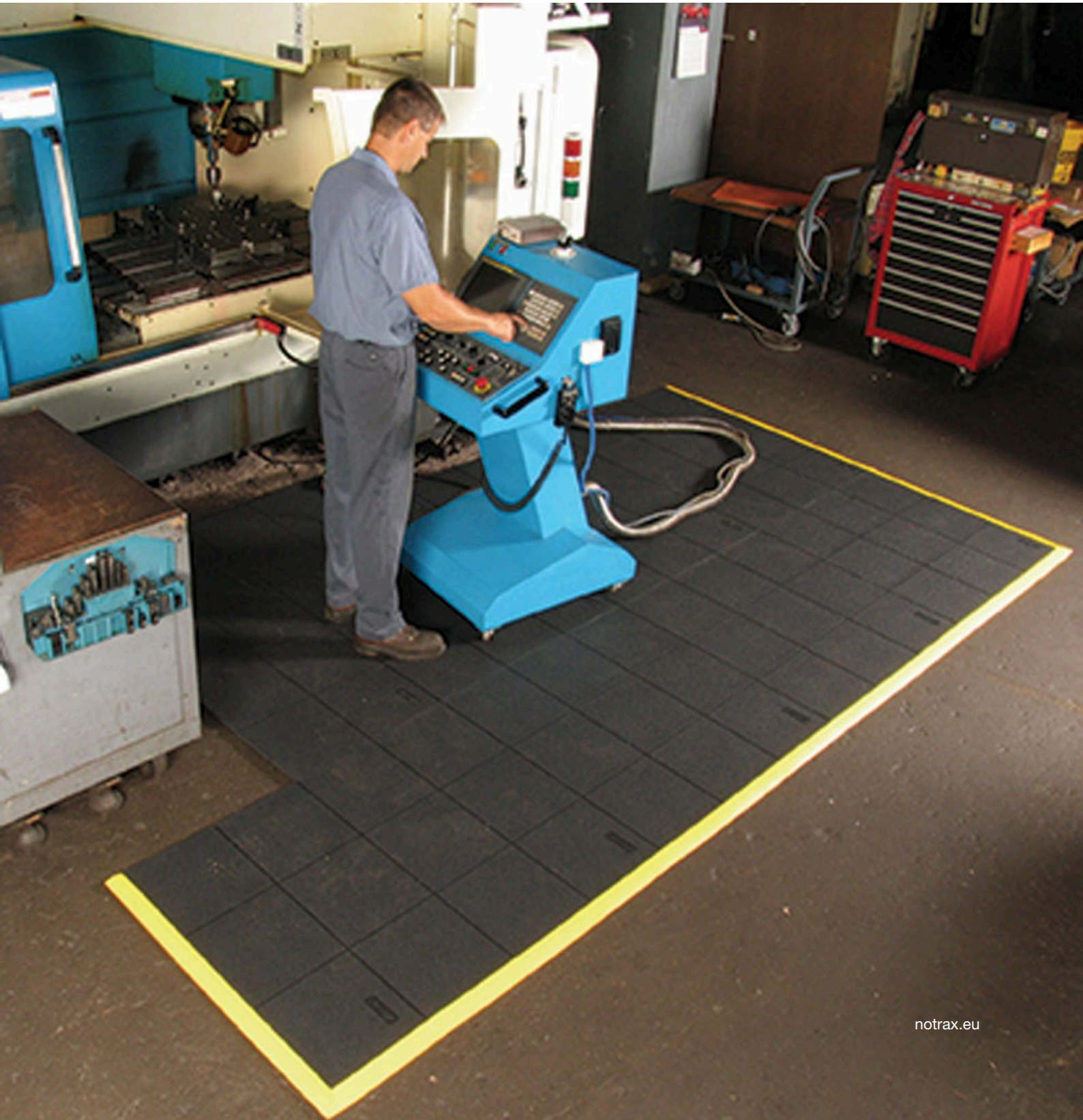




Justrite Safety Group

656S Cushion Ease Solid™ Nitrile

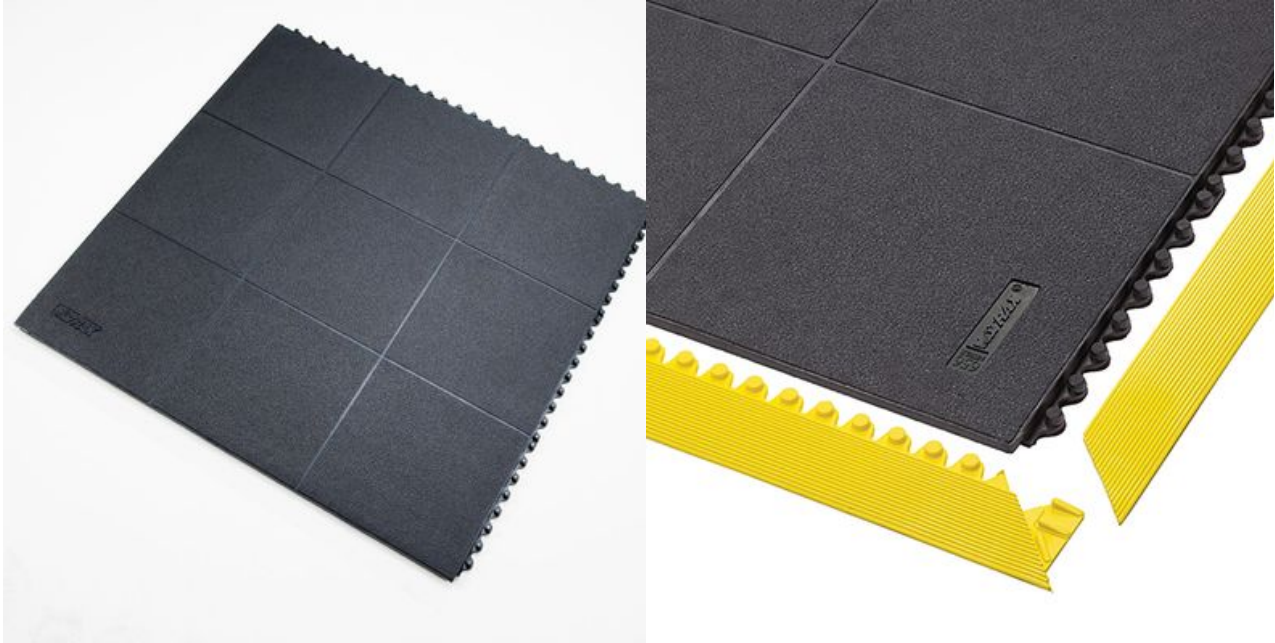
Heavy duty modular rubber tiles



656S Cushion Ease Solid™ Nitrile

Ergonomic, Anti-fatigue & Safety Matting - Dry/Wet Areas Modular Matting

Ergonomic benefit derived from a 19 mm thick worker platform with a closed anti-slip pebble structure surface for maximum anti-fatigue comfort in dry industrial environments.



- Heavy duty rubber tiles can be easily assembled for coverage of large areas or individual workstations, wall-to-wall or as islands
- Resistant to most industrial oils
- Compatible with patented MD Ramp System™ for smart safety bevelling solutions; allows outside and inside corners

- Wet/Dry and Oily Areas
- For placement in manufacturing plants, production lines, assembly lines, CNC machines, metal working for individual workstations and custom work platforms
- Heavy duty

Recommended use

WEAR RESISTANCE

SLIP RESISTANCE

ANTI-FATIGUE

GOOD BETTER BEST



Ergonomic, Anti-fatigue & Safety Matting - Dry/Wet Areas Modular Matting Cushion Ease Solid™ Nitrile

General

Brand	Notrax
Category	Dry/Wet Areas Modular Matting
Product Number	656S
Product Family	Industrial & Commercial Matting
Product Group	Ergonomic, Anti-fatigue & Safety Matting
Product Name	Cushion Ease Solid™ Nitrile
Recommended use	For placement in manufacturing plants, production lines, assembly lines, CNC machines, metal working for individual workstations and custom work platforms
Series	Cushion-Ease®
Shipping Location	Chicago, IL 60638, United States, Achterzeedijk 57, Unit 15, Barendrecht 2992SB, The Netherlands
Type	Wet/Dry and Oily Areas - Heavy Duty Modular Systems
Update trigger	20210310-1301
Usage Intensity	Heavy duty

Sustainability

REACH	Reach compliant (Registration, Evaluation, Authorization and Restriction of Chemicals).
Recycled	True
Rohs US	Rohs compliant (Restriction of Hazardous Substances).
Sustainability	Recyclable material
Warranty (years)	1

Tests

Abrasion Resistance 1000	1.50% weight loss (5000 cycles)
Compression Deflection 1.4	37.0 lb/in ² (at 25%)
Compression Deflection 2.8	98.9 lb/in ² (at 50%)
Fire rating US	Pass
Hardness	64 Shore A
Slip Rating	R9
Coefficient Friction Dry	0.88
Surface Flammability	Pass

Technical Specifications

Application	Industrial Environments
Edges	Attachable bevelled edges are available
Material	100% Nitrile rubber
Material Group	Nitrile rubber
Process	Compression Moulding
Temperature Range	- 40 ° C up to + 120 ° C

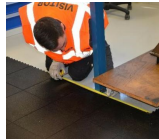
Cushion Ease Solid™ Nitrile Black

Art. nr.	Dimension (cm)	Weight (kg)	Thickness (mm)
656S0000BL	per m2	13.6	19
656S0033BL	91cm x 91cm	12	19

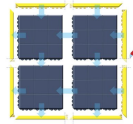
Accessories



552
MD-X Ramp System™ Nitrile
Ramp system for Cushion Ease and Safety Stance



INS
Installation Service Available on Request
Our Notrax® technical service team will lay your custom anti-fatigue mat installation in no time.



551
MD Ramp System™ Nitrile
Bevelled ramp system for Cushion Ease and Safety Stance series modular anti-fatigue mats.